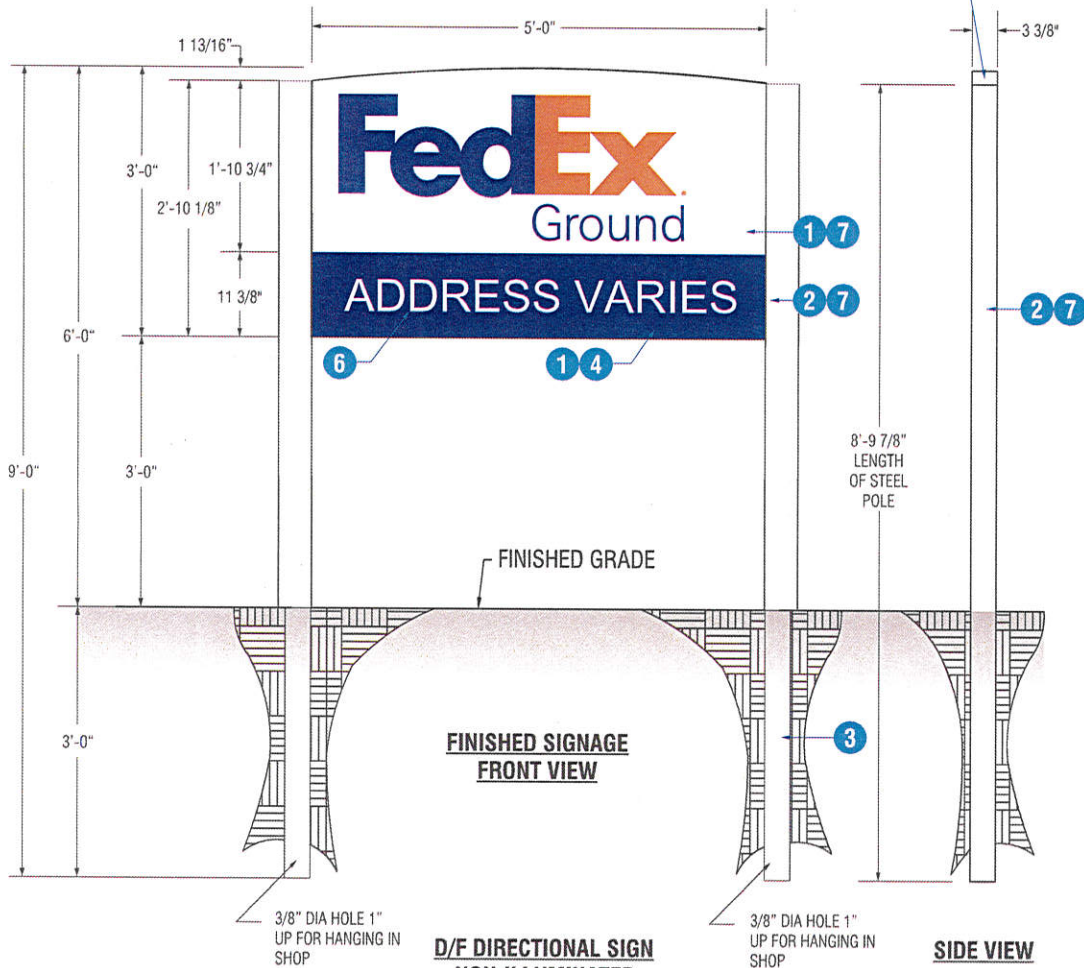


**TOP VIEW**

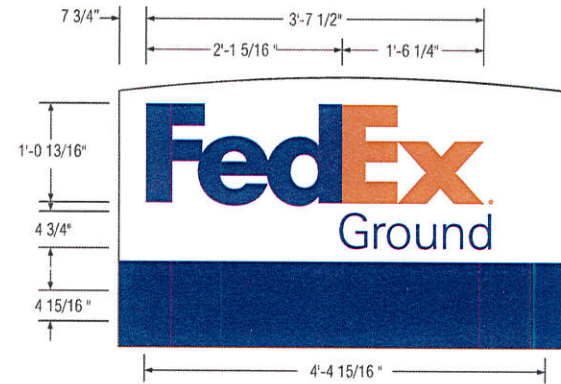


**FINISHED SIGNAGE  
FRONT VIEW**

**D/F DIRECTIONAL SIGN  
NON-ILLUMINATED  
Scale: 3/4" = 1'-0"**

**SIDE VIEW**

# D411G

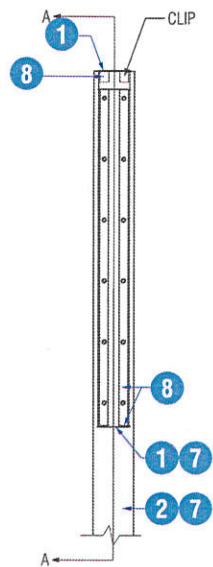
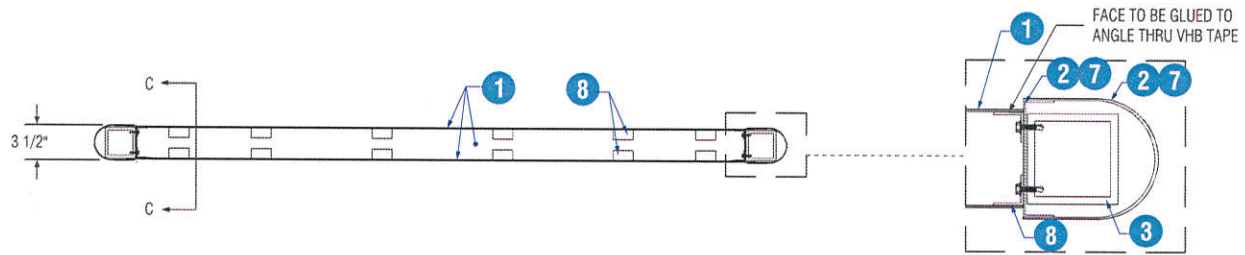


**VINYL LAYOUT**

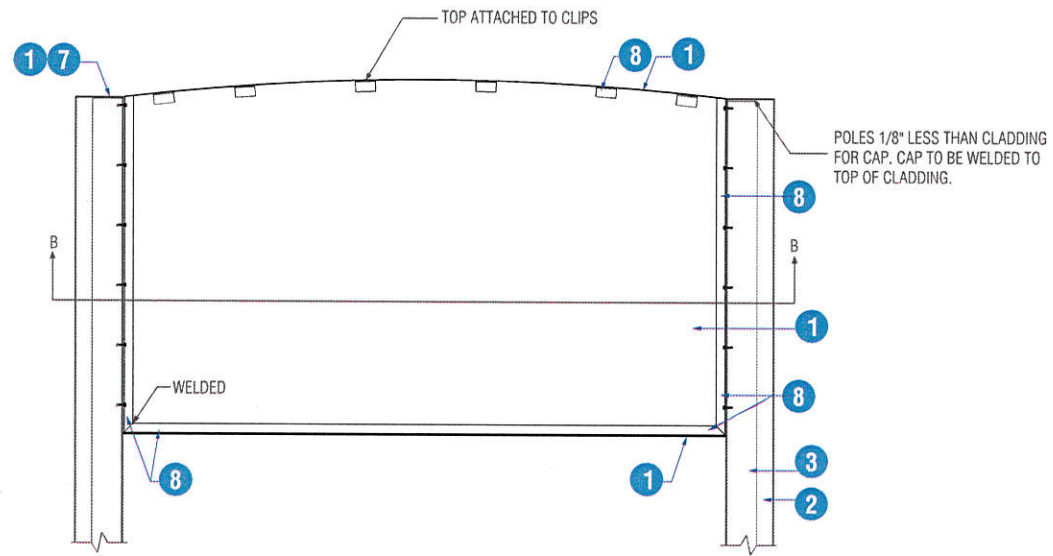
**PART DESCRIPTION :**

1. .080" ALUMINUM SHEET / FACES, TOP & BOTTOM OF CAB & CLIPS
2. .063" ALUMINUM SHEET
3. STEEL, 3" x 3" x 1/8" TUBING
4. PURPLE VINYL 3M 3635-70 / APPLIED 1ST SURFACE
5. ORANGE VINYL 3M 3635-30 / APPLIED 1ST SURFACE
6. STENCIL CUT
7. PAINT WHITE / SATIN FINISH
8. 1" x 1" x 1/8" ALUMINUM ANGLE
9. 3/4" TEK-SCREW/ HEX-HEAD
10. 1" VHB TAPE / TO ATTACH FACE AND CLIPS TO ANGLE
11. EYEBOLT, 3/8" x 1 1/4", SHOULDER
12. STEEL, SHEET, 1/8", A36 CAP PLATE

# D411G



**SECTION CC**



**SECTION AA**

SCALE: 1"=1'

**FedEx**<sup>®</sup>

Ground

**ADDRESS TBD**