



CONTRACTOR NAME: Xcel Energy
 CONTRACTOR JOB #: 109879209
 PREPARED BY: Sam Quaal, T.C.S. # 5296
 DATE PREPARED: 5/17/24 DATE REVISED: -



ORDERED BY: Jason McRoberts, Xcel Energy REVISED BY: -

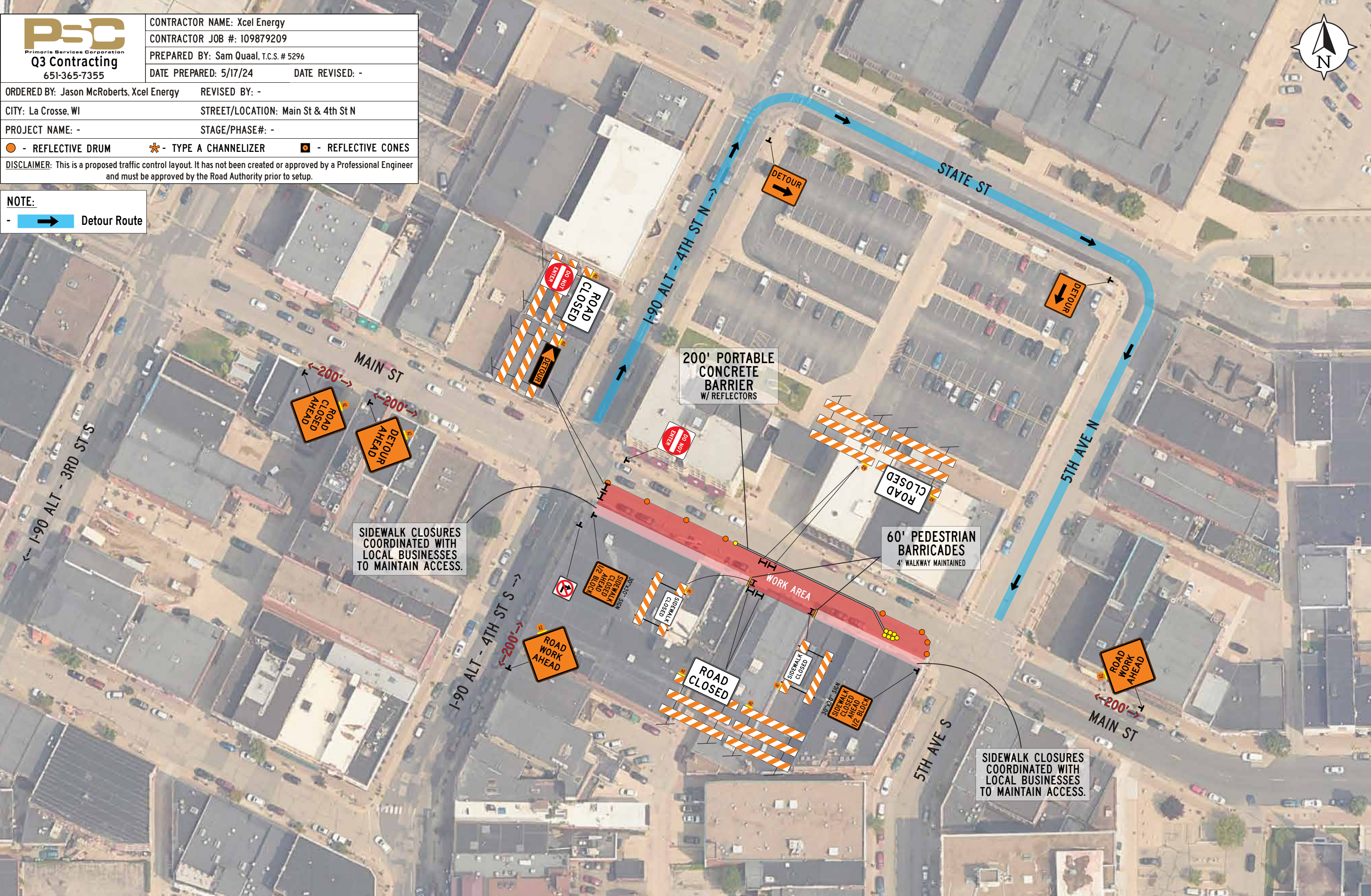
CITY: La Crosse, WI STREET/LOCATION: Main St & 4th St N

PROJECT NAME: - STAGE/PHASE#: -

● - REFLECTIVE DRUM * - TYPE A CHANNELIZER ◻ - REFLECTIVE CONES

DISCLAIMER: This is a proposed traffic control layout. It has not been created or approved by a Professional Engineer and must be approved by the Road Authority prior to setup.

NOTE:
 - Detour Route



SIDEWALK CLOSURES COORDINATED WITH LOCAL BUSINESSES TO MAINTAIN ACCESS.

SIDEWALK CLOSURES COORDINATED WITH LOCAL BUSINESSES TO MAINTAIN ACCESS.

200' PORTABLE CONCRETE BARRIER W/ REFLECTORS

60' PEDESTRIAN BARRICADES 4' WALKWAY MAINTAINED

WORK AREA

