



Mobilitie, LLC
120 S. Riverside Plaza
Suite 1800
Chicago, IL 60606 USA
Tel: 312.877.3231
www.mobilitie.com

June 1, 2018

Mayor Tim Kabat
City of La Crosse
400 La Crosse Street
La Crosse, WI 54601

RE: WISCONSIN TECHNOLOGY NETWORKING, LLC'S (WITN) RIGHT-OF WAY AND POLE ATTACHMENT AGREEMENTS

Dear Mayor Kabat:

Thank you for the City's consideration of our wireless agreements. WITN is most appreciative of the efforts city staff have taken to assist in the facilitation of our deployment. Attached you will find some additional information related to WITN's deployment of wireless infrastructure in the City of La Crosse. We thought some background information would be helpful to shed light on our request.

SMALL CELL FACILITIES

WITN's Small Cell facilities involve the installation of small, low-powered wireless equipment, consisting of a transmit-receive antenna that communicates with wireless devices, a wireless backhaul antenna that connects the facility to the carrier's core network, and a compact radio, all of which are mounted on existing utility or light poles. These Small Cell facilities add coverage and capacity to the existing wireless networks, and are designed to blend with existing infrastructure.

DEPLOYMENT MAP

Attached is the latest map of our proposed deployment. We presently have 16 Small Cell sites within the City. Fifteen (15) of those are to be collocated on Xcel Energy Poles and one (1) is to be collocated on a City owned light pole. We have also included a list of sites with addresses and pole heights.

AS-BUILT PHOTOS

Attached are several photos of installations we have built throughout the region. We can describe in more detail the specifics of the photos at the hearing.

REQUEST FOR APPROVAL

At this time, WITN respectfully requests the City to approve our Right-of Way and Pole Attachment Agreements so that we may implement our project and begin setting the foundation for 5G within the City of La Crosse. We have been working with the City's attorneys crafting the agreements over the past year and are confident with the progress we have made.

WITN looks forward to working with La Crosse and values its partnership in order to provide your constituents with high-speed connectivity. Please do not hesitate to contact me at (608) 852-6170 or jwendt@mobilitie.com.

Thank you for your attention to this matter.

Respectfully submitted,

Jay Wendt

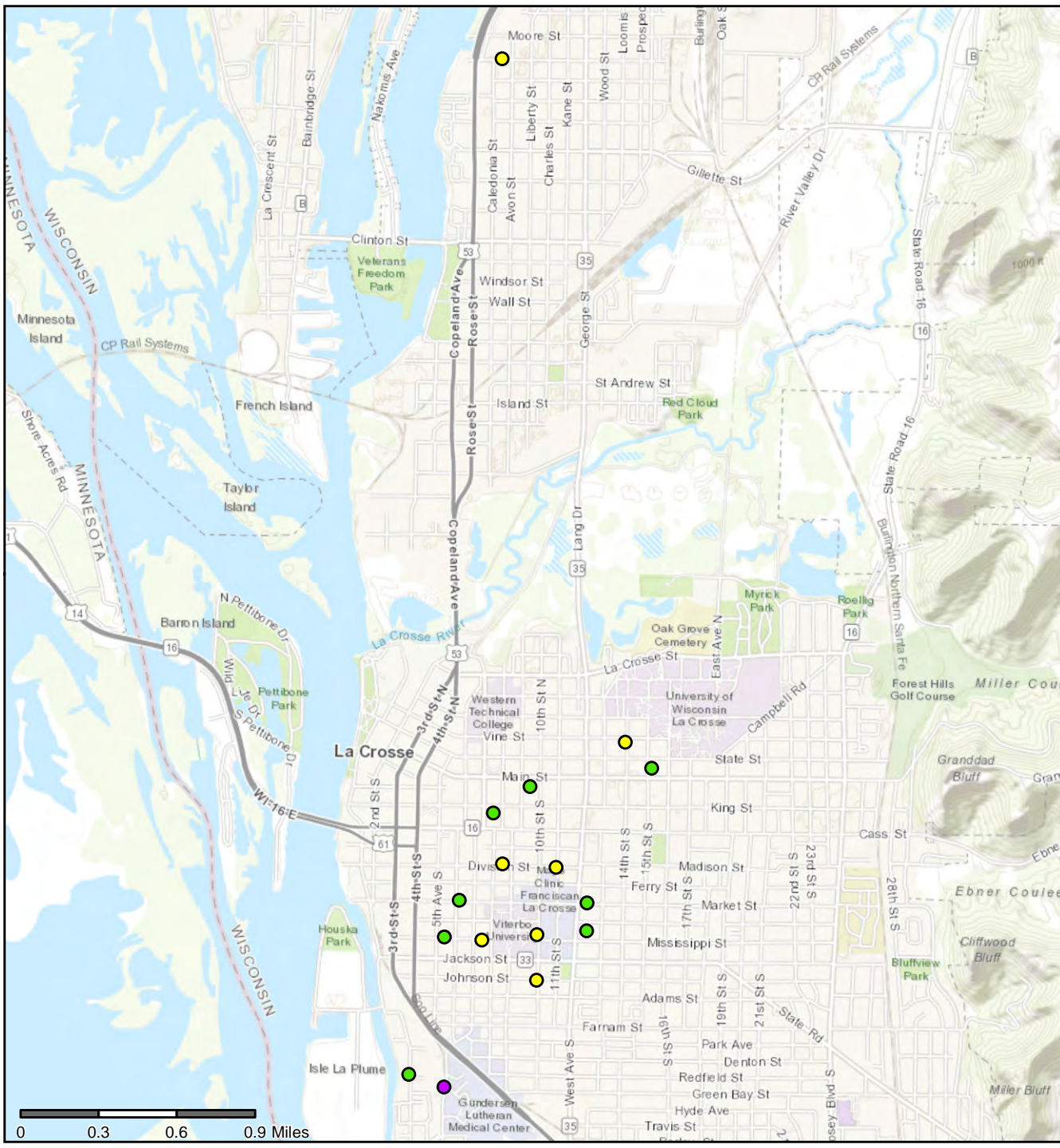
Permitting Manager

La Crosse, WI

Active Mobilitie Sites

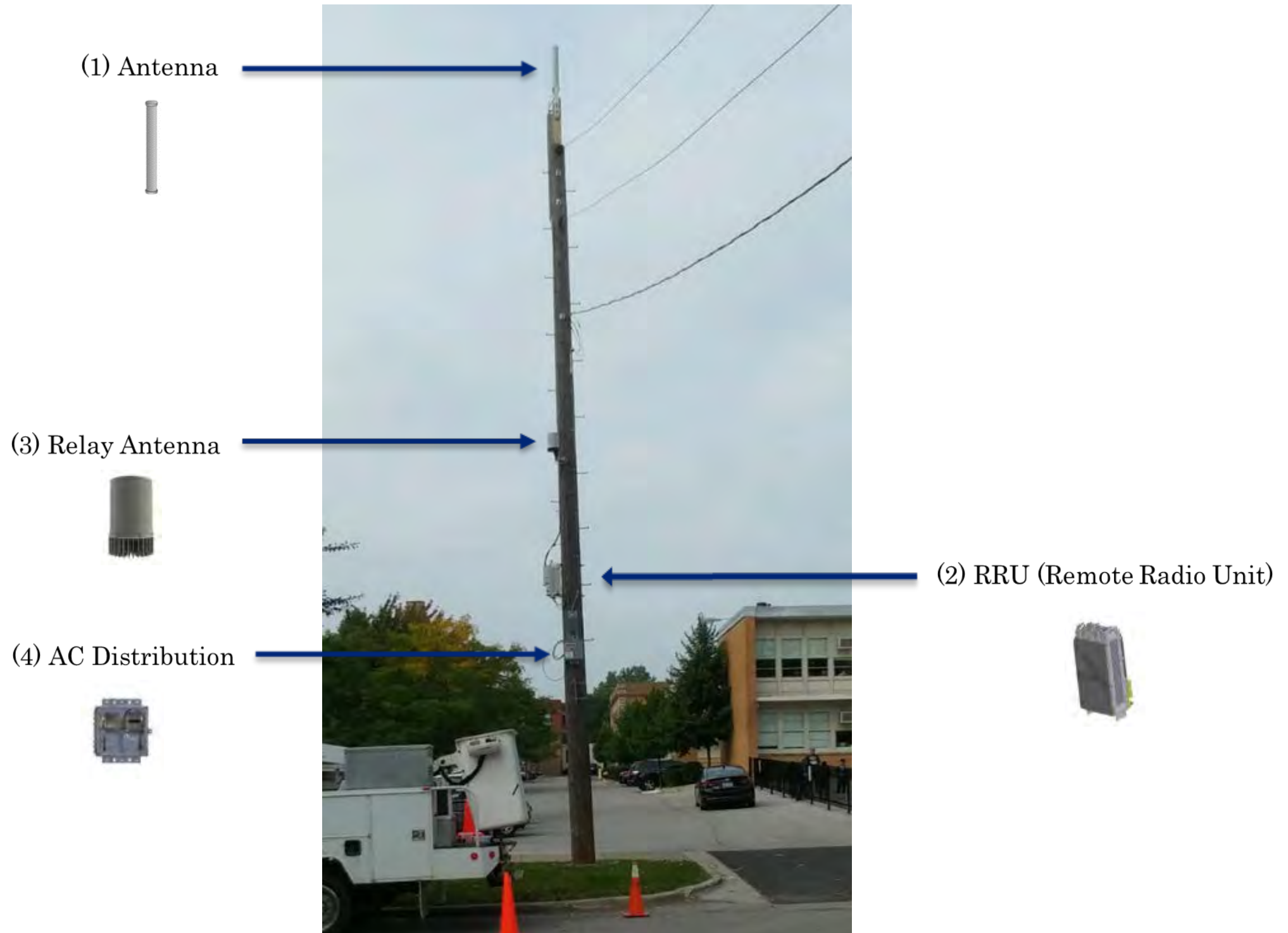
Installation Type

- City of La Crosse
- Xcel Energy/Attachment
- Xcel Energy/Replacement



C:Candidate Code	Latitude	Longitude	Address	Pole Height
ML90XS349C	43.80267900	-91.24959800	511 Mississippi St	44' 6"
ML90XS350D	43.80254700	-91.24672700	712 Mississippi St	43'
ML90XS352B	43.80288600	-91.24249100	800-816 10th St	43'
ML90XS353F	43.80313600	-91.23869400	1228 Winnebago St	35' 6" w/extension
ML90XS354H	43.80036600	-91.24248100	1102 10th St	43'
ML90XS356C	43.80679100	-91.24521800	831 Division St	34'
ML90XS358B	43.80664000	-91.24111700	1022 Division St	43'
ML90XS360C	43.80470000	-91.23870300	1209 Market St	57' 10"
ML90XS362G	43.81109400	-91.24320000	111 9th St S	33' 10"
ML90XS365E	43.81223200	-91.23390200	100-148 15th St N	43' w/extension
ML90XS366C	43.81365000	-91.23594800	227 14th St N	34'
ML90XSZ82F	43.85148000	-91.24619800	715 Livingston St	38' 6"
ML90XSZ91E	43.80961200	-91.24598100	210 8th St S	34'
ML90XSZ92D	43.80472700	-91.24850000	615 Market St	56'
ML90XSZ93C	43.79502500	-91.25217200	1630-1698 Miller St	38'
ML90XSZ94C	43.79435100	-91.24943600	1800-1898 7th St S	30'

Small cell facility installation



Small cell facility installation



Small cell facility installation



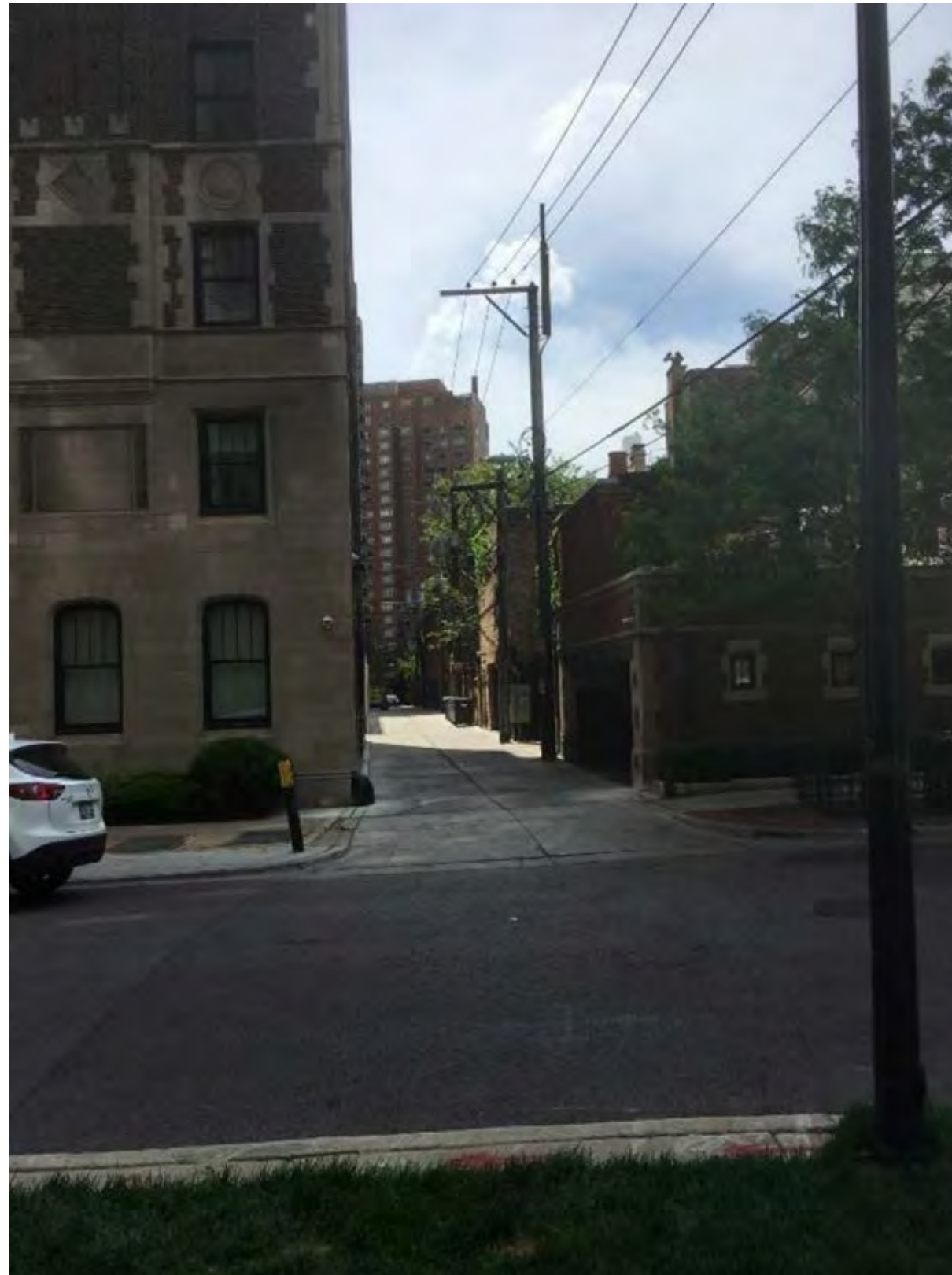
Small cell facility installation



Small cell facility installation



Small cell facility installation



Small cell facility installation

