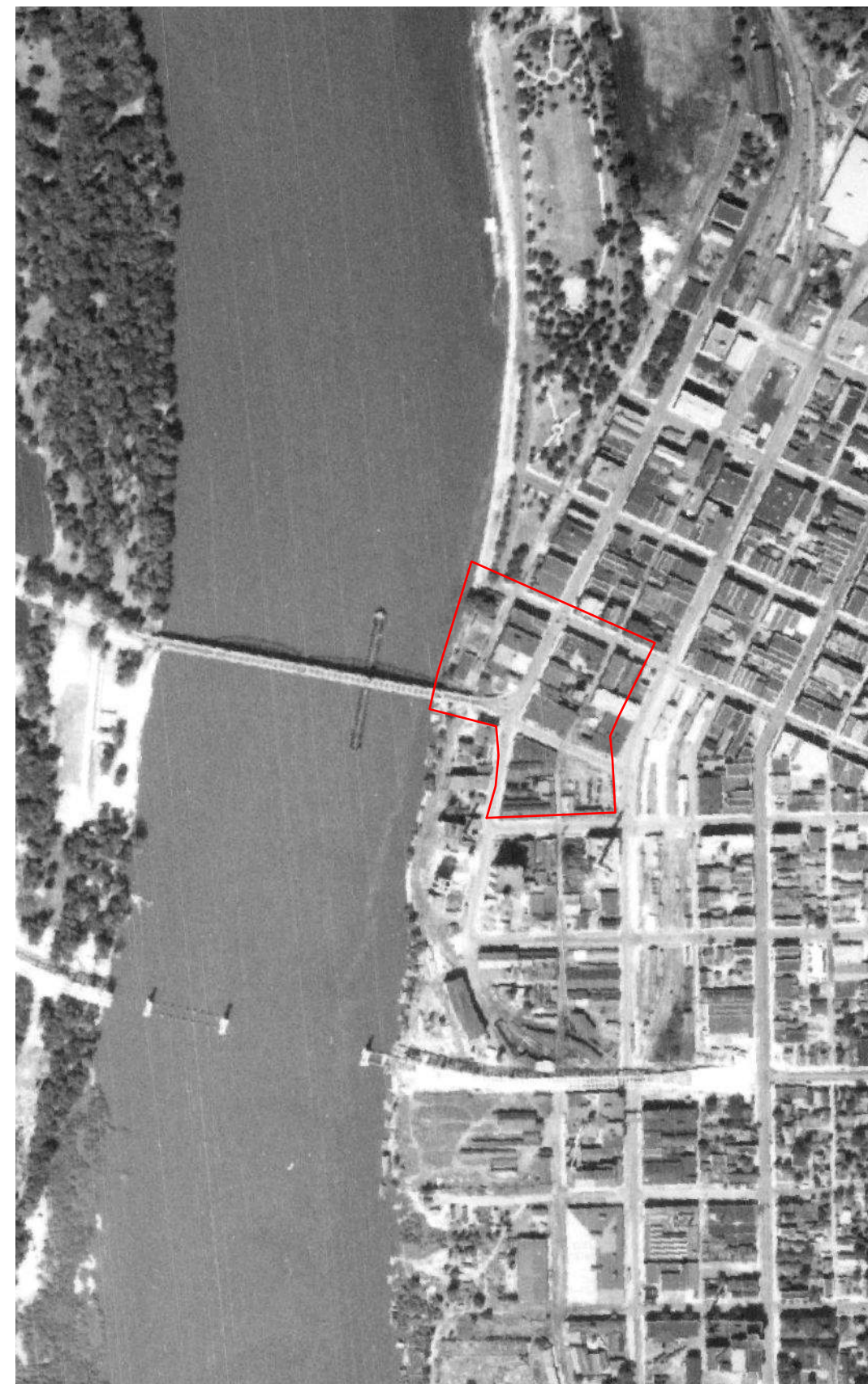


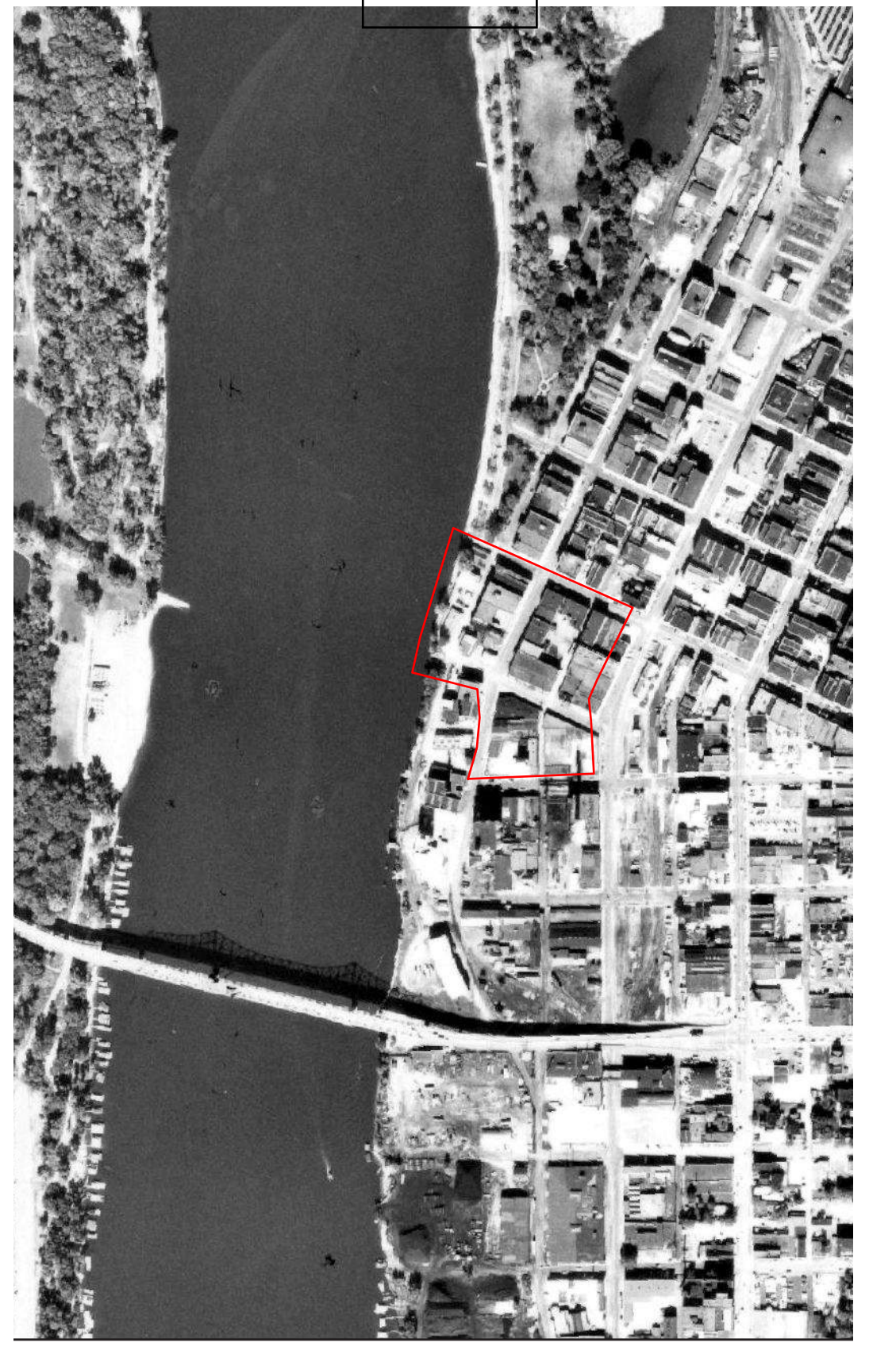
1929



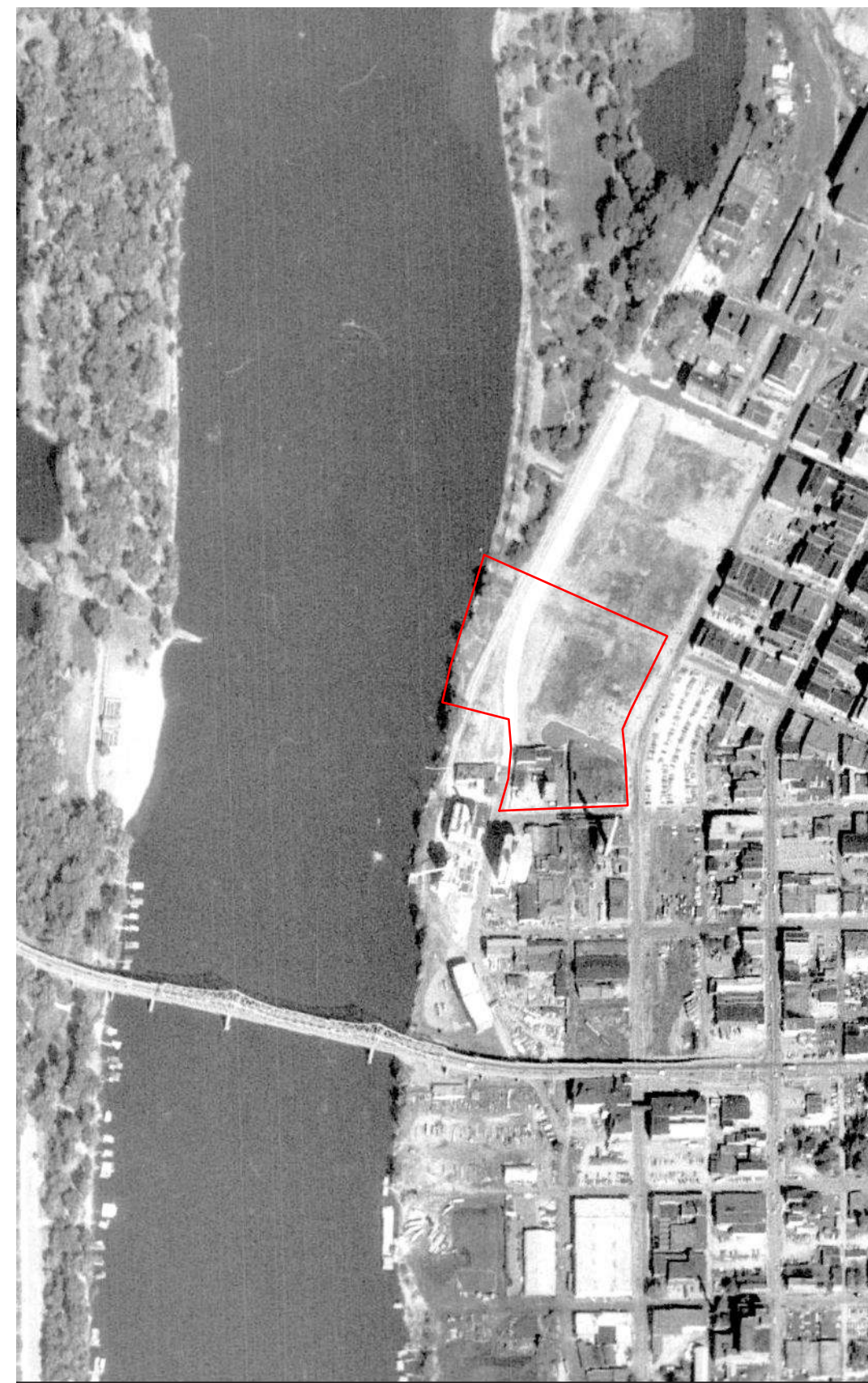
1938



1954



1967



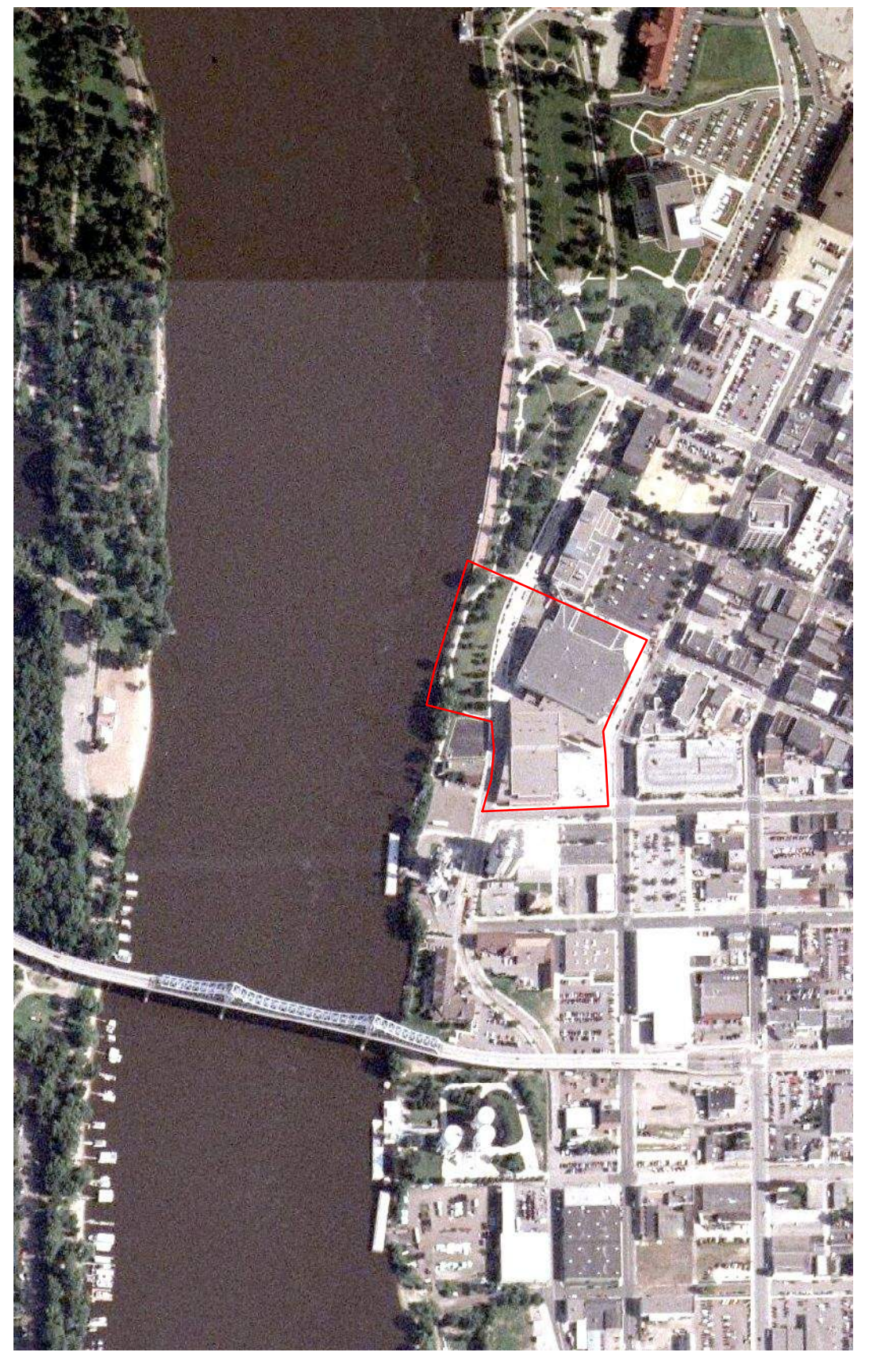
1974



1982



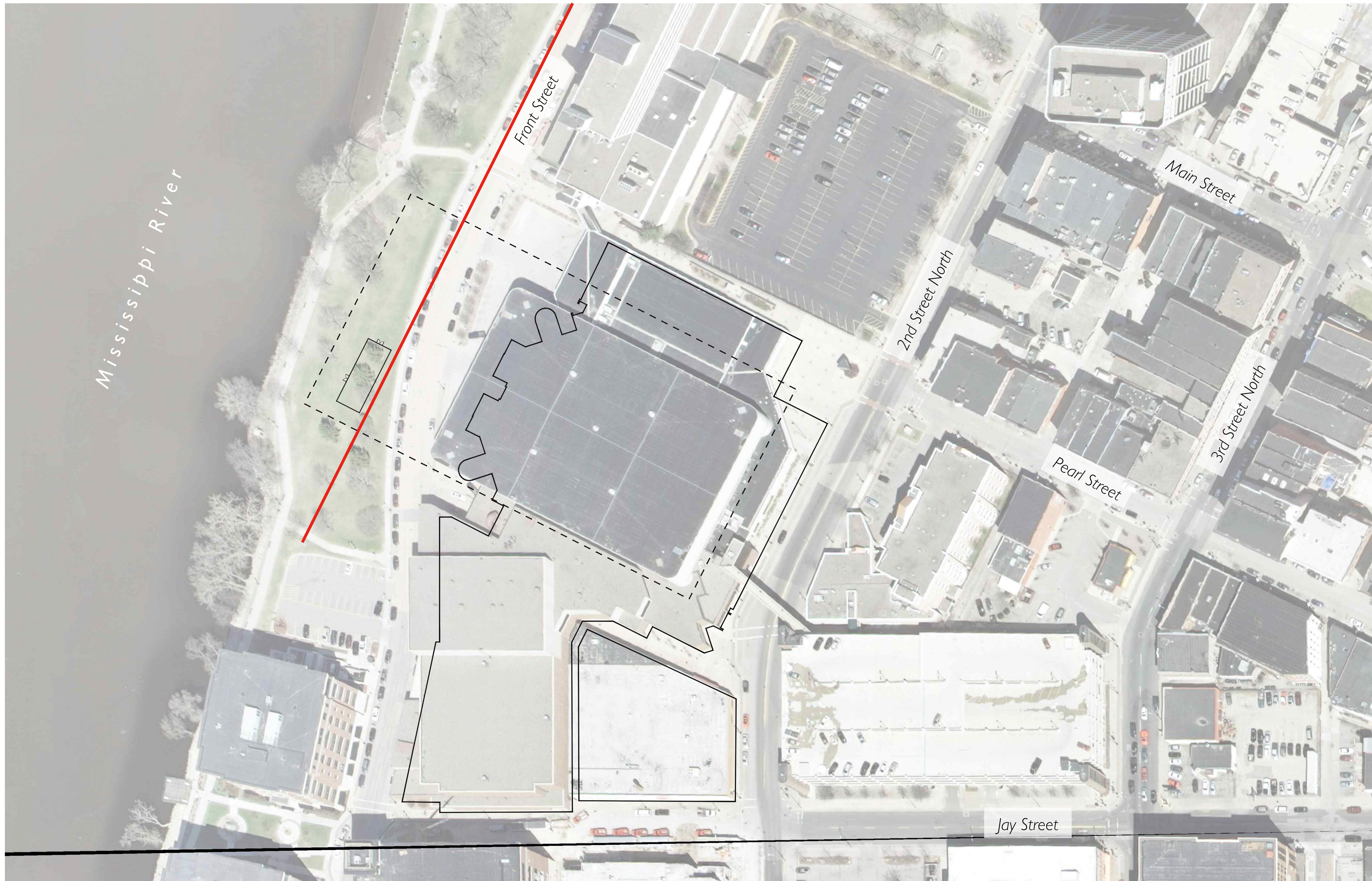
1992



2002

ORIGINAL PARK MASTER PLAN

PROPOSED LEVEE PARK PLAN, SOURCE: THE MAKING OF A PARKING SYSTEM IN LA CROSSE BY JOHN NOLEN, LANDSCAPE ARCHITECT, 1911



ENLARGEMENT MAP

