

BRIGHTSPEED LA CROSSE

LCRSWIXB

2604 15TH ST S, LA CROSSE, WI 54601, USA

CONDUIT LAYOUT

Sheet List Table

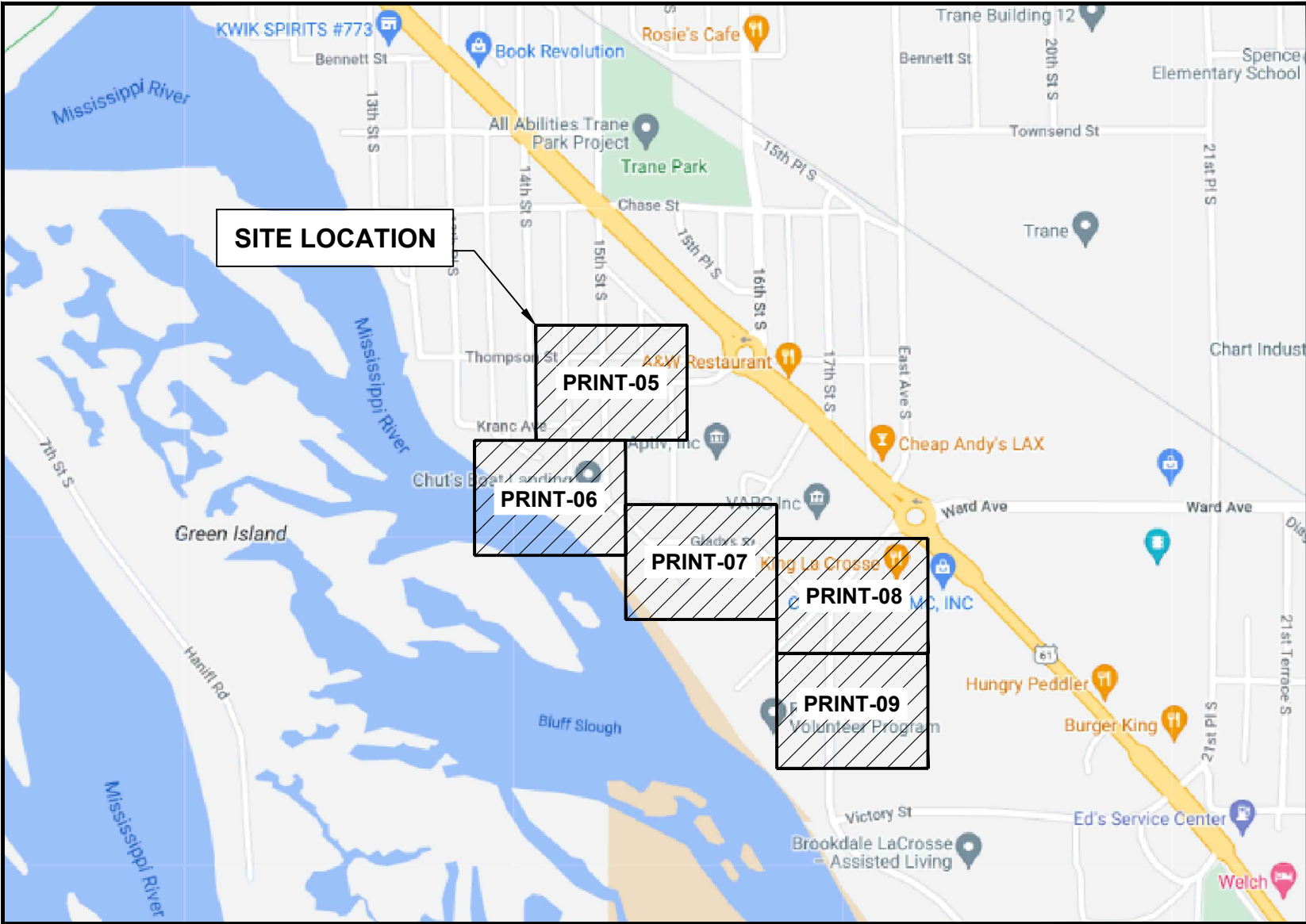
Sheet Number	Sheet Title
01	COVER SHEET
02	GENERAL NOTES
03	LEGENDS
04	TYPICALS
05-09	FIBER LAYOUTS

Material List Table

ITEM	QUANTITY
FEEDER FIBER	00
JUMPER	00
17"X30"X18" HH	04
12"X24"X18" HH	00
24"X36"X24" HH	02
2" CONDUIT	2,825'
NEW STRAND	00
ANCHOR	00

BLM INFO

SECTION	S8
MUNICIPALITY	LA CROSSE
TOWNSHIP	T15N
COUNTY	LA CROSSE
RANGE	R7W

[illegible]

GENERAL ABBREVIATIONS

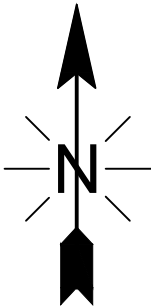
R/W	RIGHT OF WAY
S/W	SIDEWALK
C/L	CENTER LINE
CSW	CONCRETE SIDEWALK
DWY	DRIVEWAY
FOC	FACE OF CURB
BOC	BACK OF CURB
EOC	EDGE OF CURB
EOP	EDGE OF PAVEMENT
ETW	ETW LINE
HH	HANDHOLE
MH	MANHOLE
N.T.S.	NOT TO SCALE
CONC	CONCRETE
PED	PEDESTAL (UTILITY)
PVC	POLYVINYL CHLORIDE
P/L	PROPERTY LINE
RR	RAILROAD
SL	STREET LIGHT
W-BLDG	WALL TO BUILDING
W-P	WALL TO POLE
W-W	WALL TO WALL
U/E	UTILITY EASEMENT
SD	STORM DRAIN
TS	TRAFFIC SIGNAL

PERMITTING AGENCY

CITY OF LA CROSSE

PROPOSED LINEAR PATH FOOTAGE

UG PATH - 2,825 FT



**Know what's below.
Call before you dig.**



A **CONGRUEX**® COMPANY

9095 Rio San Diego Dr., Suite 450,
San Diego, CA 92108



LCRSWIXB

COVER SHEET

PLAN SHEET DISCLAIMER:

1. EVERY REASONABLE EFFORT HAS BEEN MADE TO ASSURE THE ACCURACY OF THESE PLANS AND ASSOCIATED DATA.
2. IN AN EFFORT TO INCREASE THE CLARITY AND LEGIBILITY OF THE PLANS, EXISTING UNDERGROUND UTILITIES WILL NOT BE SHOWN UNLESS THERE IS PROPOSED WORK THAT WILL REQUIRE EXCAVATION OR ANY OTHER EARTH DISTURBING ACTIVITY. IF PROPOSED WORK WILL REQUIRE THIS TYPE OF ACTIVITY. EXISTING UNDERGROUND UTILITIES WILL BE PROPERLY INVESTIGATED AND REPRESENTED ON THE PLAN SHEET OF THE RESPECTIVE WORK LOCATION

UTILITIES

1. THE IDENTITY AND LOCATION OF EXISTING UNDERGROUND UTILITIES LOCATED IN AND AROUND THE CONSTRUCTION AREA HAVE BEEN SHOWN AND LABELED ON THE PLANS BY USING INFORMATION PROVIDED BY THE RESPECTIVE UTILITY OWNERS.
2. SUPPORT AND PROTECTION OF ALL UTILITIES AND APPURTENANCES SHALL BE THE RESPONSIBILITY OF THE CONTRACTOR. COSTS FOR THE REPAIR AND RESTORATION OF EXISTING UTILITIES DAMAGED BY THE CONTRACTOR SHALL BE THE RESPONSIBILITY OF THE CONTRACTOR
3. CALL 811 BEFORE YOU DIG. AT LEAST 48 HOURS PRIOR TO EXCAVATION.

WORK LIMITS

1. THE WORK LIMITS SHOWN ON THESE PLANS ARE FOR PHYSICAL CONSTRUCTION ONLY. THE INSTALLATION AND OPERATION OF ALL TEMPORARY TRAFFIC CONTROL AND TEMPORARY TRAFFIC CONTROL DEVICES REQUIRED BY THESE PLANS SHALL BE PROVIDED BY THE CONTRACTOR WHETHER INSIDE OR OUTSIDE OF THESE WORK LIMITS.

MAINTAIN DRAINAGE

1. THE CONTRACTOR AT HIS OWN EXPENSE, SHALL MAINTAIN THE FLOW IN ALL SEWERS, DRAINS, FIELD TILES, AND WATERCOURSES ENCOUNTERED IN AND AROUND THE PROJECT SITE. IF SUCH WATERCOURSES OR DRAINS ARE DISTURBED OR DESTROYED DURING THE EXECUTION OF THE PROJECT, THEY SHALL BE RESTORED BY THE CONTRACTOR AT HIS OWN EXPENSE TO A CONDITION SATISFACTORY TO THE ENGINEER.

SECURING EXCAVATIONS & TRENCHES FOR NON-WORKING HOURS

1. EXCAVATIONS AND TRENCHES OVER 24-INCHES DEEP SHALL BE SECURELY PLATED OR BACKFILLED DURING NON-WORKING HOURS.

EXCAVATION OF ROADWAY AND RIGHT-OF-WAY AREAS

1. ANY CONTRACTOR PERFORMING EXCAVATION, INCLUDING BUT NOT LIMITED TO DISTURBING THE EARTH WTH POWERED OR NON-POWERED EQUIPMENT, DRILLING AND/OR BORING, SHALL CAUSE NOTICE TO BE GIVEN BY CALLING 811 AT LEAST 48 HOURS BUT NOT MORE THAN 10 WORKING DAYS BEFORE EXCAVATING.
2. THE EXCAVATOR SHALL PROTECT AND PRESERVE THE MARKINGS UNTIL THOSE MARKINGS ARE NO LONGER NEEDED. IF AN EXCAVATION WILL COVER A LARGE AREA AND/OR PROGRESS FROM ONE AREA TO THE NEXT OVER A PERIOD OF TIME. THE EXCAVATOR SHALL COORDINATE THE MARKING OF APPROXIMATE LOCATIONS OF CITY OWNED FACILITIES WITH THE ACTUAL EXCAVATION.
3. THE CONTRACTOR IS RESPONSIBLE FOR LOCATING ALL CUSTOMER OWNED SERVICE LINES/LATERALS. THE CONTRACTOR SHALL FIELD VERIFY THE HORIZONTAL AND VERTICAL LOCATION OF ANY CITY OR CUSTOMER OWNED MAIN OR SERVICE LINE/LATERALS THAT MAY BE AFFECTED BY THE PROPOSED CONSTRUCTION ACTIVITIES. FIELD VERIFICATION SHALL TAKE PLACE PRIOR TO ANY ACTIVITY THAT MAY JEOPARDIZE THE INTEGRITY OF THE FACILITY AND AT A LOCATION NEAREST THE POINT OF POSSIBLE CONFLICT.
4. ANY DAMAGES TO CITY OR CUSTOMER OWNED FACILITIES SHOULD FIRST BE REPORTED TO THE UTILITY OWNER THEN IMMEDIATELY NOTIFY THE PROJECT ENGINEER.

AERIAL CONSTRUCTION:

1. CONTRACTOR TO VERIFY ALL BONDING AND GROUNDING COMPLES WITH NESC GUIDELINES.
2. CONSTRUCTION TO VERIFY ALL REQUIRED MAKE READY WORK IS COMPLETE BEFORE PLACING ON UTILITY POLES.

SAFETY NOTE:

1. CHECK IN WITH CONSTRUCTION SUPERVISOR WHEN ARRIVING ON-SITE.
2. HEAVY CONSTRUCTION EQUIPMENT IN USE. BEWARE OF SURROUNDINGS.
3. FOLLOW CONGRUEX SAFETY POLICIES AND GUIDELINES AT ALL TIMES WHILE WORKING.
4. CONSTRUCTION ZONE/ HARD HAT, SAFETY GLASSES, REFLECTIVE VEST/SHIRT, SAFETY TOE BOOTS REQUIRED – WORK SAFELY

CHC

A CONGRUEX[®] COMPANY

brightspeed

CONFIDENTIAL AND PROPRIETARY

LCRSWIXB

LEGENDS SHEET

EXISTING EQUIPMENTS LEGENDS

R/W

R/W

C/L

CENTER LINE

EOP

EOP

BOC

BOC

PROPERTY LINE

FENCE

T

TELCO

E

ELECTRIC

G

GAS

TS

TRAFFIC SIGNAL

W

WATER

S

SEWER

SD

STORM DRAIN

U/E

UTILITY EASEMENT

RAIL TRACKS

SIDEWALK

CABINET

EXISTING PED

EXISTING FLOWERPOT

EXISTING HANDHOLE

TELEPHONE CABINET

TELEPHONE MANHOLE

POLE

CABLE MARKER

STREET SIGN

VERTICAL GROUND

ELECTRIC PEDESTAL/CABINET

ELECTRIC TRANSFORMER

ELECTRIC METER

ELECTRIC VAULT/HANDHOLE

ELECTRIC MANHOLE

EXISTING VAULT

STREETLIGHT

POWER PED

CATV PED

CATV VAULT/HANDHOLE

TREE

TRANSFORMER

GAS METER

GAS VALVE

SEWER MANHOLE

UNKNOWN MANHOLE

WATER METER

WATER VALVE

FIRE HYDRANT

WATER MANHOLE

STORM DRAIN CATCH BASIN

STORM DRAIN MANHOLE

CULVERT

C/L MONUMENT

ANCHOR & DOWN GUY

PROPOSED EQUIPMENTS LEGENDS

BORE

BORE

BORE

TRENCH

A

AERIAL FIBER

AERIAL STRAND

12"X24"X18" HANDHOLE

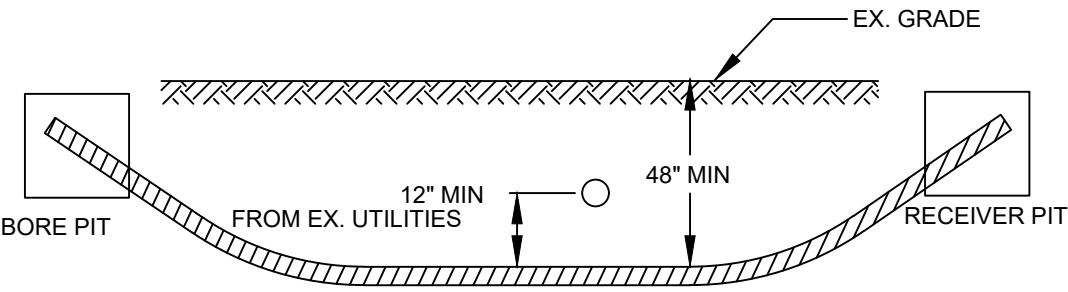
17"X30"X18" HANDHOLE

24"X36"X24" HANDHOLE

36"X48"X30" HANDHOLE

ANCHOR & DOWN GUY

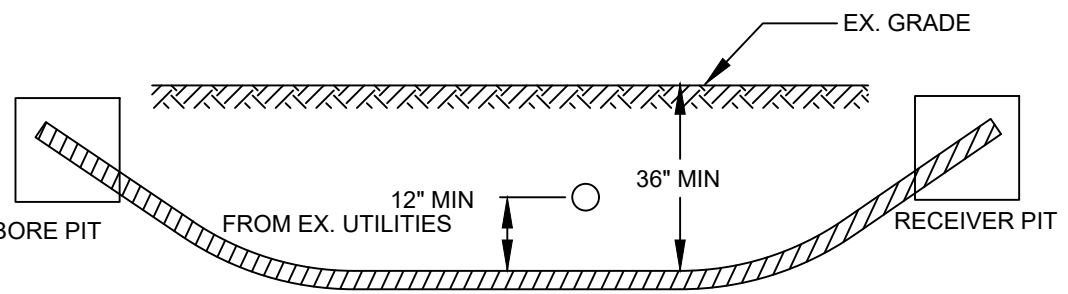
MINIMUM STANDARDS FOR DIRECTIONAL BORING
STREET CROSSINGS



- PLACE END MARKER WITH UTILITY OWNER'S NAME DESCRIBING CONDUIT
- BORE PIT TO BE BACKFILLED AND COMPACTED IN 12" LIFTS WITH MATERIAL REMOVED
- FLOW OF DITCH MUST BE MAINTAINED AT ALL TIMES
- PROTECT ROOTS AT ALL TREE LOCATIONS, SHIFT BORE TRENCH IF NECESSARY

TYPICAL BORE DETAILS 1

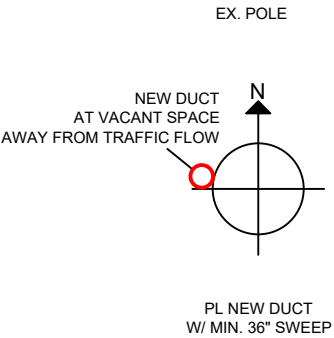
MINIMUM STANDARDS FOR DIRECTIONAL BORING
UNDER SIDEWALKS & WITHIN ROW (EXCLUDING STREET CROSSINGS)



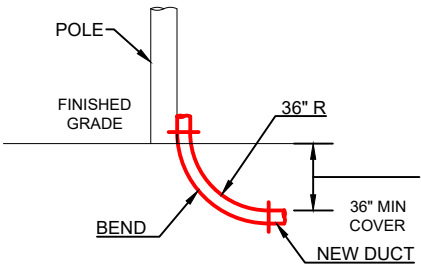
- PLACE END MARKER WITH UTILITY OWNER'S NAME DESCRIBING CONDUIT
- BORE PIT TO BE BACKFILLED AND COMPACTED IN 12" LIFTS WITH MATERIAL REMOVED
- FLOW OF DITCH MUST BE MAINTAINED AT ALL TIMES
- PROTECT ROOTS AT ALL TREE LOCATIONS, SHIFT BORE TRENCH IF NECESSARY

TYPICAL BORE DETAILS 2

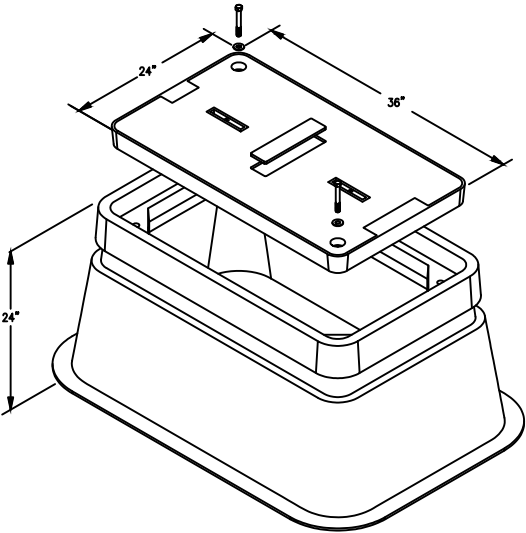
PLAN VIEW



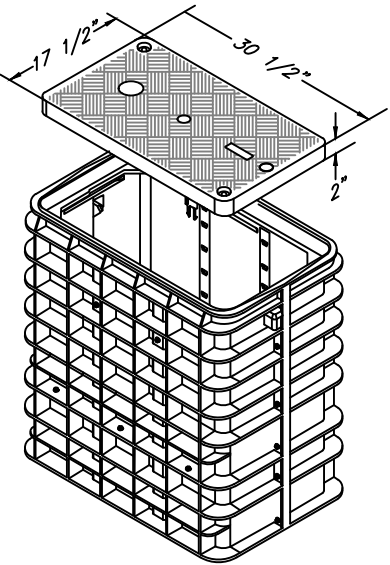
ELEVATION



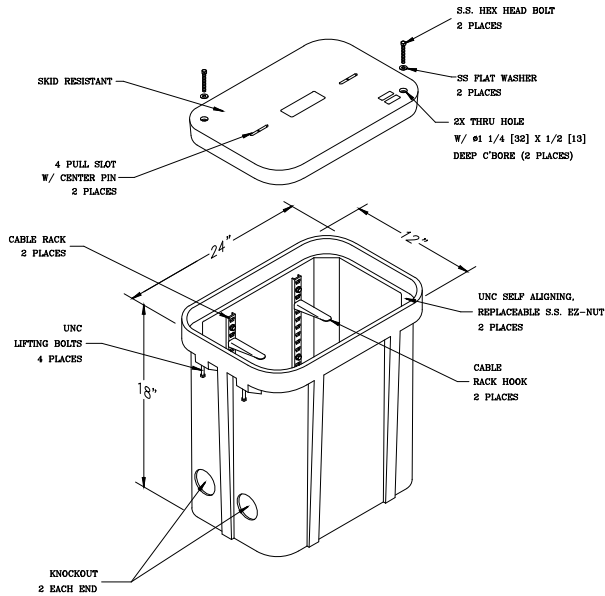
RISER DETAILS



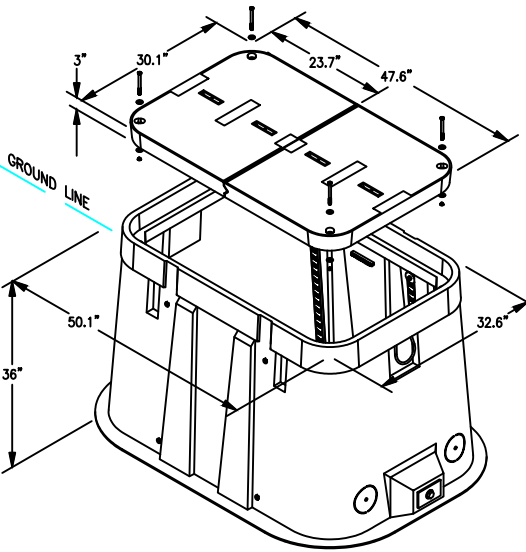
24"x36"x24"
N.T.S.



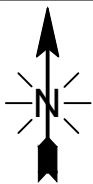
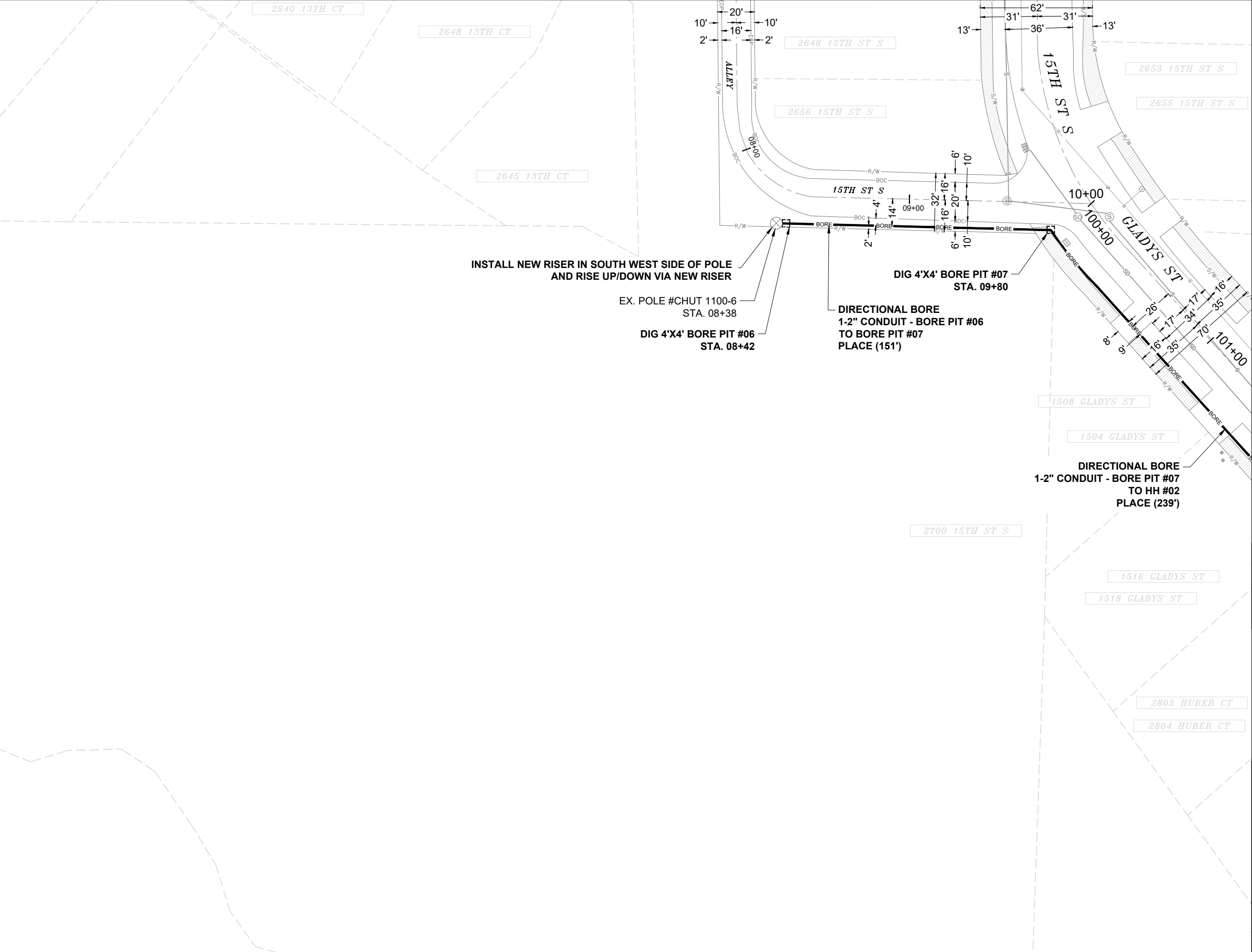
17"x30"x18"
N.T.S.



12"x24"x18"
N.T.S.



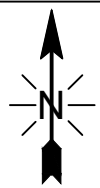
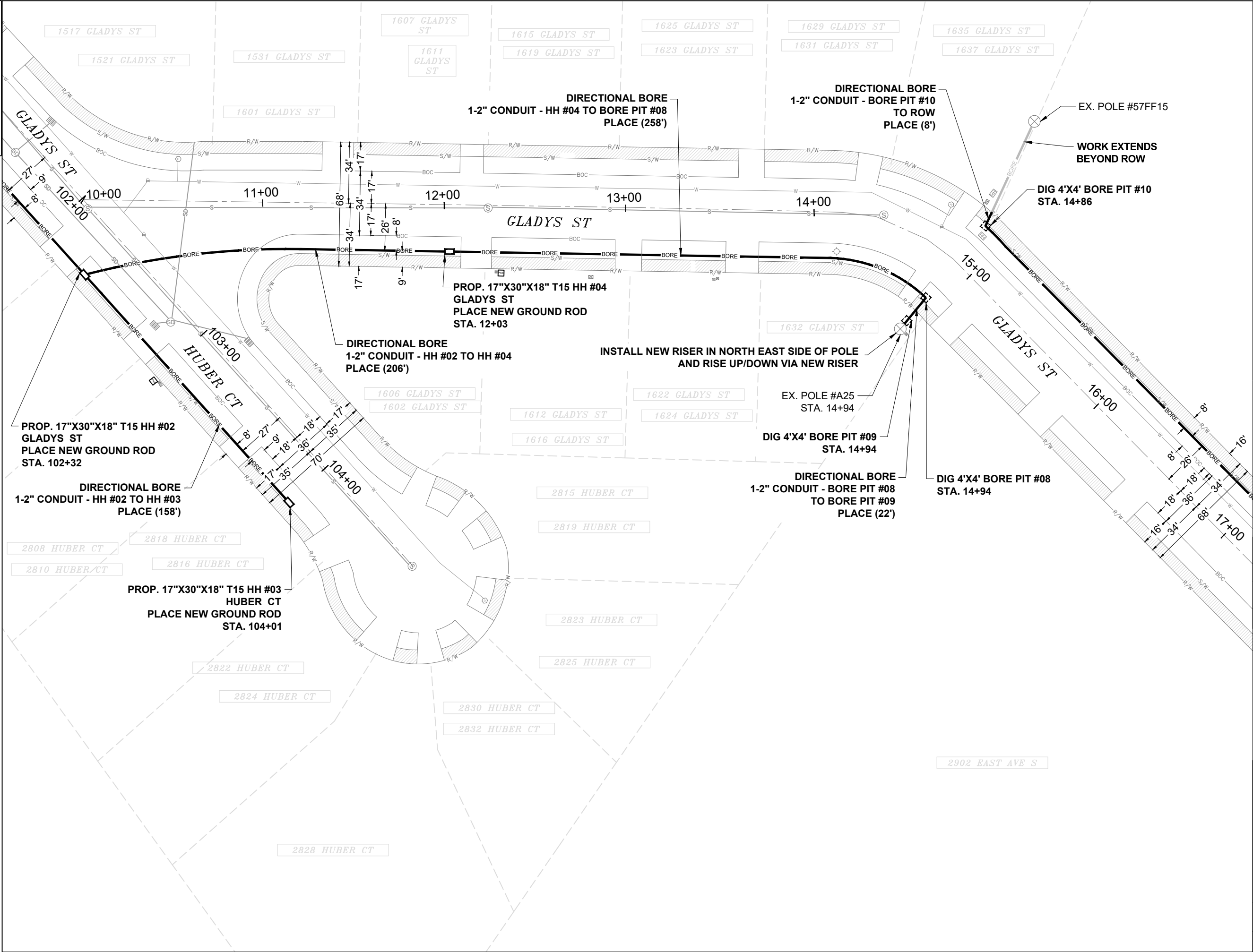
30"x48"x36"
N.T.S.



MATCH TO SHEET 07

EXCAVATION DATA	
PROPOSED UTILITY	DIRT
(2) 4'X4' BORE PIT	32 SQFT
CALL 811 BEFORE YOU DIG. WISCONSIN TOLL FREE 800-242-8511	
	
	
CONFIDENTIAL AND PROPRIETARY LCRSWIXB	
06 OF 09	
SCALE: 1" = 50'	

MATCH TO SHEET 06



MATCH TO SHEET 08

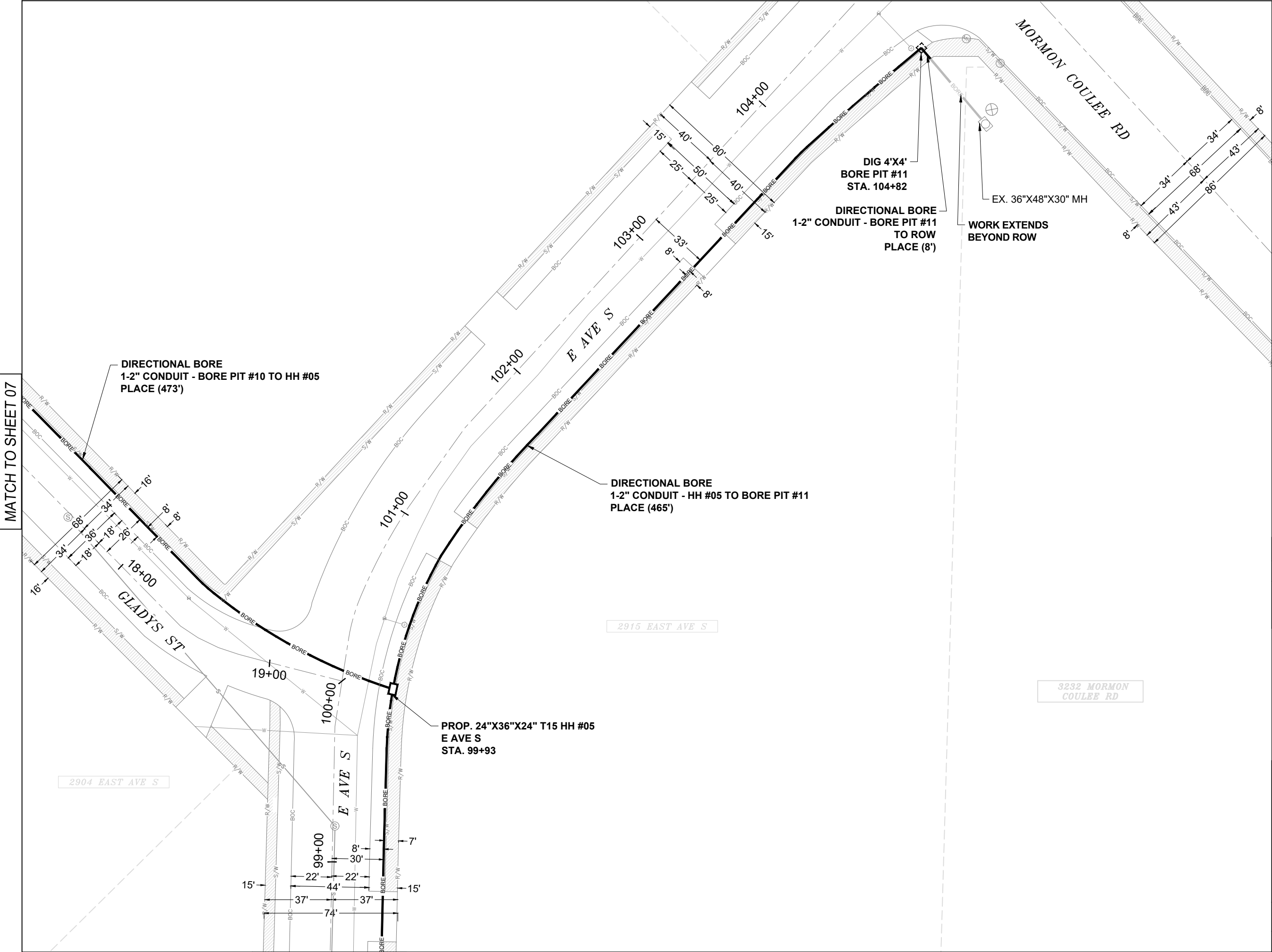
EXCAVATION DATA

PROPOSED UTILITY	DIRT
(3) 4'X4' BORE PIT	48 SQFT
(3) 17"X30"X18" HH	10.62 SQFT

CALL 811 BEFORE YOU DIG.
WISCONSIN TOLL FREE
800-242-8511




CONFIDENTIAL AND PROPRIETARY
LCRSWIXB

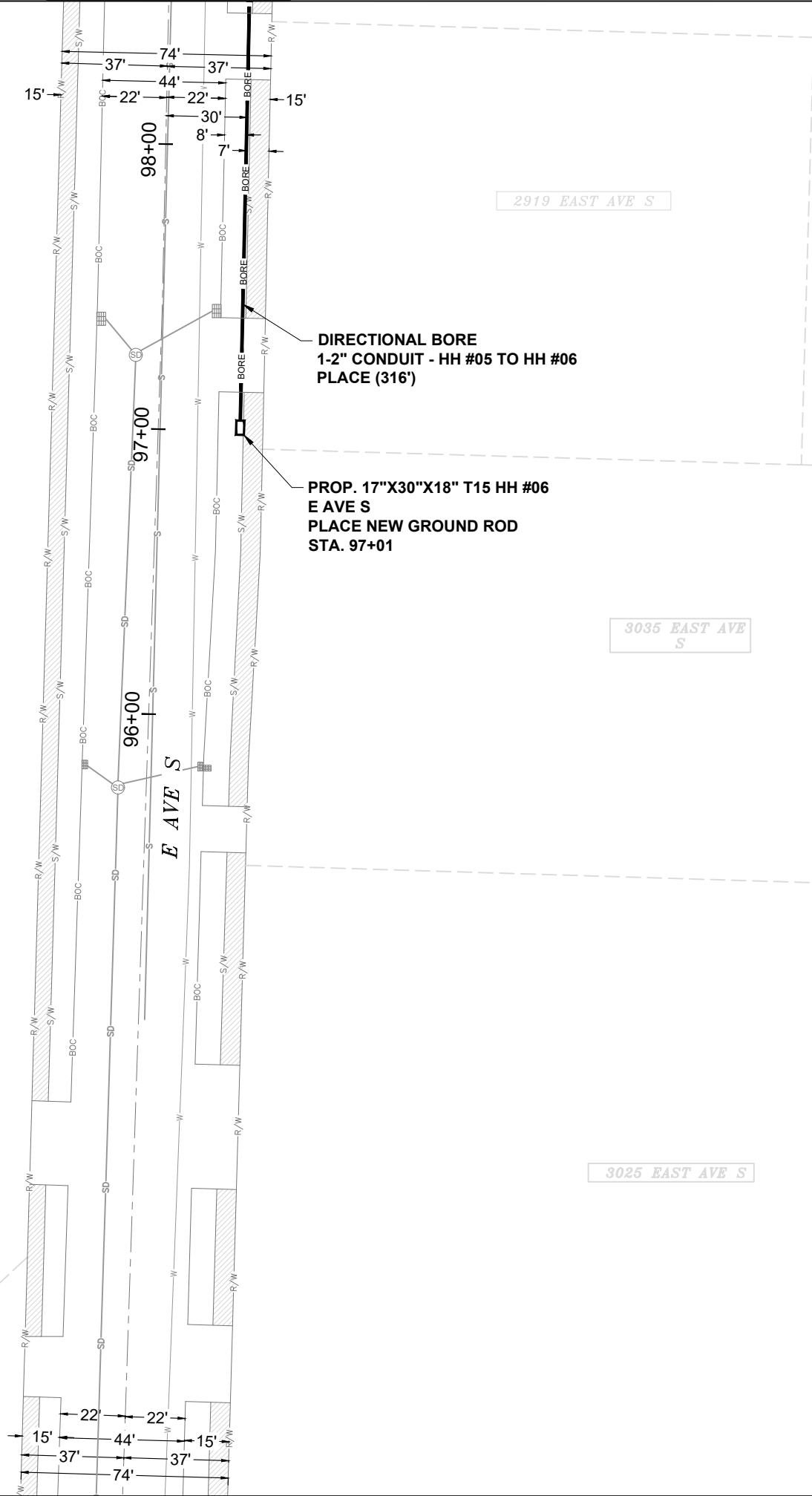


MATCH TO SHEET 07

MATCH TO SHEET 09

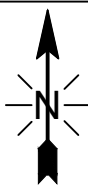


EXCAVATION DATA	
PROPOSED UTILITY	DIRT
(1) 4'X4' BORE PIT	16 SQFT
(1) 24"X36"X24" HH	06 SQFT
CALL 811 BEFORE YOU DIG. WISCONSIN TOLL FREE 800-242-8511	
	
 A CONGRUEX® COMPANY	
CONFIDENTIAL AND PROPRIETARY LCRSWIXB	
08 OF 09	
SCALE: 1" = 50'	



DIRECTIONAL BORE
1-2" CONDUIT - HH #05 TO HH #06
PLACE (316')

PROP. 17"X30"X18" T15 HH #06
E AVE S
PLACE NEW GROUND ROD
STA. 97+01



EXCAVATION DATA	
PROPOSED UTILITY	DIRT
(1) 17"X30"X18" HH	3.54 SQFT
CALL 811 BEFORE YOU DIG. WISCONSIN TOLL FREE 800-242-8511	
	
 A CONGRUEX® COMPANY	
CONFIDENTIAL AND PROPRIETARY LCRSWIXB	
09 OF 09	
SCALE: 1" = 50'	