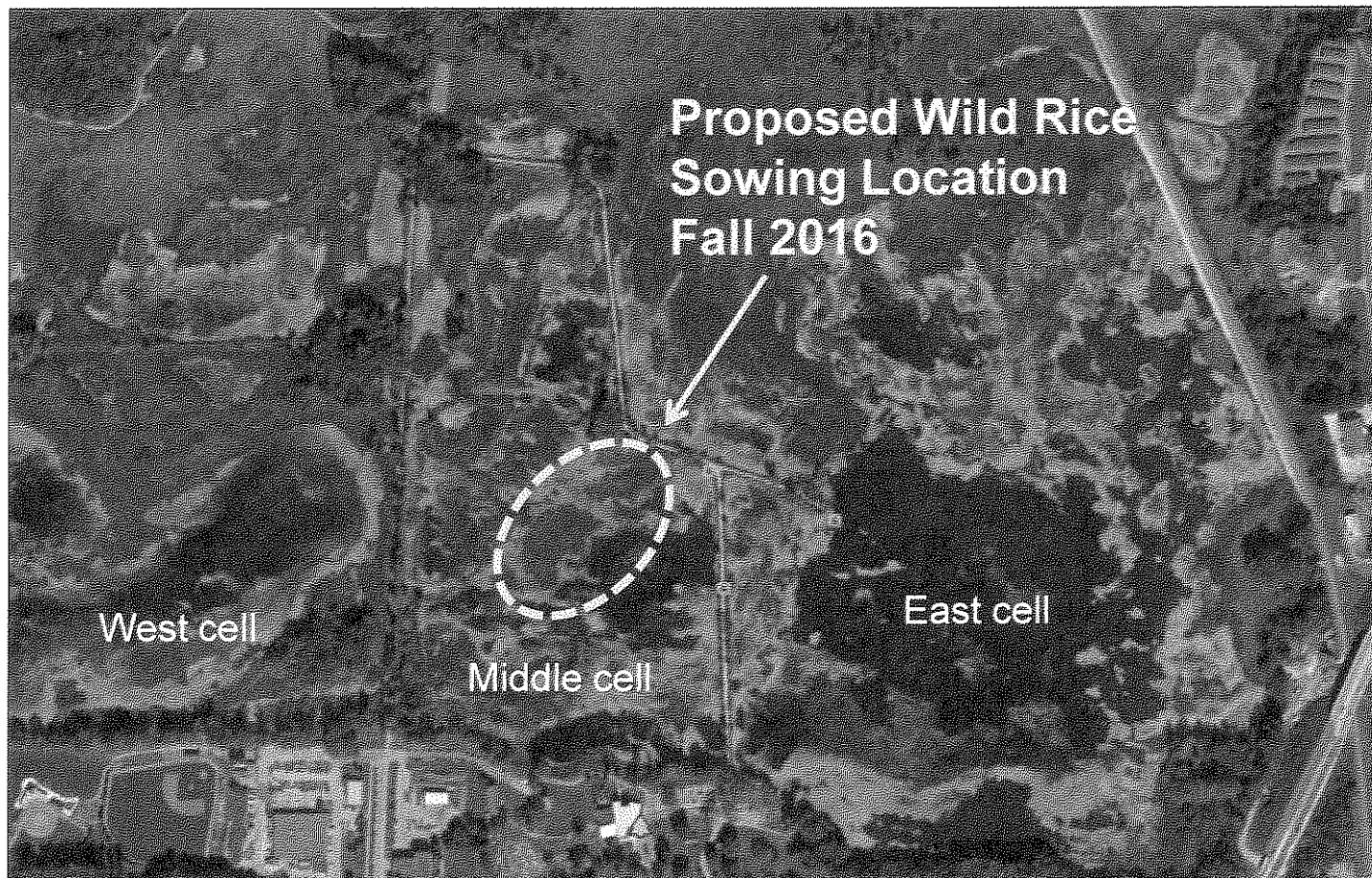


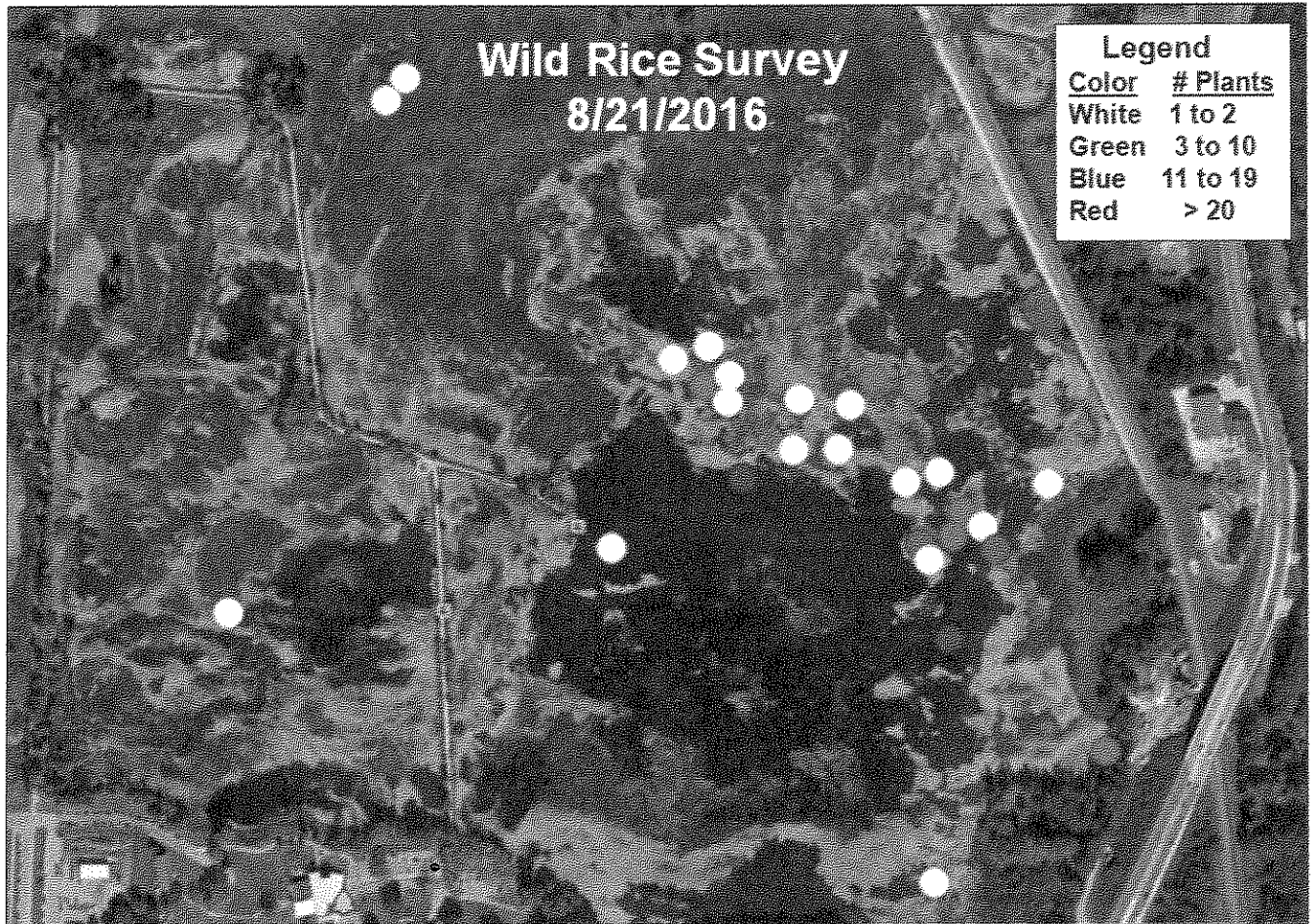
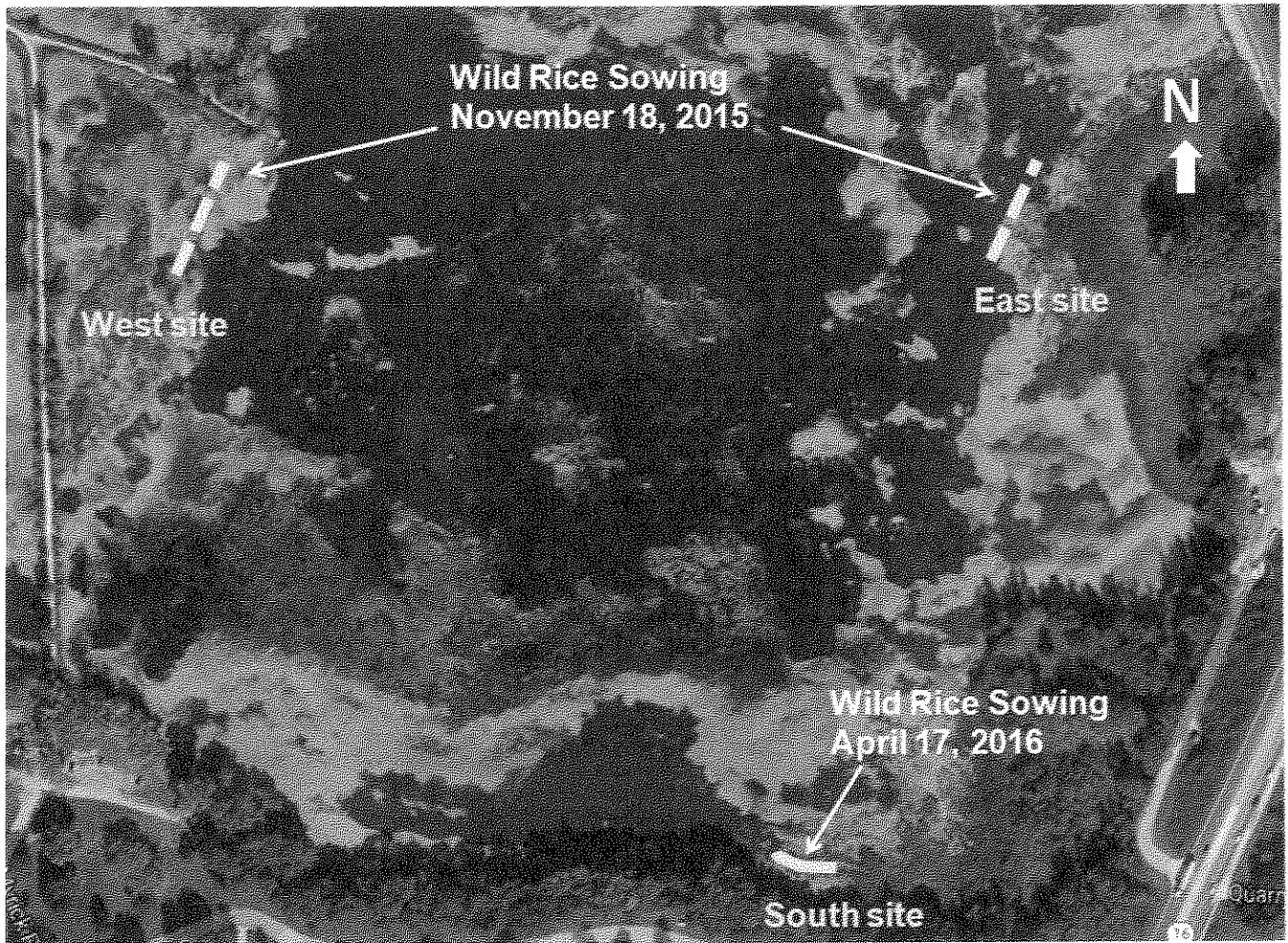
## La Crosse Wild Rice Seeding Proposal - Fall 2016

Wild rice (*Zizania sp.*) is an extremely important native aquatic plant providing food for waterfowl, song birds and habitat for birds and nursery areas for small fish and invertebrates. The Friends of the La Crosse River Marsh obtained permission from the City of La Crosse and the Wisconsin DNR (property owners) in September 2015 to conduct a pilot study to see if it would be possible to increase the abundance of this important plant in the La Crosse Marsh by sowing locally obtained wild rice seed into the marsh at select locations. This activity is consistent with the Friend's strategic plan concerning vegetation restoration and management activities in the marsh.

The results of the previous wild rice sowing into the La Crosse Marsh showed some success, but production was likely restricted by wildlife foraging and substantial duckweed and filamentous algae in 2016. The Friends group would like to obtain permission from the City of La Crosse to repeat this sowing at new locations in the Fall of 2016. A report describing the initial sowing efforts has been prepared and available for review. A report describing this second sowing effort would be prepared by September 1, 2017.

Contact: John Sullivan, Friends of the La Crosse River Marsh (608-785-2194)





# An Example Bed of Wild Rice in the La Crosse Marsh

