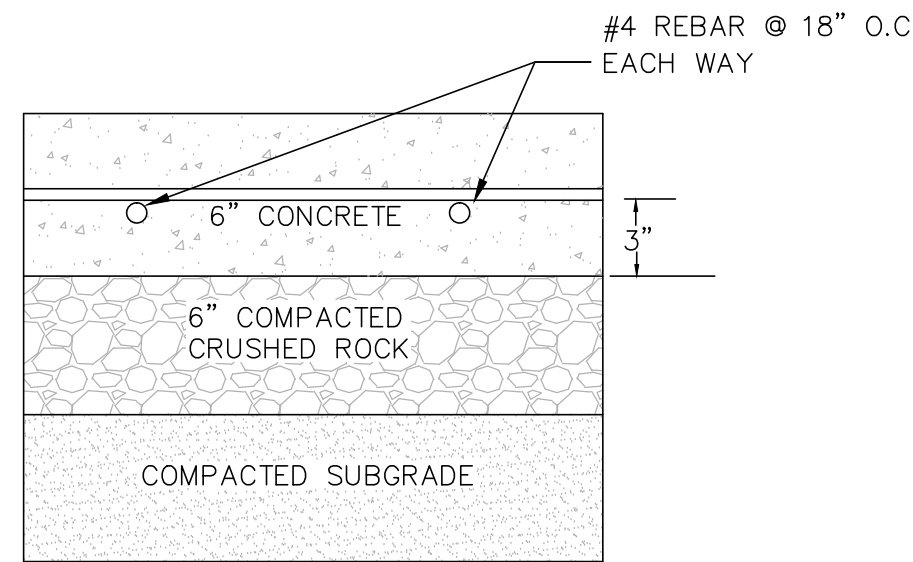
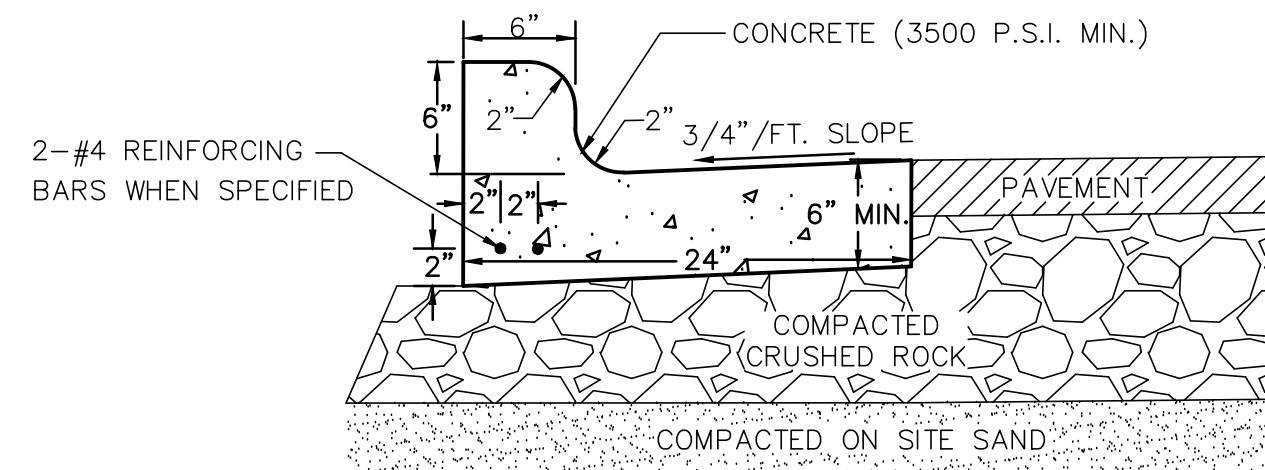


PLACE PAVEMENT USING ONE 1 1/2" SURFACE LIFT OVER ONE 1 1/2" BINDER LIFT.

A LIGHT DUTY PAVEMENT SECTION DETAIL
C2 NO SCALE



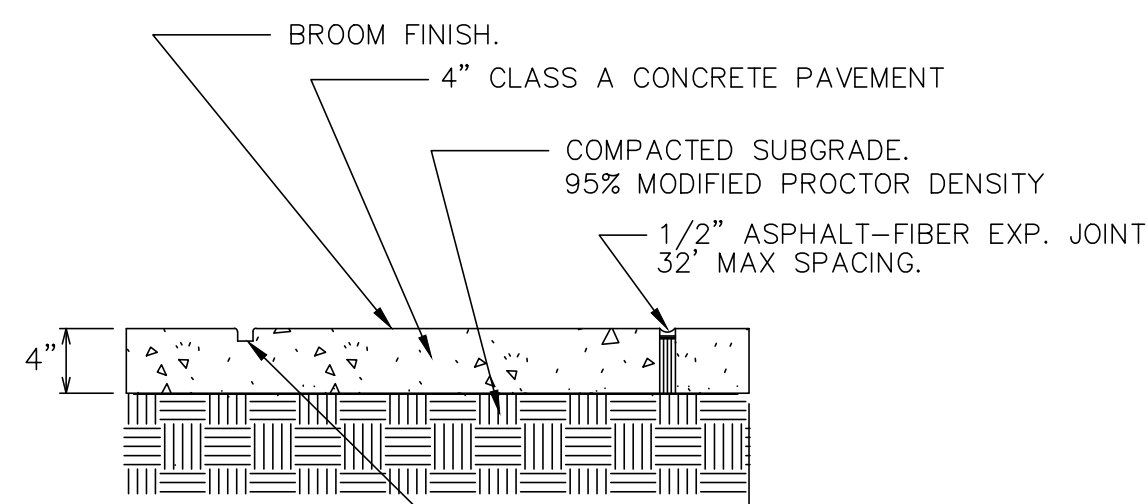
B CONCRETE PAVEMENT SECTION DETAIL
C2 NO SCALE



NOTE:

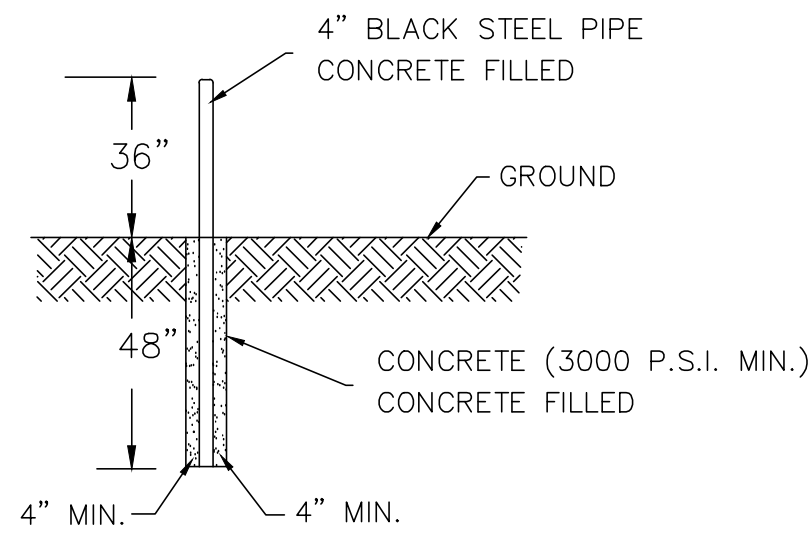
- CONTROL JOINTS SHALL CONFORM WITH WISDOT 601.3.6
- THE BOTTOM OF THE CURB AND GUTTER MAY BE CONSTRUCTED FLAT OR PARALLEL TO THE SLOPE OF THE BASE COURSE PROVIDED A MINIMUM 6" GUTTER THICKNESS IS MAINTAINED

C TYPICAL 24" CURB AND GUTTER SECTION
C2 NO SCALE



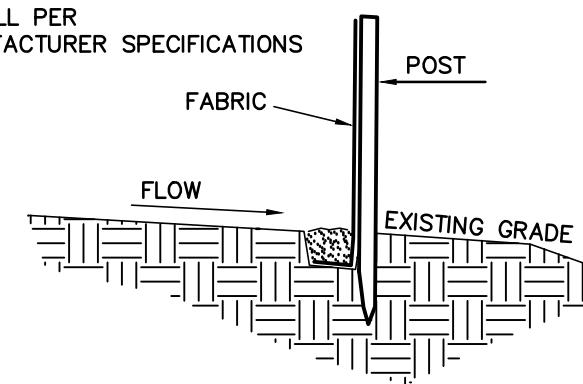
NOTE: SIDEWALK IN DRIVEWAY SECTIONS SHALL BE 6" THICK

D SIDEWALK PAVING AND JOINTING
C2 NO SCALE

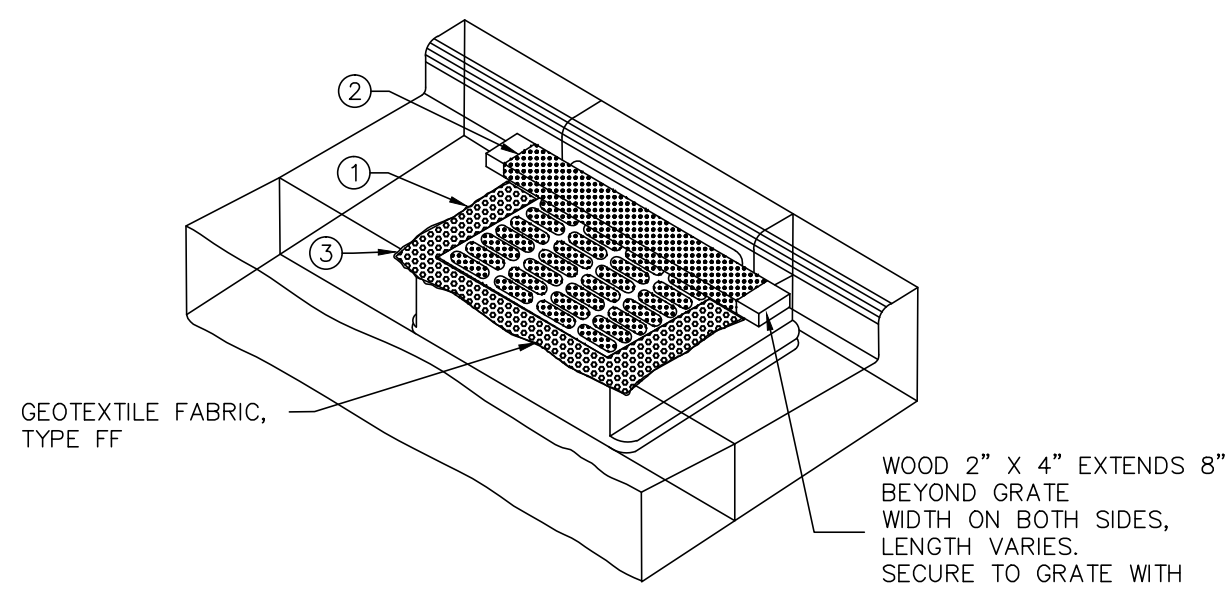


E PIPE BOLLARD DETAIL
C2 NO SCALE

NOTE:
-REFER TO:
WISCONSIN DEPARTMENT OF NATURAL RESOURCES
CONSTRUCTION SITE EROSION & SEDIMENT CONTROL
STANDARD SILT FENCE (1056)
-INSTALL PER
MANUFACTURER SPECIFICATIONS



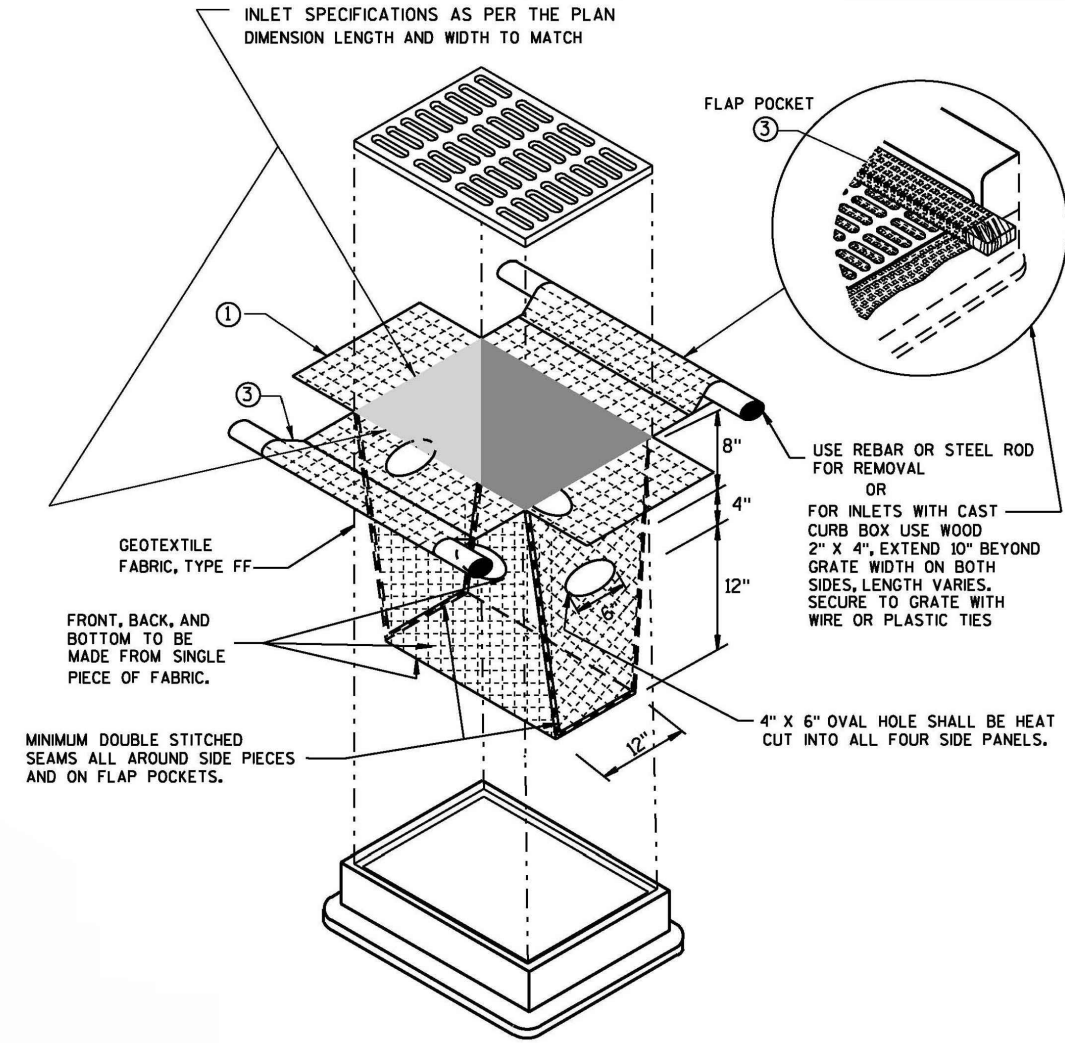
F TYPICAL SILT FENCE INSTALLATION
C3 NO SCALE



GENERAL NOTES

- INLET PROTECTION DEVICES SHALL BE MAINTAINED OR REPLACED AT THE DIRECTION OF THE ENGINEER.
- MANUFACTURED ALTERNATIVES APPROVED AND LISTED ON THE WIS. D.O.T.'S EROSION CONTROL PRODUCT ACCEPTABILITY LIST MAY BE SUBSTITUTED.
- WHEN REMOVING OR MAINTAINING INLET PROTECTION, CARE SHALL BE TAKEN SO THAT THE SEDIMENT TRAPPED ON THE GEOTEXTILE FABRIC DOES NOT FALL INTO THE INLET. ANY MATERIAL FALLING INTO THE INLET SHALL BE REMOVED IMMEDIATELY.
- FINISHED SIZE, INCLUDING FLAP POCKETS WHERE REQUIRED SHALL EXTEND A MINIMUM OF 10" AROUND THE PERIMETER TO FACILITATE MAINTENANCE OR REMOVAL.
 - FOR INLET PROTECTION, TYPE C (WITH CURB BOX), AN ADDITIONAL 18" OF FABRIC IS WRAPPED AROUND THE WOOD AND SECURED WITH STAPLES. THE WOOD SHALL NOT BLOCK THE ENTIRE HEIGHT OF THE CURB BOX OPENING.
 - FLAP POCKETS SHALL BE LARGE ENOUGH TO ACCEPT WOOD 2X4.

G INLET PROTECTION, TYPE C (WITH CURB BOX)
C3 NO SCALE

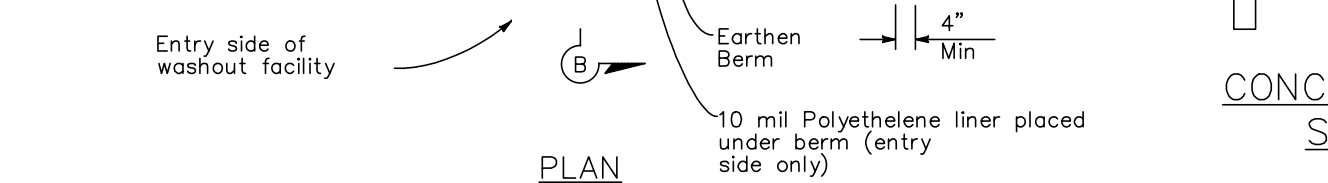
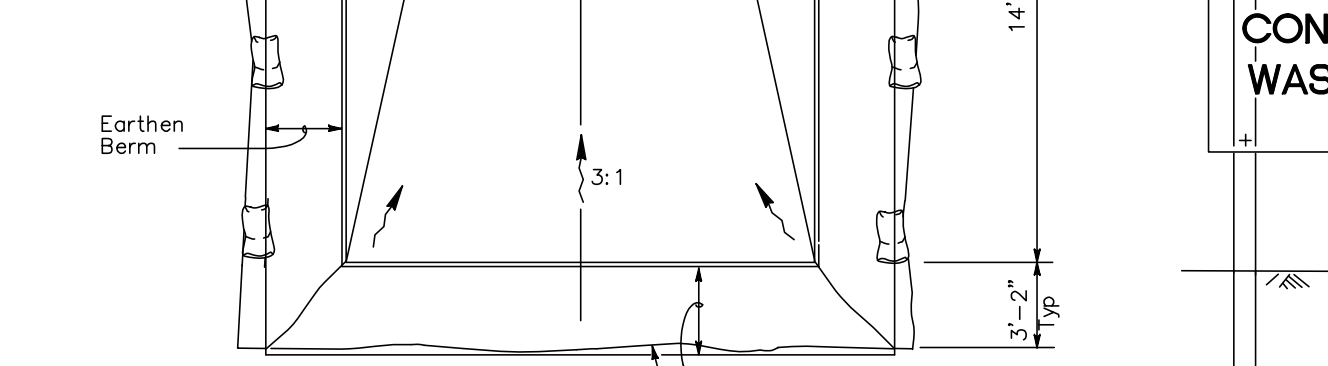
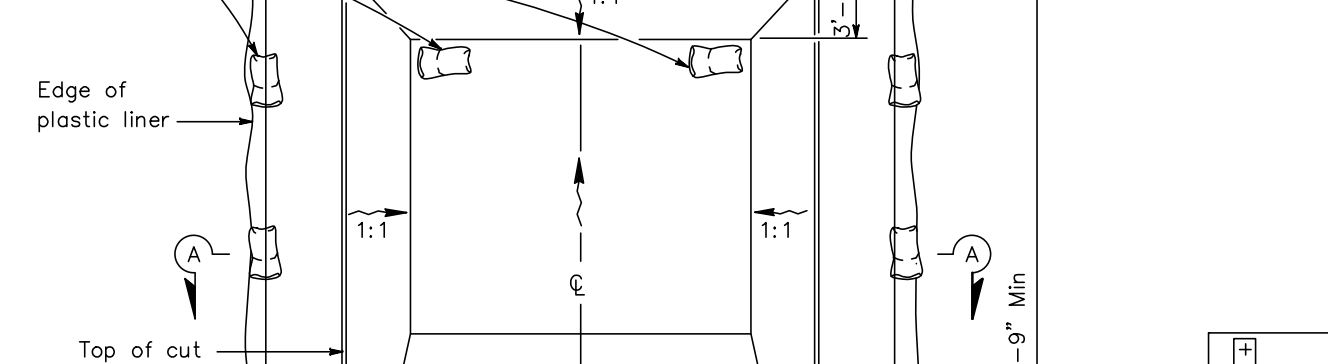
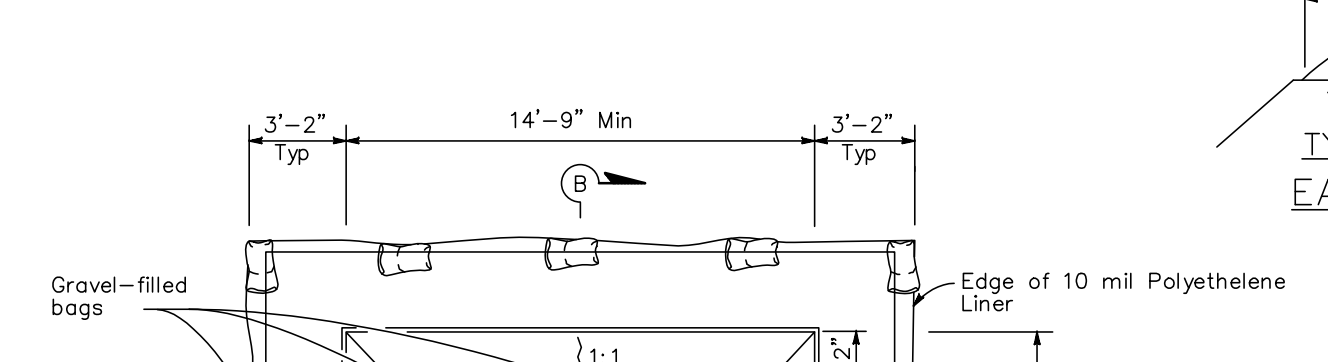
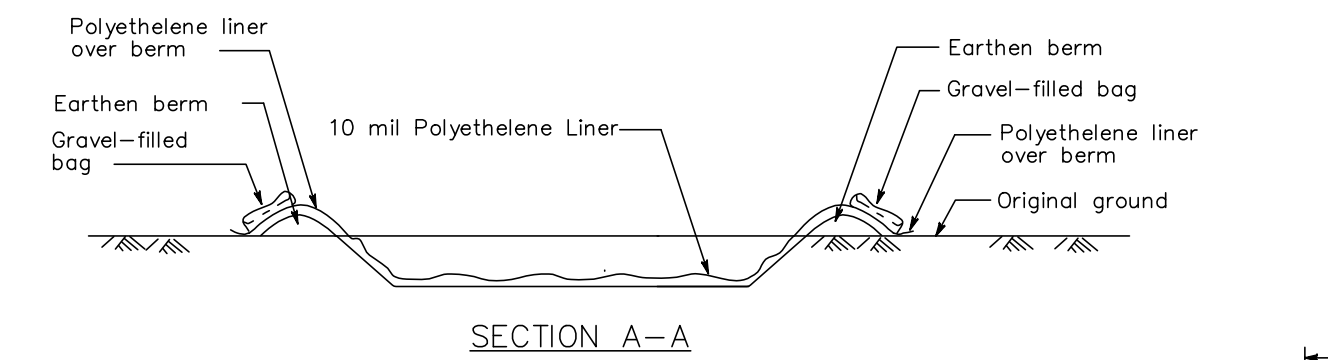
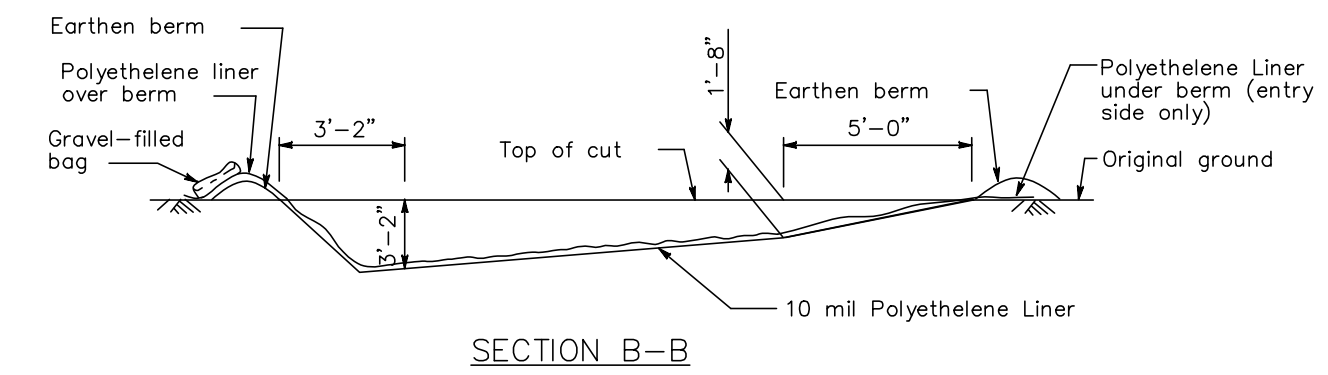


INLET PROTECTION, TYPE D
(CAN BE INSTALLED IN ANY INLET TYPE WITH OR WITHOUT A CURB BOX AS PER NOTE ②.)

GENERAL NOTES

- INLET PROTECTION DEVICES SHALL BE MAINTAINED OR REPLACED AT THE DIRECTION OF THE ENGINEER.
- MANUFACTURED ALTERNATIVES APPROVED AND LISTED ON THE DEPARTMENT'S EROSION CONTROL PRODUCT ACCEPTABILITY LIST MAY BE SUBSTITUTED.
- WHEN REMOVING OR MAINTAINING INLET PROTECTION, CARE SHALL BE TAKEN SO THAT THE SEDIMENT TRAPPED ON THE GEOTEXTILE FABRIC DOES NOT FALL INTO THE INLET. ANY MATERIAL FALLING INTO THE INLET SHALL BE REMOVED IMMEDIATELY.
- FINISHED SIZE, INCLUDING FLAP POCKETS WHERE REQUIRED, SHALL EXTEND A MINIMUM OF 10" AROUND THE PERIMETER TO FACILITATE MAINTENANCE OR REMOVAL.
 - FOR INLET PROTECTION, TYPE C (WITH CURB BOX), AN ADDITIONAL 18" OF FABRIC IS WRAPPED AROUND THE WOOD AND SECURED WITH STAPLES. THE WOOD SHALL NOT BLOCK THE ENTIRE HEIGHT OF THE CURB BOX OPENING.
 - FLAP POCKETS SHALL BE LARGE ENOUGH TO ACCEPT WOOD 2X4.

H INLET PROTECTION, TYPE D
C3 NO SCALE



I TEMPORARY CONCRETE WASHOUT FACILITY
C3 NO SCALE

REVISIONS	BY

PARAGON ASSOCIATES
Environmental Design & Consulting
Civil Engineering · Landscape Architecture · Surveying
632 COPELAND AVENUE · LA CROSSE, WI 54603
Tel: 608.781.3110 Fax: 608.781.3197 Paragon-Assoc.biz

PREPARED FOR:
XXXX

ADVANCED FIBER PRODUCTS - ADDITION
2970 LUOYANG AVENUE
LA CROSSE, WISCONSIN
DETAIL

DRAWN
C.G.
PROJECT No
15-086
DATE
09/18/2015
SCALE
1"=30'
CAD FILE
15-086 Advanced Fiber Add 02
SHEET

C5