



# LA CROSSE CENTER EXPANSION & RENOVATION UTILITY DUCT SHORING

LA CROSSE, WI

**GENERAL NOTES**

DO NOT SCALE DIMENSIONS FROM DRAWINGS.  
 ADHERE STRICTLY TO ALL OSHA SAFETY RULES AND REGULATIONS.  
 THE EXISTING CONDITIONS SHOWN ON THE DRAWINGS ARE APPROXIMATE. ACTUAL FIELD CONDITIONS MAY VARY. THE CONTRACTOR SHALL VERIFY EXISTING FIELD CONDITIONS PERTINENT TO THE PERFORMANCE OF THE WORK. ANY DISCREPANCIES BETWEEN THE ACTUAL FIELD CONDITIONS AND THOSE SHOWN ON THE DRAWINGS SHALL BE IMMEDIATELY BROUGHT TO THE ATTENTION OF THE ENGINEER.  
 THE CONTRACTOR SHALL VERIFY ALL DIMENSIONS AND ELEVATIONS ON THIS PLAN PRIOR TO FABRICATION.  
 THE CONTRACTOR SHALL MONITOR THE EARTH RETENTION SYSTEM (ERS) DURING AND AFTER CONSTRUCTION. THE ENGINEER SHALL BE NOTIFIED IMMEDIATELY AT ANY SIGNS OF MOVEMENT OR DISTRESS.  
 DURING THE CONSTRUCTION PROCESS, THE CONTRACTOR SHALL HAVE THE CONSTRUCTION OF THE ERS INSPECTED BY A QUALIFIED PERSON. THE QUALIFIED PERSON SHALL CERTIFY IN WRITING THAT THE ERS WAS BUILT IN ACCORDANCE WITH THE PLANS AND SPECIFICATIONS. ANY MODIFICATIONS TO THE SYSTEM NOTED BY THE QUALIFIED PERSON SHALL BE SUBMITTED TO THE ENGINEER FOR APPROVAL.  
 USED STEEL SHALL BE IN GOOD WORKING CONDITION.  
 THE CONTRACTOR WILL BE RESPONSIBLE TO PROTECT AND WORK CLEAR OF ALL UTILITIES.  
 THE CONTRACTOR SHALL HAVE ALL UTILITIES LOCATED PRIOR TO ANY EXCAVATION OPERATIONS OR ERS INSTALLATION. CLEARANCE AND PROTECTION OF THE EXISTING UTILITIES IS THE RESPONSIBILITY OF THE CONTRACTOR.

**MATERIAL SPECIFICATIONS**

ALL STRUCTURAL STEEL SHALL CONFORM TO THE FOLLOWING ASTM REQUIREMENTS:  
 HP SECTIONS  $F_y = 50,000$  PSI  
 FABRICATION AND ERECTION OF STRUCTURAL STEEL SHALL CONFORM WITH THE AISC (AMERICAN INSTITUTE OF STEEL CONSTRUCTION), "MANUAL OF STEEL CONSTRUCTION," LATEST EDITION.

**TIMBER LAGGING**

USE ROUGH SAWN TIMBER LAGGING WITH NOMINAL DIMENSIONS OF 3"x12" CUT TO LENGTH SHOWN.  
 TIMBER LAGGING TO CONFORM TO NDS SPECIFICATIONS FOR #2 DFL OR BETTER WITH AN  $F_b = 900$  PSI AND  $F_v = 180$  PSI.

**ERS NOTES**

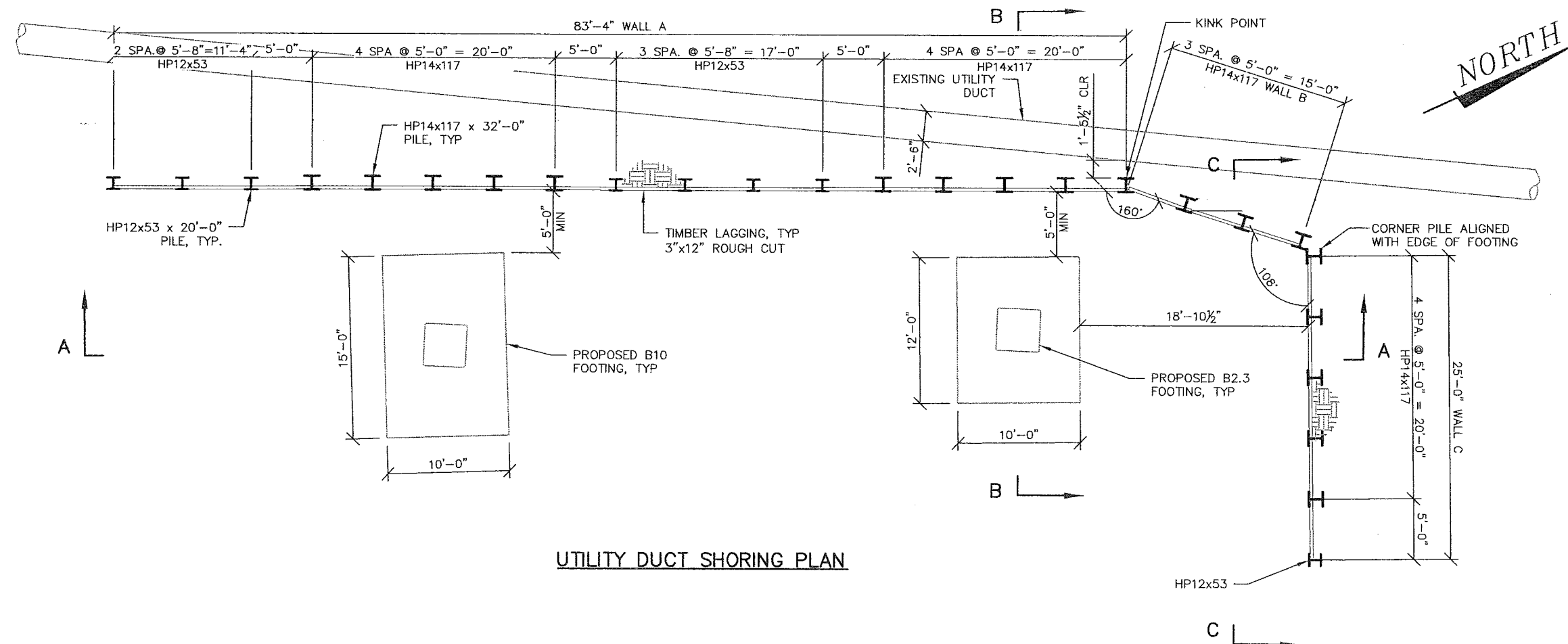
NO SURCHARGE SHALL BE LOCATED WITHIN 15' OF THE ERS.  
 IF ANY SURCHARGE FROM SLOPED GROUND, STRUCTURES, MATERIALS, OR HEAVY EQUIPMENT WILL BE TRIBUTARY TO THE EARTH RETENTION SYSTEM, CONTACT THE ENGINEER FOR APPROVAL PRIOR TO CONSTRUCTION.  
 CONTRACTOR SHALL ENSURE TEMPORARY ERS IS PROTECTED DURING EXCAVATION AND CONSTRUCTION.

**LIST OF DRAWINGS**

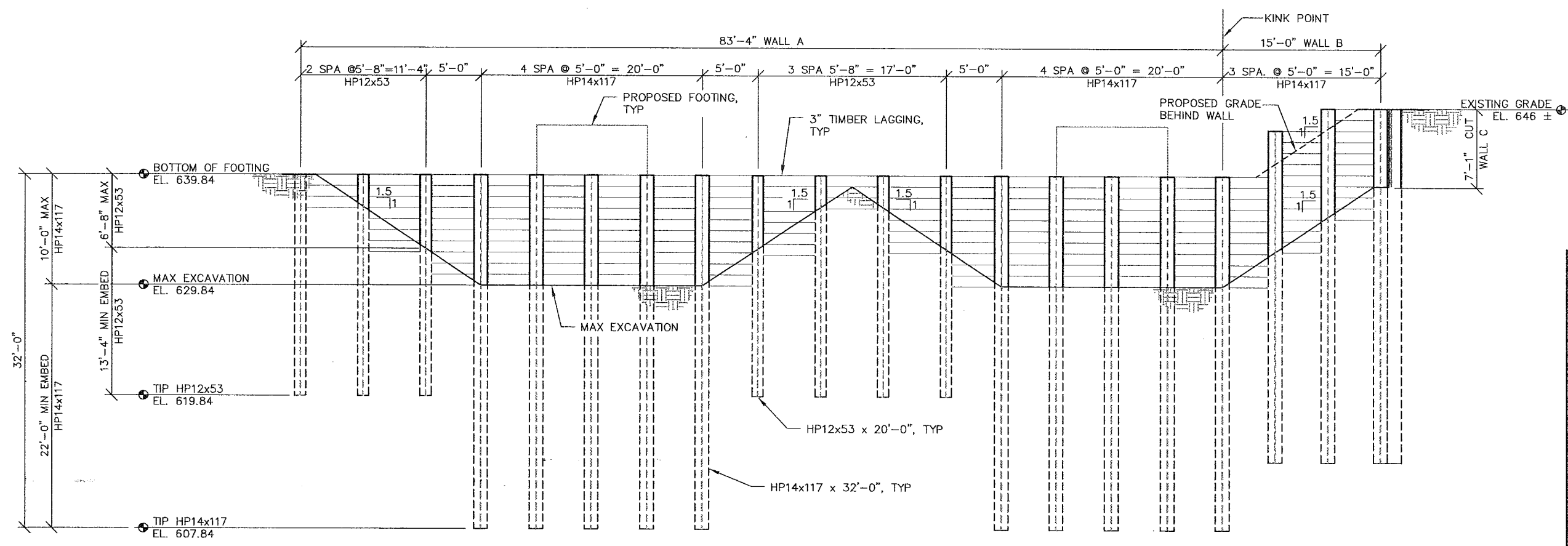
1. COVER SHEET
2. PLAN & ELEVATION
3. SECTION AND DETAILS



| No.   | Date     | Revision      | By           |
|---|----------|---------------|--------------|
|   |          |               |              |
| 619 EAST HOXIE STREET<br>P.O. BOX 429<br>SPRING GREEN, WI 53588<br>PHONE (608) 588-7866<br>FAX (608) 588-7954 |          |               |              |
|   |          |               |              |
| <b>UTILITY DUCT SHORING</b>   |          |               |              |
| WAE # 20021   |          |               |              |
| Const. Spec.  | Drawn By | Plans Checked |              |
|   | KK       | JAP           |              |
| COVER SHEET   |          |               | SHEET 1 OF 3 |



UTILITY DUCT SHORING PLAN



SECTION A-A



| No. | Date | Revision | By |
|-----|------|----------|----|
|     |      |          |    |

619 EAST HOXIE STREET  
P.O. BOX 429  
SPRING GREEN, WI 53588  
PHONE (608) 588-7866  
FAX (608) 588-7954

**WESTBROOK**  
Associated Engineers, Inc.

**STRUPP**  
Engineering & Surveying  
609-701-9822  
ALWAYS  
Reliable

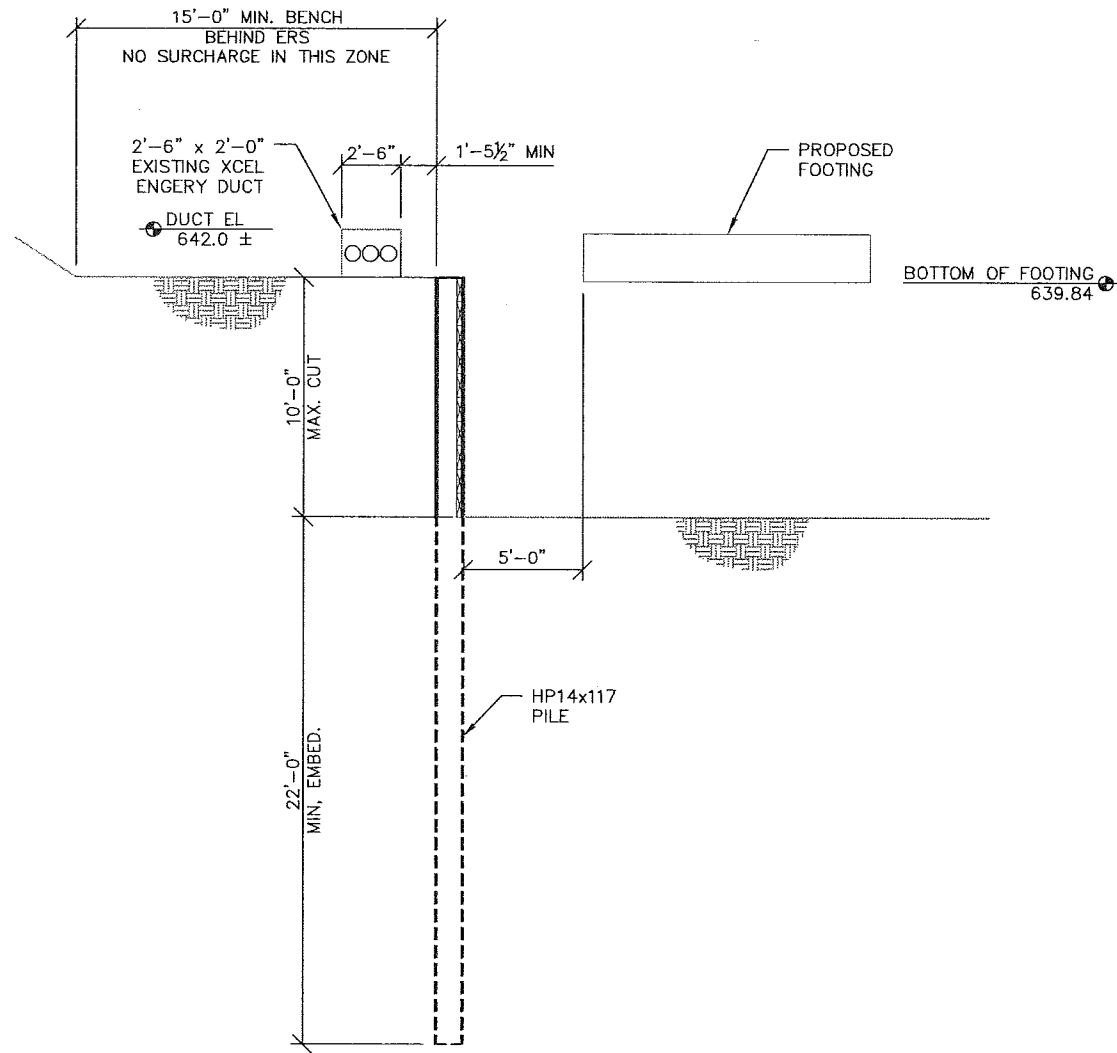
UTILITY DUCT SHORING

WAE # 20021

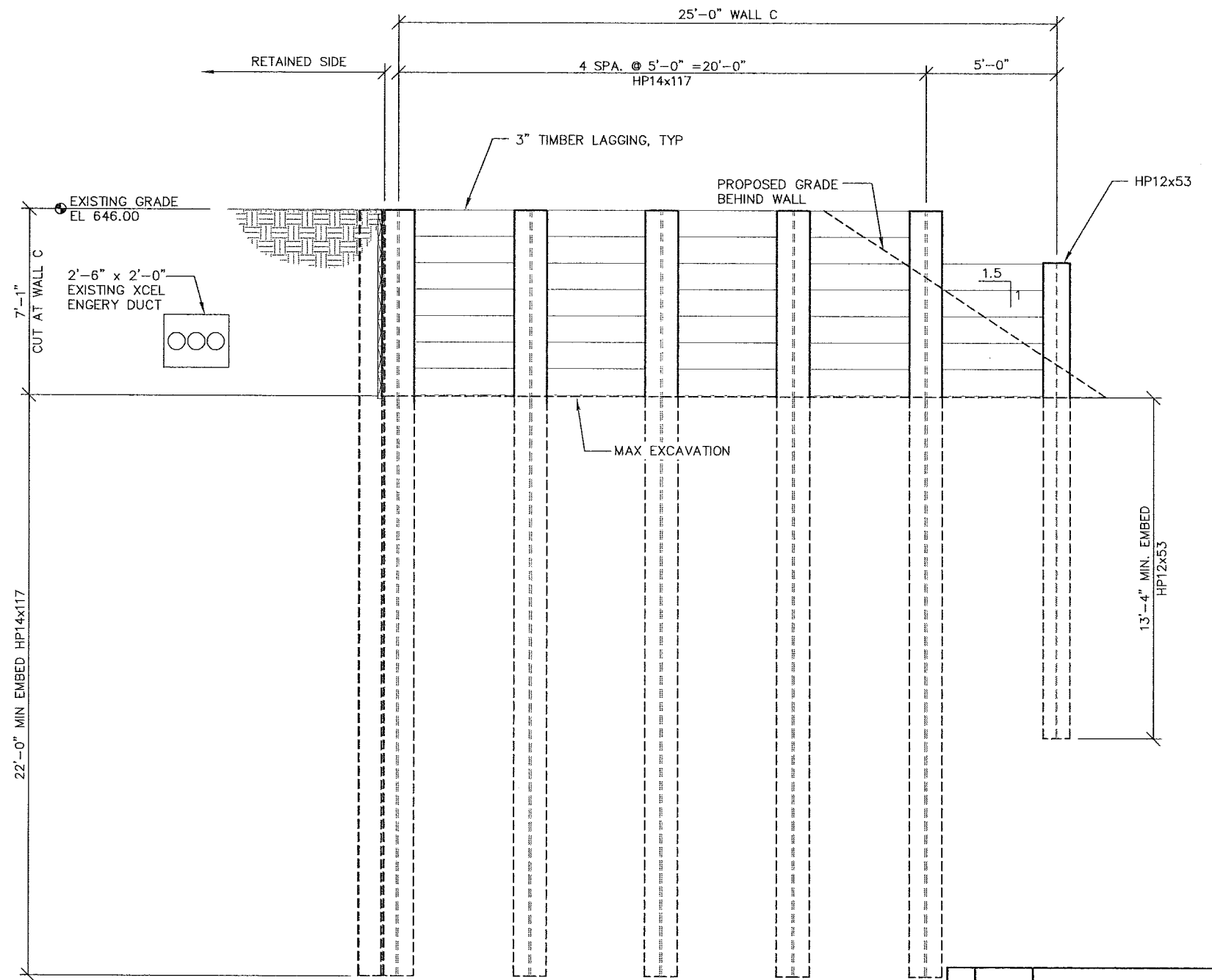
|              |                |                      |
|--------------|----------------|----------------------|
| Const. Spec. | Drawn By<br>KK | Plans Checked<br>JAP |
|--------------|----------------|----------------------|

PLAN & ELEVATION

SHEET 2 OF 3



SECTION B-B



SECTION C-C



| No. | Date | Revision | By |
|-----|------|----------|----|
|     |      |          |    |

619 EAST HOXIE STREET  
P.O. BOX 429  
**WESTBROOK** SPRING GREEN, WI 53588  
Associated Engineers, Inc. PHONE (608) 588-7866  
FAX (608) 588-7954



UTILITY DUCT SHORING

|              |                                    |
|--------------|------------------------------------|
| WAE # 20021  |                                    |
| Const. Spec. | Drawn By: KK<br>Plans Checked: JAP |