



metronet
3701 COMMUNICATIONS WAY
EVANSVILLE, IN, 47715

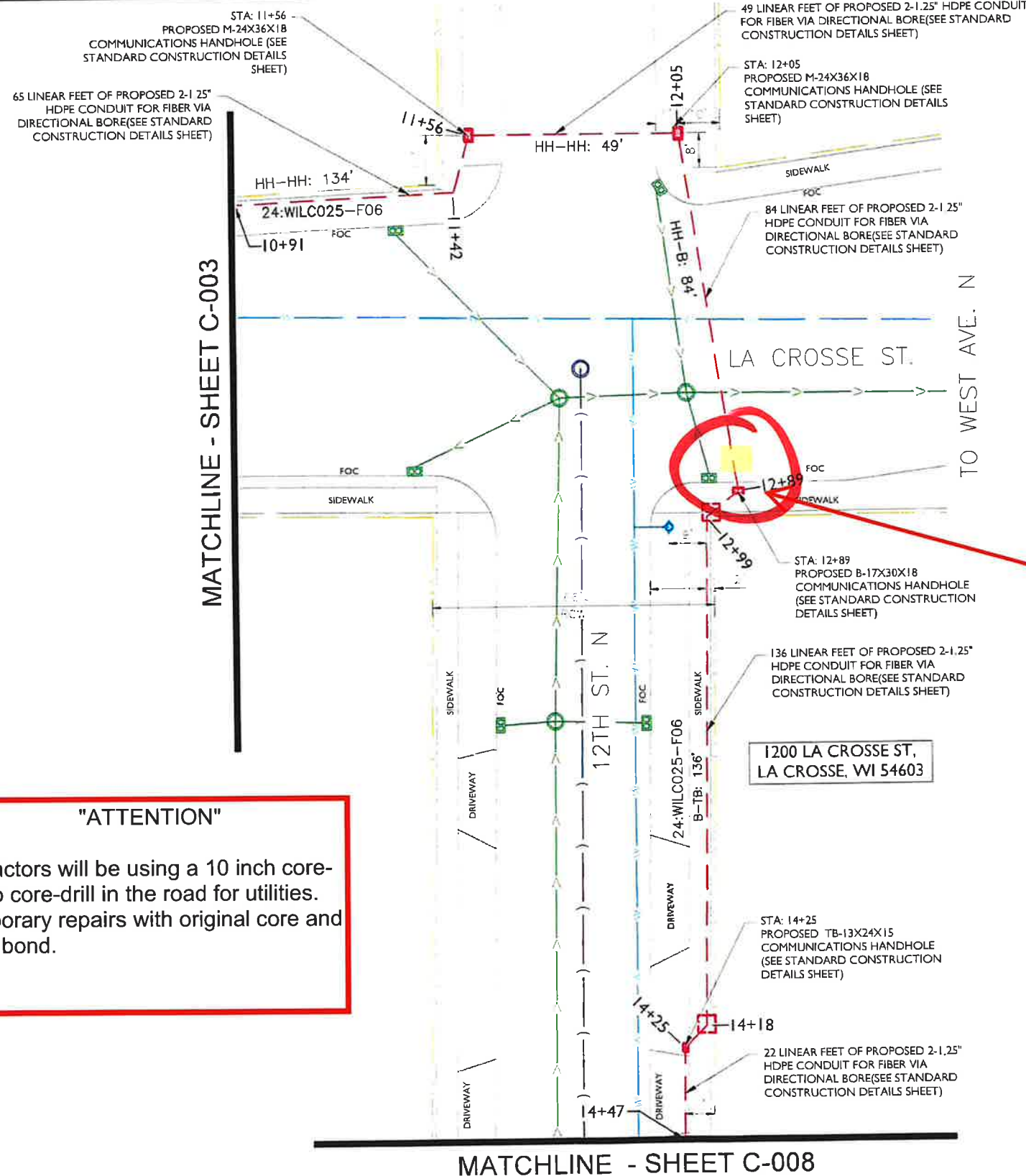
Fullerton

1100 E WOODFIELD ROAD, SUITE 500
SCHAUMBURG, ILLINOIS 60173
TEL: 847-908-8400
DESIGN FIRM NO 184 008202-0006
www.fullerton-us.com

| REV | DATE | DESCRIPTION | BY |
|-----|----------|-------------------|----|
| A | 10/05/23 | ISSUED FOR REVIEW | NS |
| | | | |
| | | | |
| | | | |

I HEREBY CERTIFY THAT THESE DRAWINGS WERE PREPARED BY ME OR UNDER MY DIRECT SUPERVISION AND CONTROL, AND TO THE BEST OF MY KNOWLEDGE AND BELIEF COMPLY WITH THE REQUIREMENTS OF ALL APPLICABLE CODES.

| | |
|------------------|-------------------------------|
| TASK NAME | WILC025-U-S4 |
| TASK DESCRIPTION | FIBER OPTIC CONDUIT PLACEMENT |
| PROJECT AREA | LACROSSE, WI, USA |
| SHEET SCALE | 1" = 30'-0" |
| SHEET TITLE | DESIGN LAYOUT |
| GRID NUMBER | |
| SHEET NUMBER | C-004 |



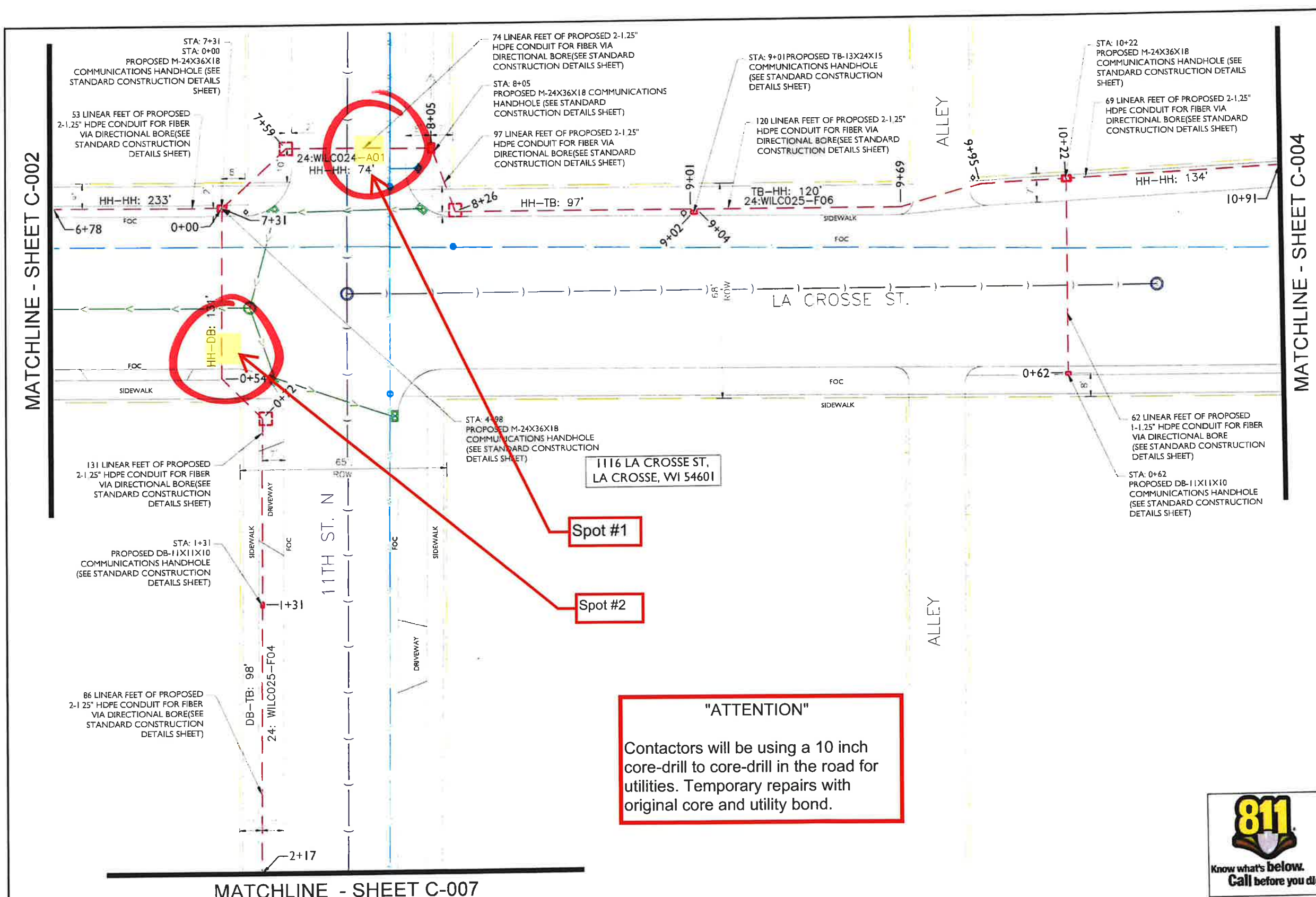
Spot #1

"ATTENTION"
Contractors will be using a 10 inch core-drill to core-drill in the road for utilities. Temporary repairs with original core and utility bond.

- NOTE:
- PROPOSED CONDUIT SHALL AVOID EXISTING SEEPAGE BEDS
 - BURY AT 24" MIN. UNDER SOFT SURFACE-BURY AT 36" MIN. UNDER HARD SURFACE
 - MAINTAIN 1' FROM BACK OF SIDEWALK, WHEN APPLICABLE.

NOTE:
METRONET WILL MAINTAIN 5' CLEARANCE FROM EXISTING INLETS, MANHOLES, VALVES, AND FIRE HYDRANTS & 7.5' CLEARANCE FROM MANHOLES AND CATCH BASINS.





metronet
 3701 COMMUNICATIONS WAY
 EVANSVILLE, IN, 47715

Fullerton
 1100 E WOODFIELD ROAD, SUITE 500
 SCHAUMBURG, ILLINOIS 60173
 TEL: 847-908-8400
 DESIGN FIRM NO. 184 008202-0006
 www.fullerton-us.com

| REV | DATE | DESCRIPTION | BY |
|-----|----------|-------------------|----|
| A | 10/05/23 | ISSUED FOR REVIEW | NS |
| | | | |
| | | | |
| | | | |

I HEREBY CERTIFY THAT THESE DRAWINGS WERE PREPARED BY ME OR UNDER MY DIRECT SUPERVISION AND CONTROL, AND TO THE BEST OF MY KNOWLEDGE AND BELIEF COMPLY WITH THE REQUIREMENTS OF ALL APPLICABLE CODES

TASK NAME
WILC025-U-S4

TASK DESCRIPTION
FIBER OPTIC CONDUIT PLACEMENT

PROJECT AREA
 LACROSSE, WI, USA

SHEET SCALE
 1" = 30'-0"

SHEET TITLE
 DESIGN LAYOUT

GRID NUMBER

SHEET NUMBER
 C-003

Spot #1

Spot #2

"ATTENTION"
 Contactors will be using a 10 inch core-drill to core-drill in the road for utilities. Temporary repairs with original core and utility bond.



- NOTE:
- PROPOSED CONDUIT SHALL AVOID EXISTING SEEPAGE BEDS
 - BURY AT 24" MIN. UNDER SOFT SURFACE-BURY AT 36" MIN. UNDER HARD SURFACE
 - MAINTAIN 1' FROM BACK OF SIDEWALK, WHEN APPLICABLE.

NOTE:
 METRONET WILL MAINTAIN 5' CLEARANCE FROM EXISTING INLETS, MANHOLES, VALVES, AND FIRE HYDRANTS & 7.5' CLEARANCE FROM MANHOLES AND CATCH BASINS.

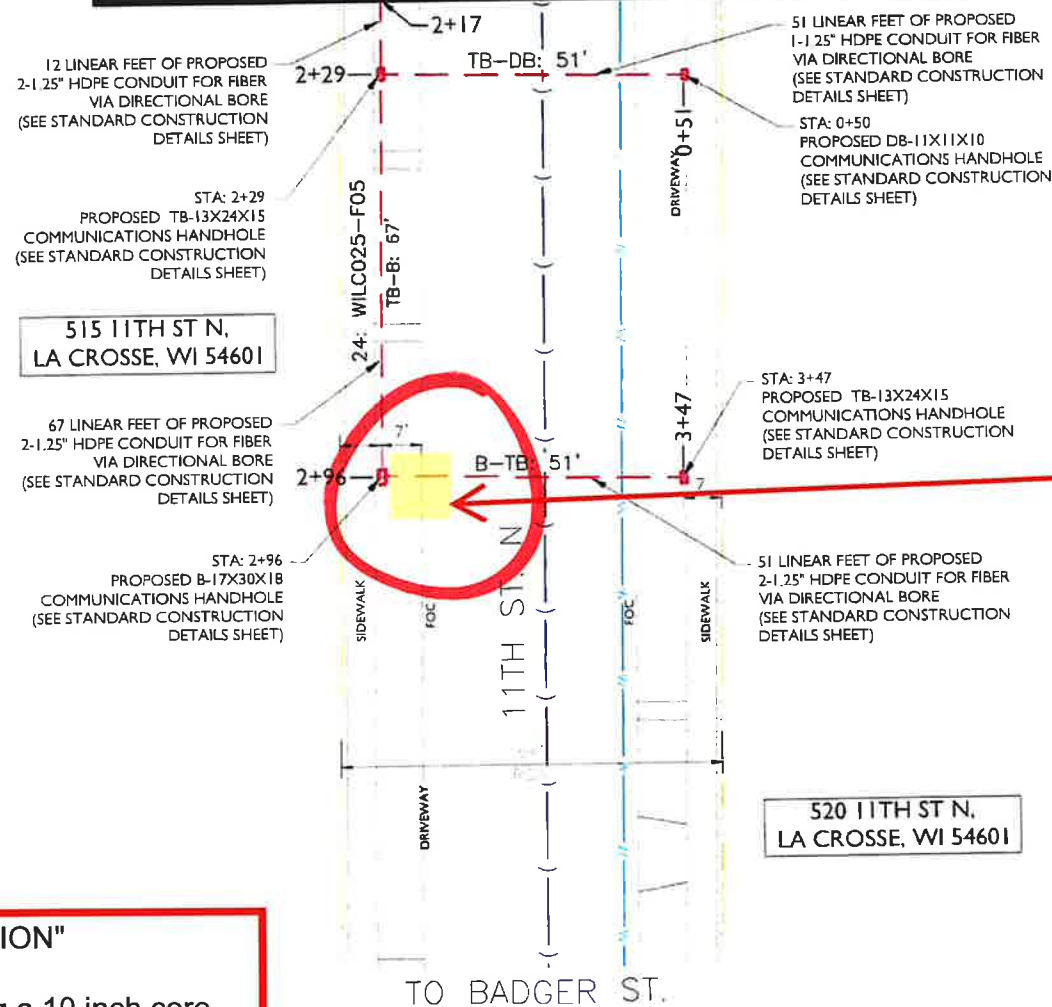
MATCHLINE - SHEET C-003



metronet
3701 COMMUNICATIONS WAY
EVANSVILLE, IN, 47715

Fullerton

1100 E. WOODFIELD ROAD, SUITE 500
SCHALMBURG, ILLINOIS 60173
TEL: 847-908-8400
DESIGN FIRM NO. 184-008202-0006
www.fullerton-us.com



Spot #1

"ATTENTION"
Contractors will be using a 10 inch core-drill to core-drill in the road for utilities. Temporary repairs with original core and utility bond.

| REV | DATE | DESCRIPTION | BY |
|-----|----------|-------------------|----|
| A | 10/05/23 | ISSUED FOR REVIEW | NS |
| | | | |
| | | | |
| | | | |

I HEREBY CERTIFY THAT THESE DRAWINGS WERE PREPARED BY ME OR UNDER MY DIRECT SUPERVISION AND CONTROL, AND TO THE BEST OF MY KNOWLEDGE AND BELIEF COMPLY WITH THE REQUIREMENTS OF ALL APPLICABLE CODES.

TASK NAME
WILC025-U-S4

TASK DESCRIPTION
FIBER OPTIC CONDUIT PLACEMENT

PROJECT AREA
LACROSSE, WI, USA

SHEET SCALE
1" = 30'-0"

SHEET TITLE
DESIGN LAYOUT

GRID NUMBER

SHEET NUMBER
C-007

- NOTE:
- PROPOSED CONDUIT SHALL AVOID EXISTING SEEPAGE BEDS
 - BURY AT 24" MIN. UNDER SOFT SURFACE-BURY AT 36" MIN. UNDER HARD SURFACE
 - MAINTAIN 1' FROM BACK OF SIDEWALK, WHEN APPLICABLE.

NOTE:
METRONET WILL MAINTAIN 5' CLEARANCE FROM EXISTING INLETS, MANHOLES, VALVES, AND FIRE HYDRANTS & 7.5' CLEARANCE FROM MANHOLES AND CATCH BASINS.

