

SITE NOTES

- The location of existing utilities, both underground and overhead are approximate only and have not been independently verified by the owner or its representatives. The contractor shall be responsible for determining the exact location of all existing utilities, whether shown on these plans or not, before commencing work, and shall be fully responsible for any and all damages which might be caused by the contractor's failure to exactly locate and preserve any and all utilities. CALL DIGGERS HOTLINE (800) 242-8511
- The underground locations of the Public Utilities were marked by representatives of those companies. The locations of the privately owned underground utilities were not marked.
- There may be more underground utility installations within the project area that are not shown.
- It shall be the contractor's responsibility to arrange for any necessary inspections by local government that may be required.
- Any and all parties utilizing vertical datum shall always check into at least two (2) benchmarks to avoid mistakes due to hydrant adjustments or transpositional errors. Failure to do so will be considered tantamount to gross negligence and subject the offending party to any damages resulting therefrom.
- All dimensions are to face-of-curb unless otherwise noted.

SITE NOTES

- ① SEE DETAIL (A) FOR ASPHALT PAVEMENT, TYPE 1
- ② SEE DETAIL (A) FOR ASPHALT PAVEMENT, TYPE 2
- ③ SEE DETAIL (B) FOR CONCRETE PAVEMENT SECTION
- ④ SEE DETAIL (C) FOR TYPICAL 24" CURB AND GUTTER SECTION
- ⑤ SEE DETAIL (D) FOR 24" CURB AND GUTTER SECTION - REVERSE SLOPE
- ⑥ SEE DETAIL (E) FOR INTEGRAL CURB/SIDEWALK SECTION
- ⑦ SEE DETAIL (F) FOR END SECTION CURB AND GUTTER
- ⑧ SEE DETAIL (G) FOR CONCRETE PAVING AND JOINTING
- ⑨ SEE DETAIL (H) FOR STANDARD CONCRETE APRON
- ⑩ SEE DETAIL (I) FOR SIDEWALK RAMP
- ⑪ SEE DETAIL (J) FOR PARALLEL SIDEWALK RAMP

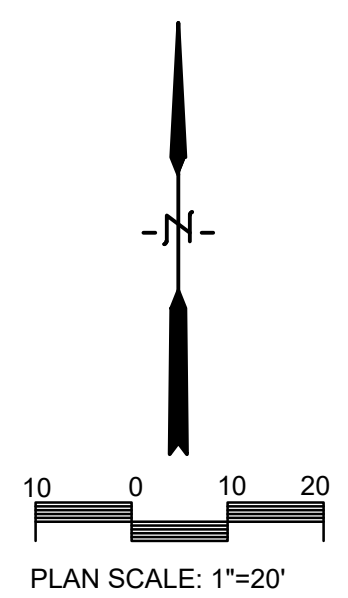
REVISIONS	BY

PARAGON ASSOCIATES
 Environmental Design & Consulting
 CIVIL ENGINEERING · LANDSCAPE ARCHITECTURE · SURVEYING
 632 COPELAND AVENUE · LA CROSSE, WI 54603
 Tel: 608.781.3110 Fax: 608.781.3197 Paragon-Assoc.biz

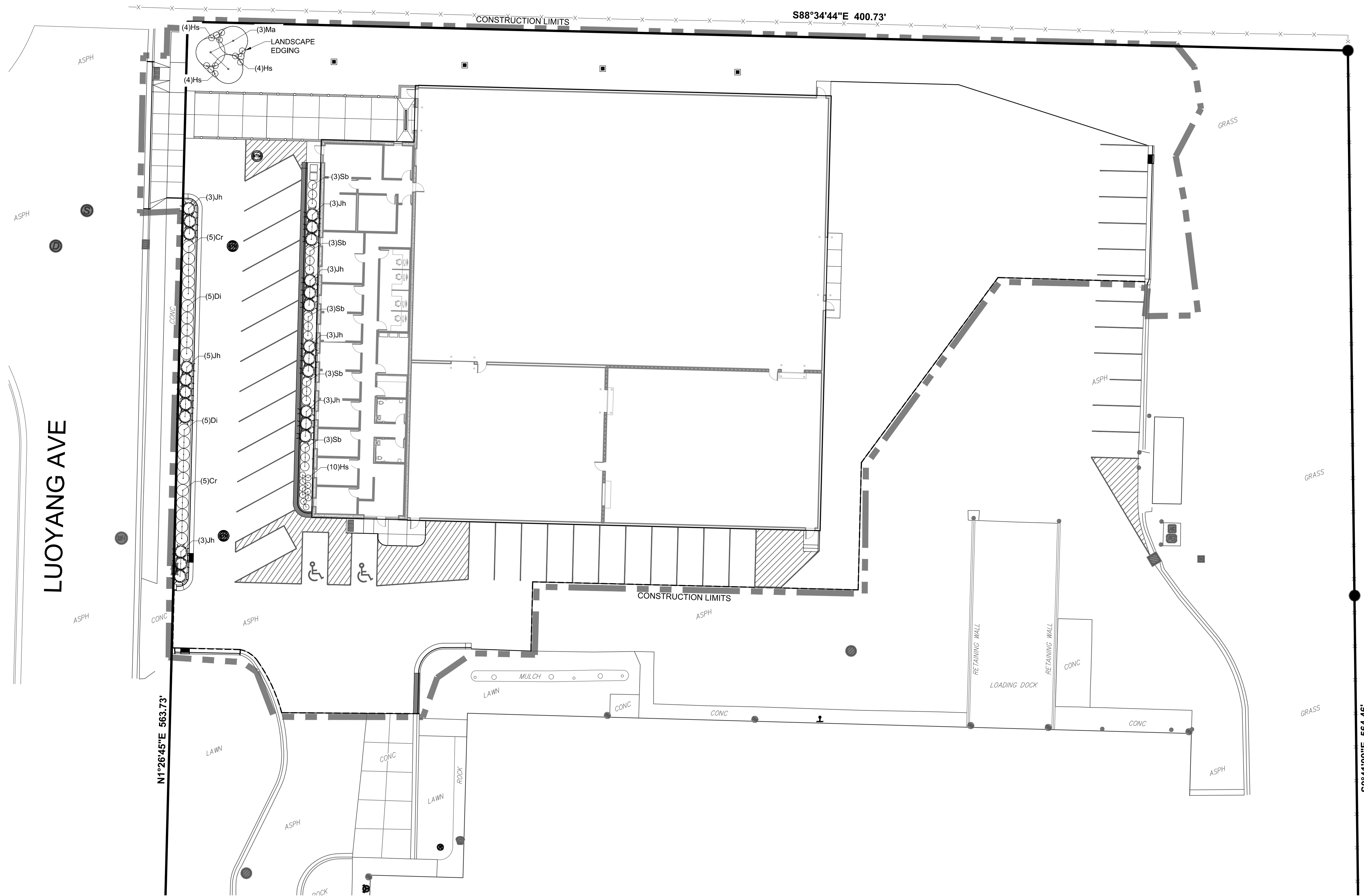
PREPARED FOR:
WIESER BROTHERS
 200 TWILITE STREET
 LA CROSSE, MN

ADVANCED FIBER PRODUCTS - ADDITION
 2970 LUOYANG AVENUE
 LA CROSSE, WISCONSIN
SITE PLAN

DRAWN	C.G.
PROJECT No	23-055
DATE	08/25/23
SCALE	1"=20'
CAD FILE	23-055 Advanced Fiber Add 04
SHEET	



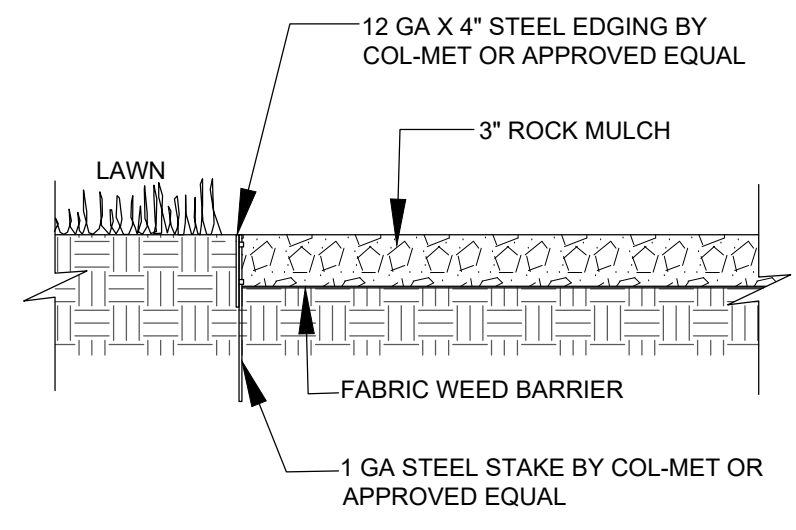
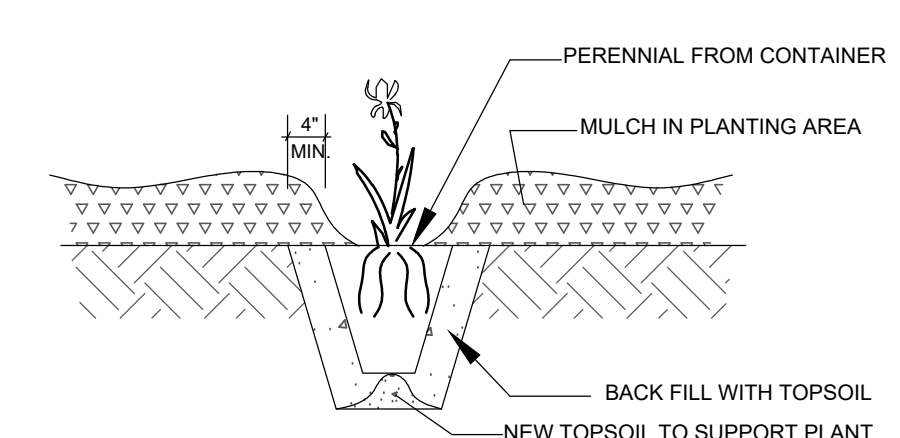
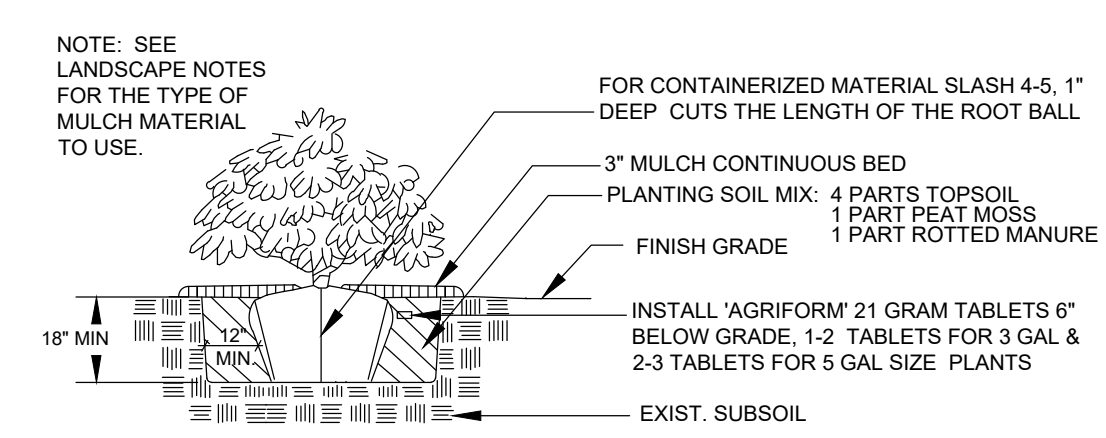
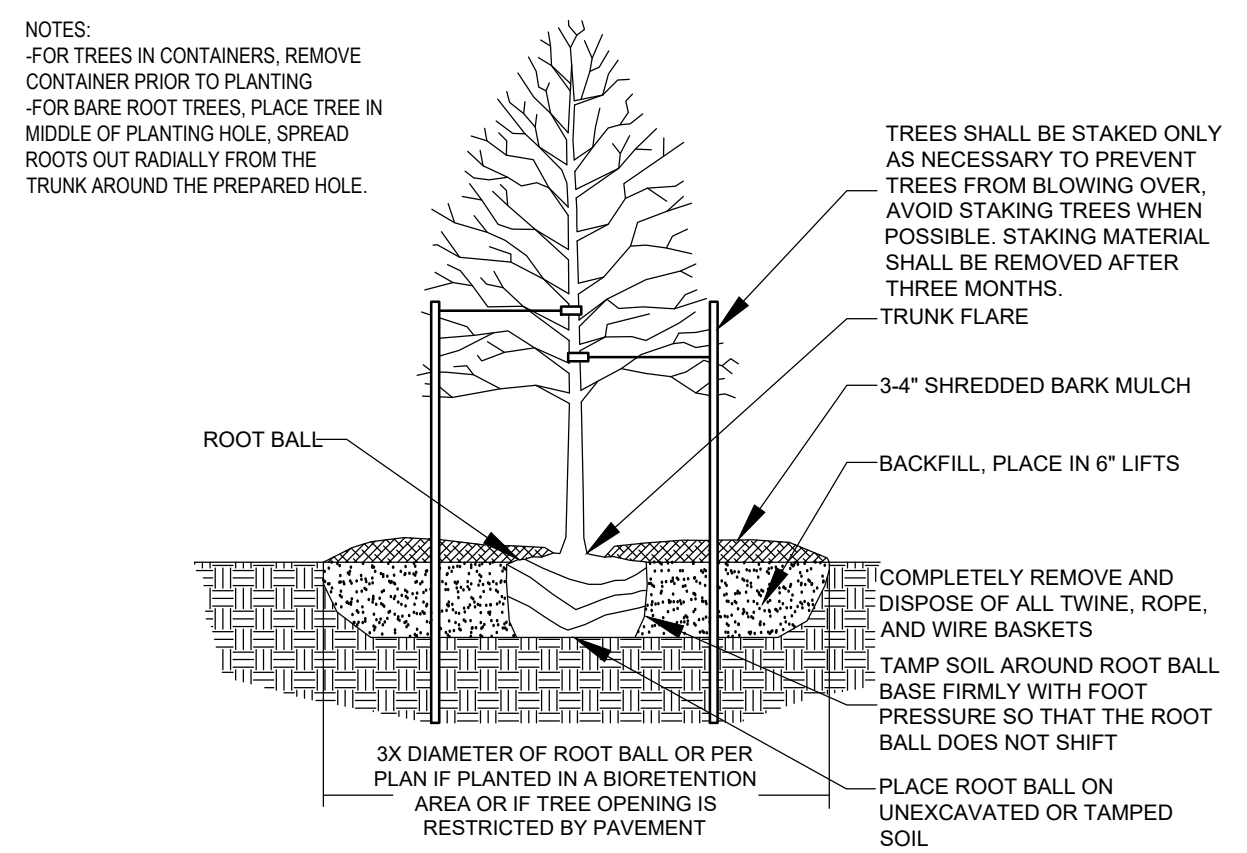
C100



- PLAN NOTES:**
1. VERIFY UTILITY LOCATION BEFORE BEGINNING ANY WORK.
 2. PLANTING BEDS SHALL HAVE 6" TOPSOIL AND 3" OF ROCK MULCH ON LANDSCAPE FABRIC. MATCH ROCK MULCH TO EXISTING. ALL SHADE TREES IN LAWN AREAS SHALL BE MULCHED WITH 4" SHREDDED HARDWOOD BARK MULCH RING.
 3. NEW AND DISTURBED LAWN AREAS SHALL BE RESTORED WITH SEED AND MULCH. REFER TO EROSION CONTROL PLAN.
 4. MODIFICATIONS TO PLANT SPACING MAY BE ADJUSTED IN THE FIELD BY LANDSCAPE CONTRACTOR. LANDSCAPE ARCHITECT SHALL BE NOTIFIED OF ANY PROPOSED CHANGES TO PLANT MATERIALS OR DESIGN.
 5. LANDSCAPE CONTRACTOR SHALL VISIT SITE. INSPECT EXISTING CONDITIONS AND REVIEW PROPOSED PLANTING AND RELATED WORK.
 6. THE LANDSCAPE ARCHITECT'S ESTIMATED QUANTITIES ARE SHOWN IN THE MATERIAL LIST-SCHEDULE FOR THE CONVENIENCE OF THE CONTRACTOR ONLY. CONTRACTOR SHALL VERIFY QUANTITIES SHOWN ON THE PLAN AND SHALL RELY ON THE SCHEDULED QUANTITIES AT THEIR OWN RISK. THE CONTRACTOR SHALL INCLUDE IN THE BID ALL PLANTINGS SHOWN ON THE DRAWINGS, WHETHER INCLUDED IN THE SCHEDULE OR NOT.

PLANT MATERIAL LIST-SCHEDULE

KEY	BOTANICAL NAME COMMON NAME	SIZE	QUANTITY
Cr	Cornus racemosa 'Muszam' Muskingum Dogwood	3 gal	10
Di	Diervilla lonicera Dwarf Bush Honeysuckle	3 gal	10
Hs	Hemerocallis 'Stella d'Oro' Stella d'Oro Daylily	1 gal	22
Jh	Juniperus horizontalis 'Compacta' Andorra Compact Juniper	5 gal	23
Ma	Malus 'Adirondack' Adirondack Crabapple	1 1/2" cal	3
Sb	Spireaea betulifolia 'Tor' Tor Birchleaf Spirea	3 gal	15

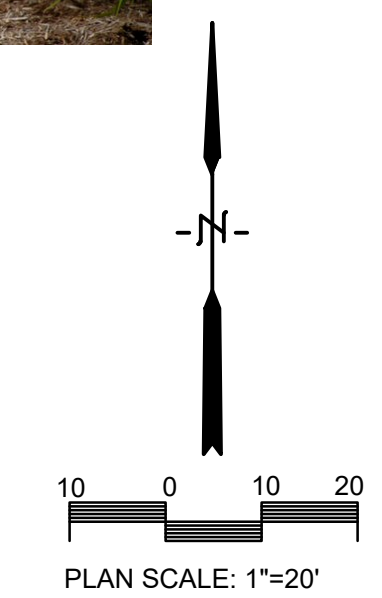


A TREE PLANTING DETAIL - ALL TREES
 L100 NO SCALE

B SHRUB PLANTING DETAIL
 L100 NO SCALE

C POTTED PLANTS PLANTING DETAIL
 L100 NO SCALE

D LANDSCAPE EDGING DETAIL
 L100 NO SCALE



REVISIONS	BY

PARAGON ASSOCIATES
 Environmental Design & Consulting
 CIVIL ENGINEERING · LANDSCAPE ARCHITECTURE · SURVEYING
 632 COPELAND AVENUE · LA CROSSE, WI 54603
 Tel:608.781.3110 Fax:608.781.3197 Paragon-Assoc.biz

PREPARED FOR:
WIESER BROTHERS
 200 TWILITE STREET
 LA CRESCENT, MN

ADVANCED FIBER PRODUCTS - ADDITION
 2970 LUOYANG AVENUE
 LA CROSSE, WISCONSIN
LANDSCAPE PLAN

DRAWN	C.G.
PROJECT No	23-055
DATE	08/25/23
SCALE	1"=20'
CAD FILE	23-055 Advanced Fiber Add 04
SHEET	

L100