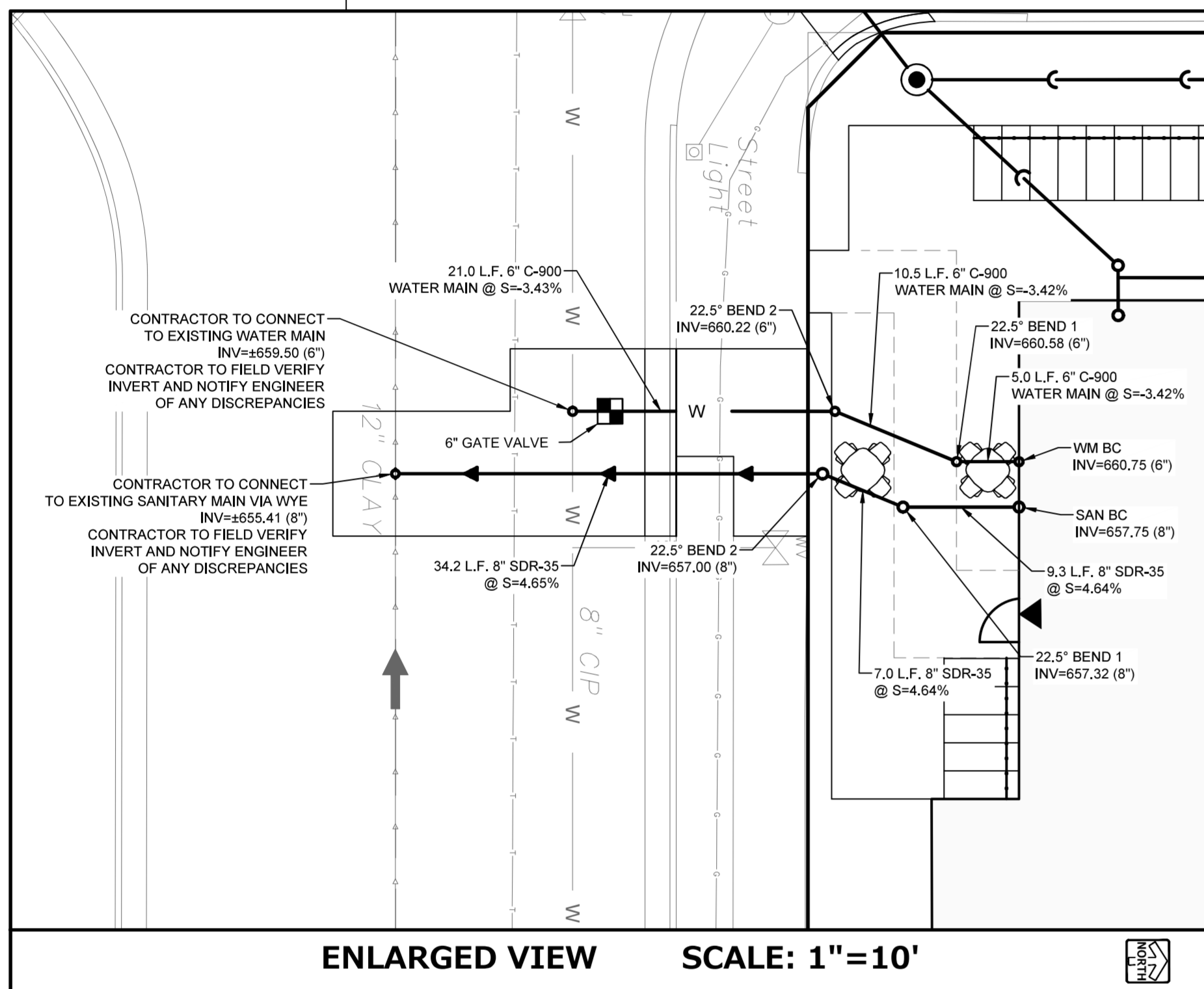


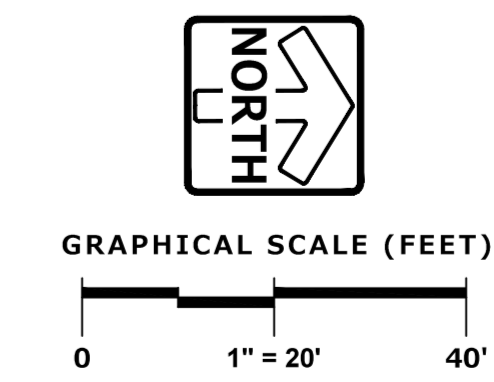
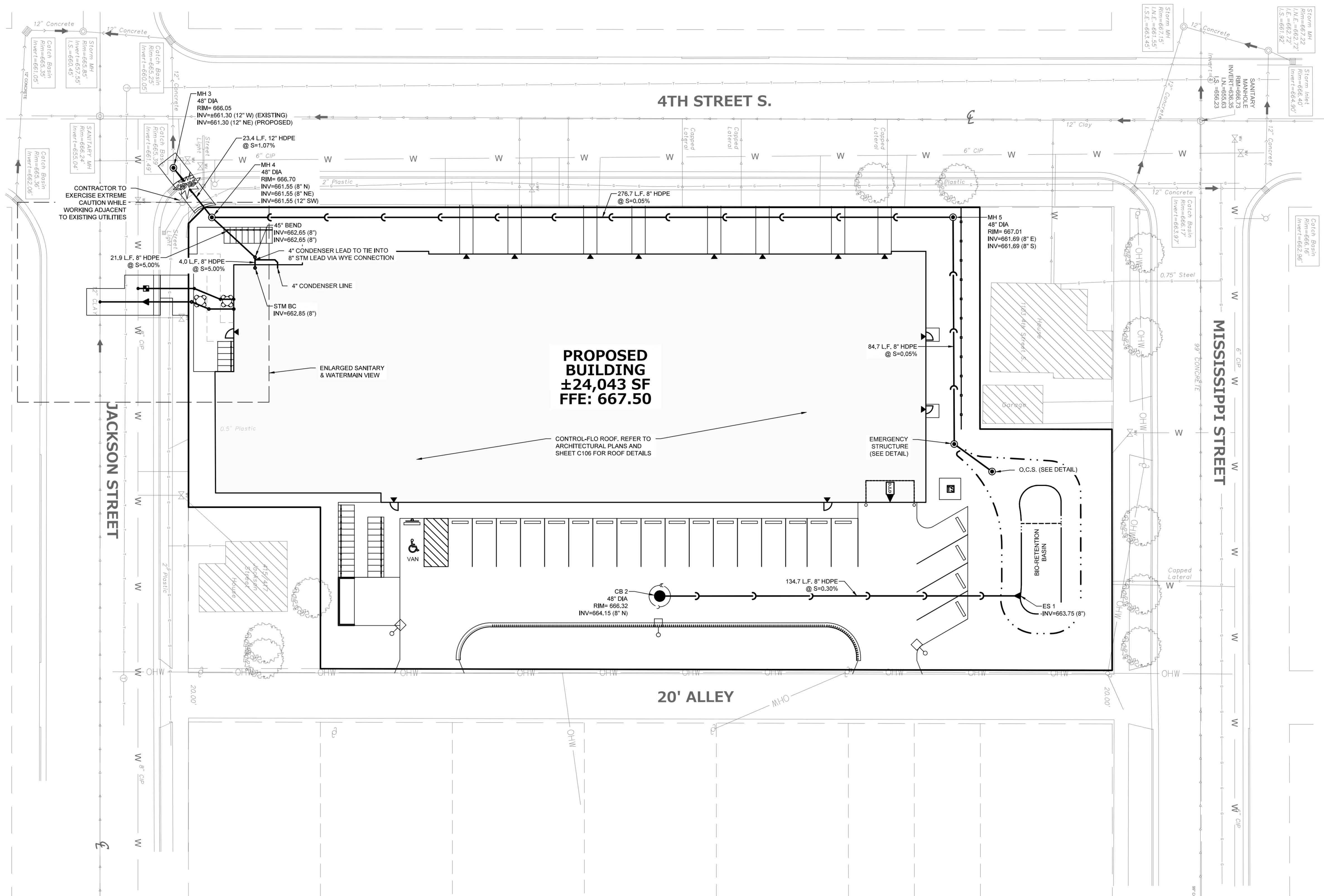
LEGEND	
	SANITARY SEWER MANHOLE
	STORM SEWER MANHOLE
	STORM SEWER CATCH BASIN (ROUND CASTING)
	STORM SEWER CATCH BASIN (RECTANGULAR CASTING)
	PRECAST CONCRETE FLARED END SECTION
	CLEANOUT
	VALVE BOX
	FIRE HYDRANT
	SANITARY SEWER
	FORCE MAIN
	STORM SEWER
	DRAIN TILE
	WATER MAIN
	FIRE PROTECTION
	UTILITY CROSSING
	ELECTRICAL CABLE
	GAS MAIN
	TELEPHONE LINE
	OVERHEAD VARES
	LIGHTING
	ELECTRICAL TRANSFORMER OR PEDESTAL

ALL PROPOSED CATCH BASINS SHALL HAVE DONUT DRAINTILE PER CONSTRUCTION DETAILS IN PLAN SET.

CONTRACTOR RESPONSIBILITY: SEE ADDITIONAL CONSTRUCTION NOTES LOCATED ON SHEET C107



CONTROLLED FLOW ROOF DRAINS	
DRAIN #	# OF NOTCHES
1	2
2	1
3	1
4	2
5	1
6	1



PINNACLE ENGINEERING GROUP
 ENGINEERING | NATURAL RESOURCES | SURVEYING
 PLAN | DESIGN | DELIVER
WISCONSIN OFFICE:
 20725 WATERTOWN RD
 BROOKFIELD, WI 53186
 (262) 754-8888
 CHICAGO MILWAUKEE NATIONWIDE
 PEG JOB #: 3278-00-WI

PROJECT:
 THE COLLECTIVE ON
 FOURTH
 403 JACKSON ST
 LA CROSSE, WI 54601

OWNER:
 CINNAIRE
 10 E. DOTY STREET
 SUITE 617
 MADISON, WI 53703

ARCHITECT:
 KORB + ASSOCIATES
 ARCHITECTS
 648 N. PLANKINTON AVE
 SUITE 240
 MILWAUKEE, WI 53203

CIVIL ENGINEER:
 PINNACLE ENGINEERING
 GROUP
 20725 WATERTOWN ROAD,
 SUITE 100
 BROOKFIELD, WI 53186

STRUCTURAL ENGINEER:
 SPIRE ENGINEERING
 305 N. PLANKINTON AVENUE
 SUITE 101
 MILWAUKEE, WI 53203

DATE	REVISION

DESIGN REVIEW - NOT FOR CONSTRUCTION

PROJ. NO.	23017
SCALE	1" = 20'
PHASE	CONSTRUCTION DOCUMENTS
DATE	12/01/2023

UTILITY PLAN

C104

Copyright © Korb + Associates Architects Inc.