

RADIUS POINT TABLE		
POINT	COORDINATES	RADIUS
CC1	Y=127770.240 X=445508.960	18.0'
CC2	Y=127770.077 X=445576.945	18.0'
CC3	Y=127694.123 X=445508.314	18.0'
CC4	Y=127693.846 X=445576.236	18.0'

LEGEND

- DIRECTION OF SLOPE (TYP)
- EXPANSION JOINT
- SAWCUT REQ'D (SAWCUTS TO BE AT NEAREST EXISTING JOINT)
- R1-1 (STOP SIGN) R1-1 30"x30"
- DETECTABLE WARNING FIELD
- EXISTING ELEVATION
- PROPOSED STORM PIPE
- PROPOSED INLET/ADJUSTED INLET
- STATION, OFFSET
- 10:1 MAX FLARE. 2" MIN. CURB HEIGHT
- GUTTER CROSS SLOPE AT CURB RAMP 4%
CURB HEAD OPENING SLOPE 1.5%
- REPLACE EXISTING CASTING WITH WISDOT
TYPE-S CASTING. ADJUST INLET CASTING REQ'D
- CURB RAMP TYPE AS PER WISDOT SDD 8d5

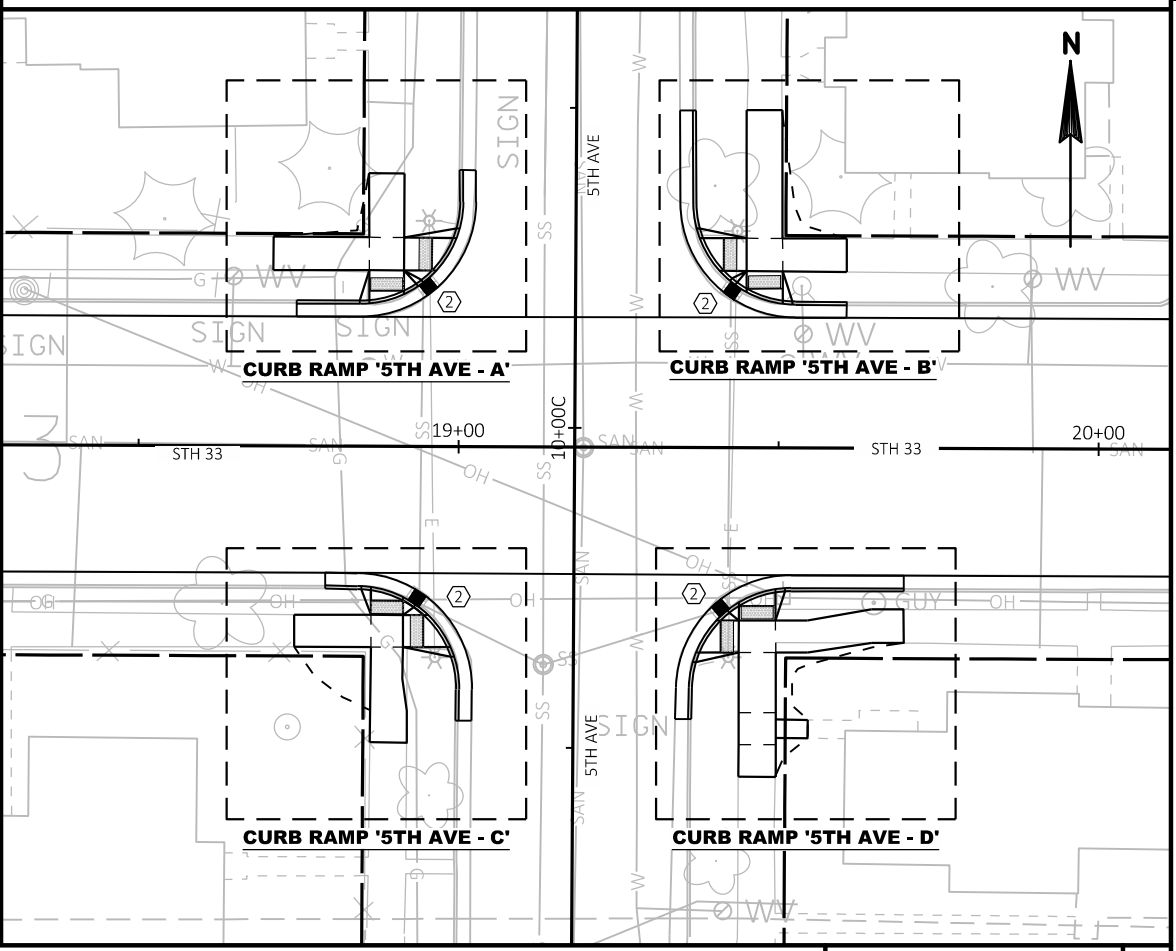
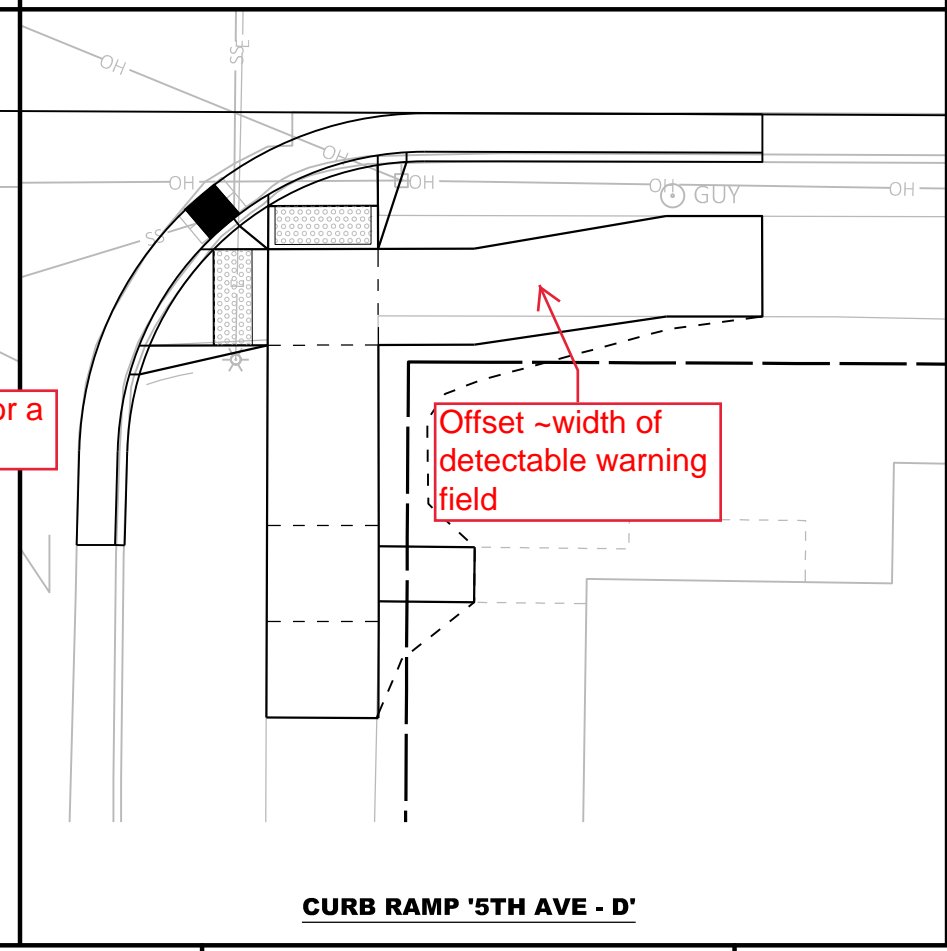
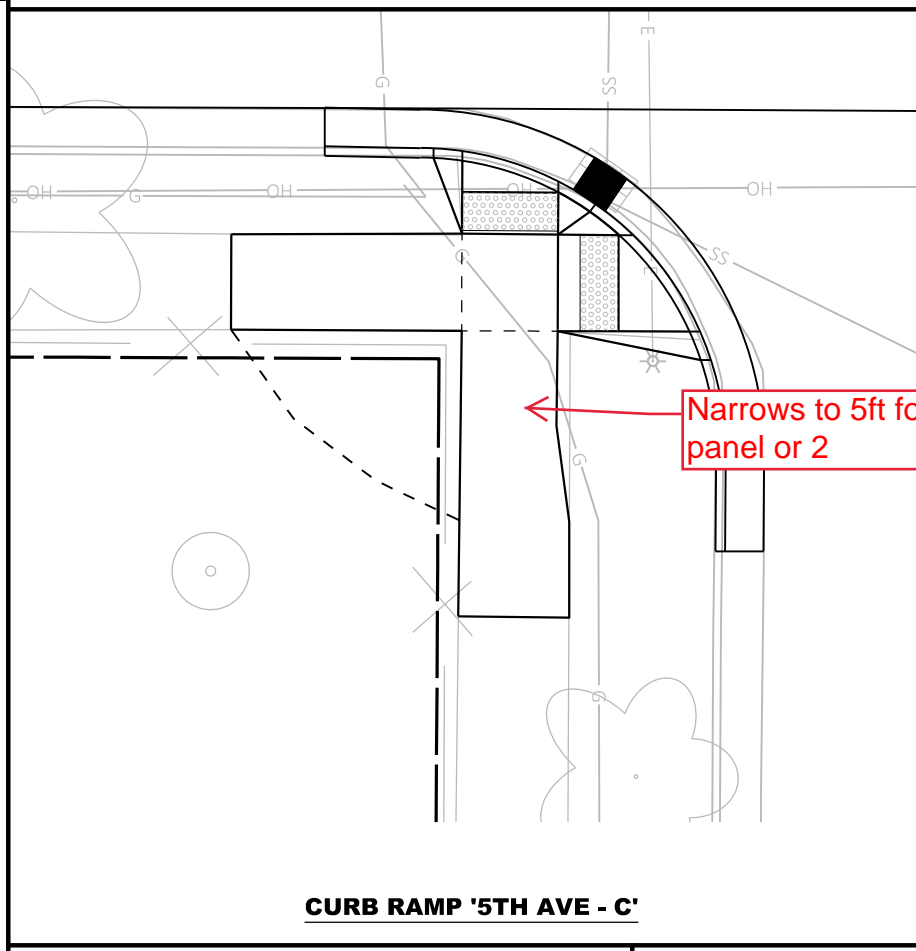
5

5

CURB RAMP '5TH AVE - A'

CURB RAMP '5TH AVE - B'

Type S inlet Covers



Narrows to 5ft for a panel or 2

Offset ~width of detectable warning field

CURB RAMP '5TH AVE - C'

CURB RAMP '5TH AVE - D'

CURB RAMP '5TH AVE - C'

CURB RAMP '5TH AVE - D'