



FRONT FACADE ON KANE STREET

VETERANS HOUSING OF LACROSSE
Veterans Assistance Foundation, Inc.
07/19/16



CERMAK RHOADES ARCHITECTS

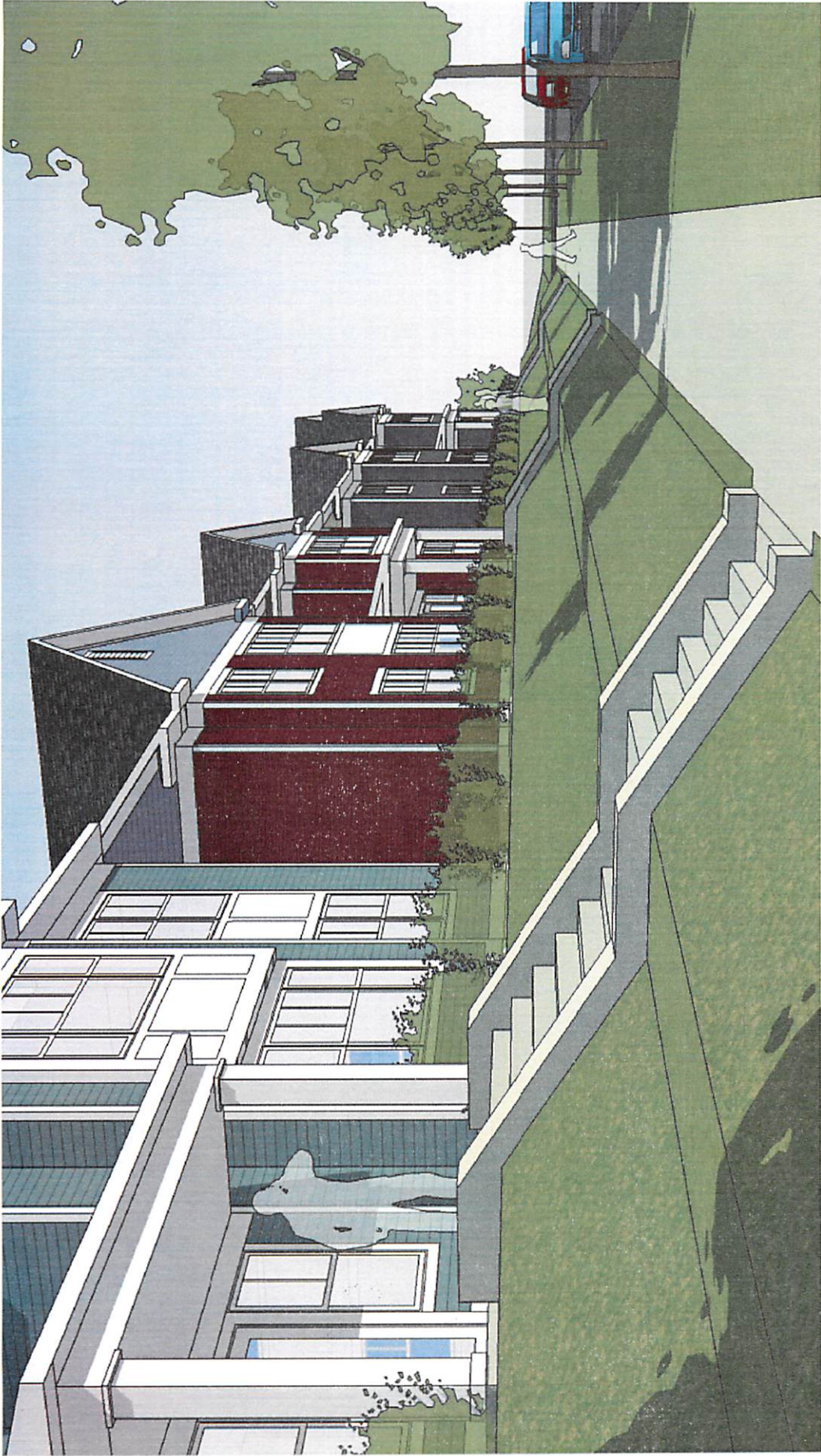


BACK FACADE SEEN FROM CHARLES STREET

VETERANS HOUSING OF LACROSSE
Veterans Assistance Foundation, Inc.
07/19/16



CERMAK RHOADES ARCHITECTS



FRONT FACADE AND SIDEWALK ON KANE STREET

VETERANS HOUSING OF LACROSSE
Veterans Assistance Foundation, Inc.
07/19/16



CERMAK RHOADES ARCHITECTS



PARKING AND LANDSCAPING IN BACK

VETERANS HOUSING OF LACROSSE
Veterans Assistance Foundation, Inc.
07/19/14



CERMAK RHOADES ARCHITECTS

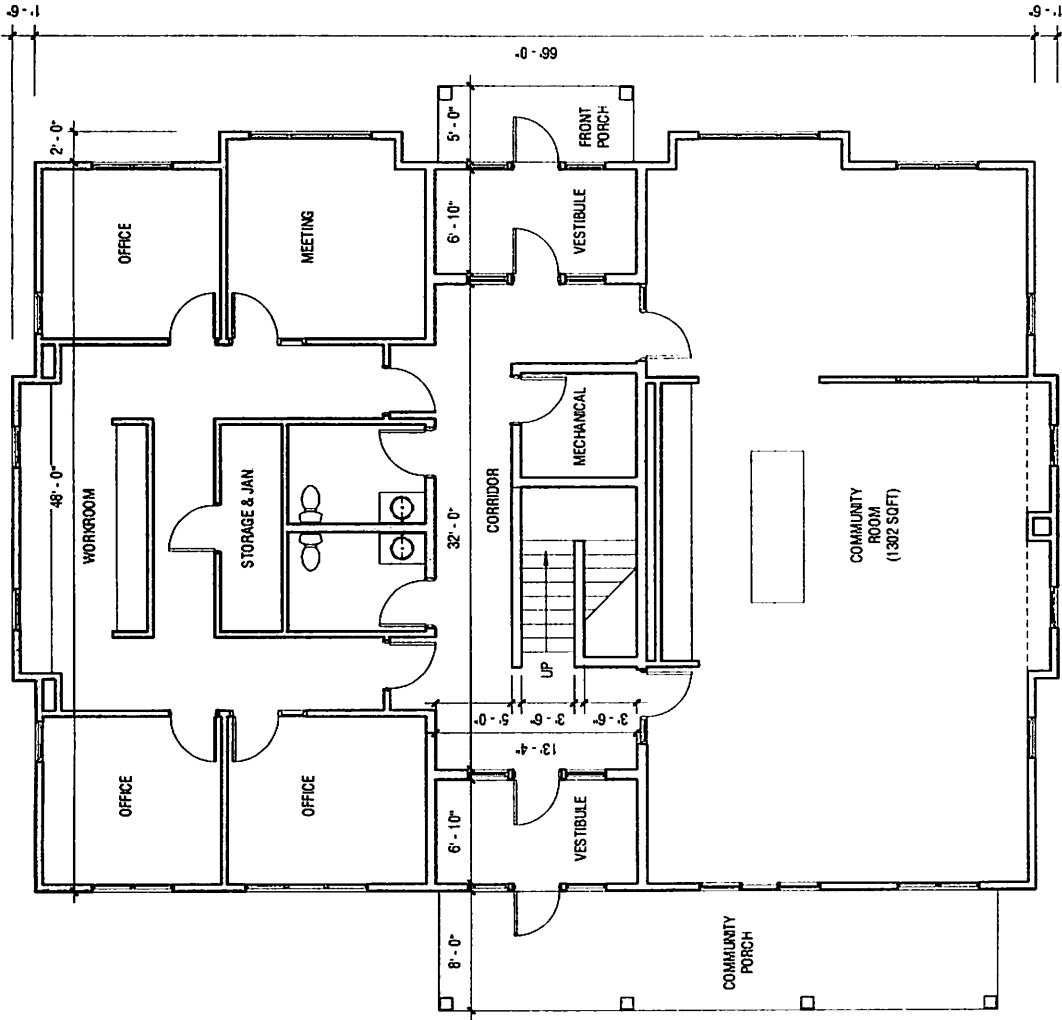


AERIAL SITE OVERVIEW

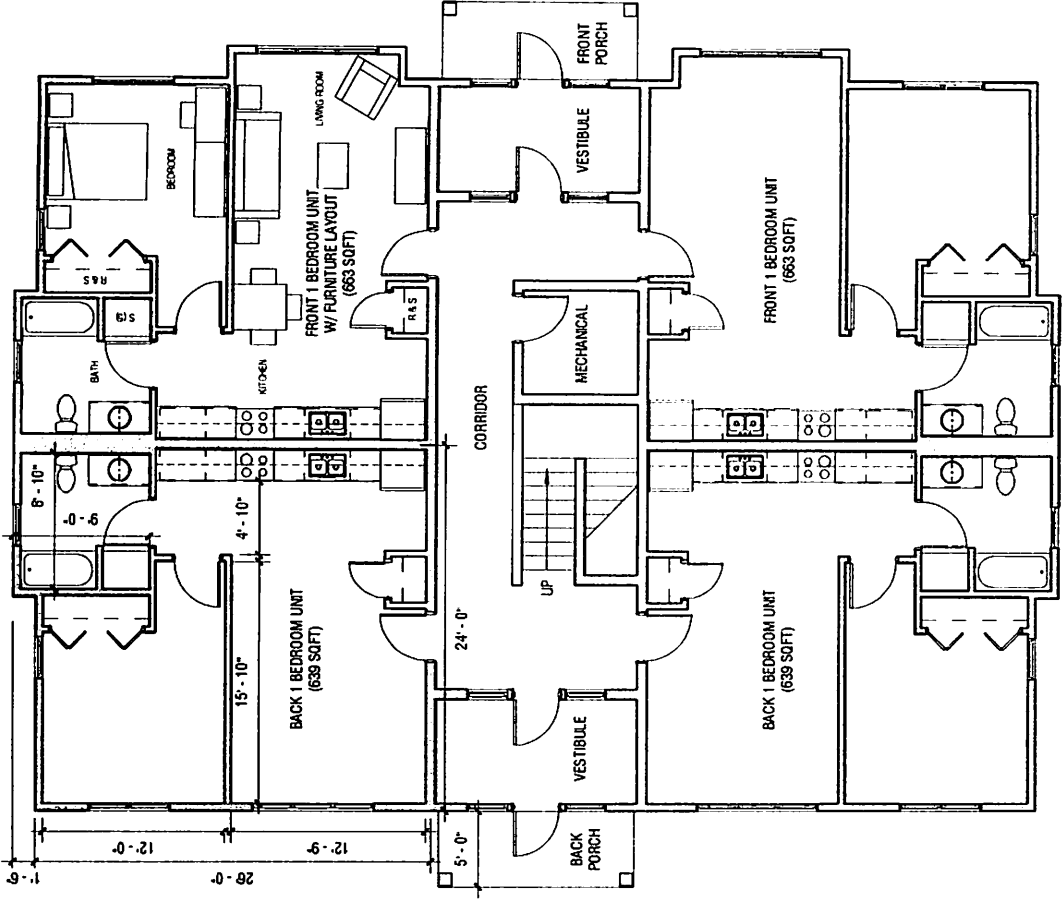
VETERANS HOUSING OF LACROSSE
Veterans Assistance Foundation, Inc.
07/19/16



CERMAK RHOADES ARCHITECTS



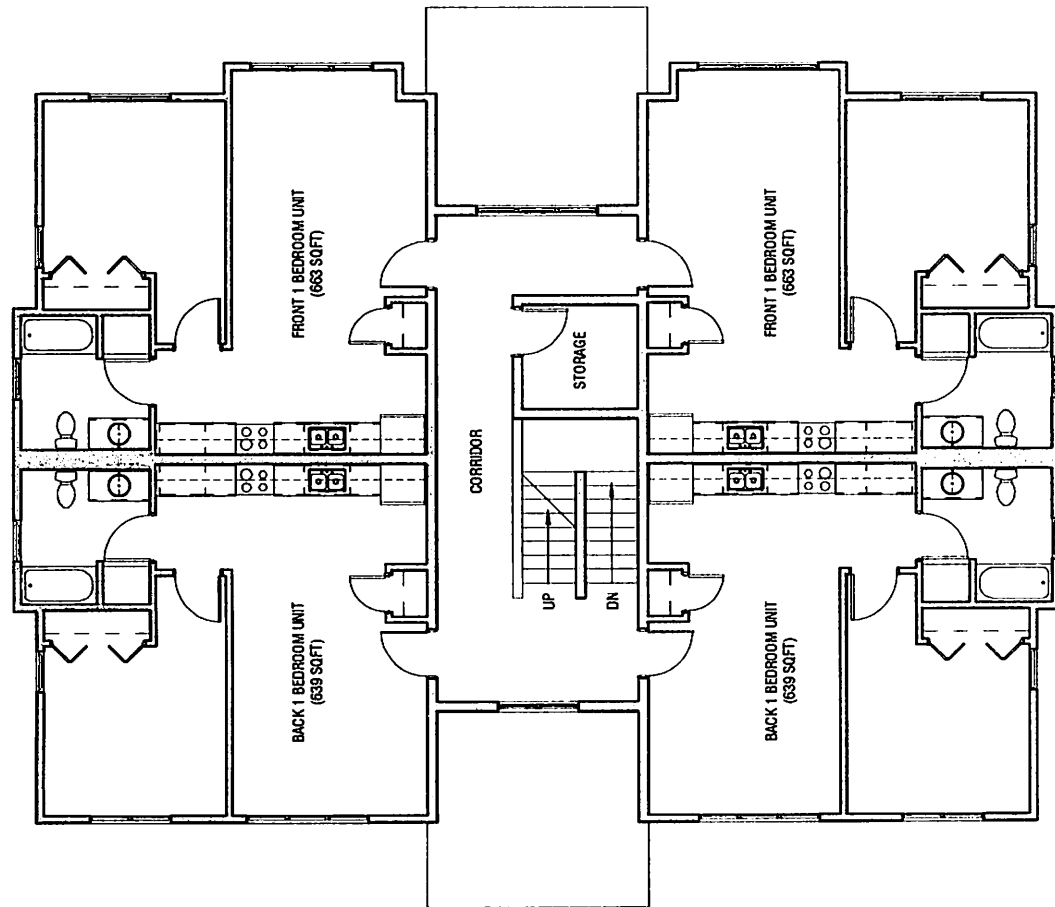
1 FIRST FLOOR PLAN - COMMUNITY BUILDING
1/8" = 1'-0"



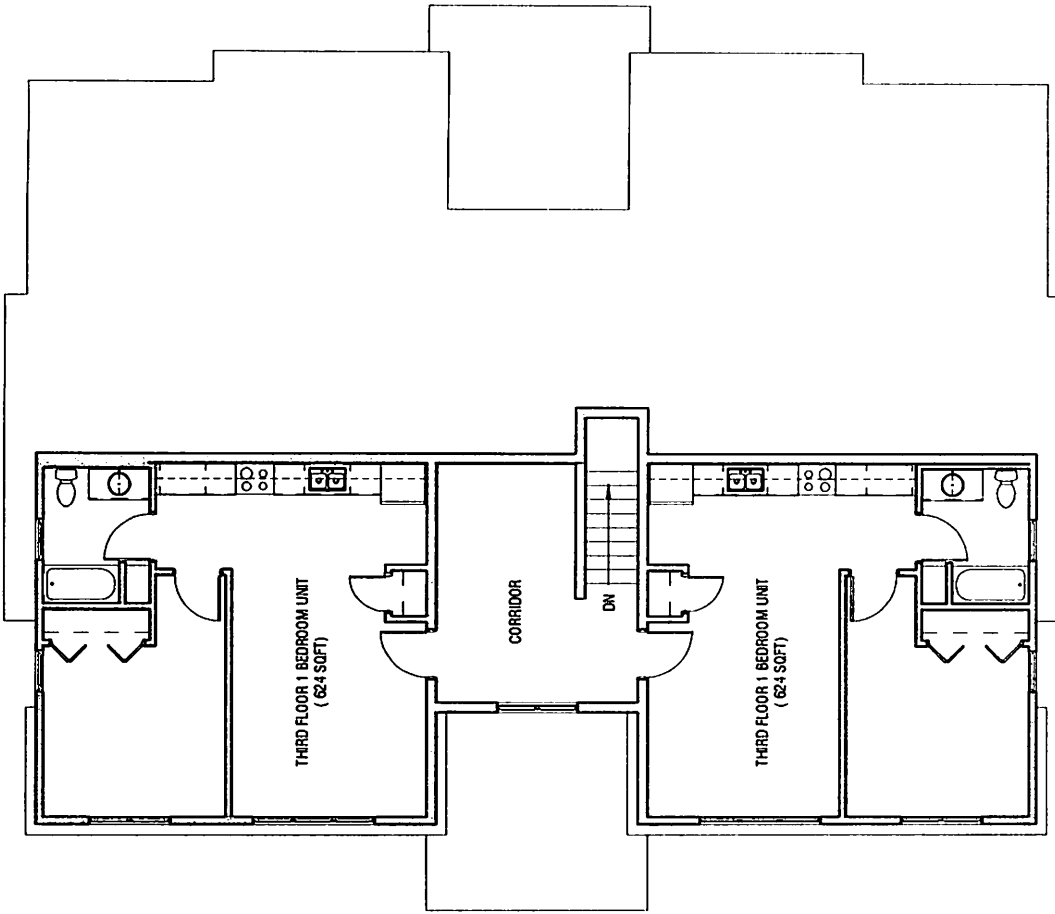
2 FIRST FLOOR PLAN - TYPICAL BUILDING (3 THUS)
1/8" = 1'-0"

VETERANS HOUSING OF LACROSSE
Veterans Assistance Foundation, Inc.
07/19/16

CERMAK RHOADES ARCHITECTS



1 SECOND FLOOR PLAN - TYPICAL ALL 4 BUILDINGS
1/8" = 1'-0"



2 THIRD FLOOR PLAN - TYPICAL ALL 4 BUILDINGS
1/8" = 1'-0"