

**CONSTRUCTION NOTE:**  
 BURY CABLE AT A MINIMUM OF 30" DEPTH  
 UNLESS OTHERWISE NOTED ON PRINTS.

**CONSTRUCTION NOTE:**  
 CHARTER COMMUNICATIONS WILL PLACE  
 PROPOSED CABLES IN CORRIDOR AS CLOSE TO  
 THE BACK OF RIGHT-OF-WAY AS POSSIBLE,  
 PENDING LOCATES.

**LEGEND**

- TB : TREE BONE (DIRECTIONAL BORE)
- RB : ROAD BONE (DIRECTIONAL BORE)
- T : TRENCH
- HD : HAND DIG
- P : FLOW

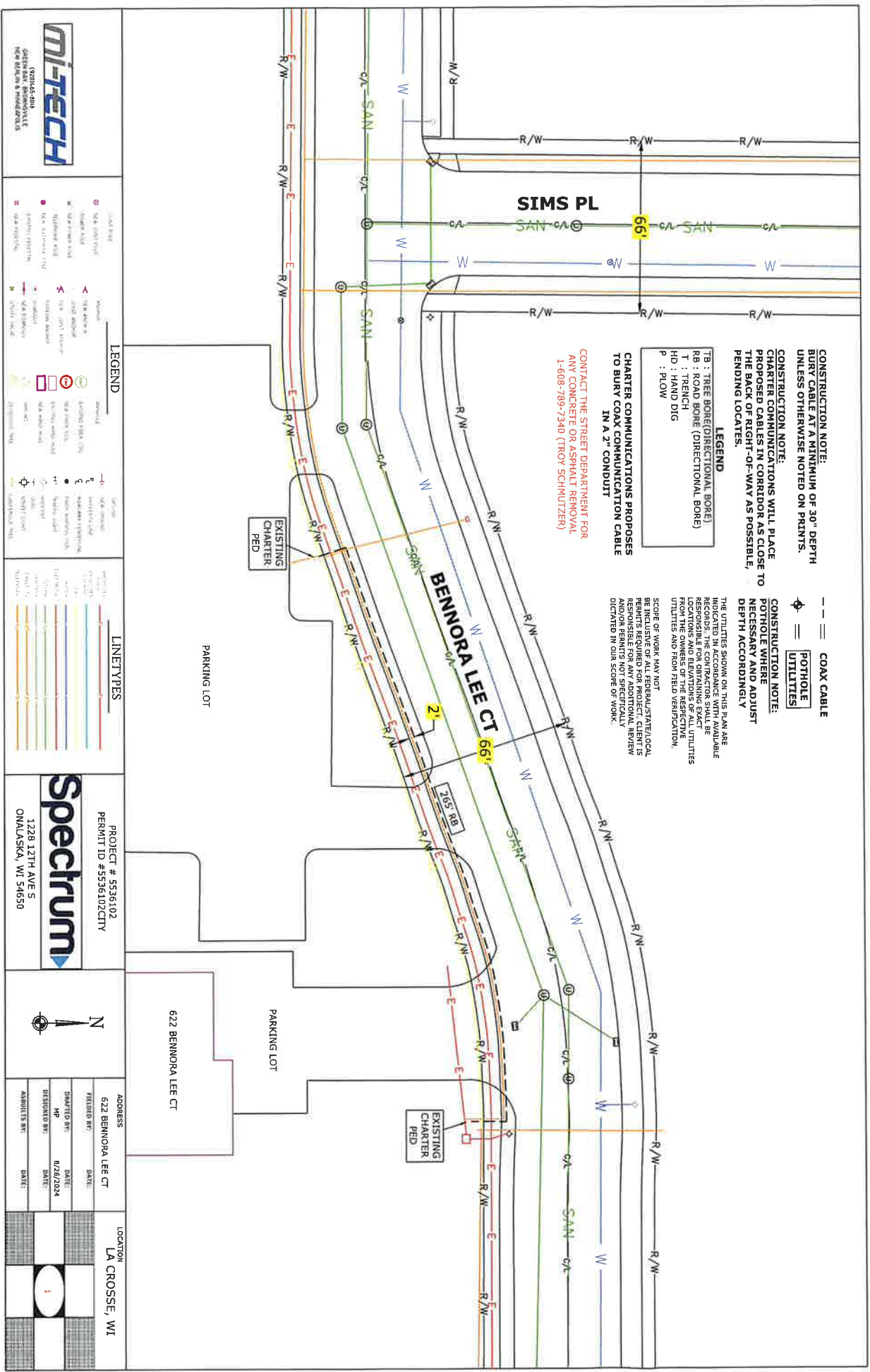
**CHARTER COMMUNICATIONS PROPOSES  
 TO BURY COAX COMMUNICATION CABLE  
 IN A 2" CONDUIT**

**CONTACT THE STREET DEPARTMENT FOR  
 ANY CONCRETE OR ASPHALT REMOVAL  
 1-608-789-7340 (TROT SCHMIDTZER)**

--- COAX CABLE  
 [Symbol] POTHOLE  
 [Symbol] UTILITIES

**CONSTRUCTION NOTE:**  
 POT HOLE WHERE  
 NECESSARY AND ADJUST  
 DEPTH ACCORDINGLY

THE UTILITIES SHOWN ON THIS PLAN ARE  
 INDICATED IN ACCORDANCE WITH AVAILABLE  
 RECORDS. THE LOCATION OF UTILITIES  
 LOCATIONS AND ELEVATIONS OF ALL UTILITIES  
 FROM THE OWNERS OF THE RESPECTIVE  
 UTILITIES AND FROM FIELD VERIFICATION.  
 SCOPE OF WORK MAY NOT  
 BE INCLUSIVE OF ALL FEDERAL/STATE/LOCAL  
 PERMITS REQUIRED FOR PROJECT. CLIENTS  
 SHALL OBTAIN ALL NECESSARY FEDERAL, STATE  
 AND/OR PERMITS NOT SPECIFICALLY  
 DICTATED IN OUR SCOPE OF WORK.



**mi-TECH**  
 (CORPORATION)  
 GREEN HALL BIRMINGHAM, AL  
 NEW BRICKS & BRICKWORKS

**LEGEND**

Symbol	Description
[Symbol]	1. SANITARY
[Symbol]	2. WATER
[Symbol]	3. GAS
[Symbol]	4. TELEPHONE
[Symbol]	5. CABLE TV
[Symbol]	6. FIBER OPTIC
[Symbol]	7. POWER
[Symbol]	8. LIGHTNING
[Symbol]	9. UNKNOWN
[Symbol]	10. EXISTING
[Symbol]	11. PROPOSED
[Symbol]	12. TRENCH
[Symbol]	13. HAND DIG
[Symbol]	14. FLOW
[Symbol]	15. TREE BONE
[Symbol]	16. ROAD BONE
[Symbol]	17. TRENCH
[Symbol]	18. HAND DIG
[Symbol]	19. FLOW

**LINE TYPES**

Line Style	Description
[Solid Line]	1. SANITARY
[Dashed Line]	2. WATER
[Dotted Line]	3. GAS
[Dash-dot Line]	4. TELEPHONE
[Long-dash Line]	5. CABLE TV
[Short-dash Line]	6. FIBER OPTIC
[Thick Solid Line]	7. POWER
[Thin Solid Line]	8. LIGHTNING
[Thin Dotted Line]	9. UNKNOWN
[Thin Dashed Line]	10. EXISTING
[Thin Dotted Line]	11. PROPOSED
[Thin Dash-dot Line]	12. TRENCH
[Thin Long-dash Line]	13. HAND DIG
[Thin Short-dash Line]	14. FLOW
[Thin Thick Solid Line]	15. TREE BONE
[Thin Thin Solid Line]	16. ROAD BONE
[Thin Thin Dotted Line]	17. TRENCH
[Thin Thin Dashed Line]	18. HAND DIG
[Thin Thin Dash-dot Line]	19. FLOW

**Spectrum**  
 PROJECT # 5536102  
 PERMIT ID #5536102CITY  
 1228 13TH AVE S  
 OMAHA, NE 68108

**ADDRESS**  
 622 BENNORA LEE CT  
 OMAHA, NE 68108

FILED BY	DATE
DRAWN BY	DATE
MP	8/26/2024
DESIGNED BY	DATE
ASBUILT BY	DATE

**LOCATION**  
 LA CROSSE, WI