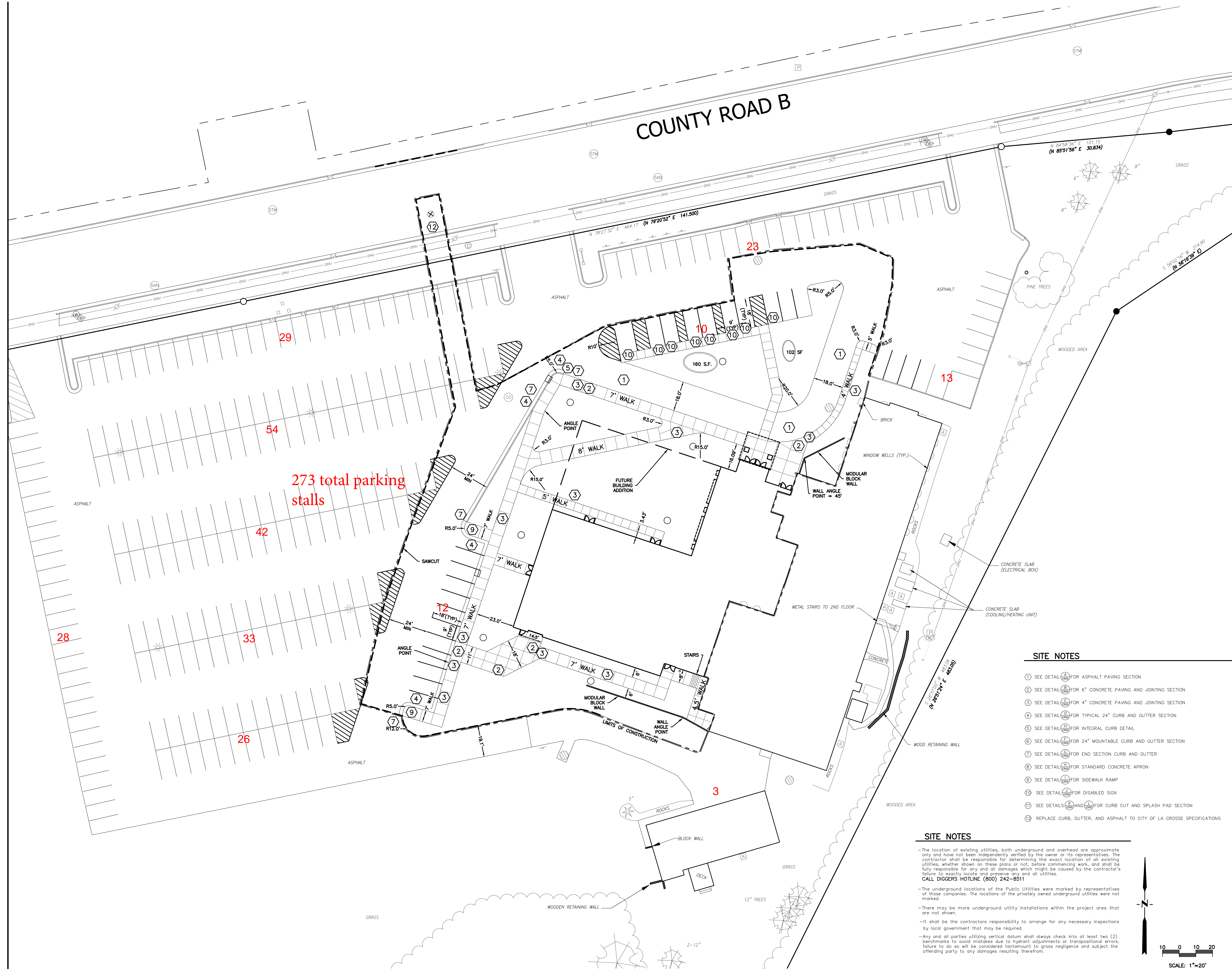


No.	Description	Date



SITE NOTES

- ① SEE DETAIL (A) FOR ASPHALT PAVING SECTION
- ② SEE DETAIL (B) FOR 6" CONCRETE PAVING AND JOINTING SECTION
- ③ SEE DETAIL (C) FOR 4" CONCRETE PAVING AND JOINTING SECTION
- ④ SEE DETAIL (D) FOR TYPICAL 24" CURB AND GUTTER SECTION
- ⑤ SEE DETAIL (E) FOR INTEGRAL CURB DETAIL
- ⑥ SEE DETAIL (F) FOR 24" MOUNTABLE CURB AND GUTTER SECTION
- ⑦ SEE DETAIL (G) FOR END SECTION CURB AND GUTTER
- ⑧ SEE DETAIL (H) FOR STANDARD CONCRETE APRON
- ⑨ SEE DETAIL (I) FOR SIDEWALK RAMP
- ⑩ SEE DETAIL (J) FOR DISABLED SIGN
- ⑪ SEE DETAILS (K) AND (L) FOR CURB CUT AND SPLASH PAD SECTION
- ⑫ REPLACE CURB, GUTTER, AND ASPHALT TO CITY OF LA CROSSE SPECIFICATIONS

SITE NOTES

- The location of existing utilities, both underground and overhead are approximate only and have not been independently verified by the owner or its representatives. The contractor shall be responsible for determining the exact location of all existing utilities, whether shown on these plans or not, before commencing work, and shall be fully responsible for any and all damages which might be caused by the contractor's failure to exactly locate and preserve any and all utilities. CALL DIGGERS HOTLINE (800) 242-8511
- The underground locations of the Public Utilities were marked by representatives of those companies. The locations of the privately owned underground utilities were not marked.
- There may be more underground utility installations within the project area that are not shown.
- It shall be the contractors responsibility to arrange for any necessary inspections by local government that may be required.
- Any and all parties utilizing vertical datum shall always check into at least two (2) benchmarks to avoid mistakes due to hydrant adjustments or transpositional errors. Failure to do so will be considered tantamount to gross negligence and subject the offending party to any damages resulting therefrom.

