

**CITY OF LA CROSSE, WISCONSIN
CITY PLAN COMMISSION
REPORT
June 29, 2020**

➤ **AGENDA ITEM – 20-0811 (Andrea Schnick)**

Resolution Creating Tax Incremental District No. 20, Approving Its Project Plan and Establishing Its Boundaries.

➤ **ROUTING:** F&P 7/2/2020

➤ **BACKGROUND INFORMATION:**

Much of this area of Bridgeview Plaza has been vacant since the closure of Shopko in January 2019. The creation of a Tax Increment Financing District can assist with redevelopment of the site to increase the property tax base and assist with redevelopment in this area.

GENERAL LOCATION:

South of Exit 3, North side of the city. Council District #1, Logan Northside Neighborhood Association.

➤ **RECOMMENDATION OF OTHER BOARDS AND COMMISSIONS:**

Approved by the Economic Development Commission 6/25/2020. To be revised by the Joint Review Board at 2:00pm on 6/29/2020.

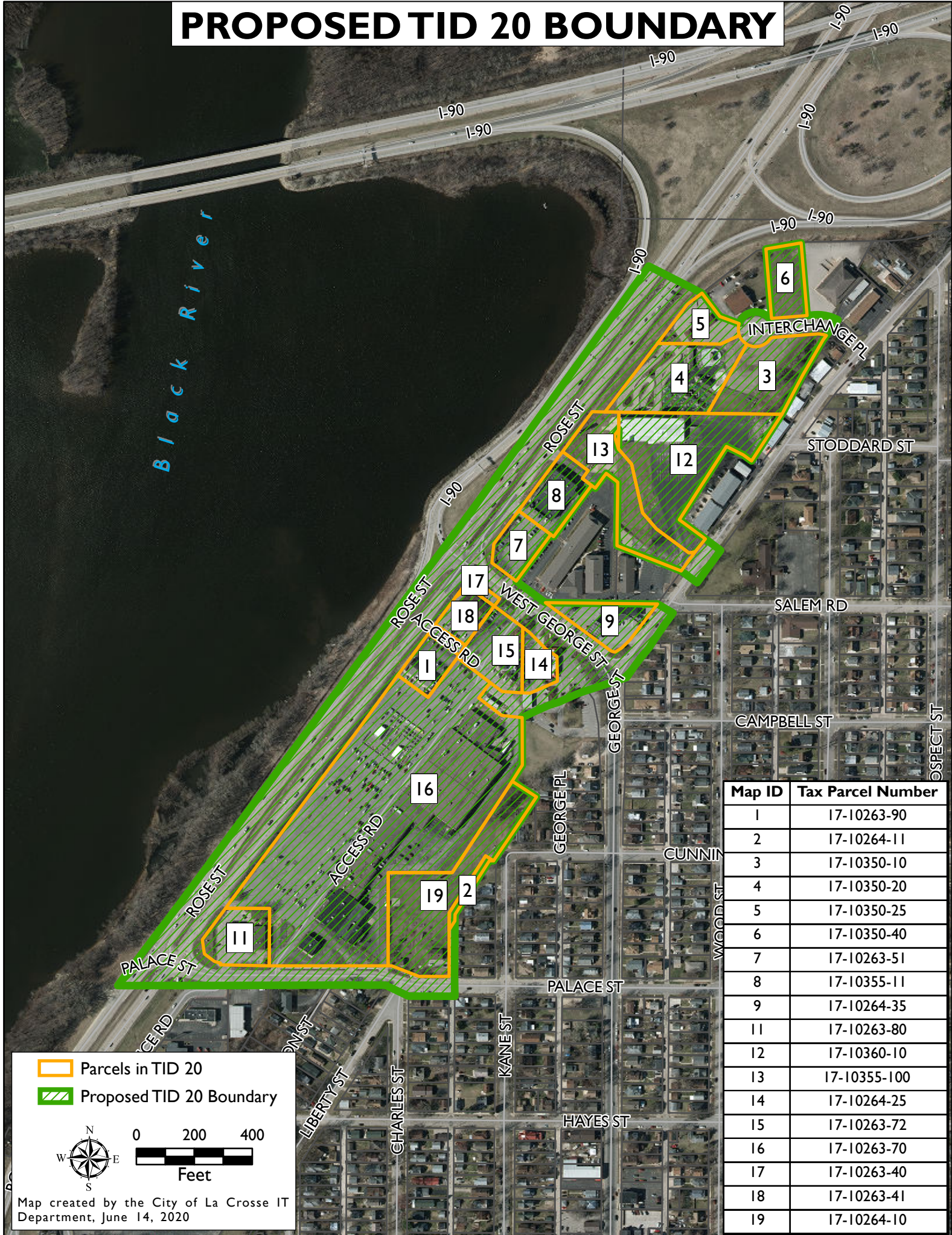
➤ **CONSISTENCY WITH ADOPTED COMPREHENSIVE PLAN:**

The Comprehensive Plan promotes the prudent use of Tax Incremental Financing Districts.

➤ **PLANNING RECOMMENDATION:**

Planning staff recommends approval.

PROPOSED TID 20 BOUNDARY



Map ID	Tax Parcel Number
1	17-10263-90
2	17-10264-11
3	17-10350-10
4	17-10350-20
5	17-10350-25
6	17-10350-40
7	17-10263-51
8	17-10355-11
9	17-10264-35
11	17-10263-80
12	17-10360-10
13	17-10355-100
14	17-10264-25
15	17-10263-72
16	17-10263-70
17	17-10263-40
18	17-10263-41
19	17-10264-10

Map created by the City of La Crosse IT Department, June 14, 2020