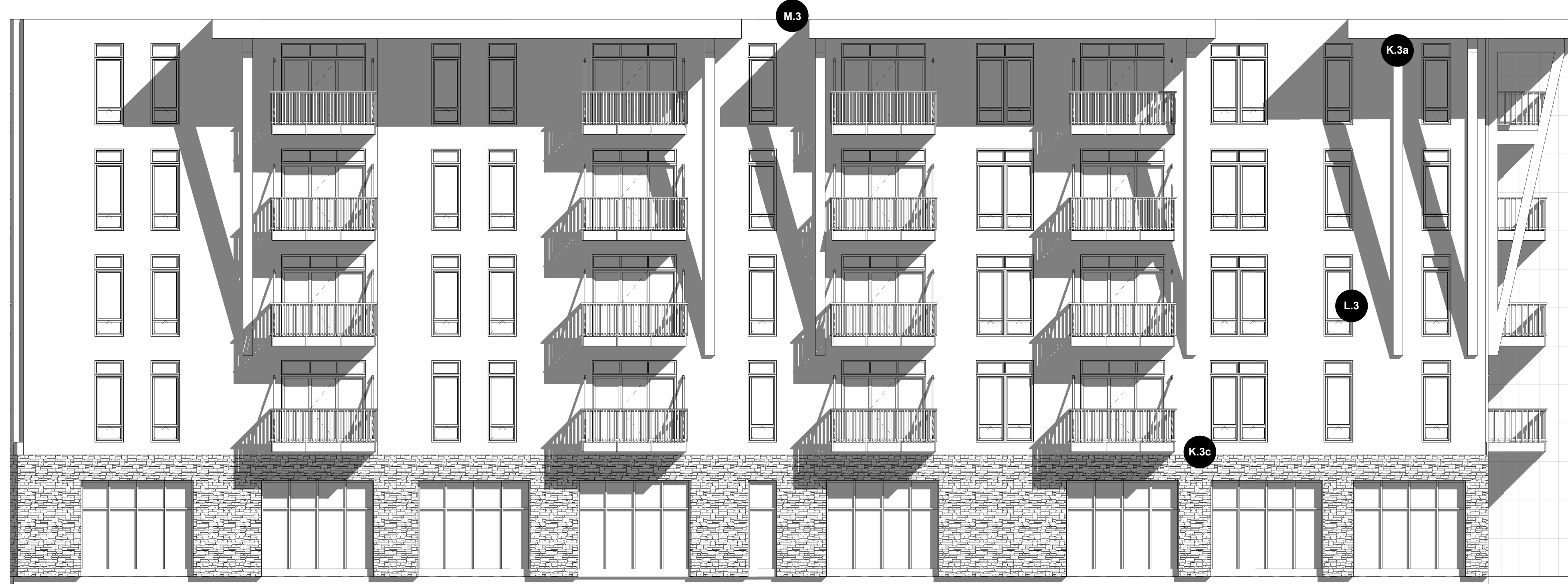




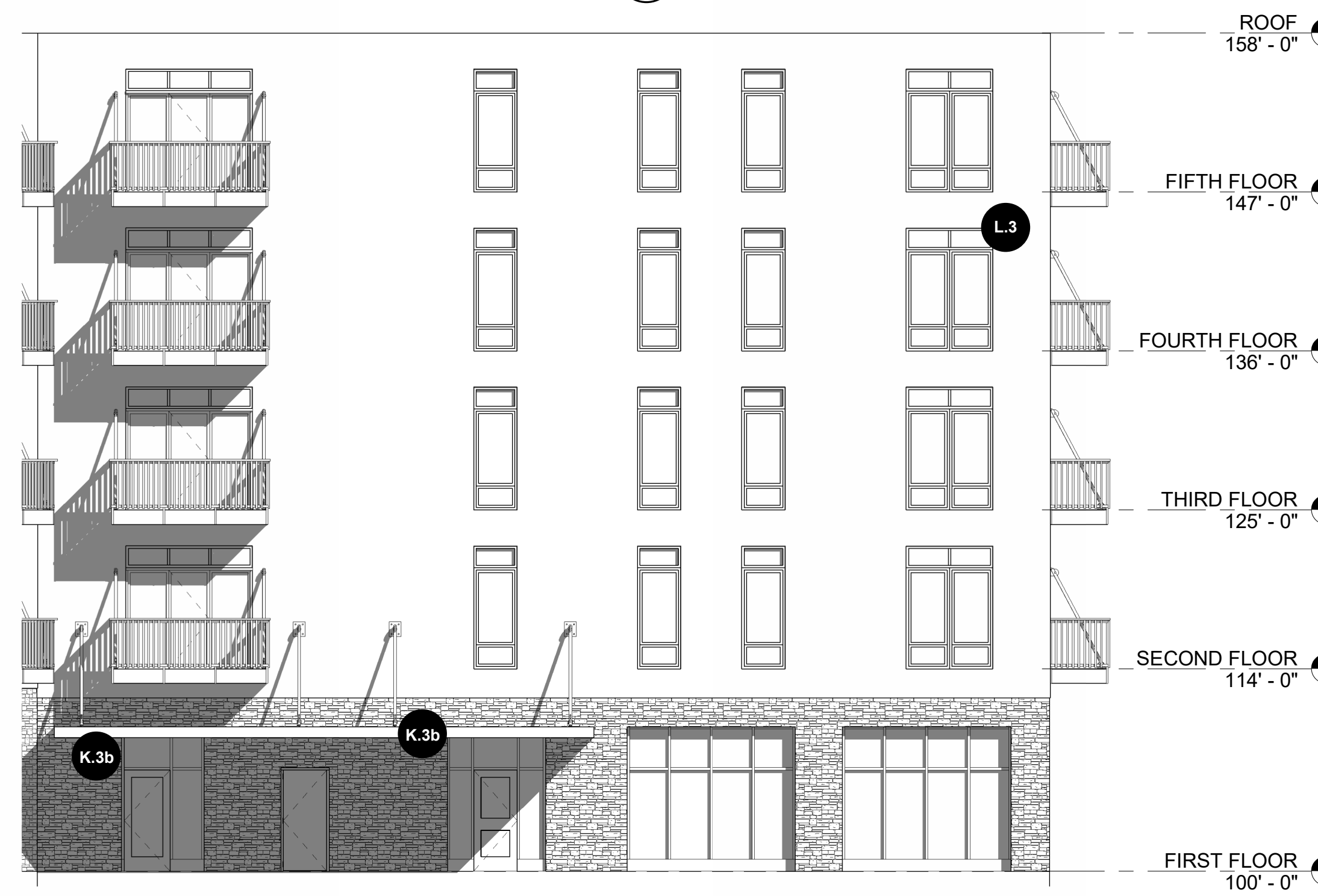
2 WEST BUILDING - EAST ELEVATION B1
1/8" = 1'-0"
TOTAL ELEVATION AREA = 3404
MINIMUM FENESTRATION REQUIRED = 3404(2) = 6810 SF
FENESTRATION SHOWN = 1650



1 WEST BUILDING - EAST ELEVATION A1
1/8" = 1'-0"
TOTAL ELEVATION AREA = 3404
MINIMUM FENESTRATION REQUIRED = 3404(2) = 6810 SF
FENESTRATION SHOWN = 1650



6 WEST BUILDING - WEST ELEVATION B1
1/8" = 1'-0"



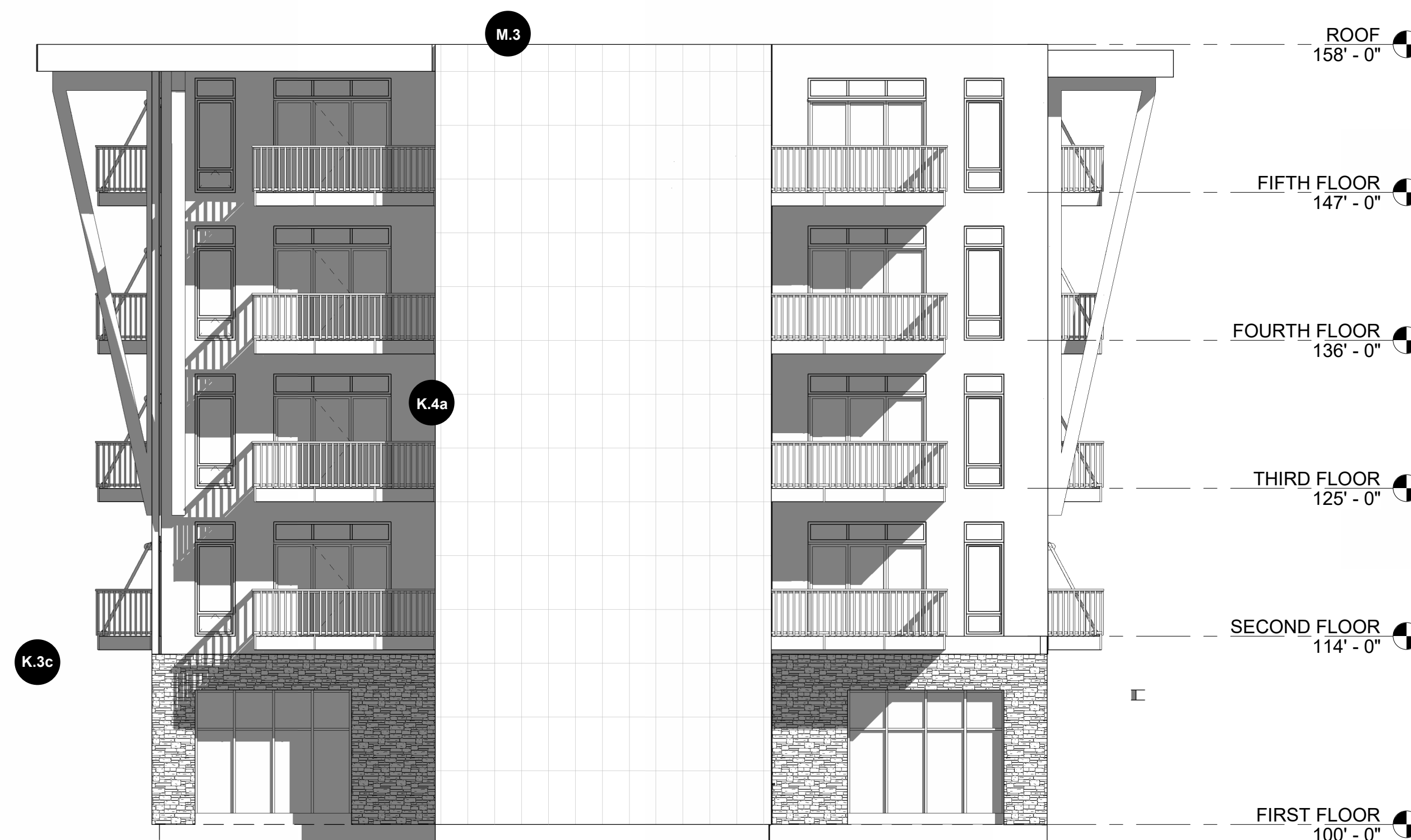
5 WEST BUILDING - WEST ELEVATION A1
1/8" = 1'-0"

EXTERIOR ELEVATION DESIGN ELEMENTS

- K.3a, M.2 - DISTINCT ROOF SHAPES PROVIDE VARIATION IN BUILDING FORM
- K.4a - FACADE ARTICULATED WITH PROJECTIONS
- L.3, N.3 - TRIM SURROUNDING ALL OPENINGS
- K.3b - EMPHASIS OF BUILDING ENTRY THROUGH RECESSED FORM
- K.3c - VARIATION OF MATERIAL AND COLOR TO BREAK UP WALL SURFACE
- K.4a - FACADE ARTICULATED WITH PROJECTIONS
- M.3 - FLAT ROOFS WITH INCORPORATED PARAPET WALL ON ALL SIDES
- N.6b NUETRAL PRIMARY SIDING AND CONTRASTING ACCENT SIDING AND TRIM



3 WEST BUILDING - NORTH ELEVATION 1
1/8" = 1'-0"



4 WEST BUILDING - SOUTH ELEV
1/8" = 1'-0"

