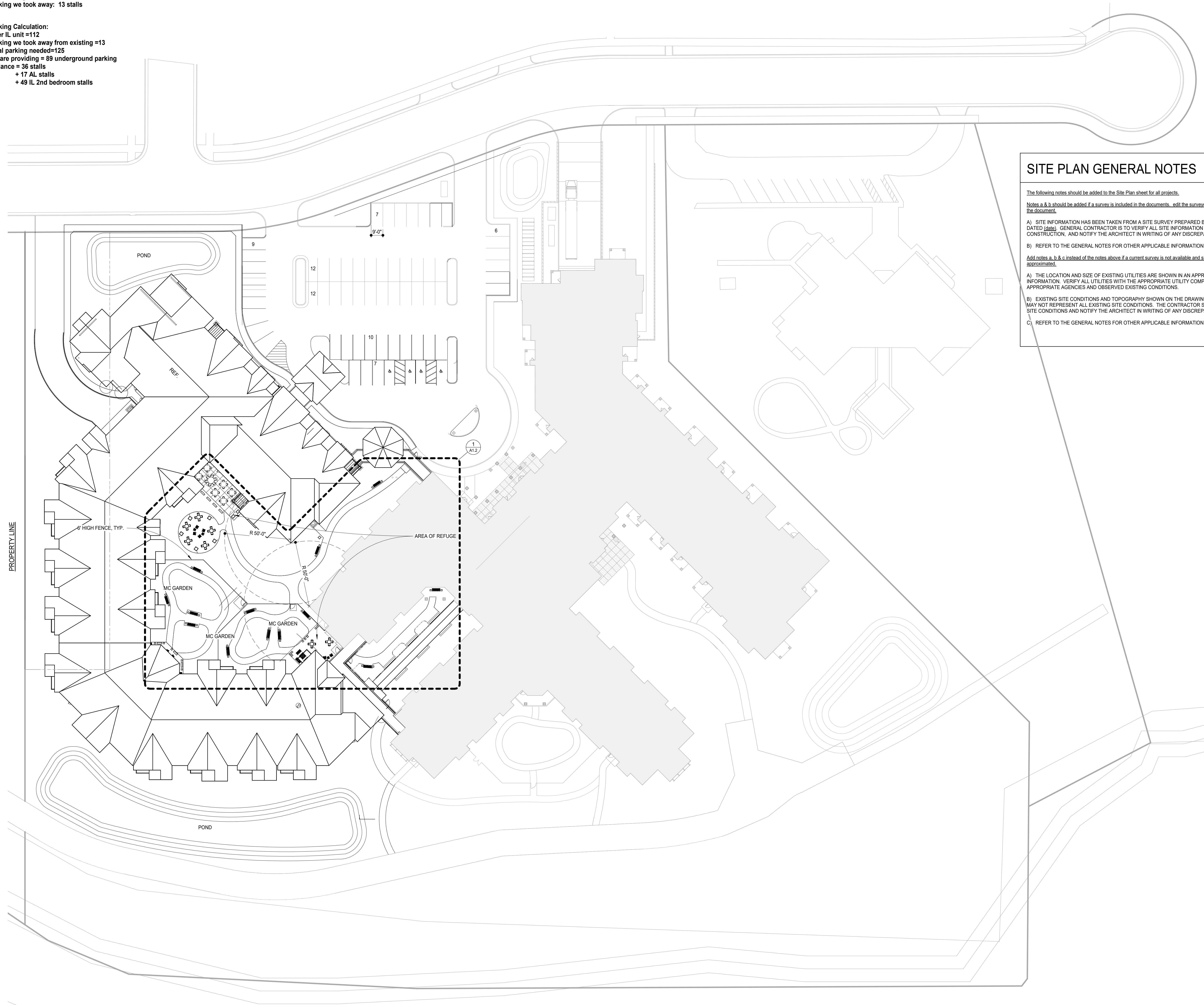


Existing Parking Lot: 76 stalls
 New Parking Lot: 63 stalls
 Parking we took away: 13 stalls

Parking Calculation:
 1 per IL unit = 112
 Parking we took away from existing = 13
 Total parking needed = 125
 We are providing = 89 underground parking
 Variance = 36 stalls
 + 17 AL stalls
 + 49 IL 2nd bedroom stalls



SITE PLAN GENERAL NOTES

The following notes should be added to the Site Plan sheet for all projects.

Notes a & b should be added if a survey is included in the documents. edit the surveyor information and the date of the document.

A) SITE INFORMATION HAS BEEN TAKEN FROM A SITE SURVEY PREPARED BY (surveyor and address) DATED (date). GENERAL CONTRACTOR IS TO VERIFY ALL SITE INFORMATION BEFORE STARTING CONSTRUCTION, AND NOTIFY THE ARCHITECT IN WRITING OF ANY DISCREPANCIES.

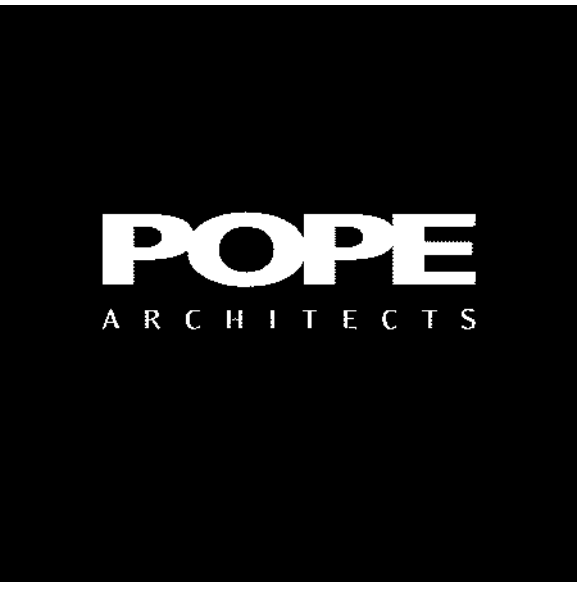
B) REFER TO THE GENERAL NOTES FOR OTHER APPLICABLE INFORMATION.

Add notes a, b & c instead of the notes above if a current survey is not available and site information has been approximated.

A) THE LOCATION AND SIZE OF EXISTING UTILITIES ARE SHOWN IN AN APPROXIMATE LOCATION FOR INFORMATION. VERIFY ALL UTILITIES WITH THE APPROPRIATE UTILITY COMPANIES, OTHER APPROPRIATE AGENCIES AND OBSERVED EXISTING CONDITIONS.

B) EXISTING SITE CONDITIONS AND TOPOGRAPHY SHOWN ON THE DRAWINGS ARE APPROXIMATE AND MAY NOT REPRESENT ALL EXISTING SITE CONDITIONS. THE CONTRACTOR SHALL VERIFY EXISTING SITE CONDITIONS AND NOTIFY THE ARCHITECT IN WRITING OF ANY DISCREPANCIES WITH DRAWINGS.

C) REFER TO THE GENERAL NOTES FOR OTHER APPLICABLE INFORMATION.

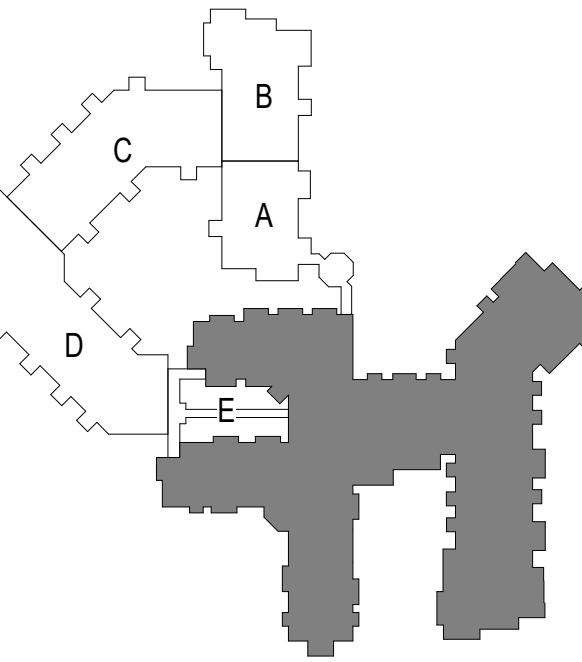


POPE ASSOCIATES, INC.
 1295 BANDANA BLVD N, SUITE 200
 ST. PAUL, MN 55108-2735
 (651) 642-9200 | FAX (651) 642-1101
 www.popearch.com



**EAGLE CREST
 SOUTH ADDITION
 PHASE 2
 LA CROSSE, WI**

**CITY SUBMISSION
 CUP & PDD
 3/2/2018**



SITE PLAN

Issues and Revisions:

No.	Description	Date

Commission No: 12728-17031
 Drawn by: MEJ
 Checked by: TP

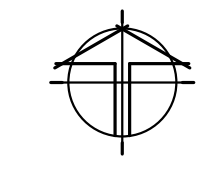
SHEET

A1.1

GRAPHIC SCALE
 0' 12' 24'

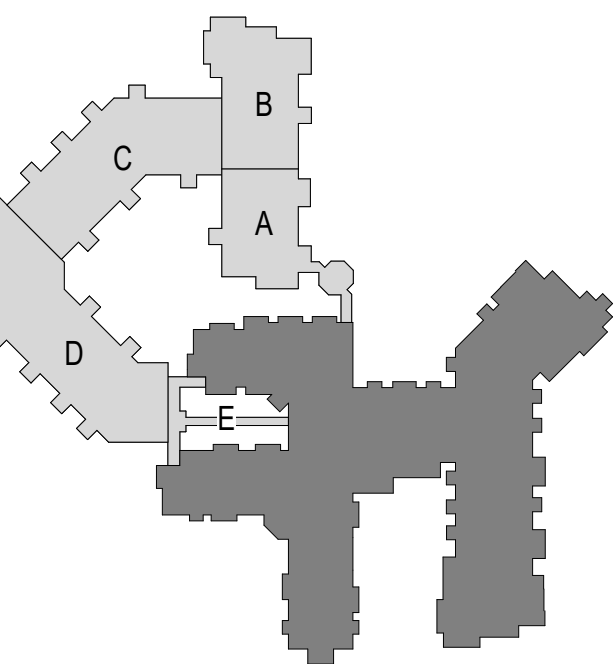
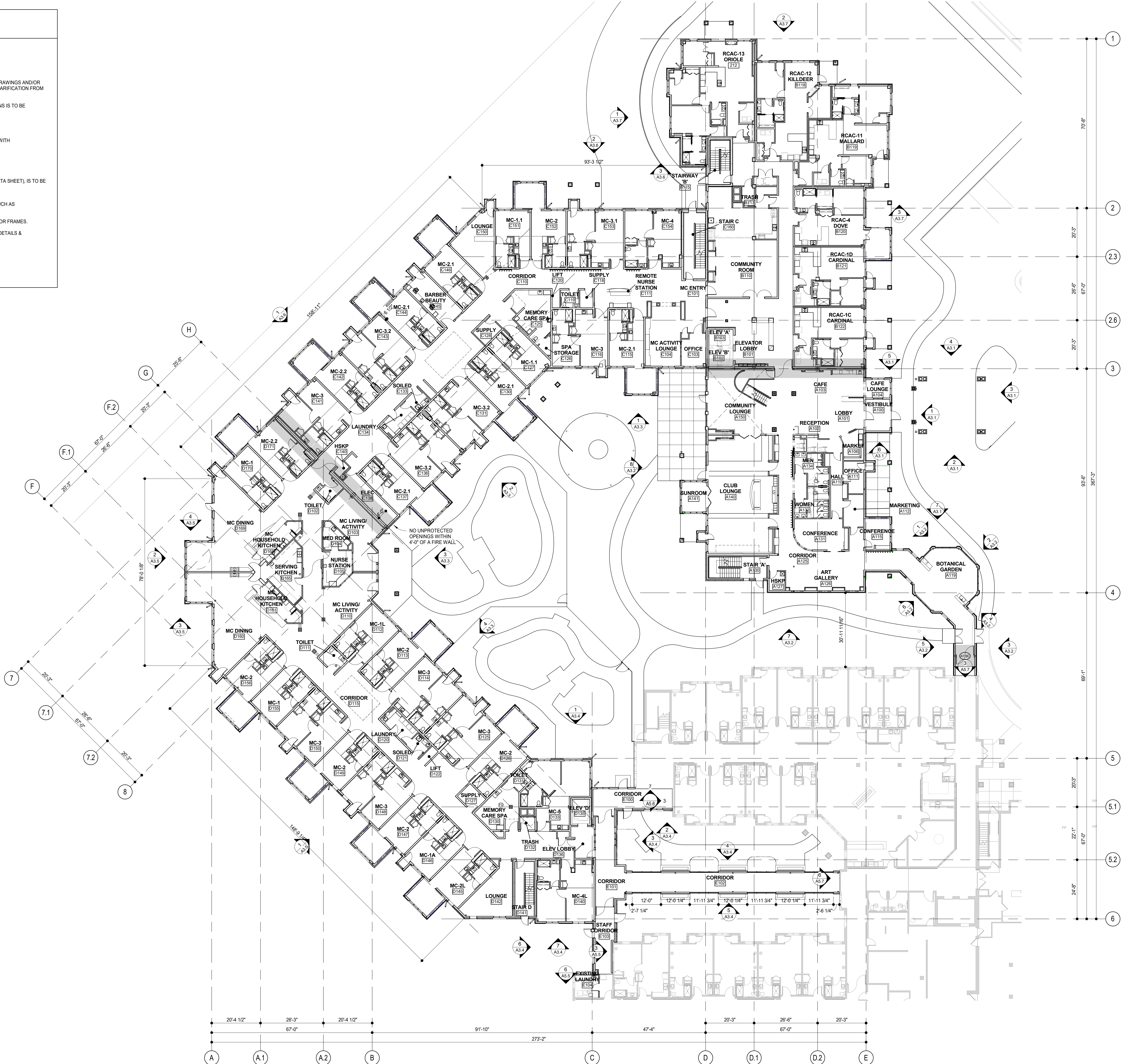
© 2018 Project 17031 Eagle Crest S, Central, R17, gunderson.rn
 3/12/2018 4:47:45 PM

1 SITE PLAN
 A1.1 1" = 30'-0"



FLOOR PLAN GENERAL NOTES

- A) DO NOT SCALE DRAWINGS.
 B) NOTIFY ARCHITECT IMMEDIATELY OF ANY DISCREPANCIES.
 C) IN THE CASE OF AMBIGUITIES, DISCREPANCIES, OR IRREGULARITIES IN THE DRAWINGS AND/OR SPECIFICATIONS, THE CONTRACTOR SHALL SUBMIT A WRITTEN REQUEST FOR CLARIFICATION FROM THE ARCHITECT BEFORE PROCEEDING WITH THE WORK.
 D) IN ALL CONSTRUCTION TYPES, ALL WOOD USED IN THE FOLLOWING LOCATIONS IS TO BE PRESERVATIVE-TREATED:
 1. WOOD IN CONTACT WITH THE GROUND OR WATER.
 2. WOOD IN EXTERIOR FOUNDATION WALLS.
 3. WOOD IN CONTACT WITH CONCRETE SLABS-ON-GRADE, OR IN CONTACT WITH CONCRETE OR MASONRY FOUNDATION WALLS.
 4. WOOD WITHIN A CRAWL SPACE OVER EXPOSED EARTH.
 5. AT OTHER LOCATIONS NOTED ON THE CONSTRUCTION DOCUMENTS.
 E) ALL WOOD USED IN BUILDINGS OF TYPE I OR II CONSTRUCTION (SEE CODE DATA SHEET), IS TO BE FIRE-RETARDANT-TREATED, WITH THE FOLLOWING EXCEPTIONS:
 1. PRESERVATIVE-TREATED WOOD AS NOTED IN GENERAL NOTE 'D' ABOVE.
 2. INTERIOR FLOOR FINISH AND INTERIOR FINISHES, TRIM AND MILLWORK SUCH AS CABINETS, DOORS, DOOR FRAMES AND WINDOWS.
 3. BLOCKING FOR HANDRAILS, MILLWORK, CABINETS, AND WINDOW AND DOOR FRAMES.
 F) SEE SHEET A0.2 FOR SYMBOLS, INDICATION OF MATERIALS, PARTITION TYPE DETAILS & ABBREVIATIONS.

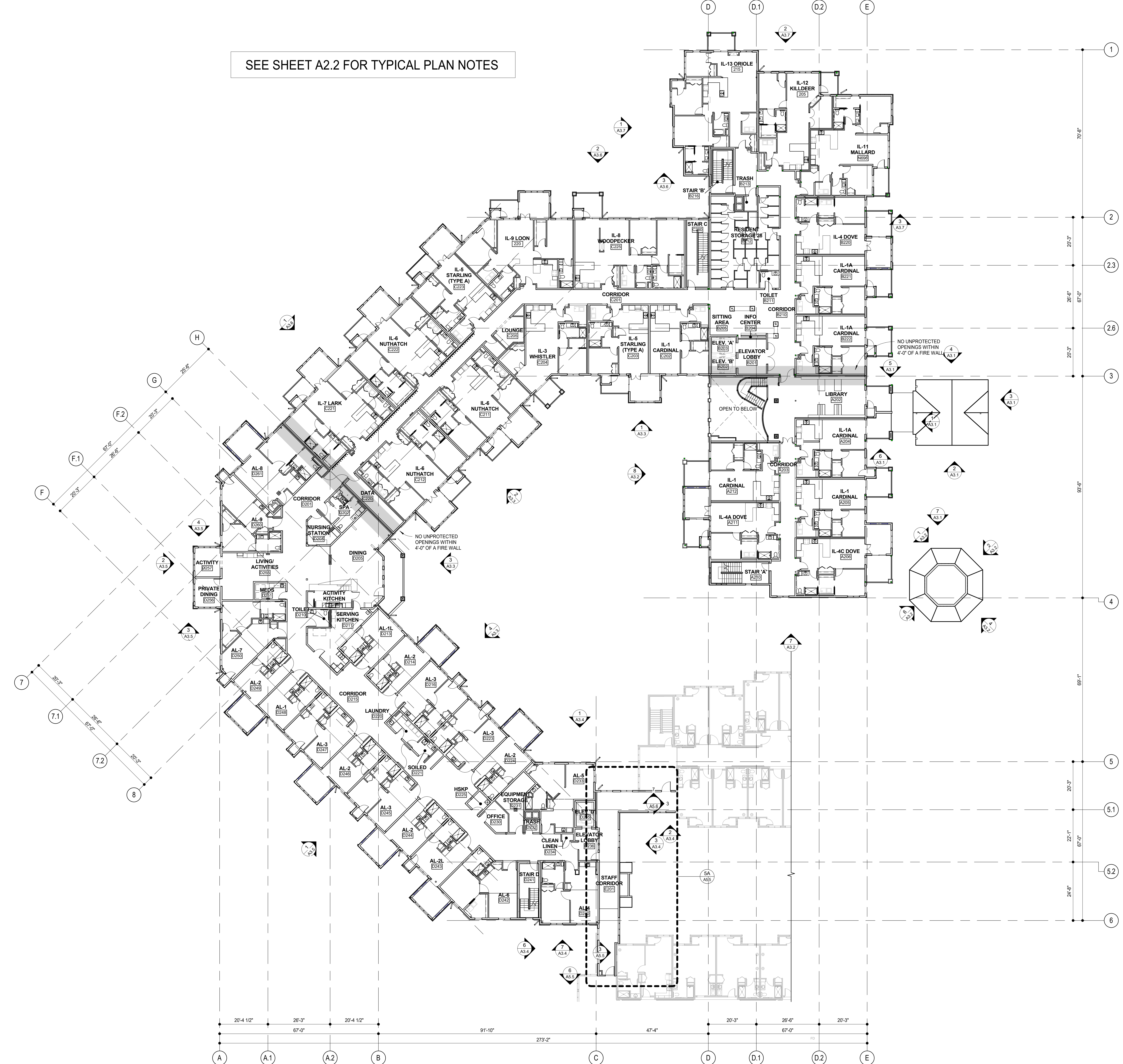


Based on Revision:

Revision	By	Date

SHEET

SEE SHEET A2.2 FOR TYPICAL PLAN NOTES



1
A2.3 **SECOND LEVEL FLOOR PLAN - OVERALL**
1/16" = 1'-0"

TRUE NORTH
PROJECT NORTH

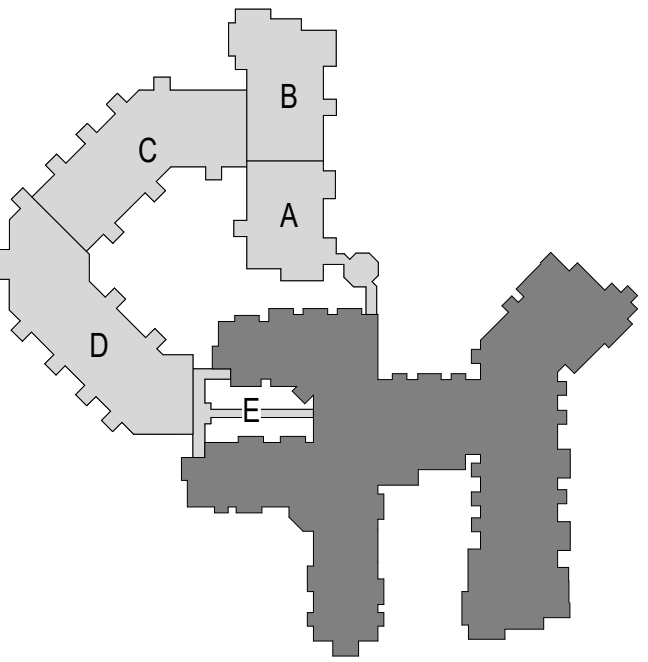
POPE ARCHITECTS

POPE ASSOCIATES, INC.
1295 BANDANA BLVD N, SUITE 200
ST. PAUL, MN 55108-2735
(651) 642-9200 | FAX (651) 642-1101
www.popearch.com

BETHANY
LUTHERAN HOMES
A GUNDERSEN HEALTH SYSTEM AFFILIATE

**EAGLE CREST
SOUTH ADDITION
PHASE 2
LA CROSSE, WI**

**CITY SUBMISSION
CUP & PDD
3/2/2018**



**OVERALL SECOND
LEVEL FLOOR PLAN**

Notes on Plans:

Commission No: 12728-17031
Prepared by: MEJ
Checked by: TP

SEE SHEET A2.2 FOR TYPICAL PLAN NOTES

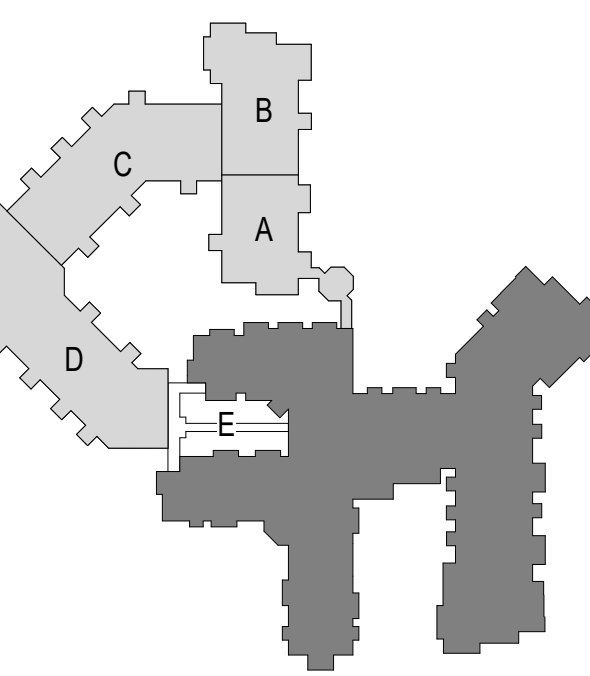


POPE ASSOCIATES, INC.
1295 BANDANA BLVD N, SUITE 200
ST. PAUL, MN 55108-2735
(651) 642-9200 | FAX (651) 642-1101
www.popearch.com



EAGLE CREST
SOUTH ADDITION
PHASE 2
LA CROSSE, WI

CITY SUBMISSION
CUP & PDD
3/2/2018



OVERALL FOURTH
LEVEL FLOOR PLAN

Revision table with columns for revision number and description.

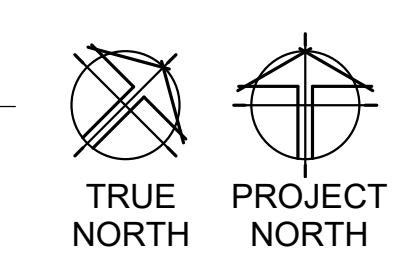
Commission No: 12728-17031
Drawn by: MEJ
Checked by: TP

SHEET

A2.5



1 A2.5 FOURTH LEVEL FLOOR PLAN - OVERALL
1/16" = 1'-0"

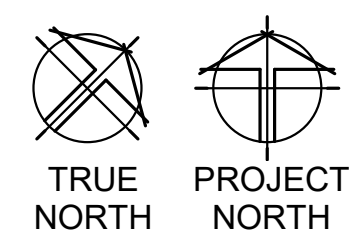


© 2018 Pope Associates, Inc. Eagle Crest II, Central, RVT, gpedersen, et al. 3/1/2018 11:00:18 AM

SEE SHEET A2.2 FOR TYPICAL PLAN NOTES



1
A2.6 FIFTH LEVEL FLOOR PLAN - OVERALL
1/16" = 1'-0"

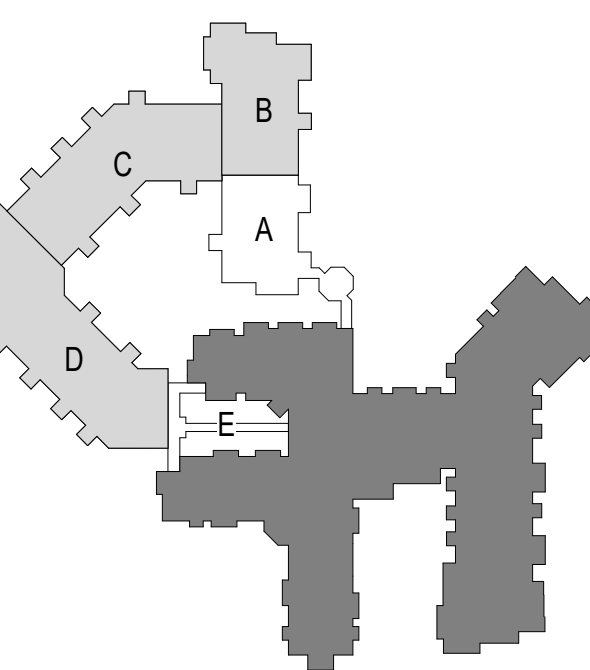


POPE ASSOCIATES, INC.
1295 BANDANA BLVD N, SUITE 200
ST. PAUL, MN 55108-2735
(651) 642-9200 | FAX (651) 642-1101
www.popearch.com



EAGLE CREST
SOUTH ADDITION
PHASE 2
LA CROSSE, WI

CITY SUBMISSION
CUP & PDD
3/2/2018



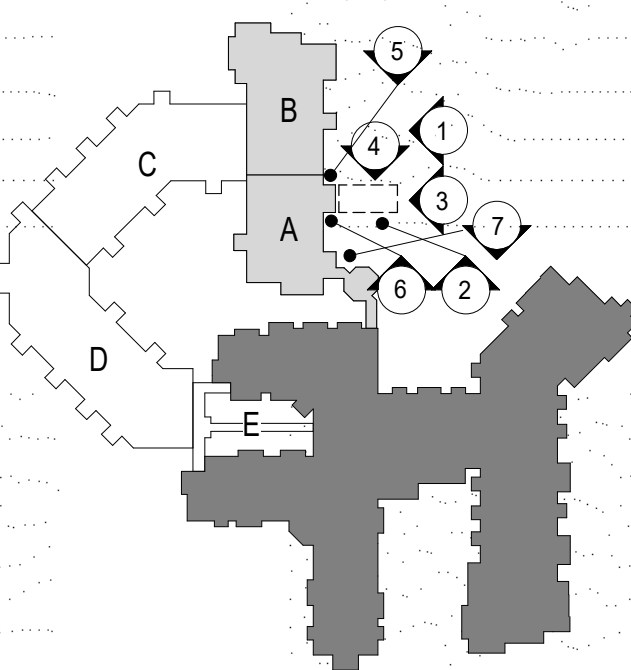
OVERALL FIFTH
LEVEL FLOOR PLAN

Based on Revisions:

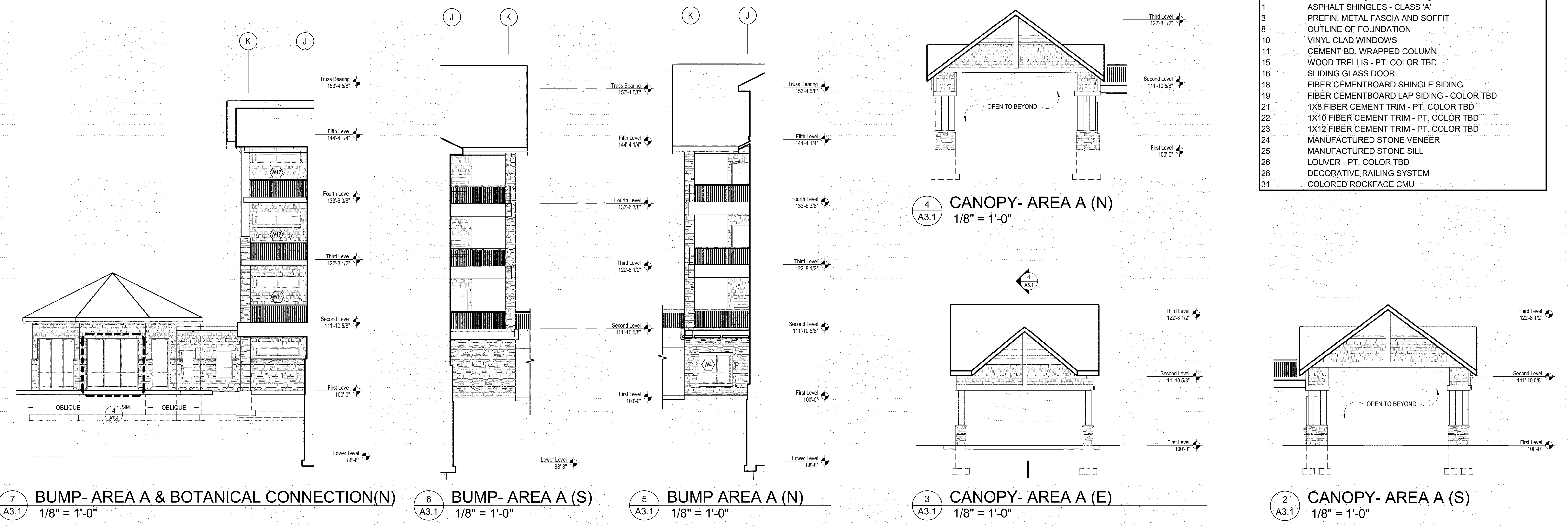
Commission No: 12728-17031
Drawn by: MEJ
Checked by: TP

SHEET

A2.6



Keynote Legend	
1	ASPHALT SHINGLES - CLASS 'A'
3	PREFIN. METAL FASCIA AND SOFFIT
8	OUTLINE OF FOUNDATION
10	VINYL CLAD WINDOWS
11	CEMENT BD. WRAPPED COLUMN
15	WOOD TRELLIS - PT. COLOR TBD
16	SLIDING GLASS DOOR
18	FIBER CEMENTBOARD SHINGLE SIDING
19	FIBER CEMENTBOARD LAP SIDING - COLOR TBD
21	1X8 FIBER CEMENT TRIM - PT. COLOR TBD
22	1X10 FIBER CEMENT TRIM - PT. COLOR TBD
23	1X12 FIBER CEMENT TRIM - PT. COLOR TBD
24	MANUFACTURED STONE VENEER
25	MANUFACTURED STONE SILL
26	LOUVER - PT. COLOR TBD
28	DECORATIVE RAILING SYSTEM
31	COLORED ROCKFACE CMU



7 BUMP- AREA A & BOTANICAL CONNECTION (N)
A3.1 1/8" = 1'-0"

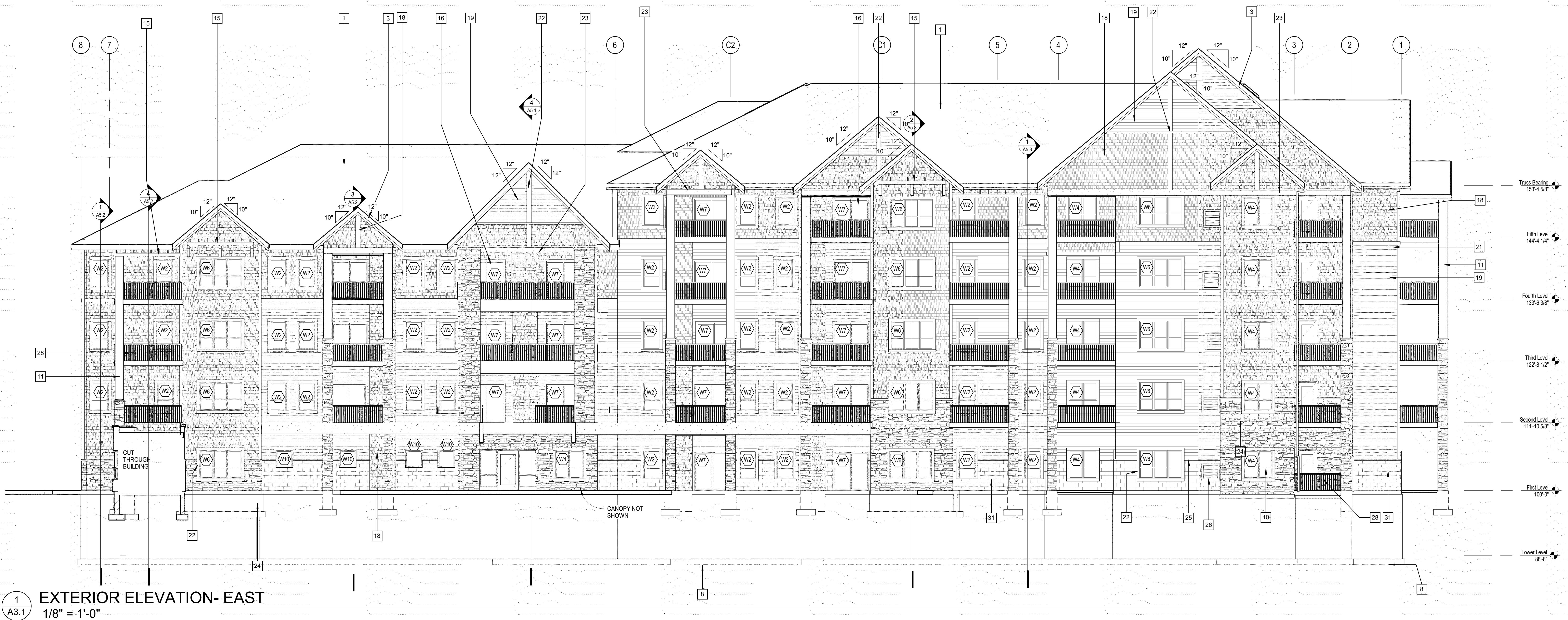
6 BUMP- AREA A (S)
A3.1 1/8" = 1'-0"

5 BUMP AREA A (N)
A3.1 1/8" = 1'-0"

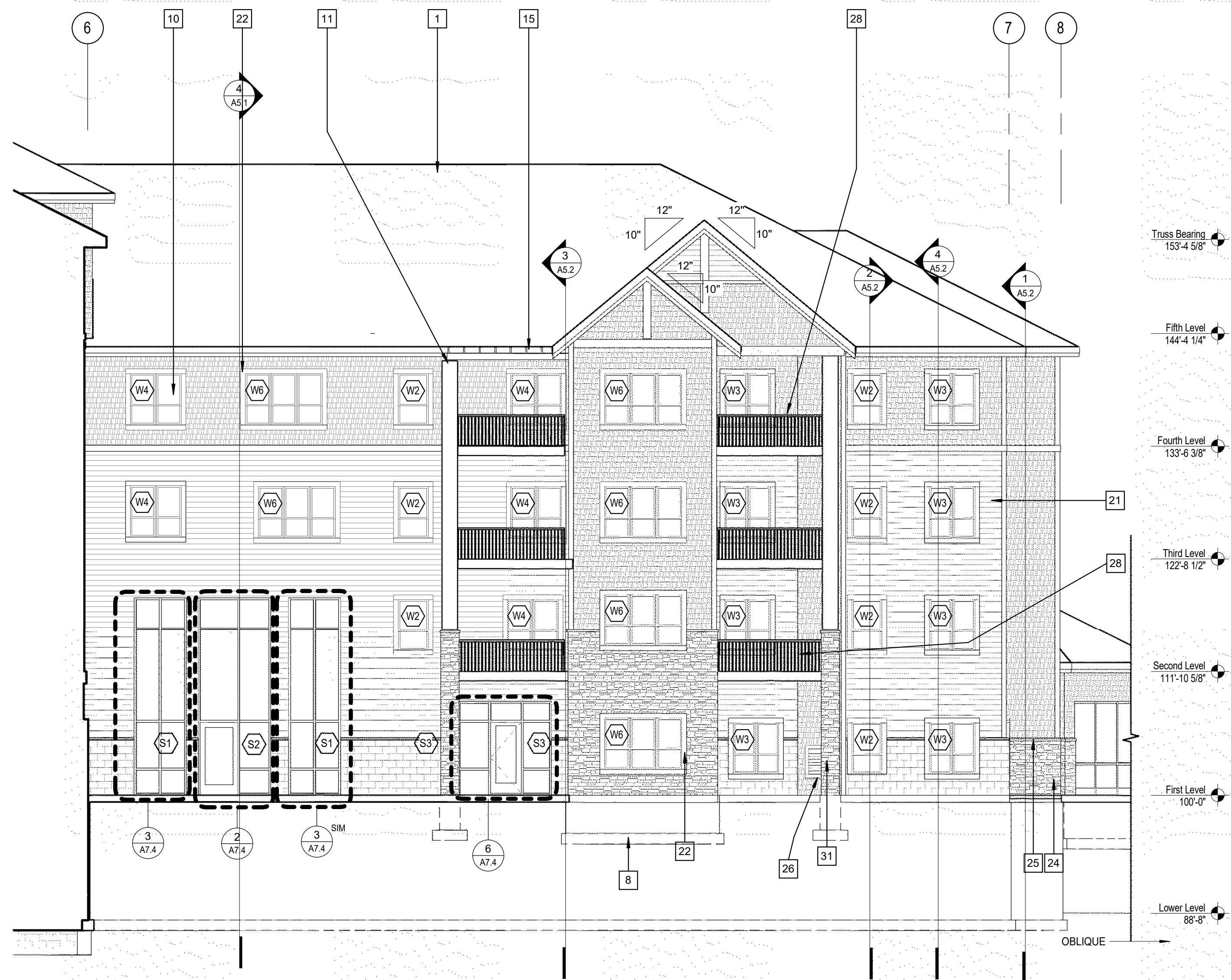
4 CANOPY- AREA A (N)
A3.1 1/8" = 1'-0"

3 CANOPY- AREA A (E)
A3.1 1/8" = 1'-0"

2 CANOPY- AREA A (S)
A3.1 1/8" = 1'-0"

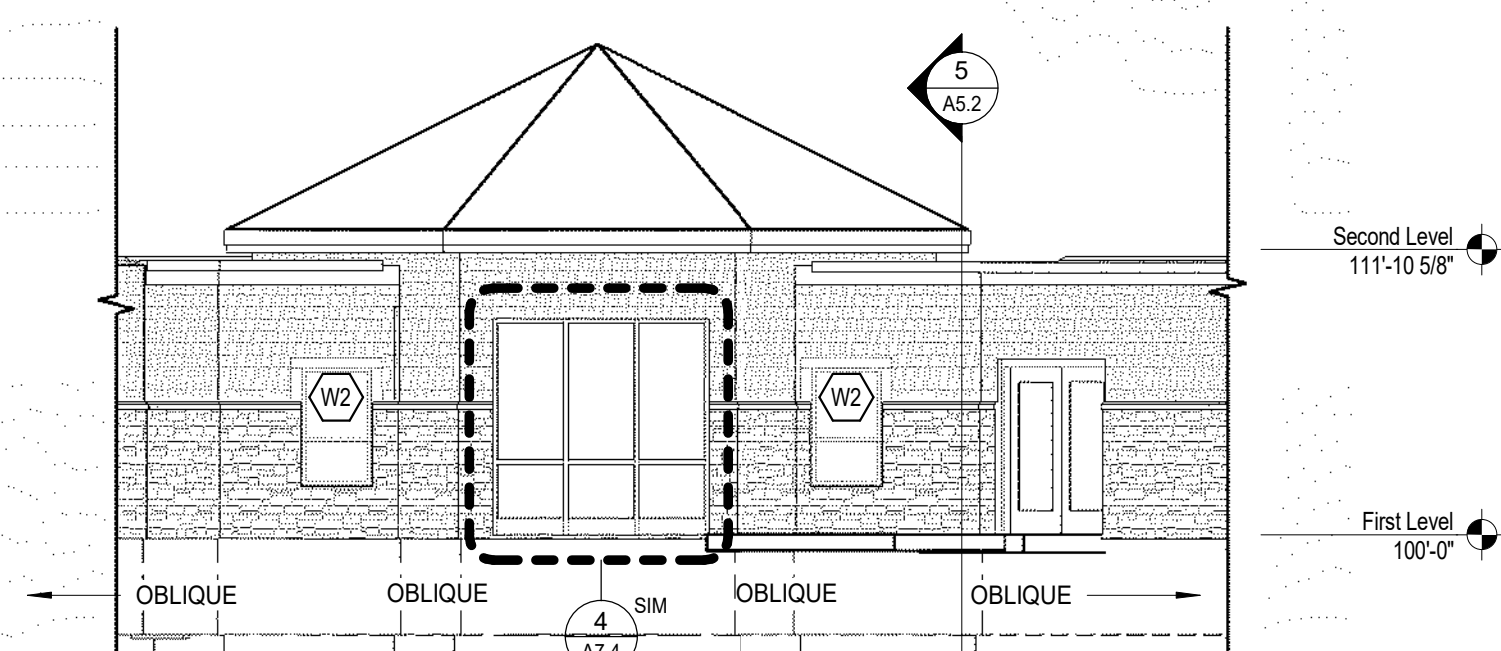


1 EXTERIOR ELEVATION- EAST
A3.1 1/8" = 1'-0"

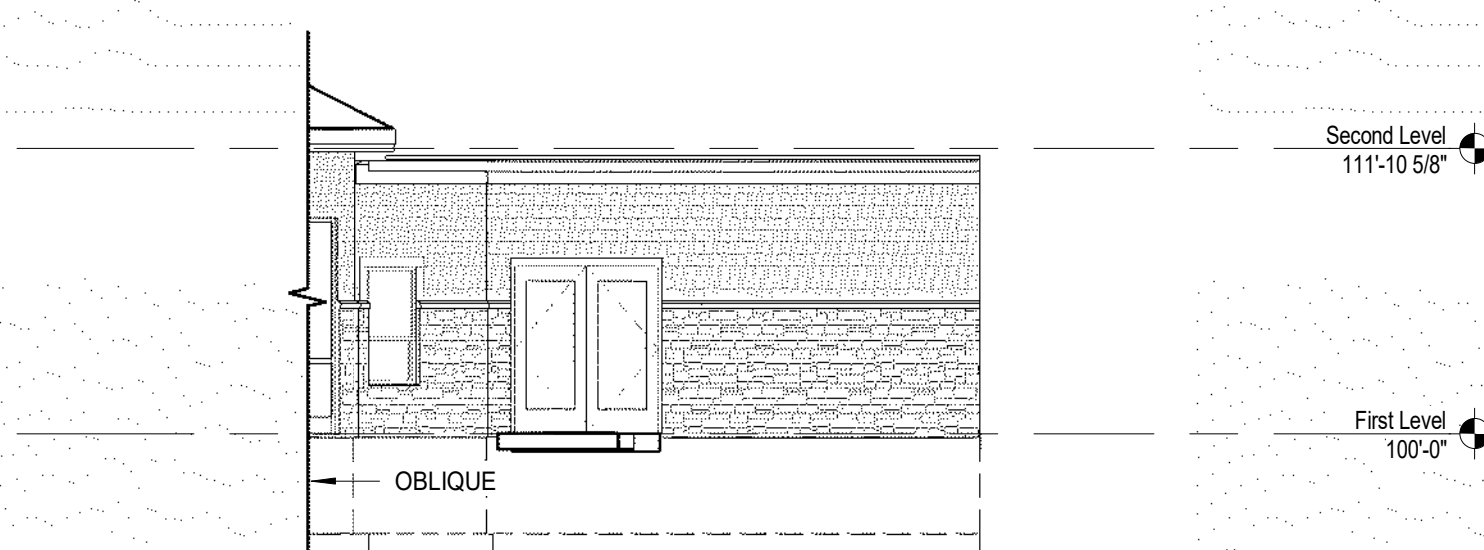


8 EXTERIOR ELEVATION- AREA A (W)
1/8" = 1'-0"

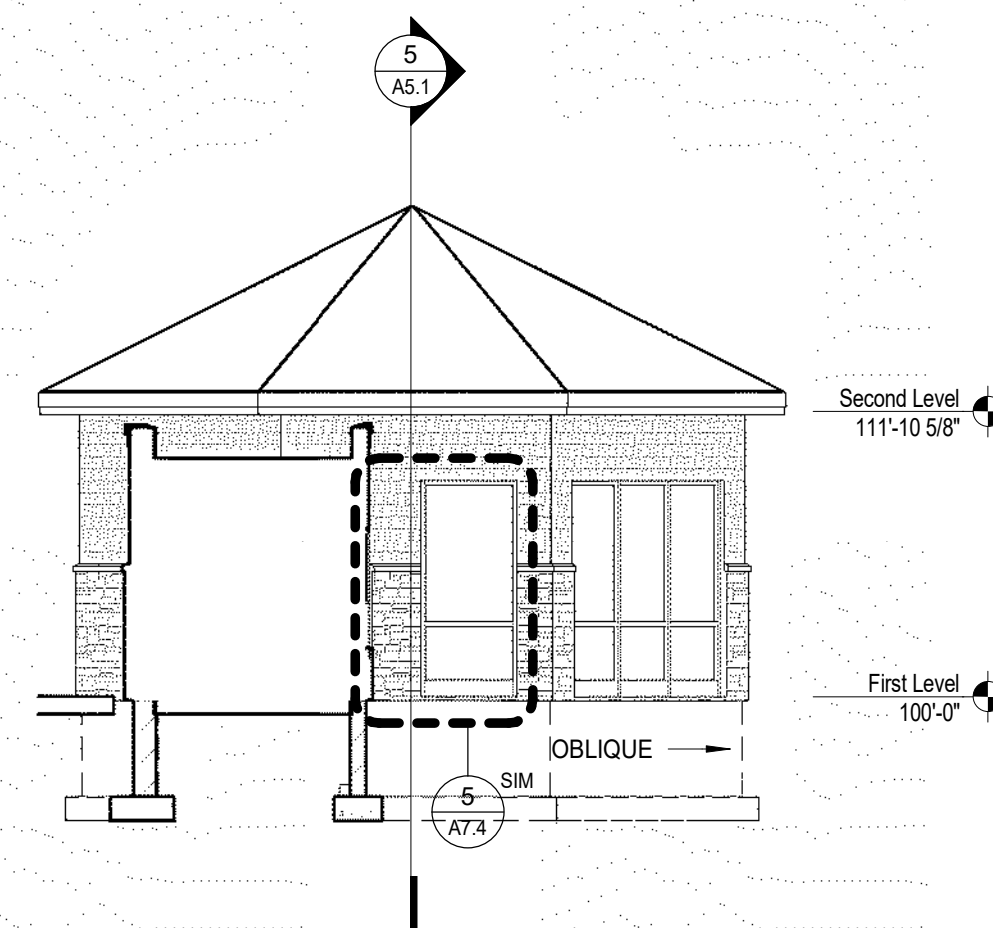
7 EXTERIOR ELEVATION- AREA A (S)
1/8" = 1'-0"



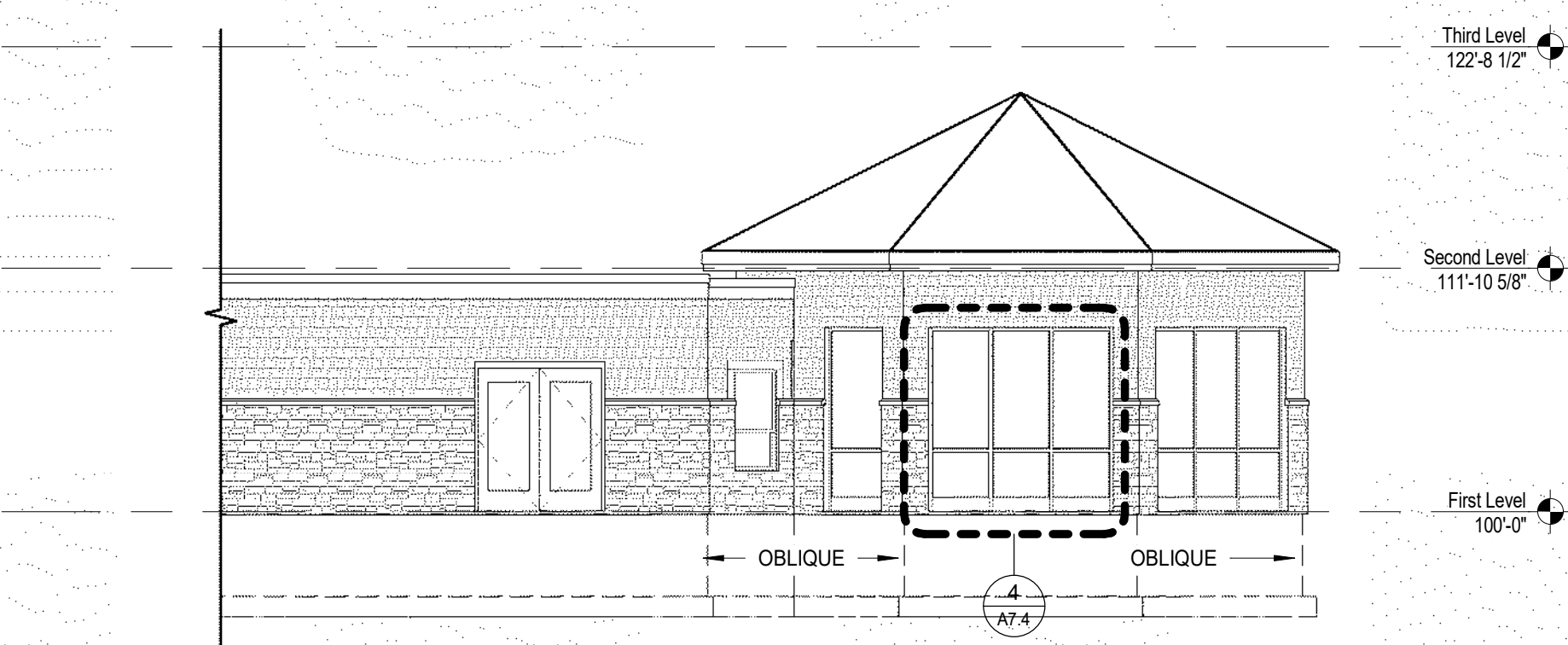
6 BOTANICAL GARDEN (SW)
1/8" = 1'-0"



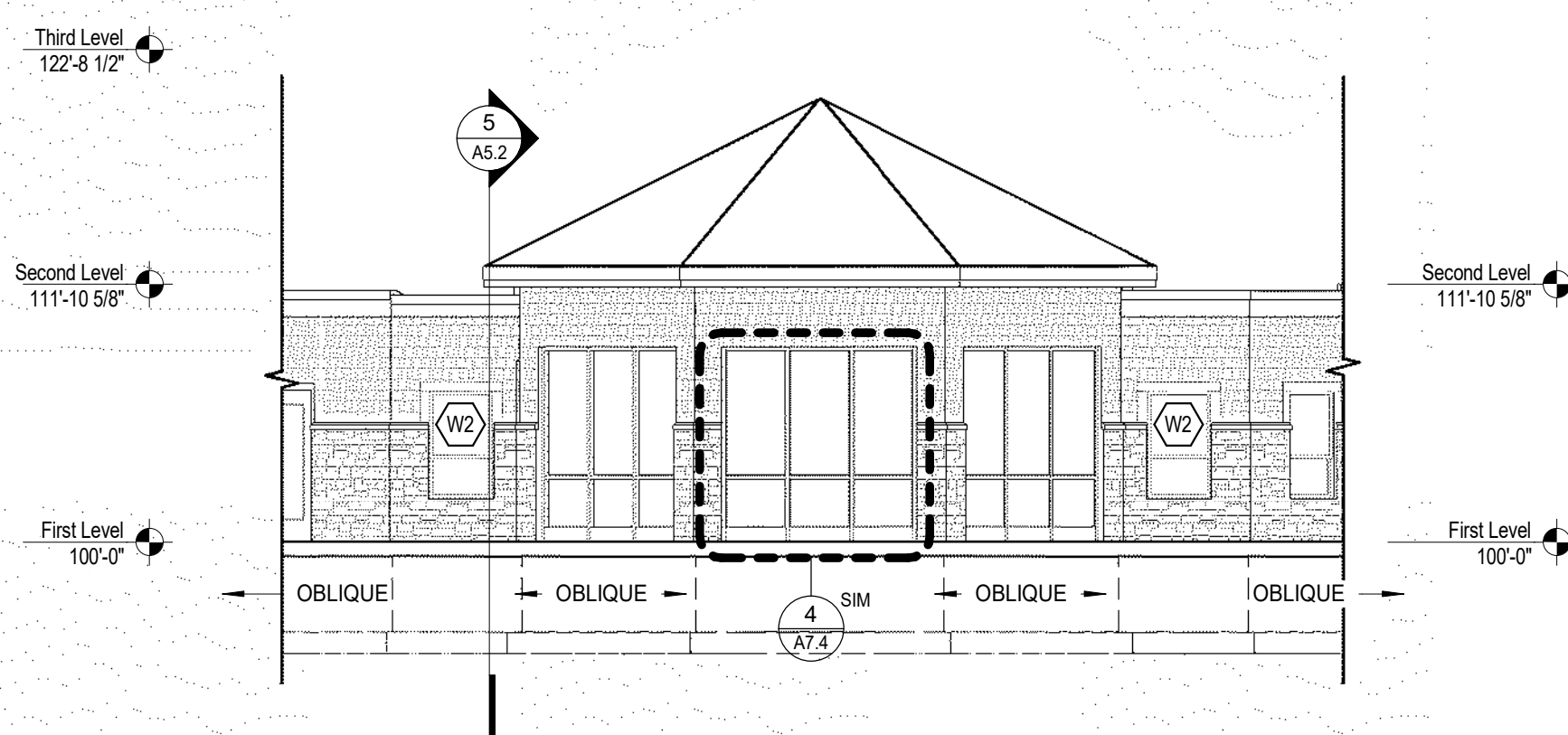
5 BOTANICAL GARDEN LINK (W)
1/8" = 1'-0"



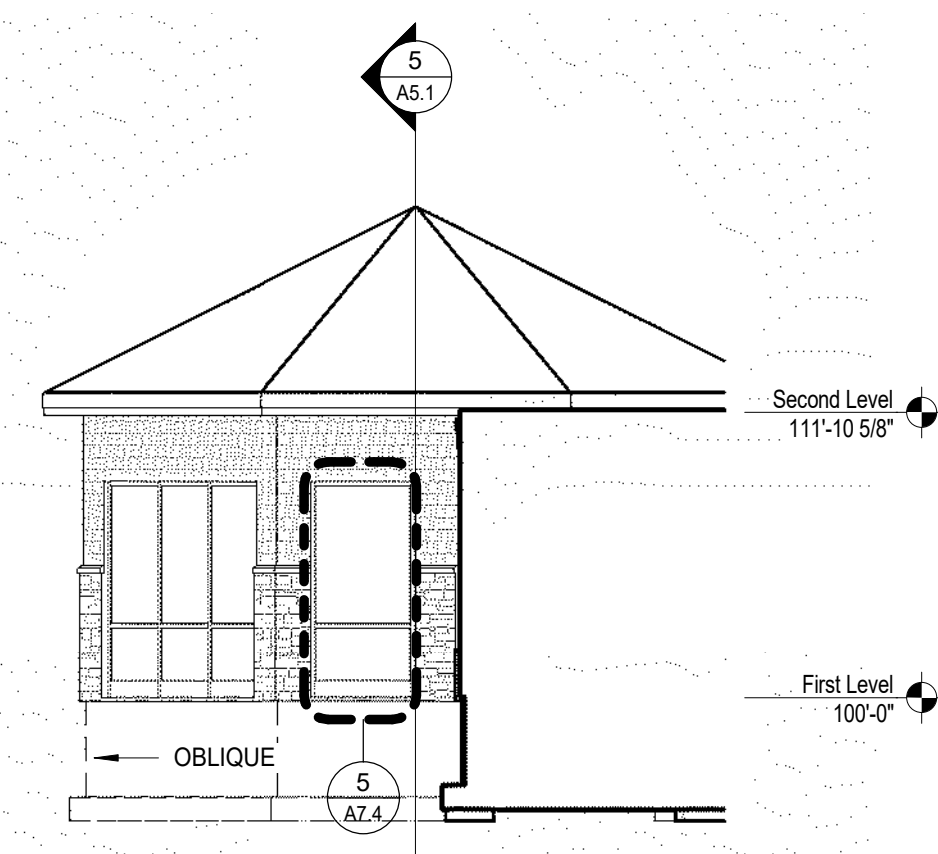
4 BOTANICAL GARDEN (SE)
1/8" = 1'-0"



3 BOTANICAL GARDEN LINK (E)
1/8" = 1'-0"

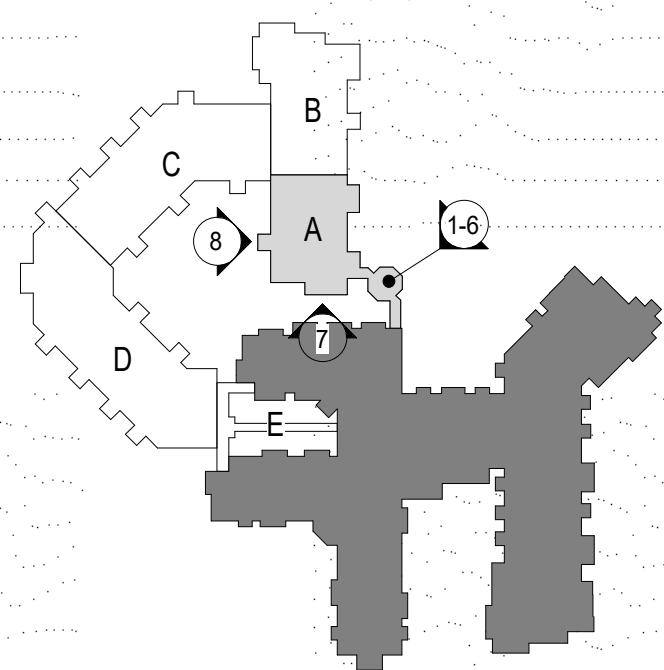


2 BOTANICAL GARDEN (NE)
1/8" = 1'-0"



1 BOTANICAL GARDEN (NW)
1/8" = 1'-0"

Keystone Legend	
1	ASPHALT SHINGLES - CLASS 'A'
8	OUTLINE OF FOUNDATION
10	VINYL CLAD WINDOWS
11	CEMENT BD. WRAPPED COLUMN
15	WOOD TRELLIS - PT. COLOR TBD
21	1X8 FIBER CEMENT TRIM - PT. COLOR TBD
22	1X10 FIBER CEMENT TRIM - PT. COLOR TBD
24	MANUFACTURED STONE VENEER
25	MANUFACTURED STONE SILL
26	LOUVER - PT. COLOR TBD
28	DECORATIVE RAILING SYSTEM
31	COLOR ROCKFACE CMU



Notes on Plans:	



POPE ASSOCIATES, INC.
 1295 BANDANA BLVD N, SUITE 200
 ST. PAUL, MN 55108-2735
 (651) 642-9200 | FAX (651) 642-1101
 www.popearch.com

BETHANY
 LUTHERAN HOMES
 A GUNDERSEN HEALTH SYSTEM AFFILIATE

EAGLE CREST
 SOUTH ADDITION
 PHASE 2
 LA CROSSE, WI



4
 A3.3 EXTERIOR ELEVATION- AREA D (NE)
 1/8" = 1'-0"

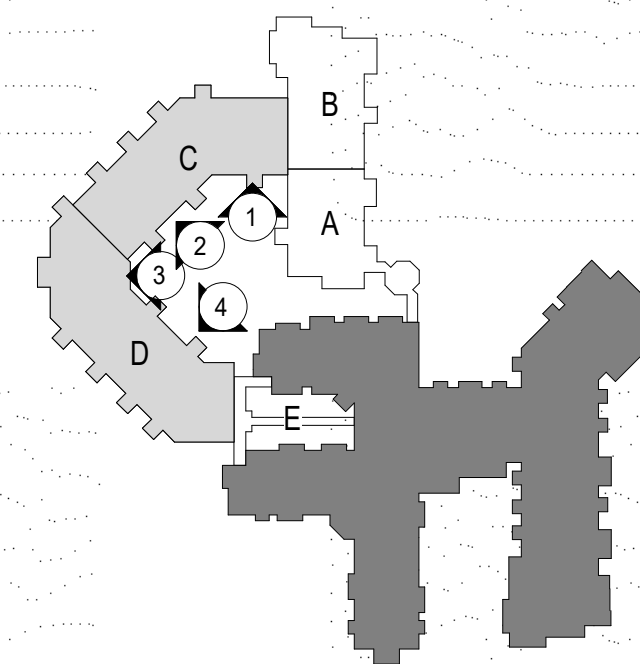


3
 A3.3 EXTERIOR ELEVATION 1- AREA D (E)
 1/8" = 1'-0"

Keynote Legend

- 1 ASPHALT SHINGLES - CLASS 'A'
- 3 PREFIN. METAL FASCIA AND SOFFIT
- 8 OUTLINE OF FOUNDATION
- 10 VINYL CLAD WINDOW/S
- 11 CEMENT BD. WRAPPED COLUMN
- 16 SLIDING GLASS DOOR
- 18 FIBER CEMENTBOARD SHINGLE SIDING
- 19 FIBER CEMENTBOARD LAP SIDING - COLOR TBD
- 20 1X6 FIBER CEMENT TRIM - PT. COLOR TBD
- 21 1X8 FIBER CEMENT TRIM - PT. COLOR TBD
- 22 1X10 FIBER CEMENT TRIM - PT. COLOR TBD
- 23 1X12 FIBER CEMENT TRIM - PT. COLOR TBD
- 24 MANUFACTURED STONE VENEER
- 25 MANUFACTURED STONE SILL
- 28 DECORATIVE RAILING SYSTEM
- 31 COLORED ROCKFACE CMU

CITY SUBMISSION
 CUP & PDD
 3/2/2018



EXTERIOR
 ELEVATIONS- AREAS
 C & D

Notes on Plans:

12728-17031
 Date by: MEJ
 Check by: TP

SHEET

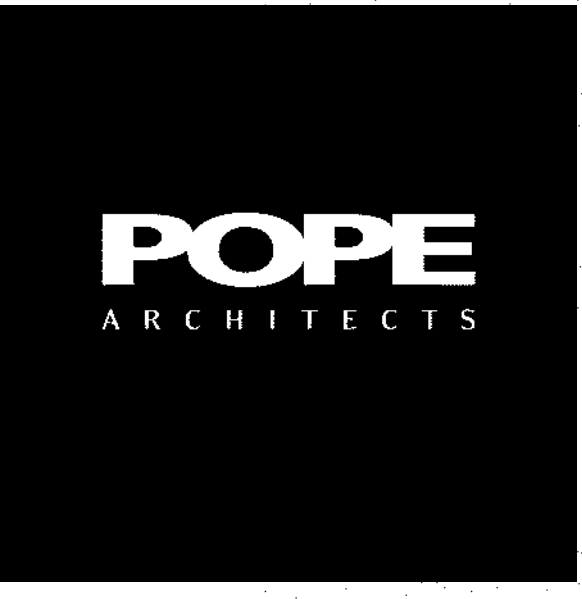
A3.3



2
 A3.3 EXTERIOR ELEVATION- AREA C (SE)
 1/8" = 1'-0"



1
 A3.3 EXTERIOR ELEVATION- AREA C (S)
 1/8" = 1'-0"

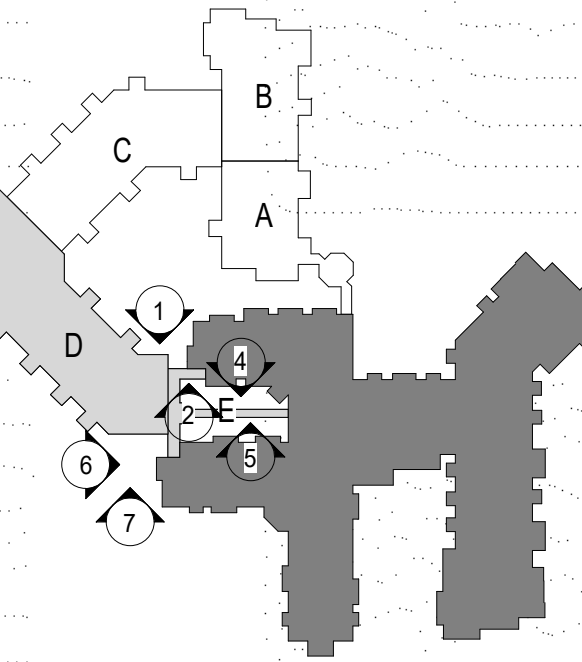


POPE ASSOCIATES, INC.
 1295 BANDANA BLVD N, SUITE 200
 ST. PAUL, MN 55108-2735
 (651) 642-9200 | FAX (651) 642-1101
 www.popearch.com

BETHANY
 LUTHERAN HOMES
 A GUNDERSEN HEALTH SYSTEM AFFILIATE

EAGLE CREST
 SOUTH ADDITION
 PHASE 2
 LA CROSSE, WI

CITY SUBMISSION
 CUP & PDD
 3/2/2018



EXTERIOR
 ELEVATIONS- AREAS
 D & E

Notes on Plans:

Revision No. 12728-17031
 Drawn by MEJ
 Checked by TP

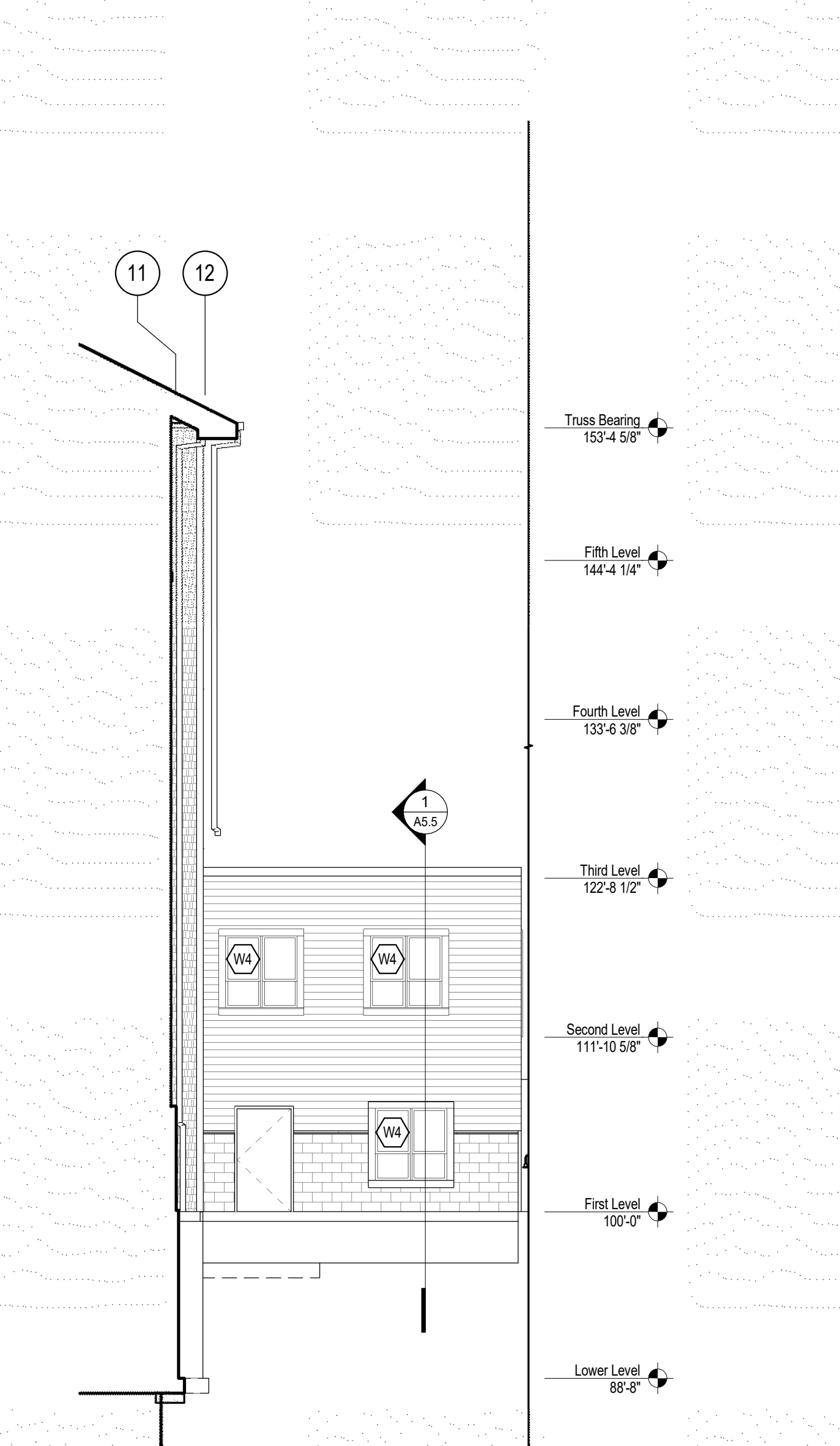
SHEET

A3.4

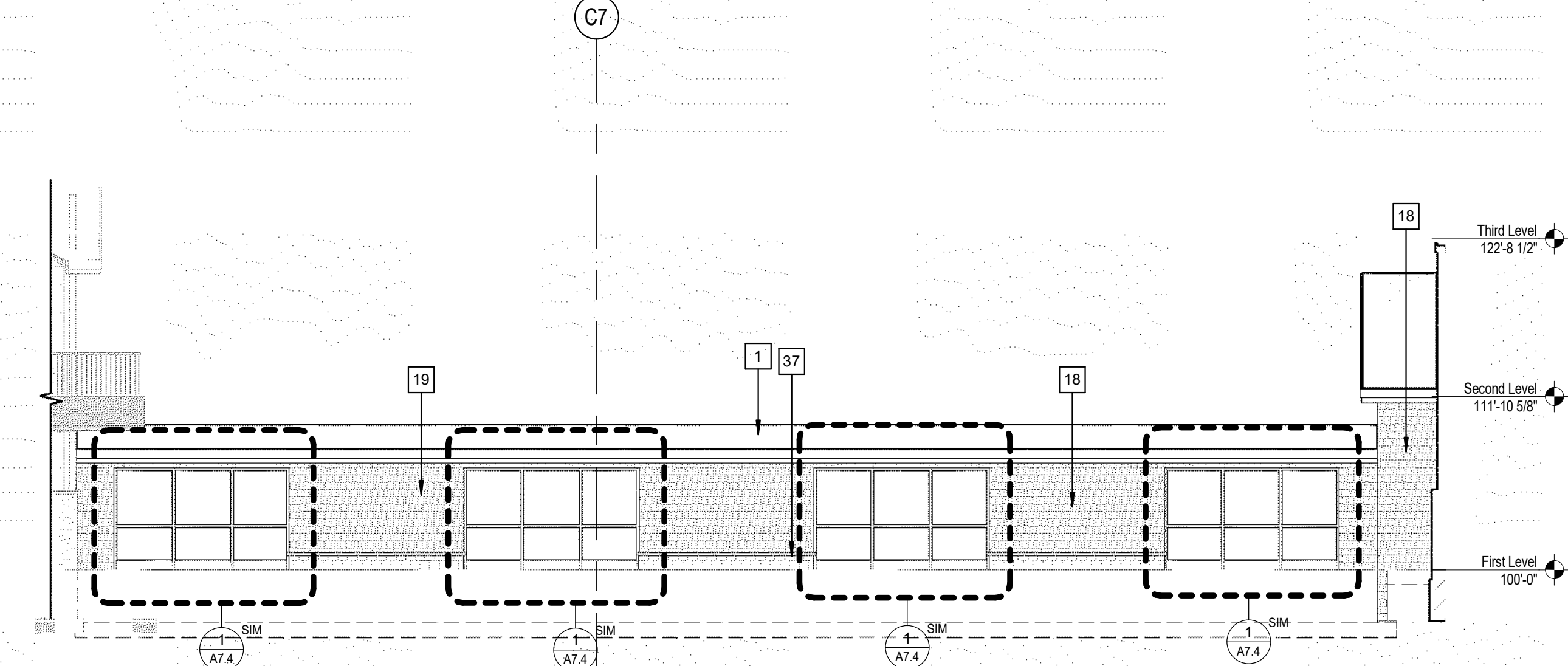
GRAPHIC SCALE
 0' 12'



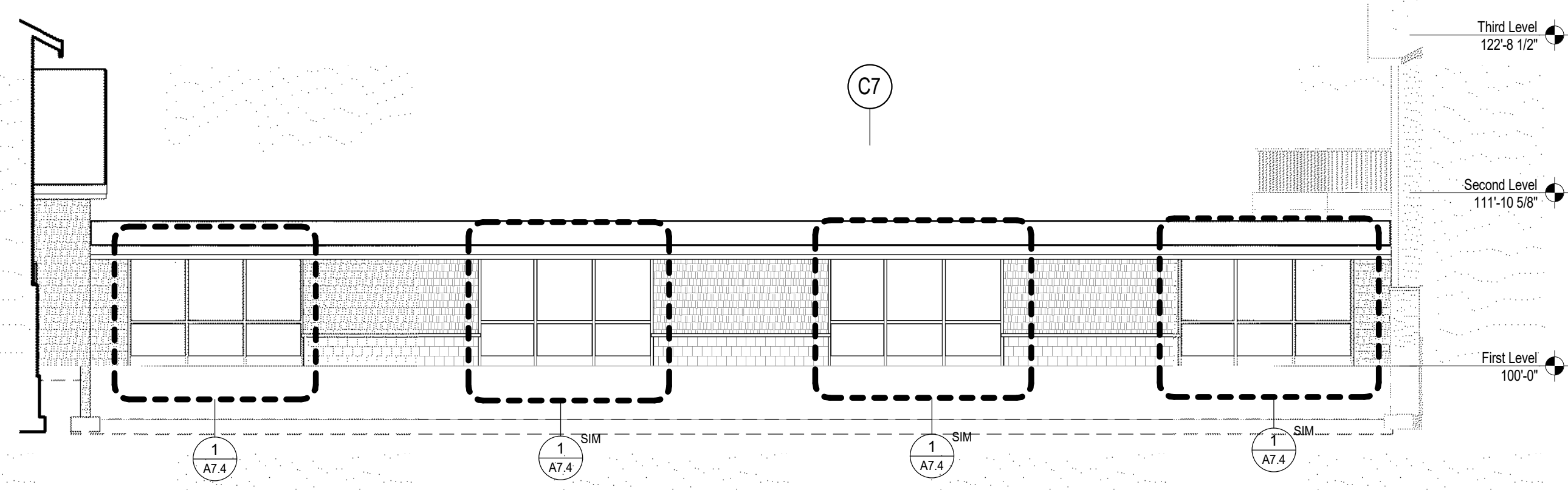
7
 A3.4 EXTERIOR ELEVATION- AREA D (S)
 1/8" = 1'-0"



6
 A3.4 EXTERIOR ELEVATION- AREA D (W)
 1/8" = 1'-0"



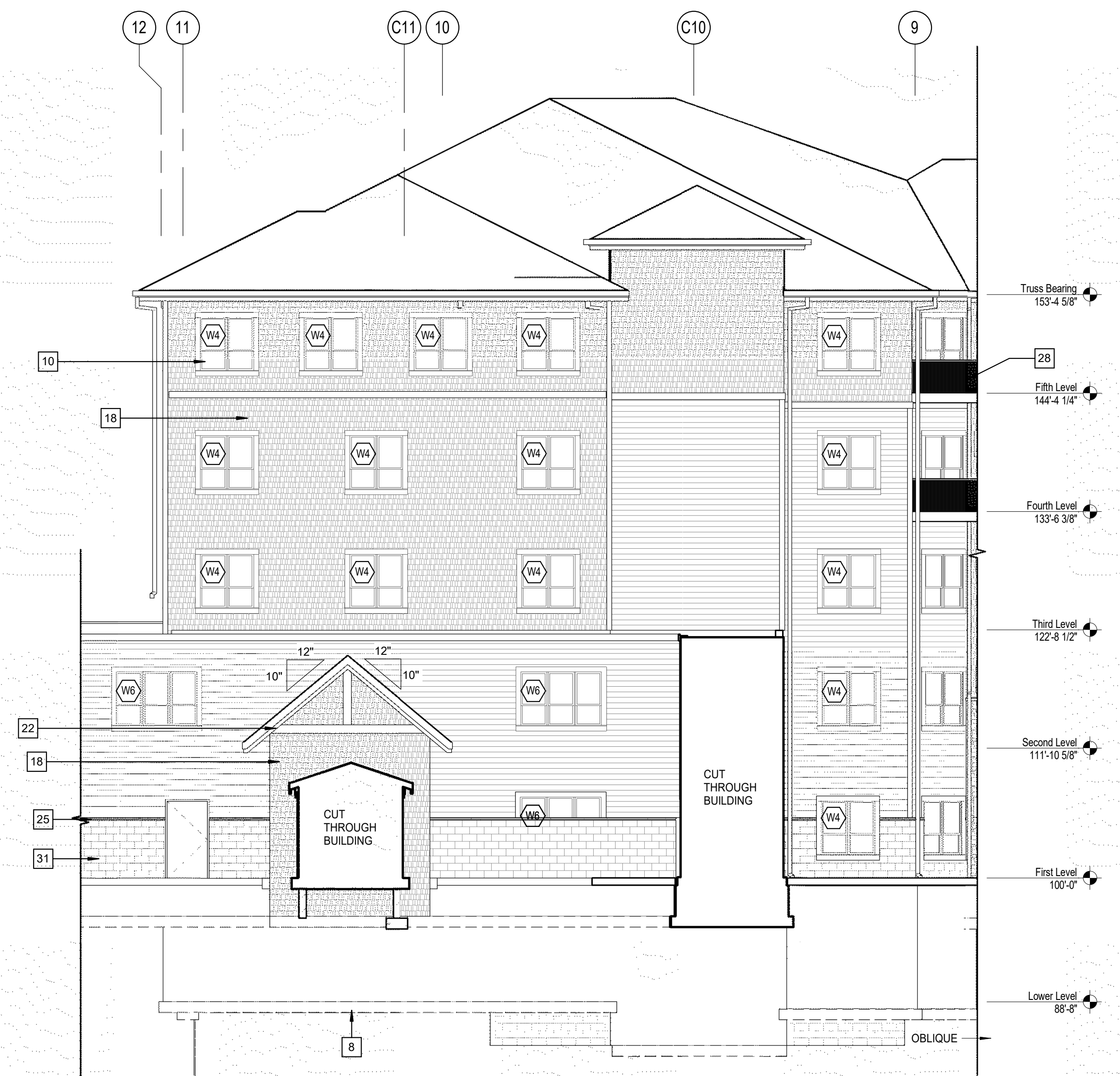
4
 A3.4 EXTERIOR ELEVATION OF LINK - AREA D (N)
 1/8" = 1'-0"



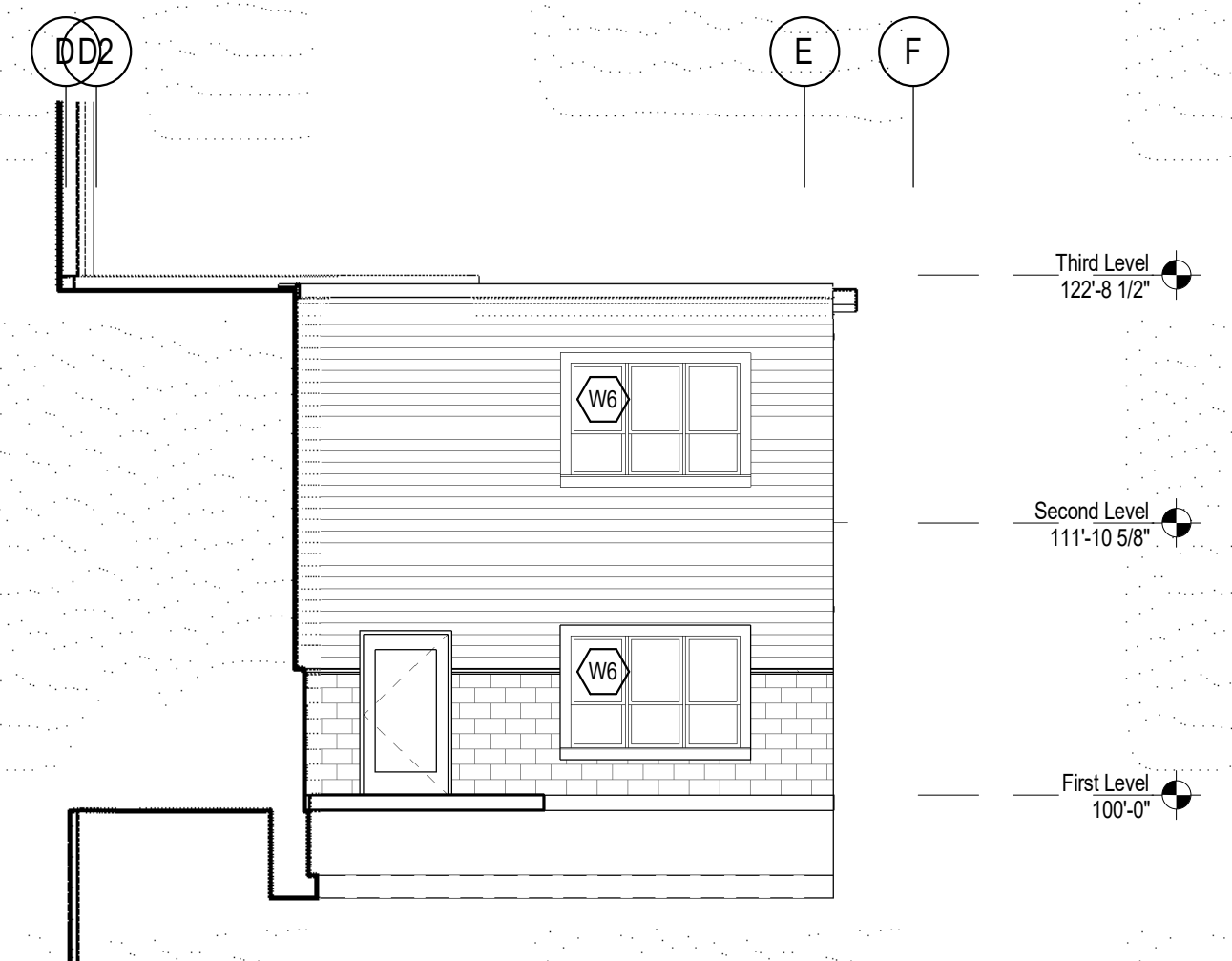
5
 A3.4 EXTERIOR ELEVATION OF LINK - AREA D (S)
 1/8" = 1'-0"

Keynote Legend

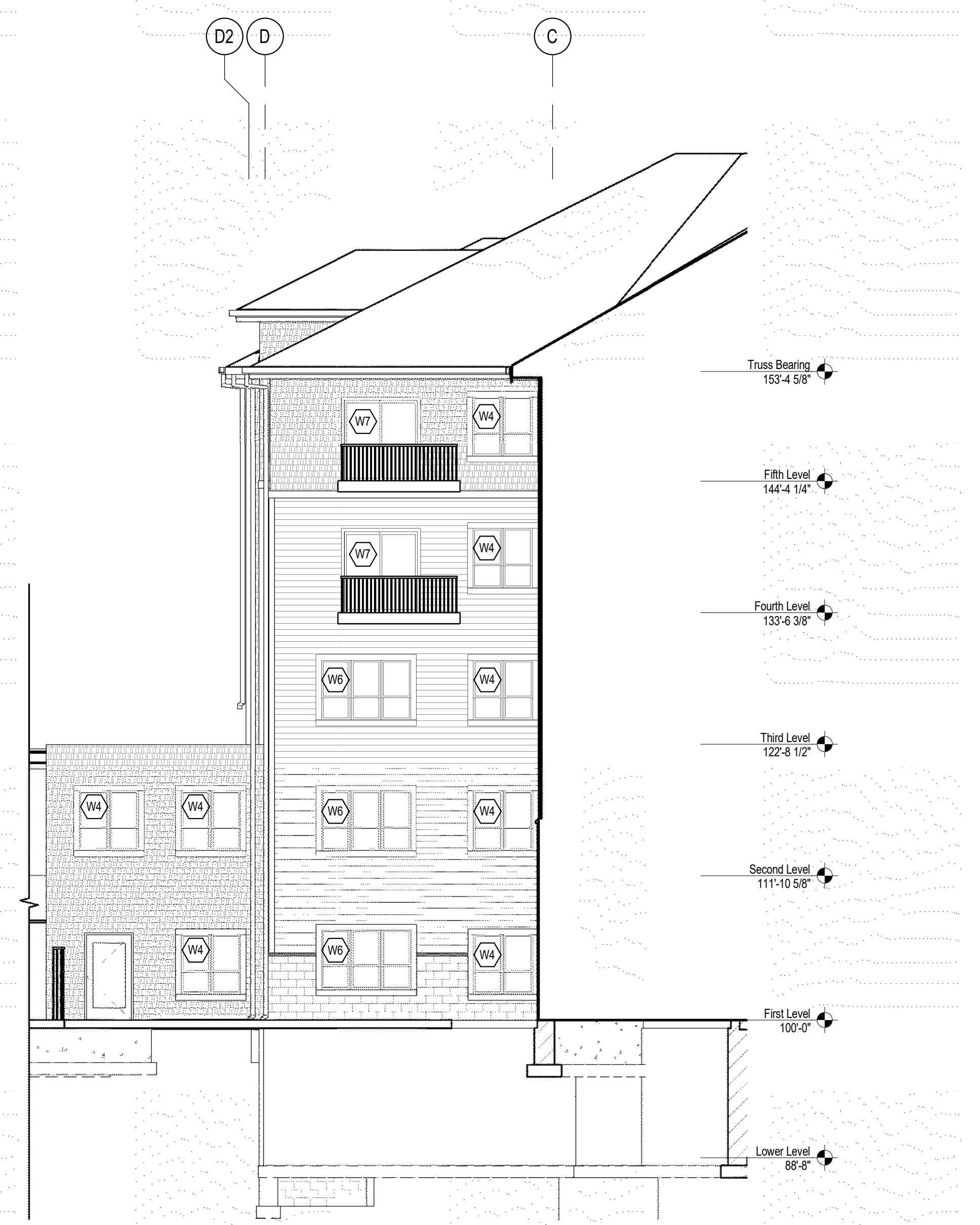
1	ASPHALT SHINGLES - CLASS 'A'
8	OUTLINE OF FOUNDATION
10	VINYL CLAD WINDOWS
18	FIBER CEMENTBOARD SHINGLE SIDING
19	FIBER CEMENTBOARD LAP SIDING - COLOR TBD
22	1X10 FIBER CEMENT TRIM - PT. COLOR TBD
25	MANUFACTURED STONE SILL
28	DECORATIVE RAILING SYSTEM
31	COLORADO ROCKFACE CMU
37	LANDSCAPE BLOCK



3
 A3.4 EXTERIOR ELEVATION 2- AREA D (E)
 1/8" = 1'-0"

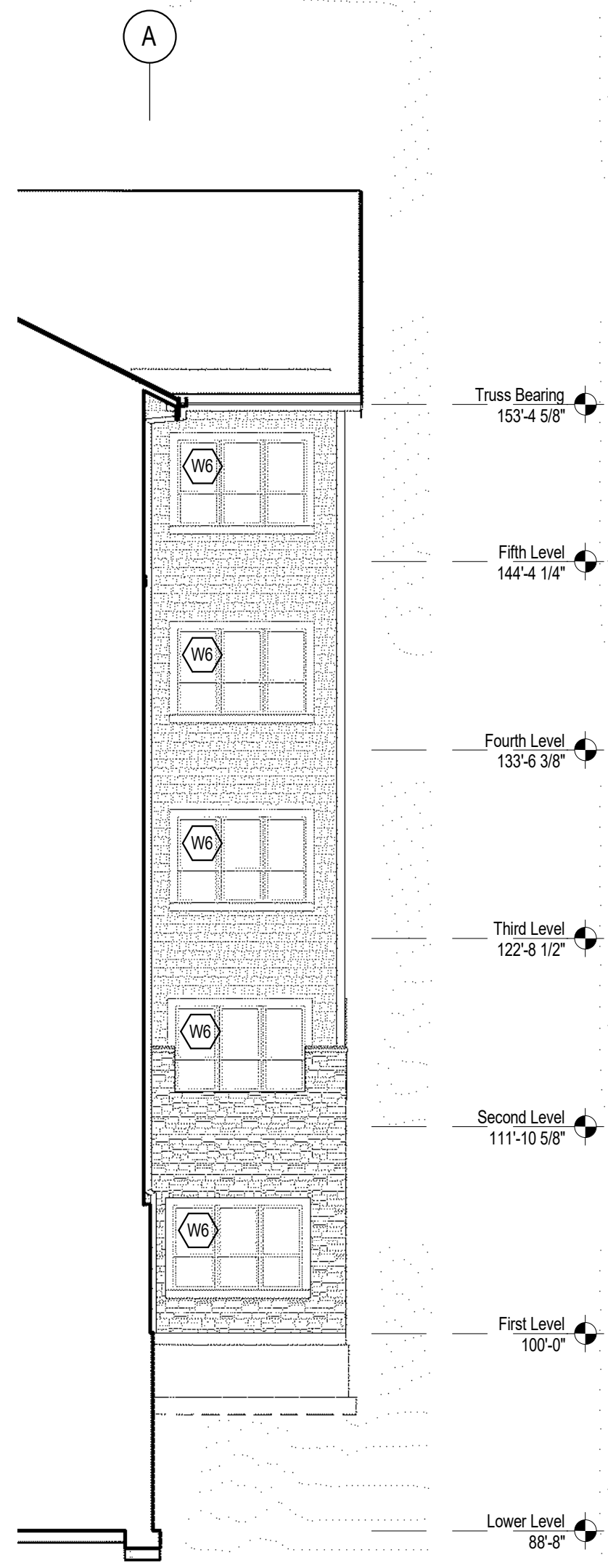


2
 A3.4 LINK ELEVATION- AREA D (S)
 1/8" = 1'-0"

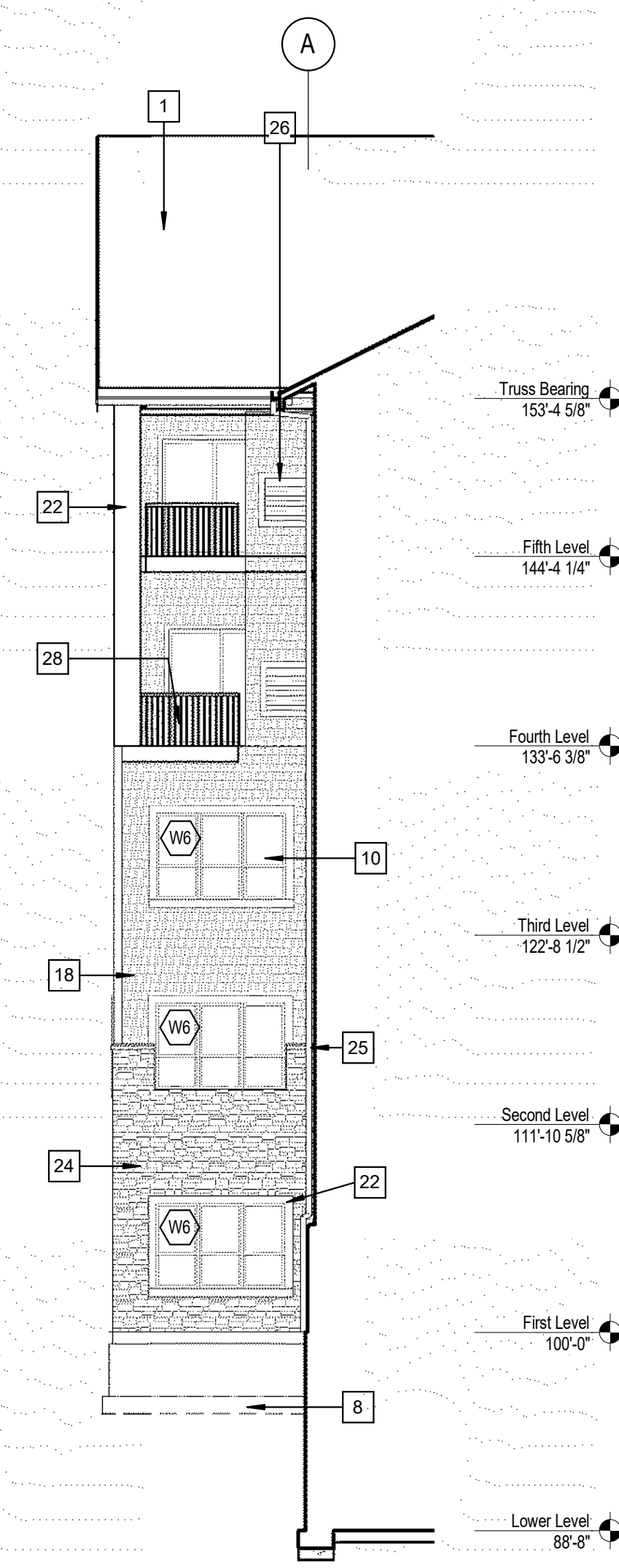


1
 A3.4 EXTERIOR ELEVATION- AREA D (N)
 1/8" = 1'-0"

C:\Reel Projects\17031 Eagle Crest S\Central_R17_Arch\pops.dwg
 12/22/2017 11:36:49 AM



4
A3.5 **BUMP- AREA C (N)**
1/8" = 1'-0"



3
A3.5 **BUMP- AREA C (S)**
1/8" = 1'-0"



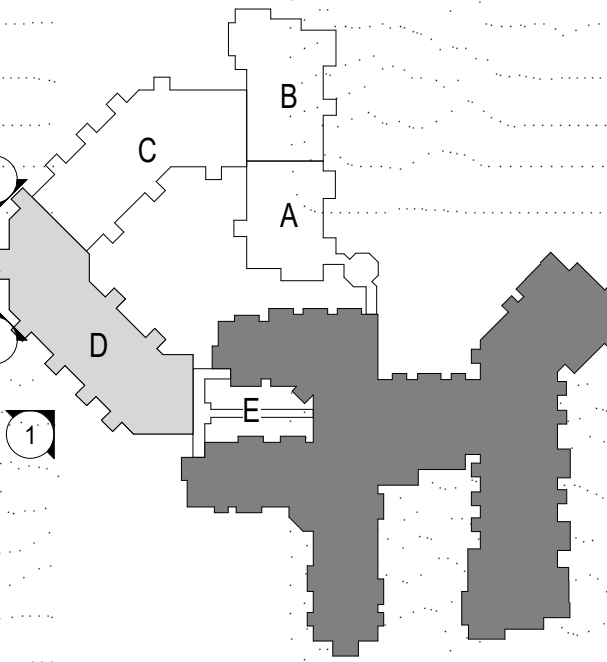
2
A3.5 **EXTERIOR ELEVATION- AREA C (W)**
1/8" = 1'-0"



1
A3.5 **EXTERIOR ELEVATION- AREA D (SW)**
1/8" = 1'-0"

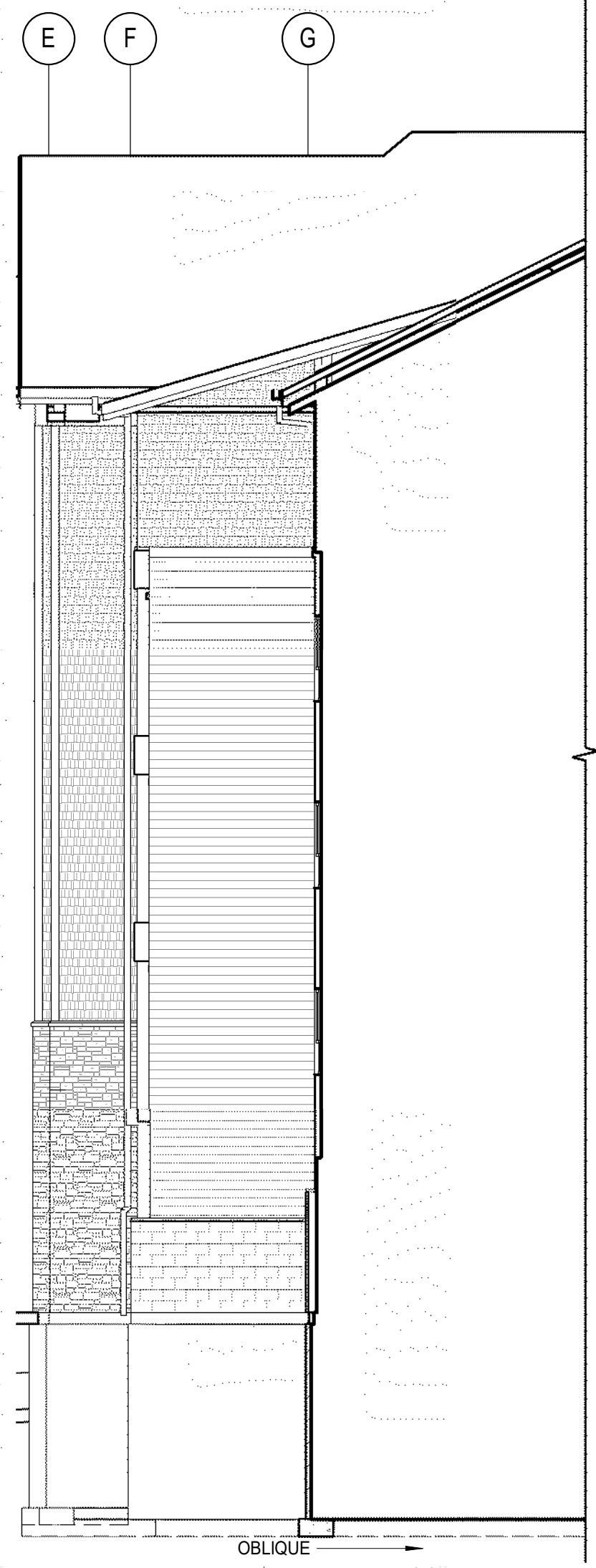
Keynote Legend	
1	ASPHALT SHINGLES - CLASS 'A'
8	OUTLINE OF FOUNDATION
10	VINYL CLAD WINDOWS
18	FIBER CEMENTBOARD SHINGLE SIDING
19	FIBER CEMENTBOARD LAP SIDING - COLOR TBD
20	1X6 FIBER CEMENT TRIM - PT. COLOR TBD
22	1X10 FIBER CEMENT TRIM - PT. COLOR TBD
24	MANUFACTURED STONE VENEER
25	MANUFACTURED STONE SILL
26	LOUVER - PT. COLOR TBD
28	DECORATIVE RAILING SYSTEM
31	COLORLED ROCKFACE CMU

CITY SUBMISSION
CUP & PDD
3/2/2018



EXTERIOR ELEVATIONS- AREA D

Revision	Description



Truss Bearing
153'-4 5/8"
Fifth Level
144'-4 1/4"
Fourth Level
133'-6 3/8"
Third Level
122'-8 1/2"
Second Level
111'-10 5/8"
First Level
100'-0"
Lower Level
88'-0"

3
A3.6 **BUMP ELEVATION- AREA B (S)**
1/8" = 1'-0"



Keynote Legend

1	ASPHALT SHINGLES - CLASS 'A'
3	PREFIN. METAL FASCIA AND SOFFIT
8	OUTLINE OF FOUNDATION
10	VINYL CLAD WINDOWS
11	CEMENT BD. WRAPPED COLUMN
18	FIBER CEMENTBOARD SHINGLE SIDING
19	FIBER CEMENTBOARD LAP SIDING - COLOR TBD
20	1X6 FIBER CEMENT TRIM - PT. COLOR TBD
25	MANUFACTURED STONE SILL
28	DECORATIVE RAILING SYSTEM
31	COLORLED ROCKFACE CMU
32	SEGMENTED COLORED BLOCK RETAINING WALL SYSTEM
35	INSULATED OVER HEAD DOOR

2
A3.6 **EXTERIOR ELEVATION- AREA C (N)**
1/8" = 1'-0"



1
A3.6 **EXTERIOR ELEVATION- AREA C (NW)**
1/8" = 1'-0"

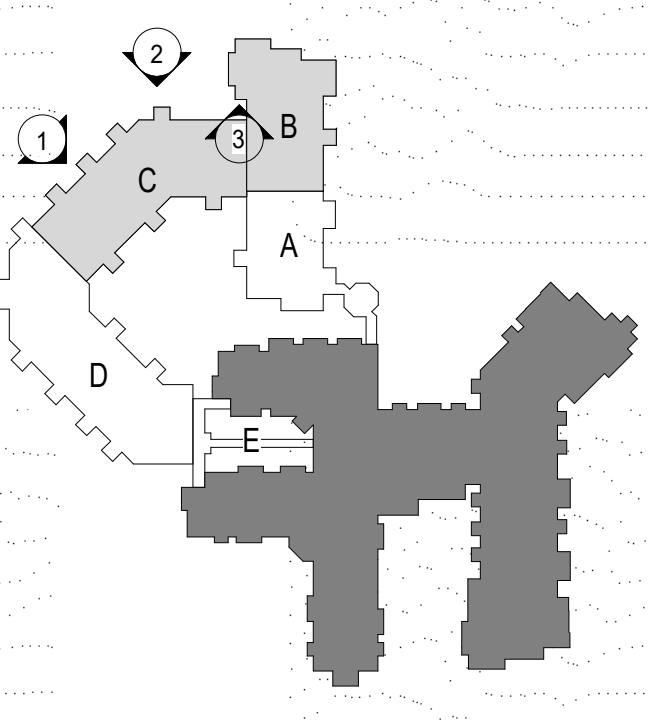


POPE ASSOCIATES, INC.
1295 BANDANA BLVD N, SUITE 200
ST. PAUL, MN 55108-2735
(651) 642-9200 | FAX (651) 642-1101
www.popearch.com

BETHANY
LUTHERAN HOMES
A GUNDERSEN HEALTH SYSTEM AFFILIATE

**EAGLE CREST
SOUTH ADDITION
PHASE 2
LA CROSSE, WI**

**CITY SUBMISSION
CUP & PDD
3/2/2018**



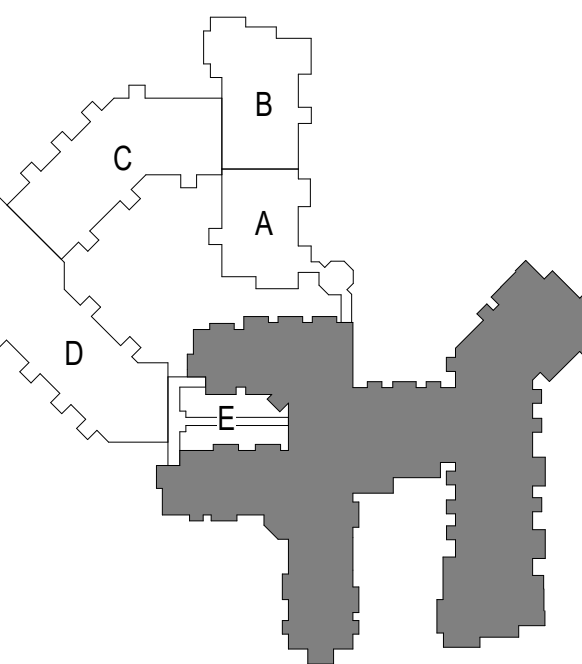
**EXTERIOR
ELEVATIONS- AREAS
B & C**

Notes on Sheets:

Revision No. 12728-17031
Drawn by MEJ
Checked by TP

SHEET

A3.6

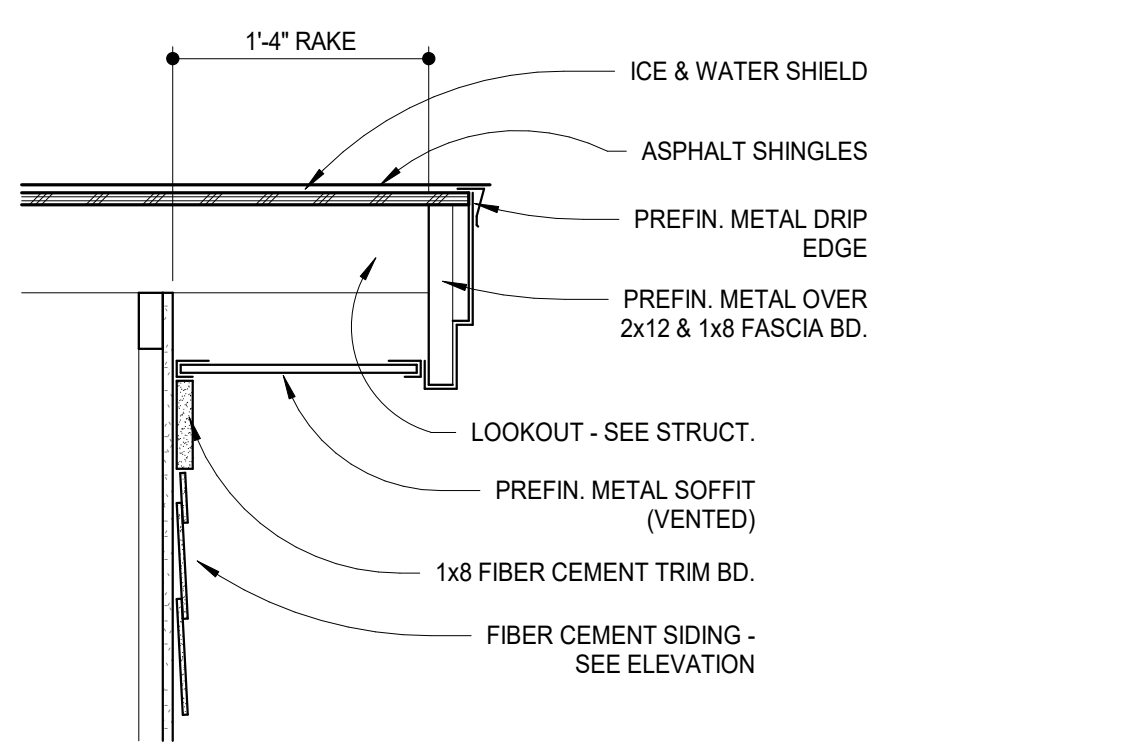


Issue and Revisions:

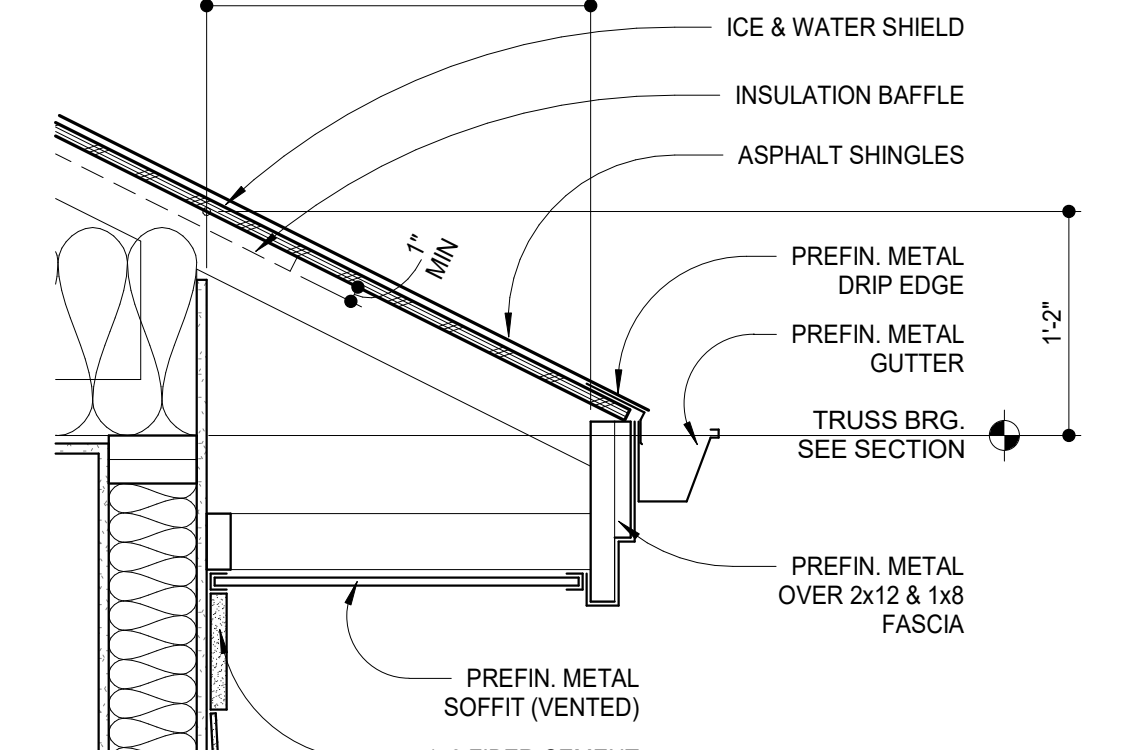
NO.	DESCRIPTION

ROOF PLAN NOTES

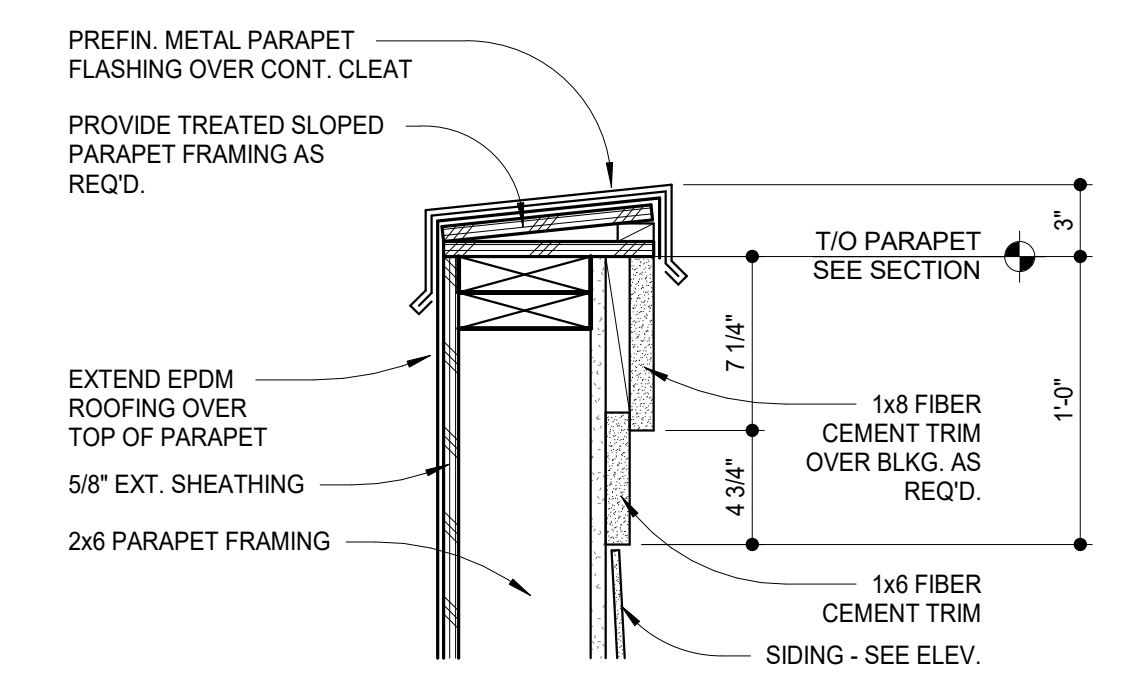
A. G.C. TO COORDINATE STORMWATER OUTFLOW WITH CIVIL AND OVERALL SITE PLAN.
B. ICE AND WATERSHIELD TO BE INSTALLED PER MANUFACTURERS SPEC. AT ALL EXTERIOR WALLS 12 COURSES AT EAVES AND 1 COURSE MIN. AT VALLEYS; ALLOW MINIMUM 2'-0" TO THE INSIDE OF CONSTRUCTION.
C. FLASH ALL ROOF BREAKS WEATHER TIGHT.
D. ROOF SADDLES TO BE MINIMUM 4:12 PITCH.
E. ALL TYPICAL OVERHANGS TO BE 24" UN.O. & GABLE RAKES TO BE 16" U.N.O.
F. TAPERED INSULATION: MIN. THICKNESS = 2". MAX. SLOPE = 14:1 FT.
G. VERIFY LOCATION OF MECHANICAL EQUIPMENT & WALKWAY PADS WITH MECHANICAL.
H. SEE EXTERIOR ELEVATIONS & CIVIL FOR DOWNSPOUT LOCATIONS.



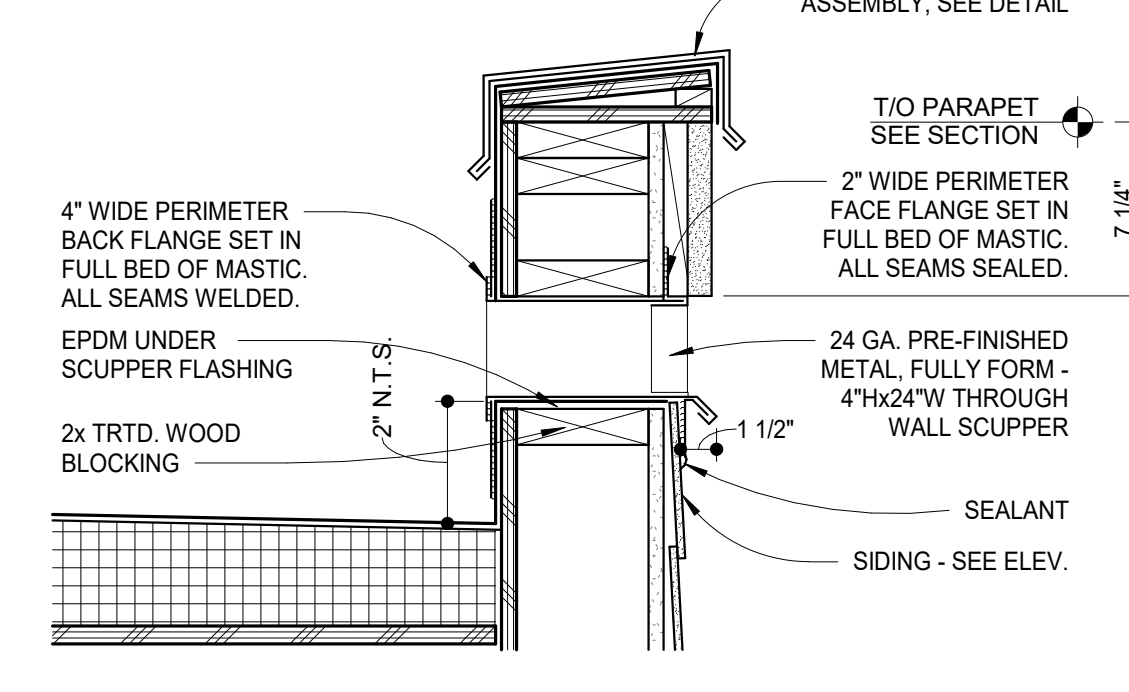
9
A4.1 **DETAIL @ TYPICAL RAKE**
1" = 1'-0"



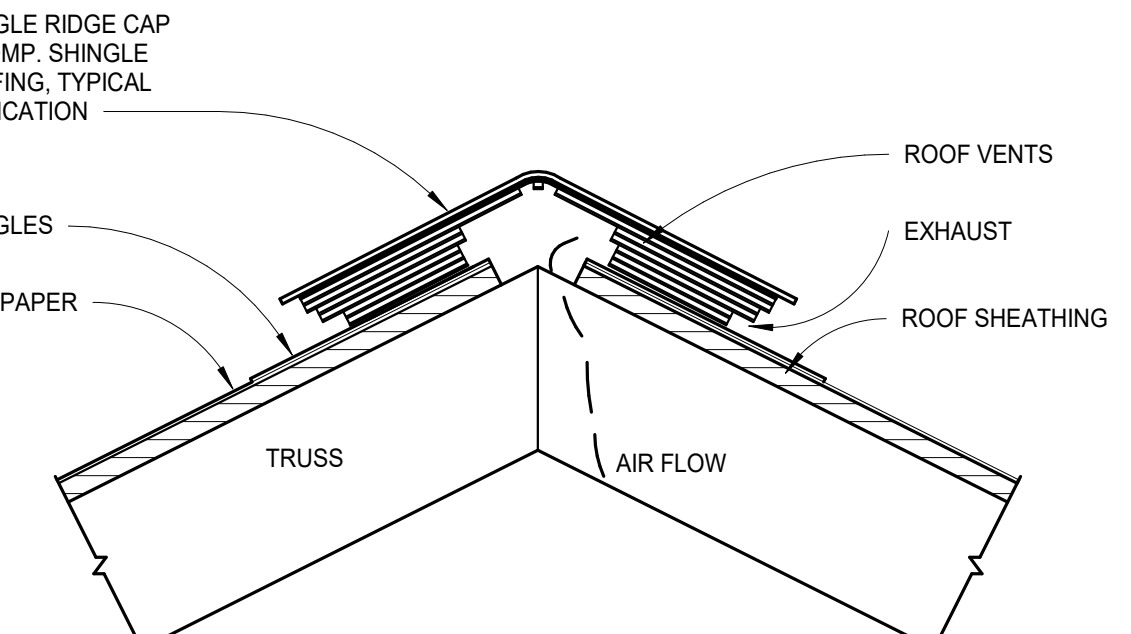
8
A4.1 **DETAIL @ TYPICAL OVERHANG**
1" = 1'-0"



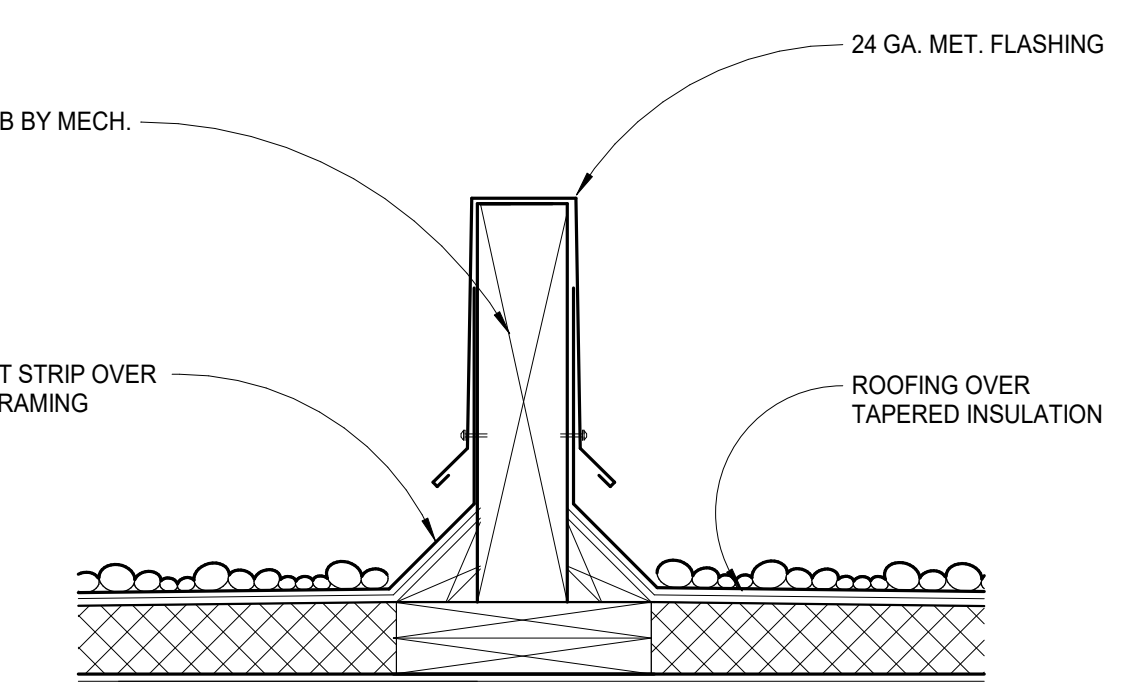
7
A4.1 **PARAPET DETAIL**
1 1/2" = 1'-0"



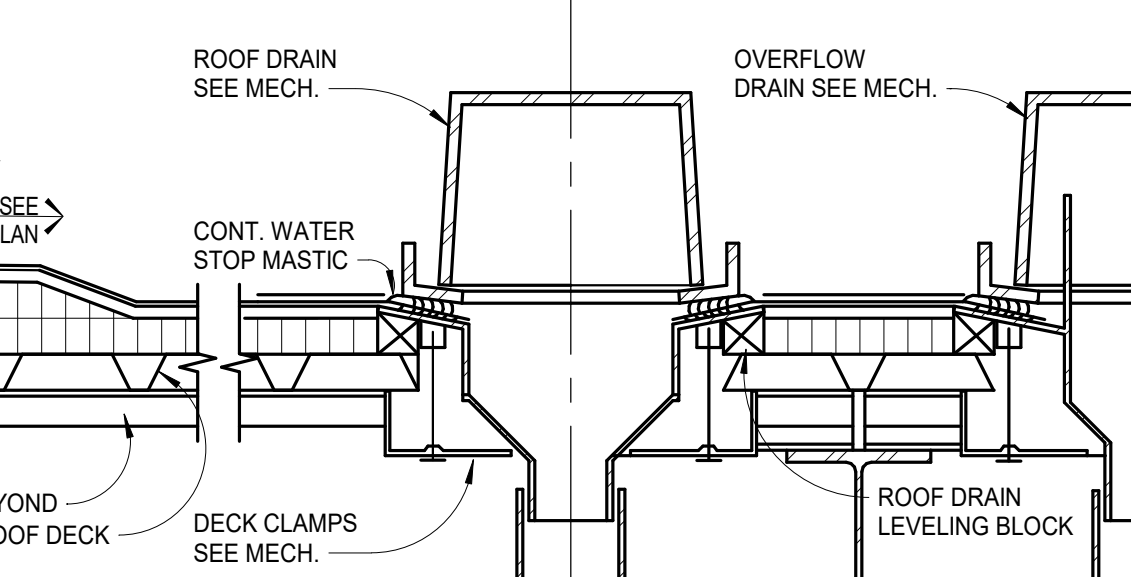
6
A4.1 **OVERFLOW SCUPPER DETAIL**
1 1/2" = 1'-0"



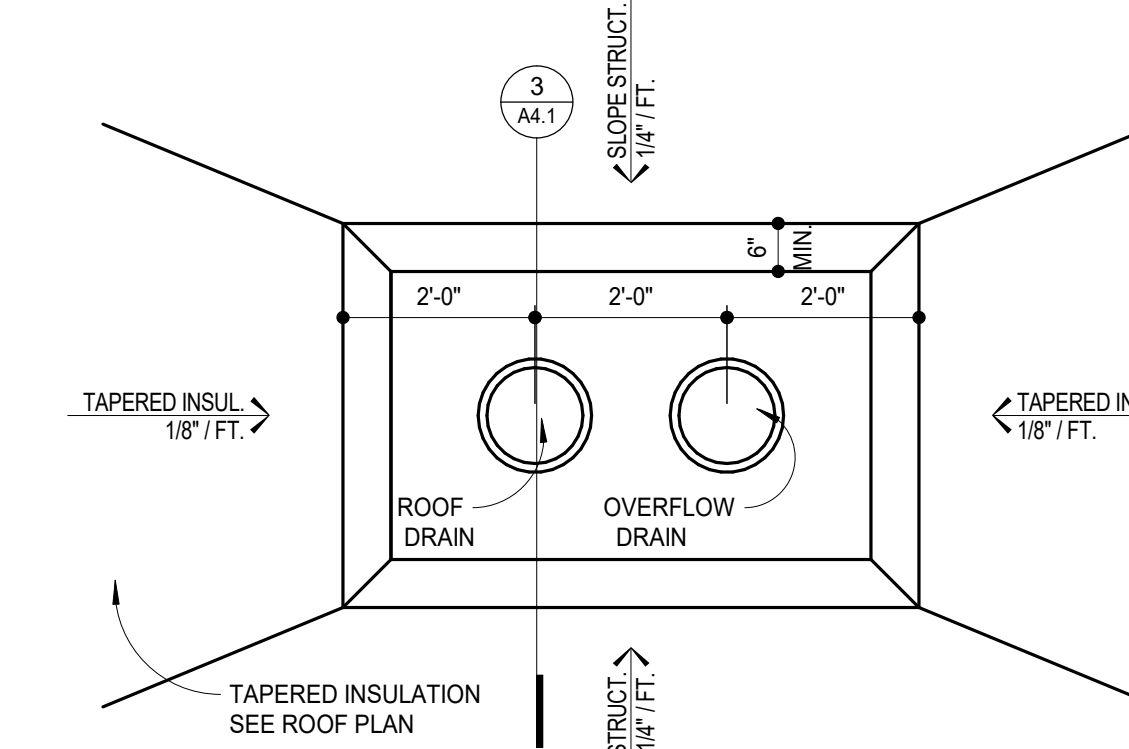
5
A4.1 **RIDGE VENT DETAIL**
3/4" = 1'-0"



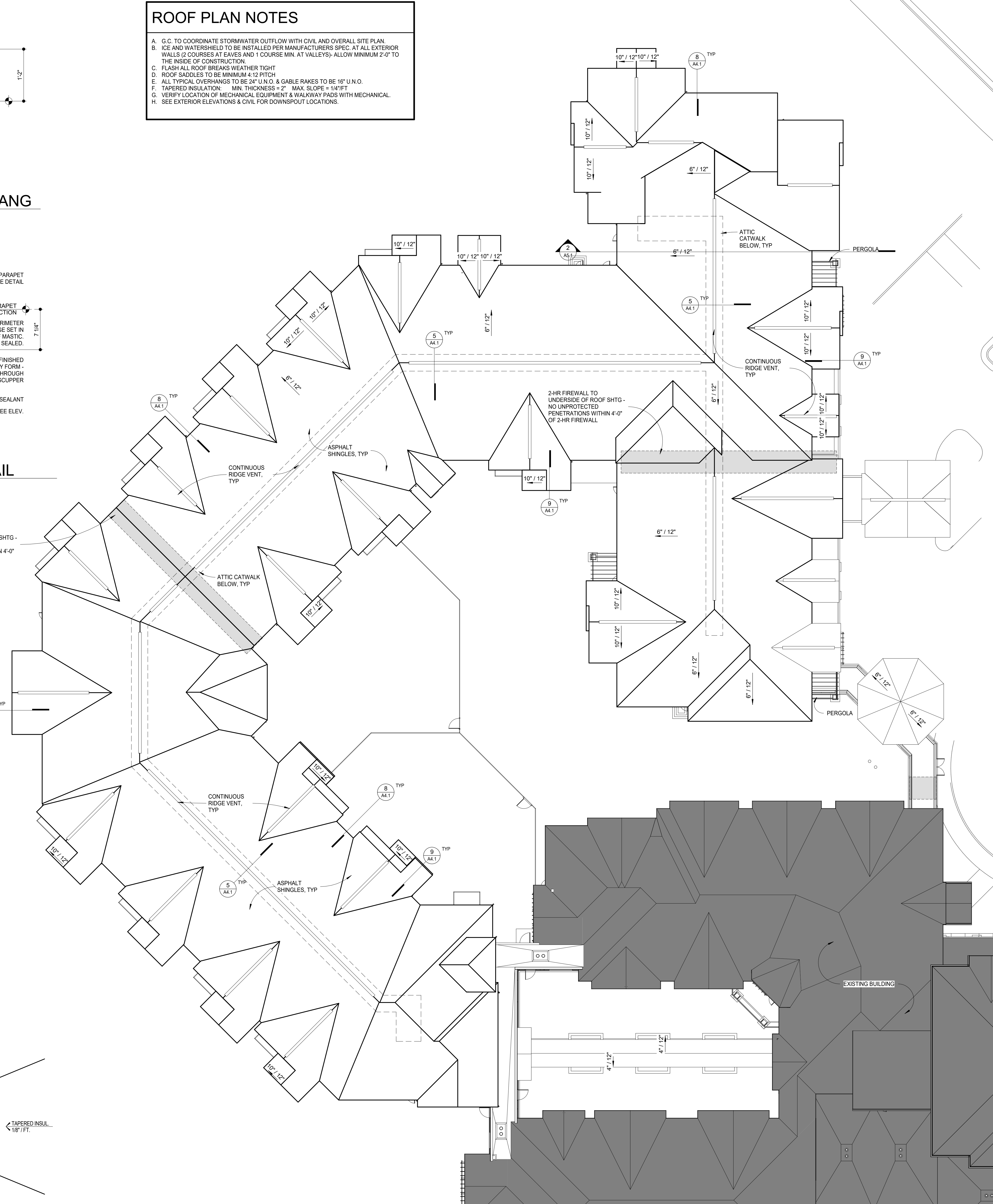
4
A4.1 **MECH CURB DETAIL**
1 1/2" = 1'-0"



3
A4.1 **ROOF DRAIN SECTION DETAIL**
1 1/2" = 1'-0"



2
A4.1 **ROOF DRAIN DETAIL**
1/2" = 1'-0"



1
A4.1 **OVERALL ROOF PLAN**
1/16" = 1'-0"

