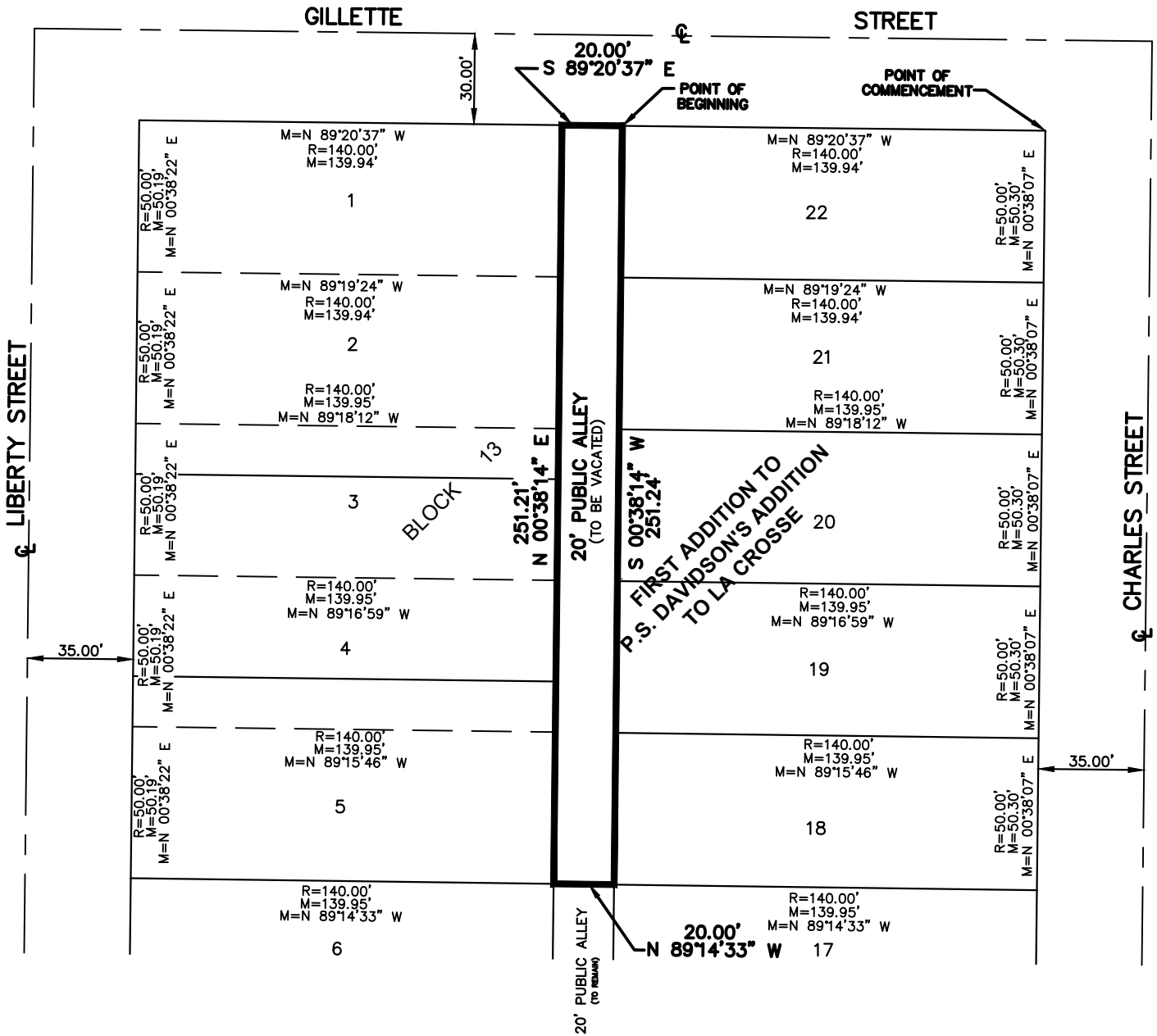
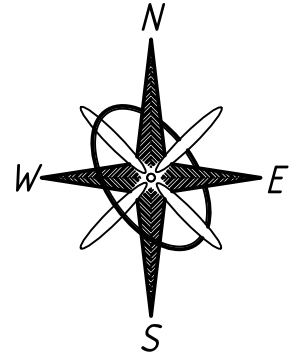


EXHIBIT B

PROPOSED PARTIAL ALLEY VACATION

CONTAINING AN AREA OF 5,024.5 SQ.FT.



NE 1/4 - SW 1/4 SEC. 20 T16N R7W

PAGE 2 OF 2



WSP USA, Inc.
 221 N. LaSalle Street, Suite 300
 Chicago, Illinois 60601-1211
 Phone (312) 577-3300
 Fax (312) 577-3526
 WSP.com

CITY OF LA CROSSE FIRE DEPARTMENT

400 LA CROSSE STREET, LA CROSSE, WI 54601

LA CROSSE FIRE STATION #4

DRAWN BY: WAM	DATE: 09/23/2022	SCALE: N.T.S.	PROJECT MANAGER: SB	PROJECT: 7786.01
------------------	---------------------	------------------	------------------------	---------------------