



PRELIMINARY NOT FOR CONSTRUCTION PRELIMINARY NOT FOR CONSTRUCTION

SYMBOL LEGEND

Table with columns for EXISTING and PROPOSED symbols and their corresponding descriptions (e.g., STORM MANHOLE, STORM CATCH BASIN, etc.).

LINETYPE LEGEND

Table with columns for EXISTING and PROPOSED linetypes and their corresponding descriptions (e.g., STORM DRAIN, SANITARY SEWER, WATER MAIN, etc.).

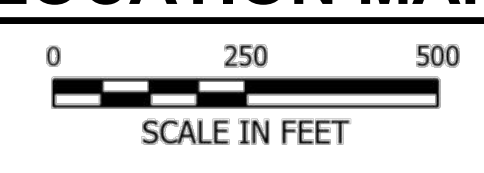
NOTE: CONTRACTOR SHALL FIELD VERIFY THE LOCATIONS OF ALL EXISTING UTILITIES.

ABBREVIATIONS table listing various abbreviations and their full names (e.g., ADA AMERICANS WITH DISABILITIES ACT, ADD ADDENDUM, etc.).



PROJECT LOCATION LA CROSSE

LOCATION MAP



PROJECT GENERAL NOTES

- 1. ALL WORK SHALL CONFORM TO THE CONTRACT DOCUMENTS, WHICH INCLUDE...
2. CONTRACT DOCUMENTS SHALL BE ISSUED TO ALL SUBCONTRACTORS BY THE GENERAL CONTRACTOR...
3. WRITTEN DIMENSIONS TAKE PRECEDENCE OVER SCALED DIMENSIONS...
4. FIELD VERIFY ALL EXISTING CONDITIONS AND DIMENSIONS...
5. DETAILS SHOWN ARE INTENDED TO BE INDICATIVE OF THE PROFILES AND TYPE OF DETAILING REQUIRED...
6. ALL MANUFACTURED ARTICLES, MATERIALS, AND EQUIPMENT SHALL BE APPLIED, INSTALLED, CONNECTED, ERECTED, CLEANED, AND CONDITIONED...
7. ALL DISSIMILAR METALS SHALL BE EFFECTIVELY ISOLATED FROM EACH OTHER TO AVOID GALVANIC CORROSION...
8. THE LOCATION AND TYPE OF ALL EXISTING UTILITIES SHOWN ON THE PLANS ARE FOR GENERAL INFORMATION ONLY...
9. THE CONTRACTOR IS TO CONTACT 'DIGGERS HOTLINE' FOR UTILITY LOCATIONS A MINIMUM OF 3 BUSINESS DAYS PRIOR TO ANY EXCAVATION / CONSTRUCTION...



SPECIFICATIONS REFERENCE

ALL CONSTRUCTION SHALL COMPLY WITH THE CITY OF LACROSSE STANDARD SPECIFICATIONS, CURRENT EDITION, WISDOT STANDARD SPECIFICATIONS, 2024 EDITION, WISDOT CONSTRUCTION AND MATERIALS MANUAL, CURRENT EDITION, WISCONSIN DEPARTMENT OF SAFETY AND PROFESSIONAL SERVICES STATE PLUMBING CODE, CURRENT EDITION, AND STANDARD SPECIFICATION FOR SEWER & WATER CONSTRUCTION IN WISCONSIN, 6th EDITION, UNLESS DIRECTED OTHERWISE.

PROJECT DATUM

HORIZONTAL COORDINATES HAVE BEEN REFERENCED TO THE NORTH AMERICAN DATUM OF 1983 (NAD83), 2011 ADJUSTMENT (NAD83(2011)) ON THE LACROSSE COUNTY COORDINATE SYSTEM, IN U.S. SURVEY FEET.

TOPOGRAPHIC SURVEY

THIS PROJECT'S TOPOGRAPHIC SURVEY CONSISTS OF DATA COLLECTED IN FEBRUARY 2025 BY ISG INC.

CIVIL SHEET INDEX

Table listing sheet numbers and titles: C0-10 SITE DATA, C0-20 SITE DETAILS, C0-21 SITE DETAILS, C0-22 SITE DETAILS, C0-23 SITE DETAILS, C2-10 EXISTING SITE AND REMOVAL PLAN, C3-10 OVERALL SITE PLAN, C3-20 SITE UTILITY PLAN, C4-10 GRADING AND EROSION CONTROL PLAN.

SHEET NOT VALID UNLESS THIS TEXT IS COLOR.

PROJECT: BADGER WEST WEST DEVELOPMENT LACROSSE WISCONSIN

REVISION SCHEDULE table with columns for DATE, DESCRIPTION, and BY.

Table with project details: PROJECT NO. 25-32213, FILE NAME 32213-C0-GENERAL, DRAWN BY DT, DESIGNED BY KR, REVIEWED BY KR, ORIGINAL ISSUE DATE, CLIENT PROJECT NO.

TITLE

SITE DATA

Horizontal coordinates have been referenced to the North American Datum of 1983 (NAD83), 2011 Adjustment (NAD83(2011)) on the Lacrosse County Coordinate System, in U.S. Survey Feet.

SHEET C0-10

### Curb Ramps D-10-1

#### Construction Guidance

**General Construction:**

- Curb ramps shall extend at a constant width from landing to back of curb (flares or wings not permitted)
- Curb ramps shall be colinear with sidewalks
- Curb ramps shall maintain alignment with back of sidewalk
- Expansion joint material should be placed along back of curb and/or gutter and near the landing as directed by the engineer or technician

**Detectable Warning Surface (DWS):**

- Perpendicular DWS - placed transverse to the direction of pedestrian travel and as close to back of gutter as possible
- Radial DWS - must be used when the measurement taken along the longest side of the curb ramp from back of curb to the front edge of the DWS exceeds 5' in length (See detail)
- Rail Crossing DWS - shall be placed directly behind gate if present. When a gate is not present DWS shall not be less than 6 feet or more than 15 feet from rail
- Joints are not permitted to originate / terminate at a DWS

**Grades/Slopes:**

- Landings must be at or less than 2% by 2% grade/slope
- Ramps must be less than 8.3% longitudinal grade, and at or less than 2% cross slope
- A longitudinal grade greater than 5% can be maintained for not more than 30 feet

**Widths/Openings:**

- Ramps shall match widths of landing
- Ramps shall be constant width, extending to back of gutter
- Ramps may be narrower than curb openings
- DWS in ramps shall be edge-to-edge, with a 1" maximum border
- Curb tapers may only be installed when adjacent to turf
- Grade of ramp shall be constant from landing to flowline of gutter
- Vertical curb faces shall be installed when adjacent to hardscape surface and pedestrian curb

**Triangular / "Pie" Area Between Ramps:**

- If the pie measures greater than 10 square feet, the area must be replaced with turf
- If the pie measures less than 10 square feet, the area must be poured in concrete

**Detectable Warning Surface (DWS)**

**Grades/Slopes:**

- ROW: 0% - 8.3% Max. Grade
- ROW: 2% Max.
- TURF: 2% Max.
- TURF: 8.3% Maximum
- TURF: 2% Max.
- TURF: 8.3% Maximum
- TURF: 2% Max.
- TURF: 8.3% Maximum

**No Pedestrian Curb**

### Curb Ramps D-10-2

**Type 1**

**Type 2**

**Type 7**

### DRAWING NOT TO SCALE

#### SEWER PIPE JOINT MATERIALS

**DETAILS OF SEWER TRENCHES**

**DETAILS OF TYPE "A" CATCH BASIN CASTING**

**DETAILS OF TYPE "B" CATCH BASIN CASTING**

**DETAIL OF MANHOLE FRAME & COVER**

**DETAILS OF STANDARD MANHOLE FOR 30" PIPE OR SMALLER**

**DETAILS OF STANDARD MANHOLE FOR 36" PIPE OR LARGER**

**DETAILS OF DROP MANHOLE FOR 30" PIPE OR SMALLER**

**STORM SEWER DETAILS**

**D-2**

**ENGINEERING DEPT.**

**City of LaCrosse, Wis.**

### DRAWING NOT TO SCALE

#### SEWER PIPE JOINT MATERIALS

**DETAIL OF MANHOLE FRAME & COVER**

**DETAILS OF SEWER TRENCHES**

**DETAILS OF STANDARD MANHOLE FOR 30" PIPE OR SMALLER**

**DETAILS OF STANDARD MANHOLE FOR 36" PIPE OR LARGER**

**DETAILS OF DROP MANHOLE FOR 30" PIPE OR SMALLER**

**SANITARY SEWER DETAILS**

**D-6**

**ENGINEERING DEPT.**

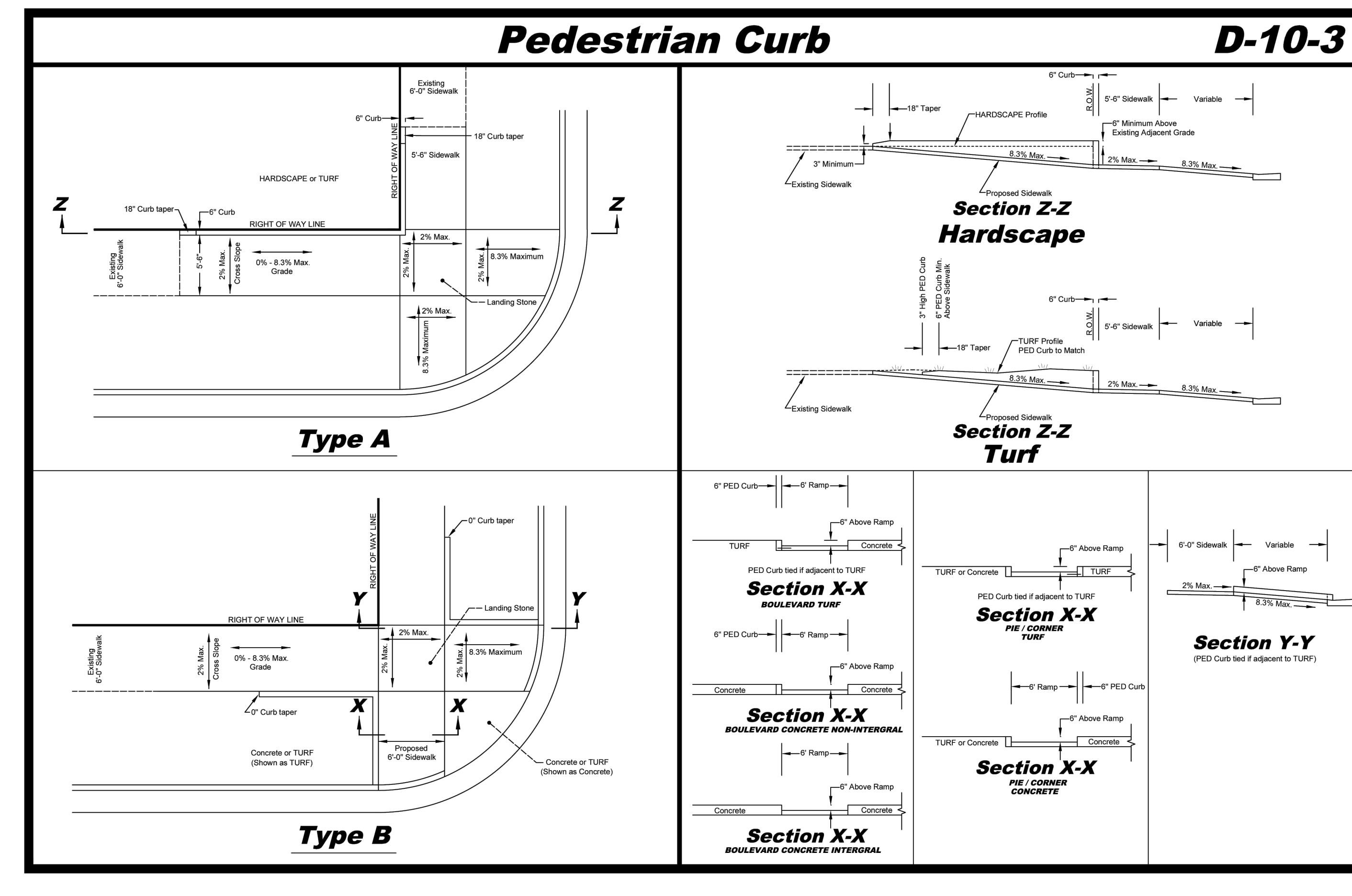
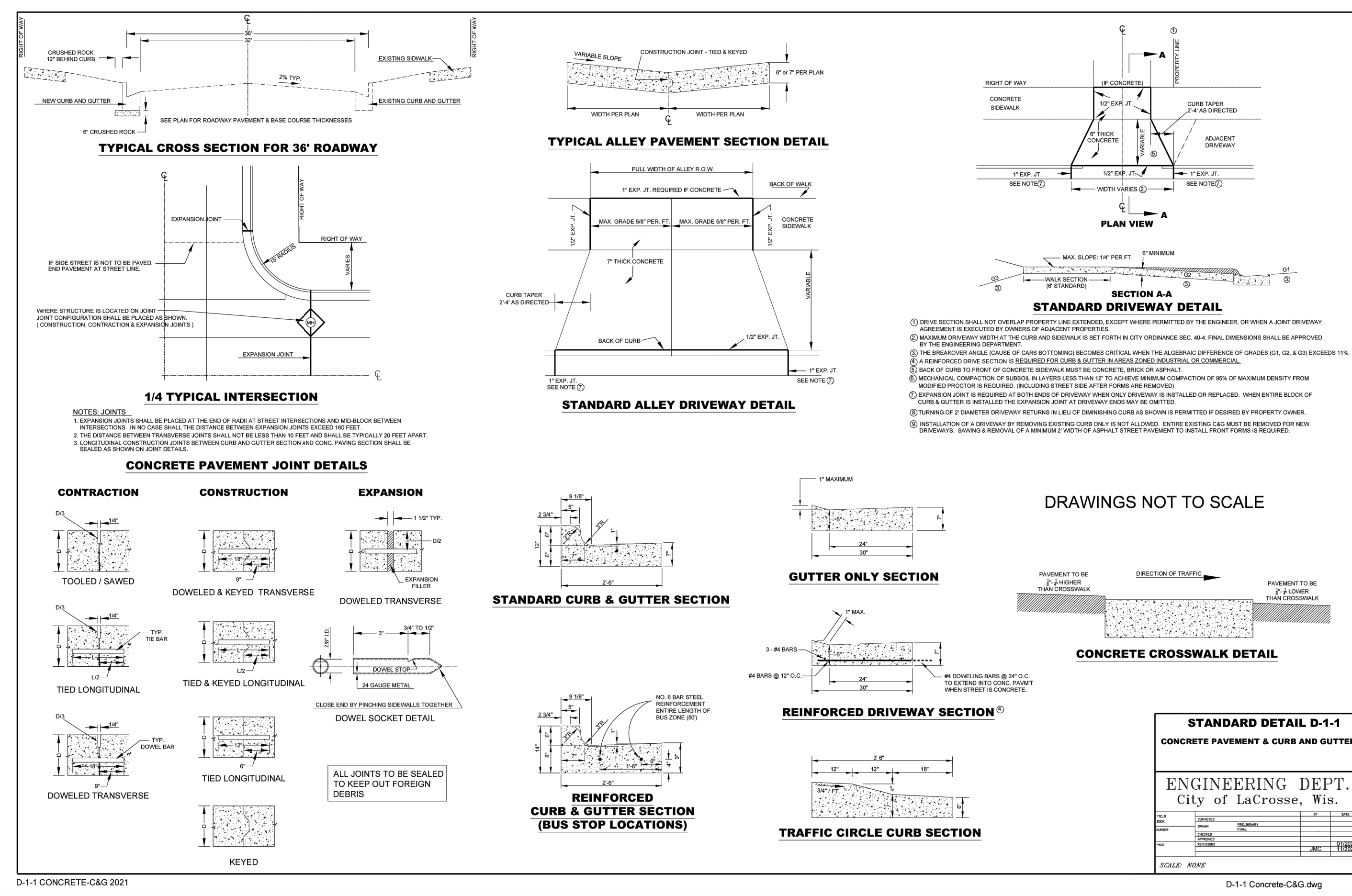
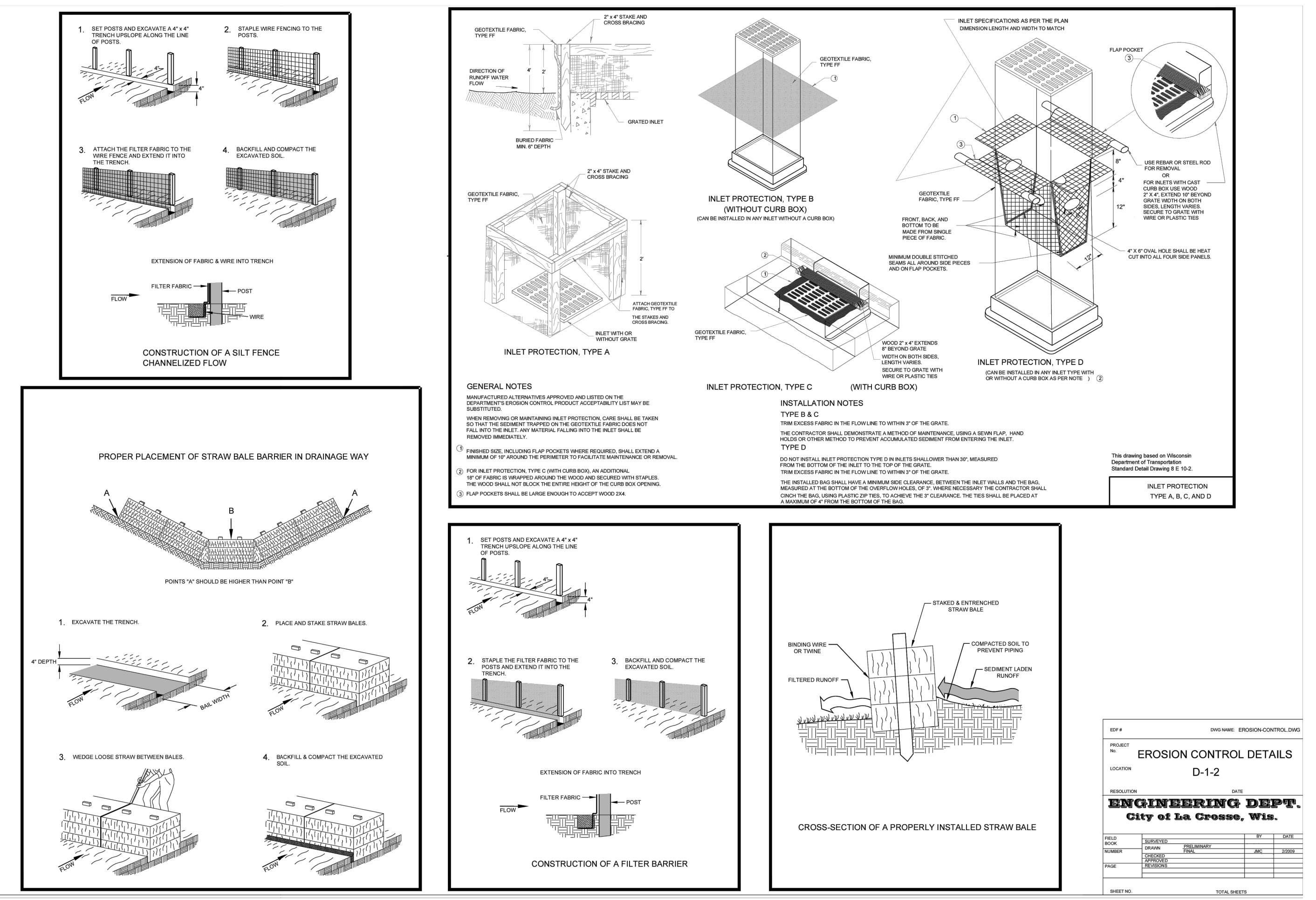
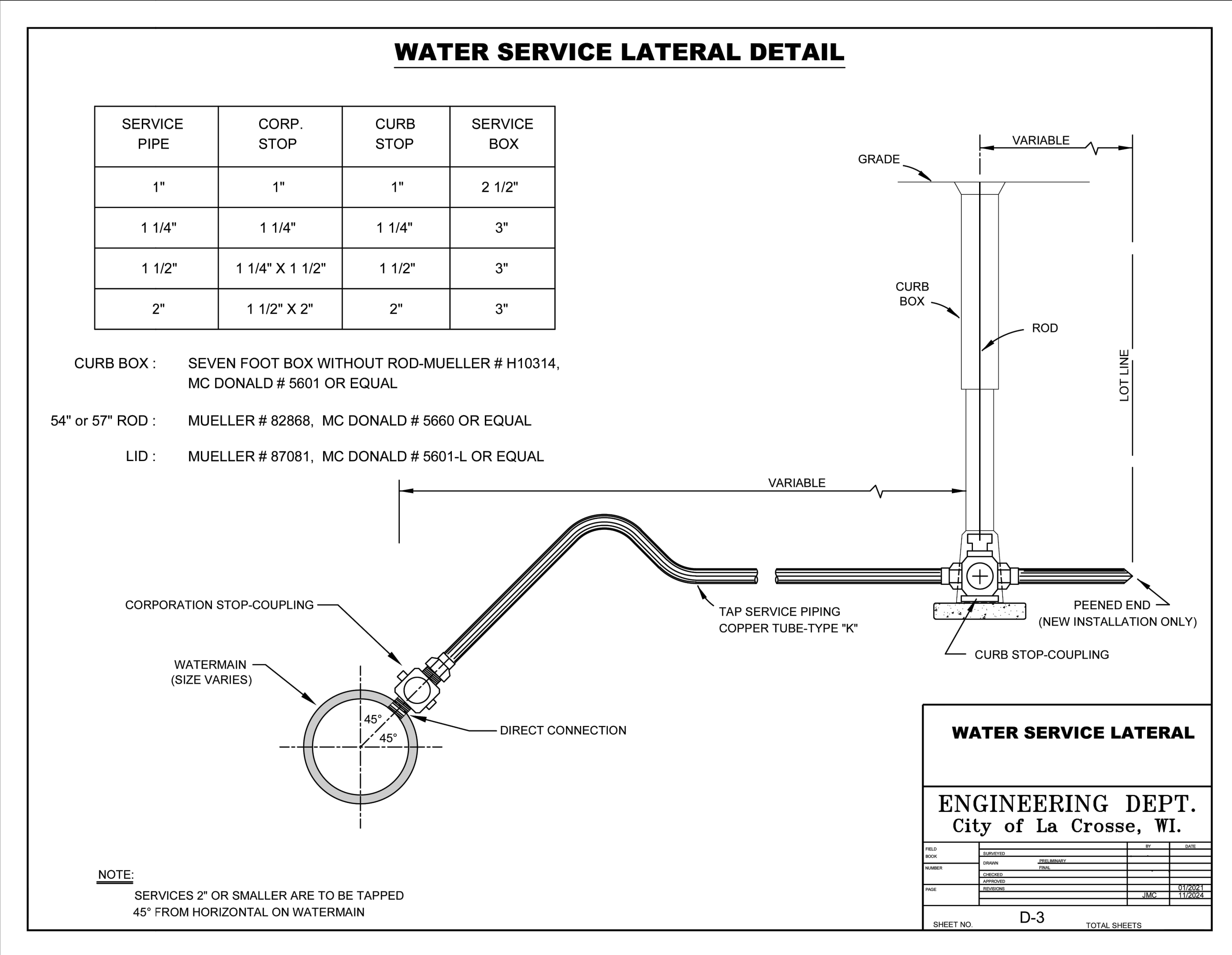
**City of LaCrosse, Wis.**

SHEET NOT VALID UNLESS THIS TEXT IS COLOR.

<b>PROJECT</b>		
<b>BADGER WEST WEST DEVELOPMENT</b>		
LACROSSE		WISCONSIN
REVISION SCHEDULE		
DATE	DESCRIPTION	BY

PROJECT NO.	25-32213
FILE NAME	32213-CO-DETAILS
DRAWN BY	DT
DESIGNED BY	KR
REVIEWED BY	KR
ORIGINAL ISSUE DATE	
CLIENT PROJECT NO.	

<b>TITLE</b>	
<b>SITE DETAILS</b>	
SHEET	



SHEET NOT VALID UNLESS THIS TEXT IS COLOR.

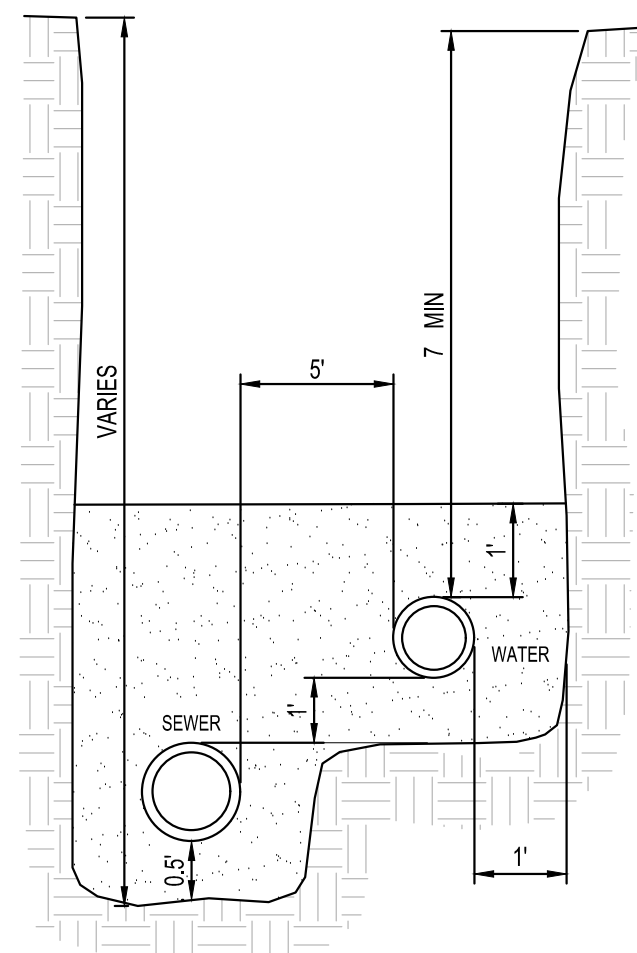
PROJECT  
**BADGER WEST WEST DEVELOPMENT**  
LACROSSE WISCONSIN

REVISION SCHEDULE		
DATE	DESCRIPTION	BY

PROJECT NO. 25-32213  
 FILE NAME 3213-CD-DETAILS  
 DRAWN BY DT  
 DESIGNED BY KR  
 REVIEWED BY KR  
 ORIGINAL ISSUE DATE 11/11/2025  
 CLIENT PROJECT NO. -

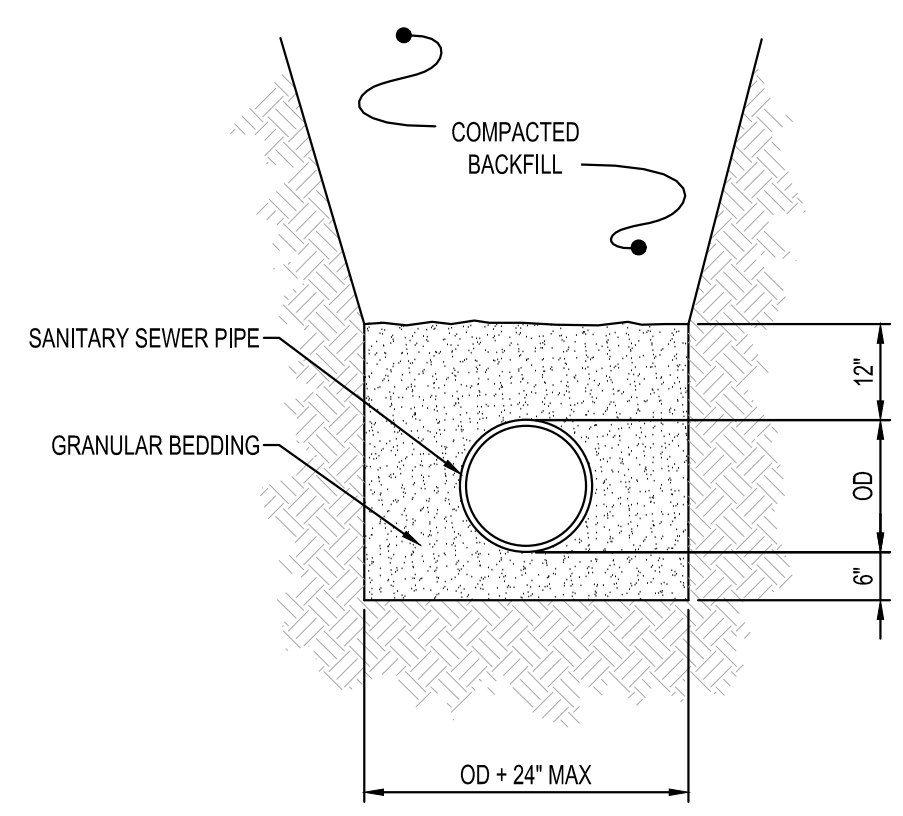
TITLE  
**SITE DETAILS**

SHEET  
**C0-21**



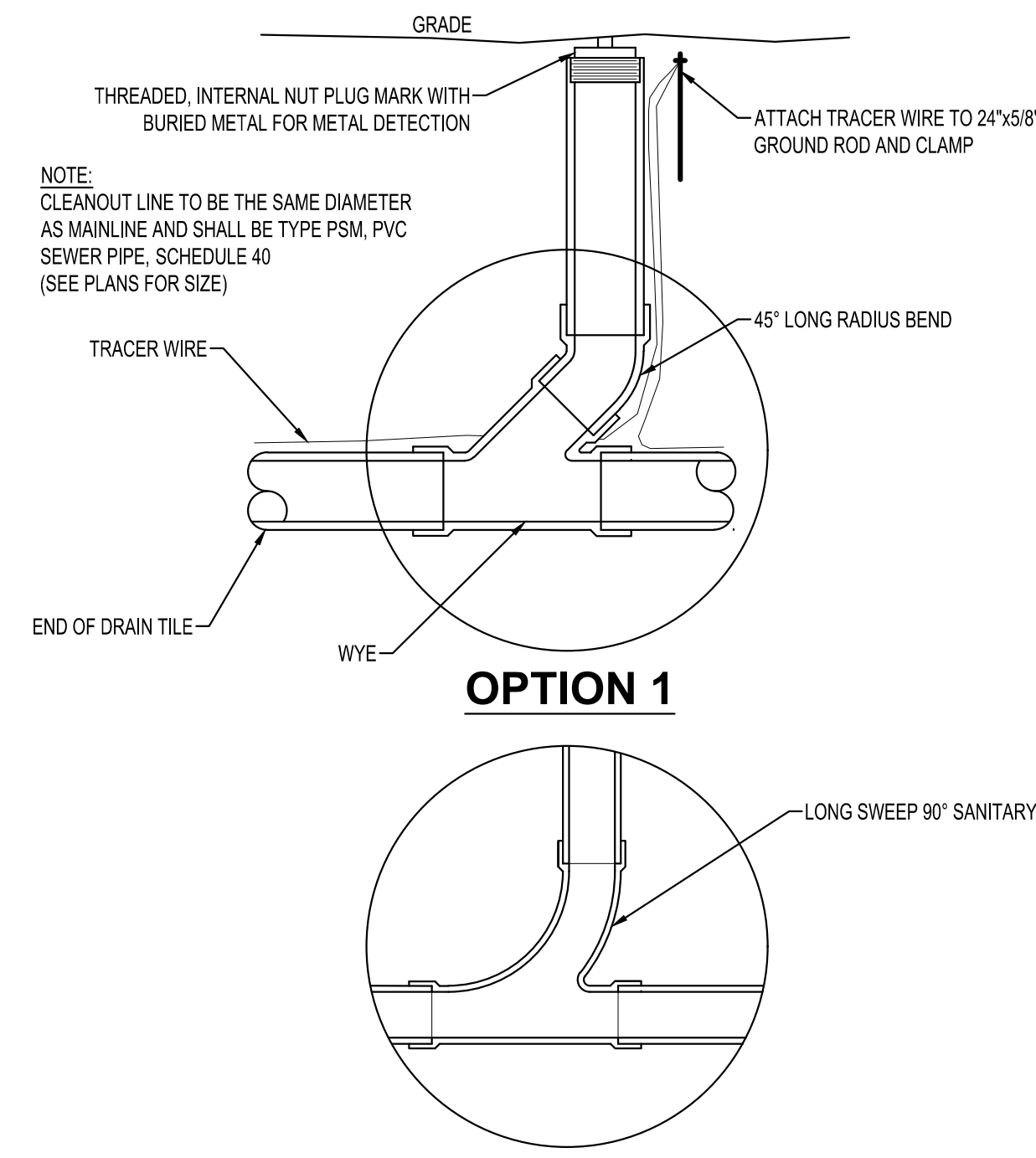
- NOTES:**
1. GRANULAR MATERIAL IN THIS ZONE SHALL BE INCIDENTAL TO PIPE INSTALLATION.
  2. IF THE SANITARY SEWER LOCATION IS ABOVE THE WATERMAIN, THE SANITARY SEWER PIPE MATERIAL SHALL BE WATERMAIN SPECIFICATION CLASS 160 SDR 26 PRESSURE PIPE.
  3. 5' OF SEPARATION IS STANDARD. SERVICES MAY BE CLOSER NEAR CONNECTION POINT IF NECESSARY DUE TO EXISTING SERVICE LOCATIONS.

**SANITARY & WATER SERVICES (SAME TRENCH)**  
NTS

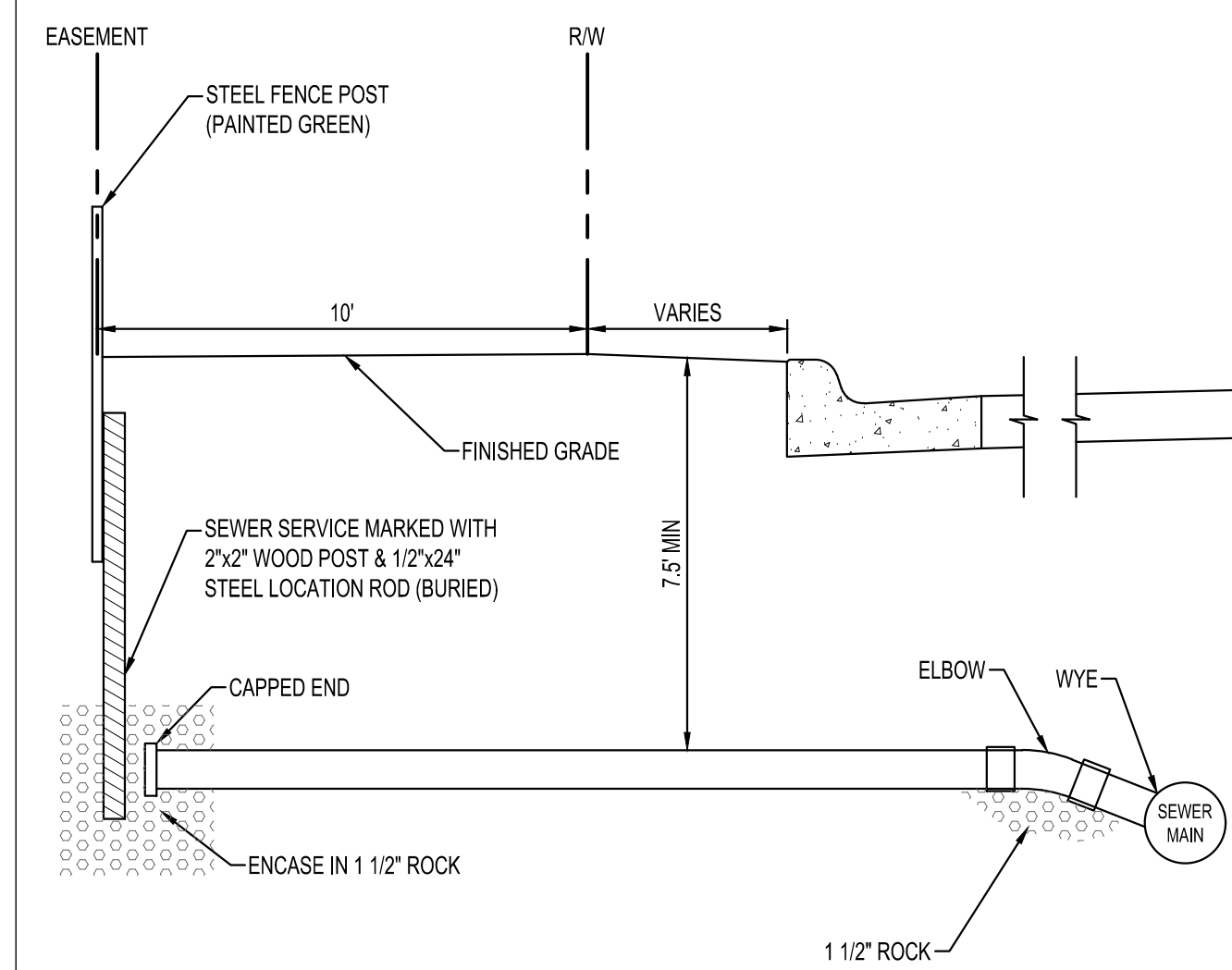


- NOTES:**
1. GRANULAR BEDDING AND ENCASEMENT FOR SANITARY SEWER PIPES SHALL BE INCIDENTAL TO CONSTRUCTION

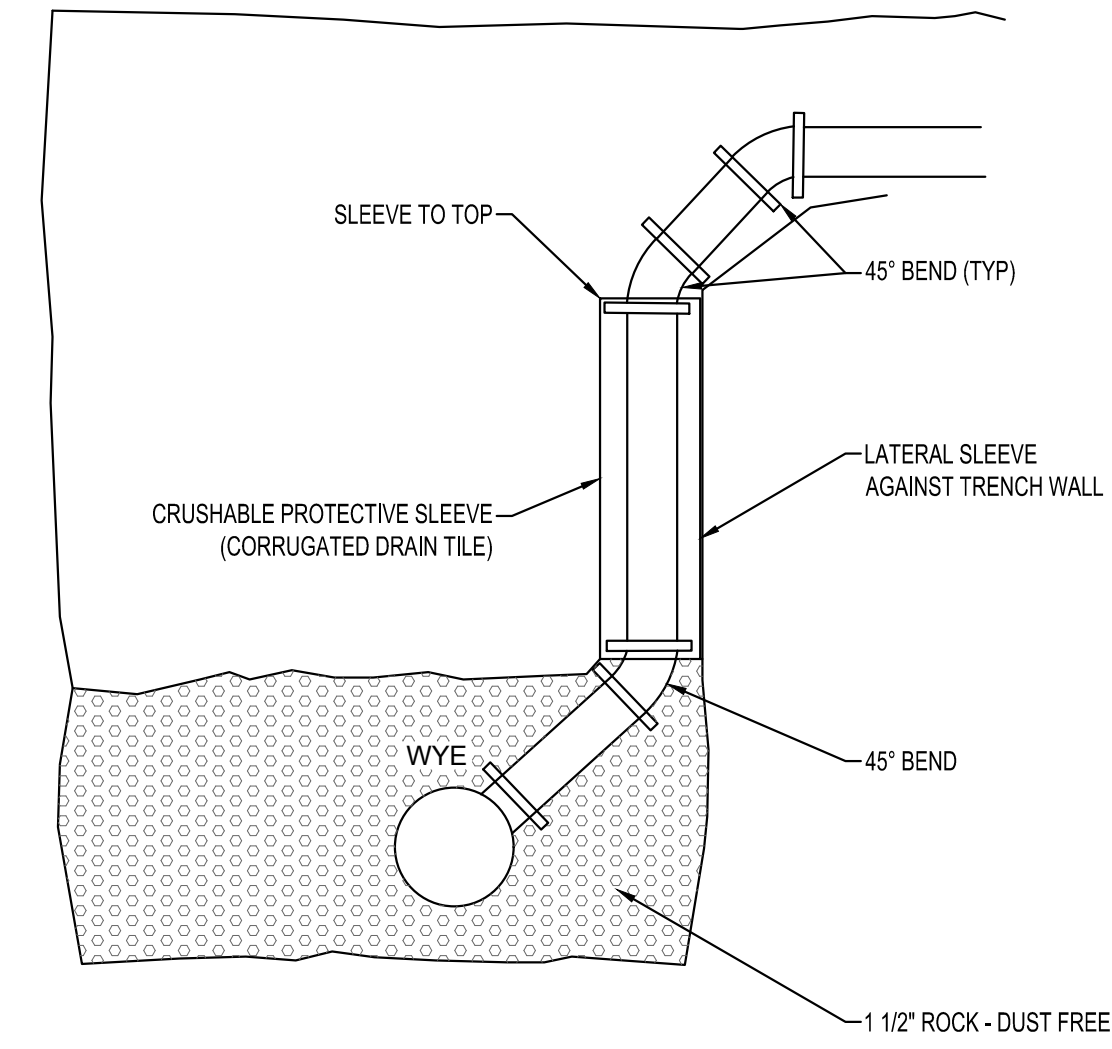
**PIPE BEDDING SANITARY SEWER**  
NTS



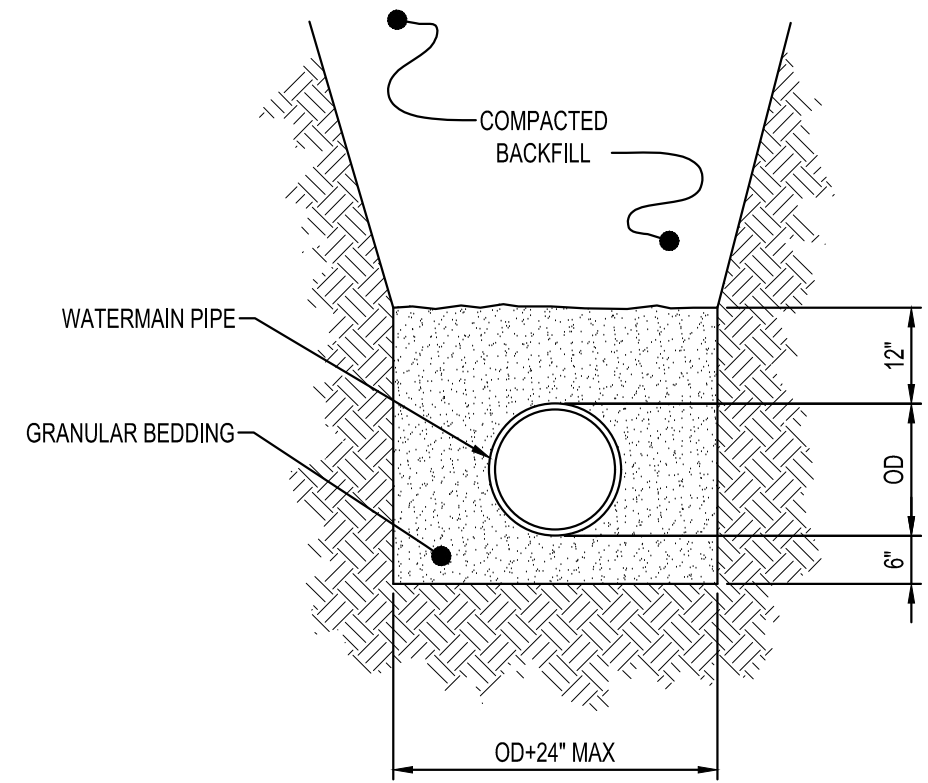
**OPTION 1**  
**OPTION 2**  
**SANITARY CLEANOUT**  
NTS



**RESIDENTIAL SANITARY SERVICE**  
NTS

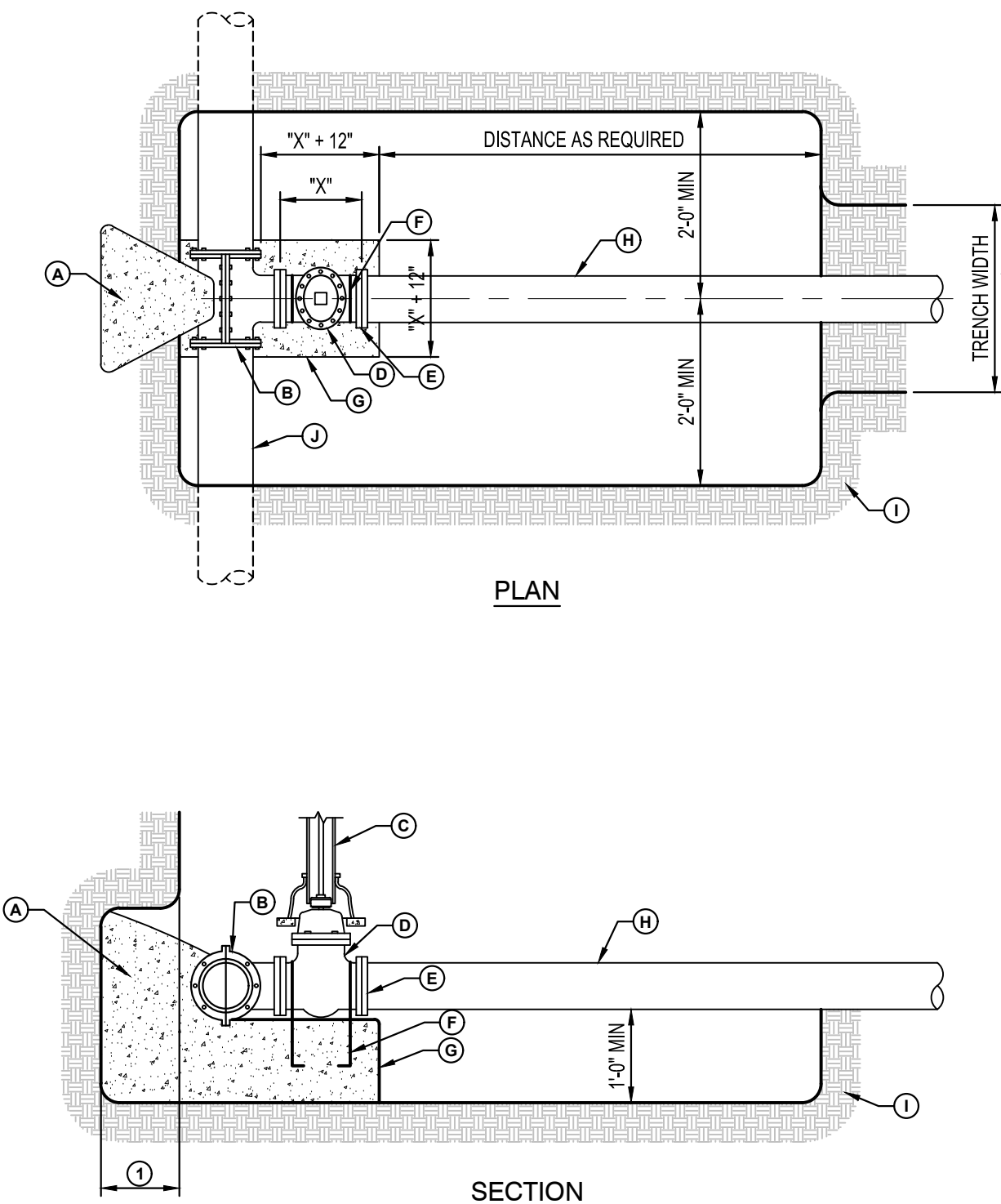


**DEEP SANITARY SERVICE**  
NTS



- NOTE:**
1. GRANULAR BEDDING AND ENCASEMENT FOR WATERMAIN PIPES SHALL BE INCIDENTAL TO CONSTRUCTION

**PIPE BEDDING WATERMAIN**  
NTS



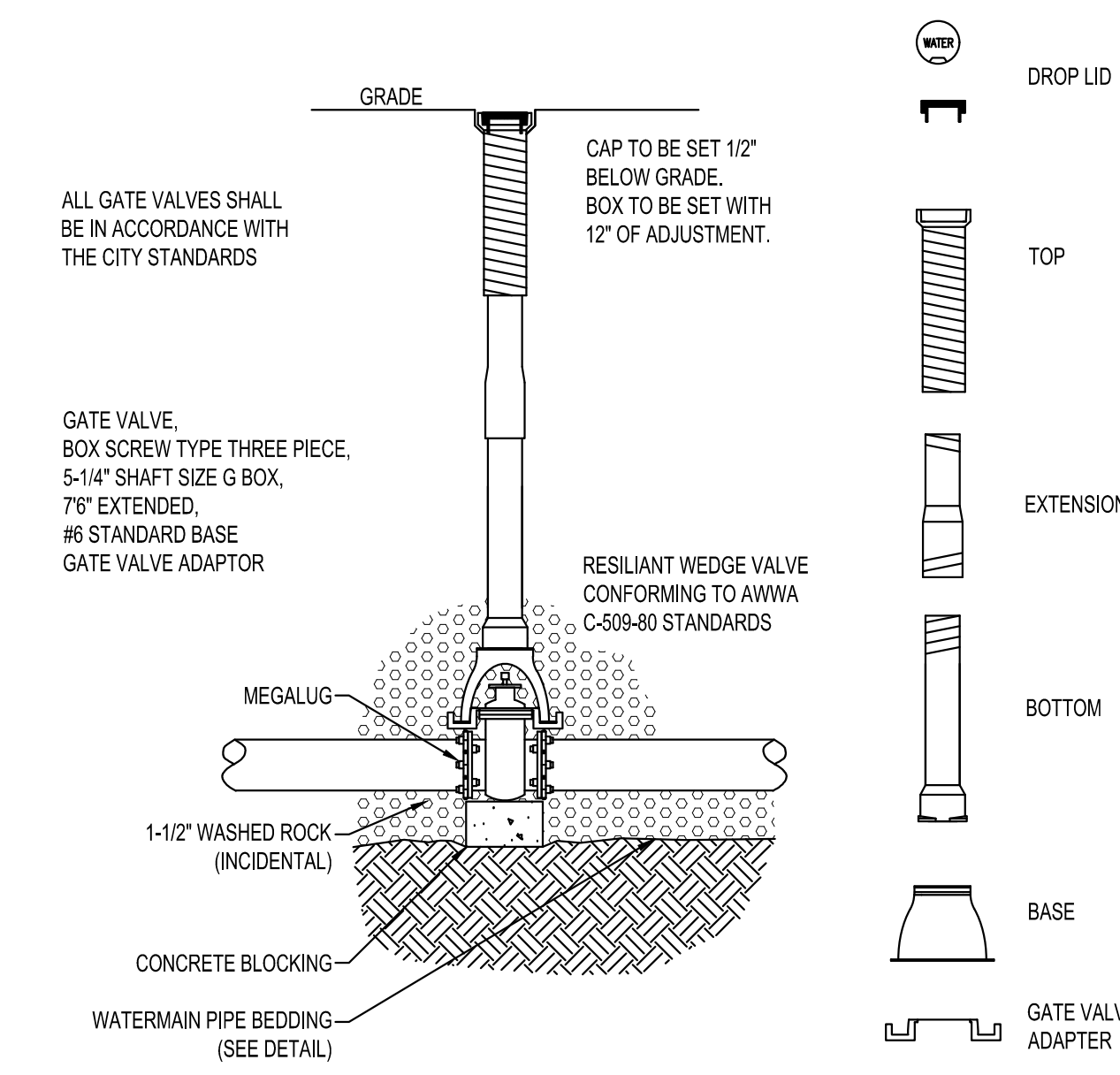
**TAPPING VALVE CONNECTION**  
NTS

**GENERAL NOTES**

1. THRUST BLOCKING SHALL EXTEND TO UNDISTURBED EARTH.
2. TAPPING SLEEVE SHALL BE 18\"/>

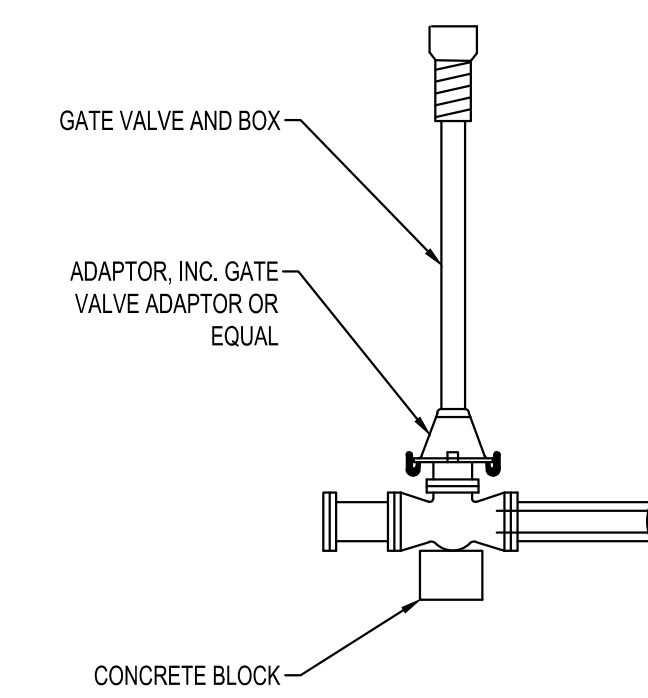
**CONSTRUCTION KEY NOTES**

- (A) CONCRETE THRUST BLOCKING
- (B) TAPPING SLEEVE
- (C) RISER INSTALLATION
- (D) TAPPING VALVE
- (E) VALVE ENDS FOR TYPE OF PIPE INSTALLED
- (F) 2-#5 REBAR HAIRPINS PAINT UNEMBEDDED PORTION OF BARS WITH 2 COATS OF COAL TAR EPOXY THEN COVER WITH 2\"/>
- (G) CONCRETE VALVE SUPPORT
- (H) NEW WATERMAIN TO BE INSTALLED
- (I) UNDISTURBED SOIL
- (J) EXISTING WATERMAIN TO BE TAPPED

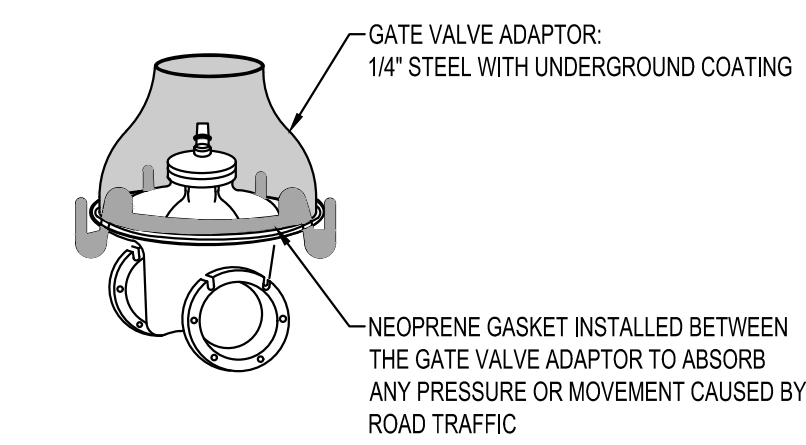


- NOTES:**
1. INSTALL TOP NUT EXTENDER TO 7\"/>

**TYPICAL GATE VALVE & BOX INSTALLATION**  
NTS



**GATE VALVE ADAPTOR**  
NTS



SHEET NOT VALID UNLESS THIS TEXT IS COLOR.

PROJECT  
**BADGER WEST WEST DEVELOPMENT**  
LACROSSE WISCONSIN

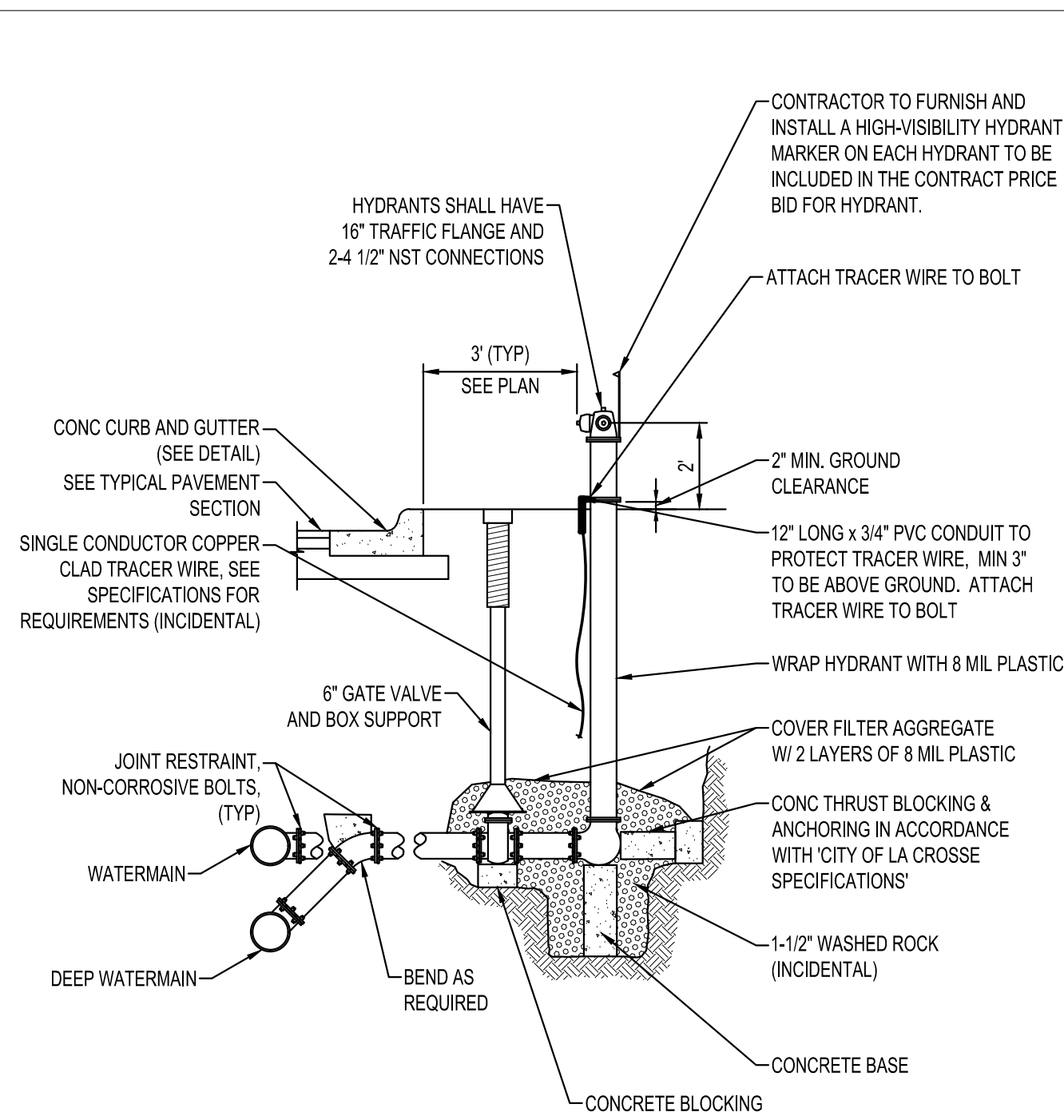
REVISION SCHEDULE		
DATE	DESCRIPTION	BY

PROJECT NO. 25-32213  
FILE NAME 32213-CO-DETAILS  
DRAWN BY DT  
DESIGNED BY KR  
REVIEWED BY KR  
ORIGINAL ISSUE DATE  
CLIENT PROJECT NO. -

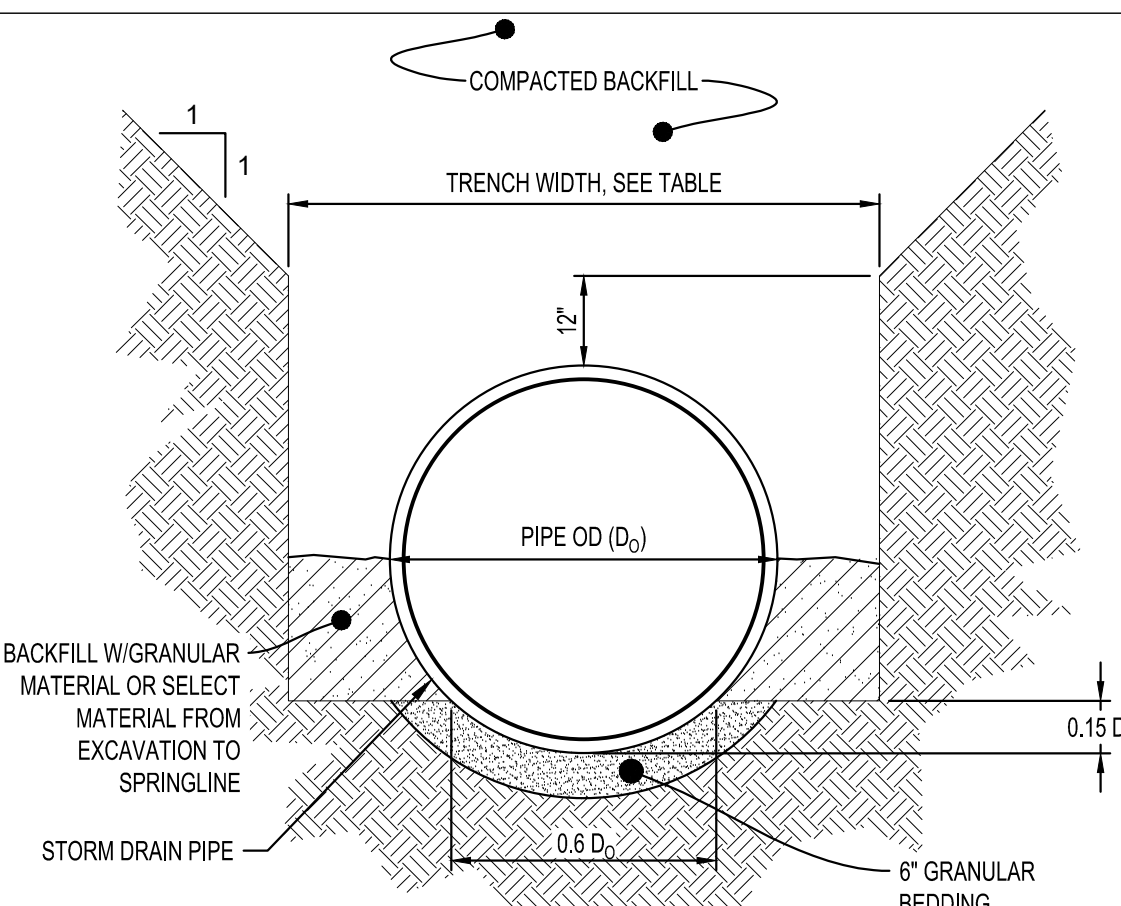
TITLE  
**SITE DETAILS**

SHEET

**C0-22**



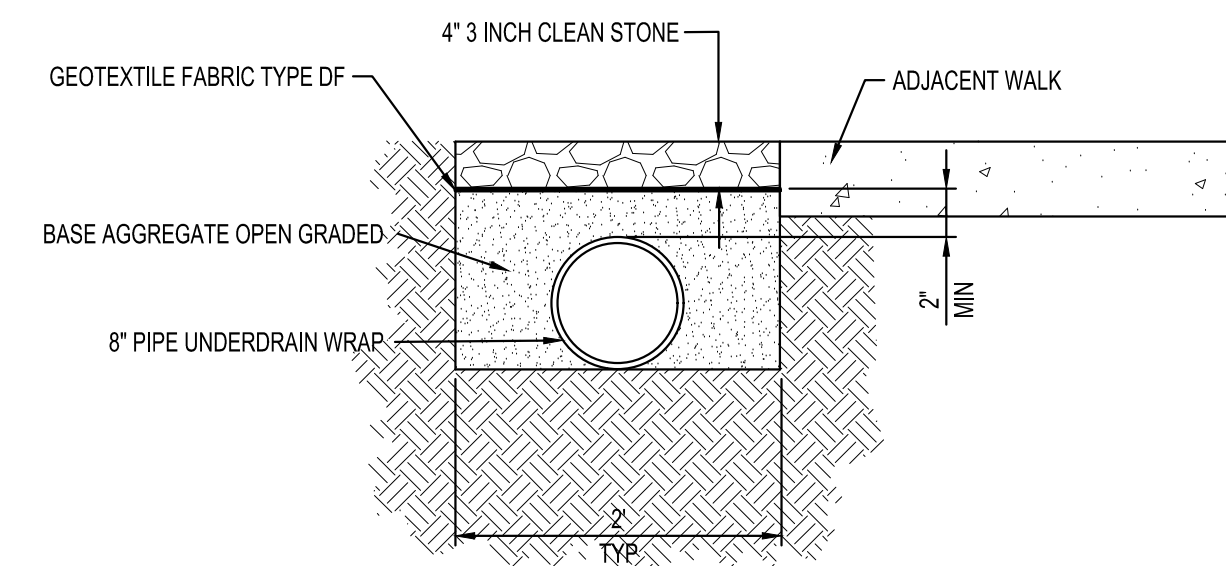
**TYPICAL HYDRANT INSTALLATION**  
NTS



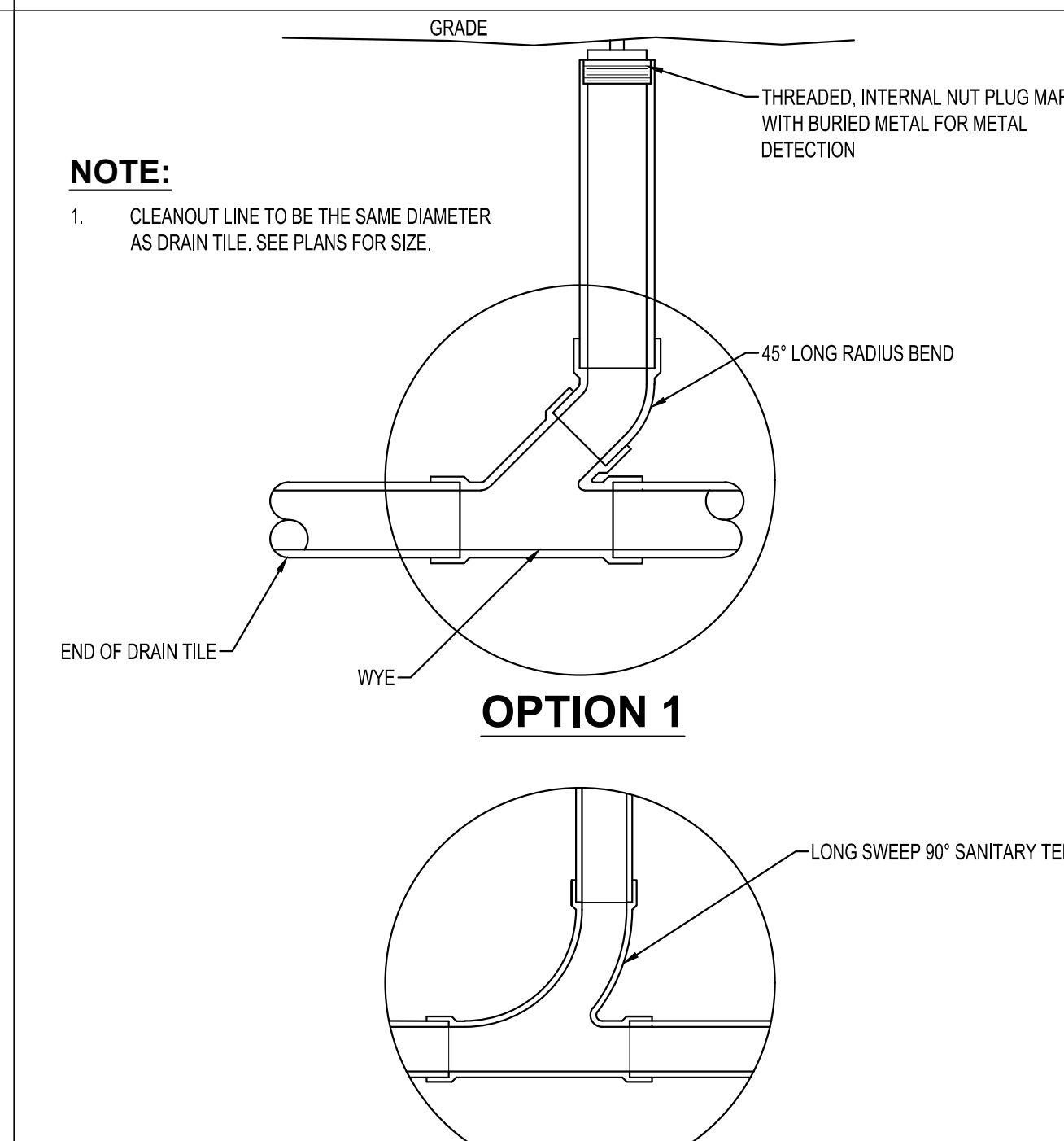
TRENCH WIDTH	
PIPE Ø	TRENCH WIDTH
36\"/>	

- NOTES:**
1. GRANULAR BEDDING AND BACKFILL FOR STORM DRAIN PIPES SHALL BE INCIDENTAL TO STORM DRAIN CONSTRUCTION

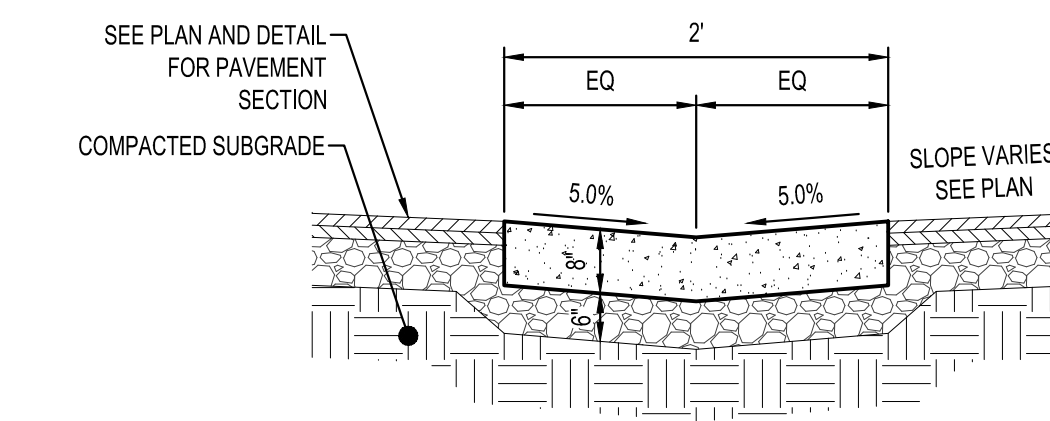
**REINFORCED CONCRETE STORM DRAIN PIPE BEDDING**  
NTS



**ROCK LANDSCAPING WITH UNDERDRAIN DETAIL**  
NTS

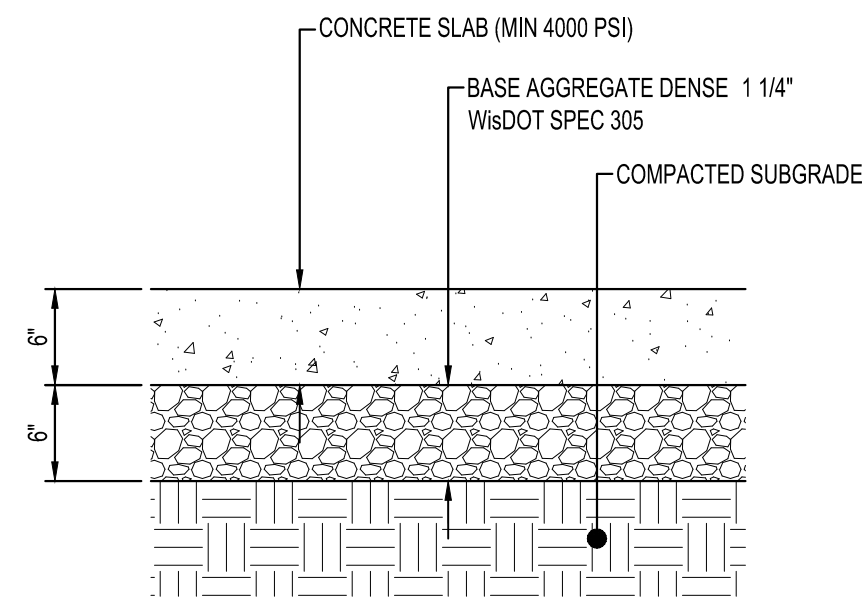


**SUBDRAIN CLEANOUT**  
NTS

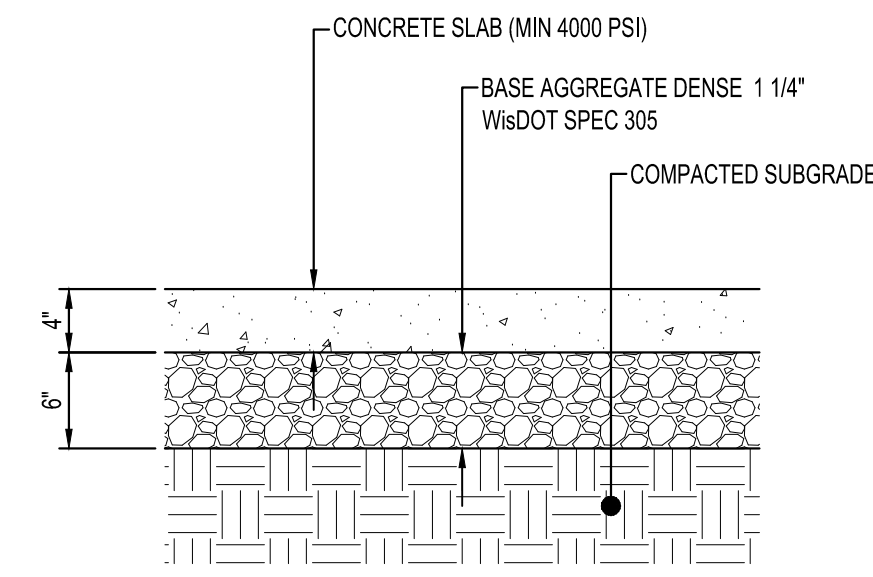


**CONCRETE VALLEY GUTTER**  
NTS

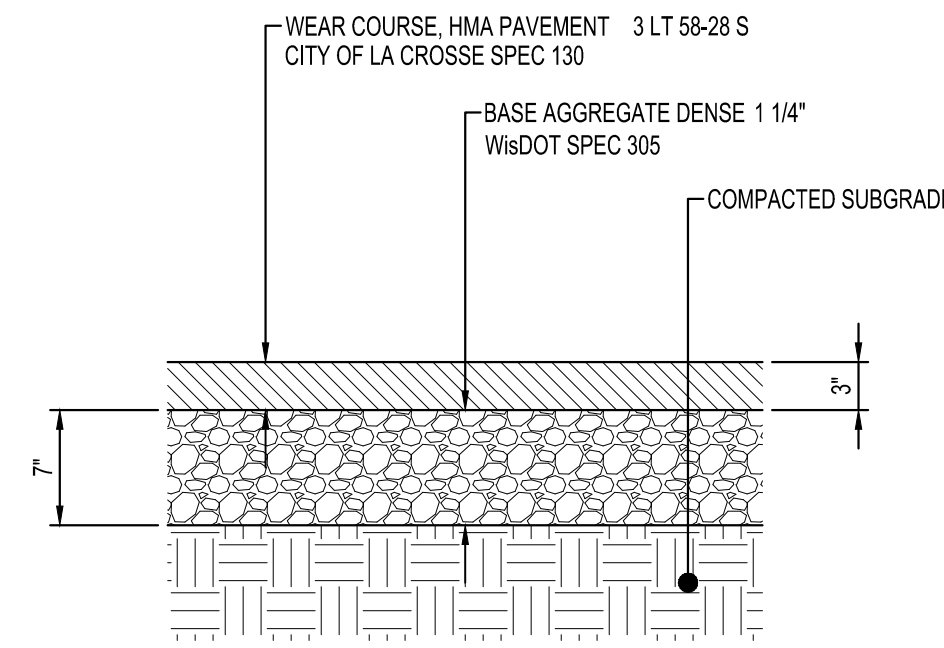
PRELIMINARY NOT FOR CONSTRUCTION



**STANDARD  
CONCRETE PAVEMENT**  
NTS



**CONCRETE WALK**  
NTS



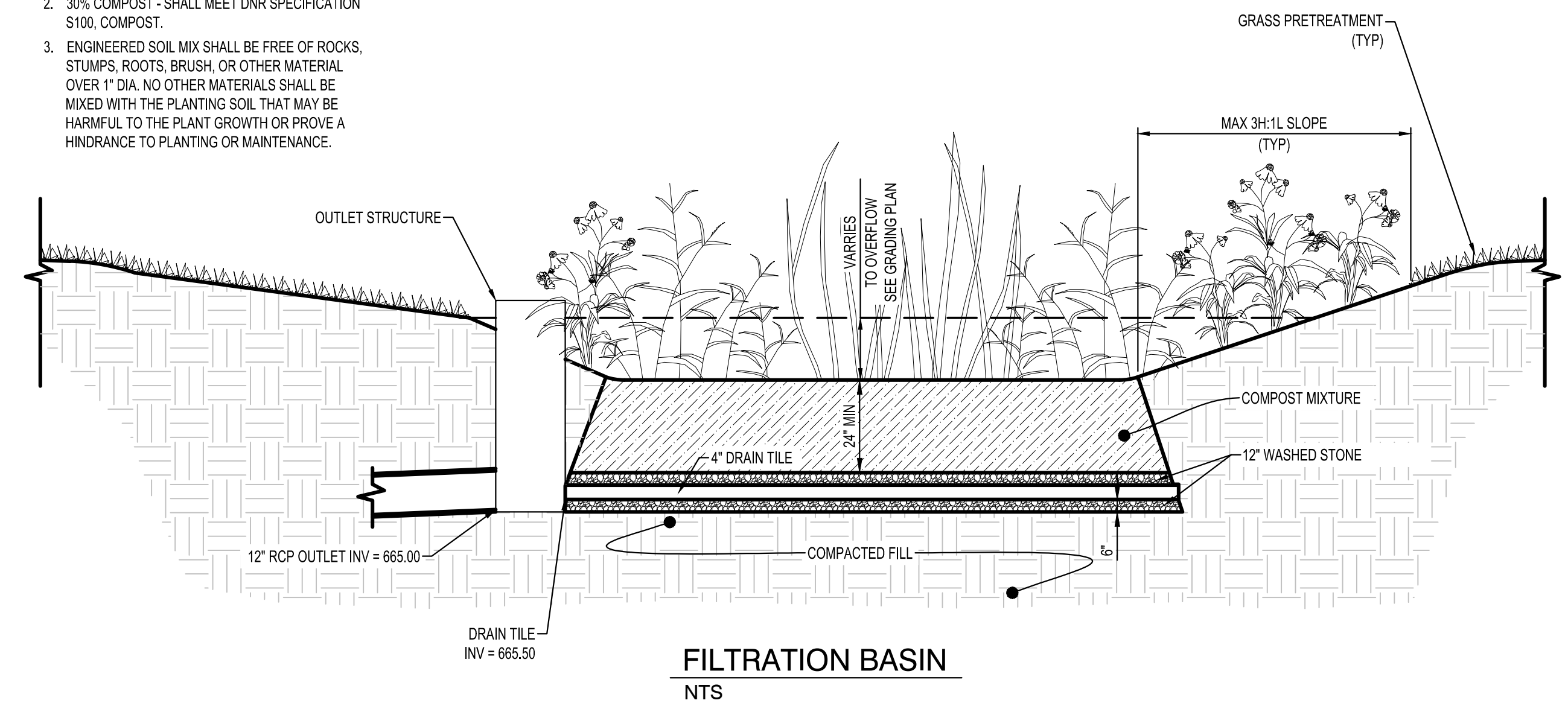
**RESIDENTIAL  
BITUMINOUS CONCRETE PAVEMENT**  
NTS

**FILTRATION BASIN CONSTRUCTION:**

- A. Work shall include - All excavation and construction as outlined in the plans, specifications and details outlining the construction of the filtration basin.
- B. The Contractor shall maintain all fence around the perimeter of the filtration basin during all phases of construction. The filtration area must be staked off and marked to keep all construction traffic, equipment and material stockpiles out of the proposed filtration area.
- C. The Contractor shall ensure that the filtration basin is not used as a sediment trap during construction and that no runoff enters the basin prior to the completion of construction and complete stabilization of surrounding areas draining to the basin. All upland drainage must be diverted to prevent runoff from entering filtration basin work area.
- D. Filtration basin shall be constructed at the end of the project after all areas surrounding it and draining into it have been constructed and fully stabilized, this includes the sanitary sewer. In order to avoid soil compaction in the basin no equipment shall be driven in the area of the basin prior to its construction, and when it is constructed only light earth moving equipment with tracks shall be used.
- E. After final grading the basin's floor shall be filled to a depth of at least 6 inches to provide a well-aerated, porous surface. Smearing of the soil in the basin shall be avoided and if smearing does occur it shall be corrected by raking or retiling of the basin.
- F. Immediately following filtration basin construction, the entire basin shall be seeded and stabilized as indicated in the plans. Filtration basin MUST be fully stabilized prior to any upstream runoff being directed to basin.

**ENGINEERED MEDIA COMPOSITION:**

1. 70% SILICA SAND - USDA COARSE SAND, (0.02 TO 0.04") PRE-WASHED TO REMOVE CLAY AND SILT PARTICLES AND WELL-DRAINED OR DRY PRIOR TO MIXING.
2. 30% COMPOST - SHALL MEET DNR SPECIFICATION S100, COMPOST.
3. ENGINEERED SOIL MIX SHALL BE FREE OF ROCKS, STUMPS, ROOTS, BRUSH, OR OTHER MATERIAL OVER 1" DIA. NO OTHER MATERIALS SHALL BE MIXED WITH THE PLANTING SOIL THAT MAY BE HARMFUL TO THE PLANT GROWTH OR PROVE A HINDRANCE TO PLANTING OR MAINTENANCE.



**FILTRATION BASIN**  
NTS

SHEET NOT VALID UNLESS THIS TEXT IS COLOR.

PROJECT

**BADGER WEST  
WEST  
DEVELOPMENT**

LACROSSE WISCONSIN

REVISION SCHEDULE		
DATE	DESCRIPTION	BY

PROJECT NO.	25-32213
FILE NAME	32213-CO-DETAILS
DRAWN BY	DT
DESIGNED BY	KR
REVIEWED BY	KR
ORIGINAL ISSUE DATE	11/14/2025
CLIENT PROJECT NO.	-

TITLE

**SITE DETAILS**

SHEET

**C0-23**

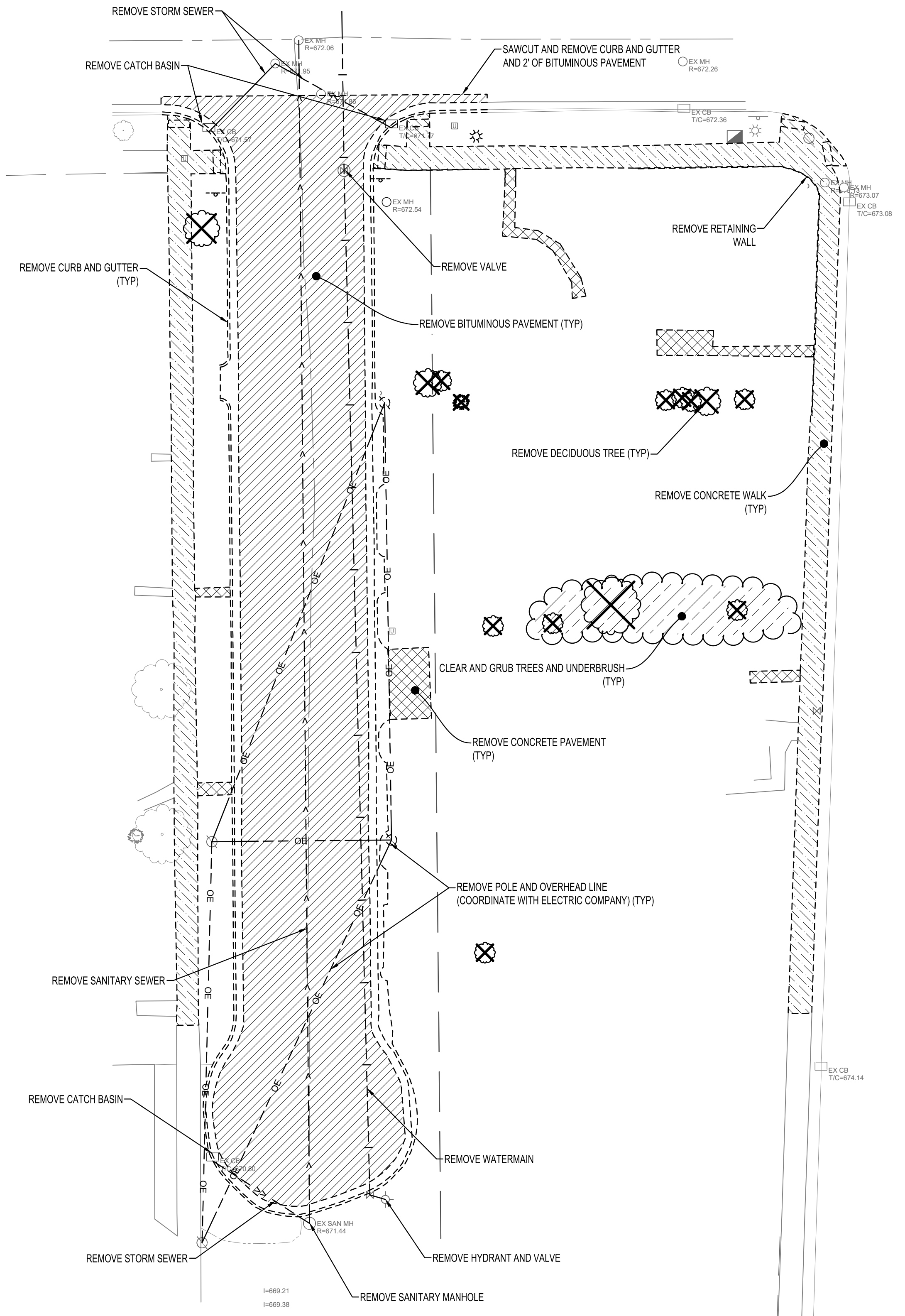
PRELIMINARY NOT FOR CONSTRUCTION



**REMOVAL LEGEND**

SYMBOL	DESCRIPTION
	REMOVE BITUMINOUS PAVEMENT
	REMOVE CONCRETE PAVEMENT
	REMOVE CONCRETE WALK
	DEMOLISH BUILDING
	CLEAR AND GRUB TREES AND UNDERBRUSH
	REMOVE DECIDUOUS TREE (CLEAR AND GRUB)

CONTRACTOR SHALL VERIFY EXISTING PAVEMENT SECTION AND NOTIFY ENGINEER OF ANY DISCREPANCIES. PAVEMENT REMOVALS SHALL INCLUDE FULL DEPTH SAWCUT AND SECTION REMOVAL.



SHEET NOT VALID UNLESS THIS TEXT IS COLOR.

PROJECT

**BADGER WEST  
WEST DEVELOPMENT**

LACROSSE WISCONSIN

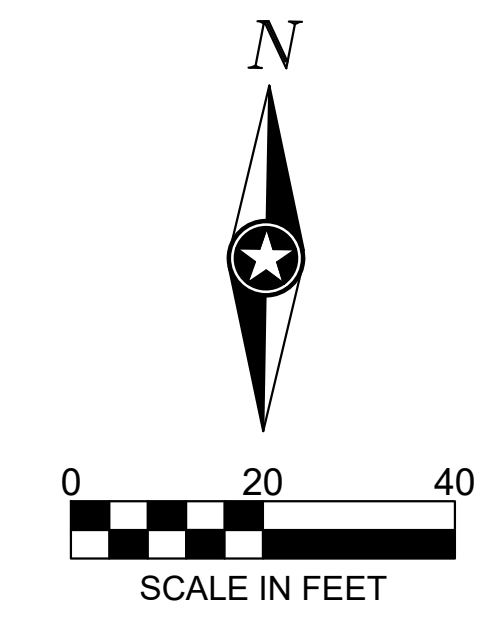
REVISION SCHEDULE		
DATE	DESCRIPTION	BY

PROJECT NO. 25-32213  
 FILE NAME 32213-C2-EXIST  
 DRAWN BY DT  
 DESIGNED BY KR  
 REVIEWED BY KR  
 ORIGINAL ISSUE DATE  
 CLIENT PROJECT NO. -

TITLE

**EXISTING SITE  
AND REMOVAL  
PLAN**

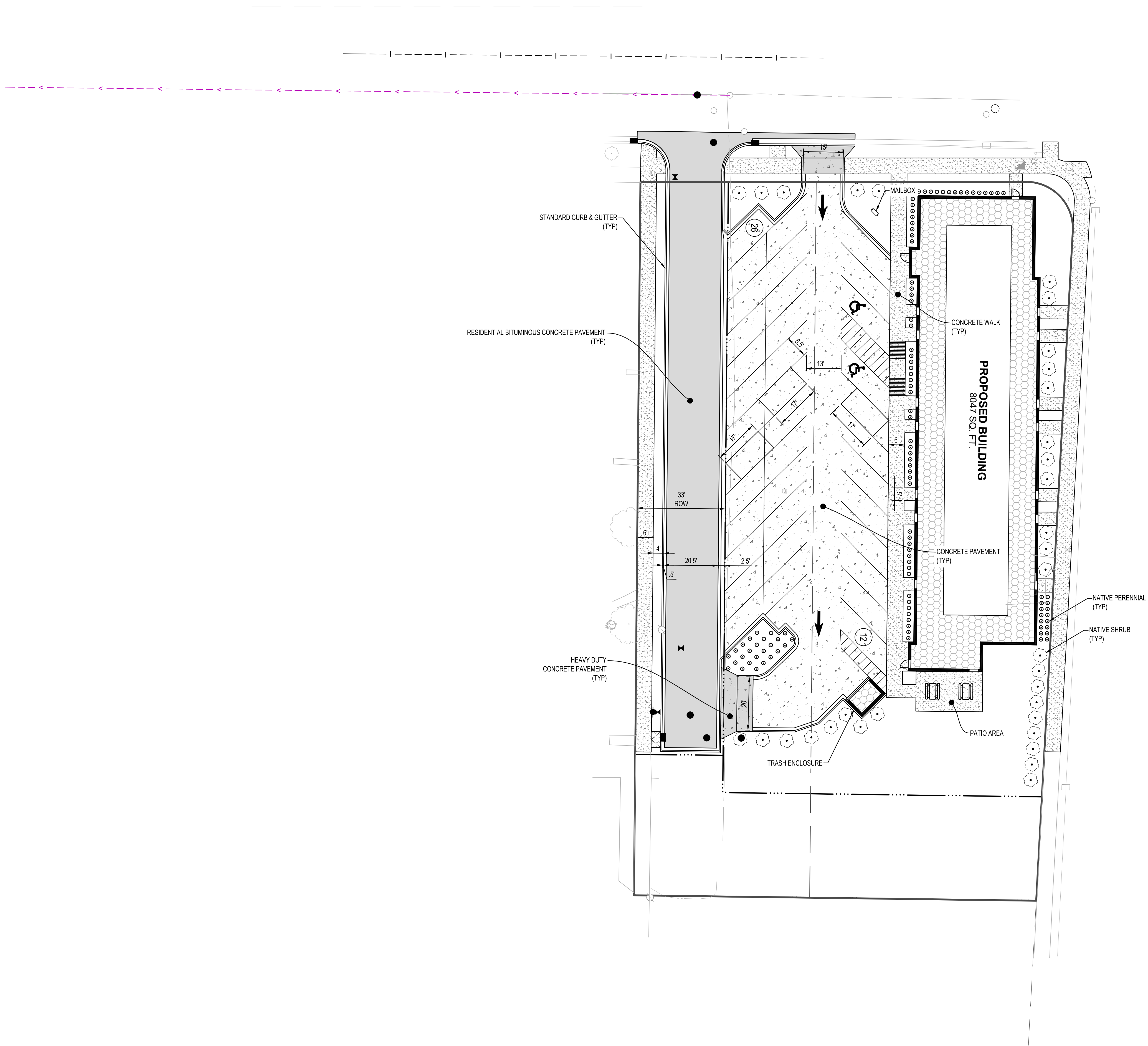
SHEET **C2-10**



PRELIMINARY NOT FOR CONSTRUCTION



PAVEMENT LEGEND	
SYMBOL	DESCRIPTION
	BITUMINOUS PAVEMENT
	CONCRETE PAVEMENT
	HEAVY DUTY CONCRETE PAVEMENT
	CONCRETE WALK



SHEET NOT VALID UNLESS THIS TEXT IS COLOR.

PROJECT

**BADGER WEST  
WEST  
DEVELOPMENT**

LACROSSE WISCONSIN

REVISION SCHEDULE		
DATE	DESCRIPTION	BY

PROJECT NO.	25-32213
FILE NAME	3213-C3-SITE
DRAWN BY	DT
DESIGNED BY	KR
REVIEWED BY	KR
ORIGINAL ISSUE DATE	11/14/2025
CLIENT PROJECT NO.	-

TITLE

**OVERALL SITE  
PLAN**

SHEET

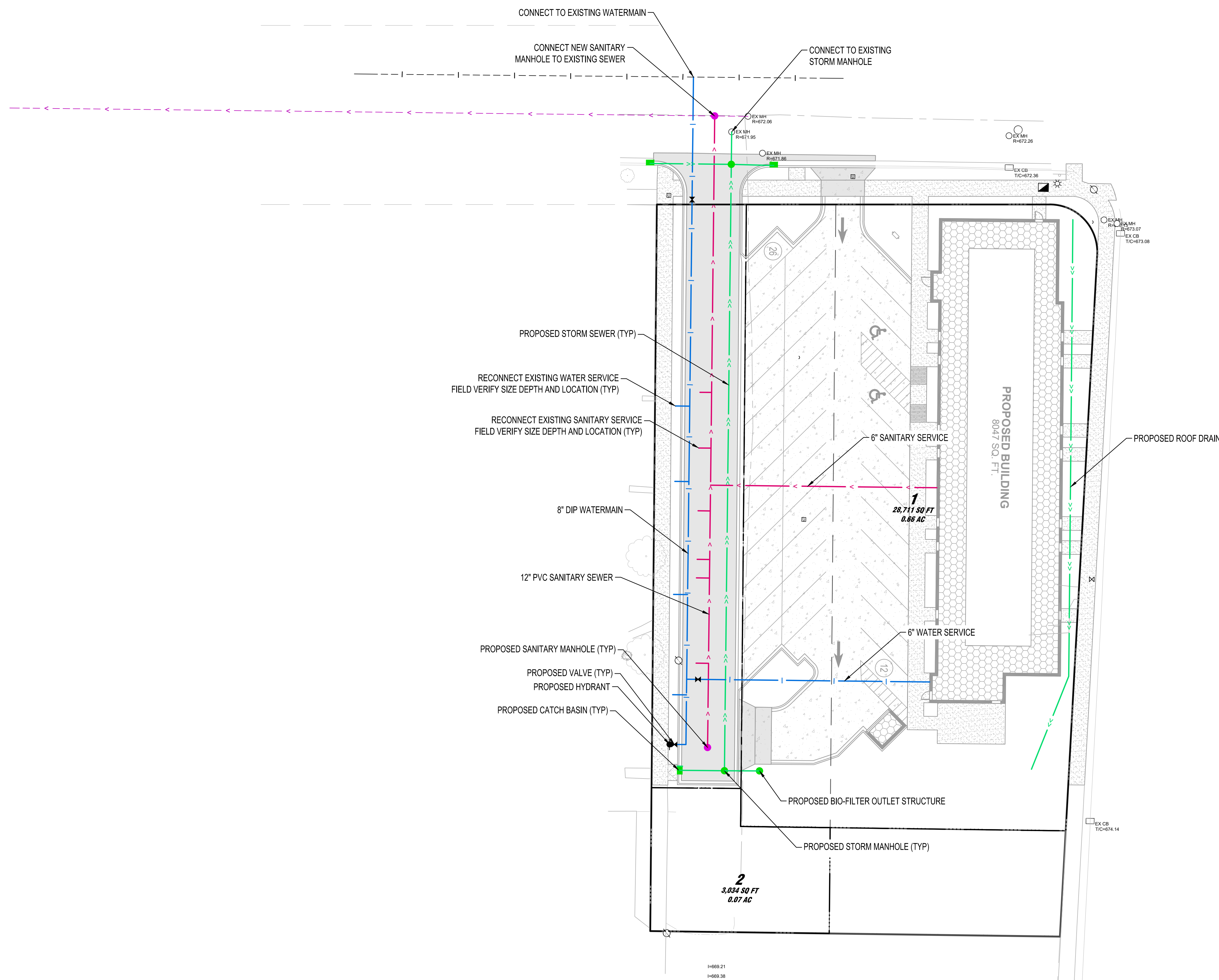
**C3-10**

PRELIMINARY NOT FOR CONSTRUCTION



UTILITY LEGEND		
EXISTING		PROPOSED
--- >> ---	STORM DRAIN	--- >> ---
--- > ---	SANITARY SEWER	--- > ---
--- II> ---	SANITARY SEWER FORCEMAIN	--- II> ---
--- I ---	WATER MAIN	--- I ---
--- G ---	GAS	--- G ---
--- OE ---	OVERHEAD ELECTRIC	--- OE ---
--- UE ---	UNDERGROUND ELECTRIC	--- UE ---
--- UT ---	UNDERGROUND TELEPHONE	--- UT ---
--- UTV ---	UNDERGROUND TV	--- UTV ---
--- OHL ---	OVERHEAD UTILITY	--- OHL ---
--- UTL ---	UNDERGROUND UTILITY	--- UTL ---
--- FBO ---	FIBER OPTIC	--- FBO ---

NOTE:  
CONTRACTOR SHALL FIELD VERIFY THE LOCATIONS OF ALL EXISTING UTILITIES.



SHEET NOT VALID UNLESS THIS TEXT IS COLOR.

PROJECT  
**BADGER WEST  
WEST  
DEVELOPMENT**  
LACROSSE WISCONSIN

REVISION SCHEDULE		
DATE	DESCRIPTION	BY

PROJECT NO. 25-32213  
FILE NAME 3213-C3-UTILITY  
DRAWN BY DT  
DESIGNED BY KR  
REVIEWED BY KR  
ORIGINAL ISSUE DATE  
CLIENT PROJECT NO. -

TITLE  
**SITE UTILITY  
PLAN**

SHEET  
**C3-20**

PRELIMINARY NOT FOR CONSTRUCTION



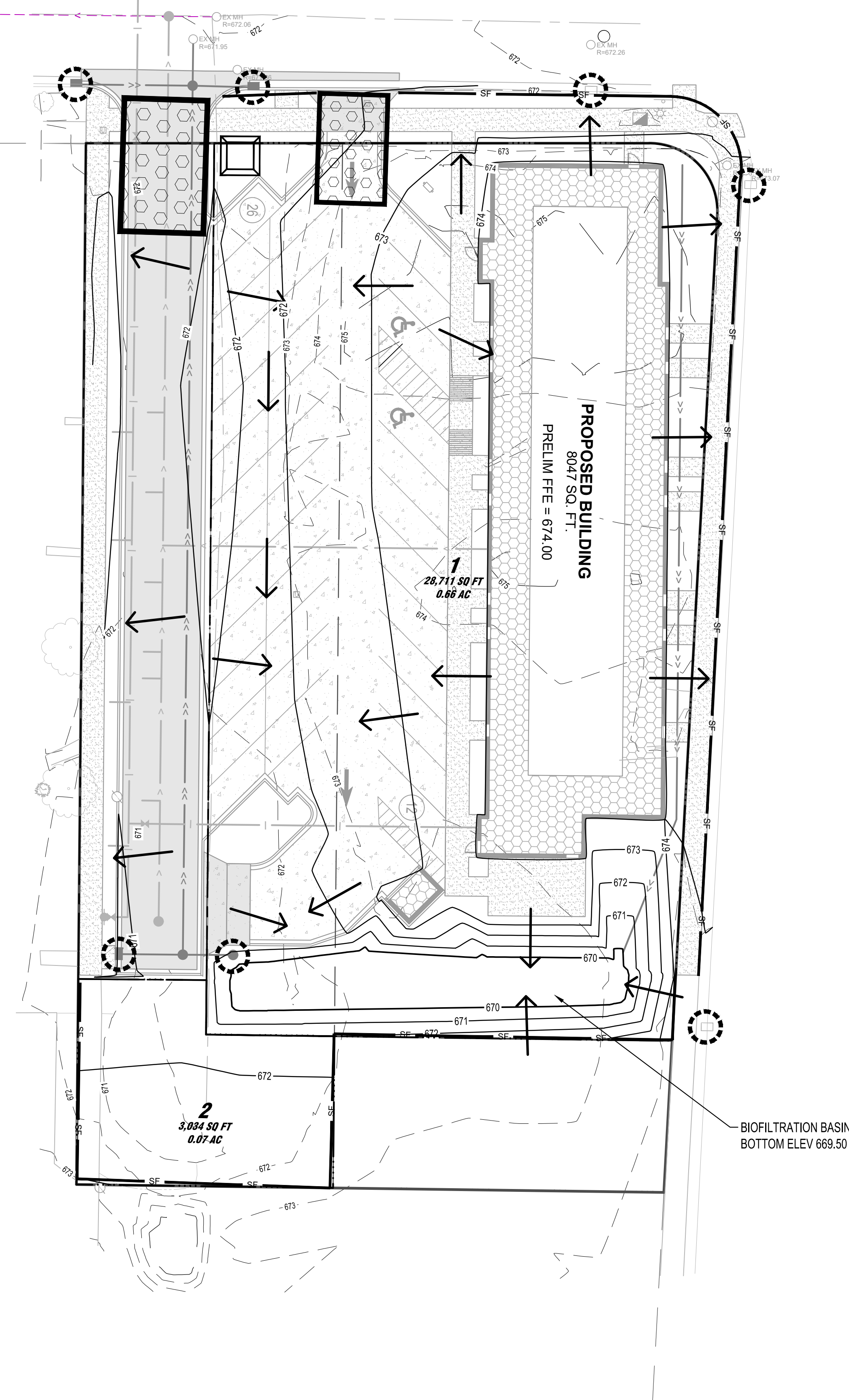


GRADING LEGEND	
--- 101 ---	EXISTING CONTOUR (MINOR INTERVAL)
--- 100 ---	EXISTING CONTOUR (MAJOR INTERVAL)
— 101 —	PROPOSED CONTOUR (MINOR INTERVAL)
— 100 —	PROPOSED CONTOUR (MAJOR INTERVAL)
● 83.00	PROPOSED SPOT ELEVATION
● 83.00	PROPOSED TOP BACK OF CURB SPOT ELEVATION
● 83.00 X.XX% XXXXXX	PROPOSED TOP OF RETAINING WALL (T/W) AND BOTTOM OF RETAINING WALL (B/W)
-X.X%	SURFACE GRADE / DIRECTION

**GENERAL GRADING NOTES**  
 PROPOSED CONTOURS SHOW FINISHED GRADE ELEVATIONS. BUILDING PAD AND PAVEMENT HOLD DOWNS ARE NOT INCLUDED. WHEN CONSTRUCTING BUILDING PADS WITH A HOLD DOWN, GRADE AREAS TO ENSURE POSITIVE BUILDING PAD DRAINAGE.

EROSION CONTROL LEGEND	
SYMBOL	DESCRIPTION
— SF —	SILT FENCE, PREASSEMBLED
○	STORM DRAIN INLET PROTECTION
□	ROCK CONSTRUCTION EXIT
□	CONCRETE WASHOUT AREA
→	PROPOSED DRAINAGE ARROW

SEE SITE RESTORATION PLAN FOR FINAL TURF ESTABLISHMENT.  
 NOTE: EROSION CONTROL PLAN COVERAGE INCLUDES ELECTRIC, GAS, TELEPHONE, AND CABLE INSTALLATION. EACH COMPANY OR THEIR SUBCONTRACTOR IS RESPONSIBLE TO FOLLOW THE REQUIREMENTS OF THIS PLAN, INCLUDING PROVIDING THEIR OWN RESTORATION IF INSTALLATION OCCURS AFTER PRIMARY INSTALLATION OF SEEDING/SODDING/MULCHING DURING CONSTRUCTION OF EACH UTILITY.



SHEET NOT VALID UNLESS THIS TEXT IS COLOR.

PROJECT

**BADGER WEST  
 WEST  
 DEVELOPMENT**

LACROSSE WISCONSIN

REVISION SCHEDULE		
DATE	DESCRIPTION	BY

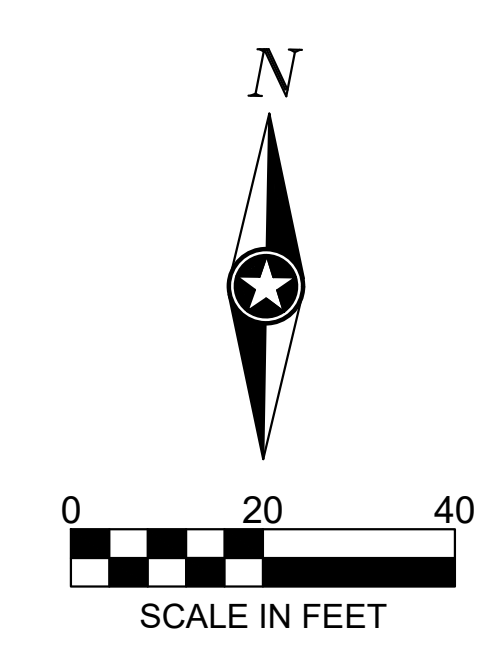
PROJECT NO.	25-32213
FILE NAME	32213-C4-GRADE
DRAWN BY	DT
DESIGNED BY	KR
REVIEWED BY	KR
ORIGINAL ISSUE DATE	11/14/2025
CLIENT PROJECT NO.	-

TITLE

**GRADING AND  
 EROSION  
 CONTROL PLAN**

SHEET

**C4-10**



PRELIMINARY NOT FOR CONSTRUCTION