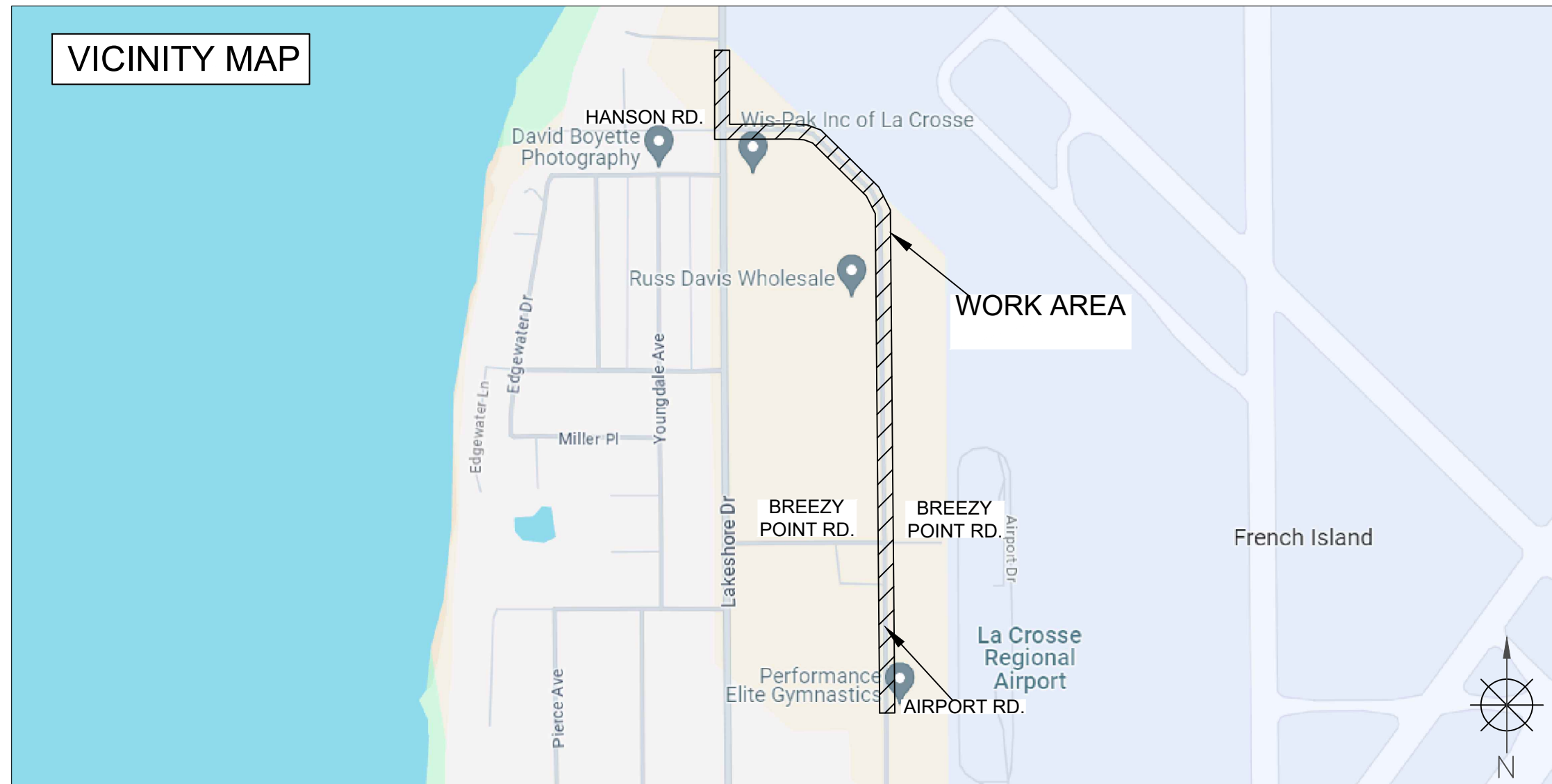


BRIGHTSPEED LA CROSSE

3314 LAKESHORE DR.
LAKESHORE DR. & AIRPORT RD.
LA CROSSE CITY, WI



TRAFFIC CONTROL PLAN

PERMITTING AGENCY
CITY OF LA CROSSE



CHC
A CONGRUEX COMPANY
9095 Rio San Diego Dr. Ste 165
San Diego, CA 92108-1694
(949) 250-0004 / FAX (949) 250-0006

BRIGHTSPEED

SCOPE OF WORK

SHEET INDEX

- BORING
- HH & GROUND ROD PLACEMENT

SHEET	DESCRIPTION
KEYMAP	VICINITY MAP & SCOPE OF WORK
TC-1 TO TC-9	TRAFFIC CONTROL PLAN

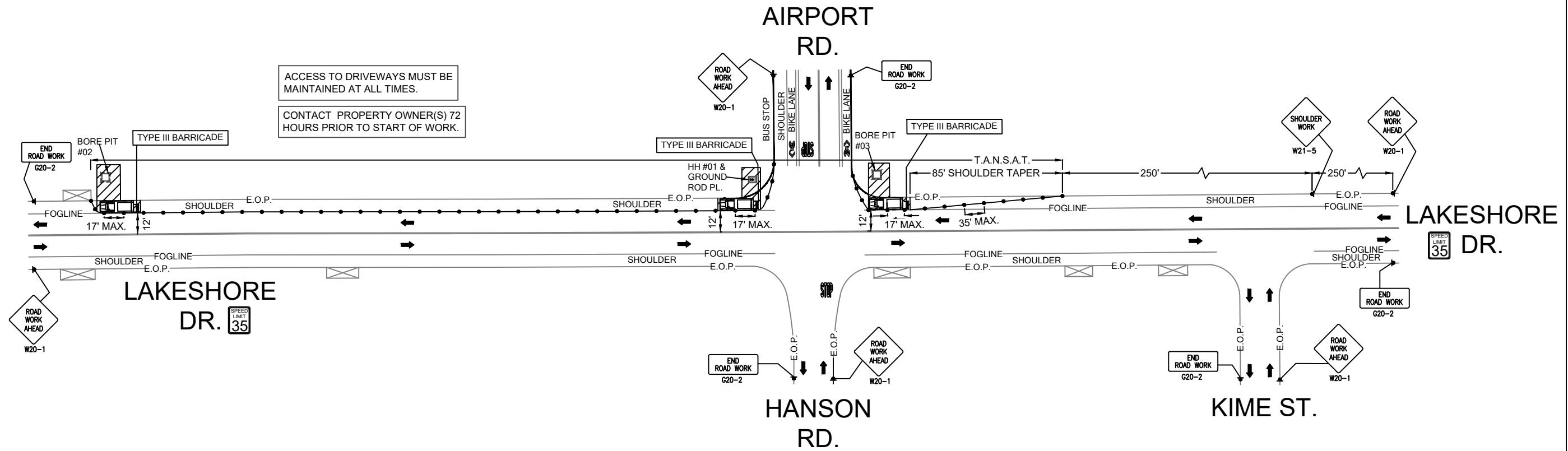
PROPOSED PATH FOOTAGE
UG PATH = 4,184'

REVISIONS			
REV.	DESCRIPTION	BY	DATE
0	INITIAL DESIGN	H.S.	5/07/24

LCRSWIFI

KEYMAP
N.T.S.

**3314 LAKESHORE DR.
LAKESHORE DR. AND AIRPORT RD.
-BORING, HH & GROUND ROD PL.
WORK AREA 1 OF 1
PHASE 1 OF 6**



ACCESS TO DRIVEWAYS MUST BE MAINTAINED AT ALL TIMES.
CONTACT PROPERTY OWNER(S) 72 HOURS PRIOR TO START OF WORK.

- LEGEND**
- * PORTABLE FLASHING BEACON (P.F.B.)
 - ≡ TYPE III BARRICADE W/SIGN
 - ≡ TYPE II BARRICADE W/SIGN
 - CHANNELIZING DEVICE
 - ▼ TRAFFIC CONE WITH CLIP ON SIGN
 - TYPE I W/ SIGN
 - EXISTING SIGN
 - ⊙ SIGNALIZED INTERSECTION
 - ⊞ FLASHING ARROW BOARD
 - ⚡ HIGH LEVEL WARNING DEVICE (FLAGTREE)
 - ⚓ FLAGGER
 - TANSAT TOW AWAY NO STOPPING ANY TIME
 - ⊞ EXISTING DRIVEWAY
 - ▨ WORK ZONE (ACTIVITY AREA) LIMITS
 - DIRECTION OF TRAFFIC (NOT PAVEMENT MARKING)

CALL 811 BEFORE YOU DIG.
WISCONSIN TOLL FREE
800-242-8511

BRIGHTSPEED

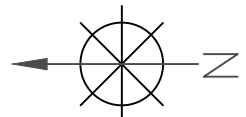
PLANS PREPARED BY:
CHC
A CONGRUEX COMPANY
9095 Rio San Diego Dr. Ste 165
San Diego, CA 92108-1694
(949) 250-0004 / FAX (949) 250-0006

REVISIONS			
REV.	DESCRIPTION	BY	DATE
0	INITIAL DESIGN	H.S.	5/07/24

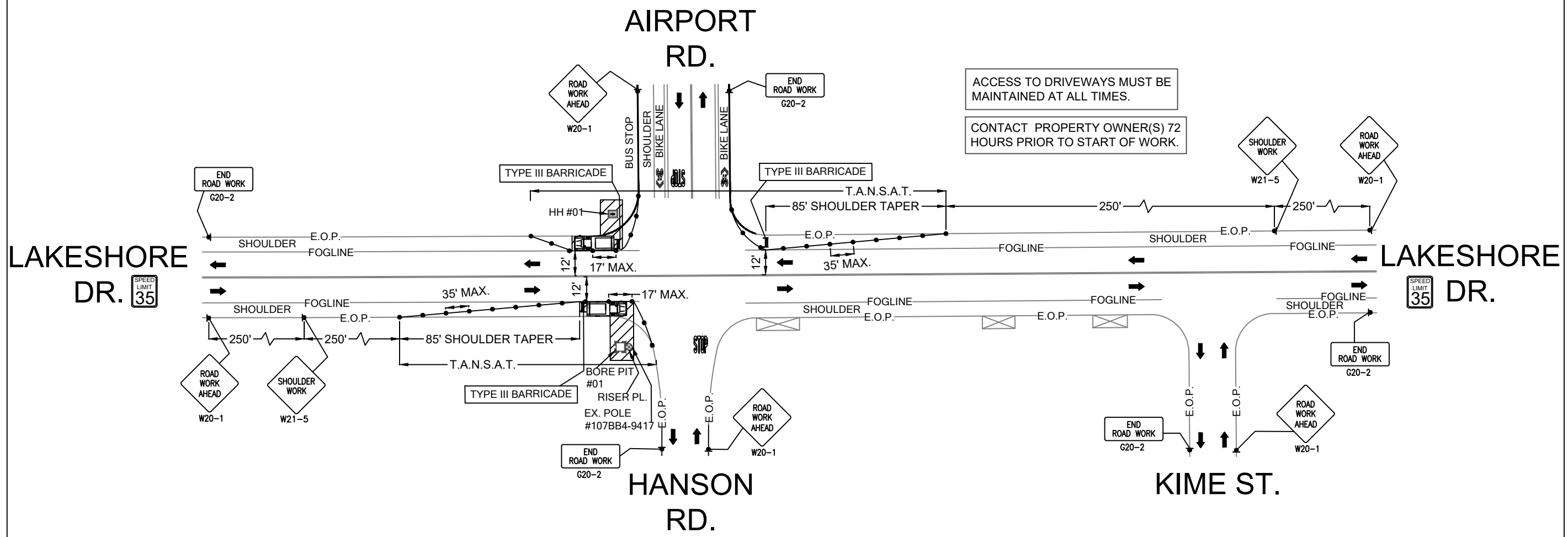
BRIGHTSPEED
CONFIDENTIAL AND PROPRIETARY
LCRSWIFI

TC-1 OF TC-9

SCALE: 1:60



**3272 AIRPORT RD.
 LAKESHORE DR. AND AIRPORT RD.
 -BORING, HH & RISER PL.
 WORK AREA 1 OF 1
 PHASE 2 OF 6**



ACCESS TO DRIVEWAYS MUST BE MAINTAINED AT ALL TIMES.
 CONTACT PROPERTY OWNER(S) 72 HOURS PRIOR TO START OF WORK.

LEGEND

- * PORTABLE FLASHING BEACON (P.F.B.)
- ≡ TYPE III BARRICADE W/SIGN
- ≡ TYPE II BARRICADE W/SIGN
- CHANNELIZING DEVICE
- ▼ TRAFFIC CONE WITH CLIP ON SIGN
- TYPE I W/ SIGN
- EXISTING SIGN
- ⊙ SIGNALIZED INTERSECTION
- ⚡ FLASHING ARROW BOARD
- ⚡ HIGH LEVEL WARNING DEVICE (FLAGTREE)
- ♠ FLAGGER
- TANSAT TOW AWAY NO STOPPING ANY TIME
- ⊠ EXISTING DRIVEWAY
- ▨ WORK ZONE (ACTIVITY AREA) LIMITS
- ➔ DIRECTION OF TRAFFIC (NOT PAVEMENT MARKING)

CALL 811 BEFORE YOU DIG.
 WISCONSIN TOLL FREE
 800-242-8511

BRIGHTSPEED

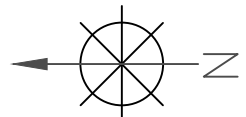
PLANS PREPARED BY:
CHC
 A CONGRUEX COMPANY
 9095 Rio San Diego Dr. Ste 165
 San Diego, CA 92108-1694
 (949) 250-0004 / FAX (949) 250-0006

REVISIONS

REV.	DESCRIPTION	BY	DATE
0	INITIAL DESIGN	H.S.	5/07/24

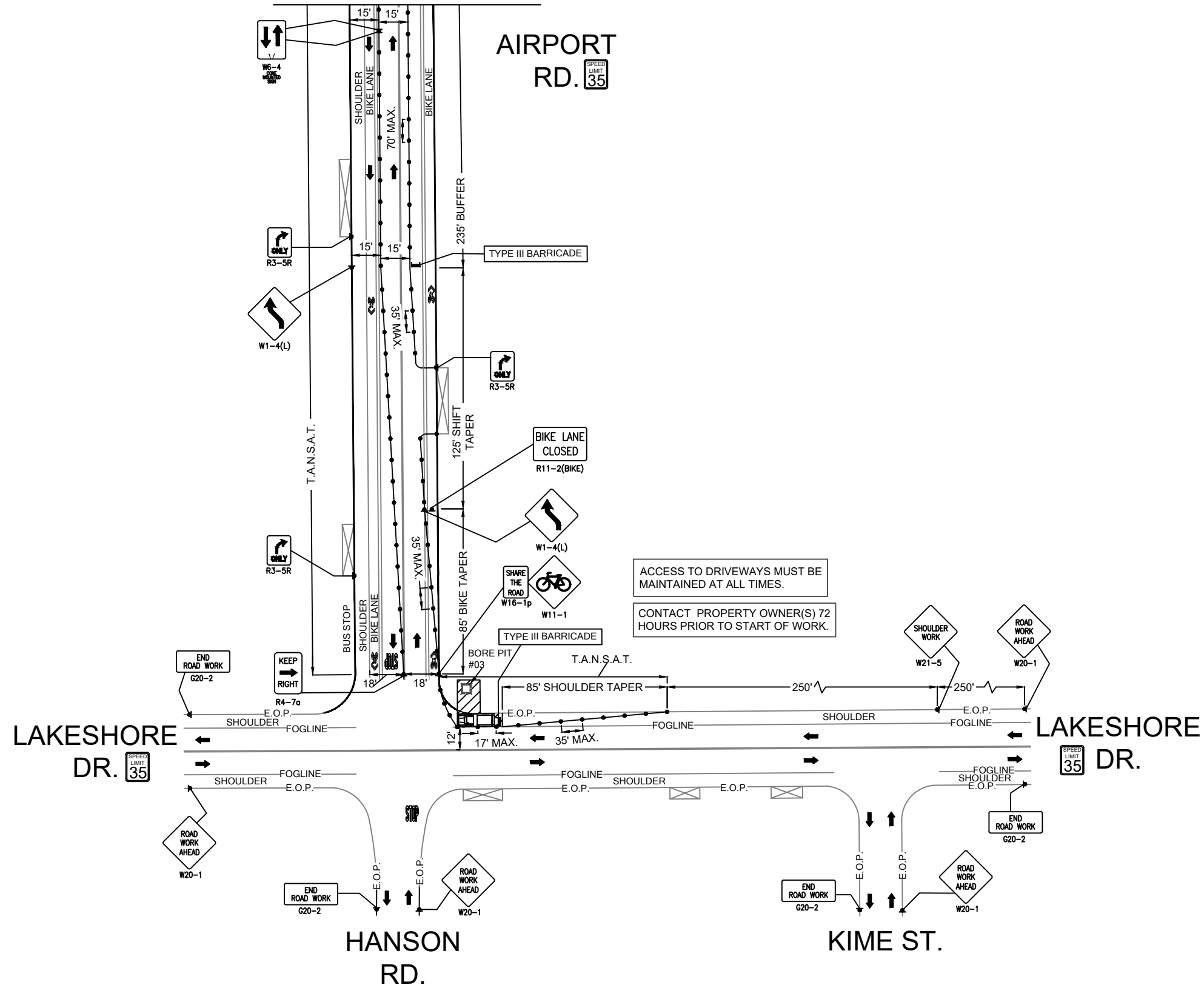
BRIGHTSPEED
 CONFIDENTIAL AND PROPRIETARY
 LCRSWIFI

TC-2 OF TC-9



3246 AIRPORT RD.
 LAKESHORE DR. AND AIRPORT RD.
 -BORING, HH & GROUND ROD PL.
 WORK AREA 1 OF 1
 PHASE 3 OF 6

MATCHLINE-A
 (SEE TC-4 OF TC-9)



LEGEND

- * PORTABLE FLASHING BEACON (P.F.B.)
- ≡ TYPE III BARRICADE W/SIGN
- ≡ TYPE II BARRICADE W/SIGN
- CHANNELIZING DEVICE
- ▼ TRAFFIC CONE WITH CLIP ON SIGN
- TYPE I W/ SIGN
- EXISTING SIGN
- ⊙ SIGNALIZED INTERSECTION
- ⊞ FLASHING ARROW BOARD
- ⚡ HIGH LEVEL WARNING DEVICE (FLAGTREE)
- ⚓ FLAGGER
- TANSAT TOW AWAY NO STOPPING ANY TIME
- ⊞ EXISTING DRIVEWAY
- ▨ WORK ZONE (ACTIVITY AREA) LIMITS
- DIRECTION OF TRAFFIC (NOT PAVEMENT MARKING)

CALL 811 BEFORE YOU DIG.
 WISCONSIN TOLL FREE
 800-242-8511

BRIGHTSPEED

PLANS PREPARED BY:
CHC
 A CONGRUEX COMPANY
 9095 Rio San Diego Dr. Ste 165
 San Diego, CA 92108-1694
 (949) 250-0004 / FAX (949) 250-0006

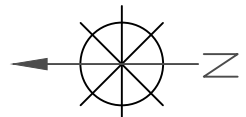
REVISIONS

REV.	DESCRIPTION	BY	DATE
0	INITIAL DESIGN	H.S.	5/07/24

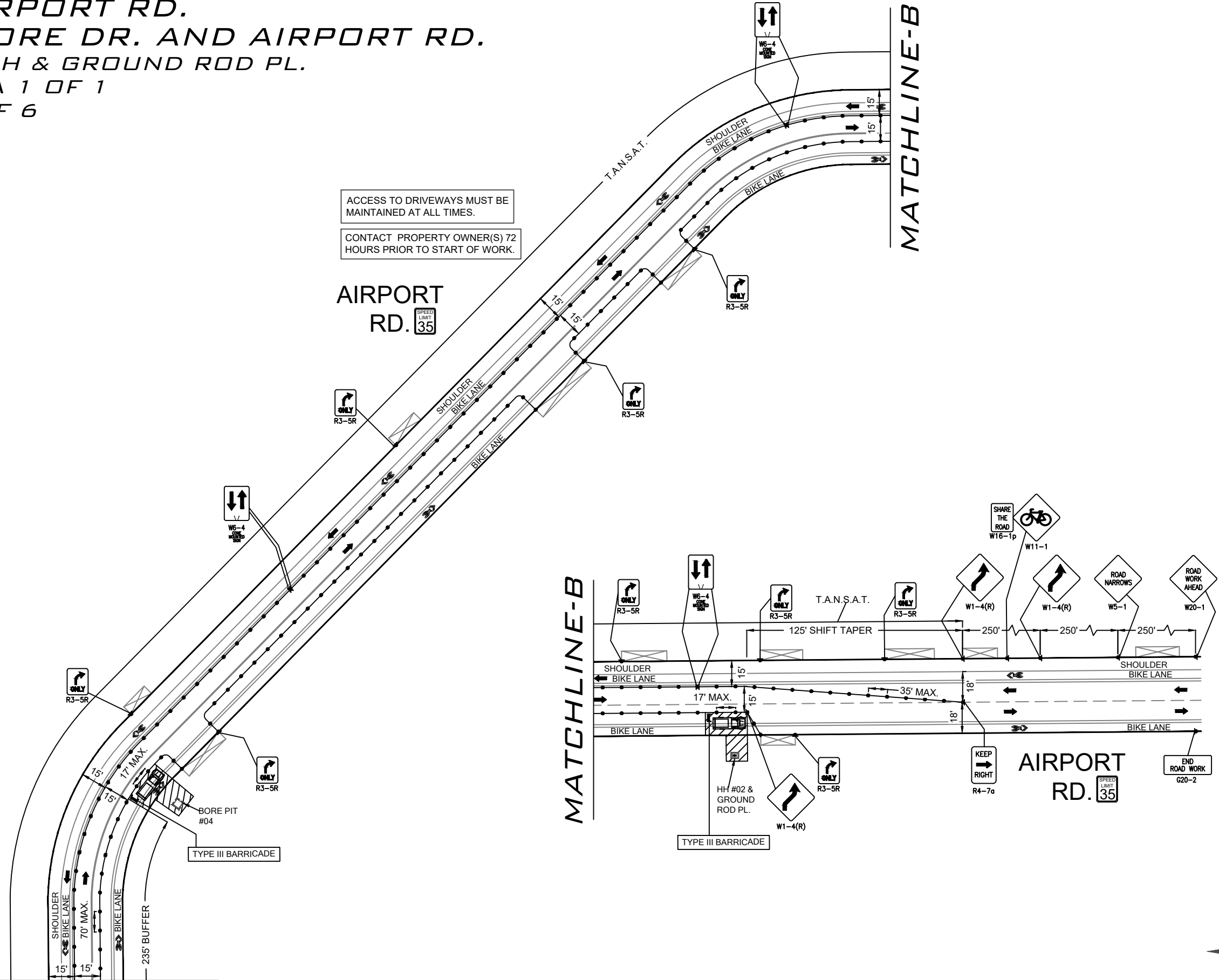
BRIGHTSPEED
 CONFIDENTIAL AND PROPRIETARY
 LCRSWIFI

TC-3 OF TC-9

SCALE: 1:60



**3246 AIRPORT RD.
 LAKESHORE DR. AND AIRPORT RD.
 -BORING, HH & GROUND ROD PL.
 WORK AREA 1 OF 1
 PHASE 3 OF 6**



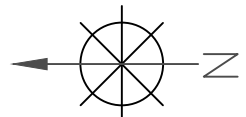
ACCESS TO DRIVEWAYS MUST BE MAINTAINED AT ALL TIMES.
 CONTACT PROPERTY OWNER(S) 72 HOURS PRIOR TO START OF WORK.

AIRPORT RD. 35

MATCHLINE-B

MATCHLINE-A

**MATCHLINE-A
 (SEE TC-3 OF TC-9)**



LEGEND

- * PORTABLE FLASHING BEACON (P.F.B.)
- ▬ TYPE III BARRICADE W/SIGN
- ⌵ TYPE II BARRICADE W/SIGN
- CHANNELIZING DEVICE
- ⌵ TRAFFIC CONE WITH CLIP ON SIGN
- ▬ TYPE I W/ SIGN
- ▬ EXISTING SIGN
- ⊙ SIGNALIZED INTERSECTION
- ⌵ FLASHING ARROW BOARD
- ⌵ HIGH LEVEL WARNING DEVICE (FLAGTREE)
- ⌵ FLAGGER
- TANSAT TOW AWAY NO STOPPING ANY TIME
- ▬ EXISTING DRIVEWAY
- ▨ WORK ZONE (ACTIVITY AREA) LIMITS
- ➔ DIRECTION OF TRAFFIC (NOT PAVEMENT MARKING)

CALL 811 BEFORE YOU DIG.
 WISCONSIN TOLL FREE
 800-242-8511

BRIGHTSPEED

PLANS PREPARED BY:
CHC
 A CONGRUEX COMPANY
 9095 Rio San Diego Dr. Ste 165
 San Diego, CA 92108-1694
 (949) 250-0004 / FAX (949) 250-0006

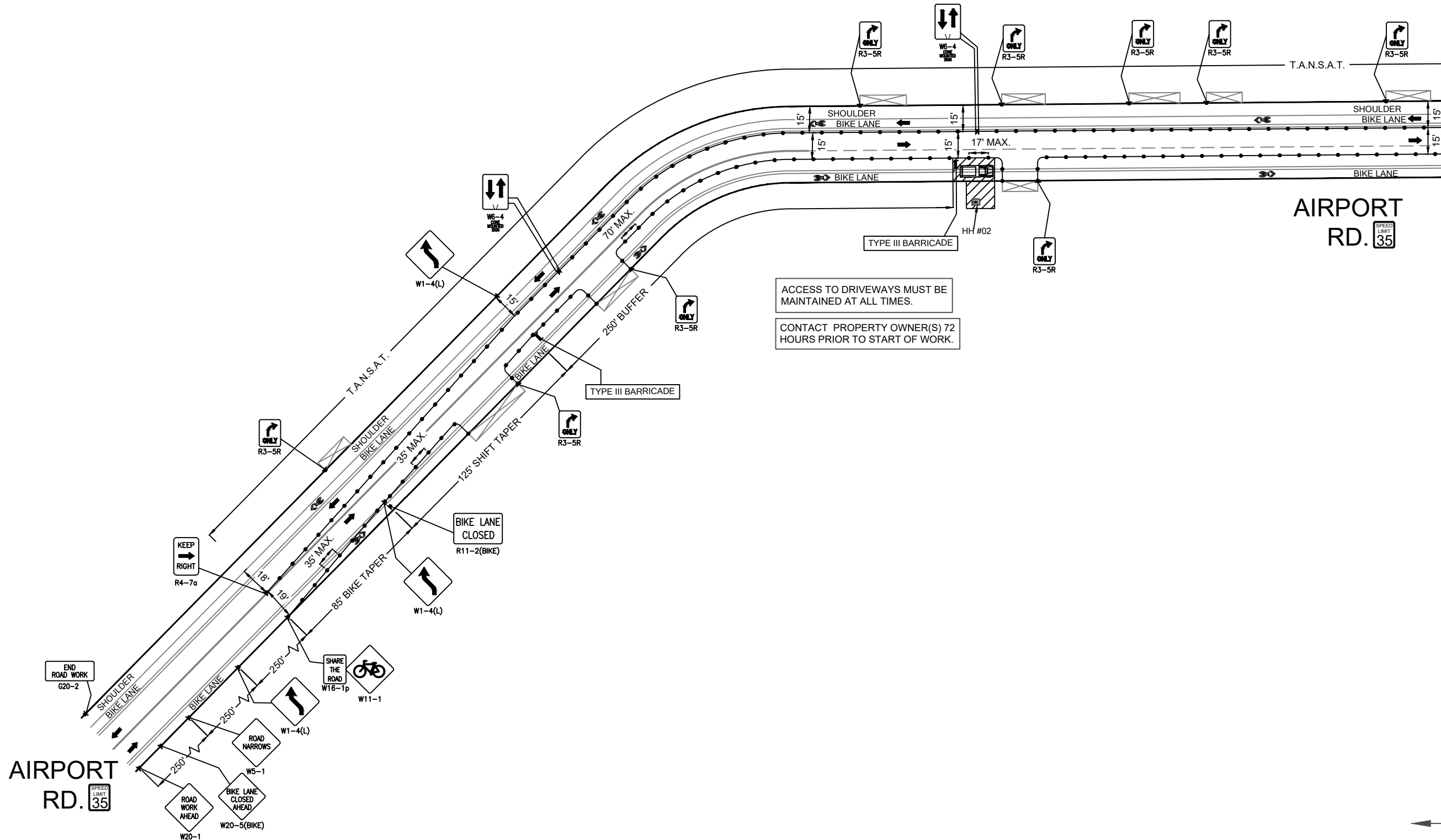
REVISIONS			
REV.	DESCRIPTION	BY	DATE
0	INITIAL DESIGN	H.S.	5/07/24

BRIGHTSPEED
 CONFIDENTIAL AND PROPRIETARY
 LCRSWIFI

TC-4 OF TC-9

SCALE: 1:60

**3160 AIRPORT RD.
 LAKESHORE DR. AND AIRPORT RD.
 -BORING & HH PL.
 WORK AREA 1 OF 1
 PHASE 4 OF 6**



ACCESS TO DRIVEWAYS MUST BE MAINTAINED AT ALL TIMES.
 CONTACT PROPERTY OWNER(S) 72 HOURS PRIOR TO START OF WORK.

MATCHLINE-C
 (SEE TC-6 OF TC-9)

LEGEND

- * PORTABLE FLASHING BEACON (P.F.B.)
- ▤ TYPE III BARRICADE W/SIGN
- ▥ TYPE II BARRICADE W/SIGN
- CHANNELIZING DEVICE
- ▼ TRAFFIC CONE WITH CLIP ON SIGN
- ▣ TYPE I W/ SIGN
- ▢ EXISTING SIGN
- ⊙ SIGNALIZED INTERSECTION
- ⊞ FLASHING ARROW BOARD
- ⚡ HIGH LEVEL WARNING DEVICE (FLAGTREE)
- ♠ FLAGGER
- TANSAT TOW AWAY NO STOPPING ANY TIME
- ▭ EXISTING DRIVEWAY
- ▨ WORK ZONE (ACTIVITY AREA) LIMITS
- ➔ DIRECTION OF TRAFFIC (NOT PAVEMENT MARKING)

CALL 811 BEFORE YOU DIG.
 WISCONSIN TOLL FREE
 800-242-8511

BRIGHTSPEED

PLANS PREPARED BY:
XCHC
 A CONGRUEUX COMPANY
 9095 Rio San Diego Dr. Ste 165
 San Diego, CA 92108-1694
 (949) 250-0004 / FAX (949) 250-0006

REVISIONS

REV.	DESCRIPTION	BY	DATE
0	INITIAL DESIGN	H.S.	5/07/24

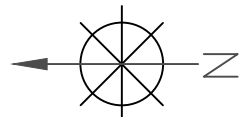
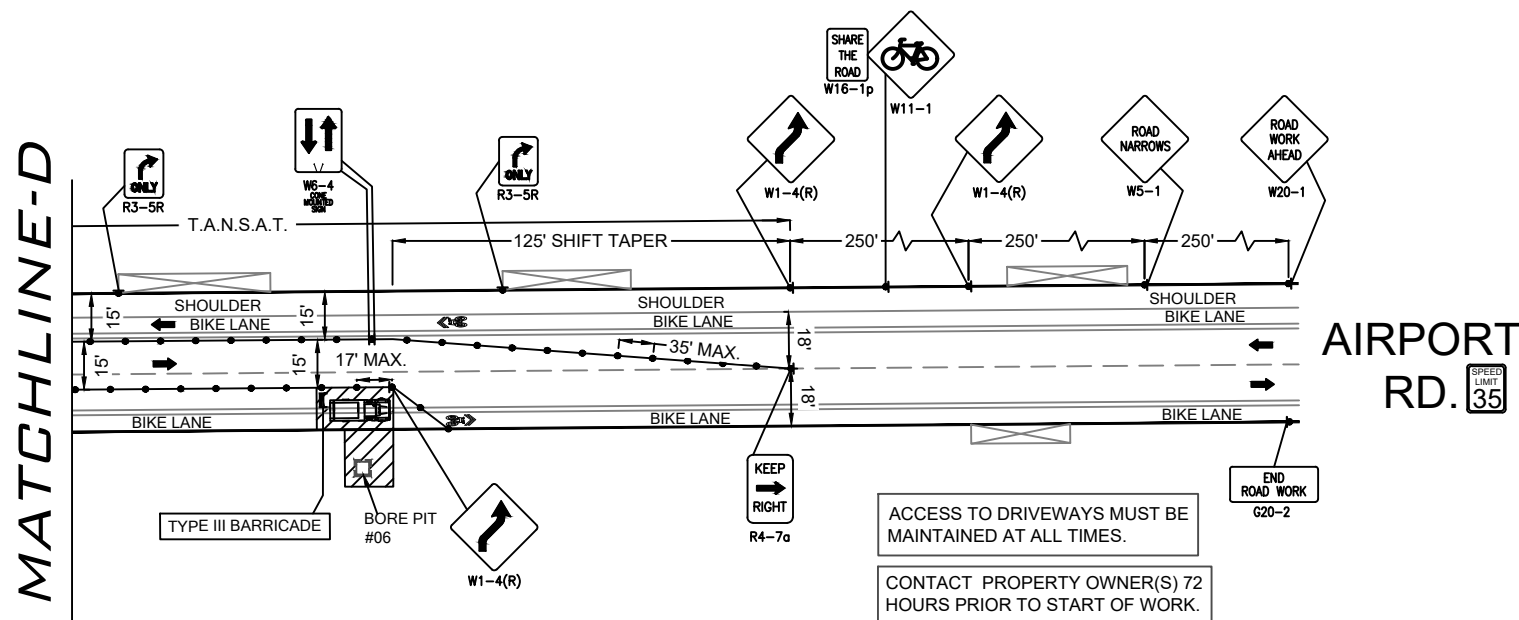
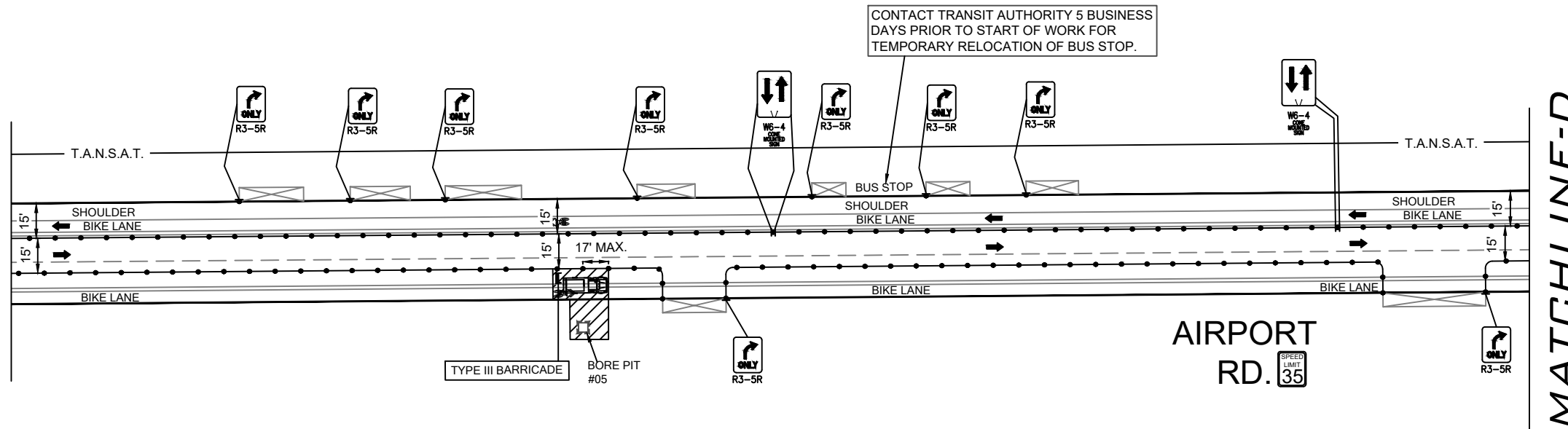
BRIGHTSPEED
 CONFIDENTIAL AND PROPRIETARY
 LCRSWIFI

TC-5 OF TC-9

SCALE: 1:60

**3160 AIRPORT RD.
 LAKESHORE DR. AND AIRPORT RD.
 -BORING & HH PL.
 WORK AREA 1 OF 1
 PHASE 4 OF 6**

MATCHLINE-C
 (SEE TC-5 OF TC-9)



LEGEND

- * PORTABLE FLASHING BEACON (P.F.B.)
- ≡ TYPE III BARRICADE W/SIGN
- ≡ TYPE II BARRICADE W/SIGN
- CHANNELIZING DEVICE
- ▼ TRAFFIC CONE WITH CLIP ON SIGN
- TYPE I W/ SIGN
- EXISTING SIGN
- ⊙ SIGNALIZED INTERSECTION
- ⊞ FLASHING ARROW BOARD
- ⚡ HIGH LEVEL WARNING DEVICE (FLAGTREE)
- ⚓ FLAGGER
- TANSAT TOW AWAY NO STOPPING ANY TIME
- ⊞ EXISTING DRIVEWAY
- ▨ WORK ZONE (ACTIVITY AREA) LIMITS
- DIRECTION OF TRAFFIC (NOT PAVEMENT MARKING)

CALL 811 BEFORE YOU DIG.
 WISCONSIN TOLL FREE
 800-242-8511

BRIGHTSPEED

PLANS PREPARED BY:
CHC
 A CONGRUEX COMPANY
 9095 Rio San Diego Dr. Ste 165
 San Diego, CA 92108-1694
 (949) 250-0004 / FAX (949) 250-0006

REVISIONS

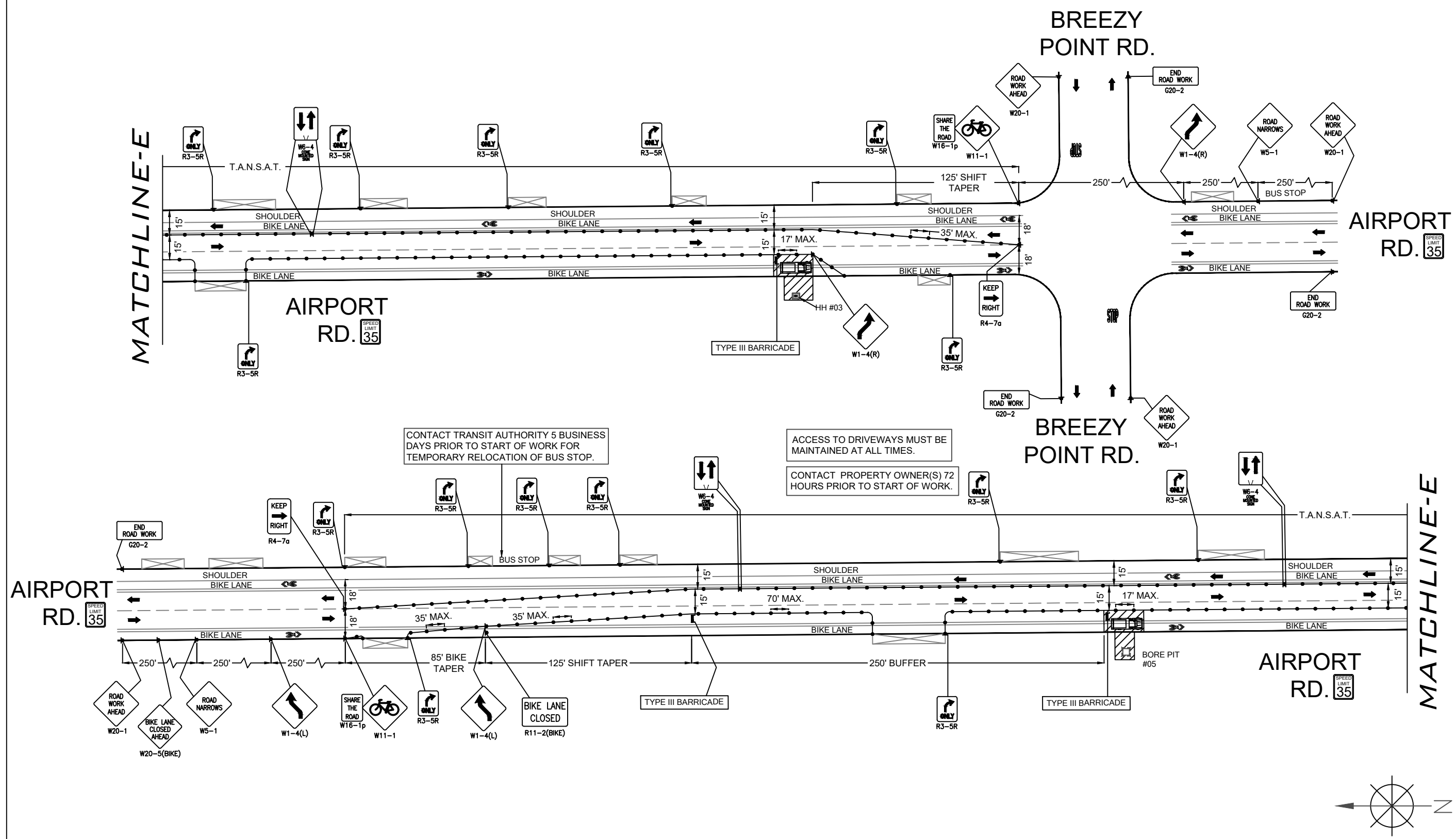
REV.	DESCRIPTION	BY	DATE
0	INITIAL DESIGN	H.S.	5/07/24

BRIGHTSPEED
 CONFIDENTIAL AND PROPRIETARY
 LCRSWIFI

TC-6 OF TC-9

SCALE: 1:60

**3030 LAKESHORE DR.
BREEZY POINT RD. AND AIRPORT RD.
-BORING & HH PL.
WORK AREA 1 OF 1
PHASE 5 OF 6**



LEGEND

- * PORTABLE FLASHING BEACON (P.F.B.)
- ≡ TYPE III BARRICADE W/SIGN
- ≡ TYPE II BARRICADE W/SIGN
- CHANNELIZING DEVICE
- ▼ TRAFFIC CONE WITH CLIP ON SIGN
- TYPE I W/ SIGN
- EXISTING SIGN
- ⊙ SIGNALIZED INTERSECTION
- ⚡ FLASHING ARROW BOARD
- ⚡ HIGH LEVEL WARNING DEVICE (FLAGTREE)
- ⚡ FLAGGER
- TANSAT TOW AWAY NO STOPPING ANY TIME
- ⊠ EXISTING DRIVEWAY
- ▨ WORK ZONE (ACTIVITY AREA) LIMITS
- DIRECTION OF TRAFFIC (NOT PAVEMENT MARKING)

CALL 811 BEFORE YOU DIG.
WISCONSIN TOLL FREE
800-242-8511

BRIGHTSPEED

PLANS PREPARED BY:
XCHC
A CONGRUEX COMPANY
9095 Rio San Diego Dr. Ste 165
San Diego, CA 92108-1694
(949) 250-0004 / FAX (949) 250-0006

REVISIONS

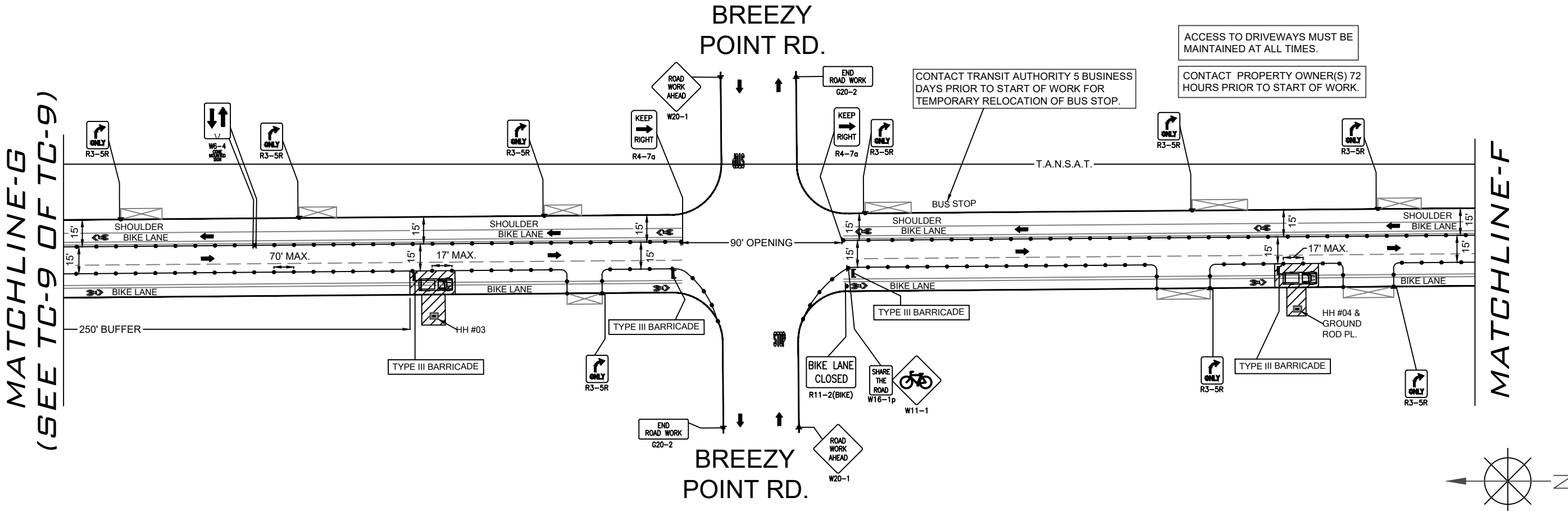
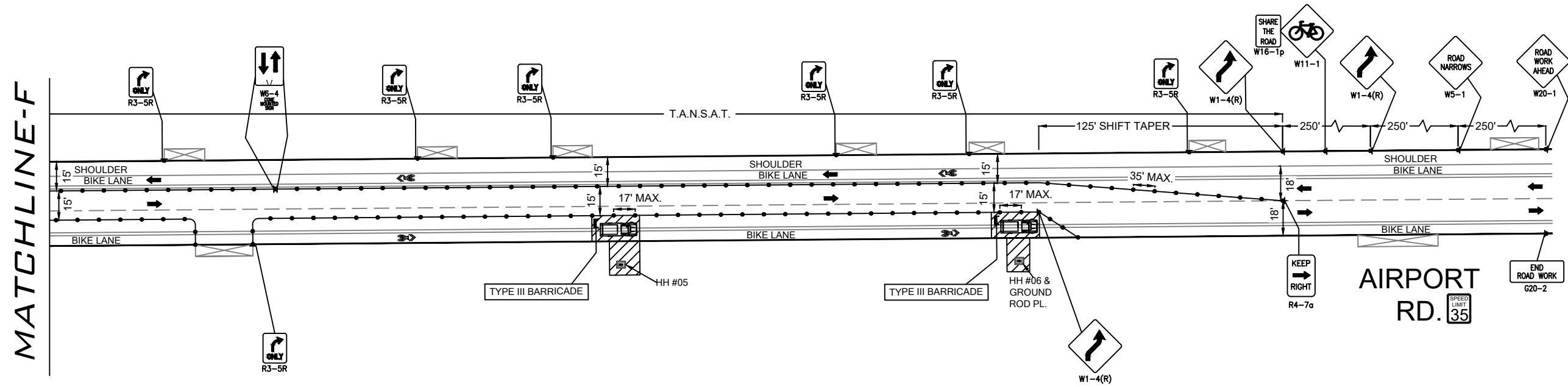
REV.	DESCRIPTION	BY	DATE
0	INITIAL DESIGN	H.S.	5/07/24

BRIGHTSPEED
CONFIDENTIAL AND PROPRIETARY
LCRSWIFI

TC-7 OF TC-9

SCALE: 1:60

**3030 LAKESHORE DR.
BREEZY POINT RD. AND AIRPORT RD.
-BORING, HH & GROUND ROD PL.
WORK AREA 1 OF 1
PHASE 6 OF 6**



LEGEND

- * PORTABLE FLASHING BEACON (P.F.B.)
- ≡ TYPE III BARRICADE W/SIGN
- ≡ TYPE II BARRICADE W/SIGN
- CHANNELIZING DEVICE
- ▼ TRAFFIC CONE WITH CLIP ON SIGN
- TYPE I W/ SIGN
- EXISTING SIGN
- ⊙ SIGNALIZED INTERSECTION
- ⊞ FLASHING ARROW BOARD
- ⚡ HIGH LEVEL WARNING DEVICE (FLAGTREE)
- ⚓ FLAGGER
- TANSAT TOW AWAY NO STOPPING ANY TIME
- ⊞ EXISTING DRIVEWAY
- ▨ WORK ZONE (ACTIVITY AREA) LIMITS
- DIRECTION OF TRAFFIC (NOT PAVEMENT MARKING)

CALL 811 BEFORE YOU DIG.
WISCONSIN TOLL FREE
800-242-8511

BRIGHTSPEED

PLANS PREPARED BY:
XCHC
A CONGRUEX COMPANY
9095 Rio San Diego Dr. Ste 165
San Diego, CA 92108-1694
(949) 250-0004 / FAX (949) 250-0006

REVISIONS

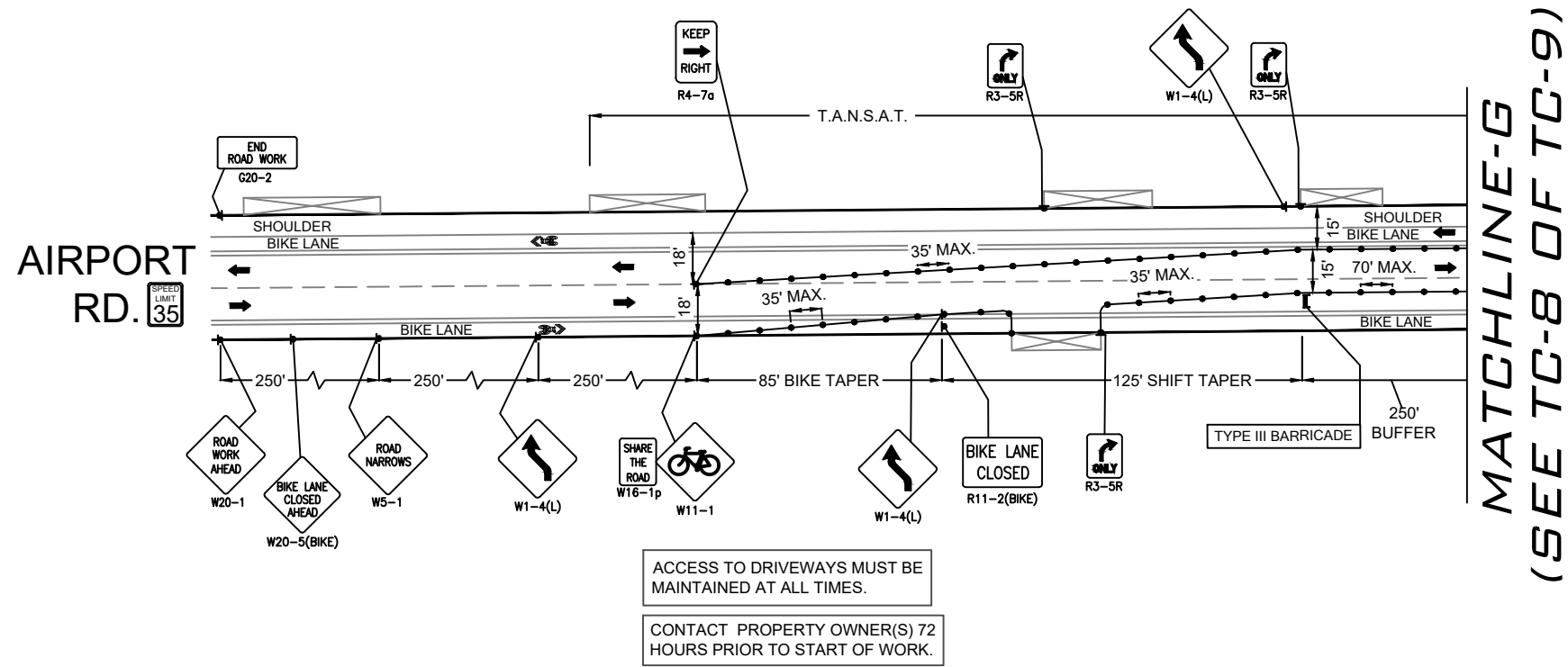
REV.	DESCRIPTION	BY	DATE
0	INITIAL DESIGN	H.S.	5/07/24

BRIGHTSPEED
CONFIDENTIAL AND PROPRIETARY
LCRSWIFI

TC-8 OF TC-9

SCALE: 1:60

**3030 LAKESHORE DR.
BREEZY POINT RD. AND AIRPORT RD.
-BORING, HH & GROUND ROD PL.
WORK AREA 1 OF 1
PHASE 6 OF 6**



LEGEND

- * PORTABLE FLASHING BEACON (P.F.B.)
- ≡ TYPE III BARRICADE W/SIGN
- ≡ TYPE II BARRICADE W/SIGN
- CHANNELIZING DEVICE
- ▼ TRAFFIC CONE WITH CLIP ON SIGN
- TYPE I W/ SIGN
- EXISTING SIGN
- ⊙ SIGNALIZED INTERSECTION
- ⊞ FLASHING ARROW BOARD
- ⚡ HIGH LEVEL WARNING DEVICE (FLAGTREE)
- ♠ FLAGGER
- TANSAT TOW AWAY NO STOPPING ANY TIME
- ⊞ EXISTING DRIVEWAY
- ▨ WORK ZONE (ACTIVITY AREA) LIMITS
- DIRECTION OF TRAFFIC (NOT PAVEMENT MARKING)

CALL 811 BEFORE YOU DIG.
WISCONSIN TOLL FREE
800-242-8511

BRIGHTSPEED

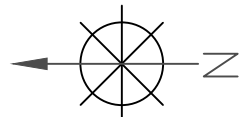
PLANS PREPARED BY:
XCHC
A CONGRUEX COMPANY
9095 Rio San Diego Dr. Ste 165
San Diego, CA 92108-1694
(949)250-0004 / FAX (949)250-0006

REVISIONS

REV.	DESCRIPTION	BY	DATE
0	INITIAL DESIGN	H.S.	5/07/24

BRIGHTSPEED
CONFIDENTIAL AND PROPRIETARY
LCRSWIFI

TC-9 OF TC-9



SCALE: 1:60