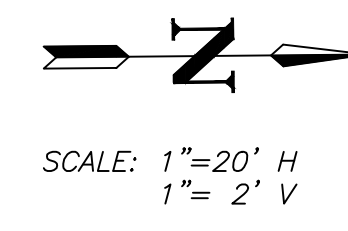
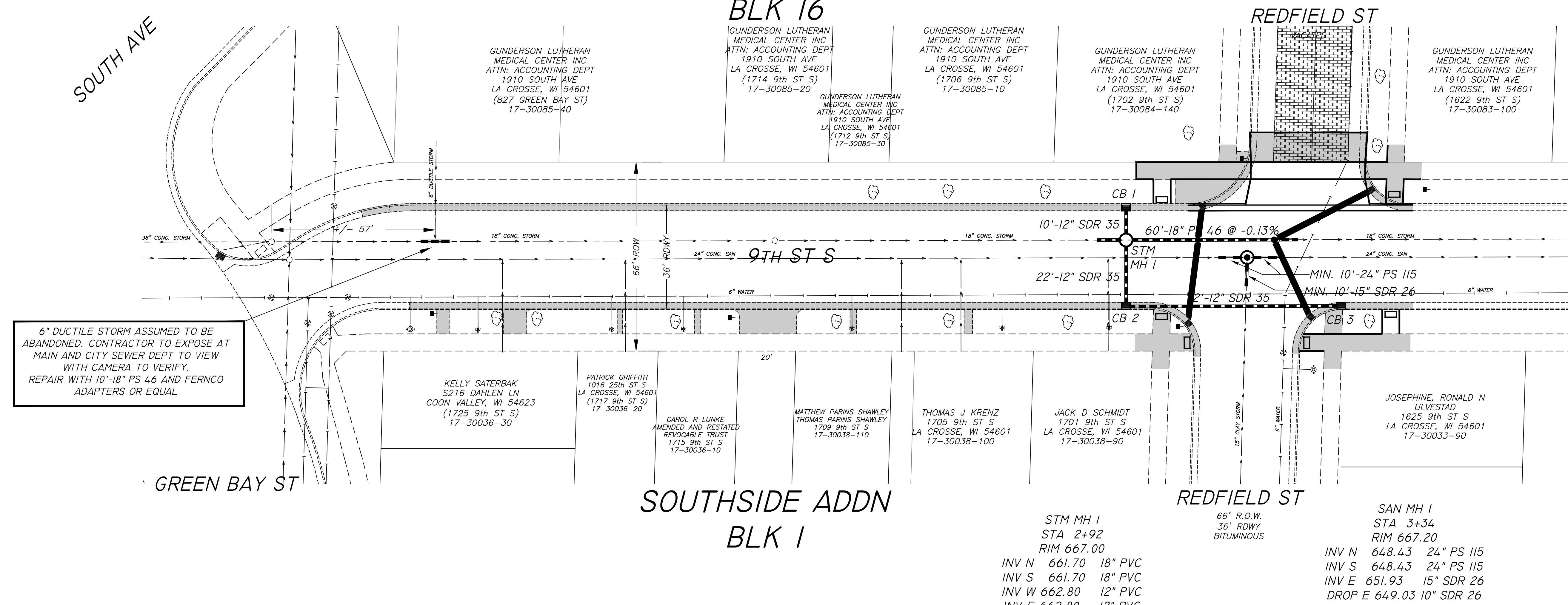


2ND PLAT BB HEALYS ADDN BLK 16



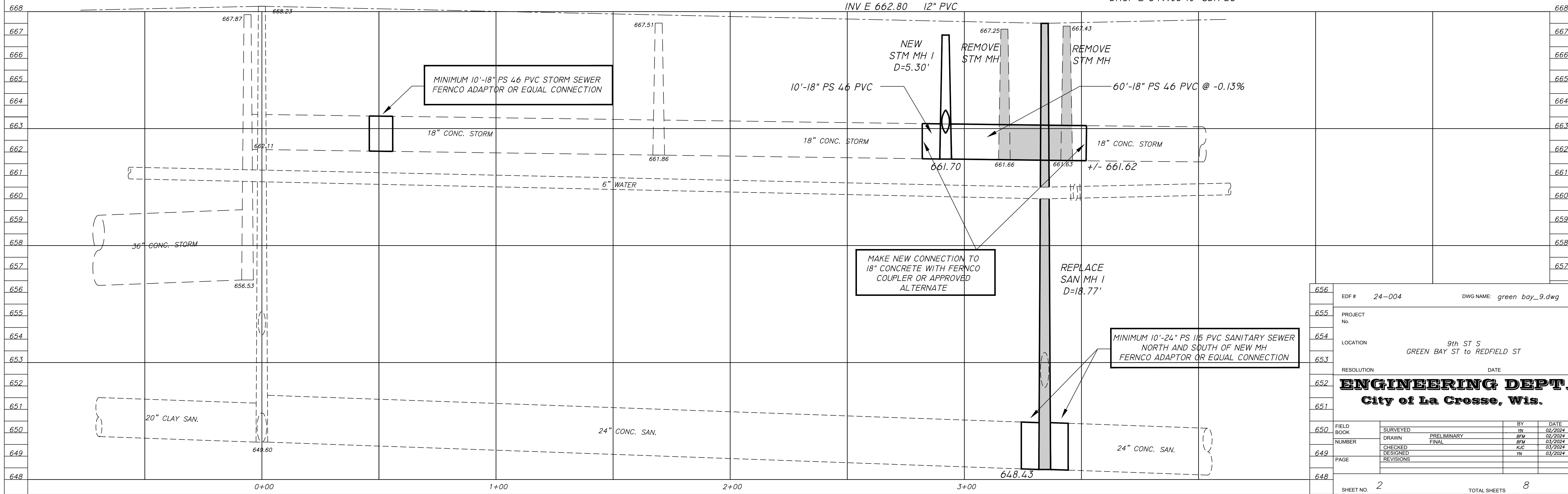
SCALE: 1"=20' H
1"= 2' V



6" DUCTILE STORM ASSUMED TO BE ABANDONED. CONTRACTOR TO EXPOSE AT MAIN AND CITY SEWER DEPT TO VIEW WITH CAMERA TO VERIFY. REPAIR WITH 10'-18" PS 46 AND FERNCO ADAPTERS OR EQUAL

- CB 1
STA 2+92
TYPE A
FL 666.60
INV E 663.00 12" PVC
- CB 2
STA 2+92
TYPE A
FL 666.60
INV W 663.00 12" PVC
INV N 663.00 12" PVC
- CB 3
STA 3+67
TYPE A
FL 666.65
INV S 663.15 12" PVC

- STM MH 1
STA 2+92
RIM 667.00
INV N 661.70 18" PVC
INV S 661.70 18" PVC
INV W 662.80 12" PVC
INV E 662.80 12" PVC
- SAN MH 1
STA 3+34
RIM 667.20
INV N 648.43 24" PS 115
INV S 648.43 24" PS 115
INV E 651.93 15" SDR 26
DROP E 649.03 10" SDR 26



MINIMUM 10'-18" PS 46 PVC STORM SEWER FERNCO ADAPTOR OR EQUAL CONNECTION

MAKE NEW CONNECTION TO 18" CONCRETE WITH FERNCO COUPLER OR APPROVED ALTERNATE

MINIMUM 10'-24" PS 115 PVC SANITARY SEWER NORTH AND SOUTH OF NEW MH FERNCO ADAPTOR OR EQUAL CONNECTION

656	EDF # 24-004	DWG NAME: green_bay_9.dwg
655	PROJECT No.	
654	LOCATION	9th ST S GREEN BAY ST TO REDFIELD ST
653	RESOLUTION	DATE
652	ENGINEERING DEPT.	
651	City of La Crosse, Wis.	
650	FIELD BOOK	SURVEYED
649	NUMBER	DRAWN
648	PAGE	CHECKED
		DESIGNED
		REVISIONS
	SHEET NO. 2	TOTAL SHEETS 8