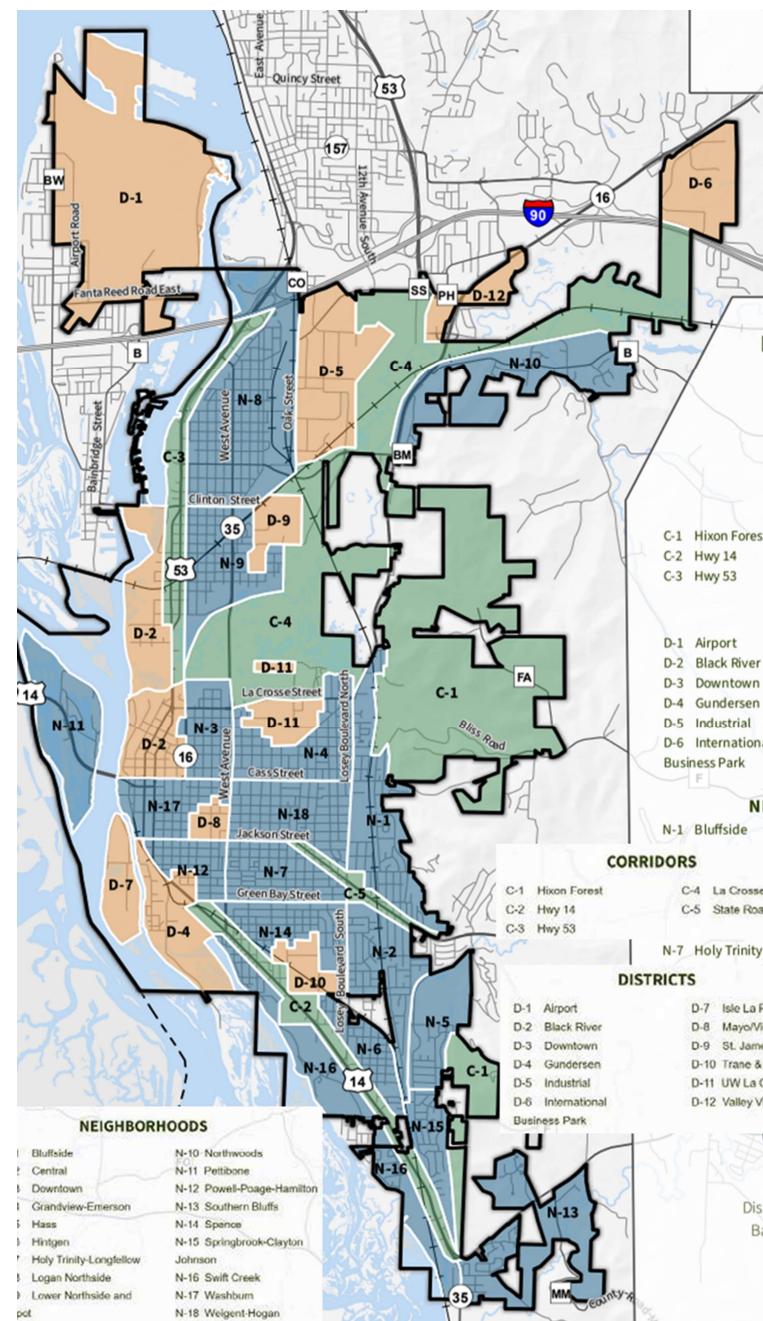


# Built Form Study | Neighborhoods

Based on the Comprehensive Plan NDC framework, the Built Form Study samples the typical development pattern for each of the neighborhoods, districts and corridors as identified in the comp plan to better understand the physical dimensions of building type, site plan, street frontage and block pattern as well as other conditions.

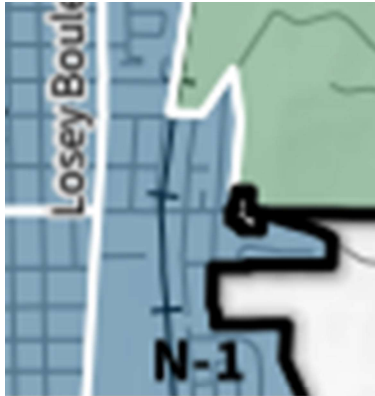
## Neighborhoods

- N-1 thru N-18
- N-2 Central, N-3 Downtown and N-11 Pettibone are addressed in the Character Areas analysis



## Built Form Study | Plate N-1: R1 Neighborhood East of Losey Blvd N

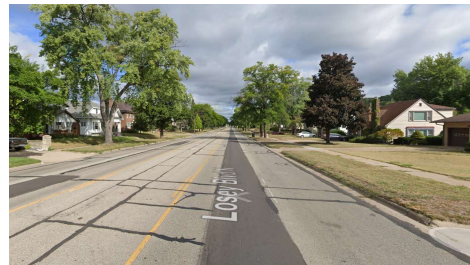
### NDC Framework: Neighborhoods



### Urban Pattern



### Built Form Examples



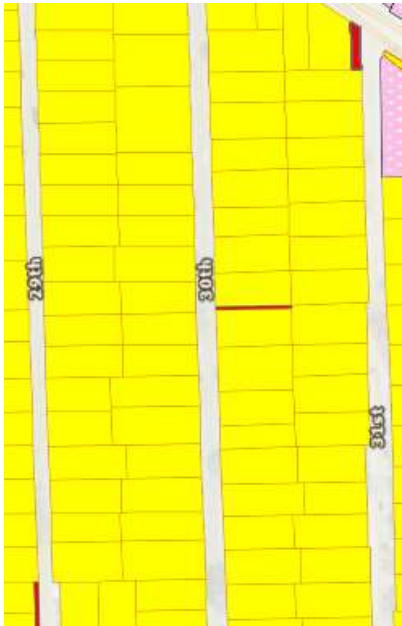
### Notes

- Existing zoning: R1 Single Family
- Character area: contemporary neighborhood
- Key intersection: Losey Blvd & State St
- Parcel pattern: Residential lots in warped-grid layout and cul-de-sacs; most lots are 60-100 feet wide and <0.5 acres
- Scale: 1-2 story single-family buildings
- Yards: 35-foot front yard setback
- Parking: Private off-street
- Materials: Lap siding (vinyl and wood), brick, stone veneer
- Street: Losey Blvd has 100-foot ROW with 6-foot sidewalks on each side and 12-foot road verges; roads have no sidewalks
- Service Drive: Front-loaded
- Bluffside Tavern embedded in the SF neighborhood



## Built Form Study | Plate N-2: Central

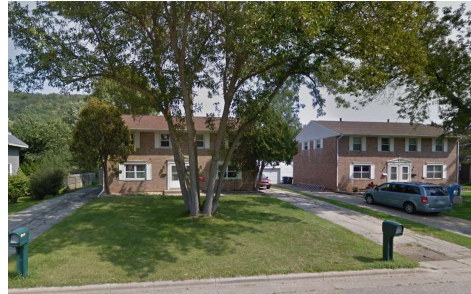
### NDC Framework: Neighborhoods



### Urban Pattern



### Built Form Examples

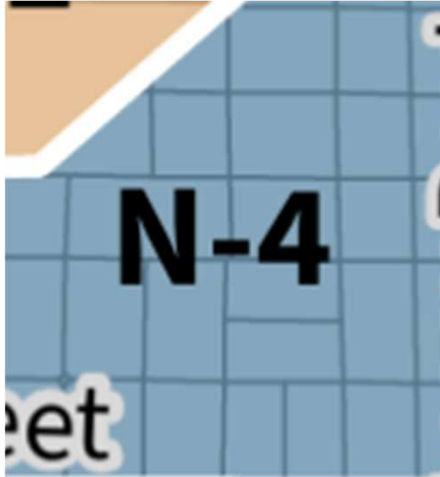


### Notes

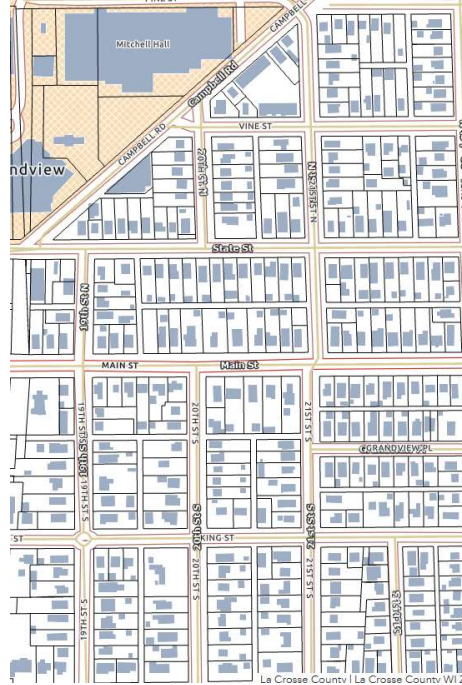
- Existing zoning: R1 Single Family
- Character area: Traditional neighborhood
- Key intersection: State Rd & 31st St
- Parcel pattern: Small rectangular lots; most lots are 70-85 feet wide and 140-150 feet deep
- Scale: 1-2 story single-family buildings with a few 2-story multi-family duplexes
- Yards: 15-30 foot front yard setback (from front property line); small rear yards
- Parking: Garages and driveways accessible from main streets; parallel parking on each side of street
- Materials: Lap siding (vinyl and wood), masonry
- Street: 40-foot ROW with no sidewalks; curb cuts for driveways with 5-foot grass road verges
- Service Drive: Front-loaded

## Built Form Study | Plate N-4: Grandview Emerson

### NDC Framework: Neighborhoods



### Urban Pattern



### Built Form Examples



### Notes

- Existing zoning: R1 Single Family
- Character area: Traditional neighborhood
- Key intersection: N/A
- Parcel pattern: Small rectangular lots with alley access in rear; most lots are 30-50 feet wide and 140-150 feet deep
- Scale: 1-3 story multi-tenant rental homes; 1-2 story single-family homes
- Yards: 20-foot front yard setback (from sidewalk); small rear yards (or additional parking) with garages on alley
- Parking: Garages and driveways accessible from main streets and alleys; parallel parking on each side of street
- Materials: Vinyl lap siding, brick
- Street: 65-foot ROW with 6-foot sidewalk on each side; curb cuts for driveways with 8-foot grass road verges
- Alley/Service Drive: 20 ft ROW, paved concrete typ.



## Built Form Study | Plate N-4.1: Grandview Emerson

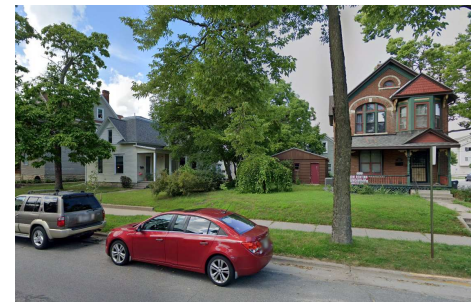
### NDC Framework: Neighborhoods



### Urban Pattern



### Built Form Examples

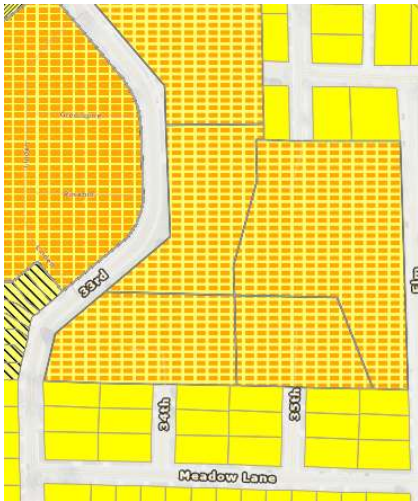


### Notes

- Existing zoning: R1 Single Family, R2 Residence, R5 Multiple Dwelling, C1 Local Business, TND Traditional Neighborhood Development
- Character area: Student housing and neighborhood retail/restaurants
- Key intersection: State St & Campbell Rd
- Parcel pattern: Small rectangular lots with alley access in rear; most lots are 50-60 feet wide and 150 feet deep; some lots are divided width-wise into halves/thirds with depths of 50-100 feet each; neighborhood commercial fronting State St and Campbell Rd
- Scale: 2-3 story multi-tenant rental homes and apartment buildings; 1-2 story single-family homes, 1 story commercial with flat roofs
- Yards: 15-foot front yard setback (from sidewalk); small rear yards (or additional parking) with garages on alley
- Parking: Garages and driveways accessible from main streets and alleys; parallel parking on each side of street, surface parking behind multi-tenant buildings
- Materials: Vinyl lap siding, brick, stucco
- Street: 65-foot ROW with 6-foot sidewalk on each side; curb cuts for driveways with 8-foot grass road verges
- Alley/Service Drive: 20 ft ROW, paved concrete typ.

## Built Form Study | Plate N-5: Hass

### NDC Framework: Neighborhoods



### Urban Pattern



### Built Form Examples



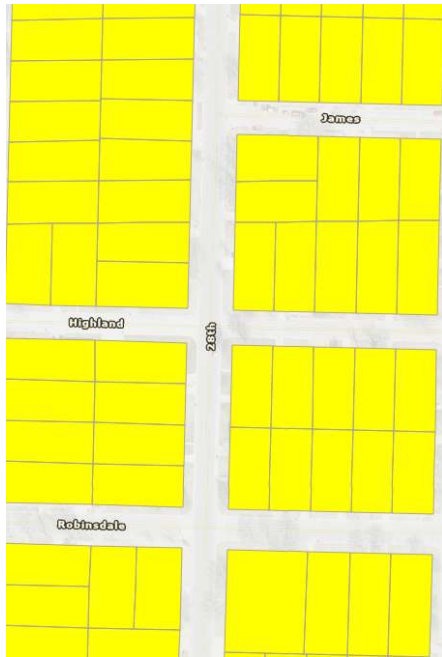
### Notes

- Existing zoning: PD Planned Development
- Character area: Contemporary neighborhood
- Key intersection: N/A
- Parcel pattern: Large multi-structure lots fronting public/private roads and surface parking lots
- Scale: 2-story multi-family residential buildings and twinhomes
- Yards: 15-20 foot structure setback from road frontage or shared surface parking
- Parking: Surface lots for multi-family structures, private driveways for twinhomes
- Materials: Lap siding (vinyl and wood), brick
- Street: Most streets have 60-foot ROW with no sidewalks; 33<sup>rd</sup> St S has 6-foot sidewalk on western side and 8-foot road verge
- Service Drive: Front-loaded for twinhomes



## Built Form Study | Plate N-6: Hingten

### NDC Framework: Neighborhoods



### Urban Pattern



### Built Form Examples



### Notes

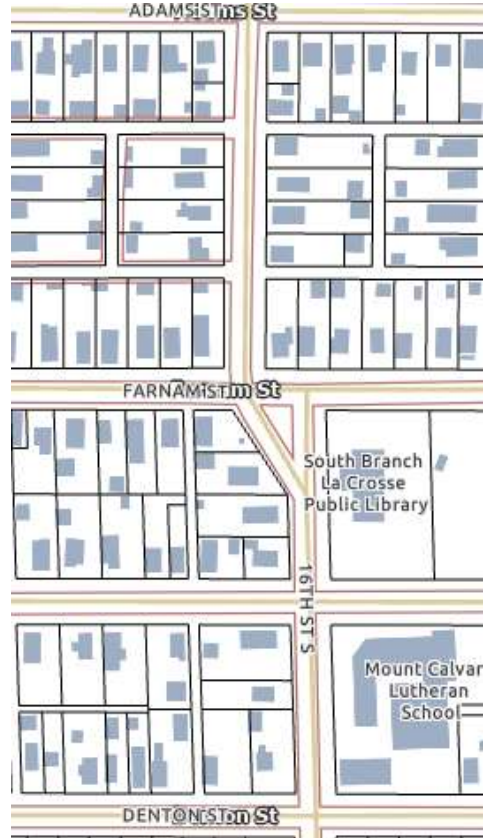
- Existing zoning: R1 Single Family
- Character area: Traditional neighborhood
- Key intersection: N/A
- Parcel pattern: Small rectangular lots that are 60 feet wide and 120-135 feet deep
- Scale: 1-2 story single-family buildings
- Yards: 20-25 foot front yard setback (from front property line); small rear yards
- Parking: Garages and driveways accessible from main; parallel parking on each side of street
- Materials: Lap siding (vinyl and wood), masonry
- Street: Highland St has 50-foot ROW and north-south streets have 65-foot ROW; inconsistent sidewalk coverage from property to property
- Service Drive: Front-loaded

## Built Form Study | Plate N-7 : Holy Trinity-Longfellow

### NDC Framework: Neighborhoods



### Urban Pattern



### Built Form Examples



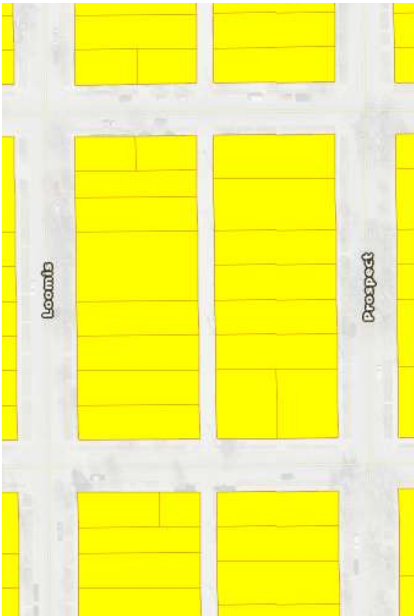
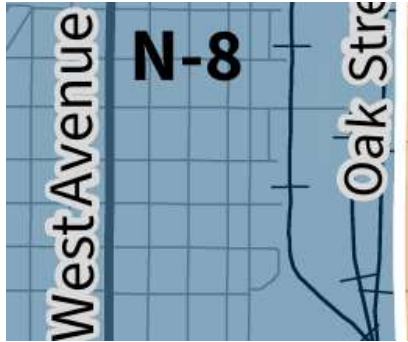
### Notes

- Existing zoning: R1 Single Family, R2 Residence, PS Public and Semi-Public
- Character area: Traditional neighborhood
- Key intersection: N/A
- Parcel pattern: Small rectangular lots that are 50 feet wide and 130-170 feet deep
- Scale: 1-2 story single-family buildings
- Yards: 15-foot front yard setback (from sidewalk, if applicable); small rear yards with garages on alley
- Parking: Garages and driveways accessible from main streets and alleys; parallel parking on each side of street
- Materials: Lap siding (vinyl and wood), masonry
- Street: 65-foot ROW with 6-foot sidewalk on each side; curb cuts for driveways with 9-foot grass road verges
- Service Drive: 20 ft ROW, paved concrete typ.



## Built Form Study | Plate N-8: Logan Northside

### NDC Framework: Neighborhoods



### Urban Pattern



### Built Form Examples

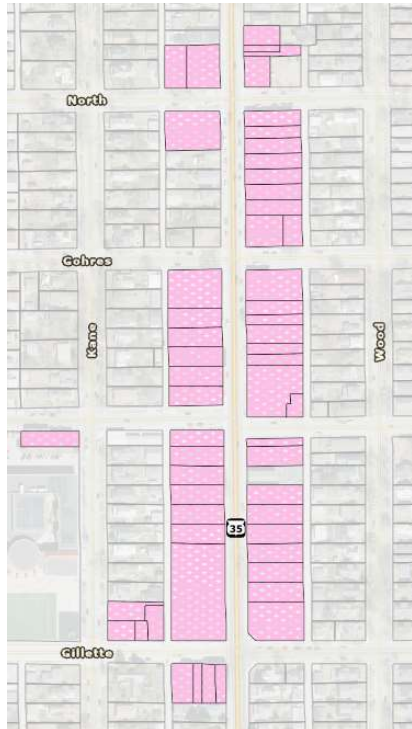


### Notes

- Existing zoning: R1 Single Family
- Character area: Traditional neighborhood
- Key intersection: N/A
- Parcel pattern: Small rectangular lots with alley access in rear; most lots are 40-60 feet wide and 140 feet deep; some lots are double-wide (80 feet); some lots are divided width-wise with depths of 70 feet each
- Scale: 1-2 story single-family buildings
- Yards: 10-foot front yard setback (from sidewalk); small rear yards with garages on alley
- Parking: Garages and driveways accessible from main streets and alleys; parallel parking on each side of street
- Materials: Lap siding (vinyl and wood)
- Street: 70-foot ROW with 6-foot sidewalk on each side; curb cuts for driveways with 10-foot grass road verges
- Alley/Service Drive: 20 ft ROW, paved concrete typ.

## Built Form Study | Plate N-8.1: Logan Northside (George St Commercial)

### NDC Framework: Neighborhoods



### Urban Pattern



### Built Form Examples



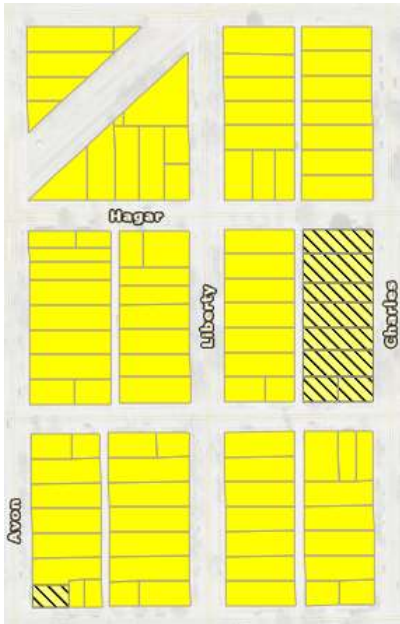
### Notes

- Existing zoning: C1 Local Business
- Character area: Traditional shopping street
- Key intersection: George St & Gillette St
- Parcel pattern: incremental, small lot typically alley loaded; some curb cuts from George; common residential lots are 50 feet wide; some residential lots measure 30 feet wide
- Scale: 1 and 2 story retail and residential buildings; commercial buildings tend to have flat roofs and transparent shopfronts
- Yards: Zero lot line for commercial structures; shallow setback for residential along George
- Parking: several surface lots front onto George
- Materials: brick, stucco, lap siding—vinyl and wood
- Street: 64 foot ROW; curb and gutter with sidewalk back of curb; narrow grassed boulevards here and there
- Alley/Service Drive: 20 ft ROW, paved concrete typ.



## Built Form Study | Plate N-9: Lower Northside and Depot

### NDC Framework: Neighborhoods



### Urban Pattern



### Built Form Examples

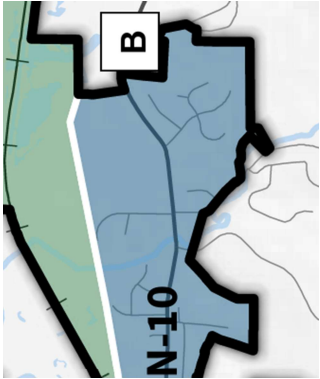


### Notes

- Existing zoning: R1 Single Family, R2 Residential
- Character area: Traditional neighborhood
- Key intersection: Hagar St & Avon St
- Parcel pattern: Small rectangular lots with alley access in rear; most lots are 40-55 feet wide and 140 feet deep; some lots are divided width-wise with depths of 70 feet each
- Scale: 1-2 story single-family buildings
- Yards: 15-25 foot front yard setback (from sidewalk); small rear yards with garages on alley
- Parking: Garages and driveways accessible from main streets and alleys; parallel parking on each side of street
- Materials: Lap siding (vinyl and wood), masonry
- Street: 60-foot ROW with 6-foot sidewalk on each side; curb cuts for driveways with 5-foot grass road verges
- Alley/Service Drive: 15-20 foot ROW, paved concrete typ.

## Built Form Study | Plate N-10: Northwoods

### NDC Framework: Neighborhoods



### Urban Pattern



### Built Form Examples



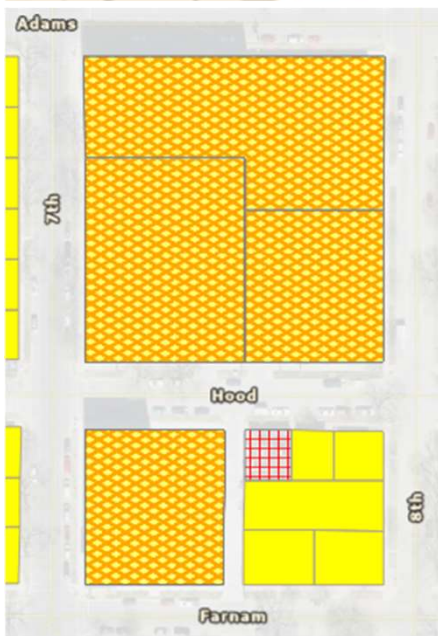
### Notes

- Existing zoning: R1 Single Family
- Character area: Contemporary neighborhood
- Key intersection: CH B & Sablewood Rd
- Parcel pattern: Residential lots in dendritic layout
- Scale: 1-2 story single-family homes
- Yards: 40-foot front yard setback
- Parking: Driveways accessible from subdivision roads
- Materials: Vinyl lap siding, brick, stone veneer
- Street: 65-foot ROW with 6-foot sidewalk on one side; curb cuts for driveways with grass road verges
- Service: Front loaded



## Built Form Study | Plate N-12: Powell-Poage Hamilton

### NDC Framework: Neighborhoods



### Urban Pattern



### Built Form Examples



### Notes

- Existing zoning: TND Traditional Neighborhood Development, C2 Commercial, & R1 Single Family
- Character area: Urban Mixed
- Key intersection: 7<sup>th</sup> St & Farnam St
- Parcel pattern: Large lots with apartment buildings with large parking lots and small rectangular and square single-family residential lots
- Scale: 3-4 story apartment buildings; 1-2 story single-family buildings; 1-story commercial buildings with flat roofs
- Yards: 5-15 feet front yard setback (from sidewalk for apartments); large surface parking lots behind apartments
- Parking: Several large surface lots front onto Hood St and 8<sup>th</sup> St and garages and driveways accessible from main streets and alleys; parallel parking on each side of street
- Materials: Vinyl lap siding, brick, stucco
- Street: 65-foot ROW with 6-foot sidewalk on each side; curb cuts for driveways with 7-8-foot grass road verges
- Alley/Service Drive: 20-foot ROW alley, paved concrete typ and service drives off Hood st (see top 3 images)

**Built Form Study | Plate N-14: Spence**

## NDC Framework: Neighborhoods



## Urban Pattern



## Built Form Examples



## Notes

- Existing zoning: R1 Single Family
- Character area: Traditional neighborhood
- Key intersection: N/A
- Parcel pattern: Small rectangular lots that are 50-60 feet wide and 100-130 feet deep from ROW line
- Scale: 1-2 story single-family buildings
- Yards: 15-25 front yard setback (from sidewalk, if applicable); small rear yards with garages on alley
- Parking: Garages and driveways accessible from main streets and alleys; parallel parking on each side of street
- Materials: Lap siding (vinyl and wood), masonry
- Street: 65-foot ROW with 6-foot sidewalk on each side; curb cuts for driveways with 9-foot grass road verges
- Alley/Service Drive: 16-foot ROW, paved concrete typ a few gravel and a few front-loaded



## Built Form Study | Plate N-15: Springbrook-Clayton Johnson

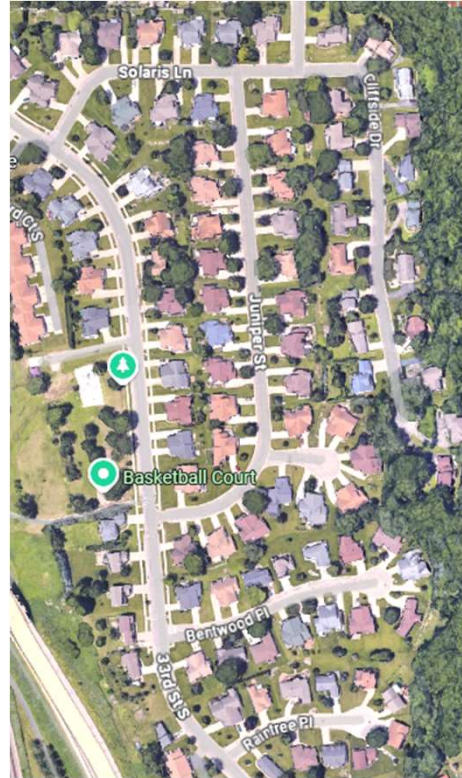
### NDC Framework: Neighborhoods



### Urban Pattern



### Built Form Examples

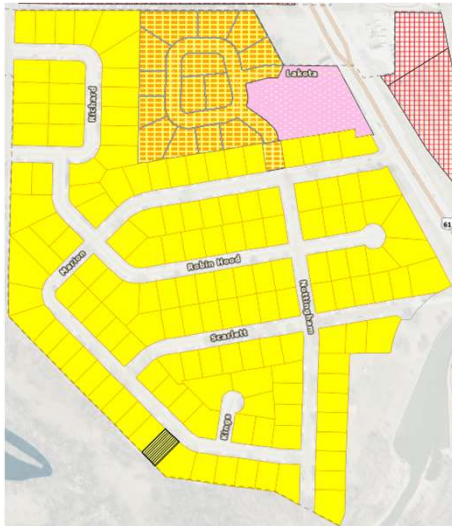


### Notes

- Existing zoning: N/A
- Character area: contemporary neighborhood
- Key intersection: 33<sup>rd</sup> St S and Solaris
- Parcel pattern: 85 ft wide lots typical
- Scale: 1 story; some taller
- Yards: 25 foot front yard setback (from front property line)
- Parking: Driveways accessible from streets; parallel parking on each side of streets
- Materials: Lap siding (vinyl and wood), masonry
- Street: 60 foot ROW with sidewalks on most streets but not all;
- Service Drive: Front-loaded

## Built Form Study | Plate N-16: Swift Creek

### NDC Framework: Neighborhoods



### Urban Pattern



### Built Form Examples



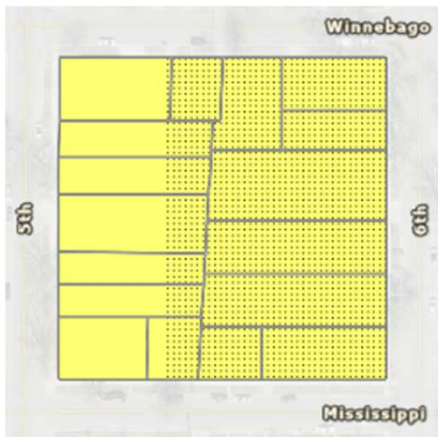
### Notes

- Existing zoning: R1 Single Family, PD Planned Development, & C1 Local Business
- Character area: Contemporary neighborhood
- Key intersection: US-35 & N Marion Rd
- Parcel pattern: Small rectangular lots; most lots are 75-85 feet wide and 95-115 feet deep from ROW line
- Scale: 1-2 story single-family buildings with 11 1-story multi-family duplexes/triplexes/quadplexes in Lakota PI development area
- Yards: 15-30 foot front yard setback (from ROW line); rear yards varying between 30-50 feet; 20 foot front yard setback (from ROW line) and 10-15 feet rear yard setback in Lakota PI duplexes/triplex/quadplex
- Parking: Garages and driveways accessible from main streets; parallel parking on each side of street
- Materials: Lap siding (vinyl and wood), masonry
- Street: 40-foot ROW with no sidewalks; curb cuts for driveways with 5-foot grass road verges
- Service Drive: Front-loaded

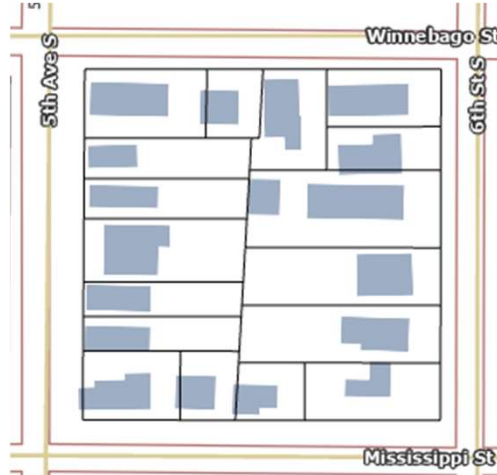


## Built Form Study | Plate N-17: Washburn

### NDC Framework: Neighborhoods



### Urban Pattern



### Built Form Examples

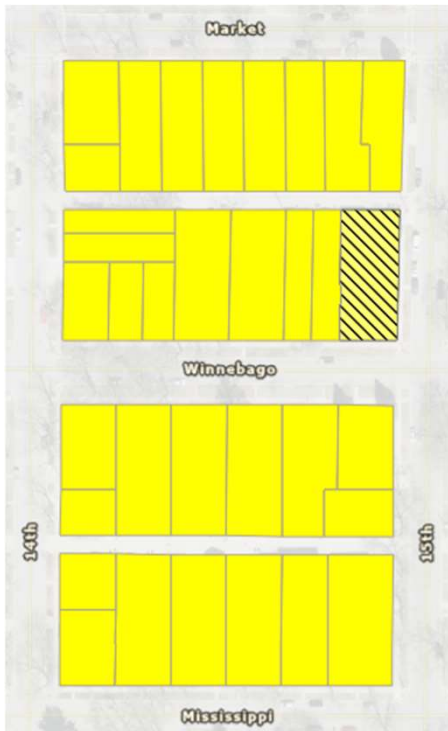
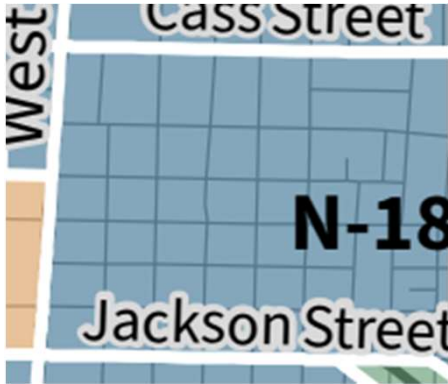


### Notes

- Existing zoning: R1 Single Family & WR Washburn Residential
- Character area: Traditional neighborhood
- Key intersection: N/A
- Parcel pattern: Small rectangular lots that are 50-60 feet wide and 140-145 feet deep from ROW line
- Scale: 1-2 story single-family buildings, two 2-story apartments, and scattered 1-2 story commercial buildings
- Yards: 10-20 front yard setback (from sidewalk, if applicable); 100 foot rear yard setback (on average)
- Parking: Garages and driveways accessible from main streets; parallel parking on each side of street
- Materials: Lap siding (vinyl and wood), masonry
- Street: 65-foot ROW with 6-foot sidewalk on each side; curb cuts for driveways with 8-foot grass road verges
- Service Drive: Front-loaded

## Built Form Study | Plate N-18: Weigent Hogan

### NDC Framework: Neighborhoods



### Urban Pattern



### Built Form Examples



### Notes

- Existing zoning: R1 Single Family & WR Washburn Residential
- Character area: Traditional neighborhood
- Key intersection: N/A
- Parcel pattern: Small rectangular lots that are 60 feet wide and 140 feet deep from ROW line
- Scale: 2-3 story single-family buildings
- Yards: 10-20 front yard setback (from sidewalk, if applicable); 50-70 foot rear yard setback (70 foot on average)
- Parking: Garages and driveways accessible from main streets and alleys; parallel parking on each side of street
- Materials: Lap siding (vinyl and wood), masonry
- Street: 65-70-foot ROW with 6-foot sidewalk on each side; curb cuts for driveways with 8-10-foot grass road verges
- Alley/Service Drive: 20-foot ROW, paved concrete typ a few gravel and a few front-loaded