

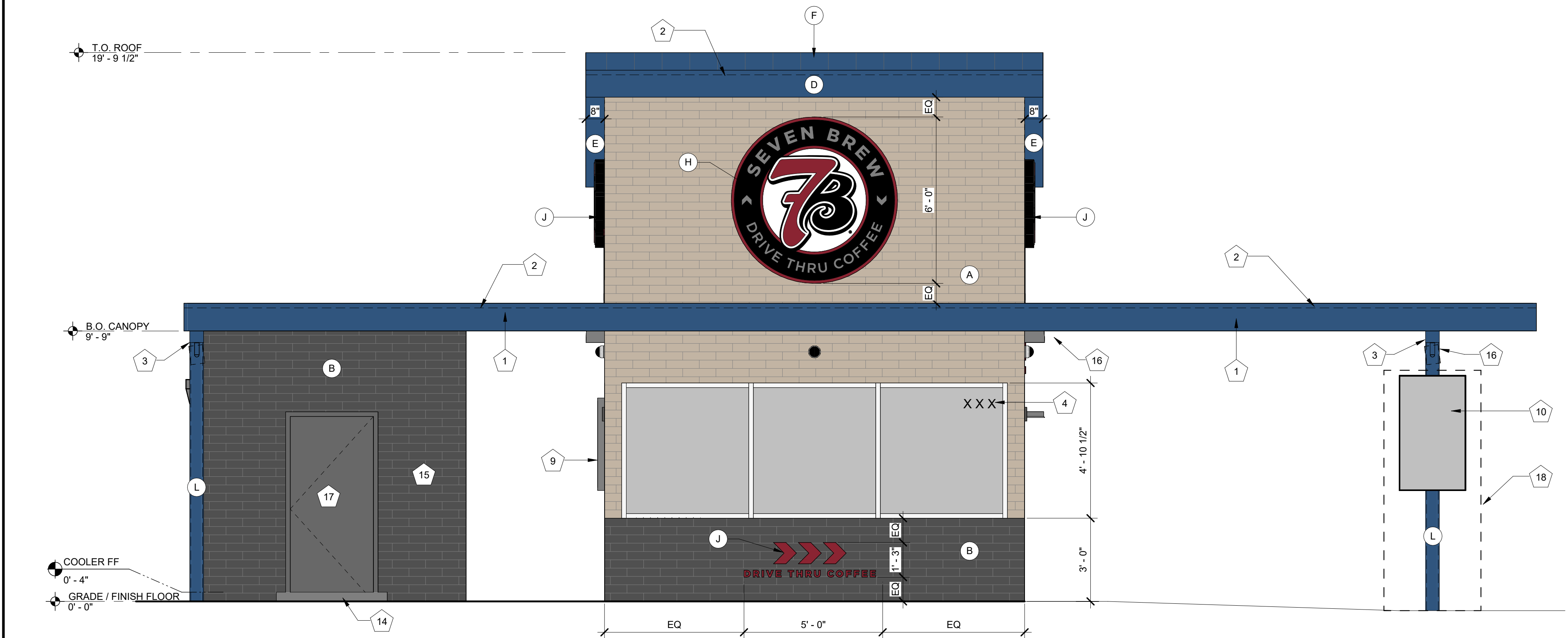
2 EXTERIOR ELEVATION - NORTH
3/8" = 1'-0"

EXTERIOR ELEVATION KEYNOTES

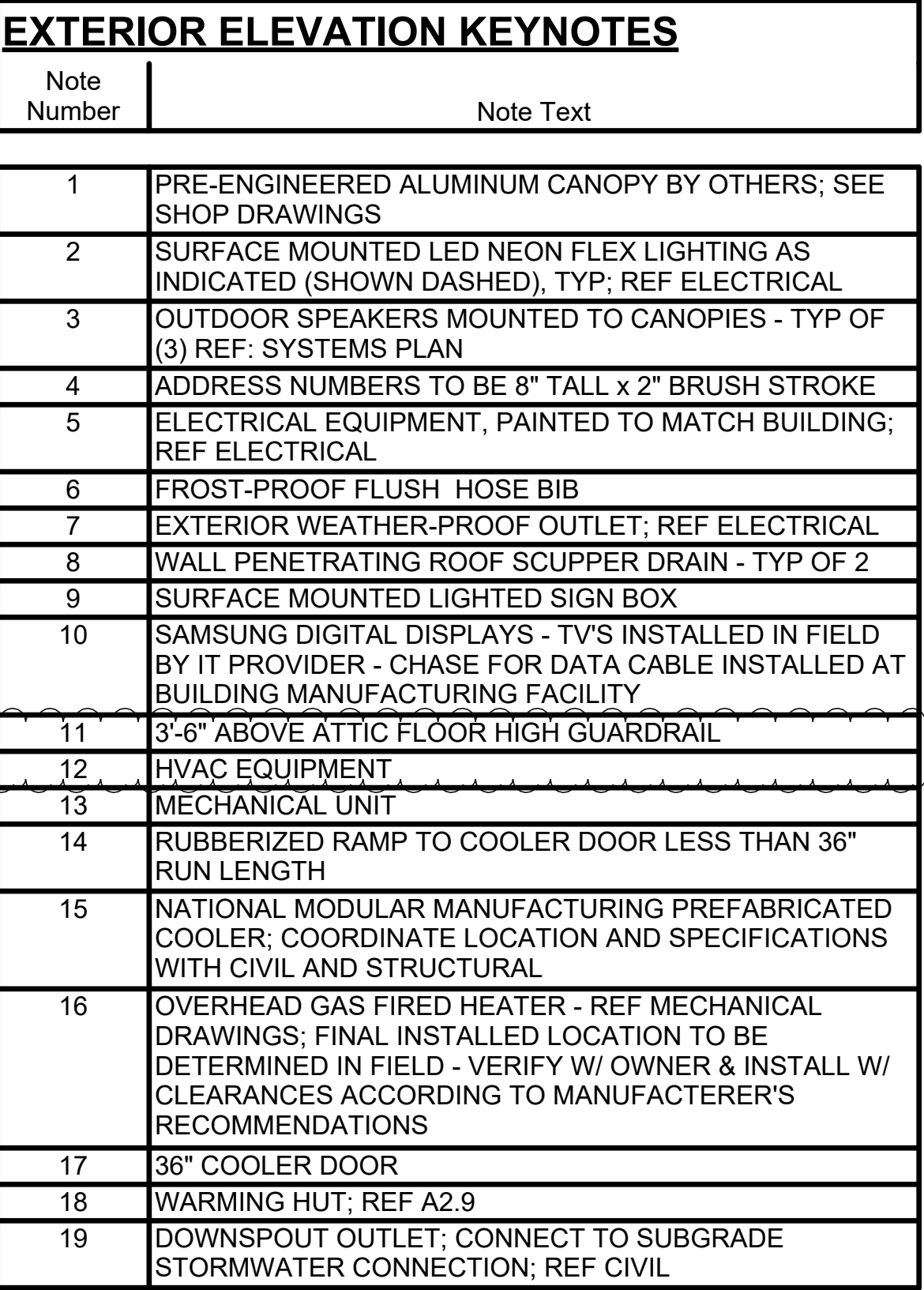
Note Number	Note Text
1	PRE-ENGINEERED ALUMINUM CANOPY BY OTHERS; SEE SHOP DRAWINGS
2	SURFACE MOUNTED LED NEON FLEX LIGHTING AS INDICATED (SHOWN DASHED), TYP; REF ELECTRICAL
3	OUTDOOR SPEAKERS MOUNTED TO CANOPIES - TYP OF (3) REF: SYSTEMS PLAN
4	ADDRESS NUMBERS TO BE 8" TALL x 2" BRUSH STROKE
5	ELECTRICAL EQUIPMENT, PAINTED TO MATCH BUILDING; REF ELECTRICAL
6	FROST-PROOF FLUSH HOSE BIB
7	EXTERIOR WEATHER-PROOF OUTLET; REF ELECTRICAL
8	WALL PENETRATING ROOF SCUPPER DRAIN - TYP OF 2
9	SURFACE MOUNTED LIGHTED SIGN BOX
10	SAMSUNG DIGITAL DISPLAYS - TV'S INSTALLED IN FIELD BY IT PROVIDER - CHASE FOR DATA CABLE INSTALLED AT BUILDING MANUFACTURING FACILITY
11	3'-6" ABOVE ATTIC FLOOR HIGH GUARDRAIL
12	HVAC EQUIPMENT
13	MECHANICAL UNIT
14	RUBBERIZED RAMP TO COOLER DOOR LESS THAN 36" RUN LENGTH
15	NATIONAL MODULAR MANUFACTURING PREFABRICATED COOLER; COORDINATE LOCATION AND SPECIFICATIONS WITH CIVIL AND STRUCTURAL
16	OVERHEAD GAS FIRED HEATER - REF MECHANICAL DRAWINGS; FINAL INSTALLED LOCATION TO BE DETERMINED IN FIELD - VERIFY W/ OWNER & INSTALL W/ CLEARANCES ACCORDING TO MANUFACTURER'S RECOMMENDATIONS
17	36" COOLER DOOR
18	WARMING HUT; REF A2.9
19	DOWNSPOUT OUTLET; CONNECT TO SUBGRADE STORMWATER CONNECTION; REF CIVIL

EXTERIOR ELEVATION MATERIALS LEGEND

Note Number	Note Text
A	ARCHITECTURAL CEMENT BOARD SIDING (BRK-1)
B	ARCHITECTURAL CEMENT BOARD SIDING (BRK-2)
D	BRAKE METAL FASCIA (MP-2)
E	STANDING SEAM ROOF PANELS (MP-2)
F	SOFFIT PANELS (MP-2)
G	METAL BRAKE CAP (MP-3)
H	ROUND STOREFRONT SIGN; SUPPLIED AND INSTALLED BY SIGN CONTRACTOR
J	1/4" THICK ACRYLIC SIGNAGE APPLIED TO SIDING WITH VH DOUBLE SIDE TAPE
K	ILLUMINATED STOREFRONT SIGNAGE BY SIGN CONTRACTOR
L	PAINTED STRUCTURAL CANOPY COLUMN; RAINWATER DOWNSPOUT WITHIN; CONNECT BASE OF CANOPY COLUMN TO STORMWATER MANAGEMENT SYSTEM; REF CIVIL
M	PAINTED STRUCTURAL CANOPY COLUMN; REF CIVIL
N	EXPOSED DOWNSPOUT, GALVANIZED, PAINTED; CONNECT TO SUB-GRADE STORM WATER COLLECTION SYSTEM; REF CIVIL



1 EXTERIOR ELEVATION - SOUTH
3/8" = 1'-0"

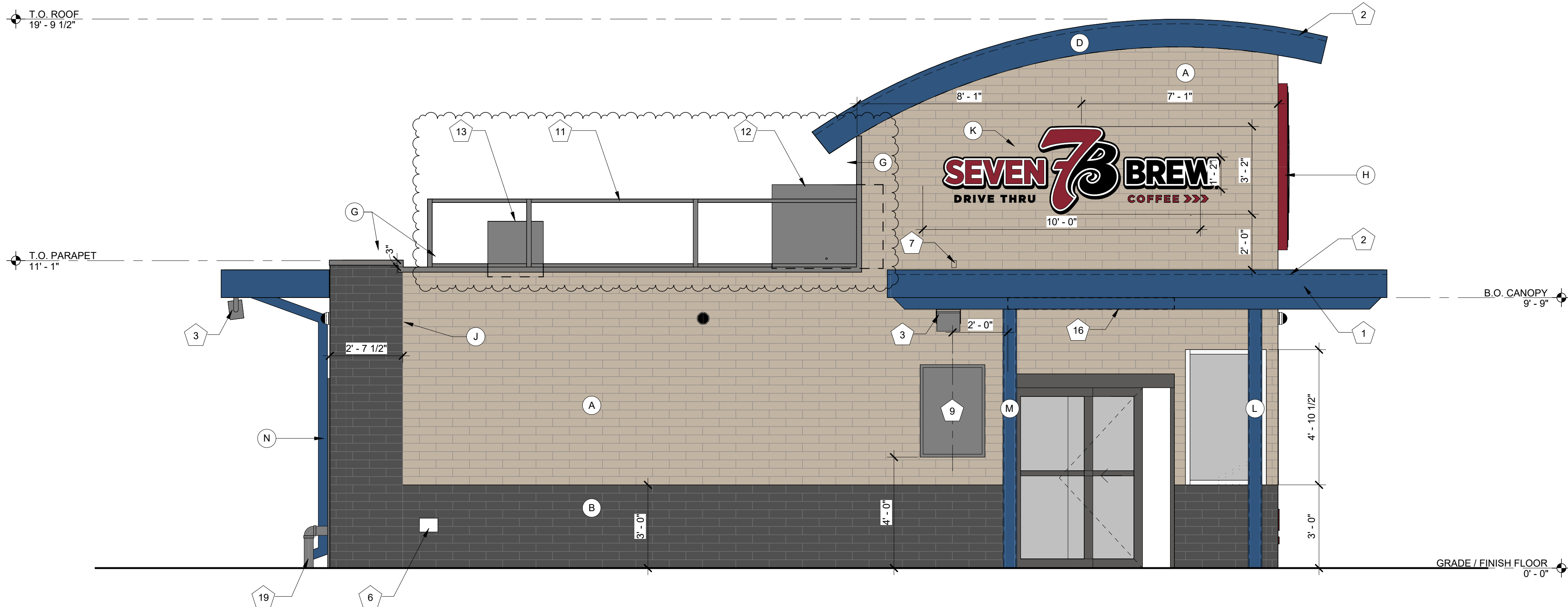


2	COOLER ELEVATION - EAST SIDE
	3/8" = 1'-0"





2 EXTERIOR ELEVATION - WEST SIDE W/ COOLER
3/8" = 1'-0"



1 EXTERIOR ELEVATION - WEST SIDE
3/8" = 1'-0"

EXTERIOR ELEVATION KEYNOTES

Note Number	Note Text
1	PRE-ENGINEERED ALUMINUM CANOPY BY OTHERS; SEE SHOP DRAWINGS
2	SURFACE MOUNTED LED NEON FLEX LIGHTING AS INDICATED (SHOWN DASHED), TYP; REF ELECTRICAL
3	OUTDOOR SPEAKERS MOUNTED TO CANOPIES - TYP OF (3) REF: SYSTEMS PLAN
4	ADDRESS NUMBERS TO BE 8" TALL x 2" BRUSH STROKE
5	ELECTRICAL EQUIPMENT, PAINTED TO MATCH BUILDING; REF ELECTRICAL
6	FROST-PROOF FLUSH HOSE BIB
7	EXTERIOR WEATHER-PROOF OUTLET; REF ELECTRICAL
8	WALL PENETRATING ROOF SCUPPER DRAIN - TYP OF 2
9	SURFACE MOUNTED LIGHTED SIGN BOX
10	SAMSUNG DIGITAL DISPLAYS - TV'S INSTALLED IN FIELD BY IT PROVIDER - CHASE FOR DATA CABLE INSTALLED AT BUILDING MANUFACTURING FACILITY
11	3'-6" ABOVE ATTIC FLOOR HIGH GUARDRAIL
12	HVAC EQUIPMENT
13	MECHANICAL UNIT
14	RUBBERIZED RAMP TO COOLER DOOR LESS THAN 36" RUN LENGTH
15	NATIONAL MODULAR MANUFACTURING PREFABRICATED COOLER; COORDINATE LOCATION AND SPECIFICATIONS WITH CIVIL AND STRUCTURAL
16	OVERHEAD GAS FIRED HEATER - REF MECHANICAL DRAWINGS; FINAL INSTALLED LOCATION TO BE DETERMINED IN FIELD - VERIFY W/ OWNER & INSTALL W/ CLEARANCES ACCORDING TO MANUFACTURER'S RECOMMENDATIONS
17	36" COOLER DOOR
18	WARMING HUT; REF A2.9
19	DOWNSPOUT OUTLET; CONNECT TO SUBGRADE STORMWATER CONNECTION; REF CIVIL

EXTERIOR ELEVATION MATERIALS LEGEND

Note Number	Note Text
A	ARCHITECTURAL CEMENT BOARD SIDING (BRK-1)
B	ARCHITECTURAL CEMENT BOARD SIDING (BRK-2)
D	BRAKE METAL FASCIA (MP-2)
E	STANDING SEAM ROOF PLANELS (MP-2)
F	SOFFIT PANELS (MP-2)
G	METAL BRAKE CAP (MP-3)
H	ROUND STOREFRONT SIGN; SUPPLIED AND INSTALLED BY SIGN CONTRACTOR
J	1/4" THICK ACRYLIC SIGNAGE APPLIED TO SIDING WITH VH DOUBLE SIDE TAPE
K	ILLUMINATED STOREFRONT SIGNAGE BY SIGN CONTRACTOR
L	PAINTED STRUCTURAL CANOPY COLUMN; RAINWATER DOWNSPOUT WITHIN; CONNECT BASE OF CANOPY COLUMN TO STORMWATER MANAGEMENT SYSTEM; REF CIVIL
M	PAINTED STRUCTURAL CANOPY COLUMN; REF CIVIL
N	EXPOSED DOWNSPOUT, GALVANIZED, PAINTED; CONNECT TO SUB-GRADE STORM WATER COLLECTION SYSTEM; REF CIVIL