

MATCHLINE - SHEET C-005

52 LINEAR FEET OF PROPOSED 2-1.25" HDPE CONDUIT FOR FIBER VIA DIRECTIONAL BORE (SEE STANDARD CONSTRUCTION DETAILS SHEET)

52 LINEAR FEET OF PROPOSED 1-1.25" HDPE CONDUIT FOR FIBER VIA DIRECTIONAL BORE (SEE STANDARD CONSTRUCTION DETAILS SHEET)

STA: 0+52
PROPOSED DB-11X11X10 COMMUNICATIONS HANDHOLE (SEE STANDARD CONSTRUCTION DETAILS SHEET)

STA: 3+98
PROPOSED TB-13X24X15 COMMUNICATIONS HANDHOLE (SEE STANDARD CONSTRUCTION DETAILS SHEET)

NOTE:

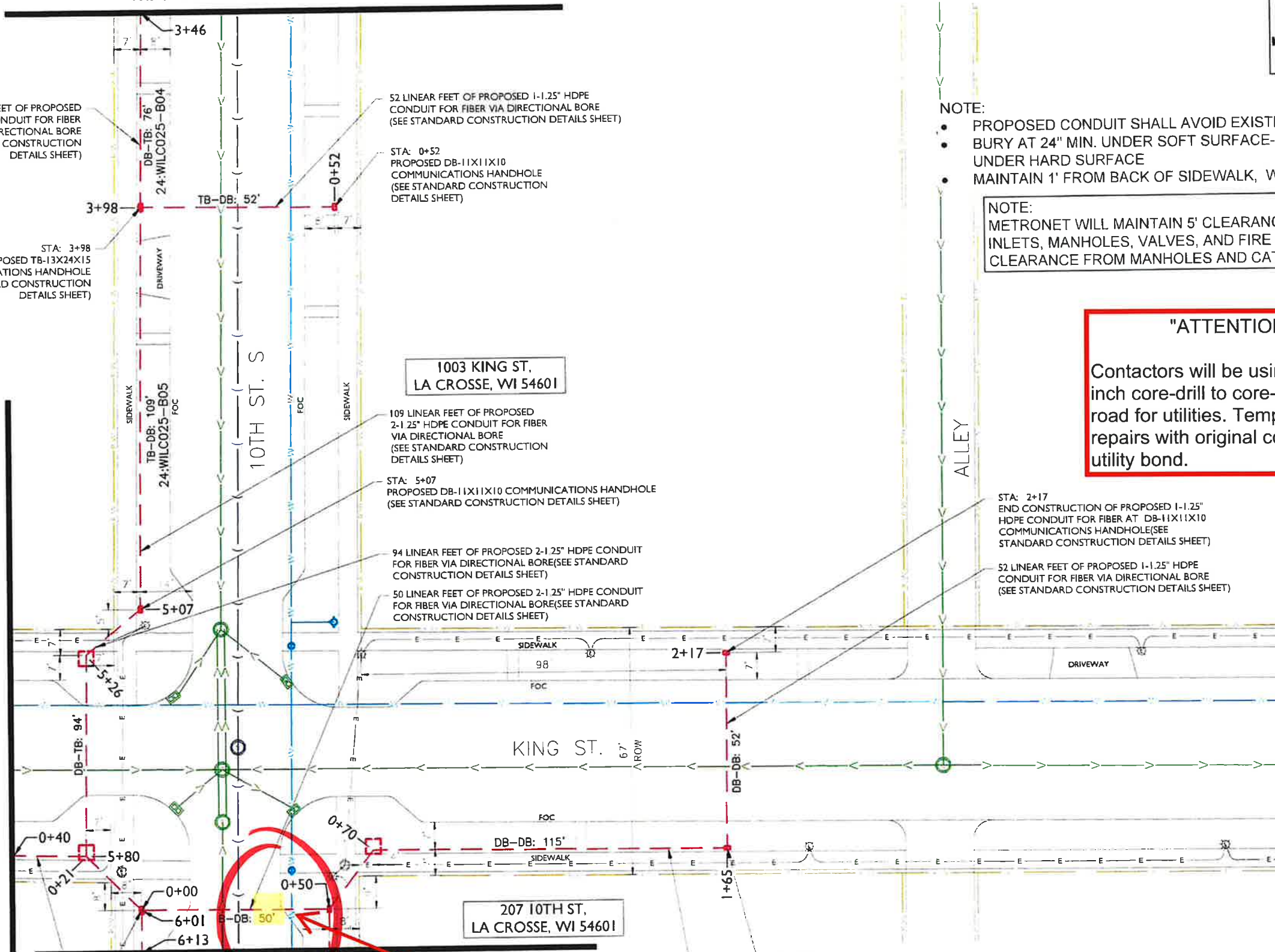
- PROPOSED CONDUIT SHALL AVOID EXISTING SEEPAGE BEDS
- BURY AT 24" MIN. UNDER SOFT SURFACE-BURY AT 36" MIN. UNDER HARD SURFACE
- MAINTAIN 1' FROM BACK OF SIDEWALK, WHEN APPLICABLE.

NOTE:
METRONET WILL MAINTAIN 5' CLEARANCE FROM EXISTING INLETS, MANHOLES, VALVES, AND FIRE HYDRANTS & 7.5' CLEARANCE FROM MANHOLES AND CATCH BASINS.

"ATTENTION"

Contractors will be using a 10 inch core-drill to core-drill in the road for utilities. Temporary repairs with original core and utility bond.

MATCHLINE - SHEET C-007



1003 KING ST,
LA CROSSE, WI 54601

207 10TH ST,
LA CROSSE, WI 54601

Spot #1

*** PAVED IN 2020**



metronet
3701 COMMUNICATIONS WAY
EVANSVILLE, IN. 47715

Fullerton
1100 E WOODFIELD ROAD, SUITE 500
SCHAUMBURG, ILLINOIS 60173
TEL: 847-908-8400
DESIGN FIRM NO. 184.008202-0006
www.fullerton-us.com

REV	DATE	DESCRIPTION	BY
A	09/19/23	ISSUED FOR REVIEW	NS

I HEREBY CERTIFY THAT THESE DRAWINGS WERE PREPARED BY ME OR UNDER MY DIRECT SUPERVISION AND CONTROL, AND TO THE BEST OF MY KNOWLEDGE AND BELIEF COMPLY WITH THE REQUIREMENTS OF ALL APPLICABLE CODES

TASK NAME
WILC025-U-S1

TASK DESCRIPTION
FIBER OPTIC CONDUIT PLACEMENT

PROJECT AREA
LACROSSE, WI, USA

SHEET SCALE
1" = 30'-0"

SHEET TITLE
DESIGN LAYOUT

GRID NUMBER

SHEET NUMBER
C-008



MATCHLINE - SHEET C-006



metronet
3701 COMMUNICATIONS WAY
EVANSVILLE, IN. 47715

Fullerton
1100 E WOODFIELD ROAD, SUITE 500
SCHAUMBURG, ILLINOIS 60173
TEL: 847-908-8400
DESIGN FIRM NO. 184,008202-0006
www.fullerton-us.com

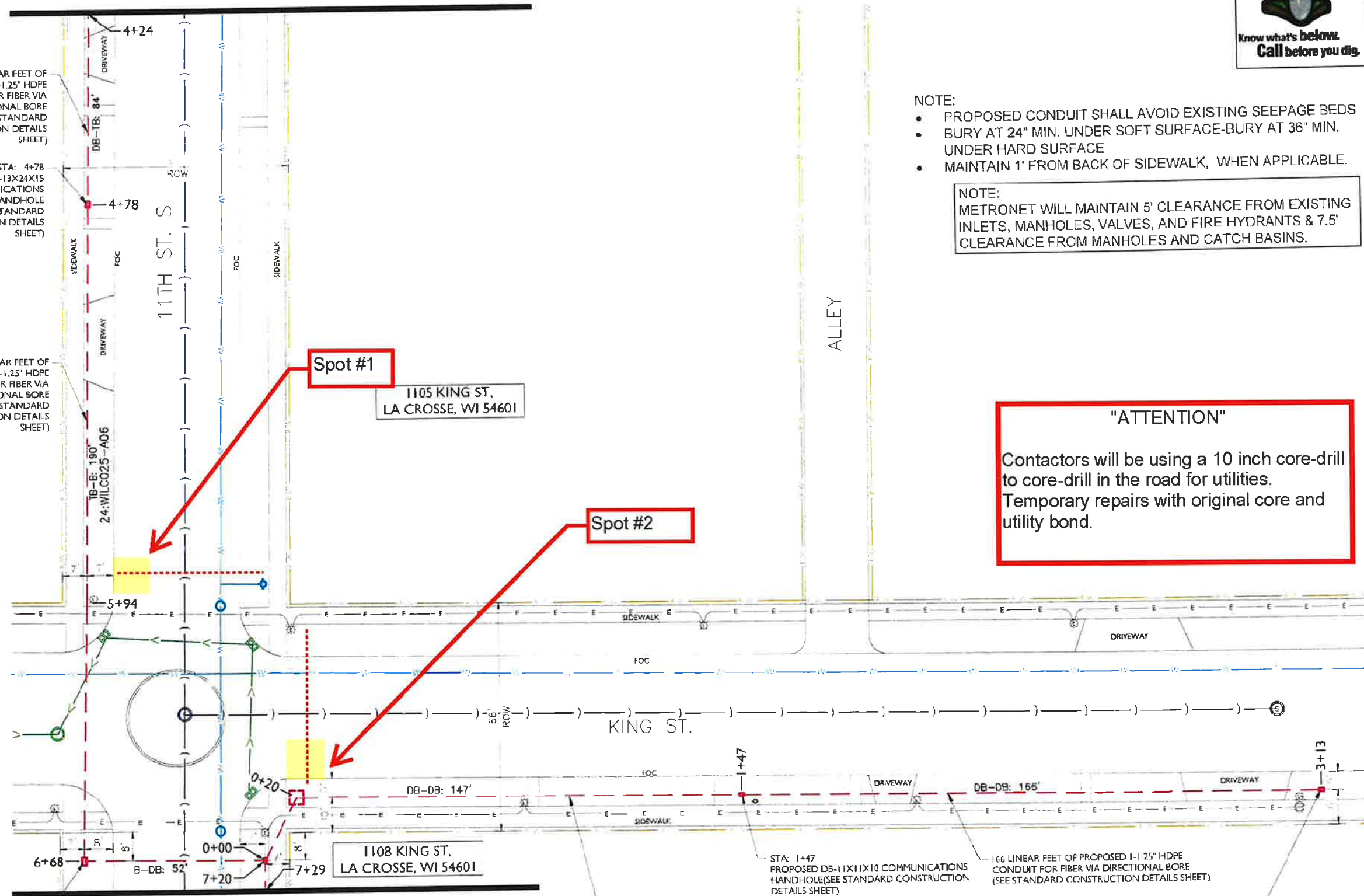
- NOTE:
- PROPOSED CONDUIT SHALL AVOID EXISTING SEEPAGE BEDS
 - BURY AT 24" MIN. UNDER SOFT SURFACE-BURY AT 36" MIN. UNDER HARD SURFACE
 - MAINTAIN 1' FROM BACK OF SIDEWALK, WHEN APPLICABLE.

NOTE:
METRONET WILL MAINTAIN 5' CLEARANCE FROM EXISTING INLETS, MANHOLES, VALVES, AND FIRE HYDRANTS & 7.5' CLEARANCE FROM MANHOLES AND CATCH BASINS.

54 LINEAR FEET OF PROPOSED 2-1.25" HDPE CONDUIT FOR FIBER VIA DIRECTIONAL BORE (SEE STANDARD CONSTRUCTION DETAILS SHEET)

STA: 4+78 PROPOSED TB-13X24X15 COMMUNICATIONS HANDHOLE (SEE STANDARD CONSTRUCTION DETAILS SHEET)

190 LINEAR FEET OF PROPOSED 2-1.25" HDPE CONDUIT FOR FIBER VIA DIRECTIONAL BORE (SEE STANDARD CONSTRUCTION DETAILS SHEET)



"ATTENTION"
Contractors will be using a 10 inch core-drill to core-drill in the road for utilities. Temporary repairs with original core and utility bond.

REV	DATE	DESCRIPTION	BY
A	08/19/23	ISSUED FOR REVIEW	NS

I HEREBY CERTIFY THAT THESE DRAWINGS WERE PREPARED BY ME OR UNDER MY DIRECT SUPERVISION AND CONTROL, AND TO THE BEST OF MY KNOWLEDGE AND BELIEF COMPLY WITH THE REQUIREMENTS OF ALL APPLICABLE CODES.

TASK NAME
WILC025-U-S1

TASK DESCRIPTION
FIBER OPTIC CONDUIT PLACEMENT

PROJECT AREA
LACROSSE, WI, USA

SHEET SCALE
1" = 30'-0"

SHEET TITLE
DESIGN LAYOUT

GRID NUMBER

SHEET NUMBER
C-009

MATCHLINE - SHEET C-011

STA: 6+68 PROPOSED B-17X30X18 COMMUNICATIONS HANDHOLE (SEE STANDARD CONSTRUCTION DETAILS SHEET)

147 LINEAR FEET OF PROPOSED 1-1.25" HDPE CONDUIT FOR FIBER VIA DIRECTIONAL BORE (SEE STANDARD CONSTRUCTION DETAILS SHEET)

166 LINEAR FEET OF PROPOSED 1-1.25" HDPE CONDUIT FOR FIBER VIA DIRECTIONAL BORE (SEE STANDARD CONSTRUCTION DETAILS SHEET)

STA: 3+13 END CONSTRUCTION OF PROPOSED 1-1.25" HDPE CONDUIT FOR FIBER AT DB-11X11X10 COMMUNICATIONS HANDHOLE (SEE STANDARD CONSTRUCTION DETAILS SHEET)

