

2025 21st St N State St to Campbell Rd Utility Upgrades

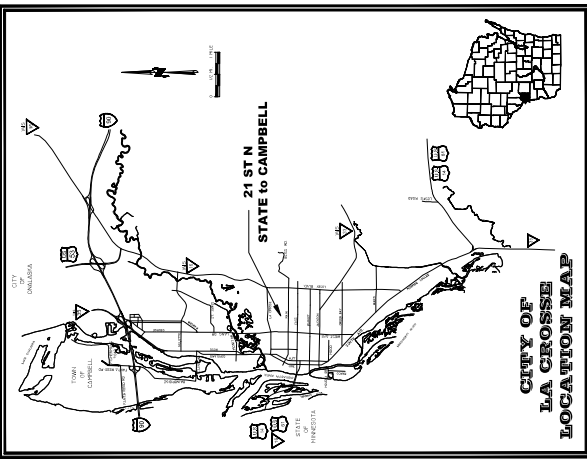
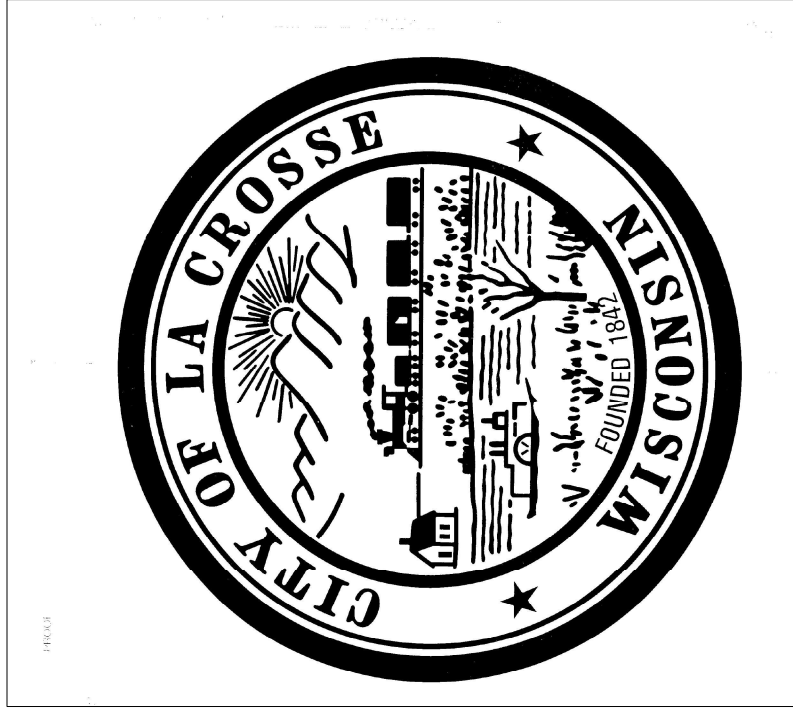
Form 25-000 Document Title: 21st St to Campbell Rd
 PROJECT No. 0322
 LOCAL No. UTILITY SERVICES
 LOCATION 21st St
 STATE ST to CAMPBELL RD
 REGULATION DATE
 ENGINEERING DEPT.
 City of La Crosse, Wis.

PREPARED BY DATE
 Design 03/20/25
 Designer M.M. 03/20/25
 Checked by K.C. 03/20/25
 Approved S.S. 03/20/25
 Revisions _____

APPROVED _____
 DATE _____ (Signature)
 AUTHORIZED BY CITY ENGINEER _____
 DATE _____ (Signature)

SHEET #	TITLE
1	Cover Sheet
2	Utility Plan Profile
3	Utility Plan Profile
4	Curb & Gutter Plan Profile
5	Curb & Gutter Plan Profile
6	Utility Detail
7	Traffic Control Plan
8	Sanitary Sewer Detail
9	Storm Sewer Detail
10	Water Service Lateral Detail
11	Concrete Pavement - Curb & Gutter Detail
12	Erosion Control Detail
13	Curb Ramp Guidance
14	Curb Ramps
15	Pedestrian Curb

BENCHMARKS
 NAVD 1988
 TOP-NUT-OF-HYDRAMANT
 21st St & State St 671.14
 21st St & Vine St 673.59
 21st St & Campbell Rd 676.28



NEW ROUTE NOTES ON SHEET 2

SEE UTILITY DETAIL SHEET #6 FOR INTERSECTION WATER & CATCH BASIN INFORMATION

A NEW MANHOLE WILL BE BUILT WEST OF EXISTING LOCATION. A NEW 96 FIBER & 50 PAIR COPPER WILL BE PLACED THRU THE NEW ROUTE. A MANHOLE: 20 FIBER, 32 FIBER AND 300 PAIR COPPER WILL BE ABANDONED IN THE OLD ROUTE

1ST ADDN TO SPIERS ADDN BLK 2

VINE ST

PLACE NEW BRIGHTSPEED MANHOLE OVER EXISTING CONDUITS

EXISTING CABLE & CONDUITS TO REMAIN

PLACE NEW BRIGHTSPEED HAND HOLE UNDER SIDEWALK

6" X 6" TEES, 6" VALVES, 6" D.I.

DIRECTIONAL BORE 2-2 INCH CONDUITS THRU NEW ROUTE

ALL SANITARY LATERALS ON THE WEST SIDE TO BE TAKEN INTO THE MIDDLE OF BLDG AND RECONNECTED TO EXISTING SERVICE (TYPICAL)

BRIGHTSPEED CABLE & CONDUITS TO BE ABANDONED IN PLACE

TAP NEW WATER SERVICES TO 4" MAIN 1" CURB STOP, ROD AND BOX RECONNECT EXISTING WATER SERVICE (TYPICAL)

ALL SANITARY LATERALS ON THE EAST SIDE TO BE RECONNECTED TO EXISTING SERVICE TO THE MAIN (TYPICAL)

PLACE NEW BRIGHTSPEED HAND HOLE UNDER SIDEWALK

EXISTING BRIGHTSPEED MANHOLE TO BE ABANDONED IN PLACE

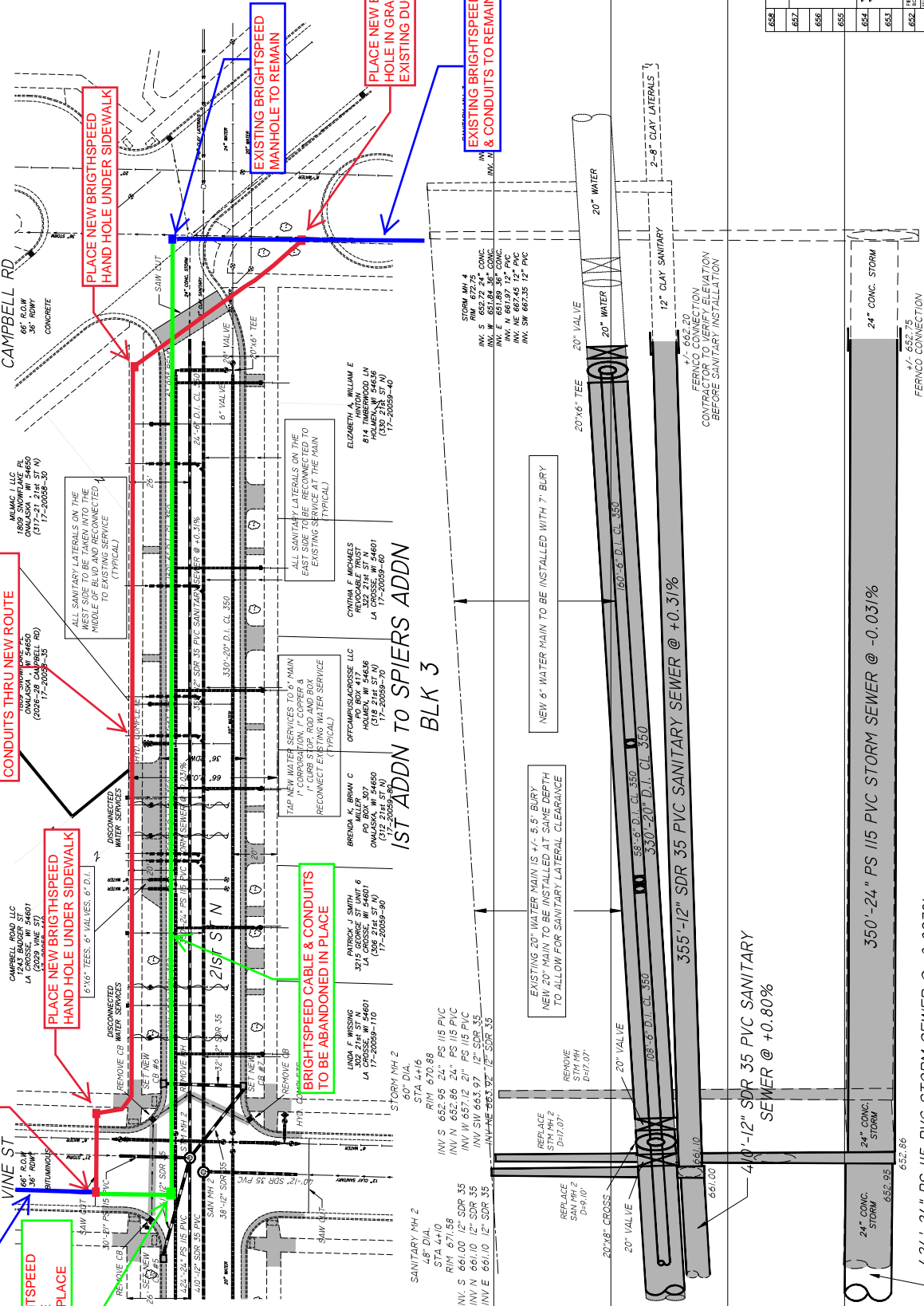
PLACE NEW BRIGHTSPEED HAND HOLE UNDER SIDEWALK

EXISTING BRIGHTSPEED MANHOLE TO REMAIN

EXISTING BRIGHTSPEED CABLE & CONDUITS TO REMAIN

PLACE NEW BRIGHTSPEED HAND HOLE IN GRASSY AREA OVER EXISTING DUCTS

EXISTING BRIGHTSPEED CABLE & CONDUITS TO REMAIN



4.24'-24" PS I15 PVC STORM SEWER @ -0.097%

4.0'-12" SDR 35 PVC SANITARY SEWER @ +0.80%

355'-12" SDR 35 PVC SANITARY SEWER @ +0.31%

350'-20" D.I. CL. 350

108'-6" D.I. CL. 350

12" CLAY SANITARY

24" CONC. STORM

24" CONC. STORM

NO.	DESCRIPTION	DATE
659	REVISED	
658	REVISED	
657	REVISED	
656	REVISED	
655	REVISED	
654	REVISED	
653	REVISED	
652	REVISED	
651	REVISED	
650	REVISED	
649	REVISED	

659	214 STREET N
658	214 STREET N
657	214 STREET N
656	214 STREET N
655	214 STREET N
654	214 STREET N
653	214 STREET N
652	214 STREET N
651	214 STREET N
650	214 STREET N
649	214 STREET N

659	214 STREET N
658	214 STREET N
657	214 STREET N
656	214 STREET N
655	214 STREET N
654	214 STREET N
653	214 STREET N
652	214 STREET N
651	214 STREET N
650	214 STREET N
649	214 STREET N

659	214 STREET N
658	214 STREET N
657	214 STREET N
656	214 STREET N
655	214 STREET N
654	214 STREET N
653	214 STREET N
652	214 STREET N
651	214 STREET N
650	214 STREET N
649	214 STREET N