

2015 Street Projects: Complete Street Report



8th St. from Cameron to Division



West Ave from Maple to Bennett



**10th St. from Jackson to
Mississippi**



Main St. from 7th to 11th St.



19th St. from Market to Jackson



Liberty St. from Rublee to Gillette



13th St. from Townsend to Chase



7th St. from Cass to Division



Kane St from Clinton to St. Paul



Farnam St. from 6th to 7th.



**River Valley Dr. from Palace S. to
bride approach.**



29th Court from 3400 block to 31st St.



**Miller St. from McCumber to
Jansky Pl.**



**Commerce St. from Enterprise to
North End**



13th St. from Redfield to Green Bay



15th St. from State to Main



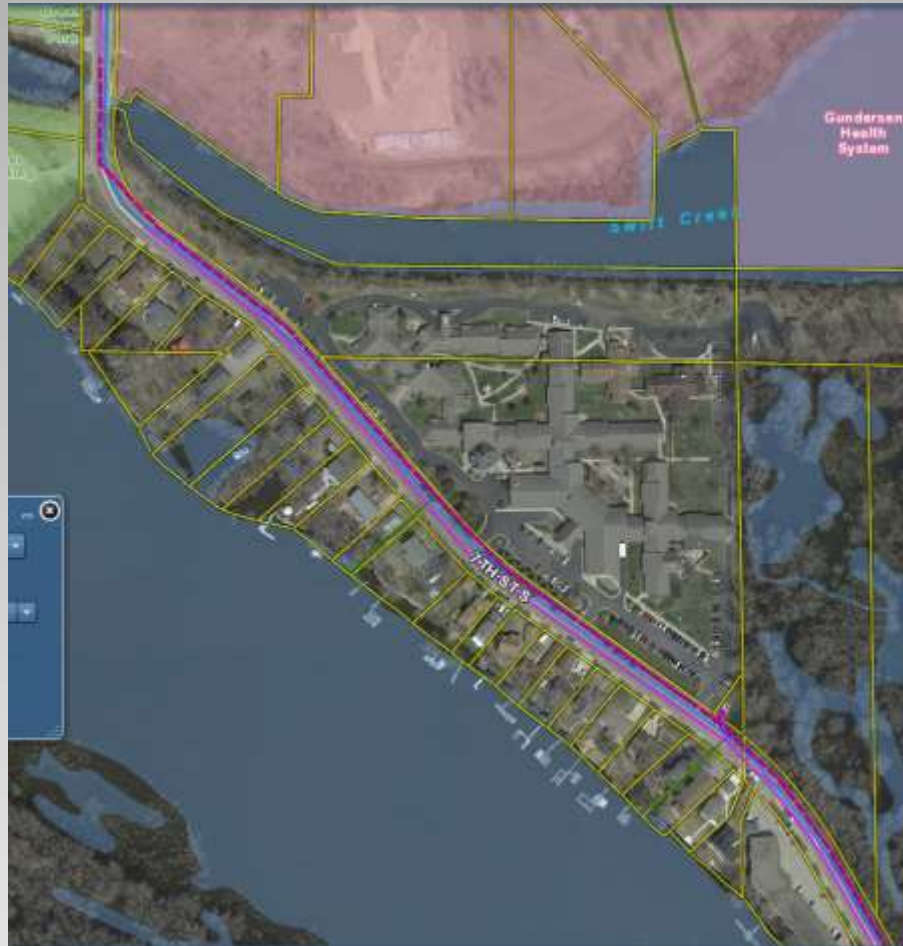
15th St. from King to Cass



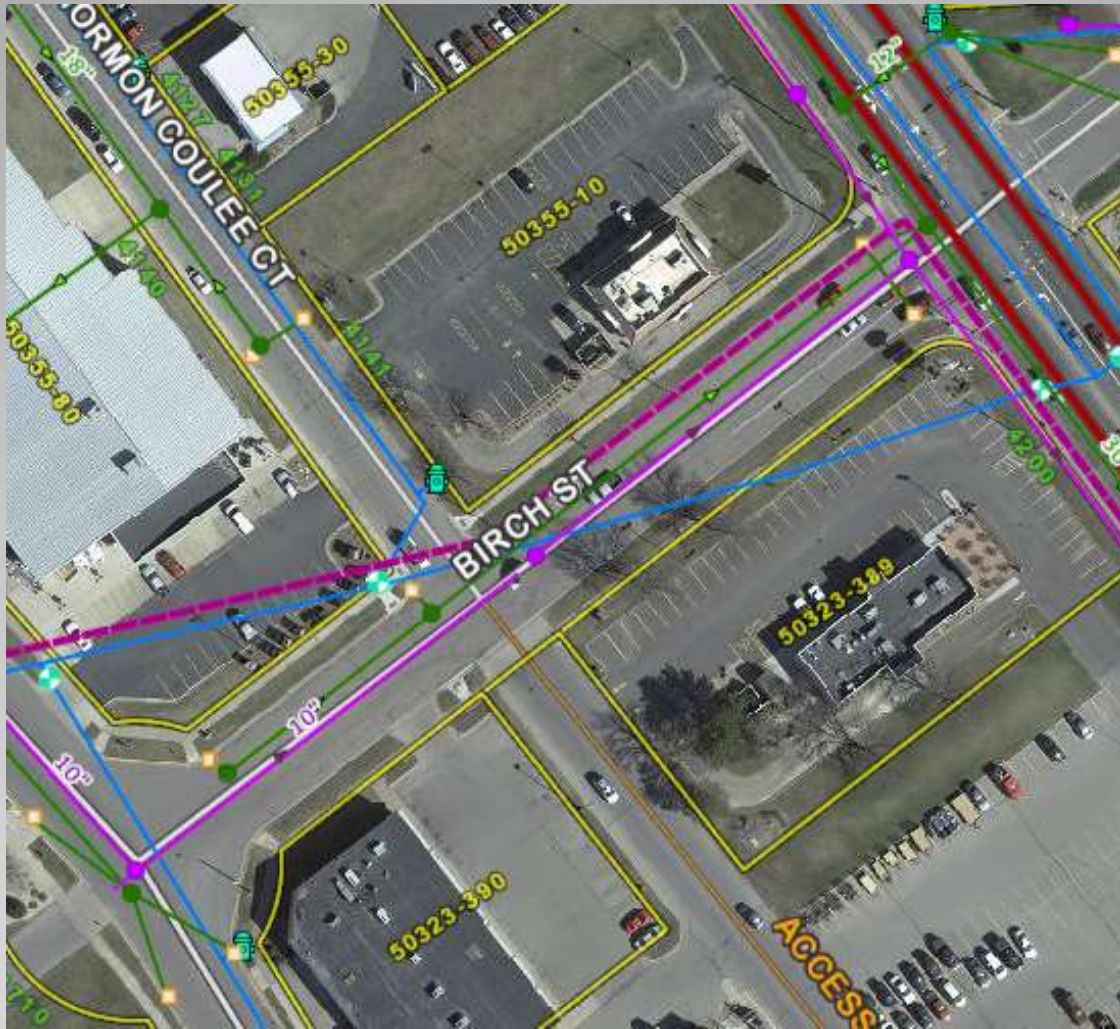
21st St. and Horton from 19th Street to Weston



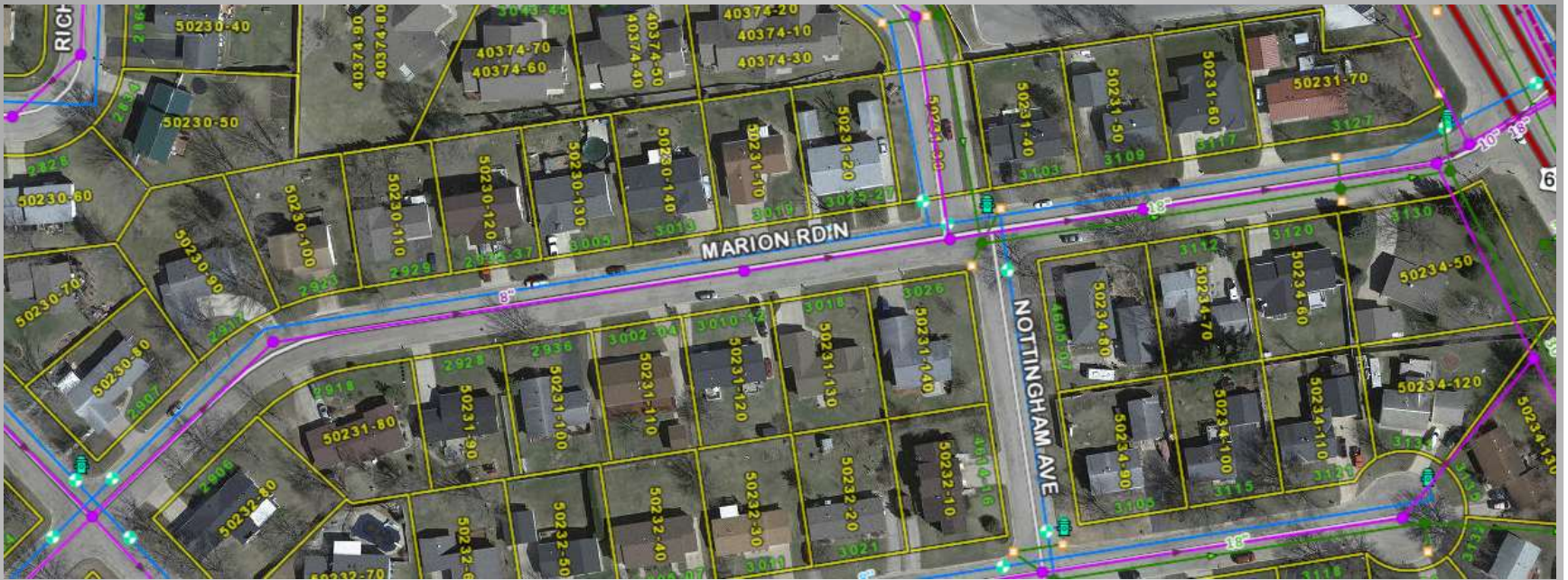
6th St. from Cass to Division



**7th St. from Swift Creek culvert to
2680 7th St.**



Birch St. from MC Rd to East Ave



Marion Rd N from MC Rd to Robinhood



Vine St. from West Ave to 14th St.



**Milwaukee St. from Monitor to
new pavement North**



Weston St. from 13th Pl to 15th St.



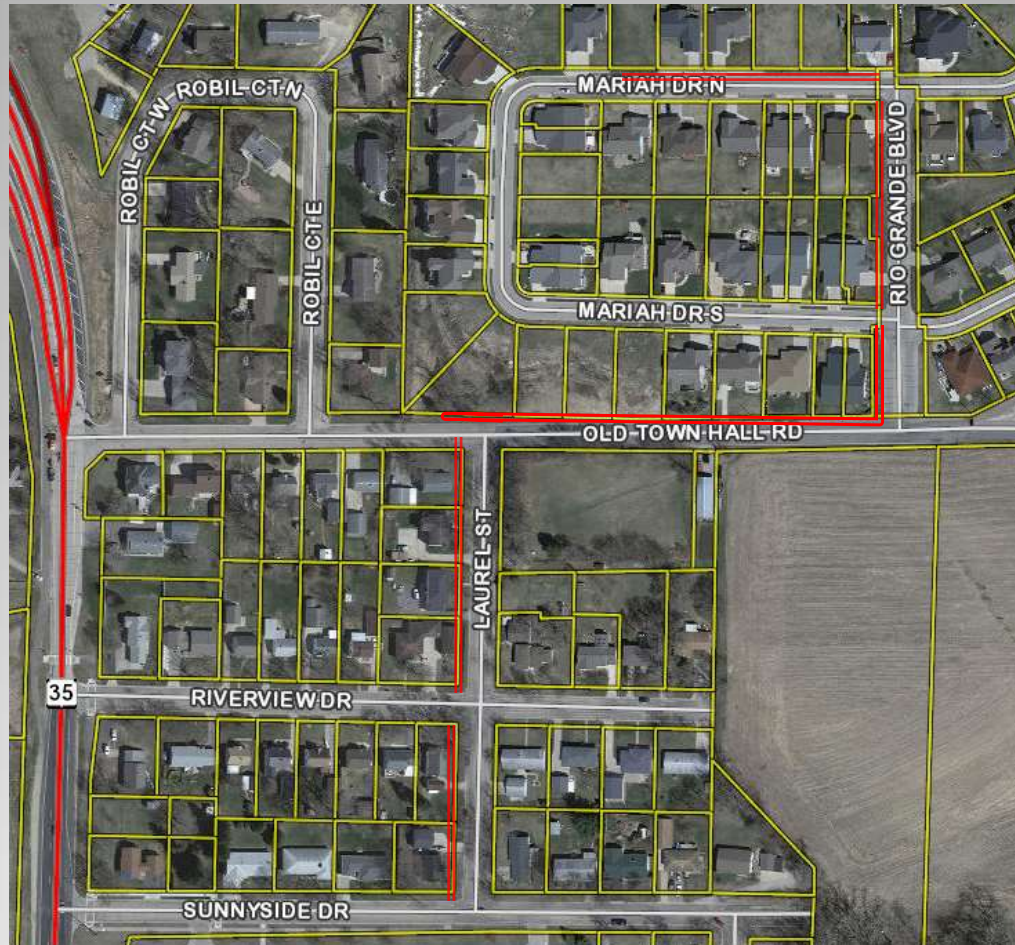
Gould St. from Rose to Copeland



Milson Ct from Quarry Rd to Bluff Pass (Street dept paving)



**Sidewalk on N side of County Rd B
BTWN Eastbrook & Sablewood**



Southern Bluff Safe Route Sidewalks



22nd St. from Jackson to Market



Existing
Kwik
Trip



**Kwik Trip Way from Oak St. to
Kramer St.-storm; Kramer St. from
Kwik Trip Way**



**2nd St. from State St to La Crosse
River-ROW to ROW with
Streetscape**



**2nd St. from State St. to La Crosse
River-ROW to ROW with
Streetscape—2nd section pic**



**2nd St. from State St. to La Crosse
River-ROW to ROW with
streetscape—3rd section pic**



Bennett St. to Trane Park-2013 carryover



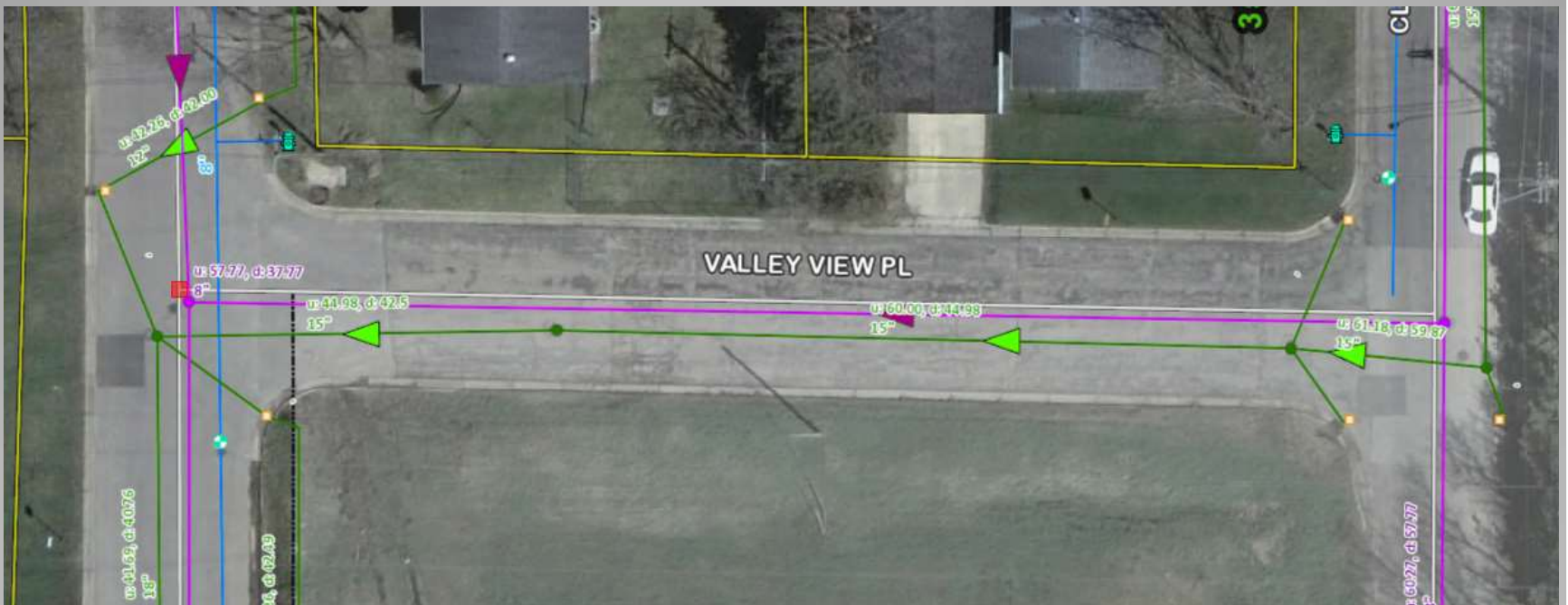
17th Street from Maine to State



Storm Sewer Main: Bennett St. to Trane Park: 2013 carryover



Water Main: Shelby Rd from East Ave to West Cul-De-Sac: 2014 Carryover



Pave: Valley View Pl from Cliffside Dr. to Elm Dr.: 2014 carryover