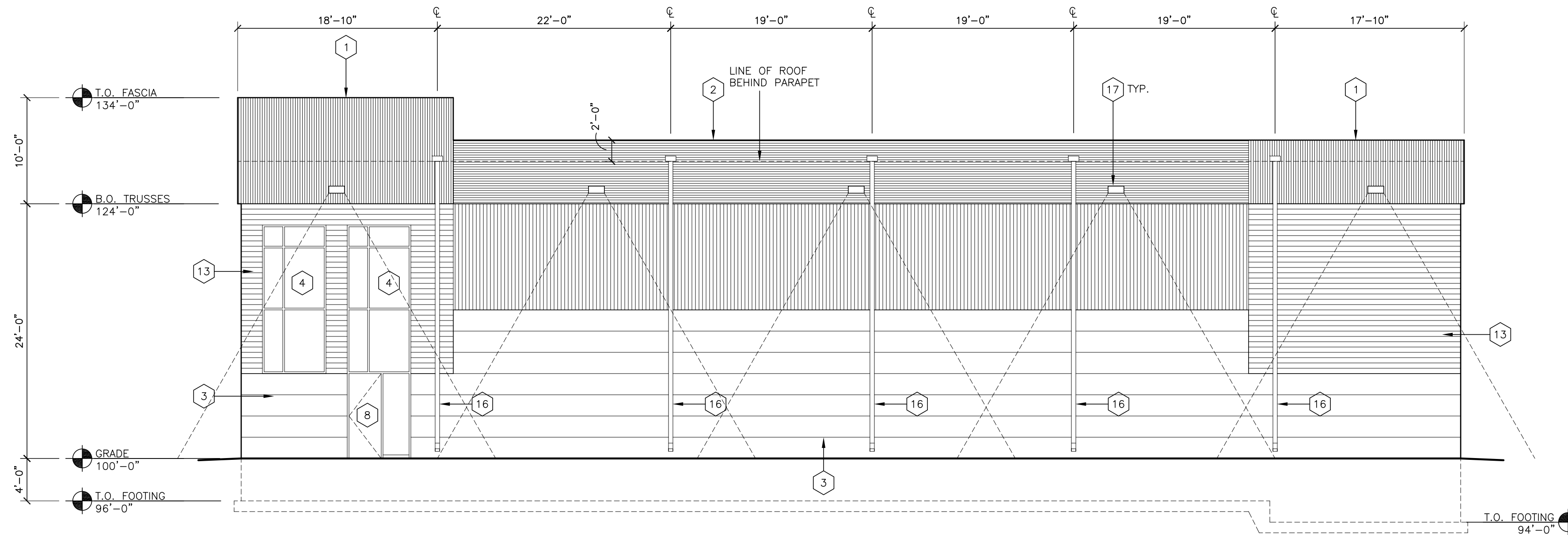
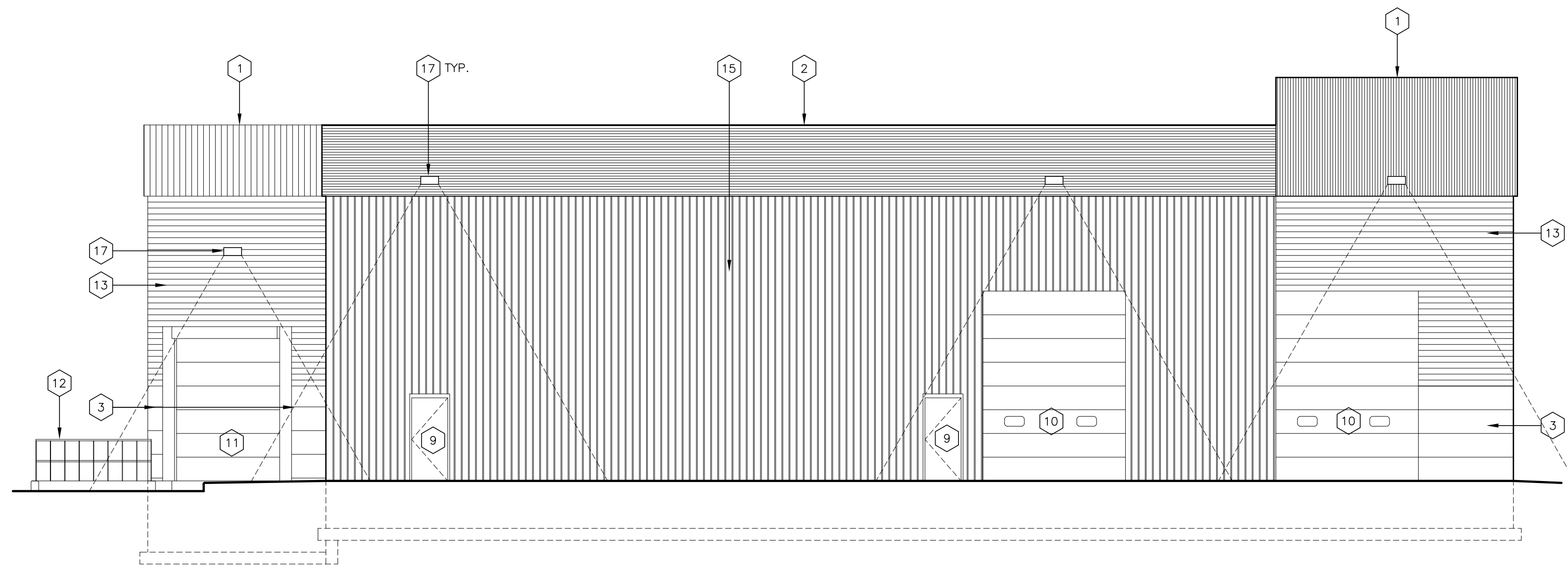


1 ROSE STREET EXTERIOR ELEVATION  
A2 1/8" = 1'-0"

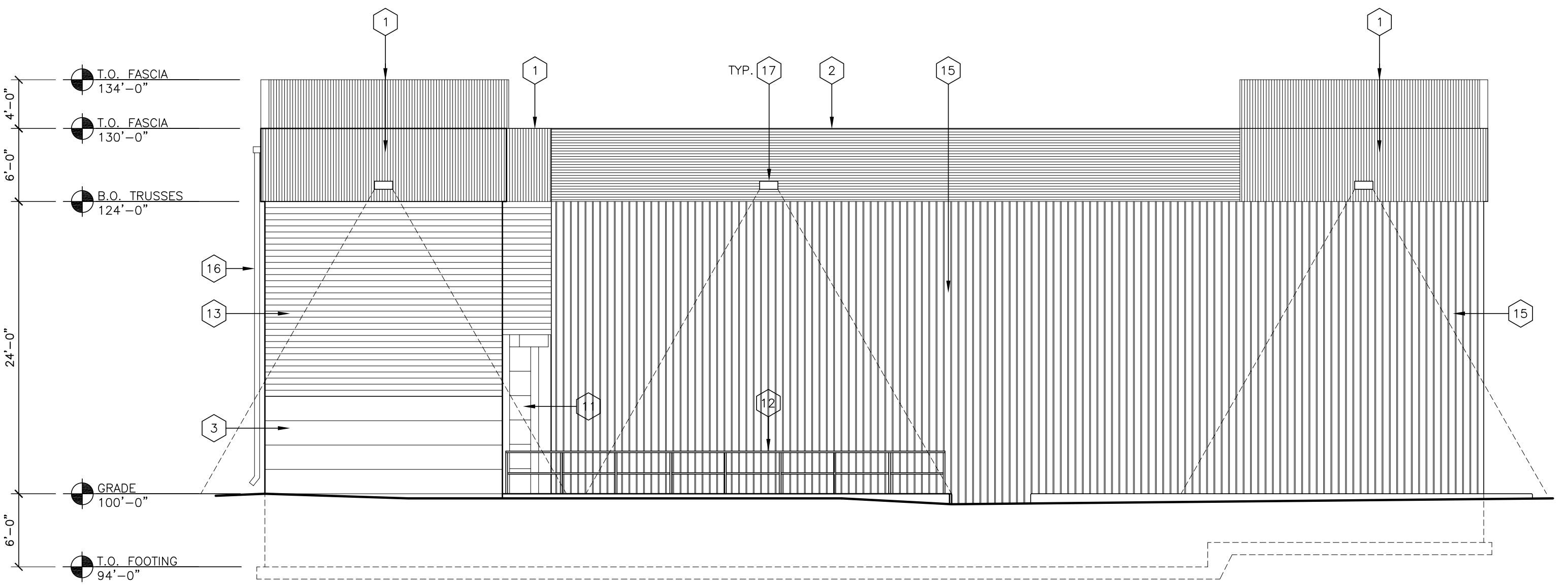


1 HAGAR STREET EXTERIOR ELEVATION  
A2 1/8" = 1'-0"



3 SIDE EXTERIOR ELEVATION  
A2 1/8" = 1'-0"

ELEVATION KEY NOTES	
1	ARCHITECTURAL METAL - M-COR, MCELROY METAL, VERTICAL, COLOR: SKY BLUE, UNACLAD SRI 28.
2	ARCHITECTURAL METAL - M-COR, MCELROY METAL, HORIZONTAL, COLOR: CITY SCAPE, UNACLAD SRI 39.
3	ARCHITECTURAL TILT-UP PREFABRICATED CONCRETE PANEL (PATTERN AS SHOWN) 2'-0" HOR. SCORE.
4	6'-0" x 14'-0" CLEAR ANODIZED STOREFRONT WINDOWS.
5	12'-0" x 8'-0" CLEAR ANODIZED STOREFRONT WINDOWS WITH MULLIONS AS SHOWN.
6	12'-0" x 8'-0" CLEAR ANODIZED STOREFRONT WINDOWS WITH MULLIONS AS SHOWN.
7	12'-0" x 8'-0" CLEAR ANODIZED STOREFRONT WINDOWS WITH MULLIONS AS SHOWN.
8	3'-0" x 8'-0" CLEAR ANODIZED DOOR AND HARDWARE WITH 3'-0" x 8'-0" SIDE LITE.
9	3'-0" x 7'-0" EXTERIOR INSULATED METAL MAN DOOR.
10	12'-0" x 16'-0" INSULATED METAL OVERHEAD DOOR.
11	9'-0" x 12'-0" INSULATED METAL OVERHEAD DOOR.
12	42" HIGH STEEL GUARD RAIL AND CONCRETE RETAINING WALL.
13	6" ALUMINUM LONG BOARD HORIZONTAL.
14	4" ALUMINUM LONGBOARD VERTICAL.
15	MEGA RIB - MCELROY METAL.
16	SCUPPER AND COMMERCIAL DOWNSPOUTS.
17	EXTERIOR DOWN LIGHTING.



4 REAR EXTERIOR ELEVATION  
A2 1/8" = 1'-0"

I hereby certify that this plan, specification, or report was prepared by me or under my direct supervision and that I am a duly Registered Architect under the laws of the State of Wisconsin.  
Number: A-4569 Date: \_\_\_\_\_  
This drawing is not to be used for any other project without the specific approval of the architect. Any reproduction or use for any other purpose without the prior written consent of the architect is strictly prohibited.  
Information contained in these drawings was prepared for the specific site listed below. Use of these drawings for any other location or project is strictly prohibited without the prior written consent of the architect. © 2017

**MBA**  
MBA Architects, Inc.  
3823 Creekside Lane  
Holmen WI, 54636  
PH: 608-785-2760  
FAX: 608-785-2750



722 ROSE STREET  
LA CROSSE, WI

CLIENT: JAMES WILLE

ISSUE DATE:  
CLIENT REVIEW 08/23/17

REVISIONS		
rev.	date	comments

Drawn by: TRB checked by: CHK

THIS SHEET CONTAINS:  
EXTERIOR ELEVATIONS

**A2**  
ARCHITECT'S COMMISSION NUMBER  
17-1146.001