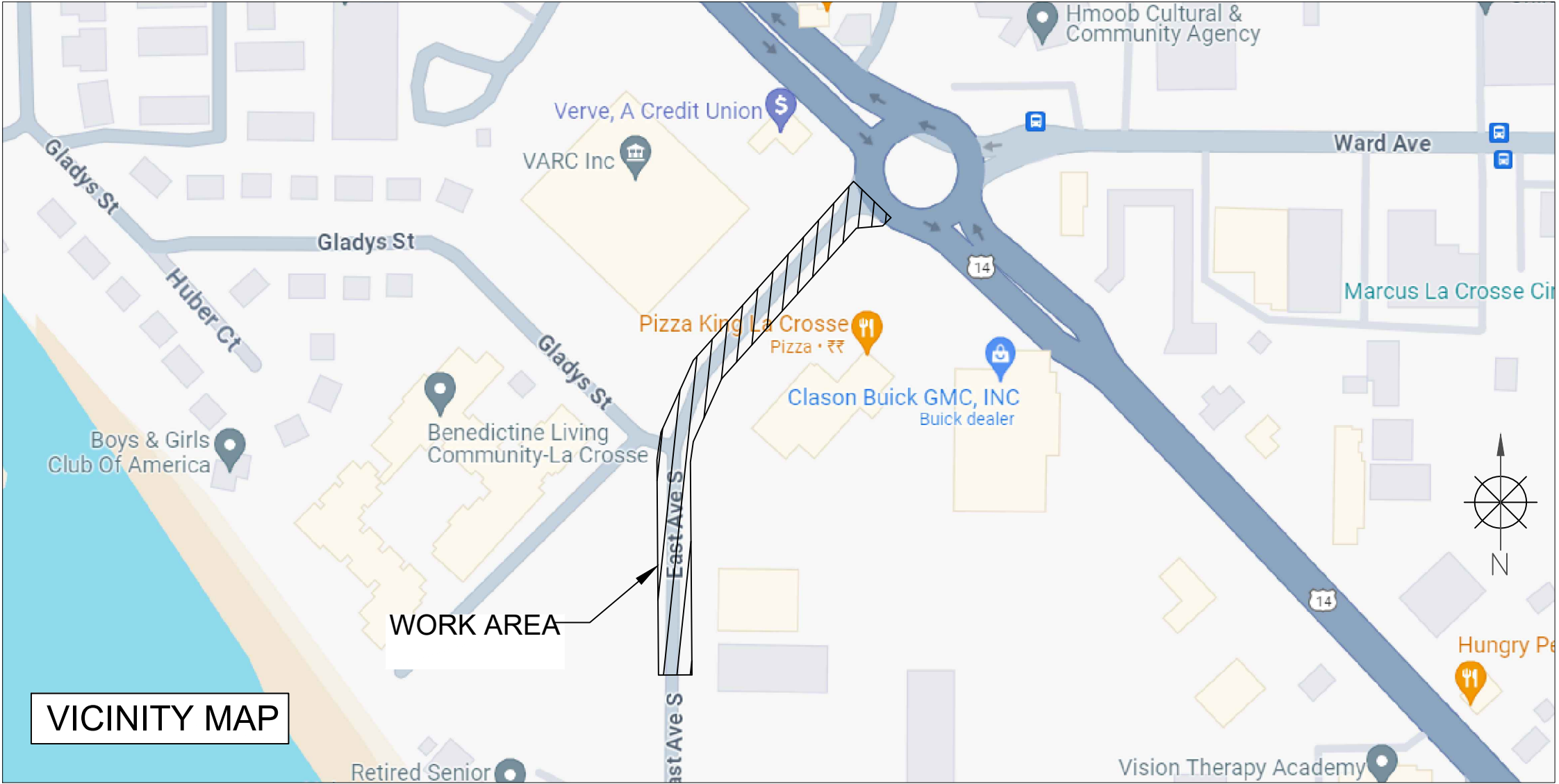


# BRIGHTSPEED LA CROSSE

2604 15TH ST. S  
EAST AVE. S & GLADYS ST.  
CITY OF LA CROSSE, WI



VICINITY MAP

## TRAFFIC CONTROL PLAN

SCOPE OF WORK	SHEET INDEX	
- BORING - HH & GROUND ROD PLACEMENT	SHEET	DESCRIPTION
	KEYMAP	VICINITY MAP & SCOPE OF WORK
	TC-1 TO TC-2	TRAFFIC CONTROL PLAN

## PERMITTING AGENCY CITY OF LA CROSSE

**PROPOSED PATH FOOTAGE**  
UG PATH = 2,825'



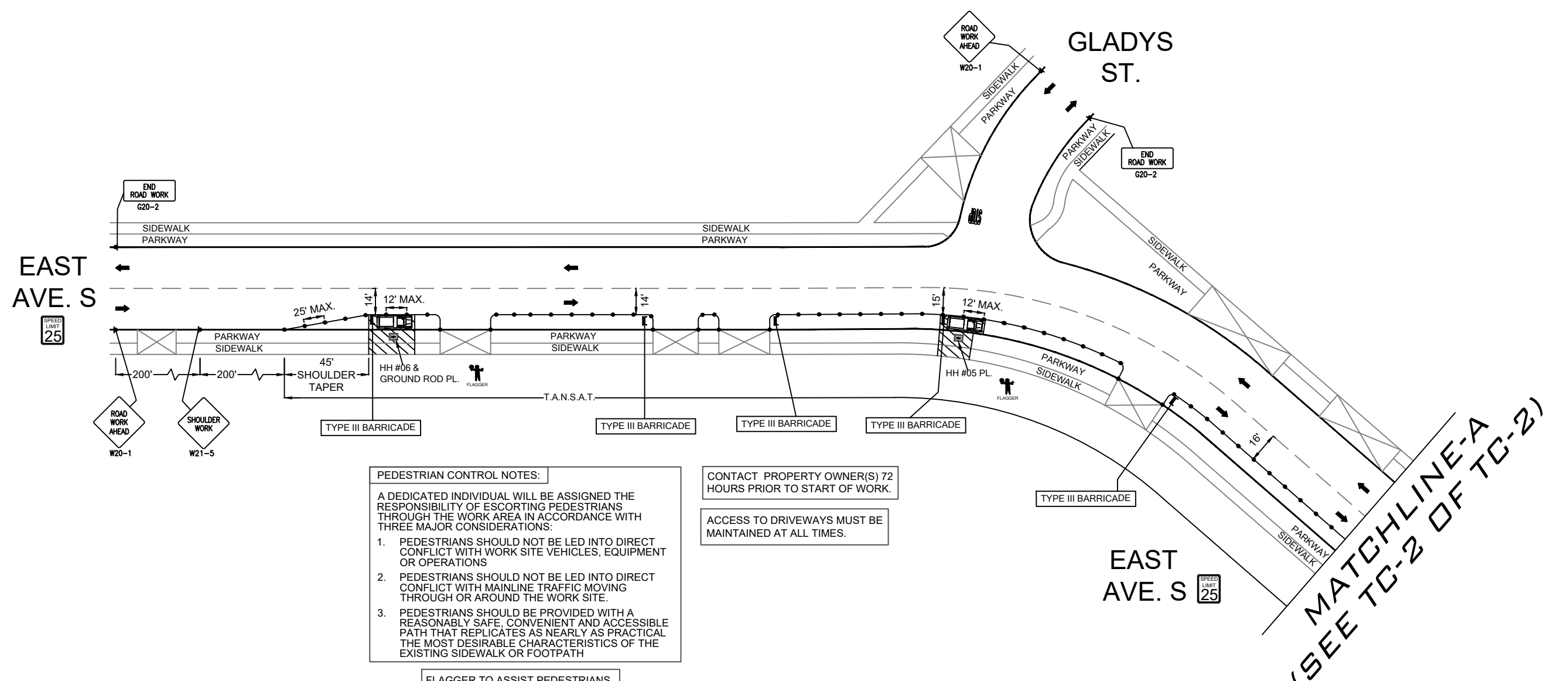
CHC A CONGRUEX COMPANY 9095 Rio San Diego Dr. Ste 165 San Diego, CA 92108-1694 (949) 250-0004 / FAX (949) 250-0006			
REVISIONS			
REV.	DESCRIPTION	BY	DATE
0	INITIAL DESIGN	H.S.	5/25/24

## BRIGHTSPEED

LCRSWIXB

**KEYMAP**  
N.T.S.

2604 15TH ST. S  
EAST AVE. S AND GLADYS ST.  
-BORING, HH & GROUND ROD PL.  
WORK AREA 1 OF 1



PEDESTRIAN CONTROL NOTES:

A DEDICATED INDIVIDUAL WILL BE ASSIGNED THE RESPONSIBILITY OF ESCORTING PEDESTRIANS THROUGH THE WORK AREA IN ACCORDANCE WITH THREE MAJOR CONSIDERATIONS:

1. PEDESTRIANS SHOULD NOT BE LED INTO DIRECT CONFLICT WITH WORK SITE VEHICLES, EQUIPMENT OR OPERATIONS
2. PEDESTRIANS SHOULD NOT BE LED INTO DIRECT CONFLICT WITH MAINLINE TRAFFIC MOVING THROUGH OR AROUND THE WORK SITE.
3. PEDESTRIANS SHOULD BE PROVIDED WITH A REASONABLY SAFE, CONVENIENT AND ACCESSIBLE PATH THAT REPLICATES AS NEARLY AS PRACTICAL THE MOST DESIRABLE CHARACTERISTICS OF THE EXISTING SIDEWALK OR FOOTPATH

FLAGGER TO ASSIST PEDESTRIANS THROUGH WORK AREA (SEE PED NOTES)

CONTACT PROPERTY OWNER(S) 72 HOURS PRIOR TO START OF WORK.

ACCESS TO DRIVEWAYS MUST BE MAINTAINED AT ALL TIMES.

LEGEND	
	PORTABLE FLASHING BEACON (P.F.B.)
	TYPE III BARRICADE W/SIGN
	TYPE II BARRICADE W/SIGN
	CHANNELIZING DEVICE
	TRAFFIC CONE WITH CLIP ON SIGN
	TYPE I W/ SIGN
	EXISTING SIGN
	SIGNALIZED INTERSECTION
	FLASHING ARROW BOARD
	HIGH LEVEL WARNING DEVICE (FLAGTREE)
	FLAGGER
TANSAT	TOW AWAY NO STOPPING ANY TIME
	EXISTING DRIVEWAY
	WORK ZONE (ACTIVITY AREA) LIMITS
	DIRECTION OF TRAFFIC (NOT PAVEMENT MARKING)

CALL 811 BEFORE YOU DIG.  
WISCONSIN TOLL FREE  
800-242-8511

**BRIGHTSPEED**

PLANS PREPARED BY:

**CHC**  
A CONGRUEX COMPANY  
9095 Rio San Diego Dr. Ste 165  
San Diego, CA 92108-1694  
(949 )250-0004 /FAX (949)250-0006

REVISIONS			
REV.	DESCRIPTION	BY	DATE
0	INITIAL DESIGN	H.S.	5/25/24

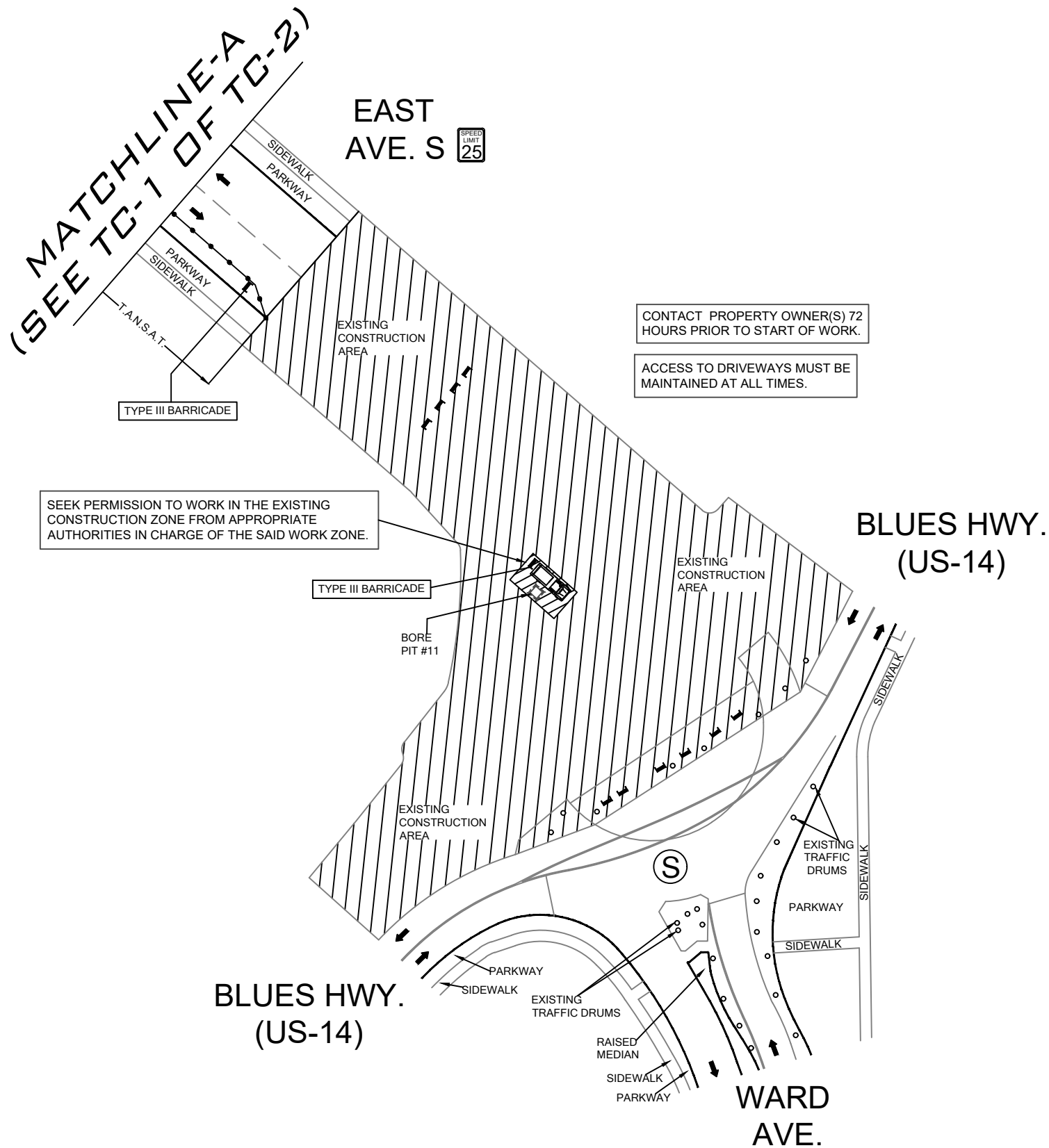
BRIGHTSPEED  
CONFIDENTIAL AND PROPRIETARY

LCRSWIXB

TC-1 OF TC-2

SCALE: 1:60

2604 15TH ST. S  
EAST AVE. S AND GLADYS ST.  
-BORING, HH & GROUND ROD PL.  
WORK AREA 1 OF 1



LEGEND	
	PORTABLE FLASHING BEACON (P.F.B.)
	TYPE III BARRICADE W/SIGN
	TYPE II BARRICADE W/SIGN
	CHANNELIZING DEVICE
	TRAFFIC CONE WITH CLIP ON SIGN
	TYPE I W/ SIGN
	EXISTING SIGN
	SIGNALIZED INTERSECTION
	FLASHING ARROW BOARD
	HIGH LEVEL WARNING DEVICE (FLAGTREE)
	FLAGGER
TANSAT	TOW AWAY NO STOPPING ANY TIME
	EXISTING DRIVEWAY
	WORK ZONE (ACTIVITY AREA) LIMITS
	DIRECTION OF TRAFFIC (NOT PAVEMENT MARKING)

CALL 811 BEFORE YOU DIG.  
WISCONSIN TOLL FREE  
800-242-8511

BRIGHTSPEED

PLANS PREPARED BY:  
**CHC**  
A CONGRUEX COMPANY  
9095 Rio San Diego Dr. Ste 165  
San Diego, CA 92108-1694  
(949) 250-0004 / FAX (949) 250-0006

REVISIONS			
REV.	DESCRIPTION	BY	DATE
0	INITIAL DESIGN	H.S.	5/25/24

BRIGHTSPEED  
CONFIDENTIAL AND PROPRIETARY  
LCRSWIXB

TC-2 OF TC-2

SCALE: 1:60