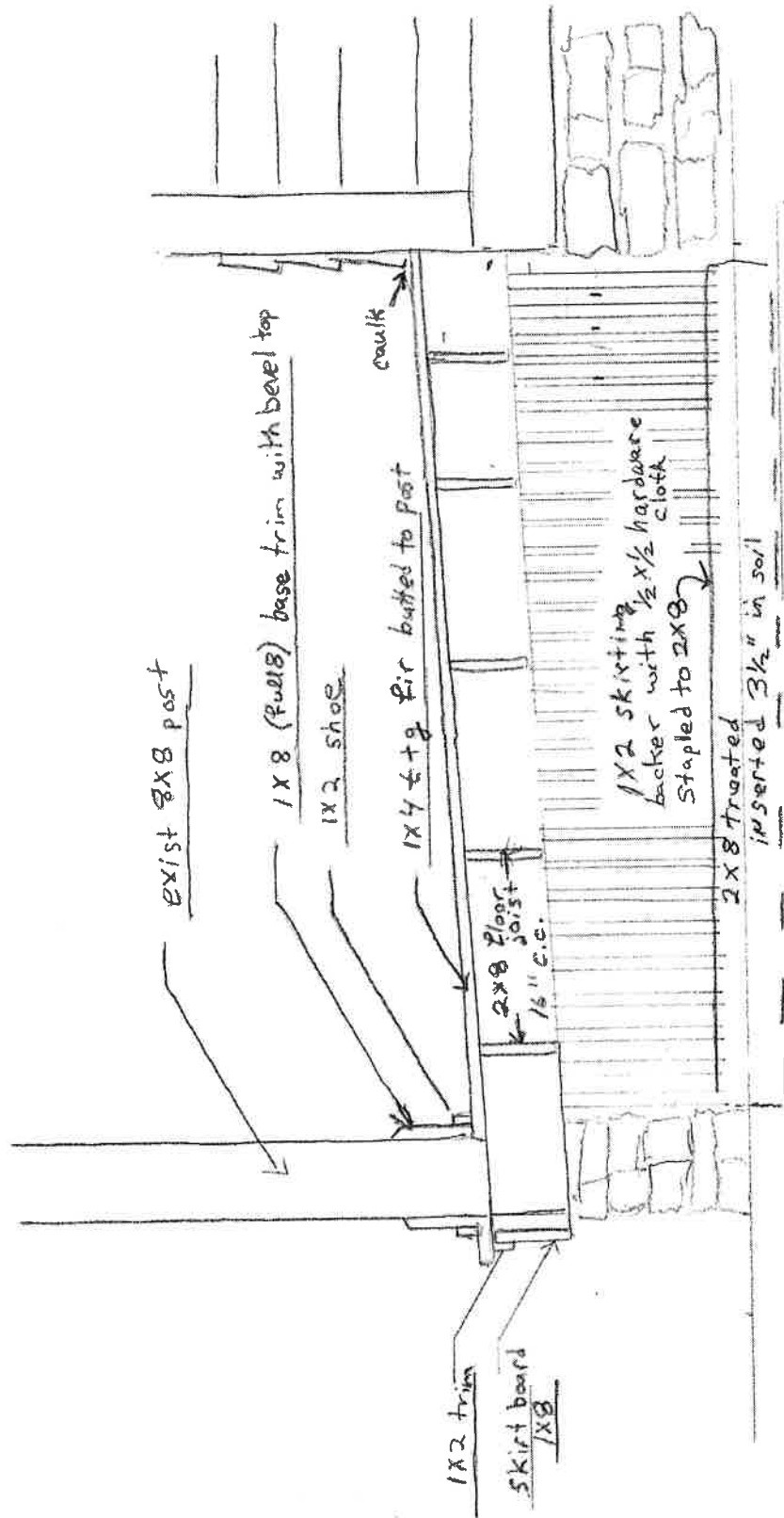


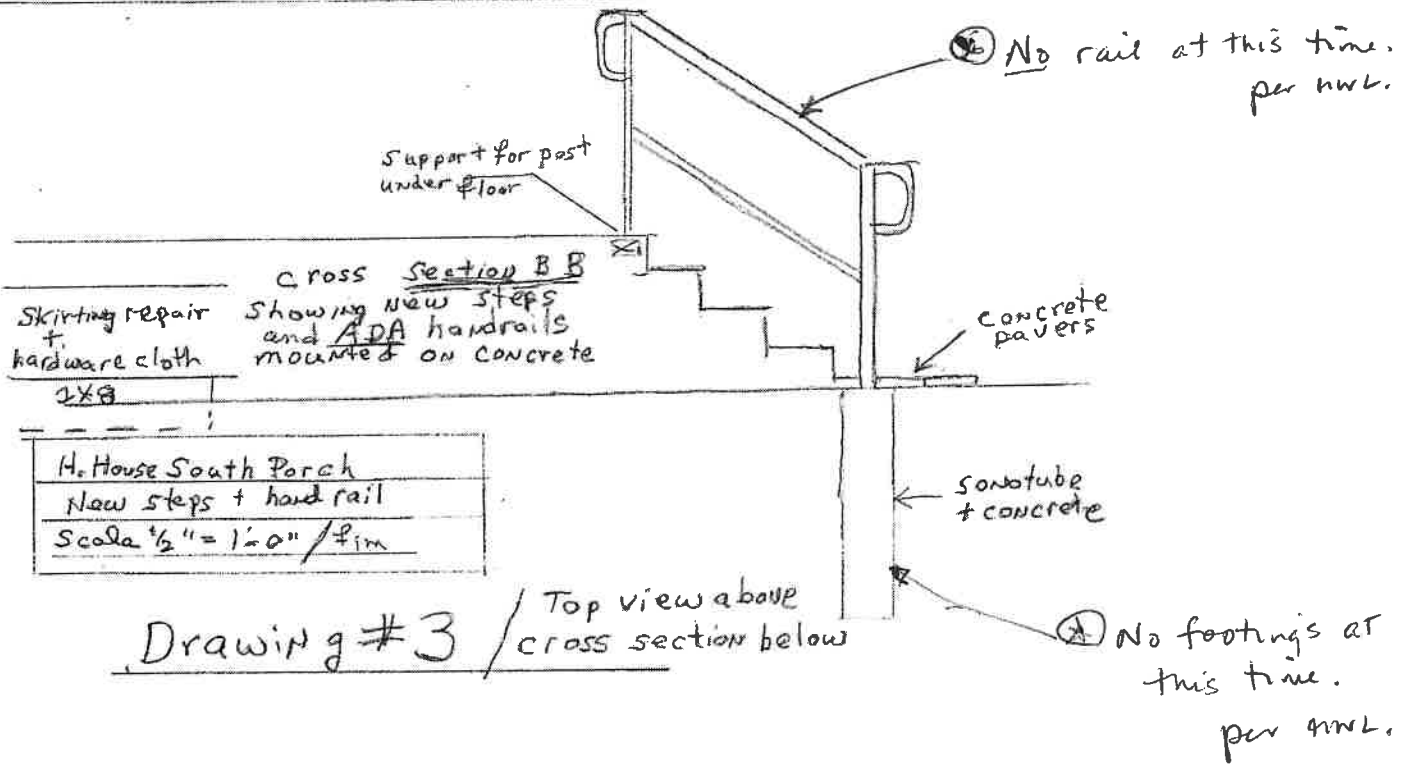
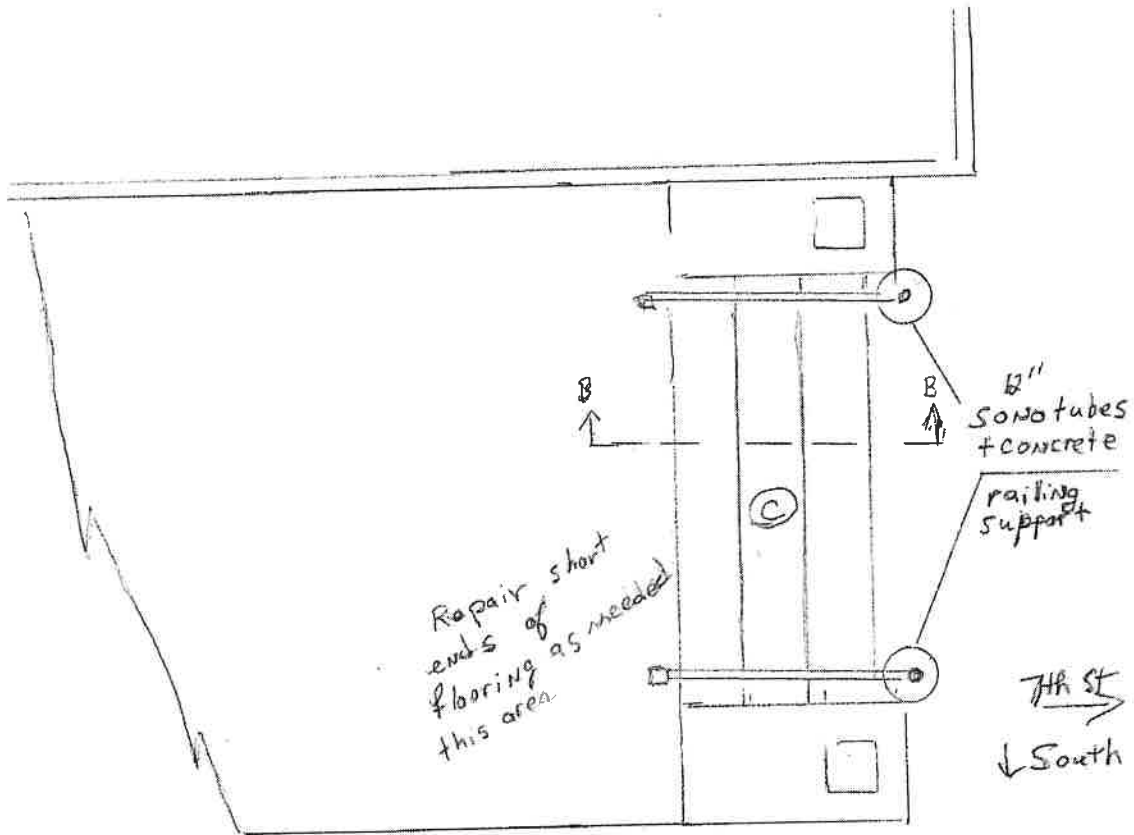
Hixon House  
 West Porch  
 Scale 1/4" = 1'-0"  
 Feb 1, 2023 / EJM

Drawing #1



Hixson House, West Porch  
 Section AA; scale 1" = 1'-0"  
 Feb 2, 2023; FJM

Drawing #2



H. House South Porch  
 New steps + hand rail  
 Scale 1/2" = 1'-0" / 1/4" = 1'-0"

Drawing #3 / Top view above / cross section below

### Specifications for Repairs to porches and steps at Hixon House (Feb 2, 2023 by fjm)

- 1) Remove wood flooring from West porch, approx. 7' x 29' as per attached drawing #1.
- 2) Remove 1 X 8 trim at bottom of the 3 - 8" X 8" posts as well as the perimeter skirt board.
- 3) Care to be taken to cover nearby ground and other lead abatement precautions for above work.
- 4) Dispose properly of all materials at Landfill. Contractor to include cost in estimate.
- 5) Care also must be taken not to damage house siding.
- 6) Install new vertical grain fir flooring supplied by the owner. It will be pre-stained but care must be taken to seal any end or horizontal cuts. Flooring to be butted to posts. (no need to elevated posts)
- 7) Install new 1 X 8 skirt board on 44' perimeter from cedar material, and on the base of each post (note; 22% angle to match existing) supplied by contractor including back-primer and primed face. (see drawing 1 and 2)
- 8) Install 1 X 2 with radius edge between skirt board and flooring on entire 44' perimeter plus at the base of each post .This material to be out of cedar, supplied by contractor and primed. (See drawing #2)
- 9) Repair or rebuild 1 x2 skirting including backing it with ½" by ½" hardware cloth that is then stapled to a treated 2 X8 inserted in the ground in an effort to control rabbit population. Materials to be supplied by contractor and prime painted as above. (See drawing # 2)
- 10) Replace steps B (See drawing # 1) with 3 steps instead of 2. Handrails are not needed. Contractor to include material for treated steps, primed also.
- 11) Re-caulk seems along siding/flooring connection plus post to flooring connection. Caulk to be supplied by contractor
- 12) End West porch
- 13) Begin South porch as per drawing # 3
- 14) Contactor to purchase all material #16 and below.
- 15) Remove 2 steps leading to south steps, disposing of them properly.
- 16) Rebuild using 3 steps with equal rise/run ratio (Approx. 6" rise/11" run)
- 17) ~~Install 2 - 12 diameter sonotubes filled with concrete to support base of vertical post for handrail~~
- 18) ~~Do minor repairs on the porch floor including inserting solid blocking for the top vertical supports for handrails.~~
- 19) ~~Install 2 sets (one on each side of stair opening) of black metal, ADA-approved handrail. Please check with LCHS (Frank as contact 563.568.8610) for final approval before ordering. (Westbury makes a very nice product and can be ordered locally):~~
- 20)

Bids are to be submitted no later than Feb 28, 2023 to La Crosse County Historical Society, 145 West Ave. S. or by email to Margaret Lichter at [margaret@lchshistory.org](mailto:margaret@lchshistory.org).

If awarded a contract, proof of insurance must be supplied and made out to LCHS.

Contracted work must be done no later than April 21st, 2023.

All material being purchased by the contractor are tax exempt and proper Exempt Status form will be supplied to supplies as needed.

Contract awarded to \_\_\_\_\_

Signature and Date \_\_\_\_\_



South porch



**HIXON HOUSE**

**1900 ADDITIONS of TURKISH CORNER & DINING ROOM BAY**

**BODY**

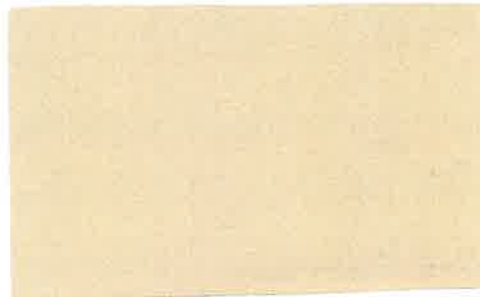
grayish yellow - GLOSS  
MUNSELL 2.5 Y  
7.75/4



Pratt & Lambert #2102

**TRIM**

pale yellow - GLOSS  
MUNSELL 3.75 Y  
8.25/2

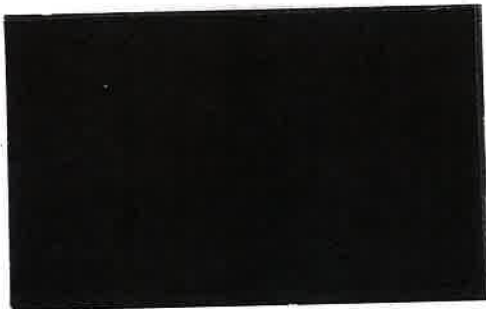


Pratt & Lambert #2129

**WINDOW SASH - dining room**

black putty & wood black primer

black - HIGH GLOSS  
MUNSELL N 2



ICI #1674

**PORCH DECK**

brownish gray - GLOSS  
MUNSELL 1.75 Y  
4.5/1.5

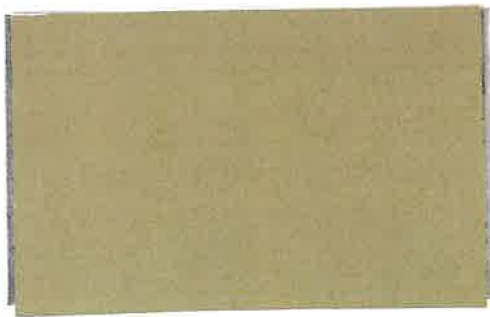


Benjamin Moore HC-85



**BARN - all one color**

light olive brown - GLOSS  
MUNSELL 1.75 Y  
6.5/2



ICI #521

West Porch





West Porch

