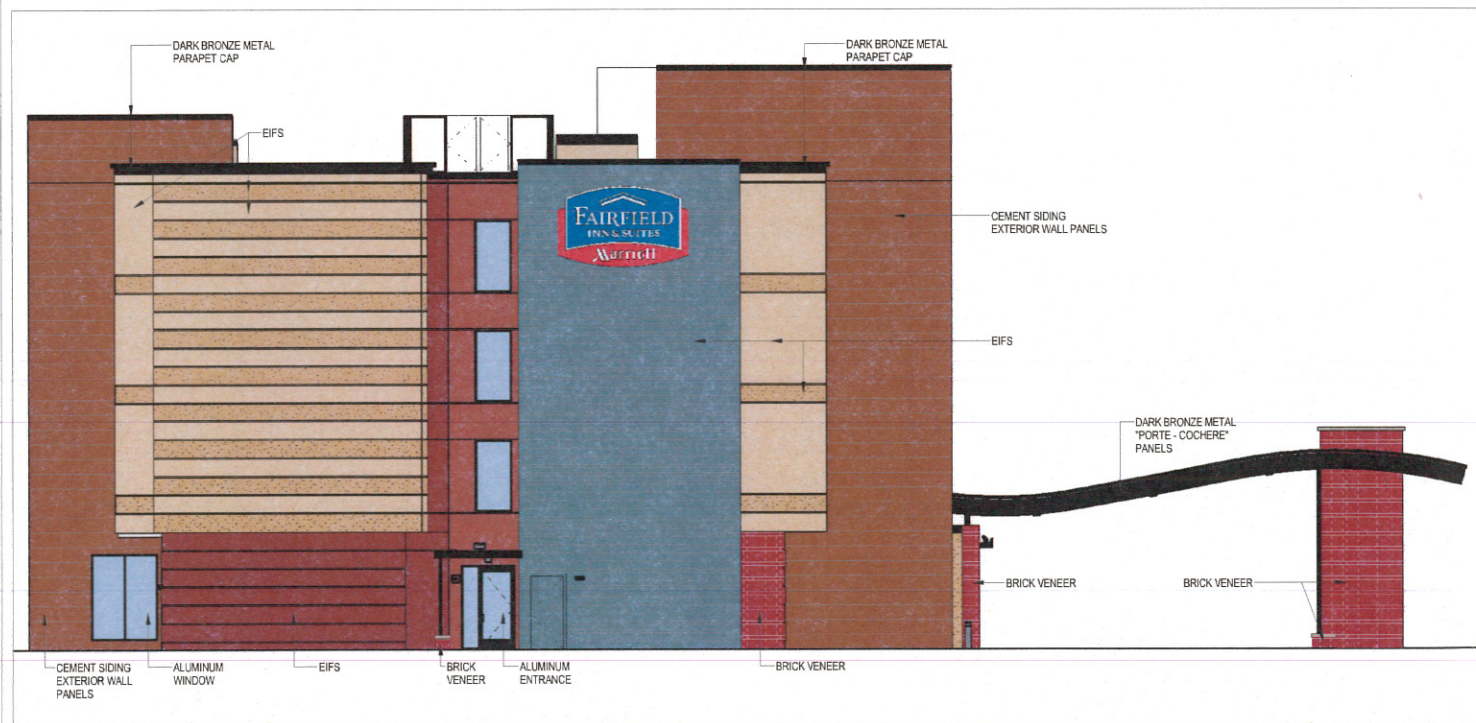


1 EAST ELEVATION - GEN 4 - ALTERNATE
1/8" = 1'-0"



2 SOUTH ELEVATION - GEN 4 - ALTERNATE
1/8" = 1'-0"



3 NORTH ELEVATION - GEN 4 - ALTERNATE
1/8" = 1'-0"



1 WEST ELEVATION - GEN 4 - ALTERNATE
1/8" = 1'-0"

PROJECT TITLE:
Fairfield Inn and Suites
Fairfield Holdings, Inc.
434 Holdings, Inc.
PROJECT LOCATION:
La Crosse, WI

PROJECT NO:
14109

DRAWING DATE:
12.11.14

DRAWN BY:
kmb/ams

SET TYPE:
Design
Development

REVISIONS
NO. DATE

SHEET TITLE
Gen 4 - Red Brick w/
Dark Metal Accent

SHEET NO.
A201.2

Scale: 1/8" = 1'-0"

These documents shall not be used for any purpose or project for which it is not intended. Mead & Hunt shall be indemnified by the client and hold harmless from all claims, damages, liabilities, losses, and expenses, including attorney's fees and costs, arising out of such misuse or reuse of the documents. In addition, unauthorized reproduction of these documents, in part or as a whole, is prohibited.

92 ROOM HOTEL W/ 98 PARKING STALLS



TAX PARCEL 17-20028-70

EXISTING GARAGE/STORAGE AREA TO REMAIN UNTIL AFTER THE COMPLETION OF THE HOTEL

EDGE OF BRIDGE

20' Alley

Cass Street

92'

10 STALLS

7 STALLS

6 STALLS

CONCRETE SIDEWALK

CONCRETE SIDEWALK

CONCRETE SIDEWALK

DUMPSTER ENCLOSURE

INSTALL NEW MANHOLE, TIE INTO EX. STORM SEWER TRUNK LINE (18")

King Street

UNDERGROUND STORM STORAGE VAULT

CONCRETE SIDEWALK

PROPOSED GREEN SPACE (TYP.)

8 STALLS

7 STALLS

8 STALLS

17 STALLS

HABITAT FOR HUMANITY

HILTON MEDICAL

EXISTING ROADWAY SIGN TO REMAIN

3rd Street

PROJECT #9744
FFIS WI La Crosse

434 HOLDINGS, INC.

REVISION

NOT FOR CONSTRUCTION

MSH NO: 4319100-14063.01
DATE: 12/19/14
DESIGNED BY: RLF
DRAWN BY: RLF
CHECKED BY: JPW
DO NOT SCALE DRAWINGS

SHEET CONTENTS
SITE LAYOUT

SHEET NO. 1 of 1

C-100

X:\4319100\141063.01\TECH\CAD\DRAWINGS\LA CROSSE DEVELOPMENT - VAULT.DWG
12/19/2014 4:07:50 PM