

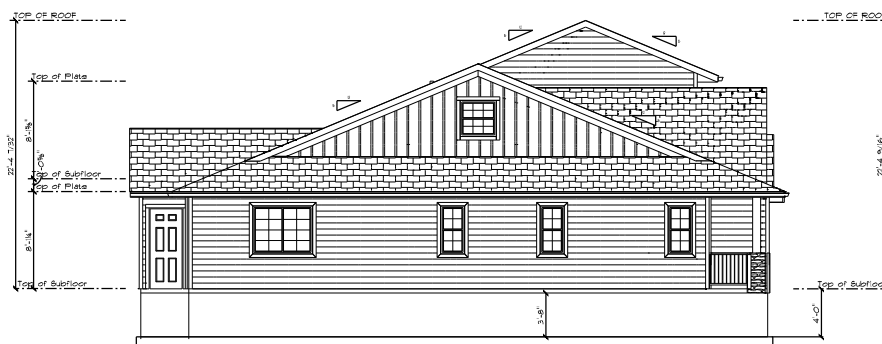


FRONT

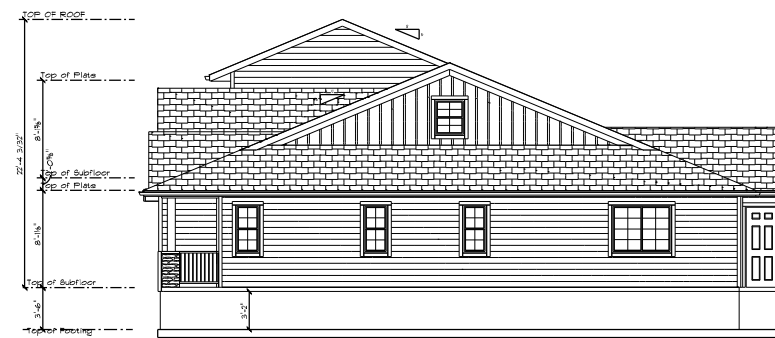


BACK

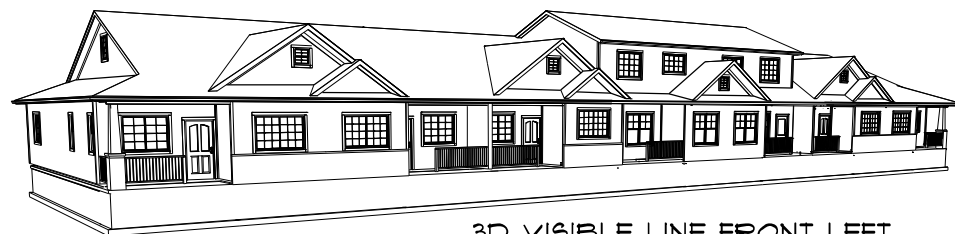
TOTAL SF OF BUILDING
 6448 SF MAIN FLOORS
 1056 SF UPPER STORY
 1720 SF GARAGES
 440 SF PORCHES



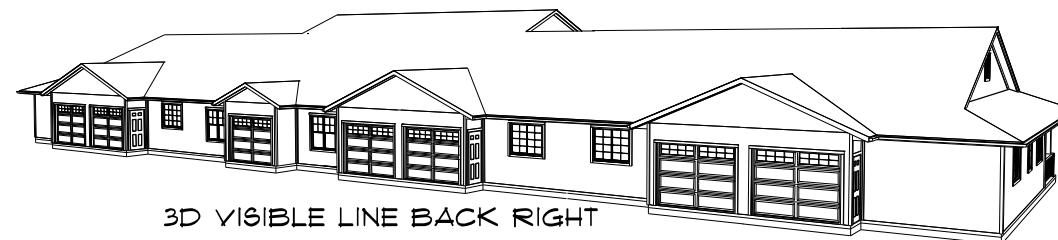
LEFT



RIGHT

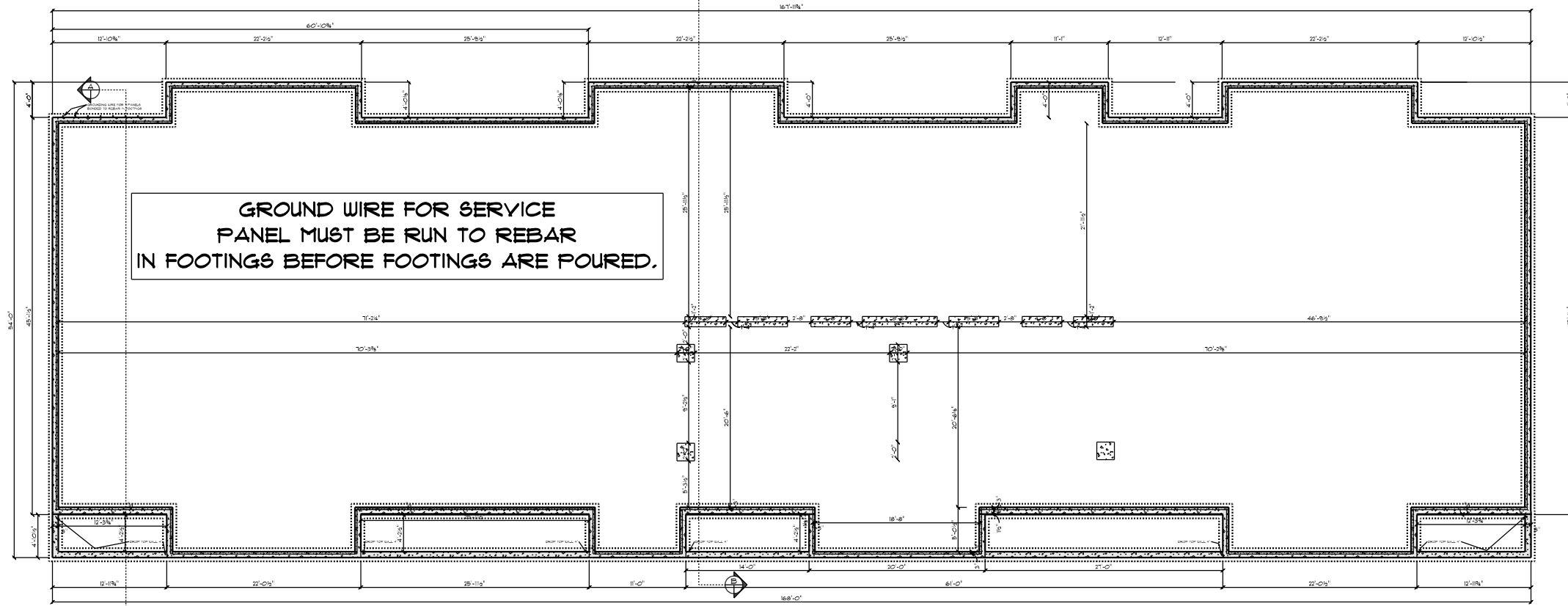


3D VISIBLE LINE FRONT LEFT



3D VISIBLE LINE BACK RIGHT

NAME	AREA
UNIT A- MAIN LEFT END	936 SF
UNIT A- GARAGE	236 SF
UNIT A- PORCH	60 SF
UNIT B- MAIN	936 SF
UNIT B- GARAGE	236 SF
UNIT B- PORCH	60 SF
UNIT C- MAIN	936 SF
UNIT C- GARAGE	236 SF
UNIT C- PORCH	60 SF
UNIT D- MAIN 2 story	884 SF
UNIT D- UPPER	528 SF
UNIT D- GARAGE	270 SF
UNIT D- PORCH	70 SF
UNIT E- MAIN 2 story	884 SF
UNIT E- UPPER	528 SF
UNIT E- GARAGE	270 SF
UNIT E- PORCH	70 SF
UNIT F- MAIN	936 SF
UNIT F- GARAGE	236 SF
UNIT F- PORCH	60 SF
UNIT G- MAIN	936 SF
UNIT G- GARAGE	236 SF
UNIT G- PORCH	60 SF



SPECIFICATIONS:
 FLOOR JOISTS: 14" I-JOIST 2ND FLOOR ONLY
 SHEATHING: 3/4" T&G OSB NAILED & GLUED
 EXTERIOR WALLS: MAIN: 2X6X 9'-1 1/8" @ 24" O.C.
 W BIBS FIBERGLASS R-21
 W 15/32" OSB TYVEK HOUSE WRAP
 GARAGE: 2X4 @ 16" O.C. W 15/32" OSB TYVEK HOUSE WRAP
 COMMON PARTY WALLS: DOUBLE 2X4 24" OC
 W DBL SOUND BATTS AND SOUND BOARD BETWEEN
 ROOF FRAMING: ENGINEERED TRUSSES @ 24" O.C.
 W/ 1" ENERGY HEELS SHEATHING: 15/32" OSB
 ROOF FELT: 15" FELT INSULATION: R-50 BLOWN FIBERGLASS
 WINDOWS: ALLIANCE VINYL L6E DUALPANE W/ ARGON
 EXTERIOR DOORS: STEEL W/ DEADBOLTS
 FIREPLACE: 50" ELECTRIC LINEAR FIREPLACES
 INTERIOR RAILINGS: COLONIAL, POST-TO-POST 2 STORY
 FURNACE: MULTI ZONE MINI SPLIT HEAT PUMP
 W ELECTRIC BATH HEATERS SUPPLIMENT
 AIR CONDITIONER: MINI SPLIT HEAT PUMP
 WATER HEATER: TANKLESS ELECTRIC
 WATER SOFTENER: PREF ONLY
 GAS PIPING TO: NONE

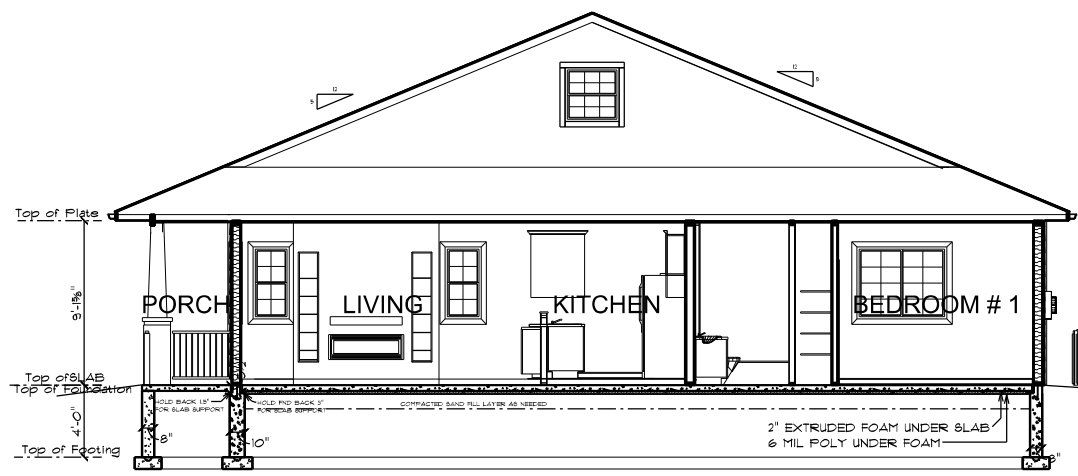
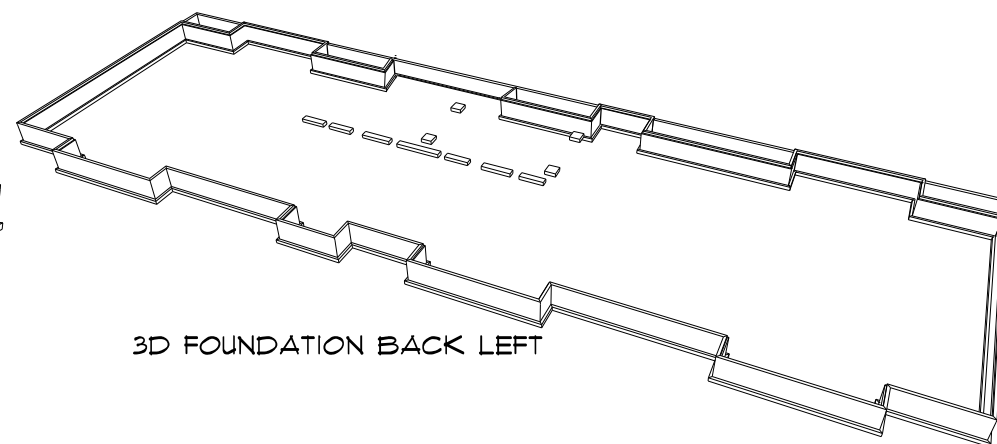
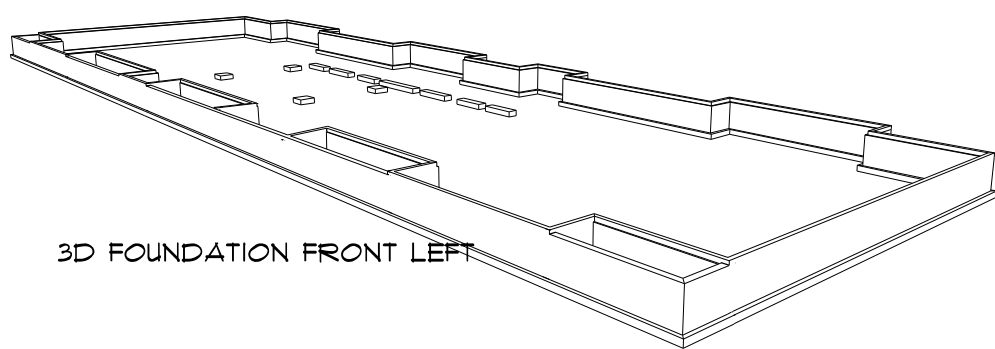
SPECIALS:
 IRRIGATION SYSTEM : N/A
 SOUND SYSTEM : N/A
 SECURITY SYSTEM : N/A
 CENTRAL VAC SYSTEM : N/A
 CORNER BEAD : STD.

POCKET DOOR R.O.'S
 2'-0" X 6'-8" = 4'-2" X 1'-0 1/4"
 2'-4" X 6'-8" = 4'-10" X 1'-0 1/4"
 2'-6" X 6'-8" = 5'-2" X 1'-0 1/4"
 2'-8" X 6'-8" = 5'-6" X 1'-0 1/4"
 3'-0" X 6'-8" = 6'-2" X 1'-0 1/4"

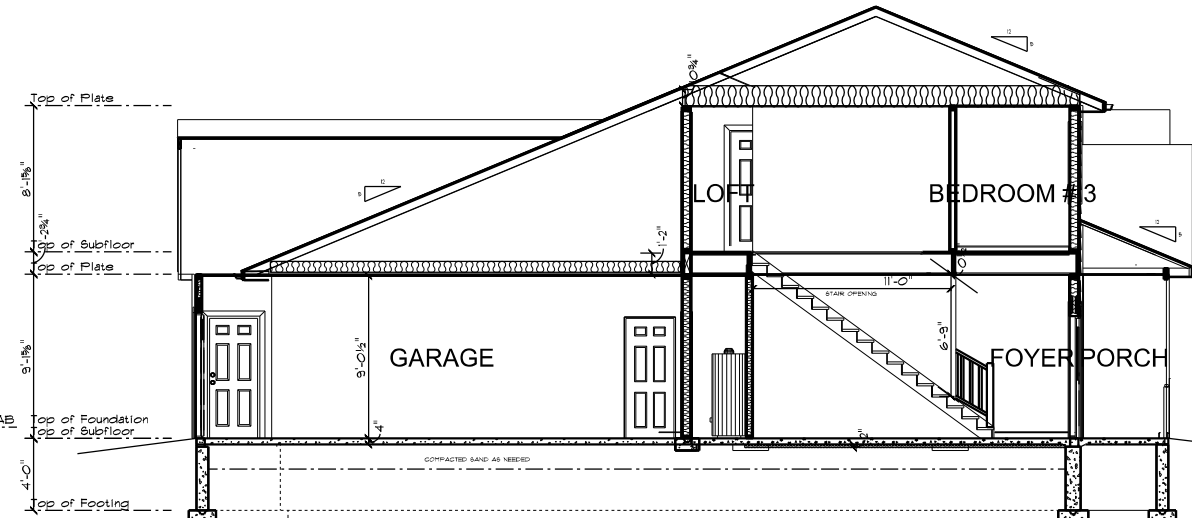
UNLESS OTHERWISE NOTED:
 HEADER HEIGHTS
 8'-1 1/8" WALLS 6'-9 3/8"
 9'-1 1/8" WALLS 7'-4"

NOTE:
 DO NOT USE CABINETS ON PLAN FOR REFERENCE. USE SEPARATE CABINET PRINTS.

TOTAL SF OF BUILDING
 6448 SF MAIN FLOORS
 1056 SF UPPER STORY
 1720 SF GARAGES
 440 SF PORCHES

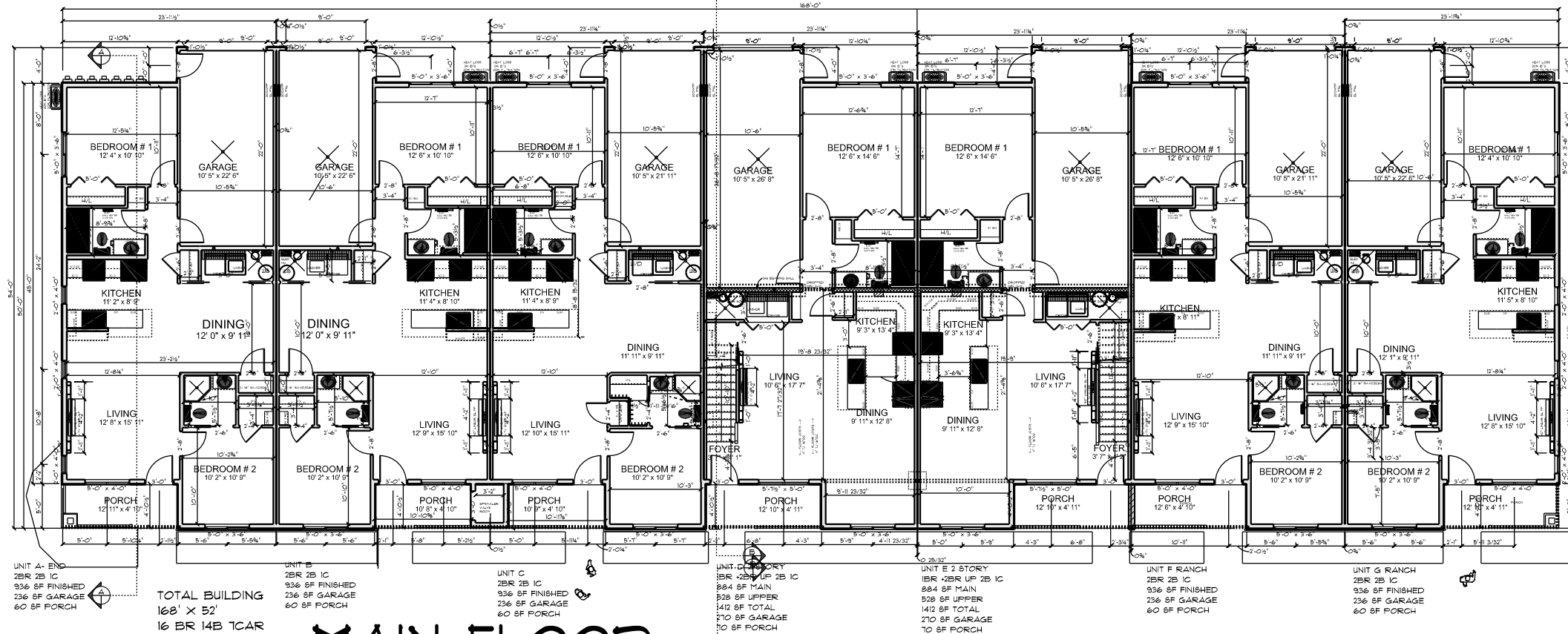


CROSS SECTION A- 2 BEDROOM



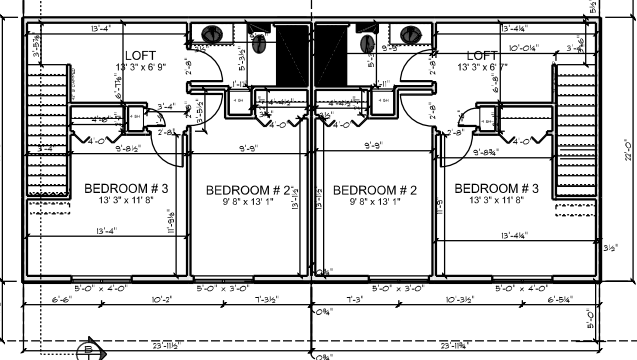
CROSS SECTION B

NAME	AREA
UNIT A- MAIN LEFT END	936 SF
UNIT A- GARAGE	236 SF
UNIT A- PORCH	60 SF
UNIT B- MAIN	936 SF
UNIT B- GARAGE	236 SF
UNIT B- PORCH	60 SF
UNIT C MAIN	936 SF
UNIT C- GARAGE	236 SF
UNIT C- PORCH	60 SF
UNIT D- MAIN 2 story	884 SF
UNIT D- UPPER	528 SF
UNIT D- GARAGE	270 SF
UNIT D- PORCH	70 SF
UNIT E- MAIN 2 story	884 SF
UNIT E- UPPER	528 SF
UNIT E- GARAGE	270 SF
UNIT E- PORCH	70 SF
UNIT F- MAIN	936 SF
UNIT F- GARAGE	236 SF
UNIT F- PORCH	60 SF
UNIT G- MAIN	936 SF
UNIT G- GARAGE	236 SF
UNIT G PORCH	60 SF



MAIN FLOOR

UPPER STORY



SPECIFICATIONS:
 FLOOR JOISTS: 14" I-JOIST 2ND FLOOR ONLY
 SHEATHING: 3/4" T&G OSB NAILED & GLUED
 EXTERIOR WALLS: MAIN: 2X6X 9'-1 1/8" @ 24" O.C.
 W BIBS FIBERGLASS R-21
 W 15/32" OSB TYEYK HOUSE WRAP
 GARAGE: 2X4 @ 16" O.C. W 15/32" OSB TYEYK HOUSE WRAP
 COMMON PARTY WALLS: DOUBLE 2X4 24"OC
 W DBL SOUND BATTs AND SOUND BOARD BETWEEN
 ROOF FRAMING: ENGINEERED TRUSSES @ 24" O.C.
 W/ 1" ENERGY HEELS SHEATHING: 15/32" OSB
 ROOF FELT: 15# FELT INSULATION: R-50 BLOWN FIBERGLASS
 WINDOWS: ALLIANCE VINYL L&E DUALPANE W/ ARGON
 EXTERIOR DOORS: STEEL W/ DEADBOLTS
 FIREPLACE: 50" ELECTRIC LINEAR FIREPLACES
 INTERIOR RAILINGS: COLONIAL, POST-TO-POST 2 STORY
 FURNACE: MULTI ZONE MINI SPLIT HEAT PUMP
 W ELECTRIC BATH HEATERS SUPPLIMENT
 AIR CONDITIONER: MINI SPLIT HEAT PUMP
 WATER HEATER: TANKLESS ELECTRIC
 WATER SOFTENER: PREP ONLY
 GAS PIPING TO: NONE

SPECIALS:
 IRRIGATION SYSTEM : N/A
 SOUND SYSTEM : N/A
 SECURITY SYSTEM : N/A
 CENTRAL VAC SYSTEM : N/A
 CORNER BEAD : STD.

POCKET DOOR R.O.'S
 2'-0" x 6'-8" = 4'-2" x T'-0 1/4"
 2'-4" x 6'-8" = 4'-10" x T'-0 1/4"
 2'-6" x 6'-8" = 5'-2" x T'-0 1/4"
 2'-8" x 6'-8" = 5'-6" x T'-0 1/4"
 3'-0" x 6'-8" = 6'-2" x T'-0 1/4"

UNLESS OTHERWISE NOTED:
 HEADER HEIGHTS
 8'-1 1/8" WALLS 6'-9 3/8"
 9'-1 1/8" WALLS T'-4"

NOTE:
 DO NOT USE CABINETS ON PLAN
 FOR REFERENCE. USE SEPARATE
 CABINET PRINTS.

TOTAL SF OF BUILDING
 6448 SF MAIN FLOORS
 1056 SF UPPER STORY
 1720 SF GARAGES
 440 SF PORCHES

NAME	AREA
UNIT A- MAIN LEFT END	936 SF
UNIT A- GARAGE	236 SF
UNIT A- PORCH	60 SF
UNIT B- MAIN	936 SF
UNIT B- GARAGE	236 SF
UNIT B- PORCH	60 SF
UNIT C MAIN	936 SF
UNIT C- GARAGE	236 SF
UNIT C- PORCH	60 SF
UNIT D- MAIN 2 story	884 SF
UNIT D- UPPER	528 SF
UNIT D- GARAGE	270 SF
UNIT D- PORCH	70 SF
UNIT E- MAIN 2 story	884 SF
UNIT E- UPPER	528 SF
UNIT E- GARAGE	270 SF
UNIT E- PORCH	70 SF
UNIT F- MAIN	936 SF
UNIT F- GARAGE	236 SF
UNIT F- PORCH	60 SF
UNIT G- MAIN	936 SF
UNIT G- GARAGE	236 SF
UNIT G PORCH	60 SF