

HAVEN ON MAIN

01.05.2024

RESIDENTIAL DATA

| | |
|---------------|----------|
| ONE BEDROOM | 36 units |
| TWO BEDROOM | 32 units |
| THREE BEDROOM | 6 units |
| | 74 units |

PARKING DATA

| | |
|--------------------------|-----------|
| INTERIOR GARAGE STALLS | 36 stalls |
| EXTERIOR AT GRADE STALLS | 35 stalls |
| | 71 stalls |

BUILDING SIZE

| | |
|--------------|--------------|
| MAIN FLOOR | 27,240 S.F. |
| SECOND FLOOR | 28,035 S.F. |
| THIRD FLOOR | 28,035 S.F. |
| FOURTH FLOOR | 28,035 S.F. |
| | 111,345 S.F. |

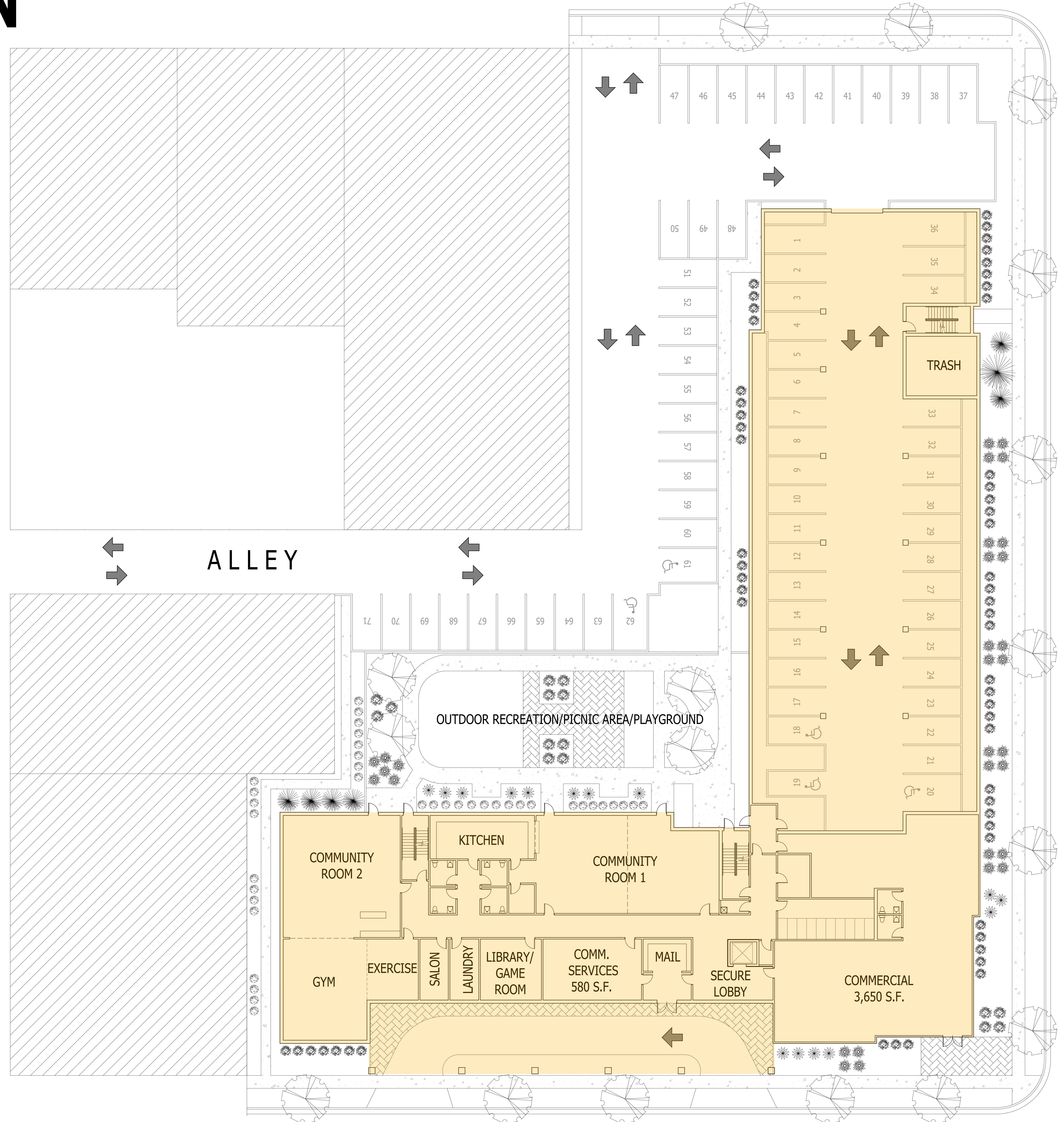
COMMERCIAL SPACE

3,100 SQUARE FEET OF COMMERCIAL

RECREATION SPACE

6,000 SQUARE FEET OF OUTDOOR RECREATION SPACE

9th STREET

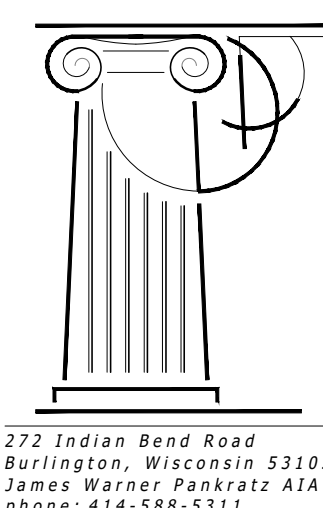


10th STREET

MAIN STREET

STATE STREET

ALLEY



SITE PLAN
SCALE: 3/32" = 1'-0"

