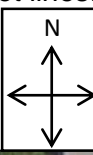


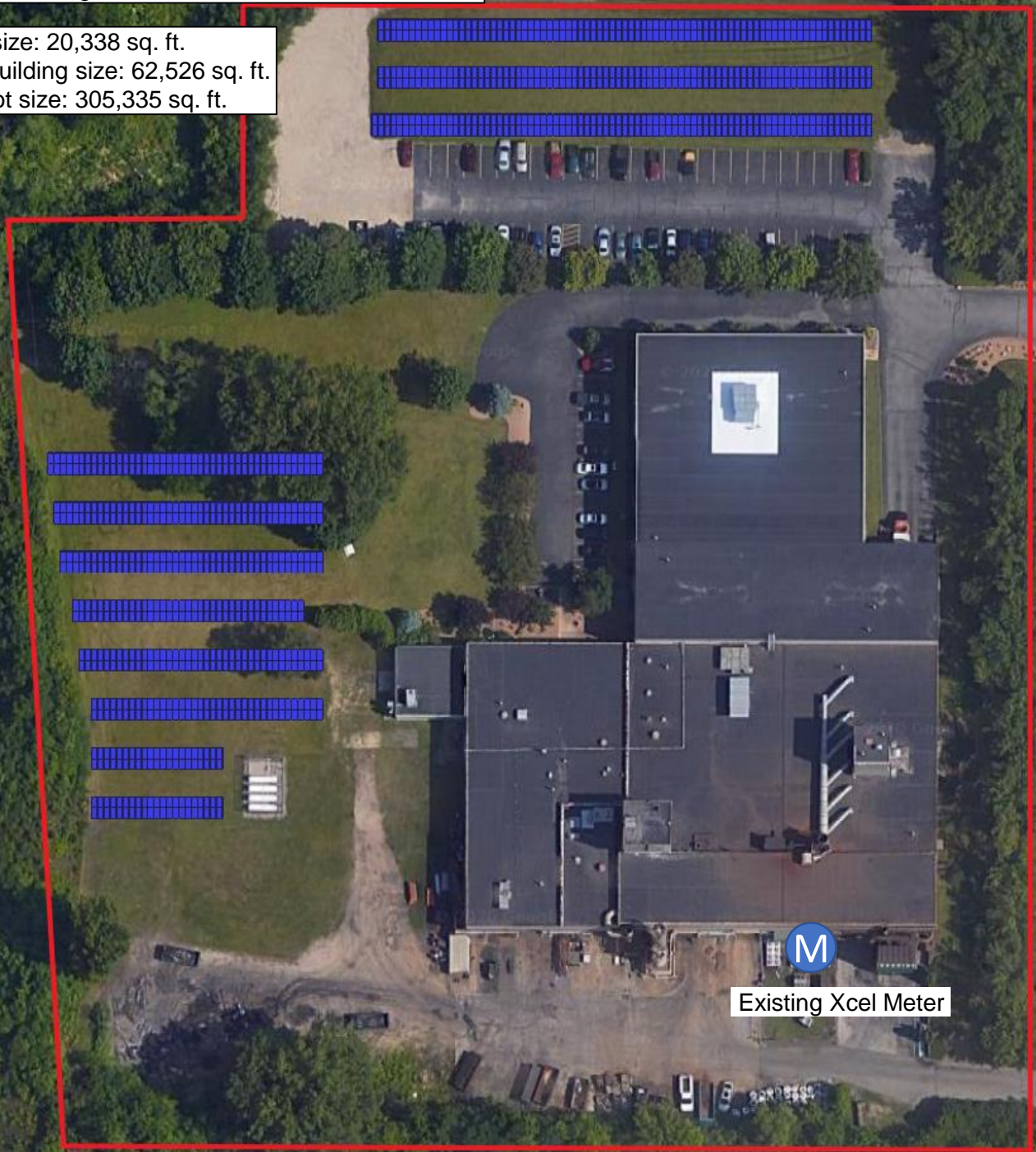
- Site notes:
- No overhead electrical lines or utilities clearance issues or concerns in regard to solar panels
 - 24/7 unescorted keyless access is provided to Xcel to utility AC disconnects
 - All conflicting trees to be removed or trimmed

System size
 (1068) 390 Watt Modules
 416.5 kW DC
 336 kW AC

Array setbacks from lot lines:
 N: 10 ft
 S: 170 ft
 E: 70 ft
 W: 10 ft



Array size: 20,338 sq. ft.
 Main building size: 62,526 sq. ft.
 Total lot size: 305,335 sq. ft.



M

Existing Xcel Meter

Property lines

SOLAR CONNECTION
 Solar Connection Inc.
 6254 34th Ave. NW Suite A
 Rochester, MN 55901
 507-292-8400

Site Info:
 Torrance Casting
 3131 Commerce St
 La Crosse, WI 54603
 608-781-0600

Date:
 1/28/2020

Drawn By:
 M. Johnson

Notes

Site Plan