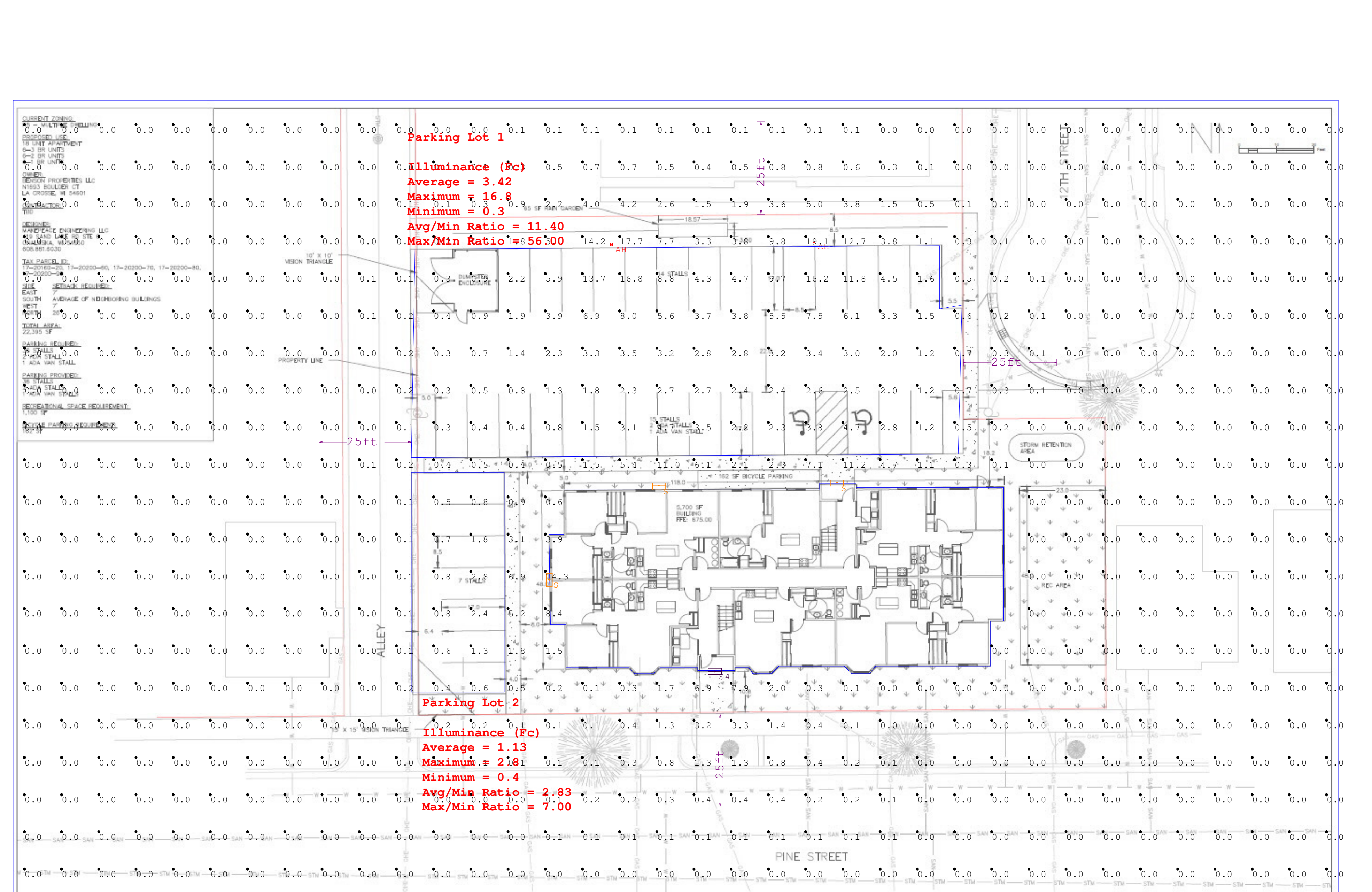


Calculation Summary											
Label	CalcType	Units	Avg	Max	Min	Avg/Min	Max/Min	Description	PtSpcLr	PtSpcTb	Meter Type
CalcPts_1	Illuminance	Fc	0.79	19.1	0.0	N.A.	N.A.	Readings Taken 0'-0" AFF	10	10	Horizontal
Parking Lot 1	Illuminance	Fc	3.42	16.8	0.3	11.40	56.00				
Parking Lot 2	Illuminance	Fc	1.13	2.8	0.4	2.83	7.00				

Luminaire Schedule												
Symbol	Qty	Tag	Label	Arrangement	Lum. Lumens	Arr. Lum. Lumens	LLF	Description	Lum. Watts	Arr. Watts	Total Watts	Filename
	3	S	SLIM17FAFC60	SINGLE	7035	7035	1.000	SLIM17FAFC60	57.23	57.23	171.69	SLIM17FAFC60_5K.ies
	2	AH	A17-4T150 - MOD50_A	SINGLE	17532	17532	1.000	A17-4T150 - MOD50+A17-RHS1	148.97	148.97	297.94	A17-4T150 - MOD50_A17-RHS1.ies
	1	S4	SLIM17FAFC40	SINGLE	4595	4595	1.000	SLIM17FAFC40	38.15	38.15	38.15	SLIM17FAFC40_5K.ies

*****LAYOUT AND BOM ARE SUBJECT TO APPROVAL*****

Expanded Luminaire Location Summary						
LumNo	Tag	X	Y	MTG HT	Orient	Tilt
1	AH	215.2	175.2	15	270	0
2	AH	160.8	174.4	15	270	0
3	S	221.4	110.2	14	90	0
4	S	144.1	84.2	14	180	0
5	S4	188.6	59.6	14	270	0
6	S	173.6	109.4	14	90	0
Total Quantity: 6						



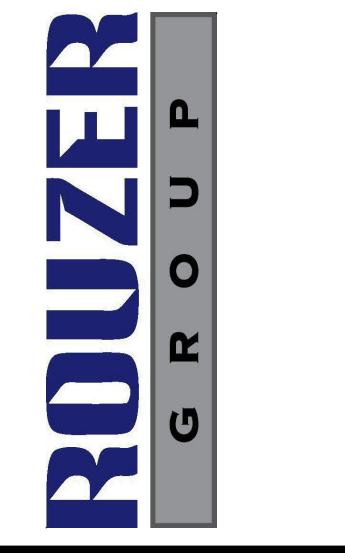
NOTES:
 * The light loss factor (LLF) is a product of many variables, only lamp lumen depreciation (LLD) has been applied to the calculated results unless otherwise noted. The LLD is the result (quotient) of mean lumens / initial lumens per lamp manufacturers' specifications.
 * Illumination values shown (in footcandles) are the predicted results for planes of calculation either to the plane of calculation.
 * The calculated results of this lighting simulation represent an anticipated prediction of system performance. Actual measured results may vary from the anticipated performance and are subject to means and methods which are beyond the control of the designer.
 * Mounting height determination is job site specific, our lighting simulations assume a mounting height (insertion point of the luminaire symbol) to be taken at the top of the symbol for ceiling mounted luminaires and at the bottom of the symbol for all other luminaire mounting configurations.
 * RAB Lighting Inc. luminaire and product designs are protected under U.S. and International intellectual property laws. horizontal, vertical or inclined as designated in the calculation summary. Meter orientation is normal. Patents issued or pending apply.

The light loss factor (LLF) is a product of many variables, only lamp lumen depreciation (LLD) has been applied to the calculated results unless otherwise noted. The LLD is the result (quotient) of mean lumens / initial lumens per lamp manufacturers' specifications.
 * The calculated results of this lighting simulation represent an anticipated prediction of system performance. Actual measured results may vary from the anticipated performance and are subject to means and methods which are beyond the control of the designer.
 * Mounting height determination is job site specific, our lighting simulations assume a mounting height (insertion point of the luminaire symbol) to be taken at the top of the symbol for ceiling mounted luminaires and at the bottom of the symbol for all other luminaire mounting configurations.
 * RAB Lighting Inc. luminaire and product designs are protected under U.S. and International intellectual property laws. horizontal, vertical or inclined as designated in the calculation summary. Meter orientation is normal. Patents issued or pending apply.

Scale: as noted
 Date: 2/21/2024
 Filename: BENSON PROPERTIES.AGI
 Drawn By: Bailey Ganske

Job Name: Benson Properties
 Lighting Layout
 Version A

Prepared For: City of Lacrosse



File name: C:\Users\bailey\OneDrive - Rouzer\OneDrive\Documents\RAB\Benson Properties\Layouts\Benson Properties.AGI
 Drawn By: Bailey Ganske