

PH

TOWN OF ONALASKA

16

157

TOWN OF CAMP BELL

Richmond Bay

Black River

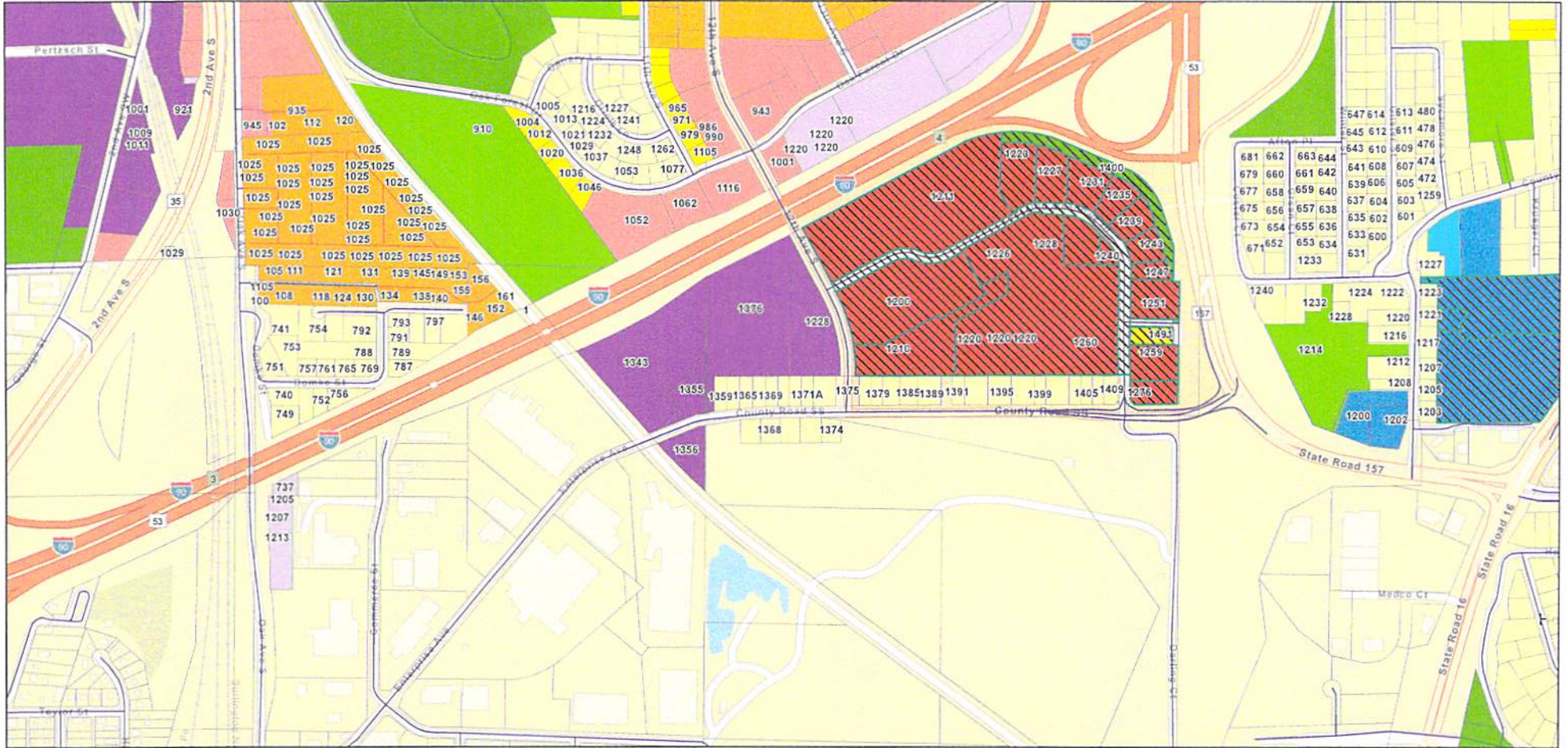
B

16

TOWN OF MEDARY

Black
Nei

City of Onalaska Zoning Map



2/25/2022, 5:41:04 PM

La Crosse County Parcels

PCID Overlay

Zoning

R-1 Low Density Residential District

R-2 Low-Medium Density Residential District

R-4 High Density Residential District

R-MMH Manufactured and Mobile Home District

B-2 Community Business District

B-3 Regional Business District

I-1 Light Industrial District

I-2 Heavy Industrial District

P-1 Public and Semi-Public District

P-2 Park and Open Space District

MU-C Mixed Use Community District

MU-N Mixed Use Neighborhood District

Streets

1:9,028

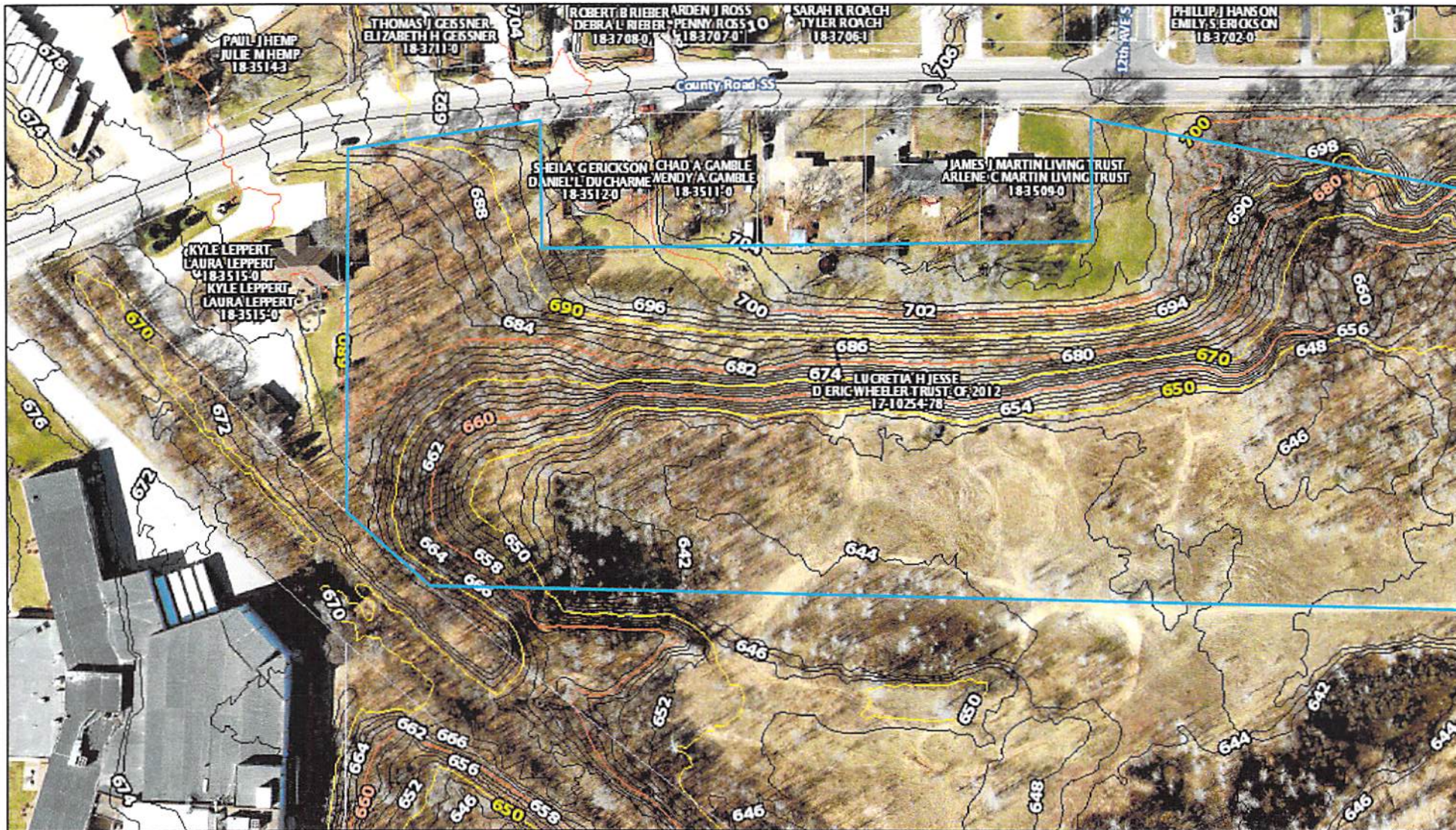
0 0.07 0.15 0.3 mi

0 0.13 0.25 0.5 km

Esri Community Maps Contributors, © OpenStreetMap, Microsoft, Esri Canada, Esri, HERE, Garmin, SafeGraph, GeoTechnologies, Inc., METI/NASA, USGS, EPA, NPS, US Census Bureau, USDA

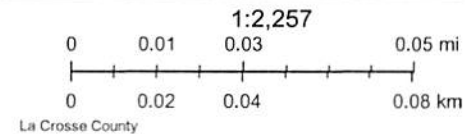
City of Onalaska GIS Services
This map is provided for informational purposes only and should not be used for planning, legal or other similar purposes.

ArcGIS Web Map



3/1/2022, 1:40:07 PM

- Municipality Limits
- County & Town Roads
- 10 Foot Contour Labels
- 20 Foot Contours
- Parcels
- Federal & State Roads
- 2 Foot Contours
- 20 Foot Contour Labels
- Owner Label
- 2 Foot Contour Labels
- 10 Foot Contours



Web AppBuilder for ArcGIS

Representative Fraction (RF) or Natural Scale: 1:1200 (this is the same as 1/1200) The RF says that 1 of any measurement on the map equals 1200 of the same measurement on the original surface; for this example 1-inch on the map equals 1200 inches or 100 feet on the surface.