



CONTACTS

CONTACTS	
ENGINEERING	DIRECTOR OF ENGINEERING & PLANNING MATT GALLAGER, P.E. 608.789.7505
PLANNING & DEVELOPMENT	DIRECTOR OF PLANNING, DEVELOPMENT AND ASSESSMENT ANDREA TRANE 608.789.8321
ELECTRIC	XCEL ENERGY – JASON MCROBERTS 715.577.1132
CABLE	CHARTER COMMUNICATIONS – PERRY MCCLELLAN 608.317.6213
GAS	XCEL ENERGY – JAKE ENDRES 608.498.3176
CABLE	LUMEN – TOM MURRAY 608.780.0895
FIRE DEPT.	FIRE CHIEF – JEFF SCHOTT 608.789.7559

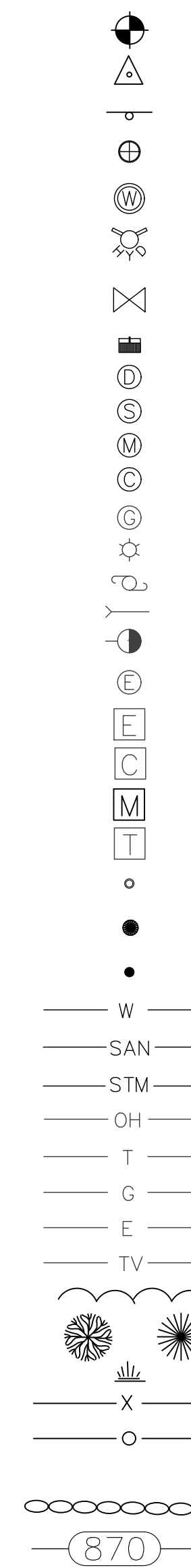
OWNER:
WESER BROTHERS GENERAL CONTRACTORS, INC.
ATTN: ETHAN THOMAS
200 TWILITE ST
LA CRESCENT, MN 55947
507.895.8903
EMAIL: ethant@weserbrothers.com

PROJECT ARCHITECT:
RIVER VALLEY ARCHITECTS, INC.
ATTN: KEVIN GUNDERSON
3300 BIRCH STREET, SUITE 1A
EAU CLAIRE, WI 54703
715.832.0875 EXT 111
EMAIL: kevin@rivervalleyarchitects.com

PROJECT ENGINEER:
ADVANCED ENGINEERING CONCEPTS
SEAN BOHAN, P.E.
1360 INTERNATIONAL DRIVE
EAU CLAIRE, WI 54701
715.552.0330
sbohan@aec.engineering

APPROVALS NEEDED	DATE SUBMITTED	APPROVAL
CITY OF LA CROSSE SITE PLAN SUBMITTAL		
DSPS-EXTERIOR PLUMBING PLAN REVIEW		

EXISTING



PROPOSED

```

-----BENCHMARK
-----CONTROL POINT
-----SIGN
-----CURB STOP
-----WELL
-----HYDRANT

-----GATE VALVE
-----CURB INLET
-----AREA DRAIN
-----SAN MH
-----STORM MH
-----SAN CLEANOUT
-----GAS MANHOLE
-----LIGHT POLE
-----UTILITY POLE
-----GUY WIRE
-----GUY POLE
-----PULL BOX
-----ELEC PED
-----CABLE PED
-----MAILBOX
-----TELE PED
-----IRON PIPE
-----ROW POST

-----REBAR
-----WATER MAIN
-----SANITARY SEWER
-----STORM SEWER
-----OVERHEAD UTILITY
-----TELEPHONE LINE
-----GAS LINE
-----ELECTRIC LINE
-----CABLE TV LINE
-----TREELINE
-----EXISTING TREES
-----MARSH
-----FENCE LINE
-----WOVEN WIRE FENCE
-----SILT FENCE
-----RETAINING WALL
-----CONTOURS MAJOR
-----CONTOURS MINOR

```

ABBREVIATIONS:
BC=BACK OF CURB
BLK=BLACK NUMBER
BOT=BOTTOM (ELEV)
CL=CENTERLINE
CS=CURB STOP
ELEV=ELEVATION
EOP=EDGE OF PAVEMENT
EX=EXISTING
FES=FLARED END SECTION
FF=FINISHED FLOOR (ELEV)
FL=FLOWLINE
GG=GARAGE FLOOR (ELEV)
GLG=GROUND LINE GROOVE
HWL=HIGH WATER LEVEL
INV=INVERT
LF=LINEAR FEET
LO=LOOKOUT STYLE HOME
LT=LEFT
MIN=MINIMUM
NWL=NORMAL WATER LEVEL
PC=POINT OF CURVE
PRC=CURVE REVERSAL POINT
PT=POINT OF TANGENCY
RAD=RADIUS
RT=RIGHT
R/W=RIGHT OF WAY
S=SEWERY SEWER
SP=SPOT ELEVATION
STA=STATION
STM=STORM SEWER
TC=TOP OF CURB
TYP=TYPICAL
W=WATER FITTINGS
WAT=WATER
WM=WATERMAIN
WO=WALKOUT STYLE HOME

SHEET NO.	DESCRIPTION
G001	TITLE SHEET
C101	EXISTING CONDITIONS & DEMOLITION PLAN
C201	SITE PLAN
C301	GRADING PLAN
C302	EROSION CONTROL
C401	UTILITY PLAN
C501-502	DETAILS

AEC PROJECT #: 25020 PLANS DATED: MAY 2025



ADVANCED ENGINEERING CONCEPTS
1360 INTERNATIONAL DR.
EAU CLAIRE, WI 54701
PH 715-552-0330
INFO@AEC.ENGINEERING
COPYRIGHT 2025, AEC LLC.

NOT FOR CONSTRUCTION - CITY DESIGN REVIEW


AEC
 ADVANCED ENGINEERING CONCEPTS


RVA
RIVER VALLEY ARCHITECTS

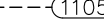






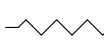
**KWIK TRIP
CLINIC & PHARMACY**
2839 DARLING COURT, LA CROSSE, WI 54601

DRAWN BY:								JRC	
								SPB	
B NO:								25020	
TE:								05.02.2025	

TITLE SHEET

G001

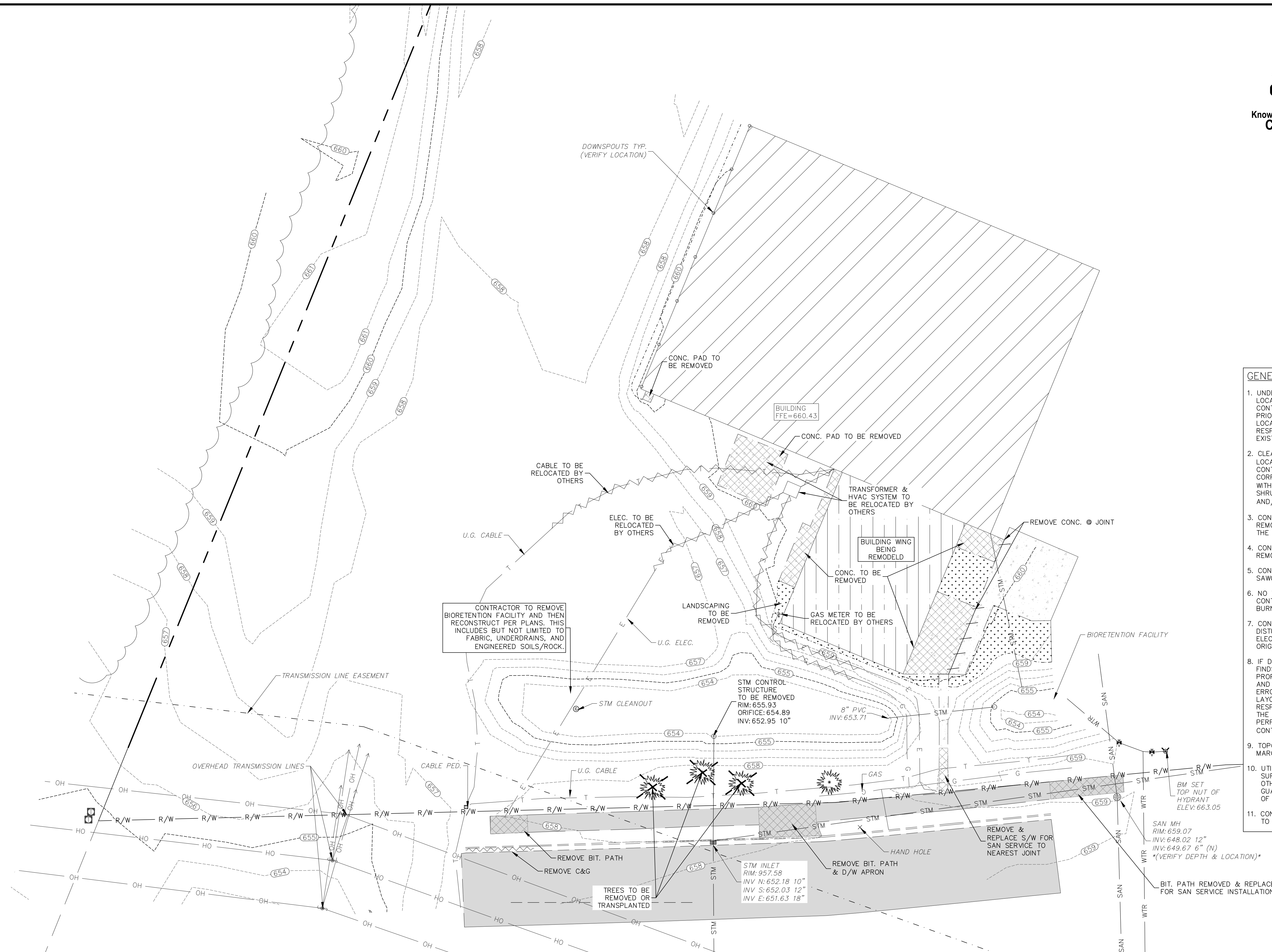


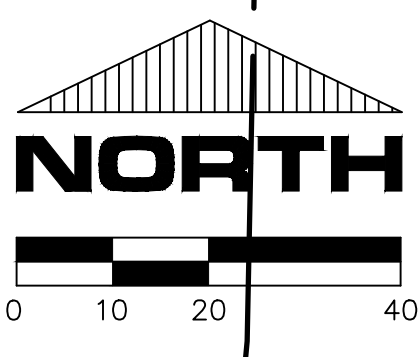
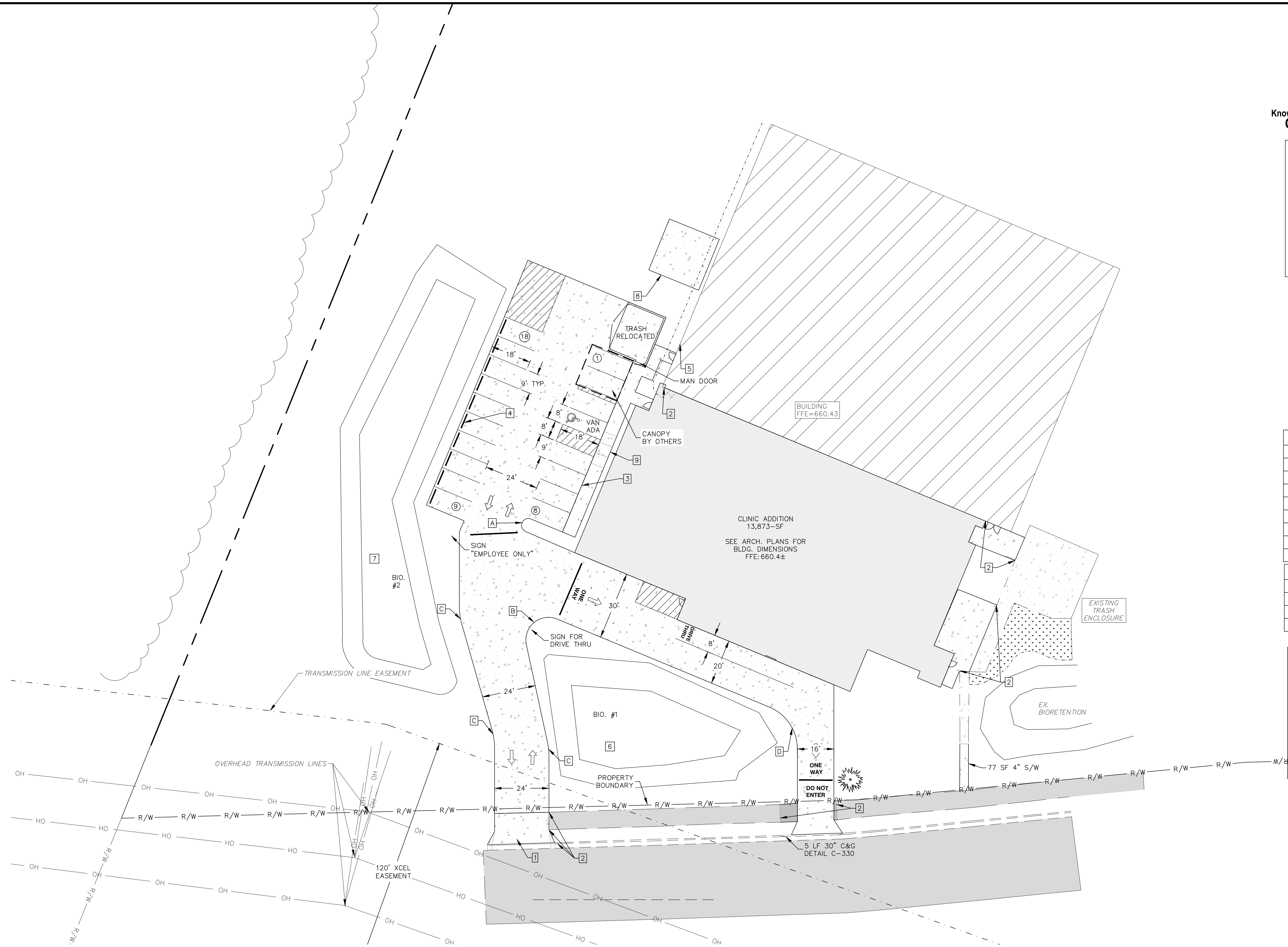
- | | |
|---|---|
|  | EXISTING CONTOURS—MNR |
|  | EXISTING CONTOURS—MJR |
|  | CLEAR AND GRUB TREES
(CLEARING LIMITS) |
|  | REMOVE PAVEMENT |
|  | FULL-DEPTH SAWCUT |
|  | CURB & GUTTER REMOVAL |
|  | UTILITY REMOVAL |
|  | BUILDING REMOVAL |

GENERAL NOTES:

1. UNDERGROUND UTILITIES ARE SHOWN IN APPROXIMATE LOCATIONS ONLY AND ARE NOT SHOWN IN THEIR ENTIRETY. CONTRACTOR SHALL NOTIFY UTILITIES A MINIMUM OF 3 DAYS PRIOR TO ANY EXCAVATION FOR FIELD VERIFICATION OF LOCATIONS. THE CLIENT, CITY, AND THE ENGINEER ARE NOT RESPONSIBLE OR LIABLE FOR ANY DAMAGE CAUSED TO EXISTING UTILITIES.
2. CLEARING AND GRUBBING SHALL ONLY BE IN THOSE LOCATIONS DIRECTED BY THE ENGINEER AND/OR OWNER. CONTRACTOR SHALL PROTECT ALL TREES, SHRUBS, AND CORRESPONDING ROOTS FROM DAMAGE. ALL WORK WITH POTENTIAL IMPACT ON UN-CLEARED TREES AND/OR SHRUBS SHALL BE COORDINATED WITH THE ENGINEER AND/OR OWNER.
3. CONTRACTOR SHALL NOT DISTURB ANY R/W IRONS. ANY REMOVAL SHALL BE APPROVED BY THE ENGINEER, OTHERWISE THE CONTRACTOR SHALL BE BILLED FOR REPLACEMENT.
4. CONTRACTOR SHALL VERIFY THE AMOUNT OF PAVEMENT REMOVAL WITH THE PROJECT MANAGER.
5. CONTRACTOR TO COORDINATE LOCATIONS AND LIMITS OF SAWCUTS WITH THE PROJECT MANAGER.
6. NO TREES OR STUMPS ARE TO BE BURNED ON SITE. CONTRACTOR IS RESPONSIBLE FOR ANY PERMITS FOR BURNING OR MATERIAL DISPOSAL.
7. CONTRACTOR TO REPAIR AND RESTORE ANY DAMAGED OR DISTURBED AREAS OF PAVEMENT, CONCRETE, LANDSCAPING, ELECTRICAL, AND AUTOMATIC IRRIGATION, ETC. TO ITS ORIGINAL CONDITION ON ADJACENT PROPERTIES.
8. IF DURING THE COURSE OF CONSTRUCTION THE CONTRACTOR FINDS ANY DISCREPANCIES OR CONFLICTS BETWEEN THE PROPOSED SITE IMPROVEMENTS AND/OR ON THE PLANS AND THE PHYSICAL CONDITIONS OF THE SITE, OR ANY ERRORS OR OMISSIONS WITHIN THE PLANS OR IN THE SITE LAYOUT PROVIDED BY THE ENGINEER, IT SHALL BE THE RESPONSIBILITY OF THE CONTRACTOR TO IMMEDIATELY NOTIFY THE ENGINEER. UNTIL AUTHORIZED TO PROCEED, ANY WORK PERFORMED AFTER SUCH DISCOVERY WILL BE AT THE CONTRACTOR'S SOLE RISK AND EXPENSE.
9. TOPOGRAPHIC SURVEY PERFORMED BY REAL LAND SURVEYING MARCH 10, 2025.
10. UTILITY SIZES AND LOCATIONS ARE COMPILED FROM SURVEYS AND AS-BUILTS INFORMATION PROVIDED BY OTHERS. ADVANCED CIVIL ENGINEERING CONCEPTS MAKES NO GUARANTEE AND IS NOT RESPONSIBLE FOR THE ACCURACY OF THE EXISTING LINework.
11. CONTRACTOR TO VERIFY EXISTING PRIVATE UTILITIES PRIOR TO ANY CONSTRUCTION TAKE PLAGE.

NOTE:
CONTRACTOR TO FIELD VERIFY
EXISTING UTILITY LOCATIONS





KWIK TRIP CLINIC & PHARMACY
2835 DARLING COURT

PROPOSED ADDITION: 13,873-SF
PROPOSED CONC. PAVEMENT: 14,476-SF
PROPOSED CONC. PAD/SIDEWALK: 1,704-SF
OVERALL NEW IMPERVIOUSNESS: 30,055-SF

PARKING STALLS: 18 NEW

SETBACKS:
FRONT: 20'
SIDE: 10'
REAR: 0'

HATCHING LEGEND

- EXISTING CONCRETE PAVEMENT
- EXISTING BUILDING
- PROPOSED BUILDING
- PROPOSED CONCRETE PAVEMENT (SIDEWALKS: 4" THICKNESS) (IF EXPOSED TO VEHICULAR TRAFFIC: 6" THICKNESS)

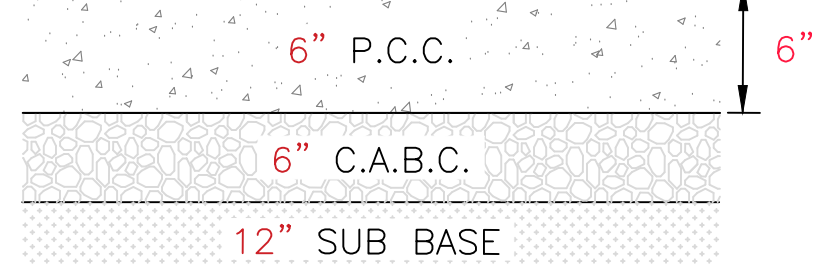
SITE PLAN KEY NOTES

- D/W APRON DETAIL C-410
- MATCH EXISTING
- S/W CURB DETAIL C-390
- CONC. WHEEL STOP TYP.
- EX. DOWNSPOUTS
- RESHAPED BIOTRETENTION FACILITY
- NEW BIOTRETENTION FACILITY
- MECHANICALS
- ADA RAMP DETAIL C-434

RADIUS KEY

- A 3' RAD
- B 10' RAD
- C 30' RAD
- D 20' RAD

CONCRETE PAVEMENT SECTION



NOTE: PAVEMENT SECTIONS TO BE RECOMMENDED BY GENERAL CONTRACTOR OR GEOTECHNICAL ENGINEER. PAVEMENT SECTIONS ARE SHOWN FOR HOLD-DOWN CALCULATIONS ONLY.

CIRCULATION PLAN

VEHICULAR TRAFFIC DIRECTION

NOTE:
CONTRACTOR TO FIELD VERIFY
EXISTING UTILITY LOCATIONS



KWIK TRIP
CLINIC & PHARMACY
2835 DARLING COURT, LA CROSSE, WI 54601

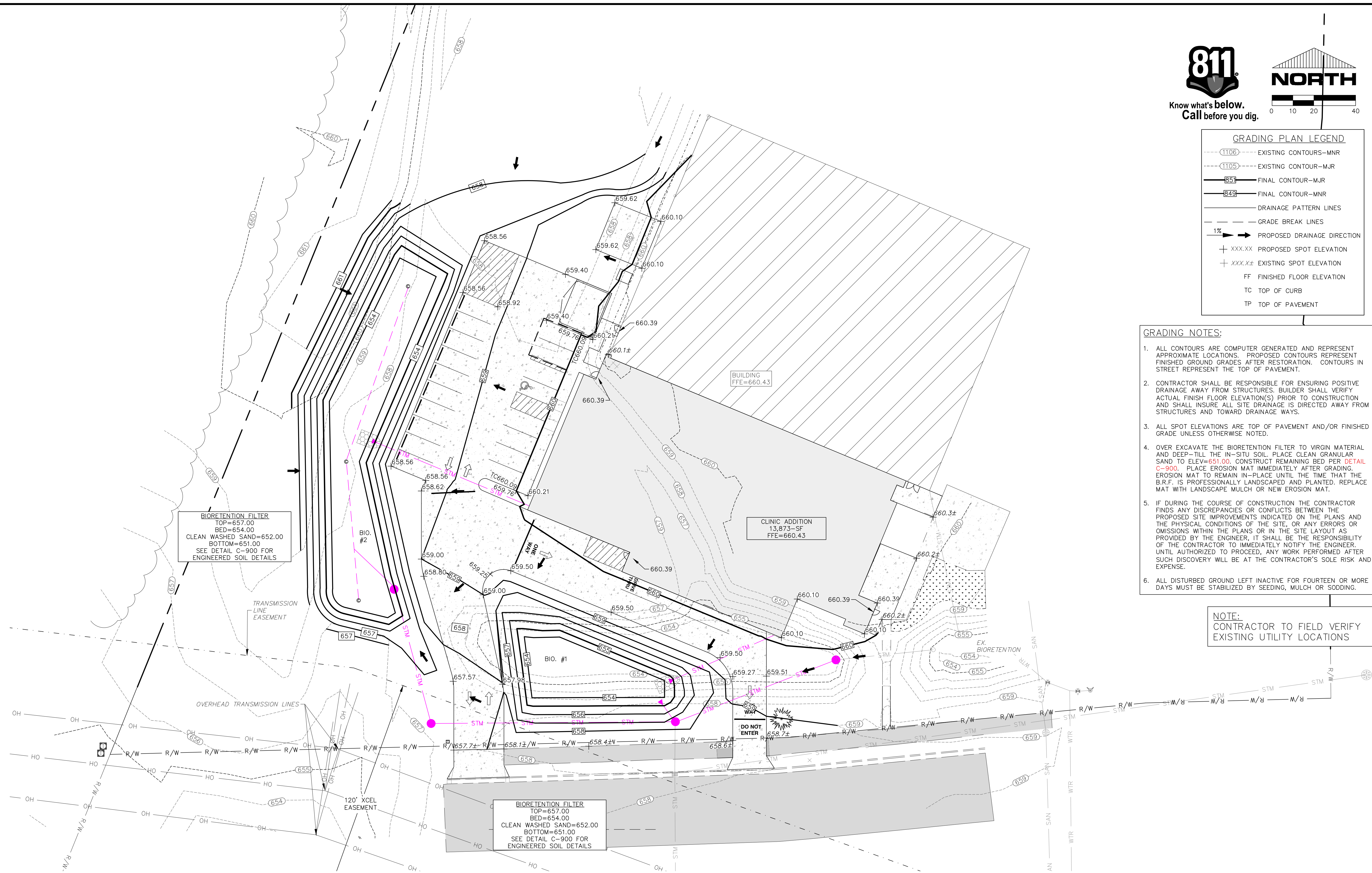
NO.	DATE	DESCRIPTION

DRAWN BY: JRC
PM: SPB
JOB NO: 25020
DATE: 05.02.2025

SITE PLAN

C201

NOT FOR CONSTRUCTION - CITY DESIGN REVIEW



GRADING PLAN LEGEND	
---(1106)---	EXISTING CONTOURS-MNR
---(1105)---	EXISTING CONTOUR-MJR
---(655)---	FINAL CONTOUR-MJR
---(649)---	FINAL CONTOUR-MNR
---	DRAINAGE PATTERN LINES
---	GRADE BREAK LINES
1%	PROPOSED DRAINAGE DIRECTION
+ XXX.XX	PROPOSED SPOT ELEVATION
+ XXX.X±	EXISTING SPOT ELEVATION
FF	FINISHED FLOOR ELEVATION
TC	TOP OF CURB
TP	TOP OF PAVEMENT

- GRADING NOTES:**
- ALL CONTOURS ARE COMPUTER GENERATED AND REPRESENT APPROXIMATE LOCATIONS. PROPOSED CONTOURS REPRESENT FINISHED GROUND GRADES AFTER RESTORATION. CONTOURS IN STREET REPRESENT THE TOP OF PAVEMENT.
 - CONTRACTOR SHALL BE RESPONSIBLE FOR ENSURING POSITIVE DRAINAGE AWAY FROM STRUCTURES. BUILDER SHALL VERIFY ACTUAL FINISH FLOOR ELEVATION(S) PRIOR TO CONSTRUCTION AND SHALL INSURE ALL SITE DRAINAGE IS DIRECTED AWAY FROM STRUCTURES AND TOWARD DRAINAGE WAYS.
 - ALL SPOT ELEVATIONS ARE TOP OF PAVEMENT AND/OR FINISHED GRADE UNLESS OTHERWISE NOTED.
 - OVER EXCAVATE THE BIORETENTION FILTER TO VIRGIN MATERIAL AND DEEP-TILL THE IN-SITU SOIL. PLACE CLEAN GRANULAR SAND TO ELEV=651.00. CONSTRUCT REMAINING BED PER DETAIL C-900. PLACE EROSION MAT IMMEDIATELY AFTER GRADING. EROSION MAT TO REMAIN IN-PLACE UNTIL THE TIME THAT THE B.R.F. IS PROFESSIONALLY LANDSCAPED AND PLANTED. REPLACE MAT WITH LANDSCAPE MULCH OR NEW EROSION MAT.
 - IF DURING THE COURSE OF CONSTRUCTION THE CONTRACTOR FINDS ANY DISCREPANCIES OR CONFLICTS BETWEEN THE PROPOSED SITE IMPROVEMENTS INDICATED ON THE PLANS AND THE PHYSICAL CONDITIONS OF THE SITE, OR ANY ERRORS OR OMISSIONS WITHIN THE PLANS OR IN THE SITE LAYOUT AS PROVIDED BY THE ENGINEER, IT SHALL BE THE RESPONSIBILITY OF THE CONTRACTOR TO IMMEDIATELY NOTIFY THE ENGINEER. UNTIL AUTHORIZED TO PROCEED, ANY WORK PERFORMED AFTER SUCH DISCOVERY WILL BE AT THE CONTRACTOR'S SOLE RISK AND EXPENSE.
 - ALL DISTURBED GROUND LEFT INACTIVE FOR FOURTEEN OR MORE DAYS MUST BE STABILIZED BY SEEDING, MULCH OR SODDING.

NOTE:
CONTRACTOR TO FIELD VERIFY
EXISTING UTILITY LOCATIONS

NOT FOR CONSTRUCTION - CITY DESIGN REVIEW

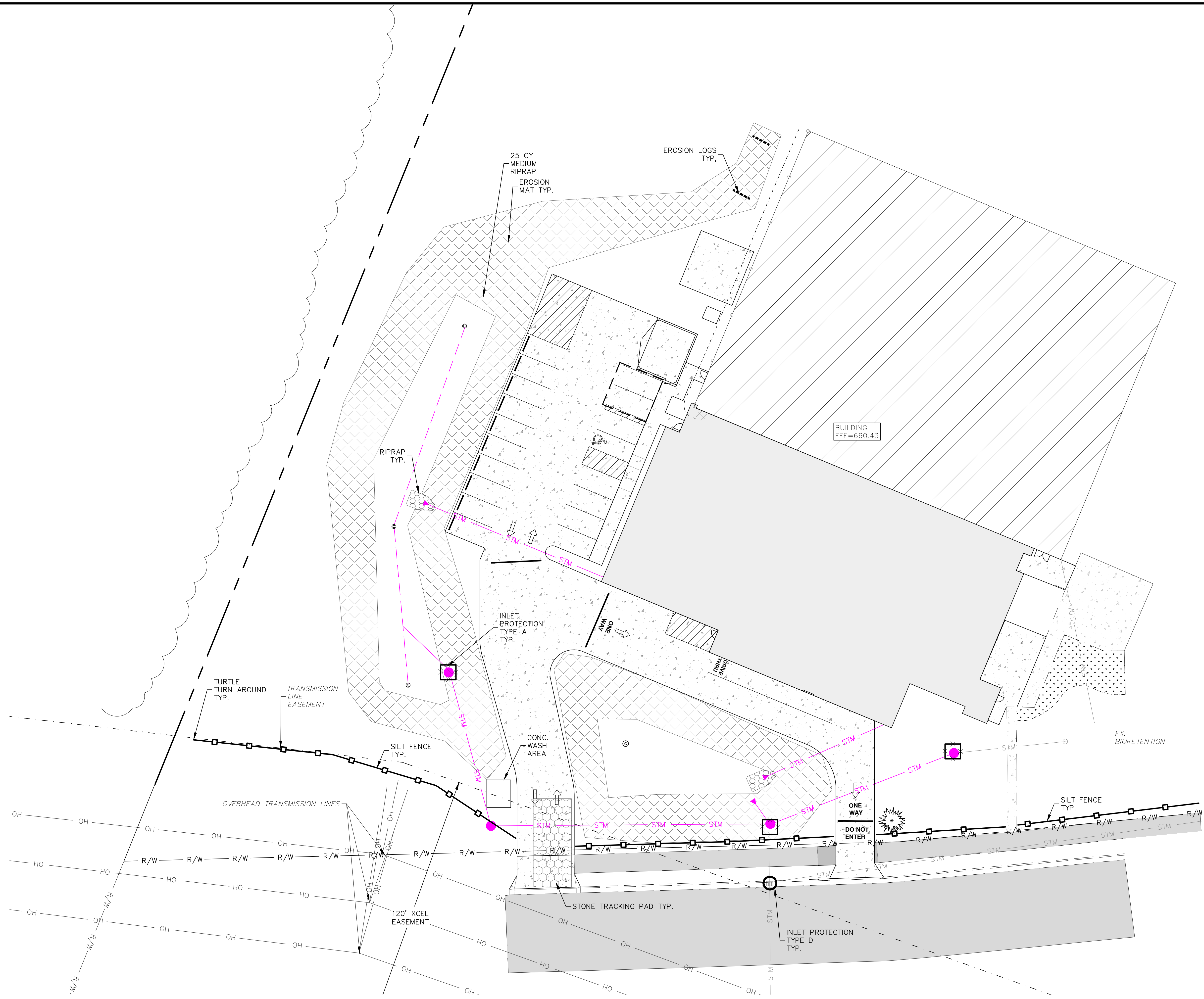


**KWIK TRIP
CLINIC & PHARMACY**
2838 DARLING COURT, LA CROSSE, WI 54601

NO.	DATE	DESCRIPTION

DRAWN BY: JRC
PM: SPB
JOB NO: 25020
DATE: 05.02.2025

GRADING PLAN
C301



EROSION CONTROL LEGEND

	SILT FENCE DETAIL C-210
	STONE TRACKING PAD DETAIL C-400
	EROSION MAT DETAIL C-220
	RIPRAP DETAIL C-111
	INLET PROTECTION TYPE-A DETAIL C-211
	INLET PROTECTION TYPE-D DETAIL C-213
	EROSION LOGS DETAIL C-205

THE EROSION CONTROL ON THIS PLAN HAS BEEN PREPARED AS A GUIDE. THE CONTRACTOR SHALL BE RESPONSIBLE FOR MAINTAINING, MODIFYING AND IMPLEMENTING AN ALTERNATE EROSION CONTROL PLAN BASED ON THEIR MEANS, METHODS, TECHNIQUES, SEQUENCES, AND PROCEDURES OF CONSTRUCTION.

EROSION CONTROL NOTES:

1. POST WDNR CERTIFICATE OF PERMIT COVERAGE ON SITE AND MAINTAIN UNTIL CONSTRUCTION ACTIVITIES HAVE CEASED, THE SITE IS STABILIZED, AND A NOTICE OF TERMINATION IS FILED WITH WDNR.
2. KEEP A COPY OF THE CURRENT EROSION CONTROL PLAN ON SITE THROUGHOUT THE DURATION OF THE PROJECT.
3. SUBMIT PLAN REVISIONS OR AMENDMENTS TO THE WDNR AT LEAST 5 DAYS PRIOR TO FIELD IMPLEMENTATION.
4. GENERAL CONTRACTOR IS RESPONSIBLE FOR ROUTINE SITE INSPECTIONS AT LEAST ONCE EVERY 7 DAYS AND WITHIN 24 HOURS AFTER A RAINFALL EVENT OF 0.5 INCHES OR GREATER. KEEP INSPECTION REPORTS ON-SITE AND MAKE THEM AVAILABLE UPON REQUEST.
5. INSPECT AND MAINTAIN ALL INSTALLED EROSION CONTROL PRACTICES UNTIL THE CONTRIBUTING DRAINAGE AREA HAS BEEN STABILIZED.
6. WHEN POSSIBLE: PRESERVE EXISTING VEGETATION (ESPECIALLY ADJACENT TO SURFACE WATERS), MINIMIZE LAND-DISTURBING CONSTRUCTION ACTIVITY ON SLOPES OF 20% OR MORE, MINIMIZE SOIL COMPACTION, AND PRESERVE TOPSOIL.
7. REFER TO THE WDNR STORMWATER CONSTRUCTION TECHNICAL STANDARDS AT http://dnr.wi.gov/topic/stormwater/standards/const_standards.html
8. INSTALL PERIMETER EROSION CONTROLS AND STONE TRACKING PAD CONSTRUCTION ENTRANCE(S) PRIOR TO ANY LAND-DISTURBING ACTIVITIES, INCLUDING CLEARING AND GRUBBING. USE WDNR TECHNICAL STANDARD STONE TRACKING PAD AND TIRE WASHING #1057 FOR ROCK CONSTRUCTION ENTRANCE(S).
9. INSTALL INLET PROTECTION PRIOR TO LAND-DISTURBING ACTIVITIES IN THE CONTRIBUTING DRAINAGE AREA AND/OR IMMEDIATELY UPON INLET INSTALLATION. COMPLY WITH WDNR TECHNICAL STANDARD STORM DRAIN INLET PROTECTION FOR CONSTRUCTION SITES #1060.
10. STAGE CONSTRUCTION GRADING ACTIVITIES TO MINIMIZE THE CUMULATIVE EXPOSED AREA. CONDUCT TEMPORARY GRADING FOR EROSION CONTROL PER WDNR TECHNICAL STANDARD TEMPORARY GRADING PRACTICES FOR EROSION CONTROL #1067.
11. PERMITTING OF GROUNDWATER DEWATERING IS THE RESPONSIBILITY OF [ENTER RESPONSIBLE PARTY]. GROUNDWATER DEWATERING IS SUBJECT TO A DNR WASTEWATER DISCHARGE PERMIT AND A DNR HIGH CAPACITY WELL APPROVAL IF CUMULATIVE PUMP CAPACITY IS 70 GPM OR MORE. (Rev. February 2017).
12. PROVIDE ANTI-SCOUR PROTECTION AND MAINTAIN NON-EROSIVE FLOW DURING DEWATERING. PERFORM DEWATERING OF ACCUMULATED SURFACE RUNOFF IN ACCORDANCE WITH WDNR TECHNICAL STANDARD DE-WATERING #1061. (Rev. April 2020)
13. COMPLETE AND STABILIZE SEDIMENT BASINS/TRAPS OR WET PONDS PRIOR TO MASS LAND DISTURBANCE TO CONTROL RUNOFF DURING CONSTRUCTION. REMOVE SEDIMENT AS NEEDED TO MAINTAIN 3 FEET OF DEPTH TO THE OUTLET, AND PROPERLY DISPOSE OF SEDIMENT REMOVED DURING MAINTENANCE (REFER TO NRS28). CONSTRUCT AND MAINTAIN THE SEDIMENT BASIN PER WDNR TECHNICAL STANDARD SEDIMENT BASIN #1064 AND SEDIMENT TRAP #1063.
14. CONSTRUCT AND PROTECT THE BIORETENTION FILTER AND VEGETATION FROM RUNOFF AND SEDIMENT DURING CONSTRUCTION. REFERENCE THE WDNR TECHNICAL STANDARD BIORETENTION #1004.
15. INSTALL AND MAINTAIN SILT FENCING PER WDNR TECHNICAL STANDARD SILT FENCE #1056. REMOVE SEDIMENT FROM BEHIND SILT FENCES AND SEDIMENT BARRIERS BEFORE SEDIMENT REACHES A DEPTH THAT IS EQUAL TO ONE-HALF OF THE FENCE AND/OR BARRIER HEIGHT.
16. REPAIR BREAKS AND GAPS IN SILT FENCES AND BARRIERS IMMEDIATELY. REPLACE DECOMPOSING STRAW BALES (TYPICAL BALE LIFE IS 3 MONTHS). LOCATE, INSTALL, AND MAINTAIN STRAW BALES PER WDNR TECHNICAL STANDARD DITCH CHECKS #1062.
17. IMMEDIATELY STABILIZE STOCKPILES AND SURROUND STOCKPILES AS NEEDED WITH SILT FENCE OR OTHER PERIMETER CONTROL IF STOCKPILES WILL REMAIN INACTIVE FOR 7 DAYS OR LONGER.
18. IMMEDIATELY STABILIZE ALL DISTURBED AREAS THAT WILL REMAIN INACTIVE FOR 14 DAYS OR LONGER. BETWEEN SEPTEMBER 15 AND OCTOBER 15: STABILIZE WITH MULCH, TACKIFIER, AND A PERENNIAL SEED MIXED WITH WINTER WHEAT, ANNUAL OATS, OR ANNUAL RYE, AS APPROPRIATE FOR REGION AND SOIL TYPE. OCTOBER 15 THROUGH COLD WEATHER: STABILIZE WITH A POLYMER AND DORMANT SEED MIX, AS APPROPRIATE FOR REGION AND SOIL TYPE.
19. STABILIZE AREAS OF FINAL GRADING WITHIN 7 DAYS OF REACHING FINAL GRADE.
20. SWEEP/CLEAN UP ALL SEDIMENT/TRASH THAT MOVES OFF-SITE DUE TO CONSTRUCTION ACTIVITY OR STORM EVENTS BEFORE THE END OF THE SAME WORKDAY OR AS DIRECTED BY CITY. SEPARATE SWEEP MATERIALS (SOILS AND TRASH) AND DISPOSE OF APPROPRIATELY.
21. GENERAL CONTRACTOR IS RESPONSIBLE FOR CONTROLLING DUST PER WDNR TECHNICAL STANDARD DUST CONTROL ON CONSTRUCTION SITES #1068.
22. PROPERLY DISPOSE OF ALL WASTE AND UNUSED BUILDING MATERIALS (INCLUDING GARBAGE, DEBRIS, CLEANING WASTES, OR OTHER CONSTRUCTION MATERIALS) AND DO NOT ALLOW THESE MATERIALS TO BE CARRIED BY RUNOFF INTO THE RECEIVING CHANNEL.
23. COORDINATE WITH ENGINEER TO UPDATE THE LAND DISTURBANCE PERMIT TO INDICATE THE ANTICIPATED OR LIKELY DISPOSAL LOCATIONS FOR ANY EXCAVATED SOILS OR CONSTRUCTION DEBRIS THAT WILL BE HAULED OFF-SITE FOR DISPOSAL. THE DEPOSITED OR STOCKPILED MATERIAL NEEDS TO INCLUDE PERIMETER SEDIMENT CONTROL MEASURES (SUCH AS SILT FENCE, HAY BALES, FILTER SOCKS, OR COMPACTED EARTHEN BERM).
24. FOR NON-CHANNELIZED FLOW ON DISTURBED OR CONSTRUCTED SLOPES, PROVIDE CLASS I TYPE A EROSION CONTROL MATTING. SELECT EROSION MATTING FROM APPROPRIATE MATRIX IN WDOTS WDOT PRODUCT ACCEPTABILITY LIST (PAL); INSTALL AND MAINTAIN PER WDNR TECHNICAL STANDARD NON-CHANNEL EROSION MAT #1052.
25. FOR CHANNELIZED FLOW ON DISTURBED OR CONSTRUCTED AREAS, PROVIDE CLASS II TYPE B EROSION CONTROL MATTING. SELECT EROSION MATTING FROM APPROPRIATE MATRIX IN WDOTS

NOT FOR CONSTRUCTION - CITY DESIGN REVIEW

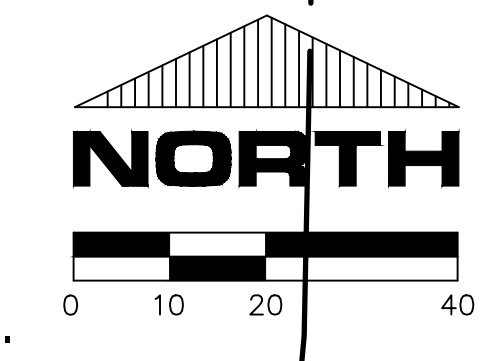
**KWIK TRIP
CLINIC & PHARMACY**
2838 DARLING COURT, LA CROSSE, WI 54601

NO.	DATE	DESCRIPTION

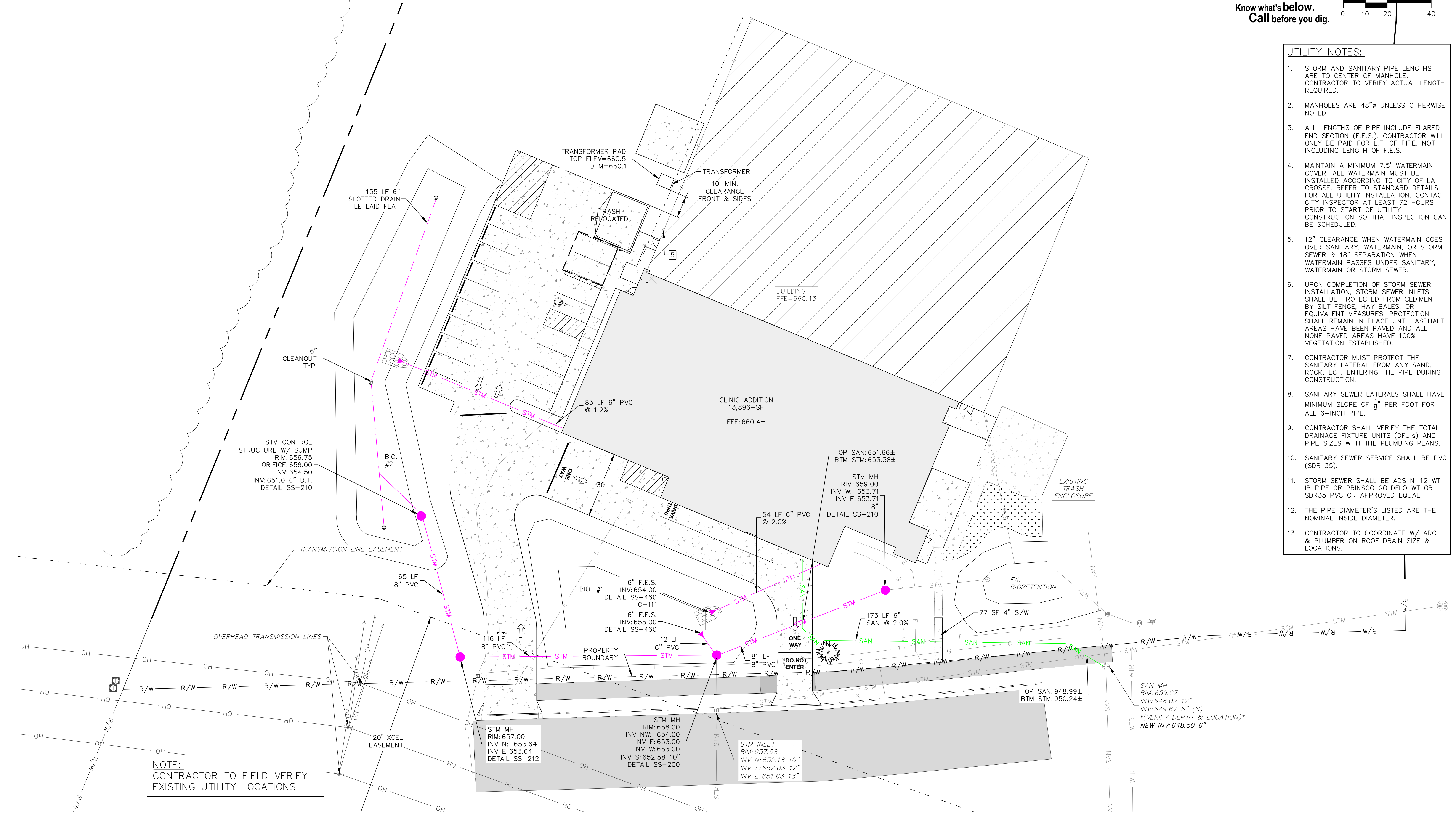
DRAWN BY: JRC
PM: SPB
JOB NO: 25020
DATE: 05.02.2025

EROSION
CONTROL PLAN



C302



- UTILITY NOTES:
1. STORM AND SANITARY PIPE LENGTHS ARE TO CENTER OF MANHOLE. CONTRACTOR TO VERIFY ACTUAL LENGTH REQUIRED.
 2. MANHOLES ARE 48"Ø UNLESS OTHERWISE NOTED.
 3. ALL LENGTHS OF PIPE INCLUDE FLARED END SECTION (F.E.S.). CONTRACTOR WILL ONLY BE PAID FOR L.F. OF PIPE, NOT INCLUDING LENGTH OF F.E.S.
 4. MAINTAIN A MINIMUM 7.5' WATERMAIN COVER. ALL WATERMAIN MUST BE INSTALLED ACCORDING TO CITY OF LA CROSSE. REFER TO STANDARD DETAILS FOR ALL UTILITY INSTALLATION. CONTACT CITY INSPECTOR AT LEAST 72 HOURS PRIOR TO START OF UTILITY CONSTRUCTION SO THAT INSPECTION CAN BE SCHEDULED.
 5. 12" CLEARANCE WHEN WATERMAIN GOES OVER SANITARY, WATERMAIN, OR STORM SEWER & 18" SEPARATION WHEN WATERMAIN PASSES UNDER SANITARY, WATERMAIN OR STORM SEWER.
 6. UPON COMPLETION OF STORM SEWER INSTALLATION, STORM SEWER INLETS SHALL BE PROTECTED FROM SEDIMENT BY SILT FENCE, HAY BALES, OR EQUIVALENT MEASURES. PROTECTION SHALL REMAIN IN PLACE UNTIL ASPHALT AREAS HAVE BEEN PAVED AND ALL NONE PAVED AREAS HAVE 100% VEGETATION ESTABLISHED.
 7. CONTRACTOR MUST PROTECT THE SANITARY LATERAL FROM ANY SAND, ROCK, ECT. ENTERING THE PIPE DURING CONSTRUCTION.
 8. SANITARY SEWER LATERALS SHALL HAVE MINIMUM SLOPE OF $\frac{1}{8}$ " PER FOOT FOR ALL 6-INCH PIPE.
 9. CONTRACTOR SHALL VERIFY THE TOTAL DRAINAGE FIXTURE UNITS (DFU's) AND PIPE SIZES WITH THE PLUMBING PLANS.
 10. SANITARY SEWER SERVICE SHALL BE PVC (SDR 35).
 11. STORM SEWER SHALL BE ADS N-12 WT IB PIPE OR PRINSCO GOLDFLO WT OR SDR35 PVC OR APPROVED EQUAL.
 12. THE PIPE DIAMETER'S LISTED ARE THE NOMINAL INSIDE DIAMETER.
 13. CONTRACTOR TO COORDINATE W/ ARCH & PLUMBER ON ROOF DRAIN SIZE & LOCATIONS.



NOT FOR CONSTRUCTION - CITY DESIGN REVIEW



RIVER VALLEY ARCHITECTS
ADVANCED ENGINEERING CONCEPTS

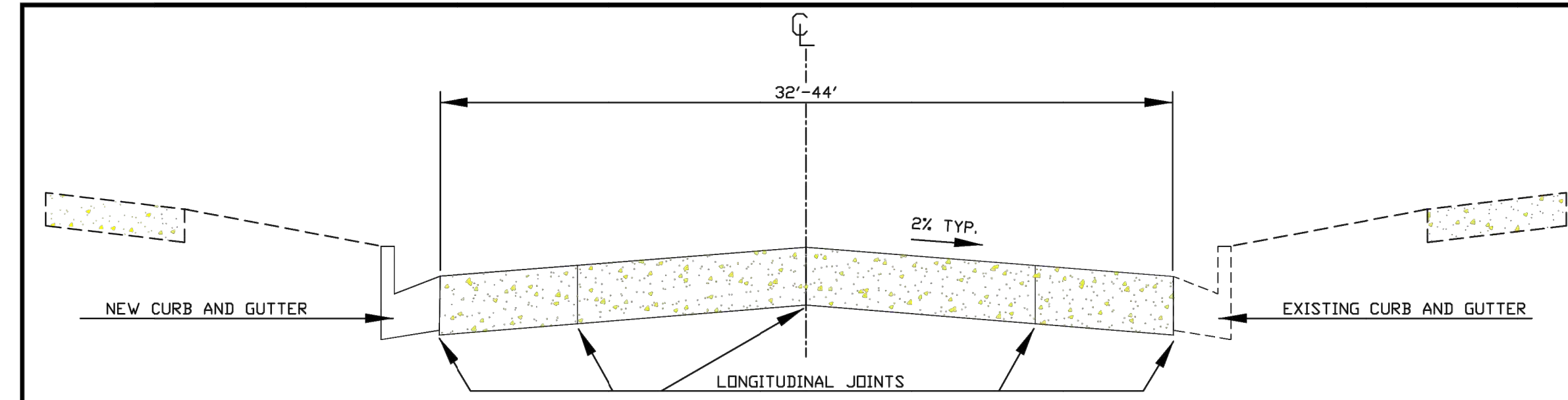
**KWIK TRIP
CLINIC & PHARMACY**
2839 DARLING COURT, LA CROSSE, WI 54601

NO.	DATE	DESCRIPTION

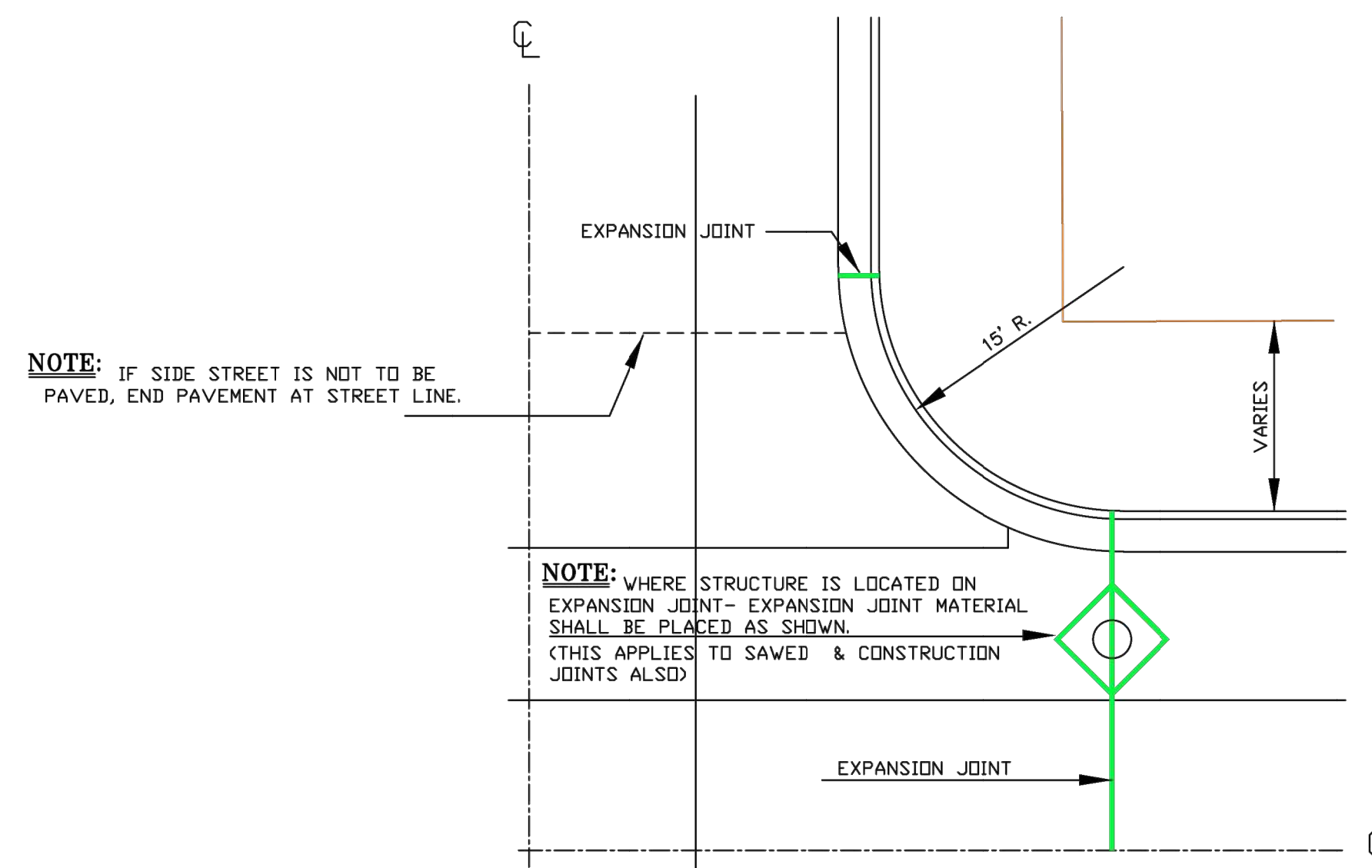
DRAWN BY: JRC
PM: SPB
JOB NO: 25020
DATE: 05.02.2025

UTILITY PLAN

C401

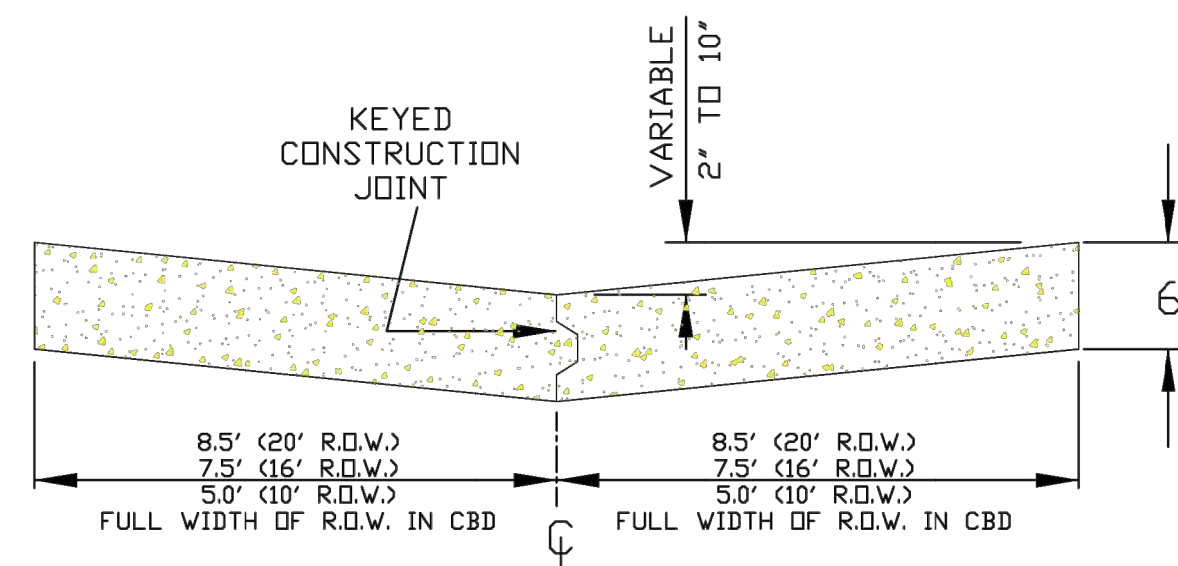


TYPICAL CROSS SECTION FOR 36' ROADWAY

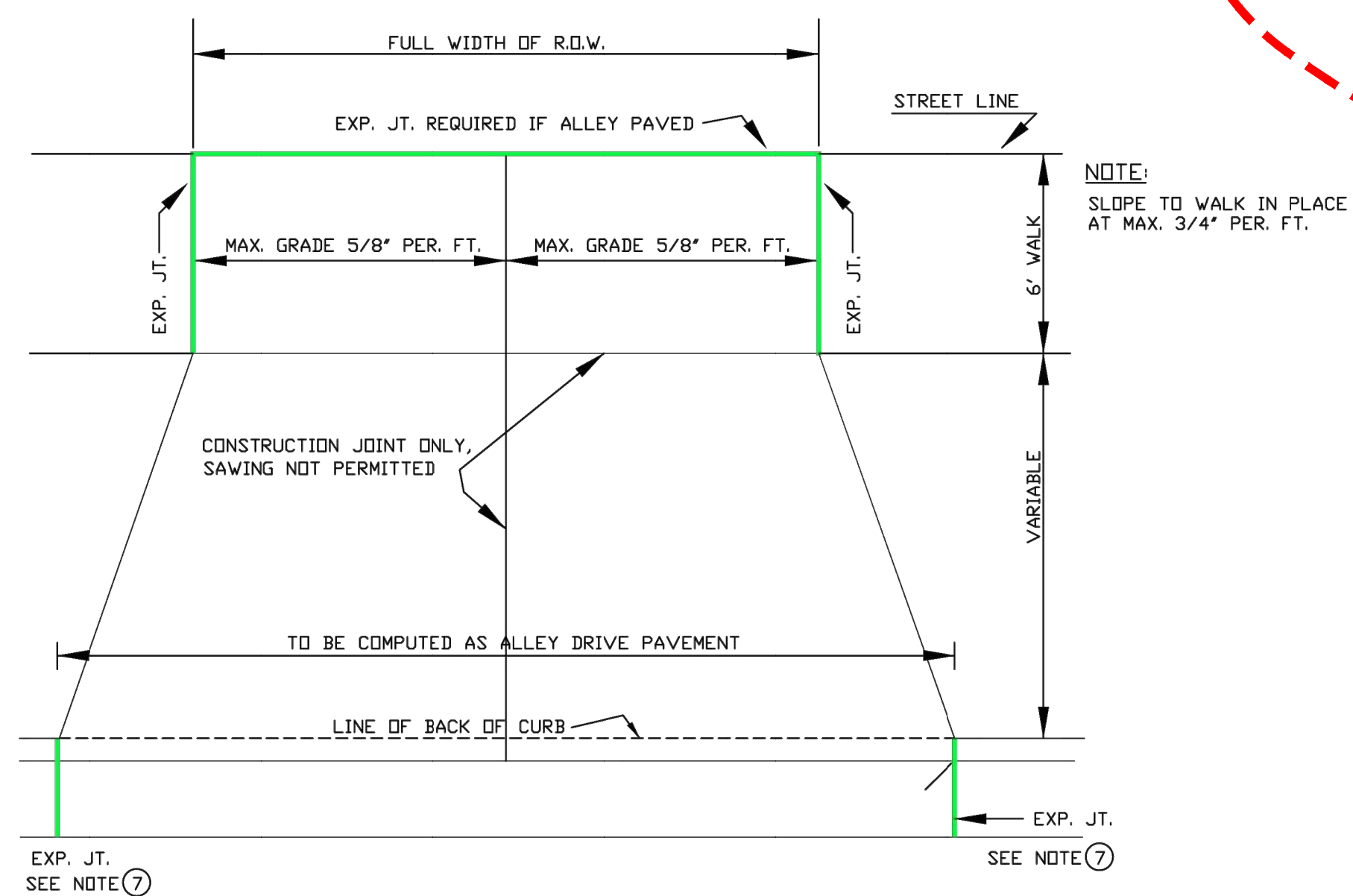


1/4 TYPICAL INTERSECTION

- NOTES-JOINTS**
1. EXPANSION JOINTS SHALL BE PLACED AT THE END OF RADIUS AT STREET INTERSECTIONS AND MID-BLOCK BETWEEN INTERSECTIONS. IN NO CASE SHALL THE DISTANCE BETWEEN EXPANSION JOINTS EXCEED 160 FEET.
 2. THE DISTANCE BETWEEN TRANSVERSE JOINTS SHALL NOT BE LESS THAN 10 FEET AND SHALL BE TYPICALLY 20 FEET APART.
 3. LONGITUDINAL CONSTRUCTION JOINTS BETWEEN CURB AND GUTTER SECTION AND CONC. PAVING SECTION SHALL BE SEALED AS SHOWN ON JOINT DETAILS.

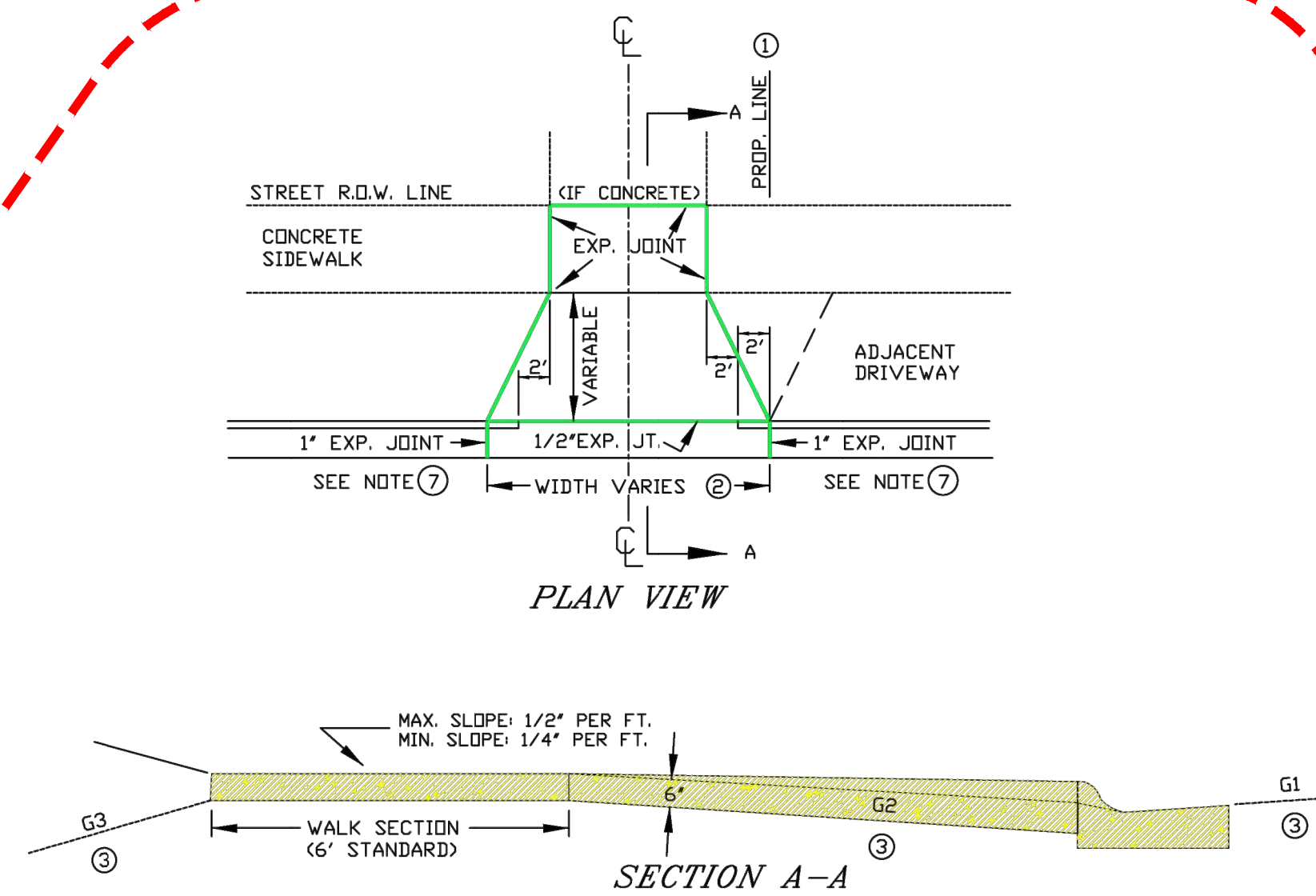


TYPICAL SECTION OF ALLEY PAVEMENT



STANDARD ALLEY DRIVEWAY 7" THICK

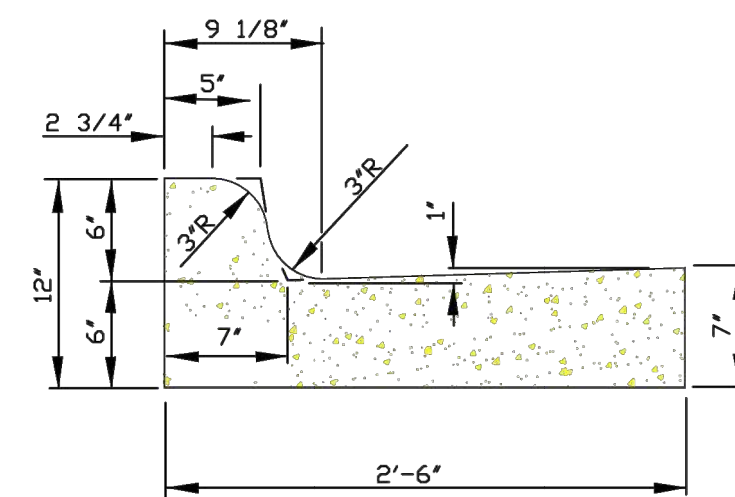
DRAWINGS NOT TO SCALE



- ① DRIVE SECTION SHALL NOT OVERLAP PROPERTY LINE EXTENDED, EXCEPT WHERE PERMITTED BY THE ENGINEER, OR WHEN A JOINT DRIVEWAY AGREEMENT IS EXECUTED BY OWNERS OF ADJACENT PROPERTIES.
- ② MAX. DRIVEWAY WIDTH AT THE CURB AND SIDEWALK IS SET FORTH IN CITY ORDINANCE 5.03.
- ③ THE BREAKOVER ANGLE (CAUSE OF CARS BOTTOMING) BECOMES CRITICAL WHEN THE ALGEBRAIC DIFFERENCE OF GRADES (G1, G2, & G3) EXCEEDS 11%.
- ④ A REINFORCED DRIVE SECTION IS **REQUIRED FOR CURB & GUTTER IN AREAS ZONED INDUSTRIAL OR COMMERCIAL.**
- ⑤ BACK OF CURB TO FRONT OF CONC. SIDEWALK MUST BE CONCRETE, BRICK OR ASPHALTIC BITUMINOUS.
- ⑥ **MECHANICAL COMPACTION OF SUBSOIL IN LAYERS LESS THAN 12" TO ACHIEVE MINIMUM COMPACTION OF 95% OF MAXIMUM DENSITY FROM MODIFIED PROCTOR IS REQUIRED.** (INCLUDING STREET SIDE AFTER FORMS ARE REMOVED)
- ⑦ EXPANSION JOINT IS REQUIRED AT BOTH ENDS OF DRIVEWAY WHEN ONLY DRIVEWAY IS INSTALLED OR REPLACED. WHEN ENTIRE BLOCK OF CURB & GUTTER IS INSTALLED THE EXPANSION JOINT AT DRIVEWAY ENDS MAY BE OMITTED.

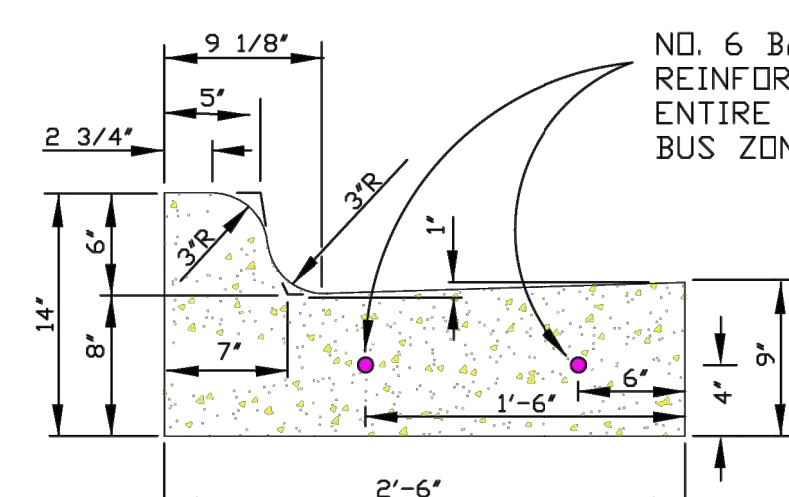
NOTE: TURNING OF 2" DIAMETER DRIVEWAY RETURNS IN LIEU OF DIMINISHING HEAD AS SHOWN IS PERMITTED IF DESIRED BY PROPERTY OWNER. INSTALLATION OF A DRIVEWAY BY REMOVING EXISTING CURB HEAD ONLY IS NOT ALLOWED. ENTIRE EXISTING C&G MUST BE REMOVED FOR NEW DRIVEWAYS. REMOVAL OF A MINIMUM 12" WIDTH OF BITUMINOUS TO INSTALL FRONT FORMS IS REQUIRED.

STANDARD DRIVEWAY DETAIL

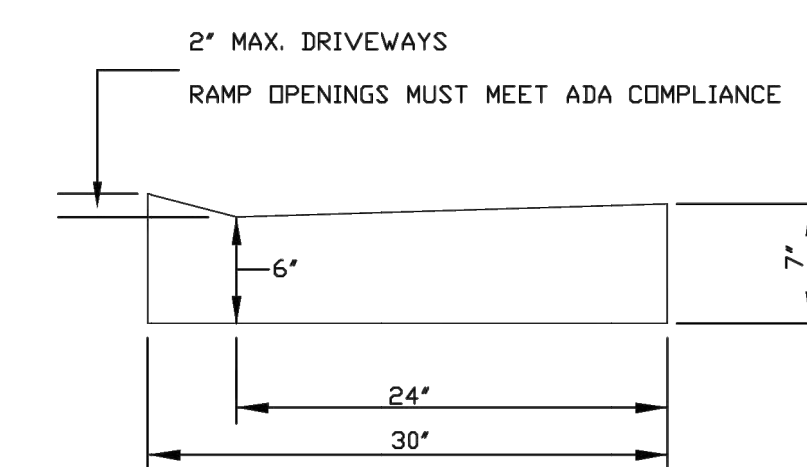


STANDARD CURB & GUTTER SECTION

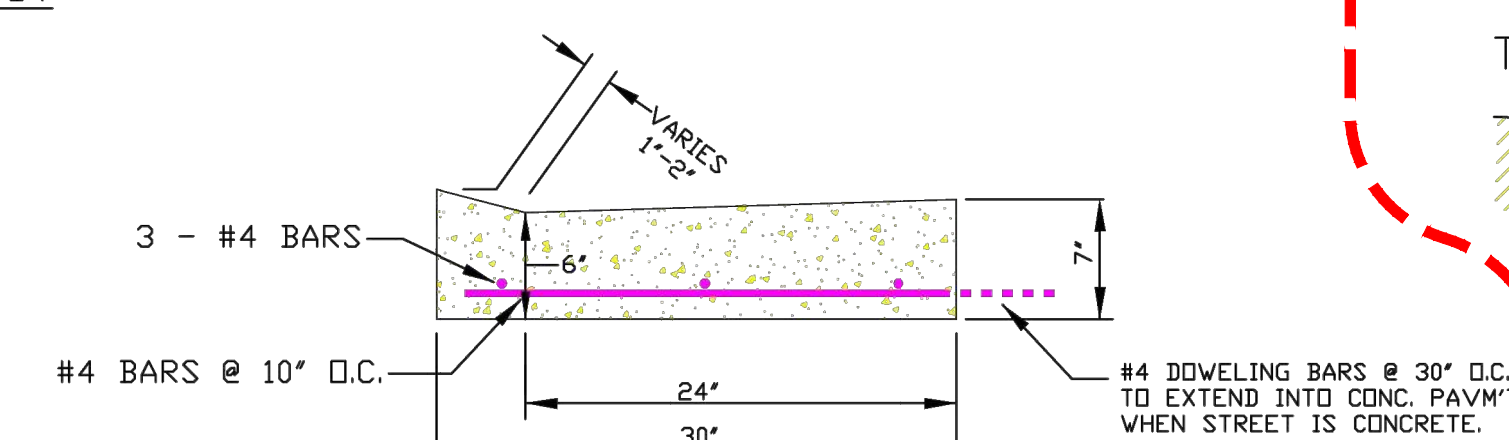
NOTE: WITH REFERENCE TO SAWING OF CONTRACTION JOINTS ON SLIP FORM CURB & GUTTER, & CURB, PAGE 9.3, STANDARD SPECS THE SAW CUT SHALL BE A MINIMUM 1/8" WIDE X 1" DEEP.



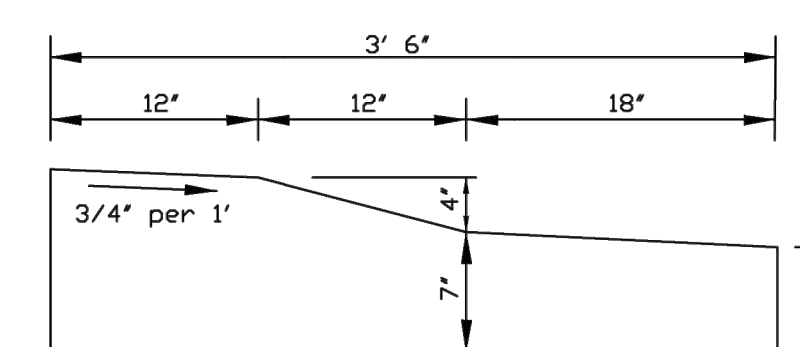
REINFORCED CURB & GUTTER BUS STOP LOCATIONS



MOUNTABLE CURB SECTION

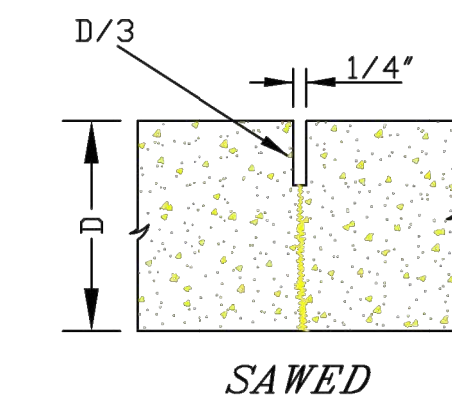


REINFORCED DRIVEWAY

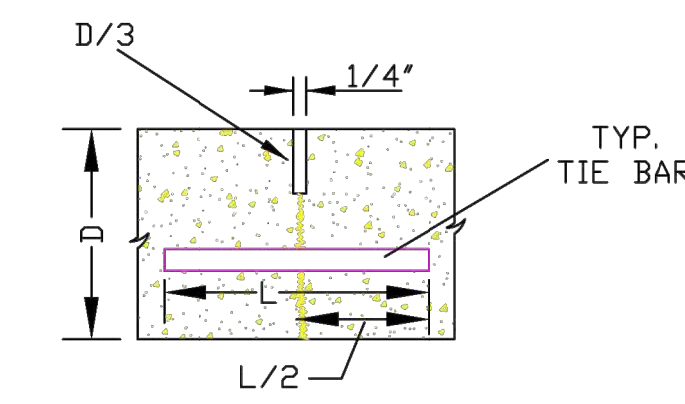


TRAFFIC CIRCLE CURB SECTION

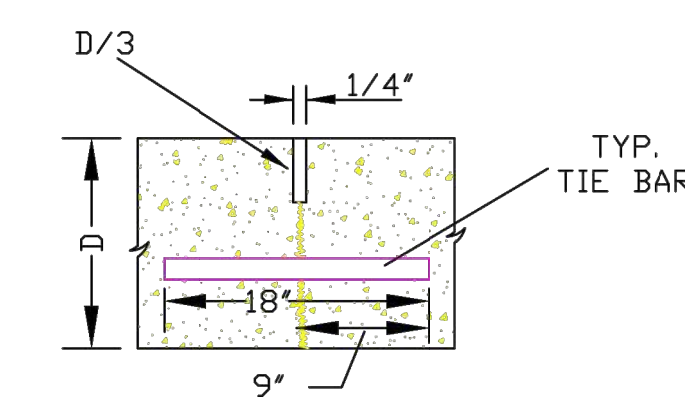
CONTRACTION



SAWED

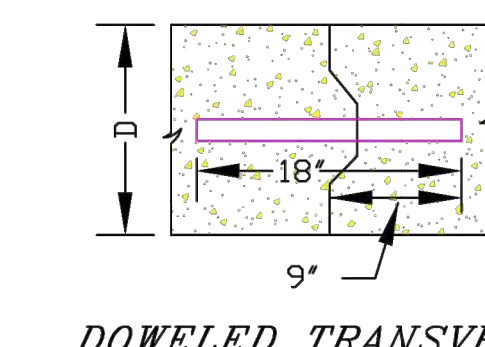


TIED LONGITUDINAL

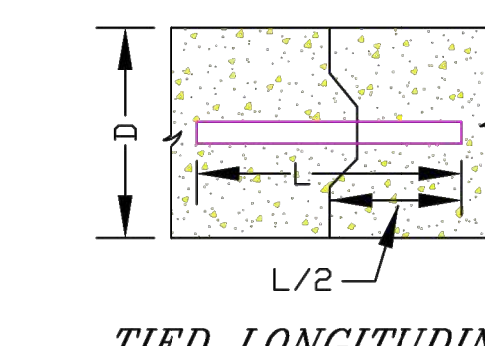


DOWELED TRANSVERSE

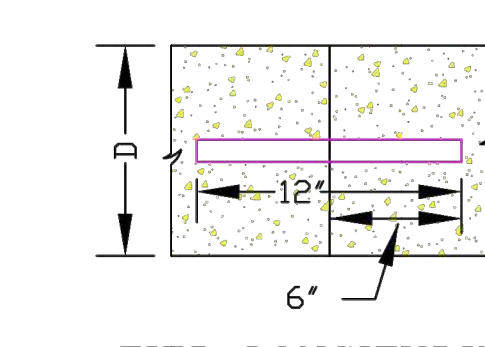
CONSTRUCTION



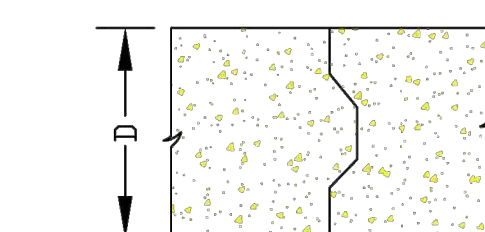
DOWELED TRANSVERSE



TIED LONGITUDINAL

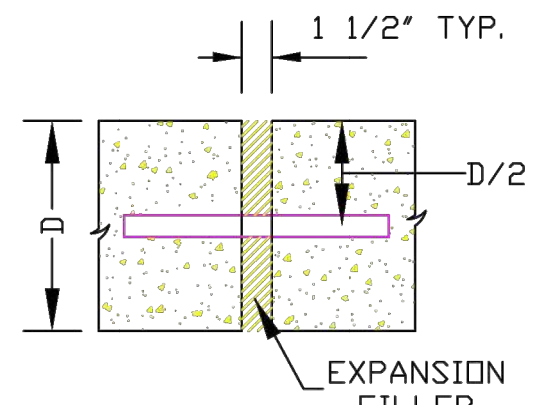


TIED LONGITUDINAL



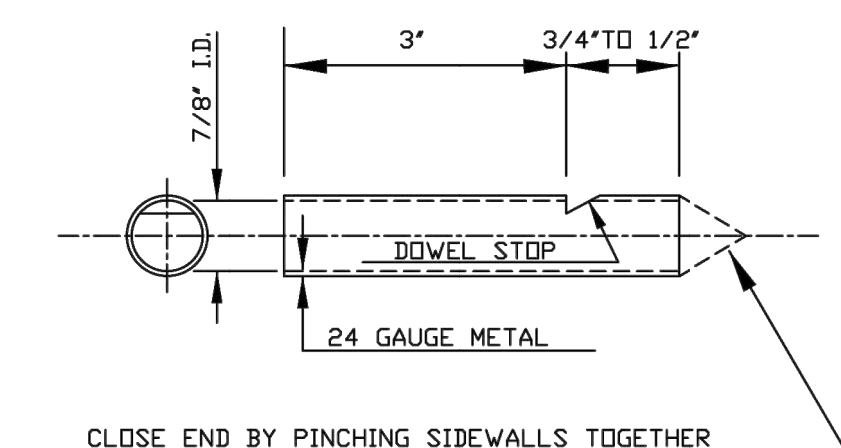
UNTIED

EXPANSION

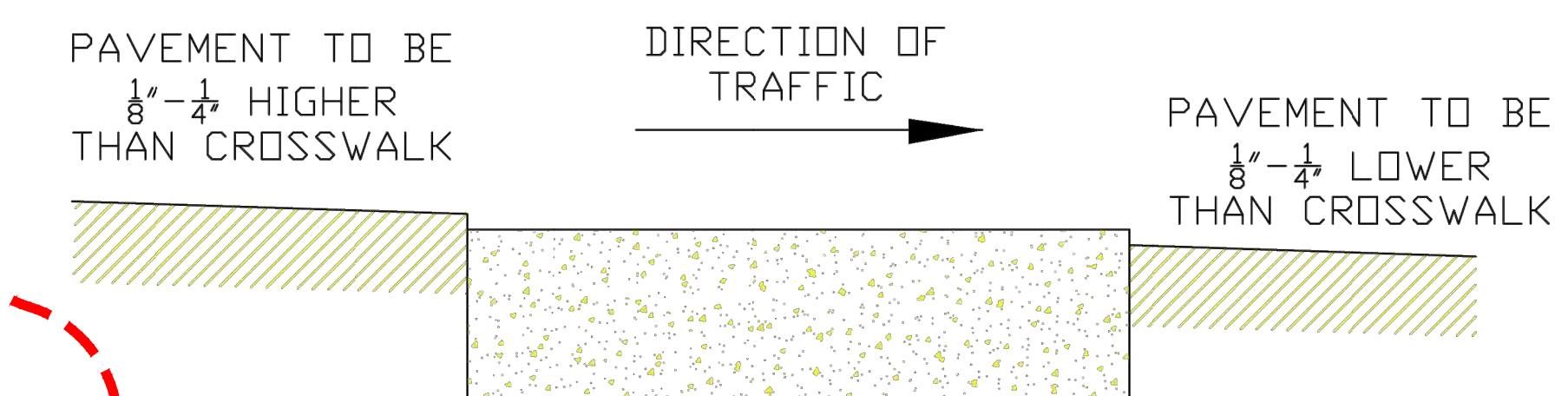


DOWELED TRANSVERSE

ALL JOINTS TO BE SEALED TO KEEP OUT FOREIGN DEBRIS



DOWEL SOCKET DETAIL



CONCRETE CROSSWALK DETAIL

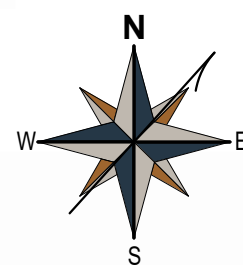
PROJECT No.		CONCRETE-PAVEMENT DETAILS	
LOCATION		DATE	
RESOLUTION		DATE	
ENGINEERING DEPT. City of LaCrosse, Wis.			
FIELD NO.	SURVEYOR	BY	DATE
BOOK	DRAWN	PRELIMINARY	
NUMBER	CHECKED	FINAL	
	APPROVED		
	REVISIONS		01/21
SCALE: NONE		TOTAL SHEETS	
SHEET NO.			

D-1-1 Concrete-C&G.dwg

D-1-1 CONCRETE-C&G 2021

NOT FOR CONSTRUCTION - CITY DESIGN REVIEW





RV
RIVER VALLEY ARCHITECTS

**KWIK TRIP
CLINIC & PHARMACY**
2839 DARLING COURT, LA CROSSE, WI 54601

AS101



5/5/2025 3:50:10 PM Autodesk Docs/25-029 KT Clinic & Pharmacy Addition LAX/25-029-KT Clinic & Pharmacy LAX_ CLOUD.rvt

