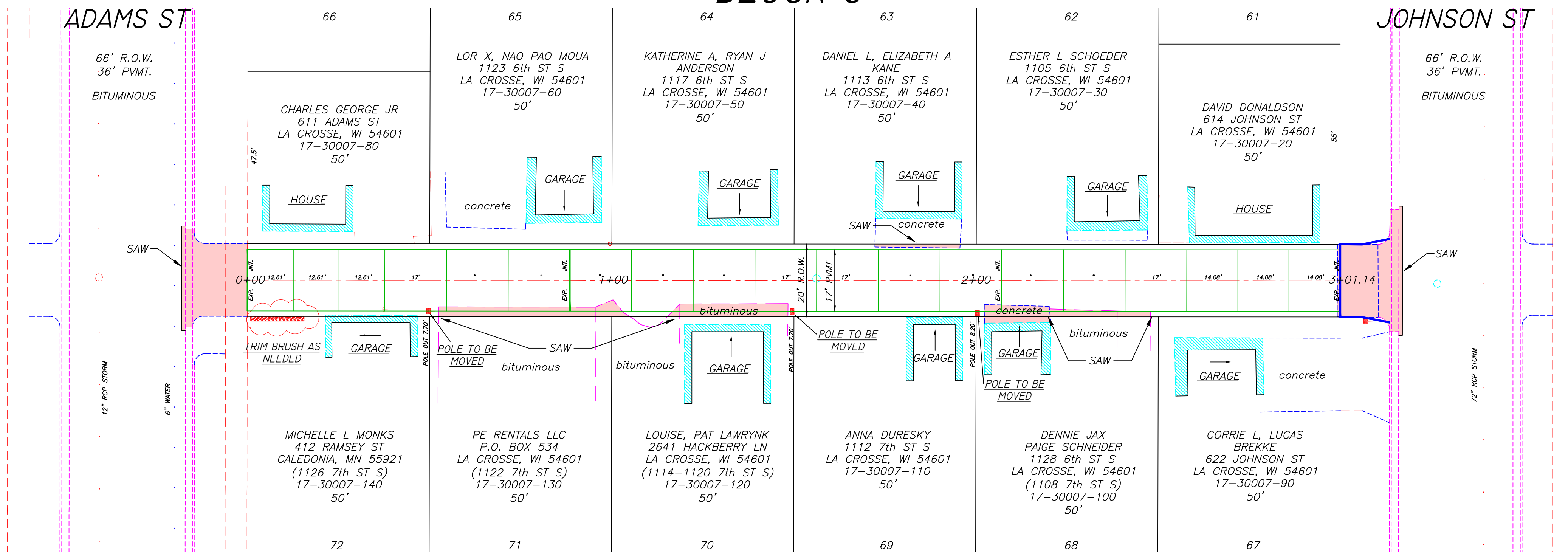


SCALE: 1"=20' H
1"= 2' V
ELEVATIONS SHOWN ARE
NAVD 88

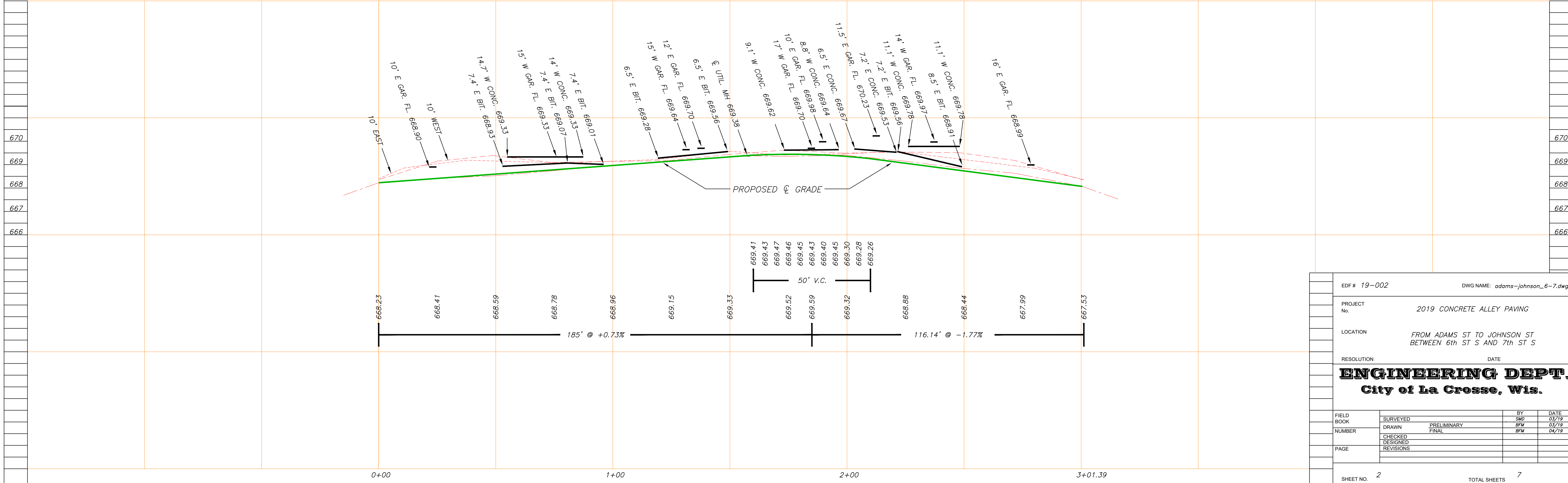
E.S. SMITH'S ADDN. BLOCK 6



QUANTITIES	
570 SQ. YD.	6" CONCRETE ALLEY PAVEMENT
614 SQ. FT.	7" CONCRETE ALLEY APPROACH
92 SQ. FT.	6" CONCRETE D/W
60 LIN. FT.	STD. C&G W/ 6" CRUSHED BASE
64 SQ. FT.	3" BIT. PVMT. INCL. 6" CR. BASE
121 SQ. FT.	2" BIT. PVMT. INCL. 6" CR. BASE
1	LS. EROSION CONTROL
1	LS. TRAFFIC CONTROL
REMOVAL	
709 SQ. FT.	CONCRETE (ANY DEPTH)
362 SQ. FT.	BITUMINOUS (ANY DEPTH)
60	LIN. FT. C&G
51	LIN. FT. CONCRETE SAWING
167	LIN. FT. BITUMINOUS SAWING

BENCHMARKS	
TOP NUT OF HYDRANTS	
6th ST S & ADAMS ST	671.34
7th ST S & ADAMS ST	672.07
6th ST S & JOHNSON ST	671.86
7th ST S & JOHNSON ST	671.42

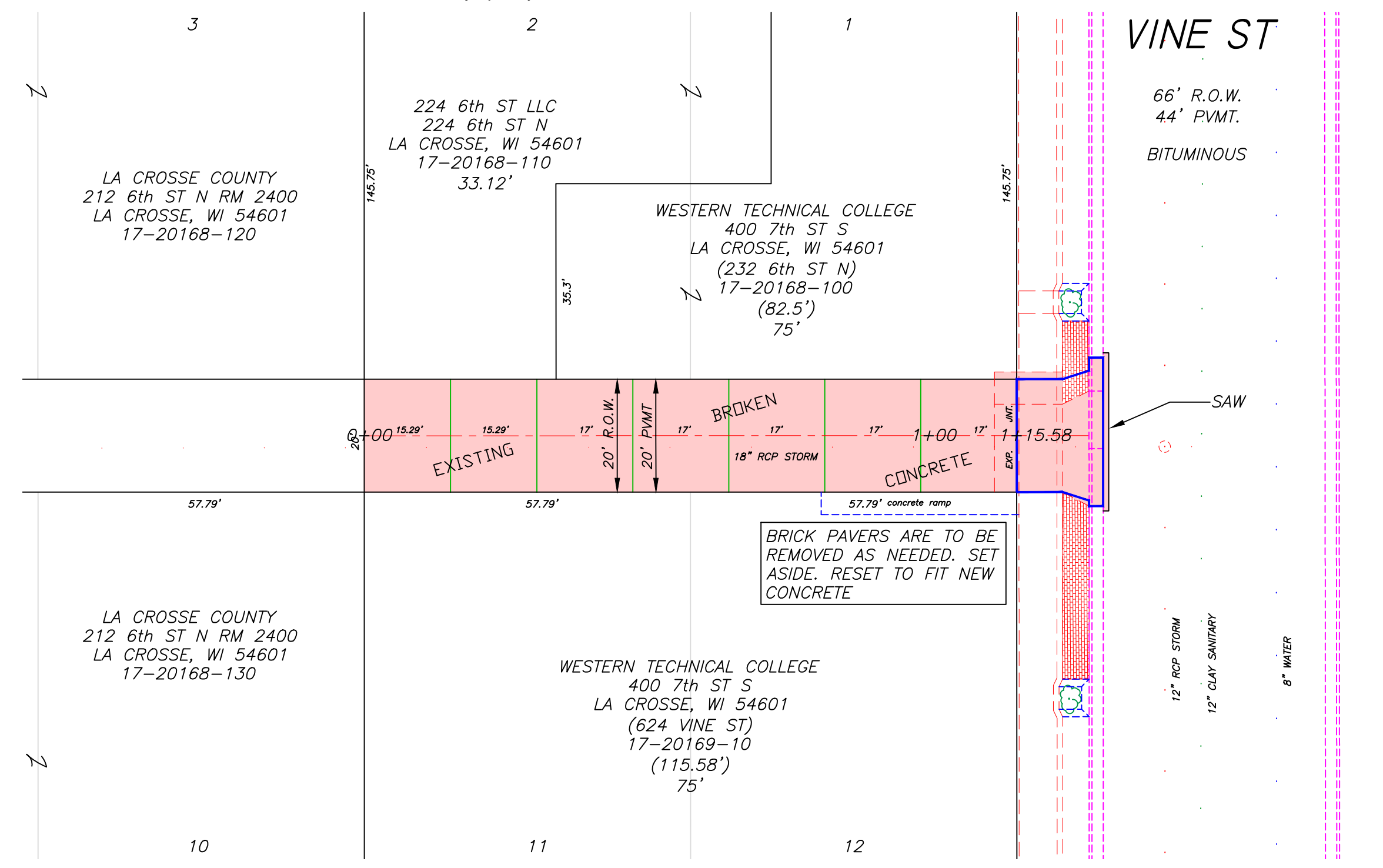
NOTE
CONTRACTOR IS TO VERIFY LOCATION OF ALL UTILITIES
PRIOR TO ANY CONSTRUCTION



EDF # 19-002		DWG NAME: adams-johnson_6-7.dwg	
PROJECT No.	2019 CONCRETE ALLEY PAVING		
LOCATION	FROM ADAMS ST TO JOHNSON ST BETWEEN 6th ST S AND 7th ST S		
RESOLUTION	DATE		
ENGINEERING DEPT. City of La Crosse, Wis.			
FIELD BOOK	SURVEYED	BY	DATE
NUMBER	DRAWN	PRELIMINARY	SMW 03/19
PAGE	CHECKED	FINAL	RFW 03/19
	DESIGNED		
	REVISIONS		
SHEET NO. 2	TOTAL SHEETS 7		

BURN'S, FARNAM & BURN'S ADDN. BLK 7

SCALE: 1"=20' H
1"= 2' V
ELEVATIONS SHOWN ARE
NAVD 88



QUANTITIES

- 257 SQ. YD. 6" CONCRETE ALLEY PAVEMENT
- 264 SQ. FT. 7" CONCRETE ALLEY APPROACH
- 26 LIN. FT. STD. C&G W/ 6" CRUSHED BASE
- 28 SQ. FT. 3" BIT. PVMT. INCL. 6" CR. BASE
- 10 SQ. FT. BRICK PAVER REPLACEMENT
- 1 L.S. EROSION CONTROL
- 1 L.S. TRAFFIC CONTROL

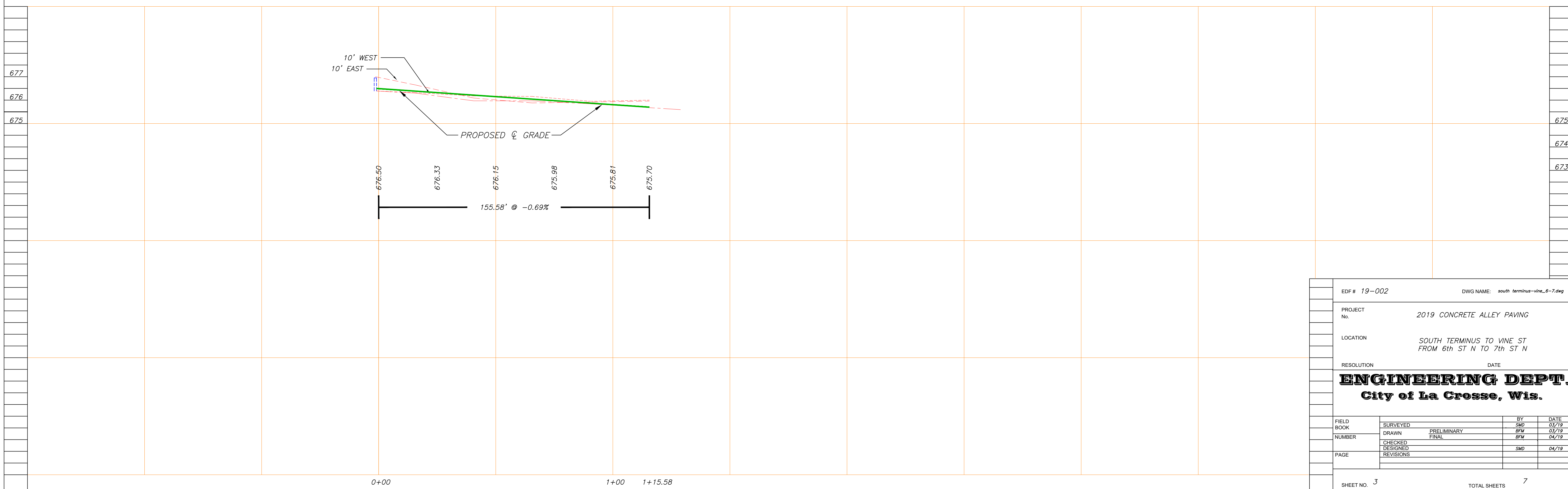
REMOVAL

- 2600 SQ. FT. CONCRETE (ANY DEPTH)
- 26 LIN. FT. C&G
- 28 SQ. FT. BITUMINOUS (ANY DEPTH)
- 30 LIN. FT. BITUMINOUS SAWING
- 27 SQ. FT. BRICK PAVER (SAVE FOR REPLACEMENT)

NOTE
CONTRACTOR IS TO VERIFY LOCATION OF ALL UTILITIES PRIOR TO ANY CONSTRUCTION

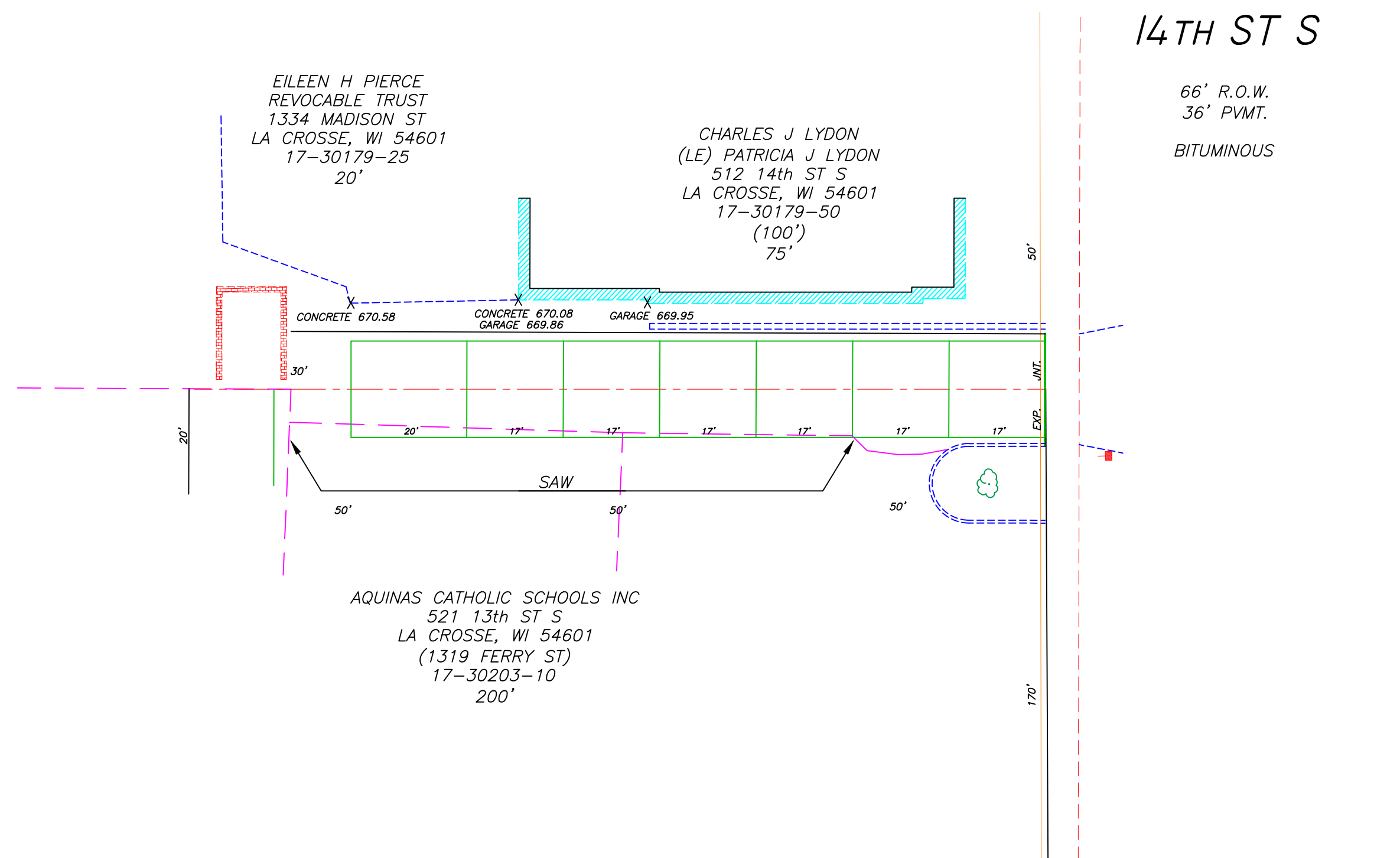
BENCHMARKS
TOP NUT OF HYDRANTS

6th ST N & VINE ST	677.48
7th ST N & VINE ST	677.54



EDF # 19-002		DWG NAME: south terminus-vine_6-7.dwg	
PROJECT No.	2019 CONCRETE ALLEY PAVING		
LOCATION	SOUTH TERMINUS TO VINE ST FROM 6th ST N TO 7th ST N		
RESOLUTION	DATE		
ENGINEERING DEPT. City of La Crosse, Wis.			
FIELD BOOK	SURVEYED	BY	DATE
NUMBER	DRAWN	PRELIMINARY	SMD 03/19
	CHECKED	FINAL	RFW 04/19
	DESIGNED		
	REVISIONS	SMD	04/19
PAGE			
SHEET NO. 3	TOTAL SHEETS 7		

RUBLEE AND GILLETTE'S ADDN.



SCALE: 1"=20' H
1"= 2' V
ELEVATIONS SHOWN ARE
NAVD 88

QUANTITIES

231 SQ. YD. 6" CONC. ALLEY PVMT.
35 SQ. FT. 3" BIT. PAVEMENT W/ 6" CRUSHED BASE
245 SQ. FT. 2" BIT. PAVEMENT W/ 4" CRUSHED BASE
1 L.S. EROSION CONTROL
1 L.S. TRAFFIC CONTROL

REMOVALS

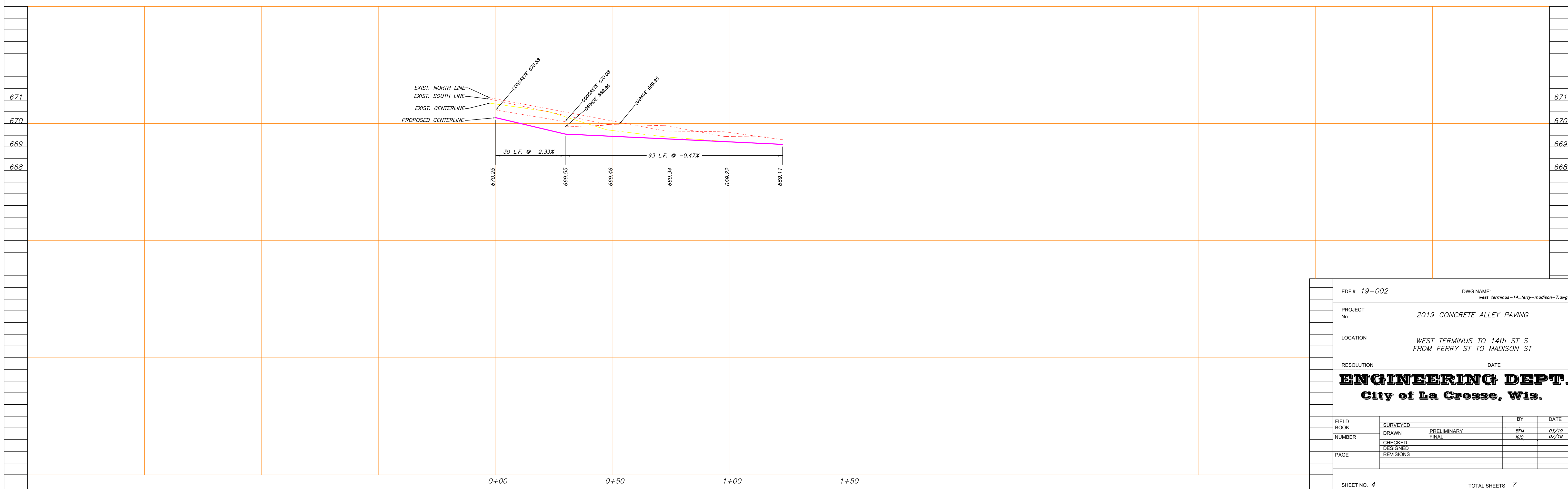
335 SQ. FT. CONCRETE REMOVAL (ANY DEPTH)
6 LIN. FT. CONCRETE SAWING
205 LIN. FT. BIT. SAWING

SUBD. OF BLK. 2
RUBLEE AND OBER'S SUBD.

NOTE
CONTRACTOR IS TO VERIFY LOCATION OF ALL UTILITIES
PRIOR TO ANY CONSTRUCTION

BENCHMARKS
TOP NUT OF HYDRANT

14th ST & FERRY ST	672.80
14th ST & MADISON ST	672.12



EDF # 19-002	DWG NAME: west_terminus-14_ferry-madison-2.dwg		
PROJECT No. 2019 CONCRETE ALLEY PAVING			
LOCATION WEST TERMINUS TO 14th ST S FROM FERRY ST TO MADISON ST			
RESOLUTION	DATE		
ENGINEERING DEPT. City of La Crosse, Wis.			
FIELD BOOK	SURVEYED	BY	DATE
NUMBER	DRAWN PRELIMINARY CHECKED FINAL	BFM KSC	07/19 07/19
PAGE	DESIGNED REVISIONS		
SHEET NO. 4		TOTAL SHEETS 7	