

EROSION CONTROL LEGEND

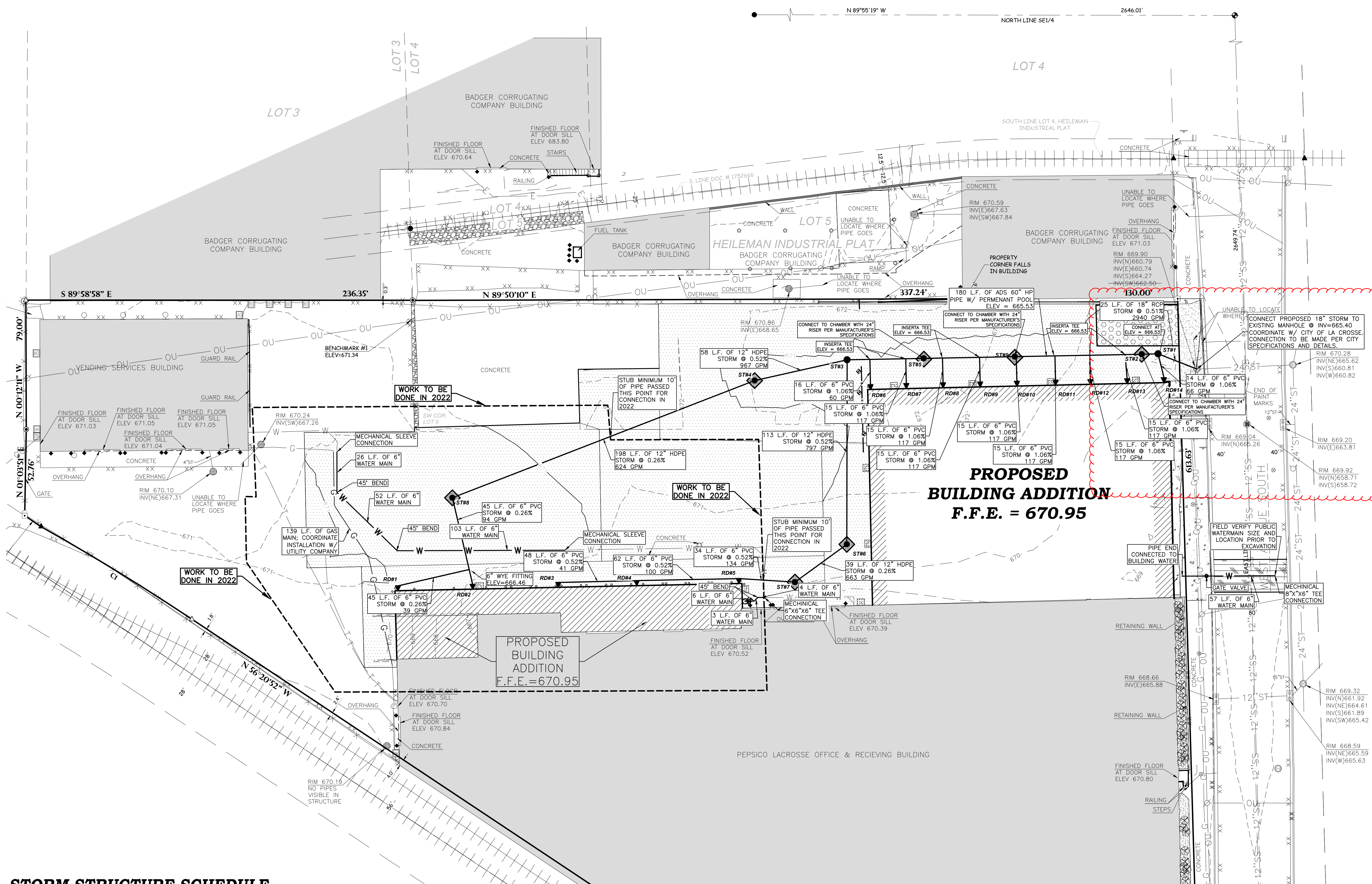
EXISTING CONTOUR	— 888 —
PROPOSED CONTOUR	— 888 —
PROPOSED INLET PROTECTION	7 C500
ROCK CONSTRUCTION ENTRANCE	10 C500

EROSION CONTROL SEQUENCING

- INSTALL PERIMETER EROSION CONTROL
- BEGIN DEMOLITION
- BEGIN ROUGH GRADING AND UTILITY INSTALLATION
- DURING GRADING ACTIVITIES EXISTING GRASS AND VEGETATION, TO BE REMOVED, SHALL REMAIN IN PLACE FOR AS LONG AS POSSIBLE, TO AVOID SEDIMENT TRANSPORT.
- TEMPORARY STABILIZATION ACTIVITY SHALL COMMENCE WHEN LAND DISTURBING CONSTRUCTION ACTIVITIES HAVE TEMPORARILY CEASED AND WILL NOT RESUME FOR A PERIOD EXCEEDING 14 CALENDAR DAYS.
- FINAL STABILIZATION ACTIVITY SHALL COMMENCE WHEN LAND DISTURBING ACTIVITIES CEASE AND FINAL GRADE HAS BEEN REACHED ON ANY PORTION OF THE SITE.
- IF DISTURBED AREAS MUST BE LEFT OVER WINTER, AN ANIONIC POLYACRYLAMIDE SHALL BE APPLIED TO ALL DISTURBED AREAS PRIOR TO GROUND FREEZE. SEE SPECIFICATIONS FOR DETAILS.

UTILITY LEGEND

PROPOSED STORM SEWER	X"ST
PROPOSED WATER MAIN	X"W
PROPOSED STORM SEWER MANHOLE	9 C500
PROPOSED STORM SEWER DRAIN	13 C500
SALVAGED HYDRANT/VALVE ASSEMBLY	7 C500
ROOF DRAIN CONNECTION	14 C500
PROPOSED WATER MAIN VALVE	



STORM STRUCTURE SCHEDULE

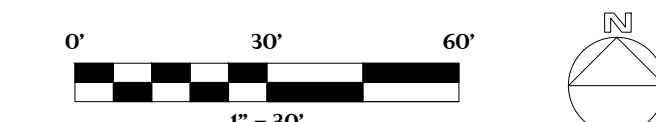
ST#1	ST#2	ST#3	ST#4	ST#5	ST#6
RIM 670.18 INV. W 662.53 INV. S 665.53 DEPTH 8.27	RIM 670.18 24" RISER W/ NEENAH R-1670 CASTING W/ GRATE TYPE D	RIM 670.94 INV. E 662.53 INV. W 665.25 DEPTH 8.41	RIM 670.54 INV. E 665.83 INV. W 2.00 DEPTH 5.01	RIM 670.62 24" RISER W/ NEENAH R-1670 CASTING W/ GRATE TYPE D	RIM 670.50 INV. SW 666.09 INV. N 666.12 SUMP 2.00 DEPTH 6.41
84" I.D. PRECAST MANHOLE W/ NEENAH R-1670 CASTING W/ SOLID COVER		84" I.D. PRECAST MANHOLE W/ NEENAH R-1670 CASTING W/ SOLID COVER	48" I.D. PRECAST MANHOLE W/ NEENAH R-1670 CASTING W/ GRATE TYPE D		48" I.D. PRECAST MANHOLE W/ NEENAH R-1670 CASTING W/ GRATE TYPE D
ST#7	ST#8	ST#9	RD #1	RD #2	RD #3
RIM 670.19 INV. W 666.58 INV. NE 666.19 SUMP 2.00 DEPTH 6.00	RIM 670.14 INV. E 666.34 INV. S 666.34 SUMP 2.00 DEPTH 5.80	RIM 670.64 24" RISER W/ NEENAH R-1670 CASTING W/ GRATE TYPE D	RIM 670.94 INV.* 666.48 * NOTE: INVERT ELEVATION SHOWN AT 90' BEND/VERTICAL RISER	RIM 670.93 INV.* 666.58 * NOTE: INVERT ELEVATION SHOWN AT 90' BEND/VERTICAL RISER	RIM 670.94 INV.* 667.33 * NOTE: INVERT ELEVATION SHOWN AT 90' BEND/VERTICAL RISER
48" I.D. PRECAST MANHOLE W/ NEENAH R-1670 CASTING W/ GRATE TYPE D	48" I.D. PRECAST MANHOLE W/ NEENAH R-1670 CASTING W/ GRATE TYPE D				
RD #4	RD #5	RD #6	RD #7	RD #8	RD #9
RIM 670.92 INV.* 666.08 * NOTE: INVERT ELEVATION SHOWN AT 90' BEND/VERTICAL RISER	RIM 670.88 INV.* 666.76 * NOTE: INVERT ELEVATION SHOWN AT 90' BEND/VERTICAL RISER	RIM 670.93 INV.* 666.70 * NOTE: INVERT ELEVATION SHOWN AT 90' BEND/VERTICAL RISER	RIM 670.92 INV.* 666.68 * NOTE: INVERT ELEVATION SHOWN AT 90' BEND/VERTICAL RISER	RIM 670.90 INV.* 666.68 * NOTE: INVERT ELEVATION SHOWN AT 90' BEND/VERTICAL RISER	RIM 670.92 INV.* 666.68 * NOTE: INVERT ELEVATION SHOWN AT 90' BEND/VERTICAL RISER
RD #10	RD #11	RD #12	RD #13	RD #14	
RIM 670.88 INV.* 666.58 * NOTE: INVERT ELEVATION SHOWN AT 90' BEND/VERTICAL RISER	RIM 670.92 INV.* 666.58 * NOTE: INVERT ELEVATION SHOWN AT 90' BEND/VERTICAL RISER	RIM 670.93 INV.* 666.58 * NOTE: INVERT ELEVATION SHOWN AT 90' BEND/VERTICAL RISER	RIM 670.93 INV.* 666.58 * NOTE: INVERT ELEVATION SHOWN AT 90' BEND/VERTICAL RISER	RIM 670.84 INV.* 666.58 * NOTE: INVERT ELEVATION SHOWN AT 90' BEND/VERTICAL RISER	

GENERAL NOTES:

- CONTACT DIGGER'S HOTLINE 5 WORKING DAYS PRIOR TO THE START OF CONSTRUCTION.
- GRADE, LINE, AND LEVEL SHALL BE REVIEWED IN THE FIELD BY THE CONSTRUCTION MANAGER.
- ANY EXISTING UTILITIES NOT SHOWN ON THIS DOCUMENT WHICH NEED TO BE REMOVED, RELOCATED AND OR ADJUSTED SHALL BE THE RESPONSIBILITY OF THE SITE GRADING CONTRACTOR.
- COORDINATE ALL UTILITY WORK WITH THE RESPECTIVE TRADES RESPONSIBLE FOR THE INSTALLATION OF GAS, CABLE, TELEPHONE AND ELECTRICAL (INCLUDING MAIN SERVICE, SITE LIGHTING, CONDUITS AND SIGNAGE).
- COORDINATE ALL WORK WITHIN THE PUBLIC RIGHT OF WAY WITH THE LOCAL MUNICIPALITY.
- ALL TESTING AND INSPECTION SHALL BE DONE IN ACCORDANCE WITH SPS 382.21.
- THE PROPOSED WATER MAIN SHALL HAVE A MINIMUM COVER OF 7'-6" TO THE TOP OF PIPE FROM PROPOSED FINISHED GRADE. SEE SHEET C300 FOR PROPOSED FINISHED GRADE.
- THE MUNICIPALITY SHALL BE CONTACTED PRIOR TO ANY EXCAVATION IN THE PUBLIC RIGHT-OF-WAY, AND PRIOR TO CONNECTING SANITARY SEWER AND WATER LATERALS TO THE PUBLIC MAINS.
- THE CONTRACTOR SHALL HAVE A TRAFFIC CONTROL PLAN APPROVED PRIOR TO WORK COMMENCING.
- THE MUNICIPALITY SHALL OPERATE ALL EXISTING WATER VALVES, IF NEEDED.
- THRUST BLOCKING SHALL BE PLACED AT ALL BENDS AND CONNECTIONS TO VALVES AND HYDRANTS ON WATER MAIN.
- NOTIFY THE LOCAL MUNICIPALITY AT LEAST 2 WORKING DAYS PRIOR TO THE START OF SOIL DISTURBING ACTIVITIES.
- INSTALL ALL TEMPORARY EROSION CONTROL ELEMENTS PRIOR TO THE START OF DEMOLITION/CONSTRUCTION.
- ALL ACTIVITIES SHALL BE CONDUCTED IN A LOGICAL SEQUENCE TO MINIMIZE THE AMOUNT OF BARE SOIL EXPOSED AT ANY ONE TIME. MAINTAIN EXISTING VEGETATION AS LONG AS POSSIBLE.
- CRUSHED ROCK DRIVES FOR SEDIMENT TRACKING UTILIZING 3" CRUSHED ROCK SHALL BE MAINTAINED AT ALL CONSTRUCTION ENTRANCES TO THE SITE. THE ROCK DRIVE SHALL BE A MINIMUM OF 12" THICK AND BE A MINIMUM OF 50 FEET IN LENGTH BY THE WIDTH OF THE DRIVEWAY.
- OFF SITE SEDIMENT DEPOSITS OCCURRING AS A RESULT OF A STORM EVENT SHALL BE CLEANED UP BY THE END OF THE NEXT WORK DAY. ALL OFF SITE SEDIMENT DEPOSITS OCCURRING AS A RESULT OF CONSTRUCTION ACTIVITIES, INCLUDING SOIL TRACKED BY CONSTRUCTION TRAFFIC, SHALL AT A MINIMUM BE CLEANED BY THE END OF EACH WORK DAY. EXCESSIVE AMOUNTS OF SEDIMENT OR OTHER DEBRIS TRACKED ON ADJACENT STREETS SHALL BE CLEANED BY THE END OF EACH WORK DAY. EXCESSIVE AMOUNTS OF SEDIMENT OR OTHER DEBRIS TRACKED ON ADJACENT STREETS SHALL BE CLEANED IMMEDIATELY. FINE SEDIMENT ACCUMULATIONS SHALL BE CLEANED FROM ADJACENT STREETS BY THE USE OF MECHANICAL OR MANUAL SWEEPING OPERATIONS ONCE A WEEK AT A MINIMUM AND BEFORE IMMINENT RAIN EVENTS.
- DISTURBED GROUND OUTSIDE OF THE EVERYDAY CONSTRUCTION AREAS, INCLUDING SOIL STOCKPILES, THAT ARE LEFT INACTIVE FOR MORE THAN 7 DAYS SHALL BE TEMPORARILY STABILIZED BY SEEDING/MULCHING OR OTHER APPROVED METHODS.
- WASTE MATERIAL THAT IS GENERATED ON THE CONSTRUCTION SITE SHALL BE PROPERLY DISPOSED OF AND NOT ALLOWED TO RUN INTO RECEIVING WATERS.
- EROSION CONTROL DEVICES DESTROYED AS A RESULT OF CONSTRUCTION ACTIVITIES SHALL BE REPAIRED BY THE END OF EACH WORK DAY.
- INSPECT ALL EROSION CONTROL MEASURES AT LEAST ONCE A WEEK AND AFTER ANY RAINFALL OF 0.5" OR MORE. MAKE NEEDED REPAIRS AND DOCUMENT ALL ACTIVITIES AS PER THE REQUIREMENTS OF THE NOTICE OF INTENT SUBMITTED BY THE PROJECT CIVIL ENGINEER.
- ALL TEMPORARY EROSION CONTROL ELEMENTS SHALL REMAIN IN PLACE UNTIL A SUFFICIENT GROWTH OF VEGETATION IS ESTABLISHED AND THEN BE REMOVED AS PART OF THE BASE BID.
- IF SEDIMENT LADEN WATER NEEDS TO BE REMOVED FROM THE SITE, FILTER BAGS OR SCREENING SHALL BE USED IN ACCORDANCE WITH WI DNR TECHNICAL STANDARD 1061 TO PREVENT SEDIMENT DISCHARGE TO THE MAXIMUM EXTENT PRACTICABLE.
- IF BARE SOIL IS EXPOSED DURING THE WINTER MONTHS, STABILIZATION BY MULCHING OR ANIONIC POLYACRYLAMIDE SHALL OCCUR PRIOR TO SNOWFALL OR GROUND FREEZE.
- THE CONTRACTOR SHALL PERFORM INSPECTIONS AND MONITORING OF EROSION CONTROL PRACTICES IN ACCORDANCE WITH THE WI DNR "CONSTRUCTION SITE INSPECTION REPORT" FORM 3400-187. THIS FORM CAN BE FOUND IN THE CONSTRUCTION SPECIFICATIONS.

UTILITY DISCLAIMER:

THE LOCATIONS, SIZES, AND TYPES OF UNDERGROUND PUBLIC AND PRIVATE UTILITIES OR SUBSTRUCTURES SHOWN HEREON WERE OBTAINED FROM VISUAL INSPECTION, FIELD MEASUREMENTS, AND/OR AS-BUILT PLANS, SANITARY SEWER AND STORM SEWER PIPE SIZES, INVERTS, DIRECTION, AND LOCATION BETWEEN MANHOLES ARE SUPPLEMENTED BY AS-BUILT PLANS AND/OR ESTIMATED BASED ON FIELD OBSERVATIONS. PRIOR TO CONSTRUCTION IN THE VICINITY OF ANY UTILITIES SHOWN HEREON, IT IS RECOMMENDED THAT THE LOCATIONS, DEPTHS, AND SIZES BE FIELD VERIFIED. THE LOCATIONS SHOWN HEREON ARE ONLY APPROXIMATE, WITH POSSIBILITY THAT ADDITIONAL UTILITY LINES NOT DISCOVERED, OR MARKED, DURING THE SEARCH OF RECORDS AND THE FIELD SURVEY MAY EXIST. ANY CONTRACTOR USING THE INFORMATION SHOWN HEREON IS HEREBY FOREWARNED THAT ANY EXCAVATION UPON THIS SITE MAY RESULT IN THE DISCOVERY OF ADDITIONAL UNDERGROUND UTILITIES NOT SHOWN HEREON. IN GENERAL, UNDERGROUND UTILITY LOCATIONS ARE SHOWN FROM UTILITY MARKINGS, BY OTHERS, AND/OR AS-BUILT PLANS PROVIDED BY OTHERS. POINT OF BEGINNING MAKES NO WARRANTY OF ANY KIND, EXPRESS OR IMPLIED, WITH RESPECT TO THE EXISTING UTILITIES SHOWN HEREON AND BELIEVES THAT THE INFORMATION CONTAINED HEREIN IS RELIABLE AND GENERALLY ACCURATE FOR THE PURPOSE INTENDED.



PEPSI COLA BUILDING ADDITION
THE GILLETTE GROUP
 Project Location: 1900 WEST AVE S
 LA CROSSE, WI 54601
 Project Title: UTILITY/EROSION CONTROL PLAN

Project Title: UTILITY/EROSION CONTROL PLAN

HRS Project Number: 20051

Project Date: MARCH 2021

Drawn By: LAM

CONSTRUCTION DOCUMENTS

Revisions:	No.	Description	Date
	02	See Addendum #3	4/20/2021

Graphic Scale: 1"=30'

Last Update: 4/19/2021

C400