



City of La Crosse, Wisconsin

City Hall
400 La Crosse Street
La Crosse, WI 54601

Meeting Agenda - Final

Board of Public Works

Monday, July 21, 2025

10:00 AM

Grandad Room
City Hall, First Floor

The Board of Public Works meeting is open for in-person attendance and will also be conducted through video conferencing. The meeting can be viewed by visiting the Legislative Information Center (<https://cityoflacrosse.legistar.com/Calendar.aspx>) and clicking on the video link to the far right in the meeting list.)

Call to Order

Roll Call

Shaundel Washington-Spivey, Tamra Dickinson, Erin Goggin, Matt Gallagher, Andrea Trane.

Approval of Minutes

Minutes from July 14, 2025.

Agenda Items:

- [25-0106](#) Bidder's Proof of Responsibility.
- [25-0774](#) Brightspeed of Wisconsin, LLC Street Privilege Permit request for communications in right-of-way near 2846 Harvey St.
- [25-0813](#) Construction Contract Final Payment.
- [25-0823](#) Discussion and possible action on sidewalk width for La Crosse Street (STH 16) project.
- [25-0827](#) Request to approve a Memorandum of Understanding between the City of La Crosse & School District of La Crosse.

Adjournment

Notice is further given that members of other governmental bodies may be present at the above scheduled meeting to gather information about a subject over which they have decision-making responsibility.

NOTICE TO PERSONS WITH A DISABILITY

Requests from persons with a disability who need assistance to participate in this meeting should call the City Clerk's office at (608) 789-7510 or send an email to ADAcityclerk@cityoflacrosse.org, with as much advance notice as possible.



City of La Crosse, Wisconsin

City Hall
400 La Crosse Street
La Crosse, WI 54601

Text File

File Number: 25-0106

Agenda Date: 7/21/2025

Version: 1

Status: Agenda Ready

In Control: Board of Public Works

File Type: General Item



City of La Crosse, Wisconsin

City Hall
400 La Crosse Street
La Crosse, WI 54601

Text File

File Number: 25-0774

Agenda Date: 7/21/2025

Version: 1

Status: Agenda Ready

In Control: Board of Public Works

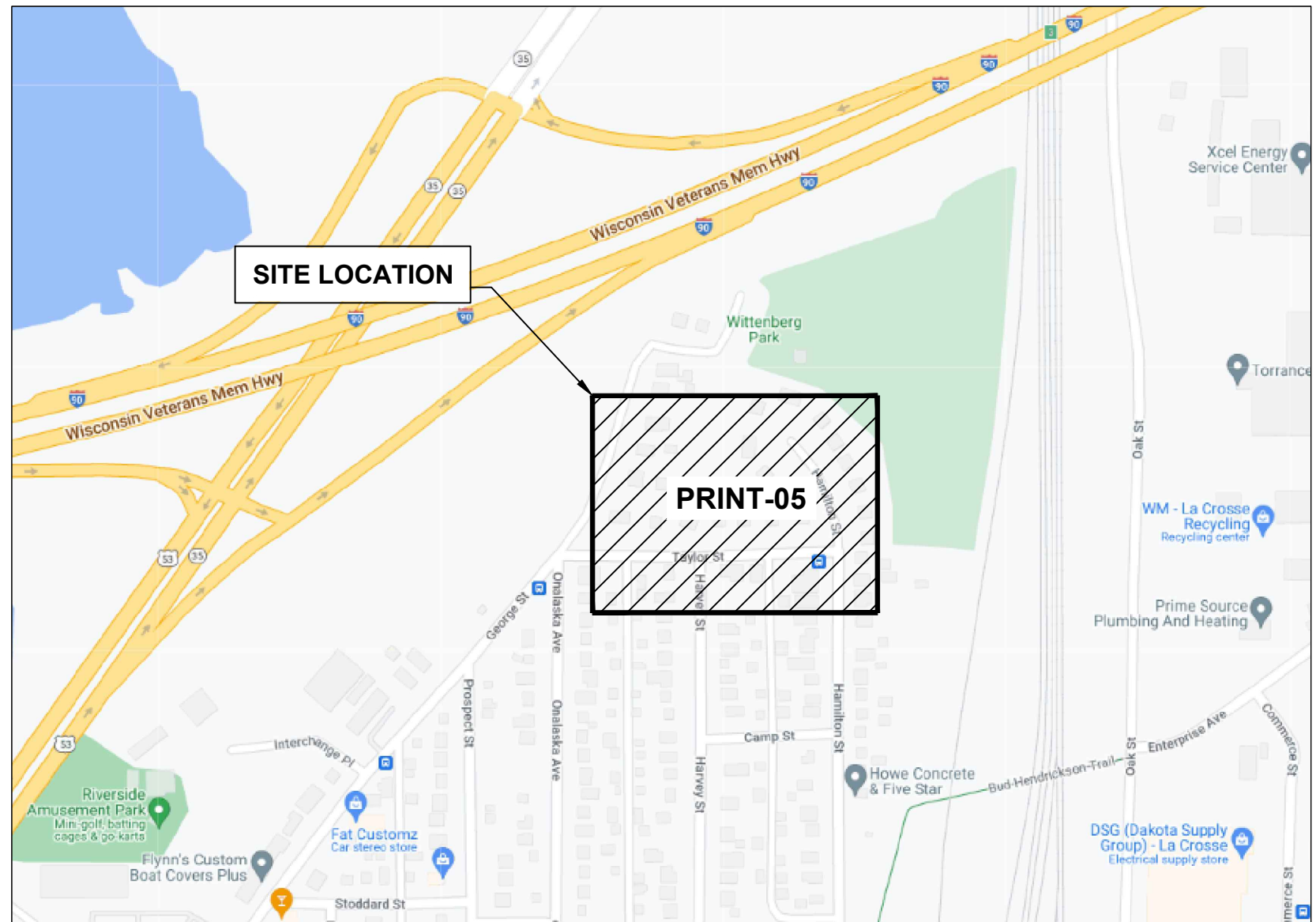
File Type: General Item

5

2845 HARVEY ST, LA CROSSE, WI 54603, USA
CONDUIT LAYOUT

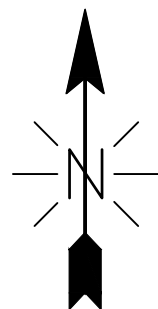
[illegible]

 brightspeed
LCRSWIXA
COVER SHEET



PERMITTING AGENCY
CITY OF LA CROSSE

LINEAR PATH FOOTAGE
UNDERGROUND PATH - 898 FT



PLAN SHEET DISCLAIMER:

1. EVERY REASONABLE EFFORT HAS BEEN MADE TO ASSURE THE ACCURACY OF THESE PLANS AND ASSOCIATED DATA.
2. IN AN EFFORT TO INCREASE THE CLARITY AND LEGIBILITY OF THE PLANS, EXISTING UNDERGROUND UTILITIES WILL NOT BE SHOWN UNLESS THERE IS PROPOSED WORK THAT WILL REQUIRE EXCAVATION OR ANY OTHER EARTH DISTURBING ACTIVITY. IF PROPOSED WORK WILL REQUIRE THIS TYPE OF ACTIVITY. EXISTING UNDERGROUND UTILITIES WILL BE PROPERLY INVESTIGATED AND REPRESENTED ON THE PLAN SHEET OF THE RESPECTIVE WORK LOCATION

UTILITIES

1. THE IDENTITY AND LOCATION OF EXISTING UNDERGROUND UTILITIES LOCATED IN AND AROUND THE CONSTRUCTION AREA HAVE BEEN SHOWN AND LABELED ON THE PLANS BY USING INFORMATION PROVIDED BY THE RESPECTIVE UTILITY OWNERS.
2. SUPPORT AND PROTECTION OF ALL UTILITIES AND APPURTENANCES SHALL BE THE RESPONSIBILITY OF THE CONTRACTOR. COSTS FOR THE REPAIR AND RESTORATION OF EXISTING UTILITIES DAMAGED BY THE CONTRACTOR SHALL BE THE RESPONSIBILITY OF THE CONTRACTOR
3. CALL 811 BEFORE YOU DIG. AT LEAST 48 HOURS PRIOR TO EXCAVATION.

WORK LIMITS

1. THE WORK LIMITS SHOWN ON THESE PLANS ARE FOR PHYSICAL CONSTRUCTION ONLY. THE INSTALLATION AND OPERATION OF ALL TEMPORARY TRAFFIC CONTROL AND TEMPORARY TRAFFIC CONTROL DEVICES REQUIRED BY THESE PLANS SHALL BE PROVIDED BY THE CONTRACTOR WHETHER INSIDE OR OUTSIDE OF THESE WORK LIMITS.

MAINTAIN DRAINAGE

1. THE CONTRACTOR AT HIS OWN EXPENSE, SHALL MAINTAIN THE FLOW IN ALL SEWERS, DRAINS, FIELD TILES, AND WATERCOURSES ENCOUNTERED IN AND AROUND THE PROJECT SITE. IF SUCH WATERCOURSES OR DRAINS ARE DISTURBED OR DESTROYED DURING THE EXECUTION OF THE PROJECT, THEY SHALL BE RESTORED BY THE CONTRACTOR AT HIS OWN EXPENSE TO A CONDITION SATISFACTORY TO THE ENGINEER.

SECURING EXCAVATIONS & TRENCHES FOR NON-WORKING HOURS

1. EXCAVATIONS AND TRENCHES OVER 24-INCHES DEEP SHALL BE SECURELY PLATED OR BACKFILLED DURING NON-WORKING HOURS.

EXCAVATION OF ROADWAY AND RIGHT-OF-WAY AREAS

1. ANY CONTRACTOR PERFORMING EXCAVATION, INCLUDING BUT NOT LIMITED TO DISTURBING THE EARTH WTH POWERED OR NON-POWERED EQUIPMENT, DRILLING AND/OR BORING, SHALL CAUSE NOTICE TO BE GIVEN BY CALLING 811 AT LEAST 48 HOURS BUT NOT MORE THAN 10 WORKING DAYS BEFORE EXCAVATING.
2. THE EXCAVATOR SHALL PROTECT AND PRESERVE THE MARKINGS UNTIL THOSE MARKINGS ARE NO LONGER NEEDED. IF AN EXCAVATION WILL COVER A LARGE AREA AND/OR PROGRESS FROM ONE AREA TO THE NEXT OVER A PERIOD OF TIME. THE EXCAVATOR SHALL COORDINATE THE MARKING OF APPROXIMATE LOCATIONS OF CITY OWNED FACILITIES WITH THE ACTUAL EXCAVATION.
3. THE CONTRACTOR IS RESPONSIBLE FOR LOCATING ALL CUSTOMER OWNED SERVICE LINES/LATERALS. THE CONTRACTOR SHALL FIELD VERIFY THE HORIZONTAL AND VERTICAL LOCATION OF ANY CITY OR CUSTOMER OWNED MAIN OR SERVICE LINE/LATERALS THAT MAY BE AFFECTED BY THE PROPOSED CONSTRUCTION ACTIVITIES. FIELD VERIFICATION SHALL TAKE PLACE PRIOR TO ANY ACTIVITY THAT MAY JEOPARDIZE THE INTEGRITY OF THE FACILITY AND AT A LOCATION NEAREST THE POINT OF POSSIBLE CONFLICT.
4. ANY DAMAGES TO CITY OR CUSTOMER OWNED FACILITIES SHOULD FIRST BE REPORTED TO THE UTILITY OWNER THEN IMMEDIATELY NOTIFY THE PROJECT ENGINEER.

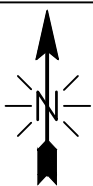
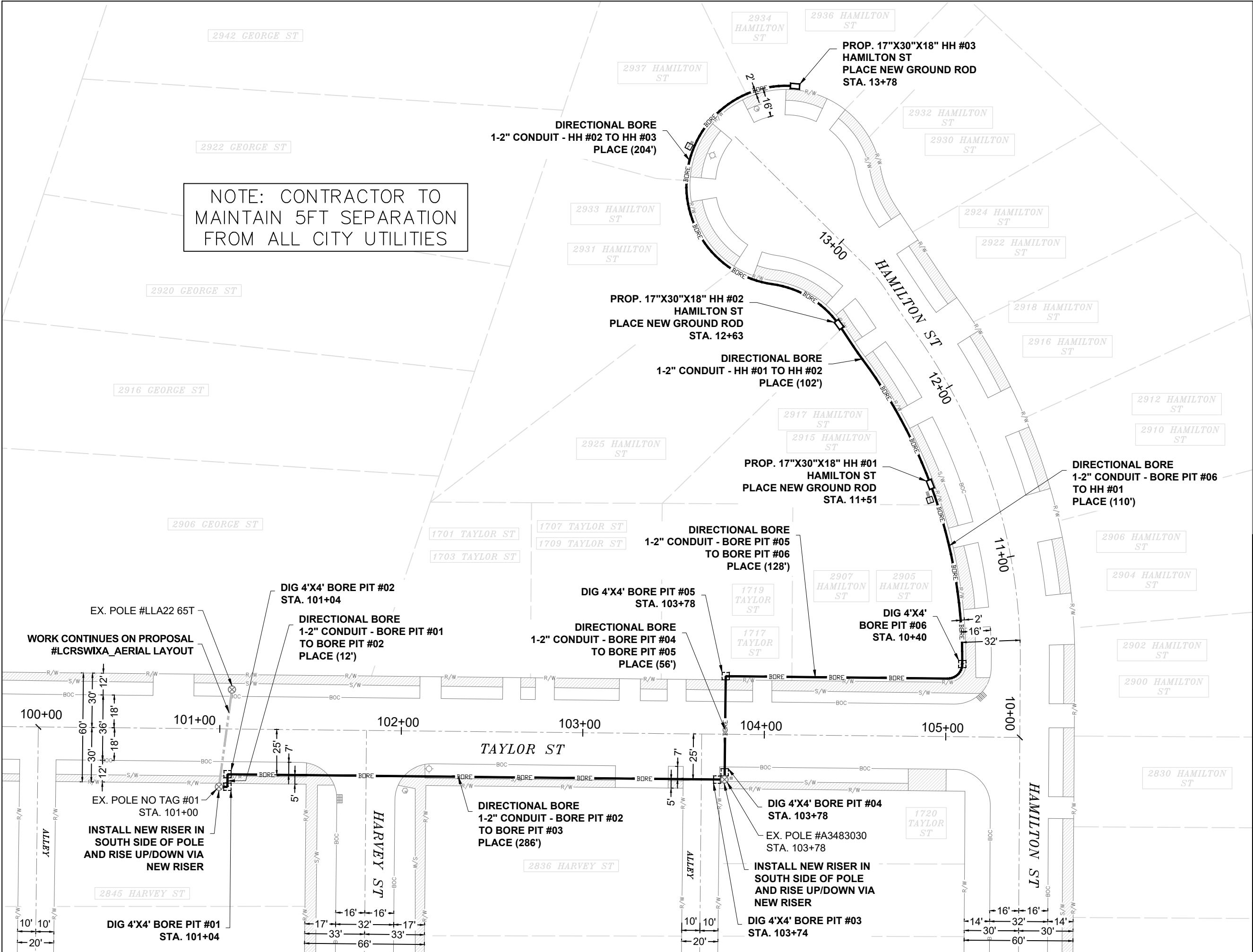
AERIAL CONSTRUCTION:

1. CONTRACTOR TO VERIFY ALL BONDING AND GROUNDING COMPLES WITH NESC GUIDELINES.
2. CONSTRUCTION TO VERIFY ALL REQUIRED MAKE READY WORK IS COMPLETE BEFORE PLACING ON UTILITY POLES.

SAFETY NOTE:

1. CHECK IN WITH CONSTRUCTION SUPERVISOR WHEN ARRIVING ON-SITE.
2. HEAVY CONSTRUCTION EQUIPMENT IN USE. BEWARE OF SURROUNDINGS.
3. FOLLOW CONGRUEX SAFETY POLICIES AND GUIDELINES AT ALL TIMES WHILE WORKING.
4. CONSTRUCTION ZONE/ HARD HAT, SAFETY GLASSES, REFLECTIVE VEST/SHIRT, SAFETY TOE BOOTS REQUIRED – WORK SAFELY

<div><div><div></div><div>CHC</div><div>A CONGRUEX® COMPANY</div></div></div>		<div>LEGENDS SHEET</div>				<div><div><div></div><div>brightspeed</div></div><div>CONFIDENTIAL AND PROPRIETARY</div><div>LCRSWIXA</div></div>
EXISTING EQUIPMENTS LEGENDS						
<div><div><div></div><div>R\W</div><div>R/W</div></div><div><div></div><div>C\L</div><div>CENTER LINE</div></div><div><div></div><div>EOP</div><div>EOP</div></div><div><div></div><div>BOC</div><div>BOC</div></div><div><div></div><div></div><div>PROPERTY LINE</div></div><div><div></div><div></div><div>FENCE</div></div><div><div></div><div>T</div><div>TELCO</div></div><div><div></div><div>E</div><div>ELECTRIC</div></div><div><div></div><div>G</div><div>GAS</div></div><div><div></div><div>TS</div><div>TRAFFIC SIGNAL</div></div><div><div></div><div>W</div><div>WATER</div></div><div><div></div><div>S</div><div>SEWER</div></div><div><div></div><div>SD</div><div>STORM DRAIN</div></div><div><div></div><div>U/E</div><div>UTILITY EASEMENT</div></div><div><div></div><div></div><div>RAIL TRACKS</div></div><div><div></div><div></div><div>SIDEWALK</div></div></div>	<div><div><div></div><div>CABINET</div></div><div><div></div><div>EXISTING PED</div></div><div><div></div><div>EXISTING FLOWERPOT</div></div><div><div></div><div>EXISTING HANDHOLE</div></div><div><div></div><div>TELEPHONE CABINET</div></div><div><div></div><div>TELEPHONE MANHOLE</div></div><div><div></div><div>POLE</div></div><div><div></div><div>CABLE MARKER</div></div><div><div></div><div>STREET SIGN</div></div><div><div></div><div>VERTICAL GROUND</div></div><div><div></div><div>ELECTRIC PEDESTAL/CABINET</div></div></div>	<div><div><div></div><div>ELECTRIC TRANSFORMER</div></div><div><div></div><div>ELECTRIC METER</div></div><div><div></div><div>ELECTRIC VAULT/HANDHOLE</div></div><div><div></div><div>ELECTRIC MANHOLE</div></div><div><div></div><div>EXISTING VAULT</div></div><div><div></div><div>STREETLIGHT</div></div><div><div></div><div>POWER PED</div></div><div><div></div><div>CATV PED</div></div><div><div></div><div>CATV VAULT/HANDHOLE</div></div><div><div></div><div>TREE</div></div><div><div></div><div>TRANSFORMER</div></div></div>	<div><div><div></div><div>GAS METER</div></div><div><div></div><div>GAS VALVE</div></div><div><div></div><div>SEWER MANHOLE</div></div><div><div></div><div>UNKNOWN MANHOLE</div></div><div><div></div><div>WATER METER</div></div><div><div></div><div>WATER VALVE</div></div><div><div></div><div>FIRE HYDRANT</div></div><div><div></div><div>WATER MANHOLE</div></div><div><div></div><div>STORM DRAIN CATCH BASIN</div></div><div><div></div><div>STORM DRAIN MANHOLE</div></div></div>	<div><div><div></div><div>CULVERT</div></div><div><div></div><div>C/L MONUMENT</div></div><div><div></div><div>ANCHOR & DOWN GUY</div></div></div>		
PROPOSED EQUIPMENTS LEGENDS						
<div><div><div></div><div>BORE</div><div>BORE</div><div>BORE</div></div><div><div></div><div>TRENCH</div></div><div><div></div><div>A</div><div>AERIAL FIBER</div></div><div><div></div><div>AERIAL STRAND</div></div></div>	<div><div><div></div><div>12"X24"X18" HANDHOLE</div></div><div><div></div><div>17"X30"X18" HANDHOLE</div></div><div><div></div><div>24"X36"X24" HANDHOLE</div></div><div><div></div><div>36"X48"X30" HANDHOLE</div></div><div><div></div><div>ANCHOR & DOWN GUY</div></div></div>					



EXCAVATION DATA	
PROPOSED UTILITY	DIRT
(6) 4'X4' BORE PIT	96 SQFT
(3) 17"X30"X18" HH	10.62 SQFT
CALL 811 BEFORE YOU DIG. WISCONSIN TOLL FREE 800-242-8511	
	
 A CONGRUEX® COMPANY	
CONFIDENTIAL AND PROPRIETARY	
LCRSWIXA	
05 OF 05	
SCALE: 1" = 50'	



REVOCABLE OCCUPANCY / STREET PRIVILEGE PERMIT APPLICATION FOR COMMUNICATIONS (FIBER OPTICS, TELEPHONE, CABLE, ETC.)

City of La Crosse Engineering Department

Phone: 608-789-7505 Email: engineering@cityoflacrosse.org <http://cityoflacrosse.org>

Encroachment Owner: Brightspeed of Wisconsin, LLC

Address: 1120 South Tryon St #700 City: Charlotte State: NC Zip: 28203

Phone # (913) 547-5570 Email Address Bryan.Williams@brightspeed.com

Application Preparer (if different from above) CNS Networks, LLC

Relationship with Owner: Consulting Firm

Phone # 972-325-7885 Email Address brightspeed-permits@congruex.com

Description of Proposed Encroachment:

Brightspeed proposes to bore and place 898 ft of (1)-2" conduit; Place three (3) 17"x30"x18" HH.

Encroachment Addresses (List by Street and 100 blocks):

2846 Harvey St

I certify that I have reviewed the Municipal Code and understand all that is related to this permit request. I further certify that I have the full authority to make the foregoing application; the information in the application and the required submittals are complete and correct; the Work or Use performed shall comply with all the laws of the State of Wisconsin, and all ordinances, rules, regulations, policies and special conditions of the City of La Crosse. The applicant agrees to perform the work covered by an approved permit with diligence and convenience to the public. **See Sheet 2 of 2 for Additional Conditions.**

Signature of Owner or designee: Brittany Bruneau Date: 06/24/2025

Print Name and Title: Brittany Bruneau - Permit Specialist

Please return this completed application along with required information and fees noted on checklist below to: City of La Crosse, Engineering Department, 400 La Crosse Street, La Crosse, WI 54601. You will then be given notice of when your request will be on the Board of Public Works agenda for consideration. **Average completion time for validation 45 days.**

BELOW THIS LINE TO BE COMPLETED BY CITY STAFF ONLY

Required items to be provided by Applicant:

Scale Drawing of encroachments ☐

(City Utilities, Lighting and Signals must be shown on Proposed Communications Plan)

Certificate of Insurance (City as additional Insured) ☐

Initial Application Fee \$ ☐

City Utility Potential Conflict Notification and Sign-Off ☐

Board of Public Works Approval Date:

Encroachment Type:

Permit Number:

All Fees are Non-Refundable & Subject to change by City Council

SHEET 1 OF 2



REVOCABLE OCCUPANCY / STREET PRIVILEGE PERMIT APPLICATION

City of La Crosse Engineering Department

Phone: 608-789-7505 Email: engineering@cityoflacrosse.org <http://cityoflacrosse.org>

STREET PRIVILEGE PERMIT CONDITIONS FOR COMMUNICATIONS INSTALLATIONS

1. The applicant shall be primarily liable for damages to person or property by reason of the granting of this street privilege permit.
2. The applicant shall obtain an excavation permit from the City of La Crosse Engineering Department prior to performing installation or any maintenance on the cable in the City right-of-way that requires excavation or disruption of pavement, sidewalk, curb and gutter, or other structure.
3. The applicant agrees that tracer wires shall be used and final cable location within the street right-of-way shall be approved by the City Engineer. Cable shall be installed not less than 36 inches deep, unless otherwise approved by the City Engineer.
4. Applicant agrees to provide the City of La Crosse with final "as-built" plans when installation is complete.
5. Applicant agrees that any pavement, concrete or green space disturbed during drilling activities shall be restored to its prior condition.
6. Applicant agrees that said installation shall not interfere with the City's water, sanitary sewer, or storm sewer underground infrastructure that may be in the area.
7. Applicant further agrees that they will make arrangements with the public utility companies and the City of La Crosse to clear all public underground utilities prior to initiating such work, and if necessary, applicant will make arrangements with the City of La Crosse to ensure proper traffic control.
8. Applicant waives any and all rights to contest in any way or manner the validity of Sec. 66.0425 of the Wisconsin Statutes and the amount of compensation charged.
9. Applicant agrees to become a member of Diggers Hotline for marking / locating of utility.
10. The applicant for a permit to encroach on the public right-of-way shall procure and maintain for the duration of the permit a minimum liability and contractual liability policy in the amount of \$100,000.00 each person, \$300,000.00 each accident for bodily injury and \$100,000.00 for property damage. A certificate of such insurance shall be filed with the City Attorney as part of the application. The insurance shall name the City, its officials, employees and agents as additional insureds. The Board may approve greater insurance protection on a case-by-case basis.
11. Applicant further agrees to hold harmless the City for any damage to said cable while the City, its agents or contractors are conducting construction for maintenance activities in or upon such area in which said cable lies; provided, however, the City shall make a good faith effort to notify applicant of any maintenance or work in the area of the street privilege permit which may damage applicant's cable.
12. Applicant agrees to remove the cable and return the area to its original condition upon ten (10) days' notice by the Board of Public Works. The applicant further agrees that if it does not remove the cable within ten (10) days after receiving notice, the City is authorized to remove the same and applicant agrees to pay the City for all costs of such removal.
13. Applicant further agrees that the obligations and conditions of this street privilege permit shall be binding upon all heirs, successors and assigns of applicant.
14. The person(s) signing this Permit warrant that they have the authority to sign as, or on behalf of, the party for whom they are signing.



City of La Crosse, Wisconsin

City Hall
400 La Crosse Street
La Crosse, WI 54601

Text File

File Number: 25-0813

Agenda Date: 7/21/2025

Version: 1

Status: Agenda Ready

In Control: Board of Public Works

File Type: General Item

BOARD OF PUBLIC WORKS - MONTHLY ESTIMATE

Contractor	Gerke Excavating, Inc.	Estimate Number	#4 July
	15341 State Highway 131, Tomah, WI 54660	Resolution Number	24-0844
Contract	2024 Pettibone Watermain Extension	Contingency Amount	\$42,550.66
Date	July-25	Contract Amount	\$667,449.34
EDF #	24-035	Change Order #2	\$694,241.46
Job Number	PRKS-24-33		

FINAL

Section Title	Line Item	Item Code	Item Description	Unit of Measure	Quantity	Unit Price	Total
Base Bid							
	1	1000	HDPE Water Service Line (2")	LF	160.0	\$30.40	\$4,864.00
	2	1001	HDPE Water Service Line Horizontally Drilled (2")	LF	129.0	\$37.20	\$4,798.80
	3	1002	HDPE Water Service Line (3/4")	LF	0.0	\$28.39	\$0.00
	4	1003	Furnish & Install Drinking Fountain	LS	0.0	\$16,275.00	\$0.00
	5	1004	Strip, Stockpile & Reuse Topsoil	SY	1190.0	\$3.22	\$3,831.80
	6	1005	Abandon Bath House Well	LS	1.0	\$3,754.85	\$3,754.85
	7	1006	Water Supply Plumbing Modifications at Bath House	LS	1.0	\$33,075.00	\$33,075.00
	8	1007	Sanitary Sewer Plumbing Modifications at Bath House	LS	1.0	\$81,341.56	\$81,341.56
	9	1008	Remove & Reinstall Sign	EA	0.0	\$1,158.95	\$0.00
	10	1015	Tapping Saddle (6"x2")	EA	1.0	\$1,184.97	\$1,184.97
	11	5.01	Sawing (Concrete)	LF	148.0	\$2.68	\$396.64
	12	5.02	Sawing (Bituminous)	LF	400.0	\$2.05	\$820.00
	13	12.01	Remove Concrete Pavement (Standard)	SY	97.0	\$15.11	\$1,465.67
	14	15.01	Remove Bituminous Concrete Pavement (Standard)	SY	313.0	\$12.44	\$3,893.72
	15	115	Concrete Pavement (7")	SY	97.0	\$136.78	\$13,267.66
C.O. #2	16	130	Bituminous Concrete Pavement (5" Residential) - 3" Actual	SY	229.0054	\$105.20	\$24,091.37
	17	135	Erosion Control Installation & Maintenance	LS	0.0	\$3,439.75	\$0.00
	18	140	Restoration (Matting)	SY	3826.0	\$3.63	\$13,888.38
	19	145	Temporary Traffic Control & Maintenance	LS	1.00	\$3,675.00	\$3,675.00
	20	407	New DIP Water Main (6")	LF	1339.0	\$164.59	\$220,386.01
	21	411	New Gate Valve (6")	EA	1.0	\$3,735.53	\$3,735.53
	22	416	New Hydrant & Valve Cluster Group (Short Lead)	EA	2.0	\$9,148.80	\$18,297.60
	23	420	Corporation Stop (3/4")	EA	0.0	\$599.83	\$0.00
	24	420	Corporation Stop (2")	EA	1.0	\$1,054.05	\$1,054.05
	25	421	Copper Water Service Line (3/4")	LF	0.0	\$306.42	\$0.00
	26	421	Copper Water Service Line (2")	LF	2.0	\$784.07	\$1,568.14
	27	422	Curb Stop & Shut-off Box (3/4")	EA	0.0	\$749.89	\$0.00
	28	422	Curb Stop & Shut-off Box (2")	EA	1.0	\$1,315.98	\$1,315.98
Page 1 of 4							

22

	FINAL
Estimate Number	#4 July
Resolution Number	24-0844
Contingency Amount	\$42,550.66
Contract Amount	\$667,449.34
Change Order #2	\$694,241.46

Section Title	Line Item	Item Code	Item Description	Unit of Measure	Quantity	Unit Price	Total
Bid Alternate #1							
	29	1000	HDPE Water Service Line (2")	LF	3.0	\$366.26	\$1,098.78
	30	1004	Strip, Stockpile & Reuse Topsoil	SY	1146.0	\$3.18	\$3,644.28
	31	1009	Salvage & Reuse Existing Base Course (6")	SY	0.0	\$20.00	\$0.00
	32	1010	Water Service Line (4")	LF	1177.0	\$74.96	\$88,227.92
	33	1011	Water Service Line Horizontally Drilled (4")	LF	403.0	\$74.31	\$29,946.93
	34	1012	New Flushing Hydrant & Valve Cluster Group (2")	EA	2.0	\$6,117.05	\$12,234.10
	35	1014	New Gate Valve (4")	EA	3.0	\$2,027.58	\$6,082.74
	36	1015	Tapping Saddle (4"x2")	EA	1.0	\$1,184.68	\$1,184.68
	37	5.02	Sawing (Bituminous)	LF	200.0	\$2.05	\$410.00
	38	15.01	Remove Bituminous Concrete Pavement (Standard)	SY	206.0	\$18.52	\$3,815.12
C.O. #2	39	130	Bituminous Concrete Pavement (5" Residential) - 3" Actual	SY	205.9946	\$94.87	\$19,542.71
	40	140	Restoration (Matting)	SY	1258.0	\$3.63	\$4,566.54
	41	420	Corporation Stop (2")	EA	1.0	\$1,054.05	\$1,054.05
	42	422	Curb Stop Shut-off & Box (2")	EA	1.0	\$1,303.14	\$1,303.14
Bid Alternate #2							
	43	1000	HDPE Water Service Line (2")	LF	3.0	\$366.26	\$1,098.78
	44	1004	Strip, Stockpile & Reuse Topsoil	SY	30.0	\$3.30	\$99.00
	45	1010	Water Service Line (4")	LF	5.0	\$268.10	\$1,340.50
	46	1011	Water Service Line Horizontally Drilled (4")	LF	934.0	\$26.98	\$25,199.32
	47	1013	New Flushing Hydrant & Valve Cluster Group (4")	EA	1.0	\$5,627.82	\$5,627.82
	48	1015	Tapping Saddle (4"x2")	EA	1.0	\$1,189.72	\$1,189.72
	49	140	Restoration (Matting)	SY	80.0	\$35.57	\$2,845.60
	50	420	Corporation Stop (2")	EA	1.0	\$1,054.05	\$1,054.05
	51	422	Curb Stop Shut-off & Box (2")	EA	1.0	\$1,303.14	\$1,303.14
Page 2 of 4							

23

	FINAL
Estimate Number	#4 July
Resolution Number	24-0844
Contingency Amount	\$42,550.66
Contract Amount	\$667,449.34
Change Order #2	\$694,241.46

23

BOARD OF PUBLIC WORKS - MONTHLY ESTIMATE

Contractor	Gerke Excavating, Inc.	Estimate Number	#4 July
Contract	15341 State Highway 131, Tomah, WI 54660	Resolution Number	24-0844
Date	2024 Pettibone Watermain Extension	Contingency Amount	\$42,550.66
EDF #	July-25	Contract Amount	\$667,449.34
Job Number	24-035	Change Order #2	\$694,241.46
	PRKS-24-33		

Section Title	Line Item	Item Code	Item Description	Unit of Measure	Quantity	Unit Price	Total
			Current Payment is for 2025 Work				
Total Completed							\$700,403.34
Less 0% Retainage							\$0.00
Amount due on Contract of total amount of work to date:							\$700,403.34

Signed by:

7/2/2025

20

Audited

David Tauscher

B7509F2EE0F24E0...

DocuSigned by:

Chadwick Hawkins

A93F306A40954A6...

COMPROLLER

Total Previous Estimates

\$638,138.06

Estimate No. #4 July

\$62,265.28

RESOLUTION

RESOLVED:

That an order be drawn in favor of Gerke Excavating, Inc.....

for the sum of

\$62,265.28

the same being payment of the estimate for the 2024 Pettibone Watermain Extension

Respectfully Submitted,
COUNCIL COMMITTEE

APPROVED BY BOARD OF PUBLIC WORKS



City of La Crosse, Wisconsin

City Hall
400 La Crosse Street
La Crosse, WI 54601

Text File

File Number: 25-0823

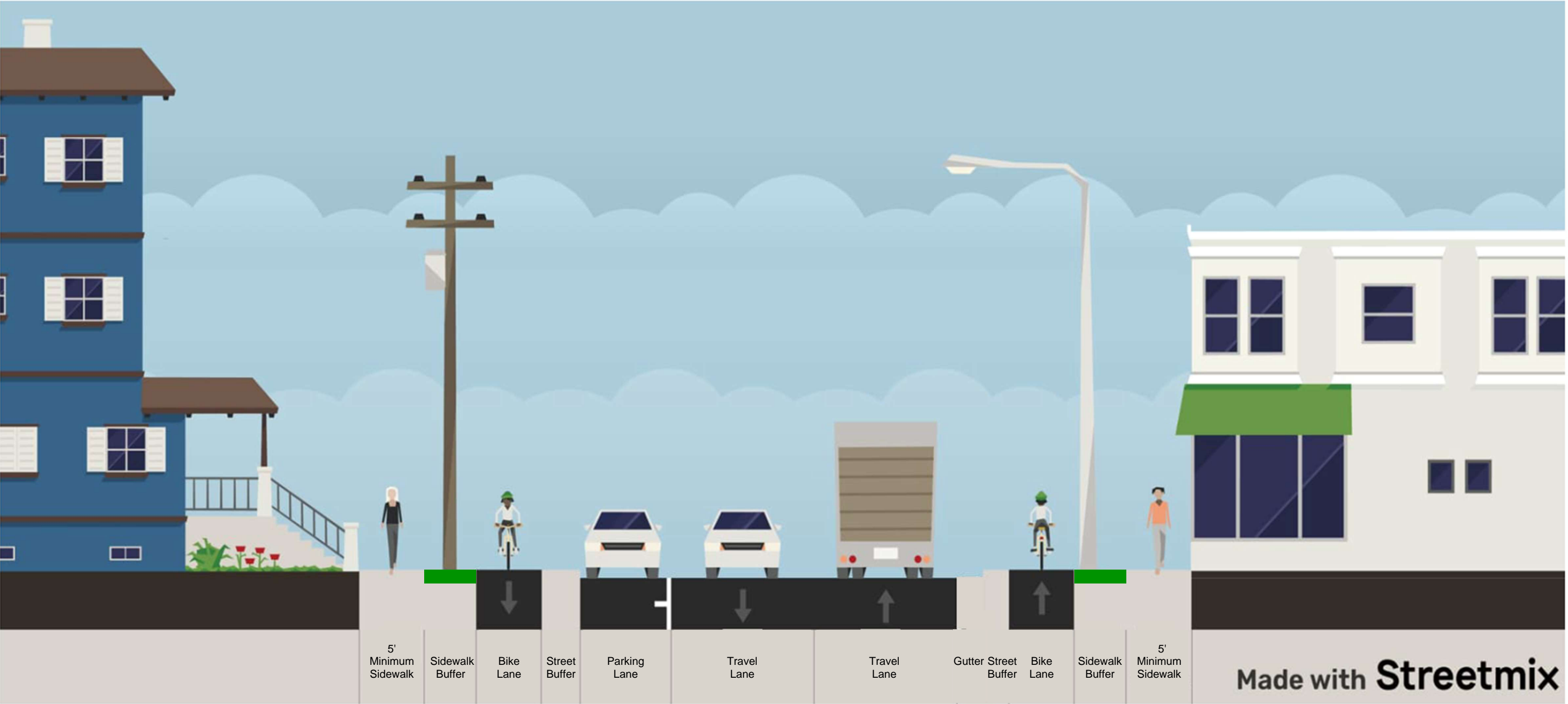
Agenda Date: 7/21/2025

Version: 1

Status: Agenda Ready

In Control: Board of Public Works

File Type: General Item





City of La Crosse, Wisconsin

City Hall
400 La Crosse Street
La Crosse, WI 54601

Text File

File Number: 25-0827

Agenda Date: 7/21/2025

Version: 1

Status: Agenda Ready

In Control: Board of Public Works

File Type: General Item

MEMORANDUM OF UNDERSTANDING

This Memorandum of Understanding ("Agreement") is made and entered into between the City of La Crosse ("COL"), and the School District of La Crosse ("SDLax").

WHEREAS, the COL and SDLax have worked cooperatively to plan a model for fiber sharing; and

WHEREAS, this cooperation is mutually beneficial for both agencies;

NOW, THEREFORE, the fiber optic sharing is agreed upon by both parties.

City and SDLax will continue to work cooperatively and agree any amendments to the Agreement must be mutually agreed to in writing.

The parties hereto execute this Agreement through their authorized representatives:

City of La Crosse

School District of La Crosse

Mayor

Director of Technology

Dated

Dated

BOARD OF PUBLIC WORKS - MONTHLY ESTIMATE

Contractor Gerke Excavating, Inc.
Contract 15341 State Highway 131, Tomah, WI 54660
Date 2024 Pettibone Watermain Extension
EDF # July-25
Job Number 24-035
 PRKS-24-33

FINAL

Estimate Number #4 July
Resolution Number 24-0844
Contingency Amount \$42,550.66
Contract Amount \$667,449.34
Change Order #2 \$694,241.46

Section Title	Line Item	Item Code	Item Description	Unit of Measure	Quantity	Unit Price	Total
Base Bid							
	1	1000	HDPE Water Service Line (2")	LF	160.0	\$30.40	\$4,864.00
	2	1001	HDPE Water Service Line Horizontally Drilled (2")	LF	129.0	\$37.20	\$4,798.80
	3	1002	HDPE Water Service Line (3/4")	LF	0.0	\$28.39	\$0.00
	4	1003	Furnish & Install Drinking Fountain	LS	0.0	\$16,275.00	\$0.00
	5	1004	Strip, Stockpile & Reuse Topsoil	SY	1190.0	\$3.22	\$3,831.80
	6	1005	Abandon Bath House Well	LS	1.0	\$3,754.85	\$3,754.85
	7	1006	Water Supply Plumbing Modifications at Bath House	LS	1.0	\$33,075.00	\$33,075.00
	8	1007	Sanitary Sewer Plumbing Modifications at Bath House	LS	1.0	\$81,341.56	\$81,341.56
	9	1008	Remove & Reinstall Sign	EA	0.0	\$1,158.95	\$0.00
	10	1015	Tapping Saddle (6"x2")	EA	1.0	\$1,184.97	\$1,184.97
	11	5.01	Sawing (Concrete)	LF	148.0	\$2.68	\$396.64
	12	5.02	Sawing (Bituminous)	LF	400.0	\$2.05	\$820.00
	13	12.01	Remove Concrete Pavement (Standard)	SY	97.0	\$15.11	\$1,465.67
	14	15.01	Remove Bituminous Concrete Pavement (Standard)	SY	313.0	\$12.44	\$3,893.72
	15	115	Concrete Pavement (7")	SY	97.0	\$136.78	\$13,267.66
C.O. #2	16	130	Bituminous Concrete Pavement (5" Residential) - 3" Actual	SY	229.0054	\$105.20	\$24,091.37
	17	135	Erosion Control Installation & Maintenance	LS	0.0	\$3,439.75	\$0.00
	18	140	Restoration (Matting)	SY	3826.0	\$3.63	\$13,888.38
	19	145	Temporary Traffic Control & Maintenance	LS	1.00	\$3,675.00	\$3,675.00
	20	407	New DIP Water Main (6")	LF	1339.0	\$164.59	\$220,386.01
	21	411	New Gate Valve (6")	EA	1.0	\$3,735.53	\$3,735.53
	22	416	New Hydrant & Valve Cluster Group (Short Lead)	EA	2.0	\$9,148.80	\$18,297.60
	23	420	Corporation Stop (3/4")	EA	0.0	\$599.83	\$0.00
	24	420	Corporation Stop (2")	EA	1.0	\$1,054.05	\$1,054.05
	25	421	Copper Water Service Line (3/4")	LF	0.0	\$306.42	\$0.00
	26	421	Copper Water Service Line (2")	LF	2.0	\$784.07	\$1,568.14
	27	422	Curb Stop & Shut-off Box (3/4")	EA	0.0	\$749.89	\$0.00
	28	422	Curb Stop & Shut-off Box (2")	EA	1.0	\$1,315.98	\$1,315.98
Page 1 of 4							

22

	FINAL
Estimate Number	#4 July
Resolution Number	24-0844
Contingency Amount	\$42,550.66
Contract Amount	\$667,449.34
Change Order #2	\$694,241.46

Section Title	Line Item	Item Code	Item Description	Unit of Measure	Quantity	Unit Price	Total
Bid Alternate #1							
	29	1000	HDPE Water Service Line (2")	LF	3.0	\$366.26	\$1,098.78
	30	1004	Strip, Stockpile & Reuse Topsoil	SY	1146.0	\$3.18	\$3,644.28
	31	1009	Salvage & Reuse Existing Base Course (6")	SY	0.0	\$20.00	\$0.00
	32	1010	Water Service Line (4")	LF	1177.0	\$74.96	\$88,227.92
	33	1011	Water Service Line Horizontally Drilled (4")	LF	403.0	\$74.31	\$29,946.93
	34	1012	New Flushing Hydrant & Valve Cluster Group (2")	EA	2.0	\$6,117.05	\$12,234.10
	35	1014	New Gate Valve (4")	EA	3.0	\$2,027.58	\$6,082.74
	36	1015	Tapping Saddle (4"x2")	EA	1.0	\$1,184.68	\$1,184.68
	37	5.02	Sawing (Bituminous)	LF	200.0	\$2.05	\$410.00
	38	15.01	Remove Bituminous Concrete Pavement (Standard)	SY	206.0	\$18.52	\$3,815.12
C.O. #2	39	130	Bituminous Concrete Pavement (5" Residential) - 3" Actual	SY	205.9946	\$94.87	\$19,542.71
	40	140	Restoration (Matting)	SY	1258.0	\$3.63	\$4,566.54
	41	420	Corporation Stop (2")	EA	1.0	\$1,054.05	\$1,054.05
	42	422	Curb Stop Shut-off & Box (2")	EA	1.0	\$1,303.14	\$1,303.14
Bid Alternate #2							
	43	1000	HDPE Water Service Line (2")	LF	3.0	\$366.26	\$1,098.78
	44	1004	Strip, Stockpile & Reuse Topsoil	SY	30.0	\$3.30	\$99.00
	45	1010	Water Service Line (4")	LF	5.0	\$268.10	\$1,340.50
	46	1011	Water Service Line Horizontally Drilled (4")	LF	934.0	\$26.98	\$25,199.32
	47	1013	New Flushing Hydrant & Valve Cluster Group (4")	EA	1.0	\$5,627.82	\$5,627.82
	48	1015	Tapping Saddle (4"x2")	EA	1.0	\$1,189.72	\$1,189.72
	49	140	Restoration (Matting)	SY	80.0	\$35.57	\$2,845.60
	50	420	Corporation Stop (2")	EA	1.0	\$1,054.05	\$1,054.05
	51	422	Curb Stop Shut-off & Box (2")	EA	1.0	\$1,303.14	\$1,303.14
Page 2 of 4							

23

Estimate Number	#4 July
Resolution Number	24-0844
Contingency Amount	\$42,550.66
Contract Amount	\$667,449.34
Change Order #2	\$694,241.46

Estimate Number	#4 July
Resolution Number	24-0844
Contingency Amount	\$42,550.66
Contract Amount	\$667,449.33
Change Order #2	\$694,241.40

Page 3 of 4

BOARD OF PUBLIC WORKS - MONTHLY ESTIMATE

Contractor	Gerke Excavating, Inc.	Estimate Number	#4 July
Contract	15341 State Highway 131, Tomah, WI 54660	Resolution Number	24-0844
Date	2024 Pettibone Watermain Extension	Contingency Amount	\$42,550.66
EDF #	July-25	Contract Amount	\$667,449.34
Job Number	24-035	Change Order #2	\$694,241.46
	PRKS-24-33		

Section Title	Line Item	Item Code	Item Description	Unit of Measure	Quantity	Unit Price	Total
			Current Payment is for 2025 Work				
Total Completed							\$700,403.34
Less 0% Retainage							\$0.00
Amount due on Contract of total amount of work to date:							\$700,403.34

Signed by:

7/2/2025

20

Audited

David Tauscher

B7509F2EE0F24E0...

DocuSigned by:

Chadwick Hawkins

A93F306A40954A6...

COMPROLLER

Total Previous Estimates

\$638,138.06

Estimate No. #4 July

\$62,265.28

RESOLUTION

RESOLVED:

That an order be drawn in favor of Gerke Excavating, Inc.....

for the sum of

\$62,265.28

the same being payment of the estimate for the 2024 Pettibone Watermain Extension

Respectfully Submitted,
COUNCIL COMMITTEE

APPROVED BY BOARD OF PUBLIC WORKS