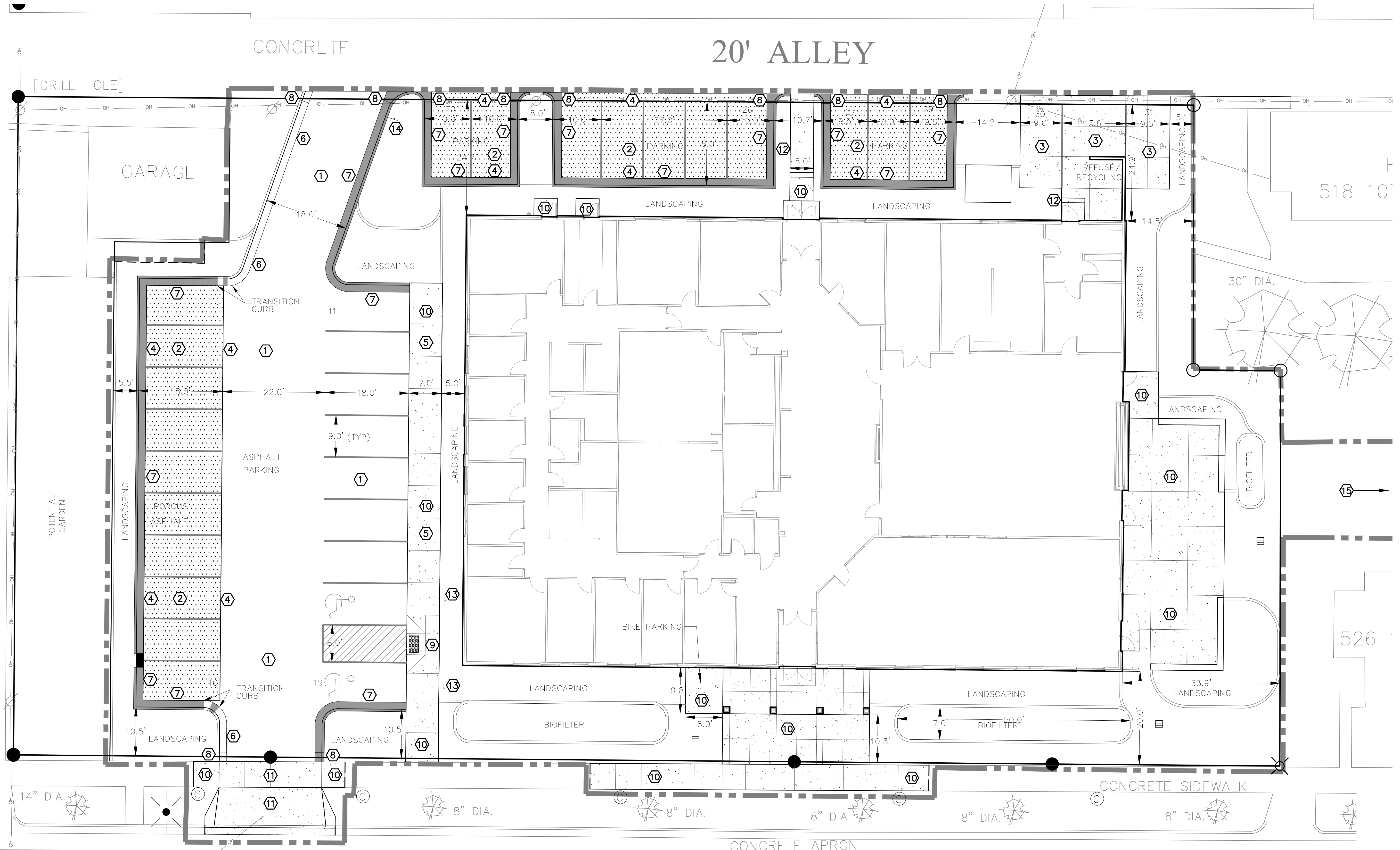


CONCRETE 20' ALLEY



# FERRY STREET

### SITE NOTES

-THE LOCATION OF EXISTING UTILITIES, BOTH UNDERGROUND AND OVERHEAD ARE APPROXIMATE ONLY AND HAVE NOT BEEN INDEPENDENTLY VERIFIED BY THE OWNER OR ITS REPRESENTATIVES. THE CONTRACTOR SHALL BE RESPONSIBLE FOR DETERMINING THE EXACT LOCATION OF ALL EXISTING UTILITIES, WHETHER SHOWN ON THESE PLANS OR NOT, BEFORE COMMENCING WORK, AND SHALL BE FULLY RESPONSIBLE FOR ANY AND ALL DAMAGES WHICH MIGHT BE CAUSED BY THE CONTRACTOR'S FAILURE TO EXACTLY LOCATE AND PRESERVE ANY AND ALL UTILITIES. CALL DIGGER'S HOTLINE (800) 242-8511.

-THE UNDERGROUND LOCATIONS OF THE PUBLIC UTILITIES WERE MARKED BY REPRESENTATIVES OF THOSE COMPANIES. THE LOCATIONS OF THE PRIVATELY OWNED UNDERGROUND UTILITIES WERE NOT MARKED.

-THERE MAY BE MORE UNDERGROUND UTILITY INSTALLATIONS WITHIN THE PROJECT AREA THAT ARE NOT SHOWN.

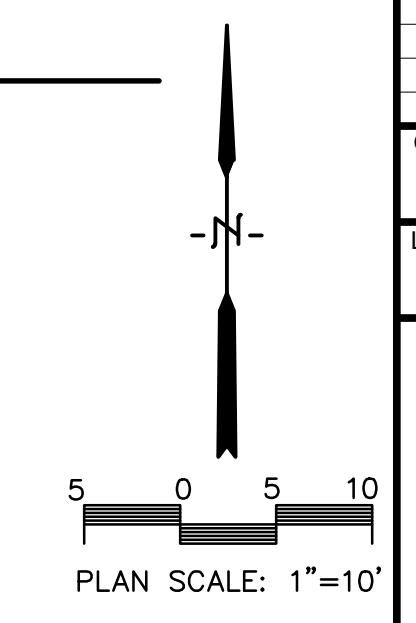
-IT SHALL BE THE CONTRACTOR'S RESPONSIBILITY TO ARRANGE FOR ANY NECESSARY INSPECTIONS BY LOCAL GOVERNMENT THAT MAY BE REQUIRED.

-ANY AND ALL PARTIES UTILIZING VERTICAL DATUM SHALL ALWAYS CHECK INTO AT LEAST TWO (2) BENCHMARKS TO AVOID MISTAKES DUE TO HYDRANT ADJUSTMENTS OR TRANPOSITIONAL ERRORS. FAILURE TO DO SO WILL BE CONSIDERED TANTAMOUNT TO GROSS NEGLIGENCE AND SUBJECT THE OFFENDING PARTY TO ANY DAMAGES RESULTING THEREFROM.

### SITE NOTES

- ① SEE DETAIL (A) FOR LIGHT DUTY PAVEMENT SECTION
- ② SEE DETAIL (B) FOR POROUS FLEXIBLE PAVEMENT SECTION
- ③ SEE DETAIL (C) FOR CONCRETE PAVEMENT
- ④ SEE DETAIL (D) FOR CRITICAL INTERFACE TO RESERVOIR COURSE
- ⑤ SEE DETAIL (E) FOR INTEGRAL CURB/SIDEWALK SECTION
- ⑥ SEE DETAIL (F) FOR TYPICAL 24" CURB AND GUTTER SECTION
- ⑦ SEE DETAIL (G) FOR 24" CURB AND GUTTER SECTION - REVERSE SLOPE
- ⑧ SEE DETAIL (H) FOR END SECTION CURB AND GUTTER
- ⑨ SEE DETAIL (I) FOR SIDEWALK RAMP
- ⑩ SEE DETAIL (J) FOR CONCRETE PAVING AND JOINTING
- ⑪ SEE DETAIL (K) FOR STANDARD CONCRETE APRON
- ⑫ SEE DETAIL (L) FOR REINFORCED CONCRETE STEP
- ⑬ SEE DETAIL (M) FOR DISABLED SIGN DETAIL
- ⑭ SEE DETAIL (N) FOR "RIGHT TURN ONLY" SIGN DETAIL

⑮ SEE SHEET C400 FOR EXTENTS OF CURB AND PAVEMENT REPLACEMENT ON 10TH STREET



ARCHITECTURE  
ENGINEERING  
INTERIOR DESIGN



**HSR ASSOCIATES INC.**  
100 MILWAUKEE STREET  
LA CROSSE, WISCONSIN  
PHONE: 608.784.1830  
FAX: 608.782.5844  
WEB SITE: www.hsrasociates.com

Consultant:



**PARAGON ASSOCIATES**  
Environmental Design & Consulting  
CIVIL ENGINEERING - LANDSCAPE ARCHITECTURE - SURVEYING  
632 COPPELAND AVENUE - LA CROSSE, WI 54603  
Tel: 608.781.3110 Fax: 608.781.3187 Paragon-Associates

**COULEE REGION RECOVERY CENTER**  
 FERRY STREET  
 LA CROSSE, WISCONSIN  
**SITE PLAN - OPTION 3**

Project Title:  
Project Location:  
Sheet Title:

HSR Project Number:

**AUTO PROJECT #**

Project Date:  
**08/21/17**

Drawn By:  
**C.G.**

Key Plan:

**REVIEW**  
**NOT FOR CONSTRUCTION**

No.	Description	Date

Graphic Scale:  
**1"=10'**

Last Update:  
**09/01/17**

C100