

BENCH MARK
ELEVATIONS ARE REFERENCED TO NAVD 88 DATUM.

BENCH MARK #1
BURN BOX ON HYDRANT LOCATED ON THE NORTHEAST CORNER OF THE INTERSECTION OF JOHNSON STREET AND 8TH STREET SOUTH.
ELEVATION = 672.75

BENCH MARK #2
NORTHWEST FLANGE BOLT ON HYDRANT LOCATED ON THE NORTHEAST CORNER OF THE INTERSECTION OF ADAMS STREET AND 8TH STREET SOUTH.
ELEVATION = 672.64

BENCH MARK #3
WOOD NAIL SET IN POWER POLE LOCATED ON THE SOUTH SIDE OF ADAMS STREET APPROXIMATELY 160 FEET WEST OF 8TH STREET SOUTH.
ELEVATION = 669.68

UTILITY DISCLAIMER

The locations of all above ground utilities and appurtenances (i.e. manhole rims, valve box covers, hydrants, transformers, etc.), of which can be visually inspected, are shown hereon based on actual surveyed location. Rim elevations of sanitary sewer and storm sewer manholes, of which can be visually inspected, are shown hereon based on actual surveyed elevation. Depths, sizes, and material types of pipes, which can be visually inspected, entering and exiting sanitary sewer and storm sewer manholes, are shown hereon based on visual inspection, field measurements, and as-built mapping, if available. If depths, sizes, and material types of pipes are shown hereon, based on as-built mapping only, they are noted accordingly, and are considered approximate. Visual inspection means what can be seen from the ground surface. Point of Beginning did not enter into manholes to complete visual inspection underground.

The locations of all underground utilities and appurtenances, unable to visually inspect and/or field measure, shown hereon are only approximate. These utilities and appurtenances will be shown based on plans obtained from utility companies or provided by the Owner/Client, and markings by utility companies and municipalities ("Diggers Hotline") and other appropriate sources (with reference as to the source of information). Additional utility lines not discovered, marked, or shown on as-built plans available to us, during the search of records and the field survey, may exist. Any contractor using the information shown hereon will be forewarned that any excavation upon this site may result in the discovery of additional underground utilities not shown hereon. POB makes no warranty of any kind, express or implied, with respect to the existing underground utilities and appurtenances, of which are unable to visually inspect and/or field measure, whether shown hereon, or not. Prior to construction, it is the contractor's responsibility to field verify locations, depths, sizes and types of underground public and private utilities or substructures within all construction limits and shall bring forward, in writing to the Engineer and/or Surveyor of Record, all discrepancies that do not align with the existing conditions as shown hereon provided.

*Diggers Hotline Ticket # 20201443397 for public utilities was ordered for this survey.

*A private utility locate was not a part of the scope of work contracted for this project and was therefore not ordered.



Office Locations:

Davenport
220 Emerson Place, Suite 301
Davenport, Iowa 52801

Milwaukee
829 S. 1st Street
Milwaukee, Wisconsin 53204
T. 414.226.0200

Sheboygan
1227A North 8th Street
PO Box 955
Sheboygan, Wisconsin 53082
T. 920.459.4200

www.brayarch.com

Point of Beginning
Civil Engineering
Land Surveying
Landscape Architecture

POB
4641 Koshong Court
Sheboygan, WI 54881
715.344.9999 (PH) / 715.344.9922 (FX)

Project Title:
School District of La Crosse
Hamilton Elementary Addition & Renovation
1111 South 7th Street
La Crosse, Wisconsin 54601

REVISIONS:

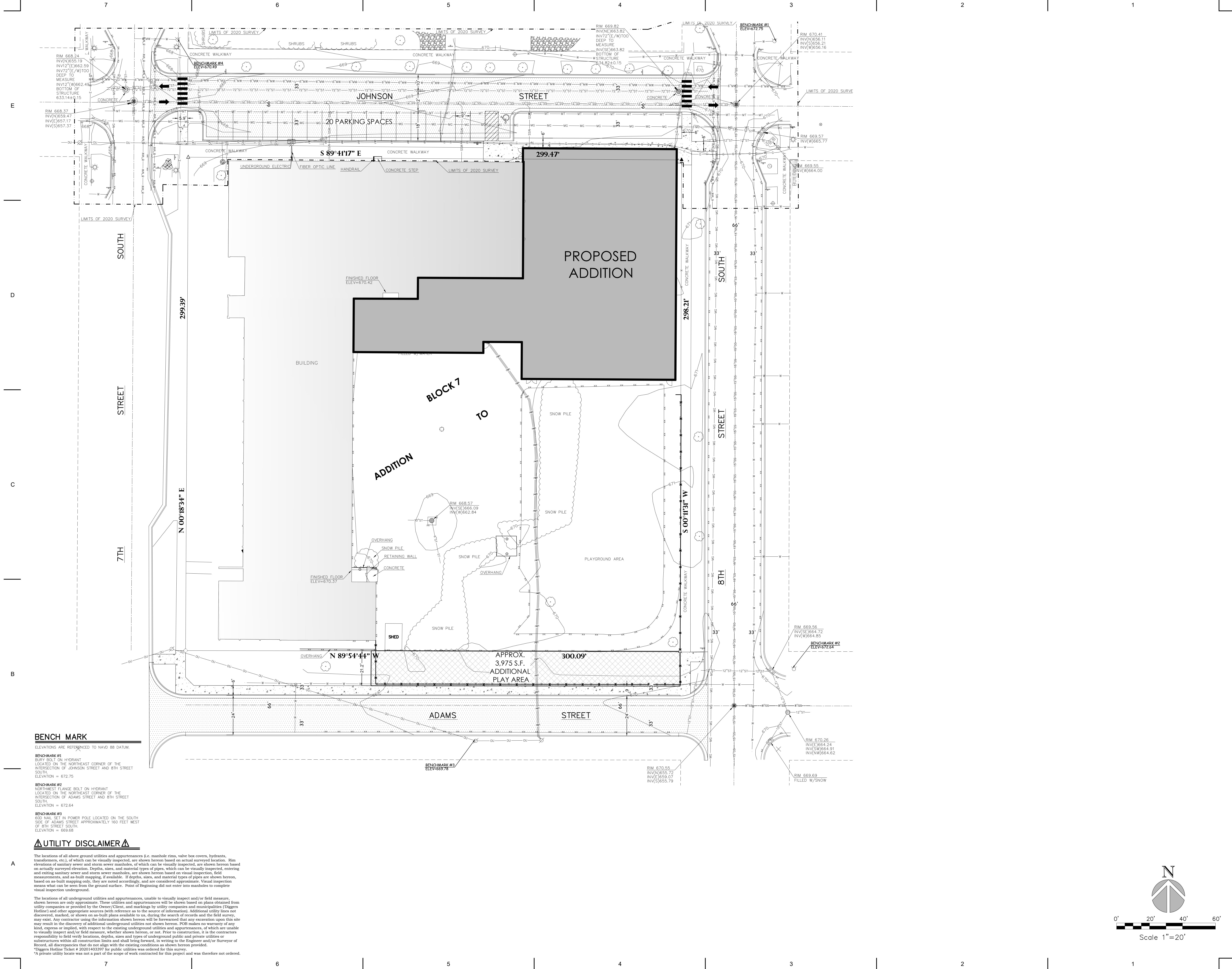
DATE	DESCRIPTION

Project Number:
3296

Issued For:
CONCEPT PLANNING

2020.04.30
Sheet Title:
CONCEPT PLAN 2

Sheet Number:
C0.0



BENCH MARK
 ELEVATIONS ARE REFERENCED TO NAVD 88 DATUM.

BENCHMARK #1
 SURF BOLT ON HYDRANT
 LOCATED ON THE NORTHEAST CORNER OF THE
 INTERSECTION OF JOHNSON STREET AND 8TH STREET
 SOUTH.
 ELEVATION = 672.75

BENCHMARK #2
 NORTHWEST FLANGE BOLT ON HYDRANT
 LOCATED ON THE NORTHEAST CORNER OF THE
 INTERSECTION OF ADAMS STREET AND 8TH STREET
 SOUTH.
 ELEVATION = 672.64

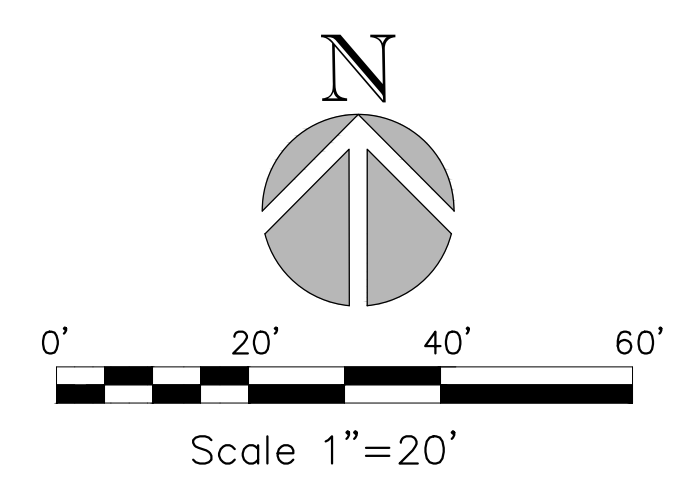
BENCHMARK #3
 EOD NAIL SET IN POWER POLE LOCATED ON THE SOUTH
 SIDE OF ADAMS STREET APPROXIMATELY 160 FEET WEST
 OF 8TH STREET SOUTH.
 ELEVATION = 669.68

UTILITY DISCLAIMER

The locations of all above ground utilities and appurtenances (i.e. manhole rims, valve box covers, hydrants, transformers, etc.), of which can be visually inspected, are shown hereon based on actual surveyed location. Rim elevations of sanitary sewer and storm sewer manholes, of which can be visually inspected, are shown hereon based on actual surveyed elevation. Depths, sizes, and material types of pipes, which can be visually inspected, entering and exiting sanitary sewer and storm sewer manholes, are shown hereon based on visual inspection, field measurements, and as-built mapping, if available. If depths, sizes, and material types of pipes are shown hereon, based on as-built mapping only, they are noted accordingly, and are considered approximate. Visual inspection means what can be seen from the ground surface. Point of Beginning did not enter into manholes to complete visual inspection underground.

The locations of all underground utilities and appurtenances, unable to visually inspect and/or field measure, shown hereon are only approximate. These utilities and appurtenances will be shown based on plans obtained from utility companies or provided by the Owner/Client, and markings by utility companies and municipalities ("Diggers Hotline") and other appropriate sources (with reference as to the source of information). Additional utility lines not discovered, marked, or shown on as-built plans available to us, during the search of records and the field survey, may exist. Any contractor using the information shown hereon will be forewarned that any excavation upon this site may result in the discovery of additional underground utilities not shown hereon. POB makes no warranty of any kind, express or implied, with respect to the existing underground utilities and appurtenances, of which are unable to visually inspect and/or field measure, whether shown hereon, or not. Prior to construction, it is the contractor's responsibility to field verify locations, depths, sizes and types of underground public and private utilities or substructures within all construction limits and shall bring forward, in writing to the Engineer and/or Surveyor of Record, all discrepancies that do not align with the existing conditions as shown hereon provided.

*Diggers Hotline Ticket # 20201443397 for public utilities was ordered for this survey.
 *A private utility locate was not a part of the scope of work contracted for this project and was therefore not ordered.



Office Locations:

Davenport
 220 Emerson Place, Suite 301
 Davenport, Iowa 52801

Milwaukee
 829 S. 1st Street
 Milwaukee, Wisconsin 53204
 T. 414.226.0200

Sheboygan
 1227A North 8th Street
 PO Box 955
 Sheboygan, Wisconsin 53082
 T. 920.459.4200

www.brayarch.com

Point of Beginning
 Civil Engineering
 Land Surveying
 Landscape Architecture

POB
 4841 Peachtree Court
 Steeles Point, WI 54881
 715.344.9999(FH) / 715.344.9922(FX)

Project Title:
 School District of La Crosse
 Hamilton Elementary Addition & Renovation
 1111 South 7th Street
 La Crosse, Wisconsin 54601

REVISIONS:

DATE	DESCRIPTION

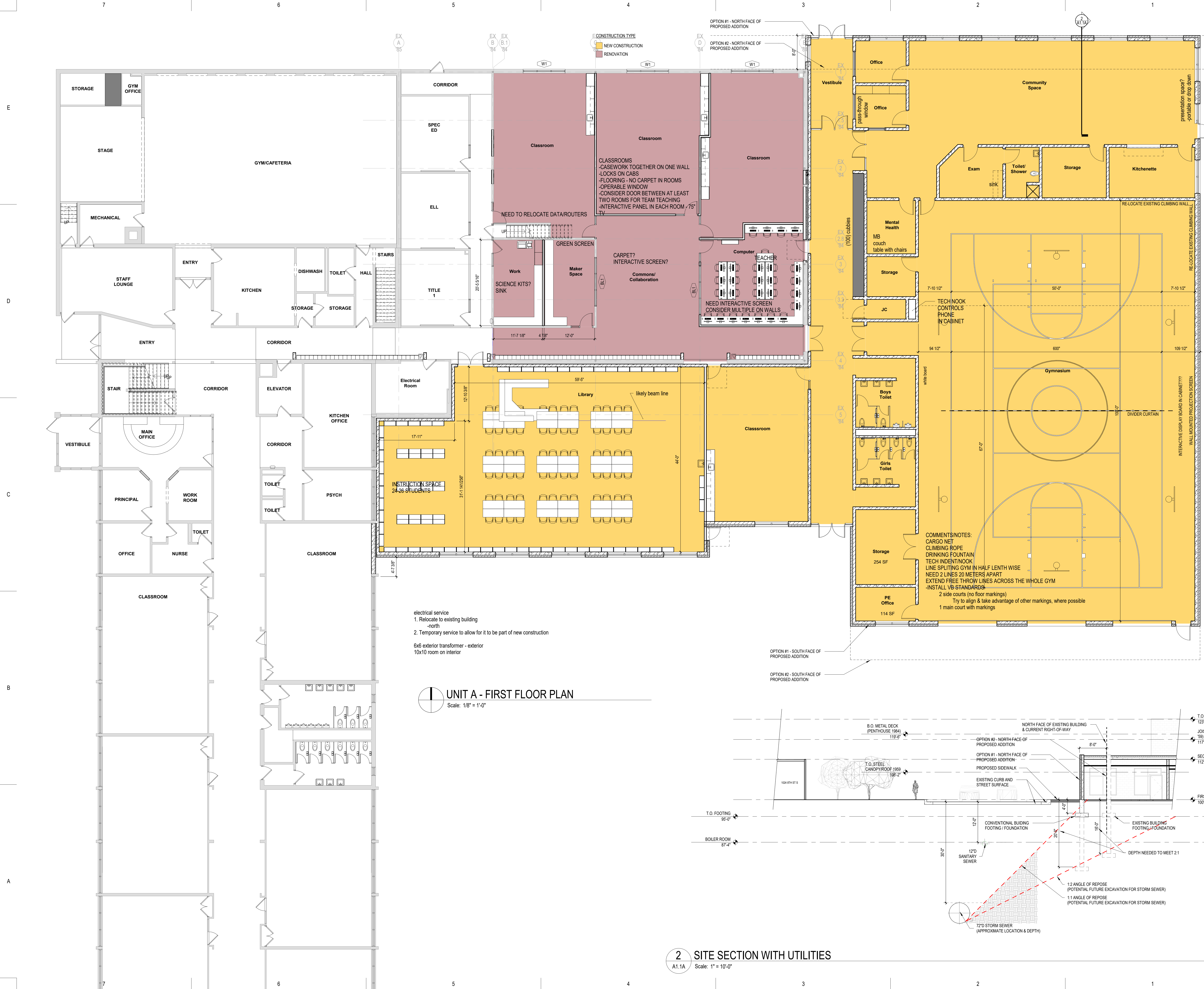
Project Number:
 3296

Issued For:
 CONCEPT
 PLANNING

2020.04.30
 Sheet Title:
 CONCEPT
 PLAN 1

Sheet Number:
 C0.0

4/30/2020 7:45:27 AM
 BM 382/3296 - LCrosse SD Hamilton Elementary 0258 - LaCrosse SD Hamilton Elementary.rvt



- electrical service
 1. Relocate to existing building -north
 2. Temporary service to allow for it to be part of new construction
- 6x6 exterior transformer - exterior
 10x10 room on interior

UNIT A - FIRST FLOOR PLAN
 Scale: 1/8" = 1'-0"

2 SITE SECTION WITH UTILITIES
 A1.1A Scale: 1" = 10'-0"



Office Locations:

Davenport
 220 Emerson Place, Suite 301
 Davenport, Iowa 52801

Milwaukee
 829 S. 1st Street
 Milwaukee, Wisconsin 53204
 T. 414.226.0200

Sheboygan
 1227A North 8th Street
 PO Box 955
 Sheboygan, Wisconsin 53082
 T. 920.459.4200

www.brayarch.com

Project Title:
 The School District of La Crosse
 Hamilton Elementary Addition & Renovation
 1111 South 7th Street
 La Crosse, Wisconsin 54601

REVISIONS:

DATE	DESCRIPTION

NOT FOR CONSTRUCTION

Project Number:
3296

Issued For:
PROGRESS SET

April 30, 2020

Sheet Title:
UNIT A - FIRST FLOOR

Sheet Number:
A1.1A