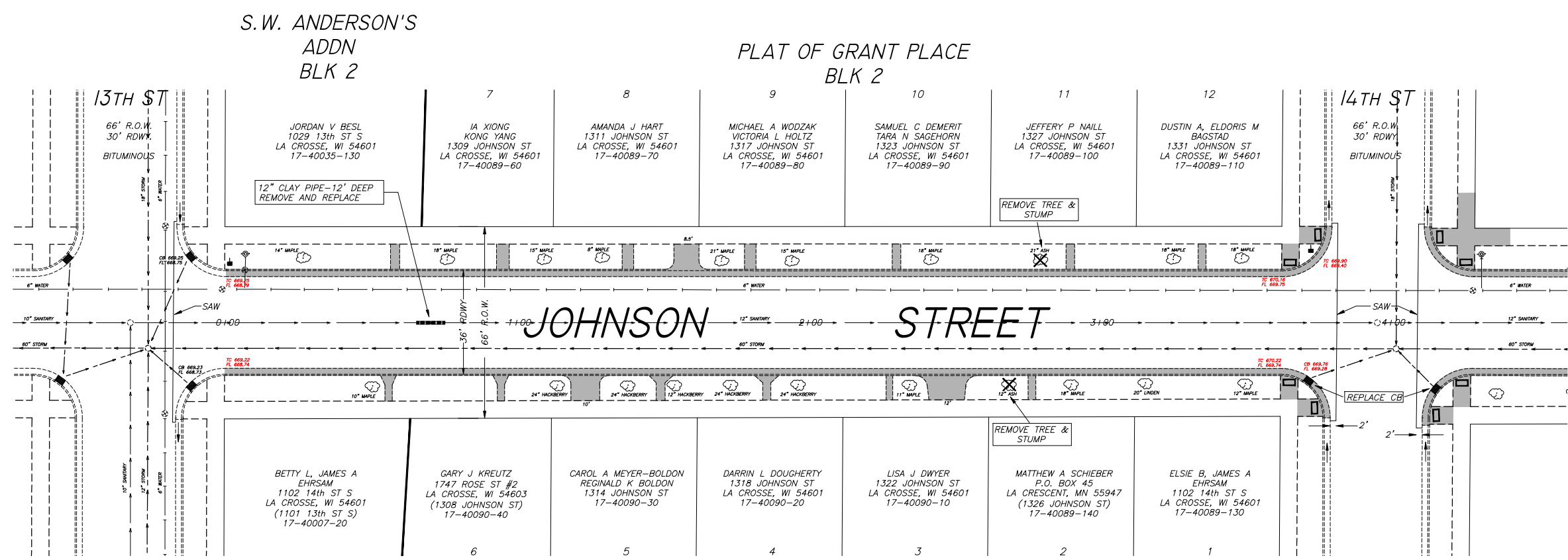




SCALE: 1"=20' H
1"= 2' V
ELEVATIONS SHOWN ARE
NAVD 88



S.W. ANDERSON'S
ADDN
BLK 2

PLAT OF GRANT PLACE
BLK 2

S.W. ANDERSON'S
ADDN
BLK 1

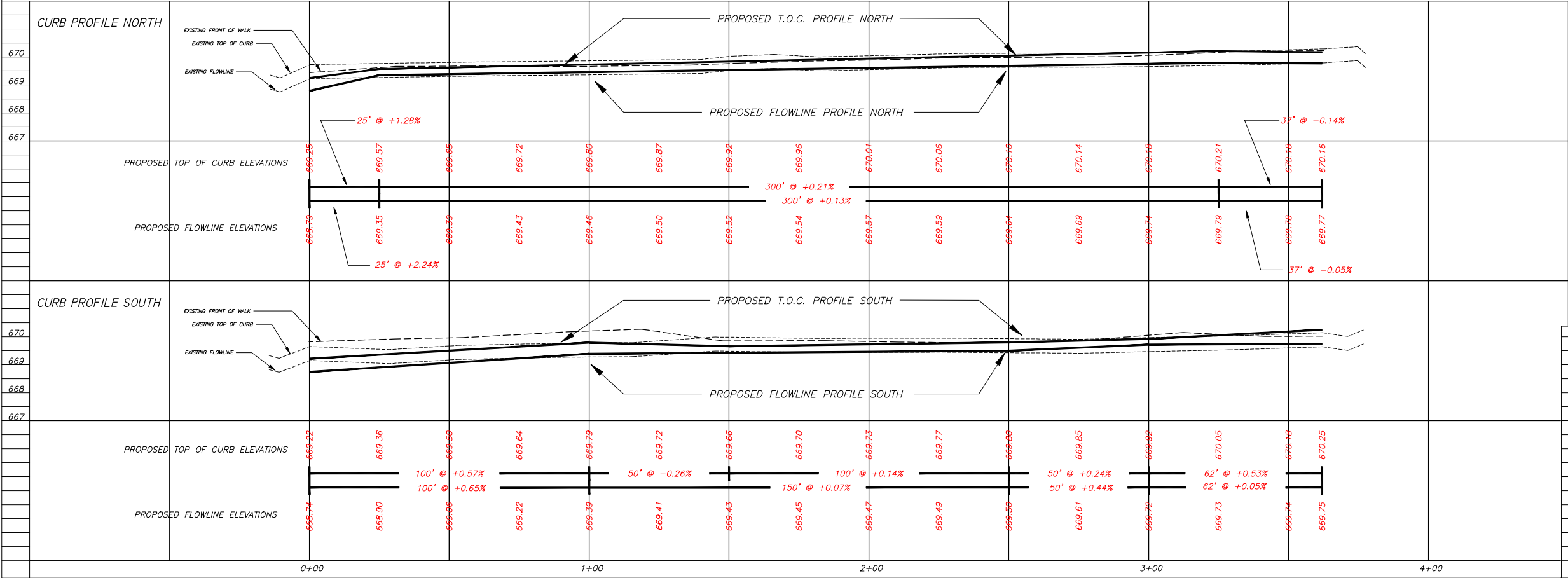
PLAT OF GRANT PLACE
BLK 3

NOTE
CONTRACTOR IS TO VERIFY LOCATION OF ALL UTILITIES
PRIOR TO ANY CONSTRUCTION

CITY OF LA CROSSE WILL PROVIDE ALL
CASTINGS AS NEEDED FOR REPLACEMENT OR
NEW STRUCTURES

BENCHMARKS TOP NUT OF HYDRANT	
13th ST & JOHNSON ST	672.90
14th ST & JOHNSON ST	673.76

ESTABLISHED GRADE	
13th ST (NE) & JOHNSON ST	668.92
13th ST (SE) & JOHNSON ST	668.87
14th ST & JOHNSON ST	669.93



EDF #	17-001	DWG NAME	johnson_13-16.dwg
PROJECT No.	2017 CURB & GUTTER REPLACEMENT PROJECTS		
LOCATION	JOHNSON STREET 13th ST to 16th ST		
RESOLUTION	DATE		
ENGINEERING DEPT. City of La Crosse, Wis.			
FIELD BOOK	SURVEYED	BY	DATE
NUMBER	DRAWN	BY	DATE
PAGE	CHECKED	BY	DATE
	DESIGNED	BY	DATE
	REVISIONS	BY	DATE
SHEET NO.	7	TOTAL SHEETS	31