

NORTH
1 BUILDING PLAN
 1" = 20'-0"

WAINSCOT LEGEND	
	6'-0" HIGH 3/4" CDX PLYWOOD WAINSCOT
	6'-0" HIGH 24 GAUGE PREPARED WHITE METAL RIBBED WALL PANEL OVER INSULATION UNLESS NOTED OTHERWISE (REQUIRED ONLY WHEN DISTRIBUTION AREA IS HEATED.)
	48" HIGH 3/4" CDX PLYWOOD WAINSCOT AT NON-MASONRY CONSTRUCTION

- PERIMETER WALL AND FOUNDATIONS AT GRADE AREAS SHALL BE 6" ABOVE NOMINAL FIN. FL. ELEVATIONS. REFER 03300-001
- CONVEYOR EQUIPMENT TO BE FURNISHED AND INSTALLED BY TENANT.
- DISTRIBUTION AREA (AND VEHICLE MAINTENANCE GARAGE, IF ANY) WILL BE HEATED.
- REFER TO ELEVATIONS TO VERIFY DOOR INSTALLATION THIS PHASE.
- IF A SPRINKLER SYSTEM IS REQUIRED BY CODE, DISTRIBUTION AREA (AND VEHICLE MAINTENANCE GARAGE, IF ANY) WILL RECEIVE A WET TYPE SPRINKLER SYSTEM.

NOT FOR CONSTRUCTION
 This is a progress drawing intended for information only, and shall not be used for construction purposes. The Construction Documents, prepared by others shall address all applicable local, state, federal codes, and regulations. For FXG leased facilities the Construction Documents shall be the responsibility of the Lessor/Lessor's Agent. For FXG owned facilities the Construction Documents shall be the responsibility of the Architect/Engineer of Record.

Rev.	Date	Revised Items	Dr.	DE
A	10/4/18	BID SET.		

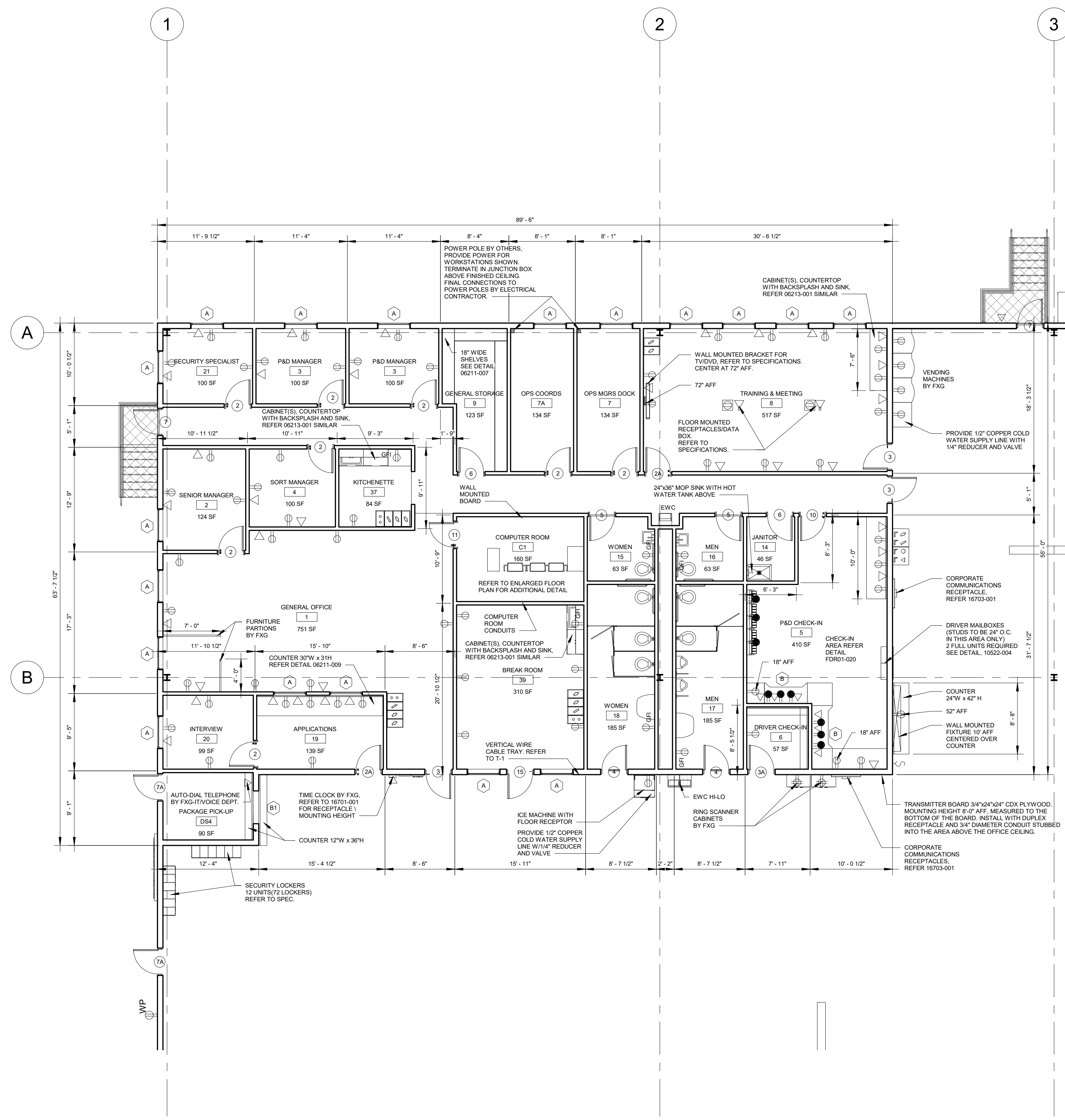


FACILITIES & MATERIAL
 HANDLING SYSTEMS
 1000 FedEx Drive
 Moon Township, PA 15108
 412-269-1000

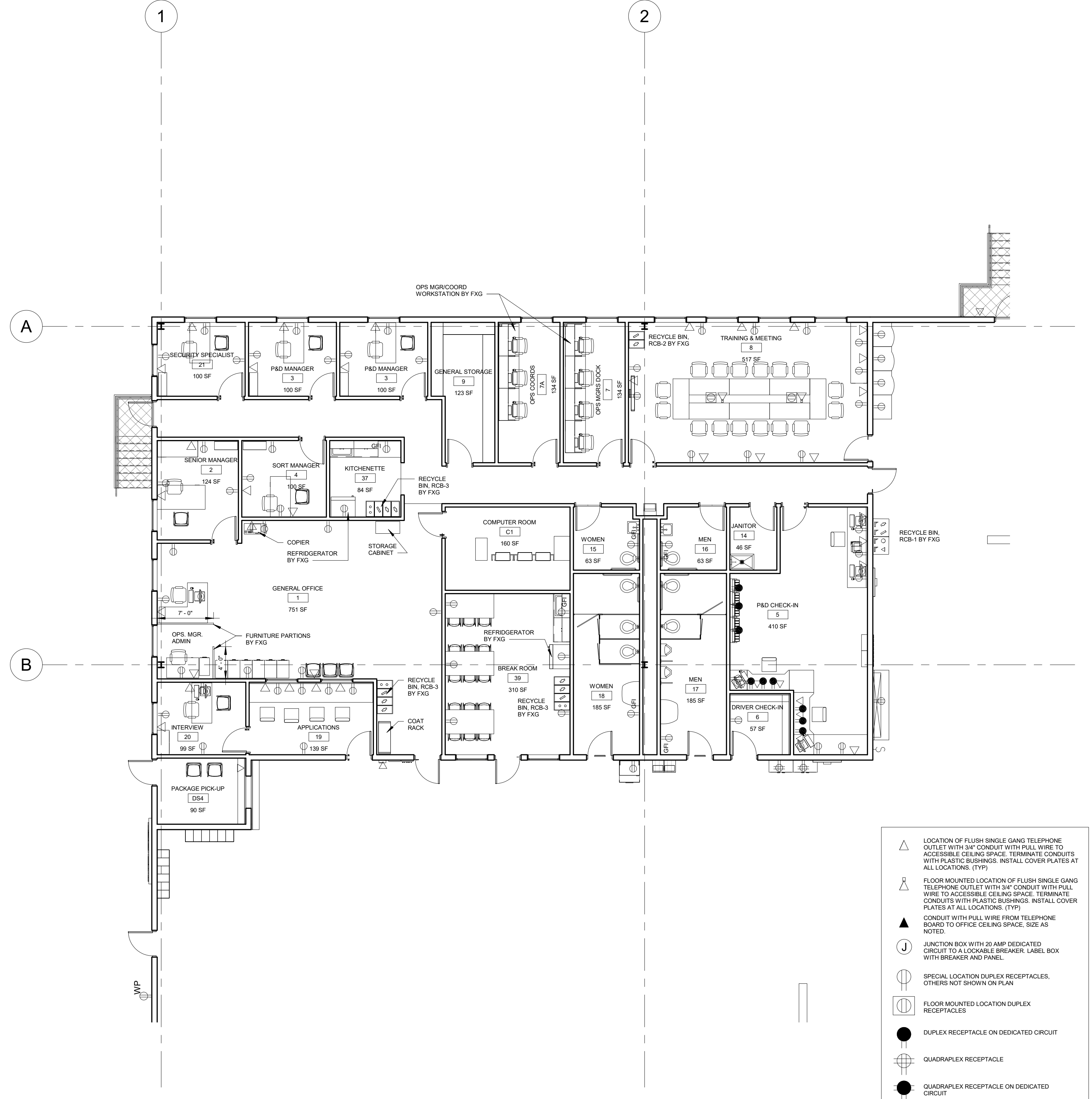
Location: **LA CROSSE**
 Project: **RELOCATION**
 Title: **BUILDING PLAN**
 Scale: 1"=20'-0"
 Date Drawn: 7/9/18
 Design Eng: RJK
 Checked By: RJK
 File No: 546R20F002

State or Province: **WI**
 Address: **SOUTH 16 LA CROSSE, WI**

Sheet Number: **A-1**
 Drawing Number: **546-F-031**
 Revision: **A**



1 OFFICE PLAN
1/8" = 1'-0"



2 OFFICE FURNITURE PLAN
1/8" = 1'-0"

Recycle Bins By FXG	
Type	Count
RCB-1	2
RCB-2	1
RCB-3	3

- NOTES:
- ROUND ALL COUNTERS 1" RADIUS.
 - QUARTER ROUND WOOD MOLDING AT BACK OF ALL COUNTER TOPS. PAINTED TO MATCH WALLS.
 - PROVIDE 2 1/2" DIA. HOLES WITH GROMMETS IN ALL COUNTERS ABOVE ALL RECEPTACLES EXCEPT 18" AFF. RECEPTACLES IN P&D CHECK-IN.

- △ LOCATION OF FLUSH SINGLE GANG TELEPHONE OUTLET WITH 3/4" CONDUIT WITH PULL WIRE TO ACCESSIBLE CEILING SPACE. TERMINATE CONDUITS WITH PLASTIC BUSHINGS. INSTALL COVER PLATES AT ALL LOCATIONS. (TYP)
- ▽ FLOOR MOUNTED LOCATION OF FLUSH SINGLE GANG TELEPHONE OUTLET WITH 3/4" CONDUIT WITH PULL WIRE TO ACCESSIBLE CEILING SPACE. TERMINATE CONDUITS WITH PLASTIC BUSHINGS. INSTALL COVER PLATES AT ALL LOCATIONS. (TYP)
- ▲ CONDUIT WITH PULL WIRE FROM TELEPHONE BOARD TO OFFICE CEILING SPACE. SIZE AS NOTED.
- J JUNCTION BOX WITH 20 AMP DEDICATED CIRCUIT TO A LOCKABLE BREAKER. LABEL BOX WITH BREAKER AND PANEL.
- SPECIAL LOCATION DUPLEX RECEPTACLES. OTHERS NOT SHOWN ON PLAN.
- FLOOR MOUNTED LOCATION DUPLEX RECEPTACLES.
- DUPLEX RECEPTACLE ON DEDICATED CIRCUIT.
- ⊕ QUADRUPLEX RECEPTACLE.
- QUADRUPLEX RECEPTACLE ON DEDICATED CIRCUIT.
- 220 VOLT RECEPTACLE ON DEDICATED CIRCUIT.
- GFI GROUND FAULT INTERRUPT DUPLEX RECEPTACLES.
- WEATHER PROOF RECEPTACLES.
- WP NEW DOOR REFER TO DOOR SCHEDULE.
- X NEW WINDOW REFER TO WINDOW SCHEDULE.
- X ROOM FINISH REFERENCE NUMBER. REFER TO ROOM SCHEDULE.
- WALL LIGHT SWITCH.
- POWER POLE BY OTHERS. PROVIDE POWER FOR WORKSTATIONS SHOWN. TERMINATE IN JUNCTION BOX ABOVE FINISH CEILING. FINAL CONNECTIONS TO POWER POLES BY ELECTRICAL CONTRACTOR.
- WELDING OUTLET 30 AMP THREE PHASE 480 VOLT. NEMA TYPE 17-30.
- WELDING OUTLET 30 AMP THREE PHASE 240 VOLT. NEMA TYPE 16-30.

NOT FOR CONSTRUCTION
This is a progress drawing intended for information only, and shall not be used for construction purposes. The Construction Documents, prepared by others shall address all applicable local, state, federal codes, and regulations. For FXG leased facilities the Construction Documents shall be the responsibility of the Lessor/Lessor's Agent. For FXG owned facilities the Construction Documents shall be the responsibility of the Architect/Engineer of Record.

Rev.	Date	BID SET.	Revised Items	Dr.	DE
A	10/4/18				



FACILITIES & MATERIAL
HANDLING SYSTEMS
1000 FedEx Drive
Moon Township, PA 15108
412-269-1000

Location: LA CROSSE
Project: CY20 RELOCATION
Title: OFFICE PLAN
Scale: 1/8"=1'-0"
Date Drawn: 7/9/18
Design Eng: RJK
Checked By: RJK
File No: 546R20F002

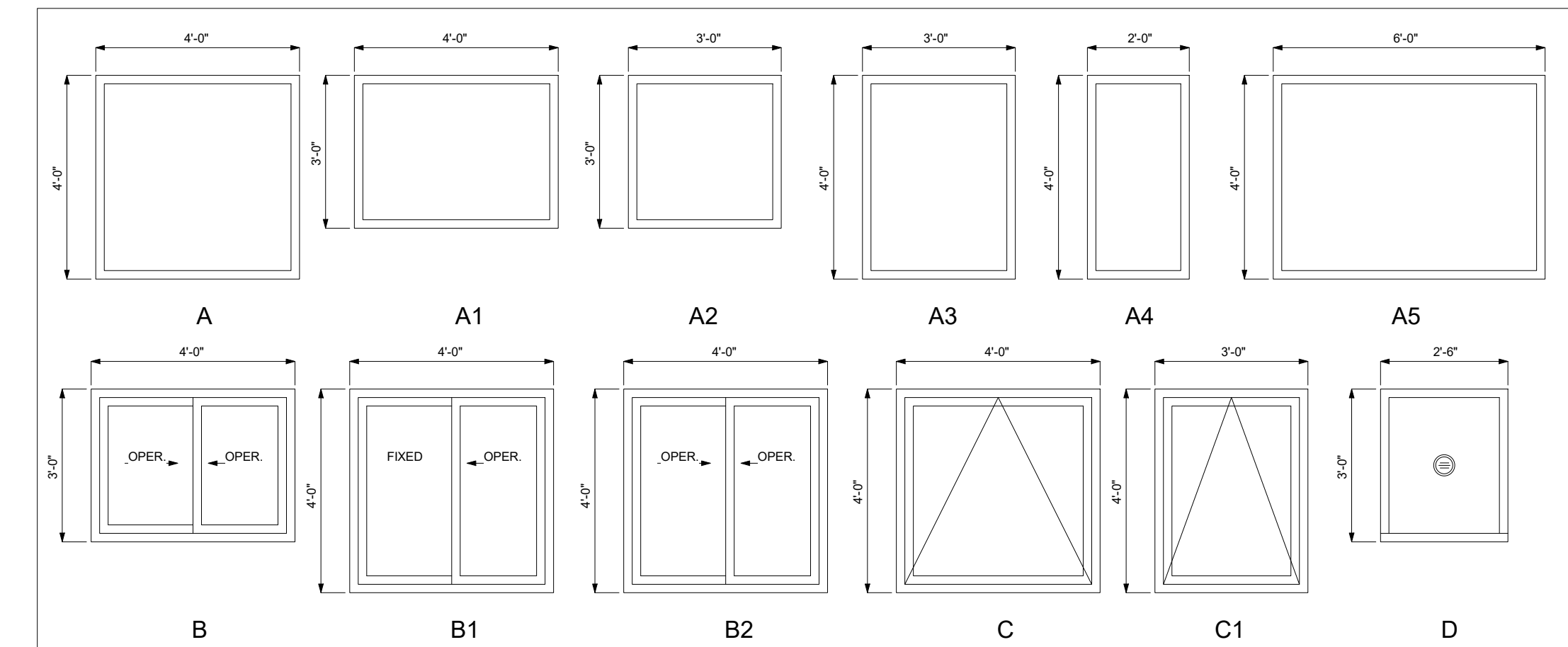
Address: SOUTH 16
LA CROSSE, WI

State or Province: WI
Sheet Number: A-2
Drawing Number: 546-F-032
Revision: A

Door Schedule							Window Schedule							
Number	Count	Size	Type	Material	Frame Matl	Hardware Set	Remarks	Number	Count	Type	Size	Material	Sill Height	Remarks
2	8	3'-0" x 7'-0" x 1 3/4"	C	HM	HM	7	.	A	18	Fixed	4'-0" x 4'-0"	Aluminum	3'-0" AFF	.
2A	2	3'-0" x 7'-0" x 1 3/4"	C	HM	HM	13	.	B	2	Horizontal Sliding	4'-0" x 3'-0"	Aluminum	3'-6" AFF	Align sill with top of counter
3	3	3'-0" x 7'-0" x 1 3/4"	A	HM	HM	16	Doors from office area to warehouse area are considered exterior doors.	B1	1	Horizontal Sliding	4'-0" x 4'-0"	Aluminum	3'-0" AFF	With privacy glass. Right hand pane principal pane. Align sill with top of counter. Install to view into package pick-up room.
3A	1	3'-0" x 7'-0" x 1 3/4"	A	HM	HM	6	Doors from office area to warehouse area are considered exterior doors.							
4	2	3'-0" x 7'-0" x 1 3/4"	B2	HM	HM	4	Louver, as required by design							
5	2	3'-0" x 7'-0" x 1 3/4"	B3	HM	HM	5	.							
6	2	3'-0" x 7'-0" x 1 3/4"	B1	HM	HM	3	Provide security observation port, mount port to observe from room interior.							
7	8	3'-0" x 7'-0" x 1 3/4"	B1	HM	HM	12	Requires detex door alarm, refer to specifications.							
7A	2	3'-0" x 7'-0" x 1 3/4"	A	HM	HM	2	.							
8A	21	8'-2" x 9'-1"	D	OH Steel	Metal	.	.							
8B	4	14'-2" x 16'-1"	D	OH Steel	Metal	.	Motor Operated							
10	1	3'-0" x 7'-0" x 1 3/4"	C	HM	HM	9	.							
11	1	3'-0" x 7'-0" x 1 3/4"	A	HM	HM	18	.							
15	1	3'-0" x 7'-0" x 1 3/4"	C	HM	HM	4A	.							

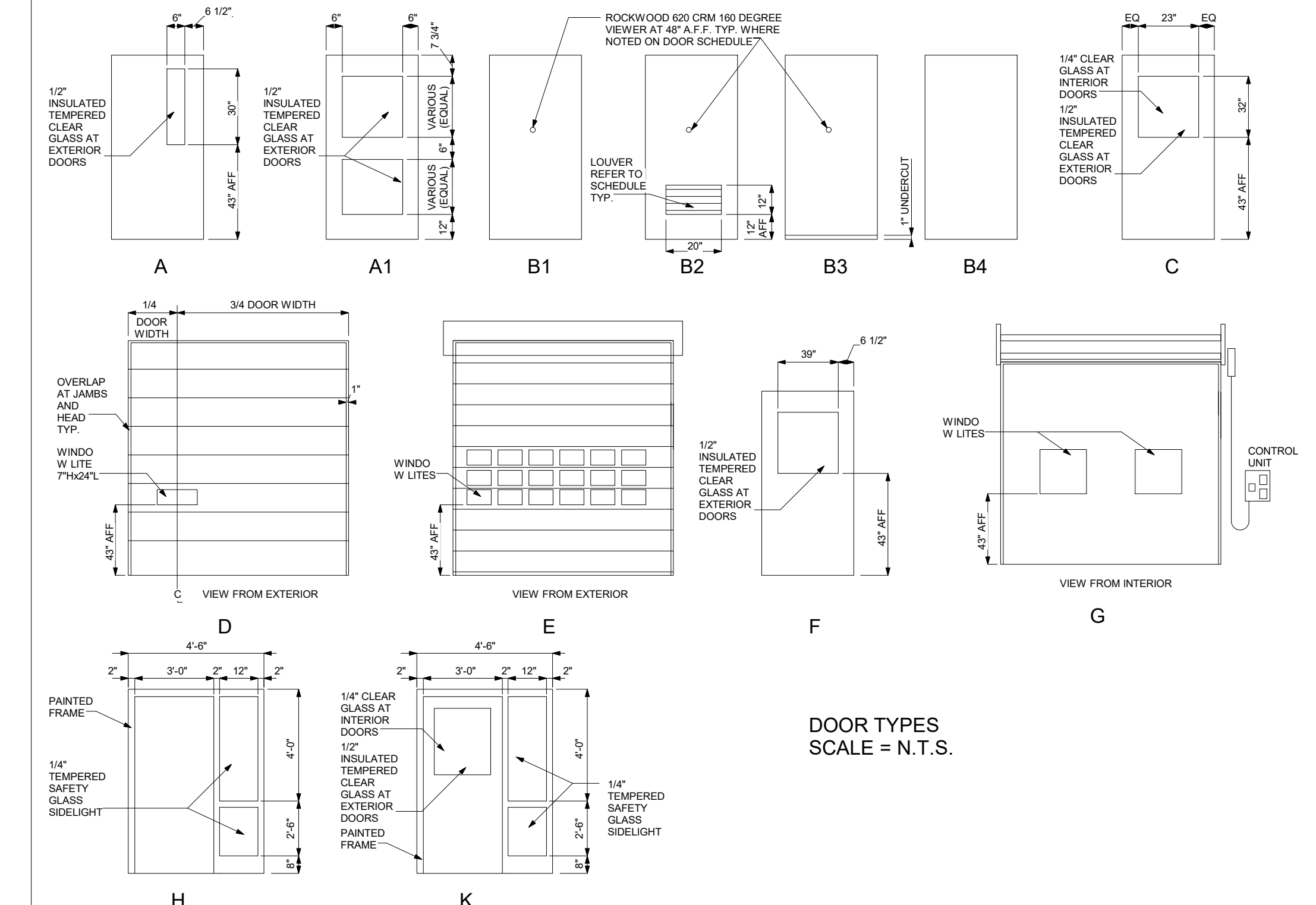
Room Schedule	
Number	Name

1	GENERAL OFFICE
2	SENIOR MANAGER
3	P&D MANAGER
3	P&D MANAGER
4	SORT MANAGER
5	P&D CHECK-IN
6	DRIVER CHECK-IN
7	OPS MGRS DOCK
7A	OPS COORDS
8	TRAINING & MEETING
9	GENERAL STORAGE
14	JANITOR
15	WOMEN
16	MEN
17	MEN
18	WOMEN
19	APPLICATIONS
20	INTERVIEW
21	SECURITY SPECIALIST
37	KITCHENETTE
39	BREAK ROOM
C1	COMPUTER ROOM
DA1	DISTRIBUTION AREA
DS4	PACKAGE PICK-UP



WINDOW TYPES
SCALE = N.T.S.

WINDOW NOTES:
1. WINDOWS INDICATED IN ROOM PL1 (PURPLE LOUNGE) LEADING TO THE EXTERIOR OF THE BUILDING ARE SHOWN WITH SCHEDULED WINDOW TYPE UNITS FOR ILLUSTRATIVE PURPOSES. INSTALLATION SHALL BE A STOREFRONT WINDOW DOOR SIMILAR AND EQUAL IN QUALITY TO KAWNEER TRIFAB 601UT FRAMING WITH INSULATED GLASS.



DOOR TYPES
SCALE = N.T.S.

NOT FOR CONSTRUCTION
This is a progress drawing intended for information only, and shall not be used for construction purposes. The Construction Documents, prepared by others shall address all applicable local, state, federal codes, and regulations. For FXG leased facilities the Construction Documents shall be the responsibility of the Lessor/Lessor's Agent. For FXG owned facilities the Construction Documents shall be the responsibility of the Architect/Engineer of Record.

Rev.	Date	Revised Items	Dr.	DE
A	10/4/18	BD SET.	BUI	



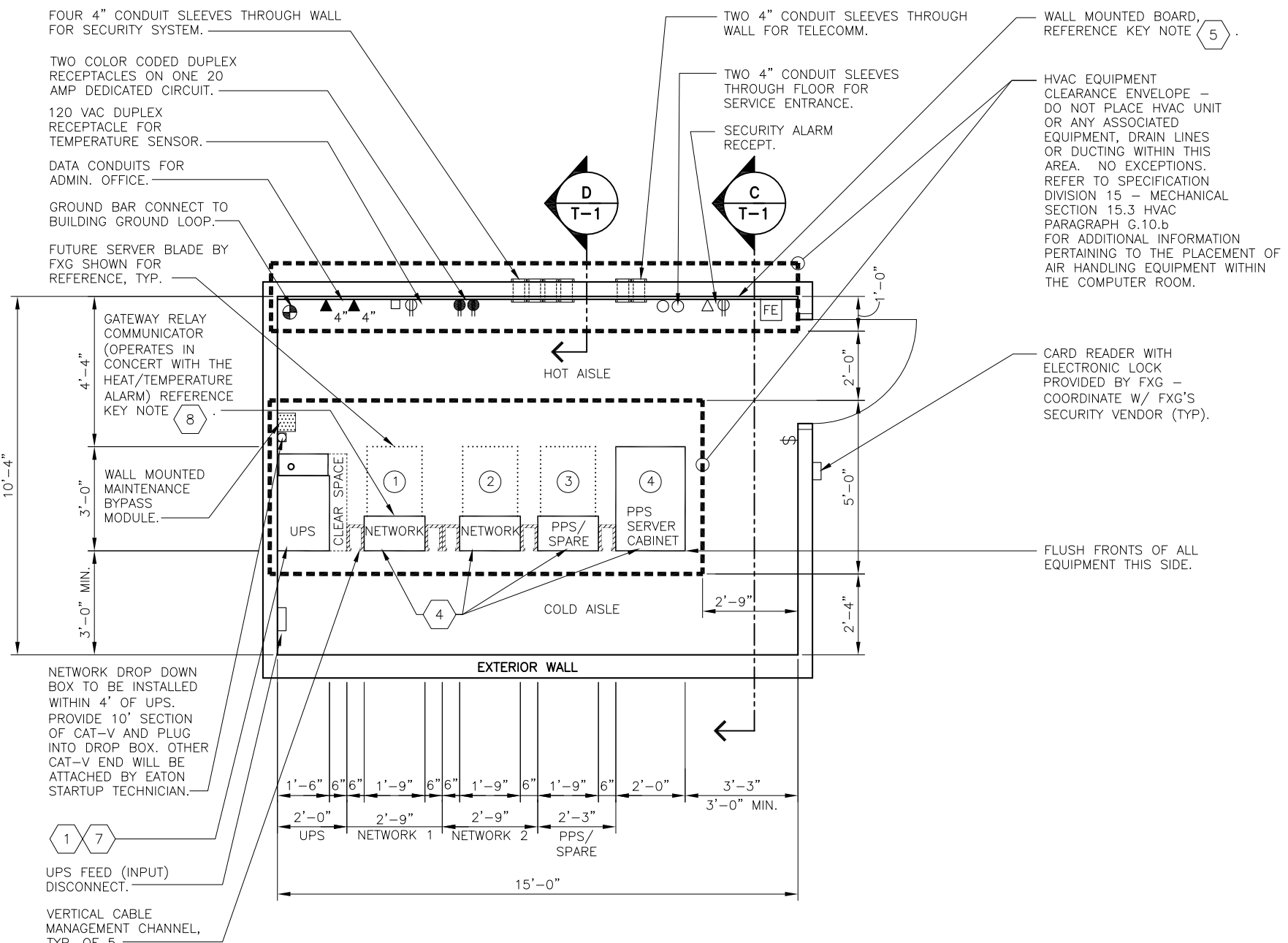
FACILITIES & MATERIAL
HANDLING SYSTEMS
1000 FedEx Drive
Moon Township, PA 15108
412-269-1000

Location:	LA CROSSE	State or Province:	WI
Title:	CY20 RELOCATION SCHEDULES	Project:	RELOCATION
Scale:	NTS	Drawn By:	BUI
Date Drawn:	7/9/18	Checked By:	RJK
Design Eng:	RJK	File No:	546R20F002
Address:	SOUTH 16 LA CROSSE, WI		

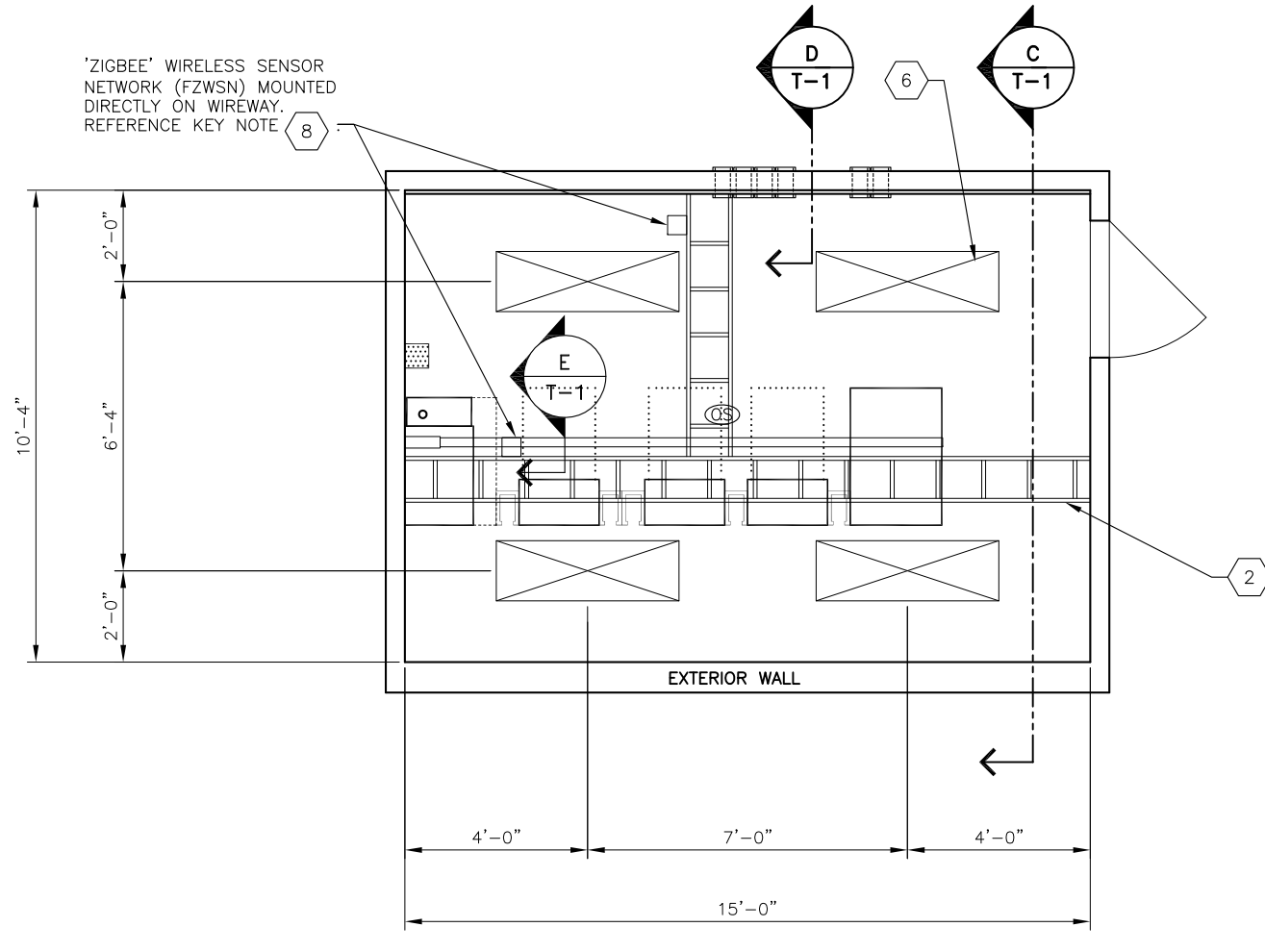
Sheet Number:	A-3
Drawing Number:	546-F-033
Revision:	A

This drawing is the Proprietary Property of FEDEX GROUND PACKAGE SYSTEM, Inc. and must not be used in any other circumstance except in consultation with our work.

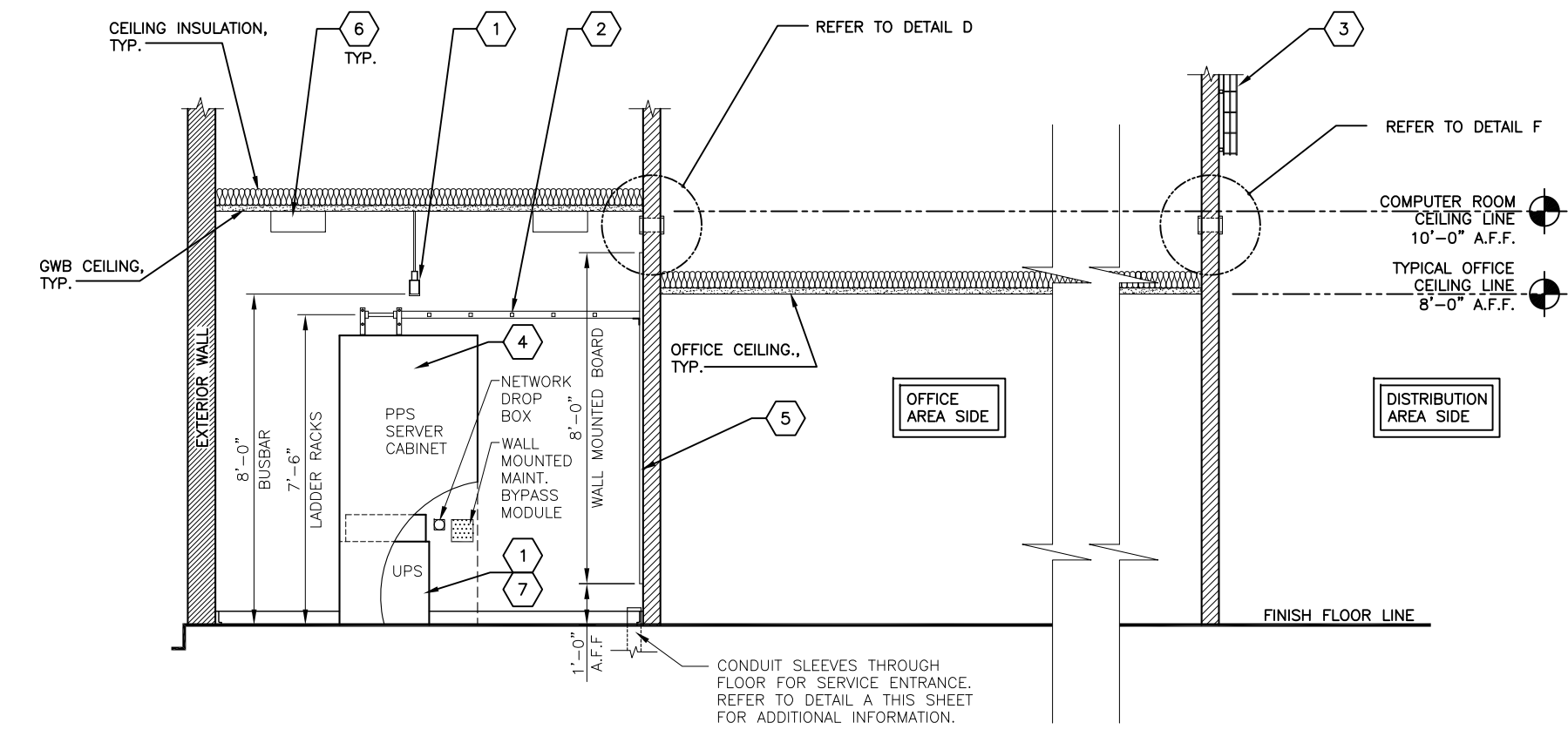
ALL EQUIPMENT / HARDWARE SHOWN ON THIS DRAWING MUST BE INSTALLED EXACTLY AS SHOWN. HOT/COLD AISLE SIDES MIGHT DIFFER, REFER TO SHEET A-2 FOR ACTUAL ROOM ORIENTATION.



A FLOOR PLAN - MANUAL STATION 2-4 VAN LINES
 SCALE: 1/4"=1'-0"
 FLOOR SPACE = 155 SF
 (FOR REFERENCE ONLY)
 (REFER TO OFFICE PLAN FOR ACTUAL DOOR LOCATION)



B REFLECTED CEILING PLAN
 SCALE: 1/4"=1'-0"
 (FOR REFERENCE ONLY)

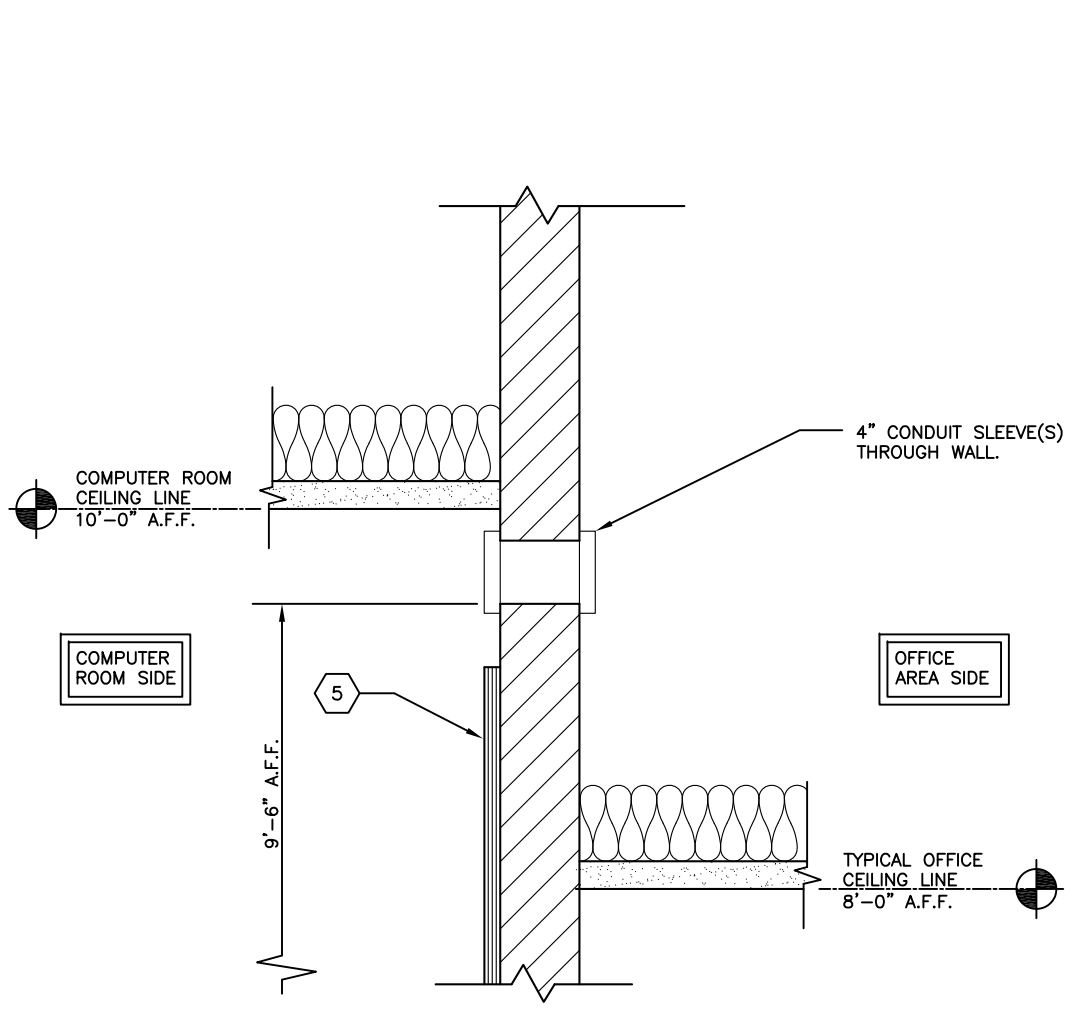


C SECTION
 SCALE: 1/4"=1'-0"
 (FOR REFERENCE ONLY)

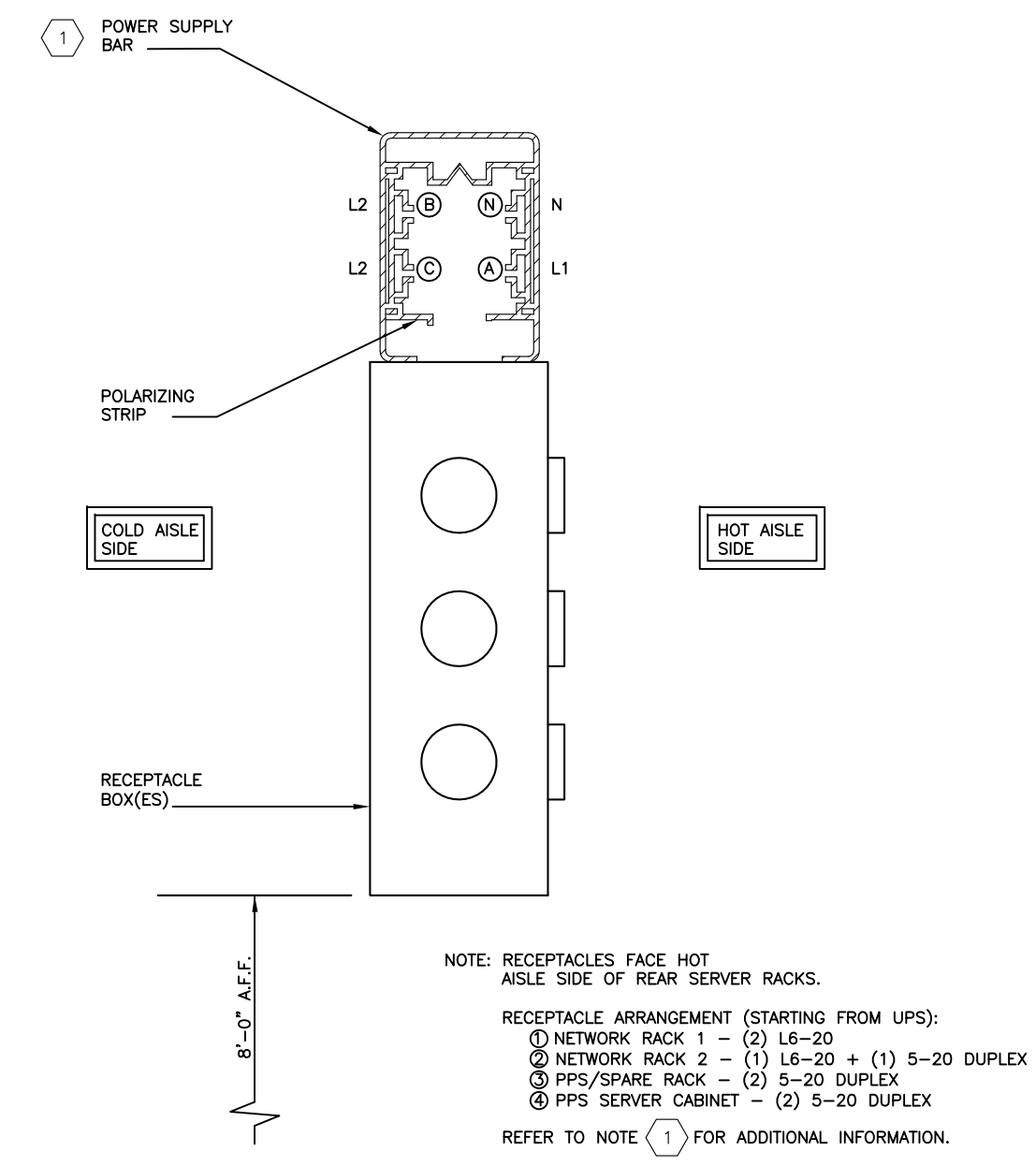
- KEY NOTES:**
- POWERWARE 6 KVA SINGLE PHASE UPS UNIT.
 PART NUMBER: PW9170 - SE - SLEW 2X5 - GPP - FXG
 PART NUMBER INCLUDES THE FOLLOWING COMPONENTS:
 MAINTENANCE BYPASS MODULE: MBB TYPE, PART NUMBER SPECIMEN 1A
 POWERWARE PW9170, 6 KVA, 208-270V, 208-240 V. OUTPUT WITH THREE BATTERY STRINGS.
 NETWORK COMMUNICATIONS CARD: ConnectUPS-BD
 ENVIRONMENTAL MONITOR PROBE (EMP): MODEL # 42R4217
 STARLINE BUSWAY, TWO SECTIONS AT 5'-0" EACH.
 PROVIDE FIVE (5) DUPLEX 5-20 RECEPTACLES FOR NETWORK SERVICES AND OTHER USE. DO NOT USE BLUE PHASE**
 PROVIDE THREE (3) 16-20 RECEPTACLES FOR NETWORK SERVICES USE. DO NOT USE BLUE PHASE**
 END CAPS, END POWER FEED, MOUNTING BOLTS, SNMP/WEB ADAPTER & ENVIRONMENTAL MONITOR POWERWARE, AND ALL COMPONENTS REQUIRED FOR A COMPLETE INSTALLATION.
 START UP SERVICES AND WARRANTY.
 APPROVED SUPPLIER:
 RM STOOFF AND ASSOCIATES
 CONTACT: JAMES STOOFF, 412-367-9006
 FURNISHED AND INSTALLED BY THE LESSOR/LESSOR'S AGENT
 - LADDER RACKS, 12" WIDTH, BY DAMAC PRODUCTS, INC. MANUFACTURER'S STANDARD BLACK FINISH, LENGTHS AS REQUIRED BY DESIGN. FURNISHED AND INSTALLED BY FXG.
 - 4" DEEP (3" CABLE FILL) X 12" WIDE VERTICAL WIRE CABLE TRAY.
 PART NUMBER: FT 4X12X10 BY COOPER B-LINE OR FXG APPROVED EQUAL.
 SUPPORT VERTICAL WIRE CABLE TRAY WITH UNI-STRUT MEMBERS AS REQUIRED BY DESIGN.
 VERTICAL WIRE CABLE TRAY INSTALLATION SHALL BEGIN AT 12" ABOVE THE 4" CONDUIT SLEEVES AND SHALL BE INSTALLED VERTICALLY UP TO, AND ATTACHED TO, THE BUILDING ROOF SUPPORT STEEL.
 - RACKS AND SERVERS FURNISHED AND INSTALLED BY FXG.
 - ALL PLYWOOD BACKBOARDS SHALL BE 3/4"x48"x96" FIRE RESISTANT A/C RATED PLYWOOD MOUNTED 1'-0" AFF. MOUNT WITH 1/4" SIDE FACING ROOM. PAINT BOTH SIDES AND ALL EDGES OF PLYWOOD WITH A MINIMUM OF 2 COATS APPLIED PER MANUFACTURER'S RECOMMENDATIONS. REFER TO SPECIFICATIONS FOR PAINT COLOR. PAINTING SHALL BE COMPLETED PRIOR TO THE INSTALLATION OF ANY COMMUNICATIONS HARDWARE OR EQUIPMENT. COVER THE LENGTH OF WALL SHOWN. MOUNT 8" DIMENSION VERTICALLY (TYP.). FURNISHED AND INSTALLED BY LESSOR/LESSOR'S AGENT.
 - CEILING MOUNTED LIGHT FIXTURE, REFER TO SPECIFICATIONS.
 - UPS START-UP:
 1. LESSOR/LESSOR'S AGENT PURCHASES SPECIFIED UPS PART NUMBERS FROM APPROVED EATON SUPPLIER.
 2. LESSOR/LESSOR'S AGENT INSTALLS UPS, MAINTENANCE BYPASS SWITCH, SNMP AND EMP PER MANUFACTURER'S INSTRUCTION.
 3. LESSOR/LESSOR'S AGENT CONTACTS FXG FACILITY PROJECT ENGINEER FOR NETWORK ADDRESSES (IP, GATEWAY, SUBNET MASK).
 4. LESSOR/LESSOR'S AGENT COMPLETES EATON'S "UPS AND POI PRE-STARTUP CHECKLIST". CHECKLIST IS 2 PAGES TOTAL. INCLUDE THE FOLLOWING ON CHECKLIST FOR EATON START-UP TECHNICIAN:
 A. IP, GATEWAY, AND SUBNET MASK ADDRESSES.
 B. ELECTRICIAN AND DEVELOPER CONTACT INFO. CONTACT IF ISSUES.
 C. SNMP TRAPS.

1	SNMP	COMMUNITY STRING	IP/HOSTNAME
1	SNMPV1	SPECIATOR	10.72.15.45
2	SNMPV1	SPECIATOR	192.168.173.96

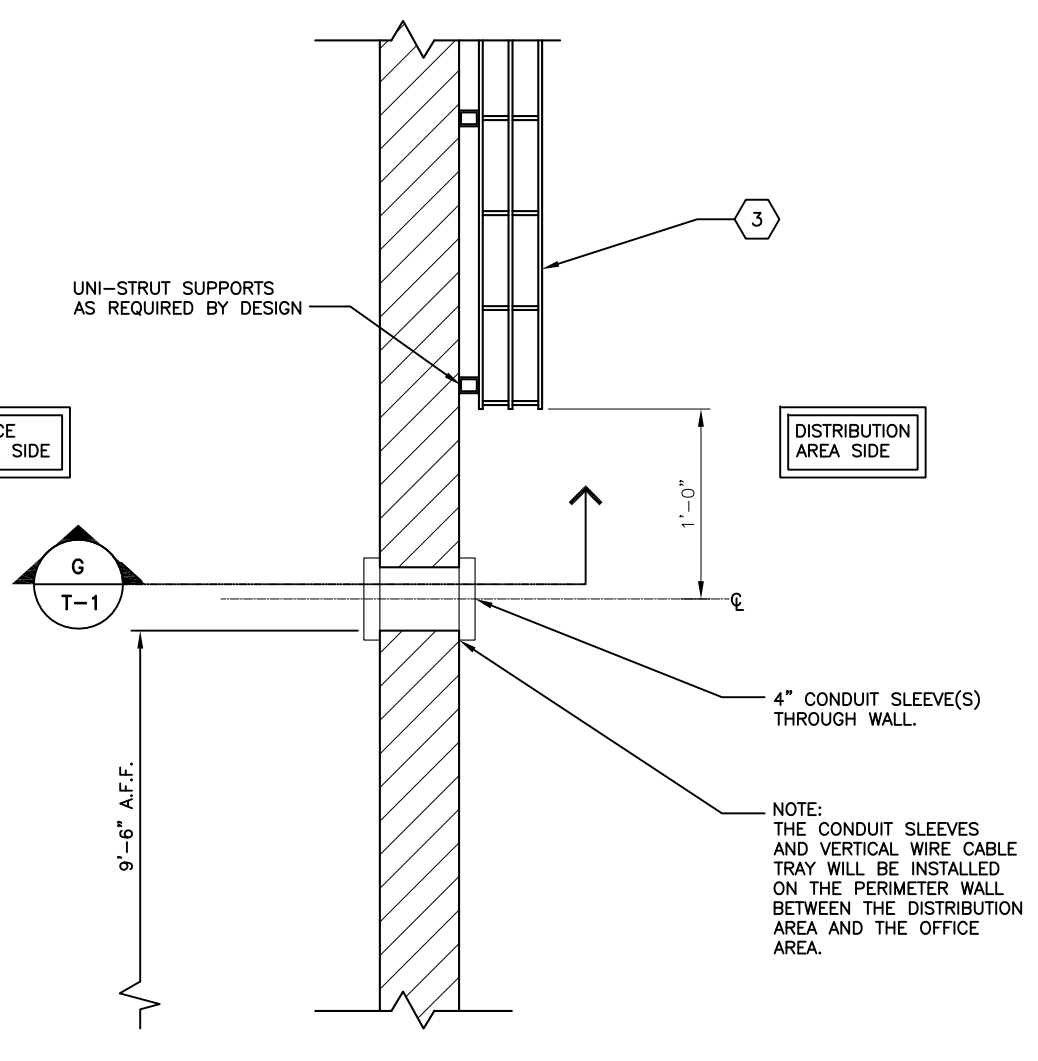
 5. LESSOR/LESSOR'S AGENT FORWARDS COMPLETED "UPS AND POI PRE-STARTUP CHECKLIST" TO EATON APPROVED SUPPLIER.
 6. EATON APPROVED SUPPLIER SENDS EATON STARTUP TECHNICIAN TO SITE FOR UPS COMMISSIONING.
 7. EATON STARTUP TECHNICIAN APPLIES POWER TO UPS, SETS PARAMETERS, INSTALLS NETWORK IP ADDRESSES, SETS UP SNMP TRAPS AND CONNECTS UPS TO FXG NETWORK.
 8. LESSOR/LESSOR'S AGENT NOTIFIES FXG FACILITY PROJECT ENGINEER THAT UPS HAS BEEN COMMISSIONED.
 9. LESSOR/LESSOR'S AGENT CONTACTS FXG FACILITY PROJECT ENGINEER AND CONFIRMS UPS IS COMMUNICATING ON FXG NETWORK. NETWORK MAY NOT BE AVAILABLE UNTIL WEEK OF START-UP.
 (8) ITEM(S) FURNISHED AND INSTALLED BY FEDEX SERVICES AND NETWORK SERVICES.



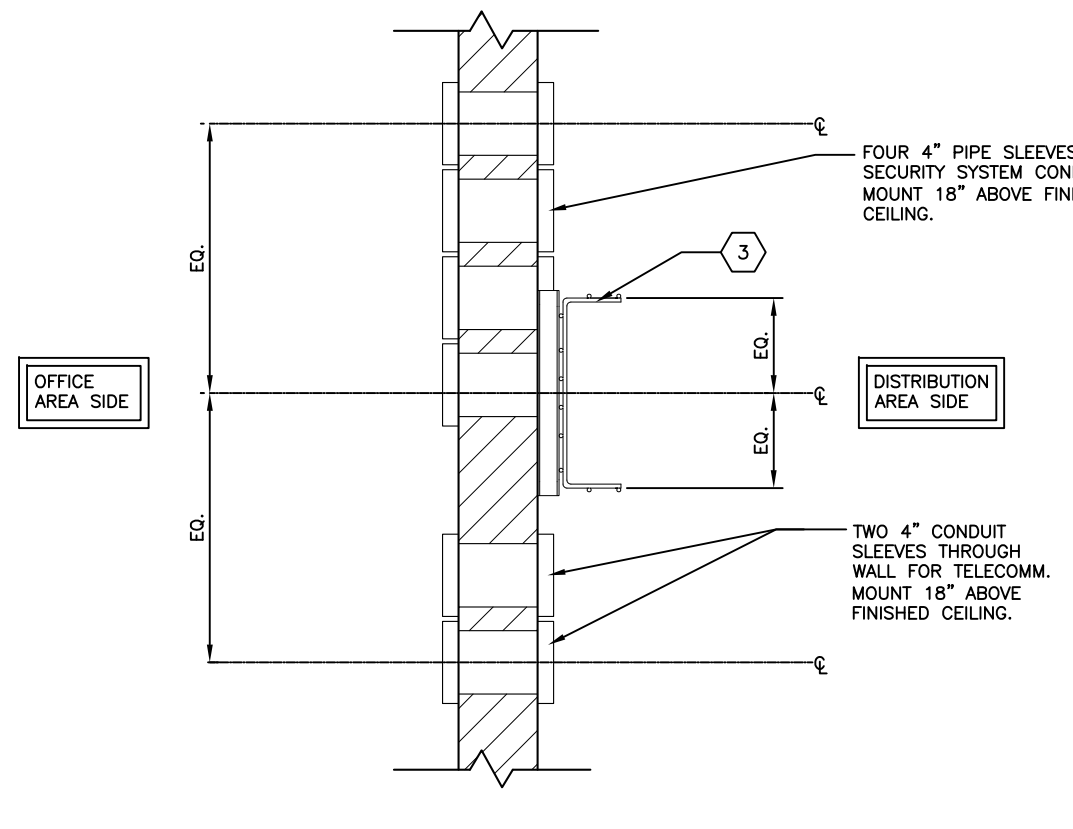
D DETAIL AT COMPUTER ROOM WALL/ OFFICE WALL
 SCALE: 1"=1'-0"



E POWER SUPPLY BAR SECTION TYP.
 SCALE: 6"=1'-0"



F DETAIL AT DISTRIBUTION AREA/ OFFICE WALL
 SCALE: 1"=1'-0"



G SECTION
 SCALE: 1"=1'-0"

- LEGEND:**
- GROUNDING BAR CONNECTED TO BUILDING GROUND LOOP.
 - CONDUIT W/PULL WIRE FROM TELEPHONE BOARD TO OFFICE CEILING SPACE, SIZE AS NOTED.
 - JUNCTION BOX W/20 AMP DEDICATED CIRCUIT TO A LOCKABLE BREAKER. LABEL BOX W/BREAKER AND PANEL.
 - SPECIAL LOCATION DUPLEX RECEPTACLES, OTHERS NOT SHOWN ON PLAN.
 - DUPLEX RECEPTACLE ON DEDICATED CIRCUIT.
 - FIRE EXTINGUISHER WITH SURFACE MOUNTED BRACKET.
 - WALL LIGHT SWITCH.
 - LINE VOLTAGE PASSIVE INFRARED OCCUPANCY SENSOR FOR ROOM LIGHTING CONTROL. WAITSTOPPER # 01-355 OR EQUAL.
 - NETWORK DROP BOX.
 - MAINTENANCE BYPASS MODULE.

- GENERAL NOTES:**
- CONNECT RECEPTACLE CIRCUITS FOR CONVENIENCE OUTLETS TO NEAREST AVAILABLE NORMAL BUILDING CIRCUIT.
 - NO PIPING, DUCTWORK, WIRING, ETC. TO BE ROUTED THROUGH THE COMPUTER ROOM.
 - ROOM CONSTRUCTION, AS REQUIRED BY CODE.
 A. 36" DOOR TO BE PROVIDED WITH SECURITY LOCK, REFER TO DOOR SCHEDULE FOR MORE INFORMATION.
 B. PROVIDE INSULATION IN WALLS AND CEILING TO MEET ASHRAE 90.1-2012 AS A MINIMUM.
 C. PROVIDE ROOM WITH VAPOR RETARDER.
 - ALL PIPE SLEEVES SHALL, UPON INSTALLATION OF THE CONDUITS, BE FILLED/SEALED WITH INTUMESCENT FIRE BARRIER SEALANT.
 - COMBINATION SMOKE/HEAT DETECTORS AS REQUIRED BY CODE. FURNISHED AND INSTALLED BY LESSOR/LESSOR'S AGENT.
 - FIRE SUPPRESSION SYSTEM SHALL BE PROVIDED IN THE COMPUTER ROOM AS REQUIRED BY CODE. REFER TO FXG SPECIFICATION DIVISION 15 MECHANICAL, SECTION 15.1 PLUMBING.
 - REFER TO THE SPECIFICATIONS FOR THE DESIGN CRITERIA FOR BTU RATINGS AND HVAC UNIT LOCATION.

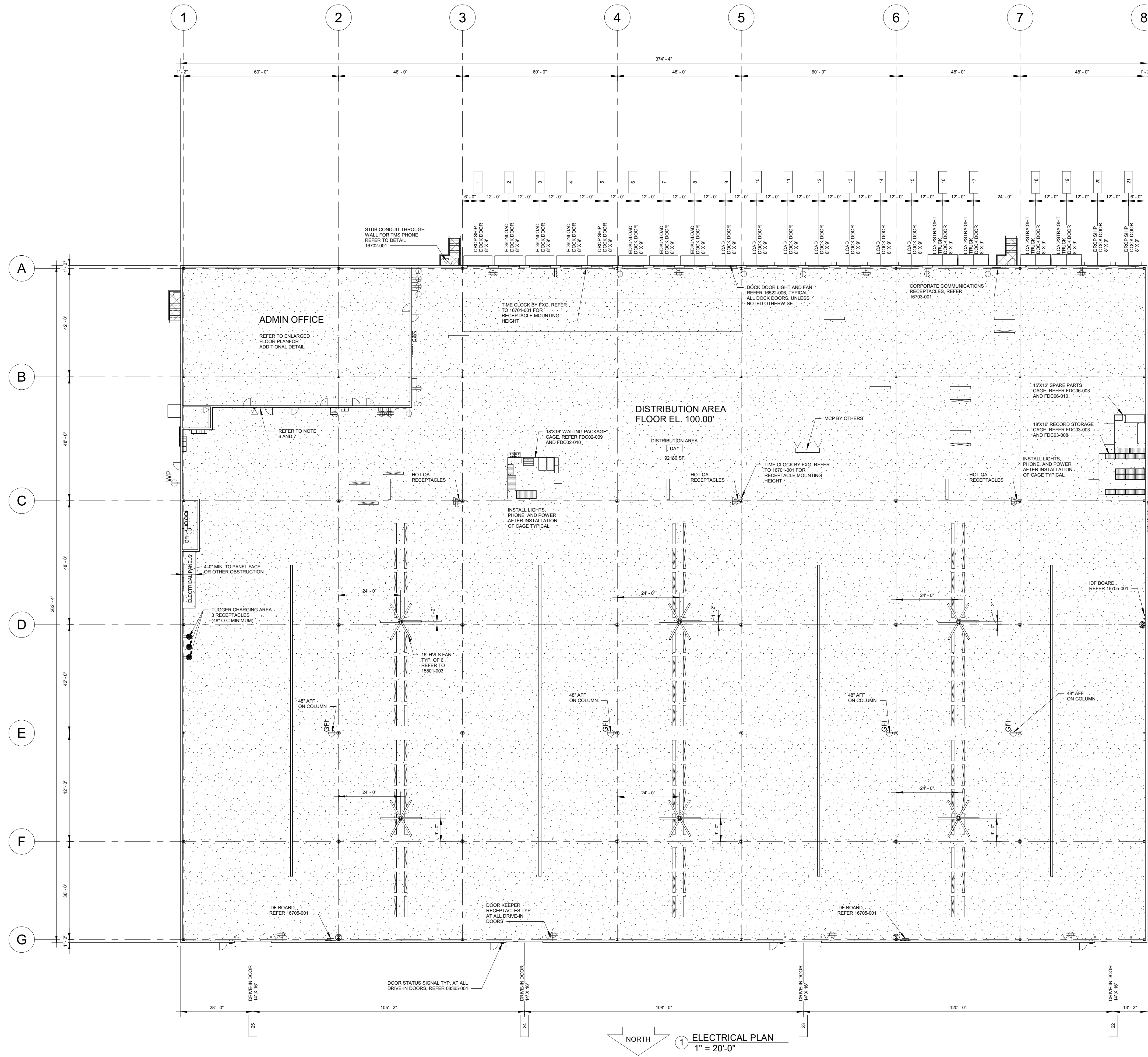
NOT FOR CONSTRUCTION
 This is a progress drawing intended for information only, and shall not be used for construction purposes. The Construction Documents, prepared by other shall address all applicable local, state, and federal codes and regulations. For FXG leased facilities the Construction Documents shall be the responsibility of the Lessor/Lessor's Agent. For FXG owned facilities the Construction Documents shall be the responsibility of the Architect/Engineer of Record.

Rev.	Date	By	Check	Project No.
A	10/4/18	BJI	BJI	

FedEx Ground
 FACILITIES & MATERIAL HANDLING SYSTEMS
 1000 FedEx Drive
 Moon Township, PA 15108
 412-269-1000

Location: LA CROSSE
 Project: CY20 RELOCATION
 Title: COMPUTER ROOM
 State or Province: WI
 Drawing Number: 546-F-035
 Revision: A

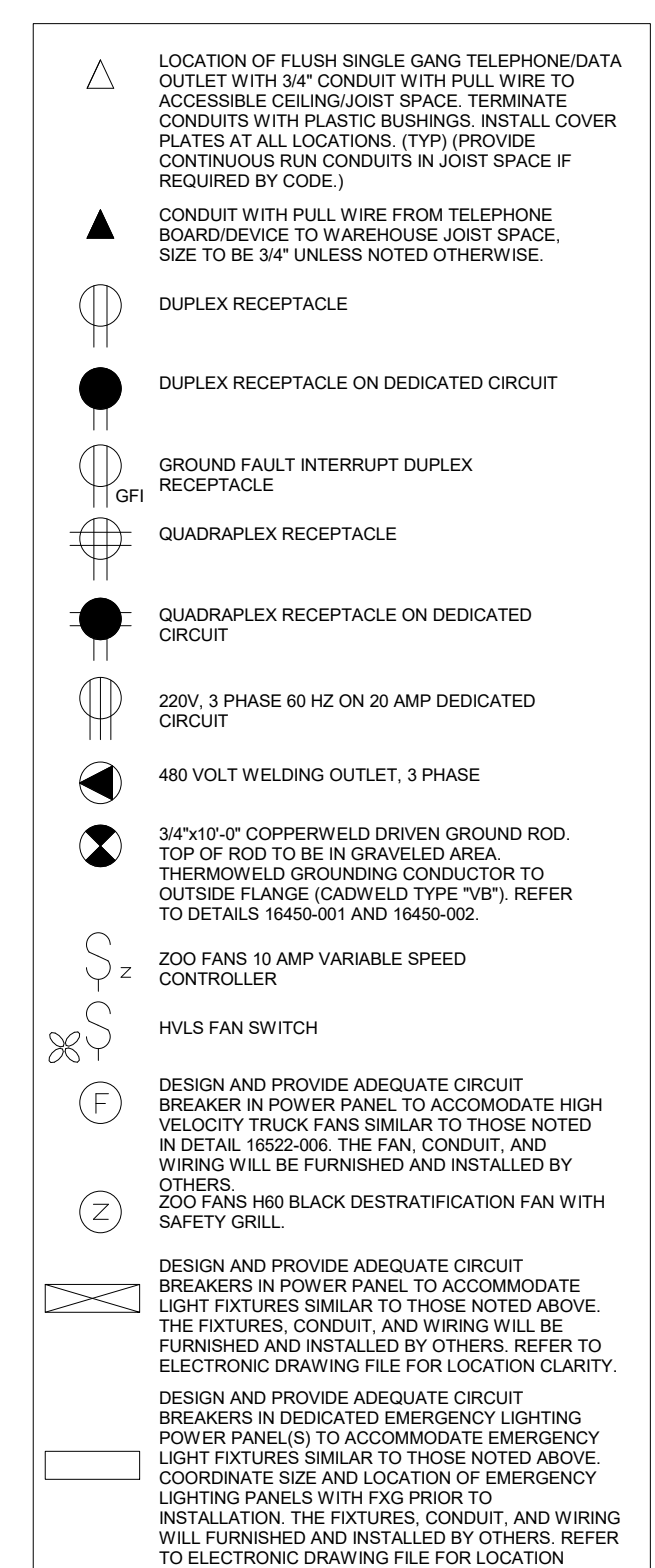
Scale: AS NOTED
 Drawn By: BJI
 Checked By: RJK
 Design Eng.:
 Master File: 546R2GF003
 Address: SOUTH 16 LA CROSSE, WI



1. VERIFY LOCATION OF ELECTRICAL PANELS WITH FXG.
 2. RECESS ALL RECEPTACLES AND SWITCHES BEHIND PLYWOOD WAINSCOT AT DOCK.
 3. ELECTRICAL AND TELEPHONE CONDUITS FOR ALL CAGES SHALL BE EXPOSED AND INSTALLED FROM OVERHEAD.
 4. PROVIDE POWER FOR MH TASK LIGHTING AS INDICATED. FIXTURES BY OTHERS. FIXTURES SHALL BE TS-4 LUNG WITH PARO START ELECTRONIC BALLAST. APPROVED MANUFACTURERS:
 5. SYLVANIA #SL-SH479 32HP SERIES
 6. LITHONIA #LTS-232 SERIES
 7. DAY-BRITE #DS-232 SERIES
 8. METALUX #MT-232-232 SERIES
 9. COLUMBIA #CLB-232 SERIES
 5. FURNISH AND INSTALL THE FOLLOWING MATERIAL HANDLING ELECTRICAL COMPONENTS PER SPECIFICATION SECTION 16.5 PARAGRAPH B:

QUANTITY	AMP/FAC	DESCRIPTION
6	277 VAC	20 AMP CIRCUIT BREAKERS IN BRANCH CIRCUIT LIGHTING PANELBOARDS FOR MATERIAL HANDLING LIGHTING.
6	120 VAC	20 AMP CIRCUIT BREAKERS IN BRANCH CIRCUIT RECEPTACLE PANELBOARDS WHICH SERVE IN ALL MATERIAL HANDLING AREAS.
1	400 AMP	3-POLE CIRCUIT BREAKER(S) SHALL BE PROVIDED TO ACCOMMODATE FXG'S MATERIAL HANDLING EQUIPMENT REQUIREMENTS.

6. H.V.L.S FAN MANUFACTURER'S MASTER CONTROL PANEL MOUNTED @ 60" AFF TO CENTERLINE OF PANEL.
 7. FUME DETECTION CONTROL PANEL MOUNTED @ 60" AFF TO CENTERLINE OF PANEL.



NOT FOR CONSTRUCTION
 This is a progress drawing intended for information only, and shall not be used for construction purposes. The Construction Documents, prepared by others shall address all applicable local, state, federal codes, and regulations. For FXG leased facilities the Construction Documents shall be the responsibility of the Lessor/Lessor's Agent. For FXG owned facilities the Construction Documents shall be the responsibility of the Architect/Engineer of Record.

Rev.	Date	By	Description
A	10/4/18	BID SET.	

FedEx Ground
 FACILITIES & MATERIAL HANDLING SYSTEMS
 1000 FedEx Drive
 Moon Township, PA 15108
 412-269-1000

Location: **LA CROSSE**
 Project: **CY20 RELOCATION**
 Title: **ELECTRICAL PLAN**
 Scale: 1"=20'-0"
 Date Drawn: 7/9/18
 Design Eng: RJK
 Checked By: RJK
 File No: 546R20F002
 Address: SOUTH 16 LA CROSSE, WI

State or Province: **WI**
 Sheet Number: **E-1**
 Drawing Number: **546-E-036**
 Revision: **A**