

# Assessment of Condition and Maintenance of Public Art La Crosse, WI 2021

On-site inspections completed by Luke Achterberg, Adam Oldre, and Michael Martino

**\*Prices within this document reflect rates as of 2021\***

# ELLEN HIXON

Grandad Bluff Park, near shelter

## Observations:

- Condition – Good
- Some oxidation of the patina (green color).
- Lots of tourist activity with people sitting and taking pictures.

## Recommendations:

- Inspect once a week during peak tourism, (May through September), for any wear or damage from human interaction.

## Maintenance:

- Inspect, clean, and wax annually. On a hot day, clean with warm water and mild soap and wax with Renaissance Wax and buff. Estimated cost: \$140.



# A Simpler Time

Riverside Park, railing near levee

## Observations:

- Water, dirt, and weeds at the base of sculpture.

## Recommendations:

- Remove weeds, clean around foot of sculpture.

## Maintenance:

- Inspect, clean, and wax annually. On a hot day, clean with warm water and mild soap and wax with Renaissance Wax and buff. Estimated cost: \$100.



# ANIDONTS

Myrick Park, entrance

## Observations:

- Paint Issue: Large branch rubbing on head of sculpture.
- Rust Issue: Mulch covering metal, some paint deterioration.
- Visual Issue: Two memorial trees planted too close to sculpture, blocking view.

## Recommendations:

- Prune tree, remove mulch from concrete pad, and move trees or remove sculpture, refinish and reinstall away from growing trees.

## Maintenance:

- Inspect, clean, and wax annually. Clean with soft cloth and check for rust and paint deterioration.
- In 2036, possible refinish and paint. Estimated cost: \$4,000.



# Walter “Babe” Weigent

Weigent Park, corner of 16<sup>th</sup> and Cass Streets

## Observations:

- The sculpture has been vandalized. It has been hit with eggs at least two times.
- Evidence of tampering with the bench which could have led to the two cracks on the back of the granite base.
- The two bushes in the front obscure the base.
- One of the bolts on one of the plaques is rusting.
- The sculpture cannot be seen at night.

## Recommendations:

- Lights need to be installed to discourage vandalism and enhance the view at night.
- La Crosse Memorial was consulted about the cracks in the granite and they recommend the cracks be filled with black epoxy.
- The bushes in front can be moved apart or more to the sides.

## Maintenance:

- Inspect, clean, and wax annually. On a hot day, clean with warm water and mild soap and wax with Renaissance Wax and buff.
- The rusting bolt needs to be cleaned and coated to slow the rusting process.
- In 2026, assess anchor rust issue. Replace with 5/5 hardware.



# Dancers

Weber Theater, south side

## Observations:

- Repainted in 2019.
- Estimated anchor of life 26-30 years.

## Maintenance:

- Clean and inspect annually.
- In 2046, inspect anchors and consider repainting. Estimated cost: \$15,000-\$25,000.



# Eagle Watch

Highway 35 across from Bridgeview Plaza

## Observations:

- Condition-Good.
- Some natural cracking of the wood.

## Recommendations:

- Take note of the cracking in the tree to make sure it is not affecting the structural integrity of the branch on which the fiberglass eagle is bolted.

## Maintenance:

- Inspect annually.



# Gideon Hixon

Across the street from Hixon House

## Observations:

- Condition – Good.
- The top of the base is discolored.

## Recommendations:

- Base should be cleaned to remove discoloration.

## Maintenance:

- Inspect, clean, and wax annually. On a hot day, clean with warm water and mild soap and wax with Renaissance Wax and buff.





# George C. Poage

Poage Park

## Observations:

- Condition – Good.
- Bronze

## Maintenance:

- Inspect, clean, and wax annually. On a hot day, clean with warm water and mild soap and wax with Renaissance Wax and buff.
- Stainless-steel base cleaned with Weiman stainless steel cleaner. Estimated cost: \$400.
- In 2031, inspect base for cracks.



# Hoeschler Fountain

Riverside Park

## Observations:

- Condition – Good.
- Bronze letters embedded in the concrete.

## Recommendations:

- Inspect annually. Consult a plumbing contractor for upkeep.



# Le Pineau

2<sup>nd</sup> and Main Streets

## Observations:

- Condition – Good.
- Some staining on the base due to run-off from the figure.

## Recommendations:

- The wax will seal the surface and reduce the run-off that stains the base.
- To clean the base, make a paste of one part by weight of dry powdered ammonium chloride and four parts by weight of a suitable filler such as diatomaceous earth. Form a smooth paste by adding ammonia water. Apply a layer of paste one eighth to one quarter inch thick over stained area: do not remove until dry. May take three applications. Base could also be sealed to help prevent further staining.

## Maintenance:

- Inspect, clean, and wax annually. On a hot day, clean with warm water and mild soap and wax with Renaissance Wax and buff. Estimated cost: \$50.



# La Crosse Players

Highway 35

## Observations:

- The paint on the sculpture is flaking in some areas; mostly the feet.
- Weeds are growing in front of the lights, blocking the light at night.
- Caulk on base is shrinking, leaving gaps.

## Recommendations:

- Clean and repaint structure.
- Remove weeds.
- Clean and re-caulk base plate.

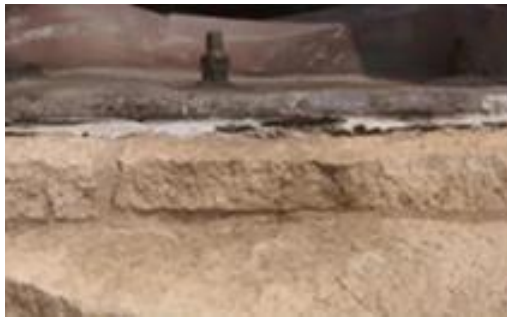
## Maintenance:

- Inspect and clean annually

## Options for re-painting:

1. Scrape and touch up flaking spots.
2. Polyurethane bronze paint. This would change the finish to a glossier metallic look.
3. Clean and repaint with Sherwin Williams dura-plate 235 Marine Paint. Life expectancy of Marine Paint is 15-20 years.

Because of the height and terrain around it, it is suggested to consult a company like La Crosse Sign Company for repainting.



# Lyra

La Crosse Municipal Harbor Point

## Observations:

- Metal and paint condition-good.
- There is a visual issue with the plants obscuring the base of the sculpture.

## Recommendations:

- Remove plants or use a shorter ground cover that will not grow more than 3” high.

## Maintenance:

- Inspect annually and clean as needed.
- In 2041, repaint. Estimated cost: \$5,000.



# Reflections

Main Street in front of the La Crosse Public Library

## Observations:

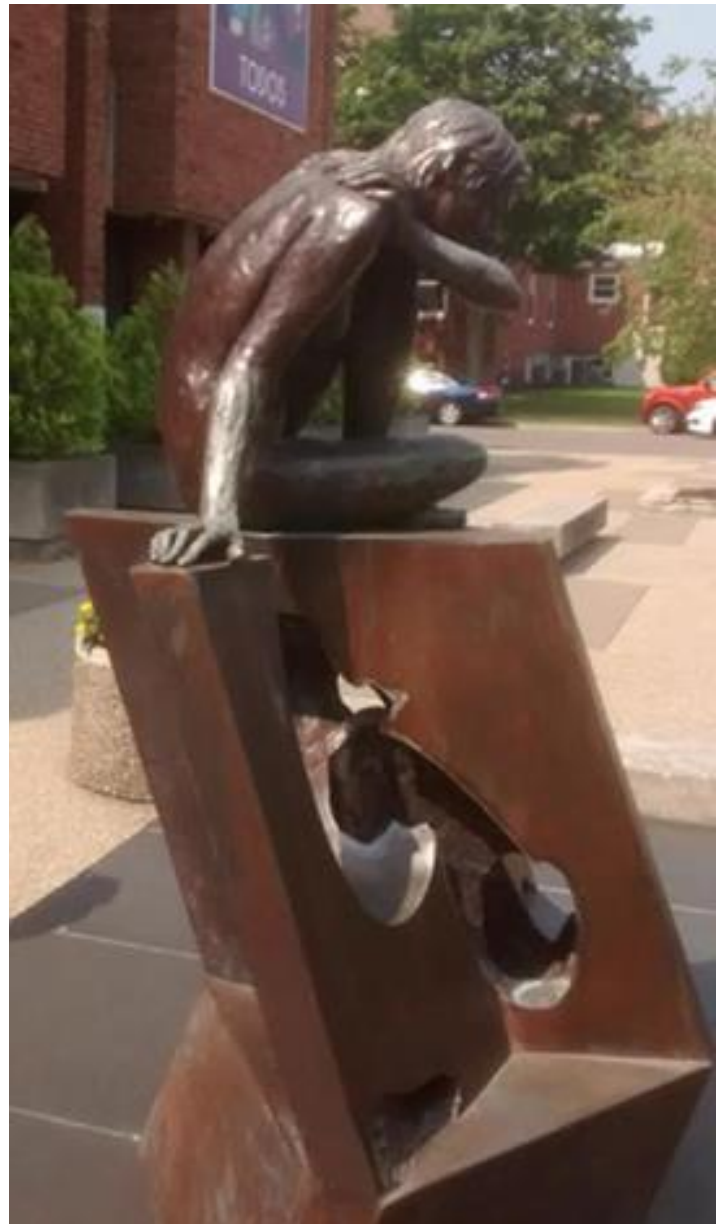
- The bronze figure is in good condition. It needs to be cleaned and waxed. There are gaps in the seams of the base panels. There are some areas under the base panels where the concrete is crumbling.

## Recommendations:

- Re-caulk the seams between the vase panels, estimated cost: \$50
- Repair concrete. Although the damage seems to be minimal, we recommend consulting concrete expert to determine extent of damage and best way to fix it.

## Maintenance:

- Inspect, clean, and wax annually. On a hot day, clean with warm water and mild soap and wax with Renaissance Wax and buff. Estimated cost: \$250.



# Confluence

## Pump House Mural

### Observations:

- Condition – Good.
- There is a small white streak on the left side.
- On the ice image on the right side, there is a very slight vertical crack.
- There is a broken conduit pipe in the center at the base on the wall.
- One of the lights is showing signs of corrosion on the outside of the metal box.

### Recommendations:

- Contact the artist, John Pugh, about proper cleaning procedure.
- Keep an eye on slight crack to see if it gets larger.
- Contact an electrician to fix broken conduit.
- Clean the corrosion on the light box.
- Inspect and clean every five years.



# International Friendship Gardens

Riverside Park, north side

## Observations:

- The Bezedka structure lettering is faded in some places.
- Folk art image on the underside of the roof is in good shape and just needs to be cleaned.
- Some planters are cracked.
- The German Garden sculpture has some of the metal leaf rubbed off.

## Recommendations:

- The Bezedka should be cleaned with warm water and mild soap and the lettering should be repainted with metallic gold sign painter's enamel. Estimated cost: \$200.
- The leaf that is rubbed off on the German sculpture can be replaced with imitation gold and silver leaf. Estimated cost: \$100.
- The cracked planters can be patched with epoxy putty or fiberglass patch.
- Inspect and clean annually.
- In 2036, possibly repaint.





# Veteran Memorials

Veterans Freedom Park

## Observations:

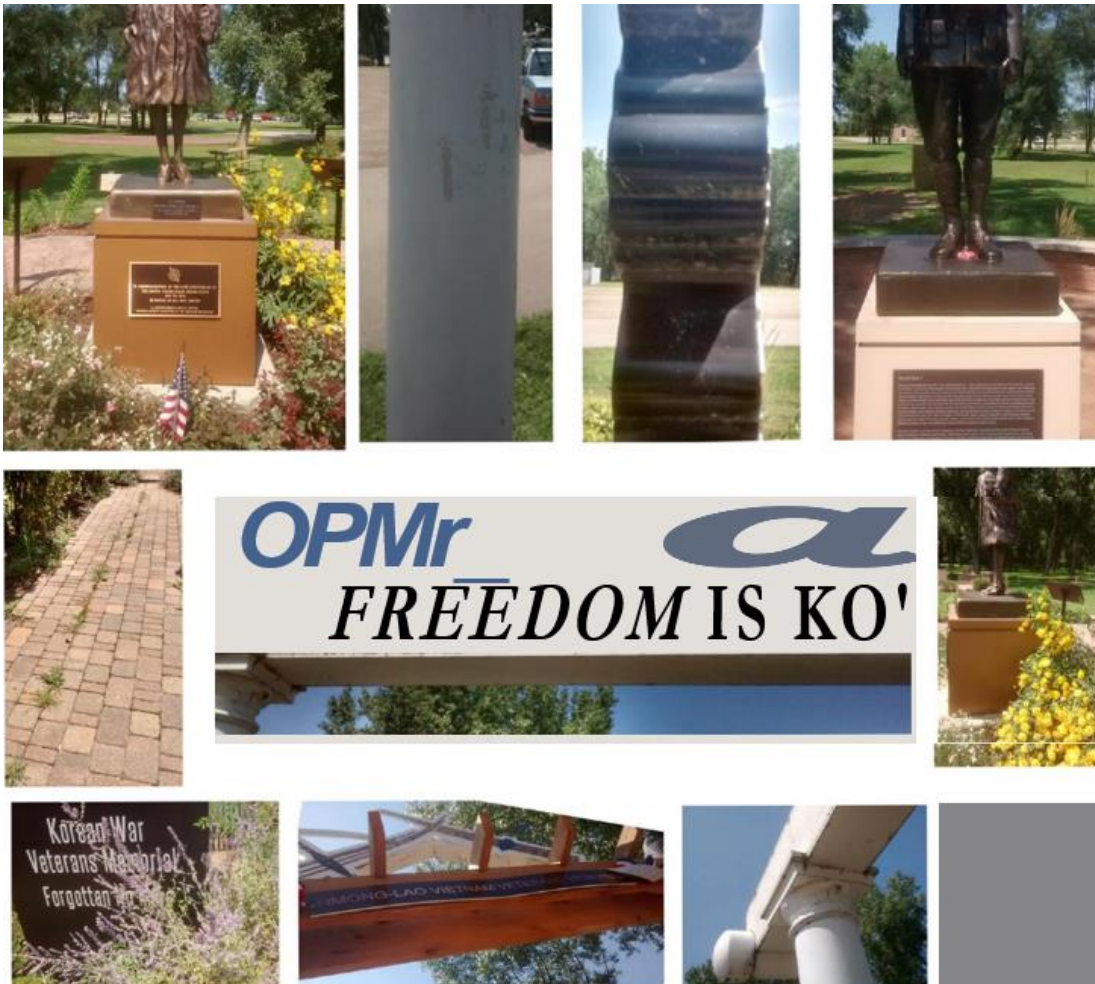
- Condition – Good.
- The fiberglass memorials have some small bare spots in deep areas.
- There are a few cut lines on the base of one figure.
- The wood arches have some mold on them. Some have paint chipping off.
- There are weeds in-between the bricks on the walkway.
- Foliage is obstructing some of the bases and lettering.

## Recommendations:

- The mold can be removed with mold cleaning solution.
- Some of the structures need to have the paint touched up or repainted, estimated: \$350. Another option is to ask volunteers to maintain the memorials.
- Prune or remove plants obscuring the base and lettering.
- Contact DWO company to patch fiberglass.

## Maintenance:

- Inspect and clean figures with mild soap annually.
- Every five years, possibly repaint structures.
- In 2036, possibly repaint structures and fiberglass figures.



# La Crosse Players

Main and 2<sup>nd</sup> Streets

## Observations:

- Condition – Good.
- The bronze sculpture, the patina is turning slightly green due to oxidation.
- The plants and flowers around the base are obscuring the view of the whole sculpture.

## Recommendations:

- The foliage needs to be pruned or removed so the full view of the sculpture can be seen from all sides.

## Maintenance:

- Inspect, clean, and wax annually. On a hot day, clean with warm water and mild soap and wax with Renaissance Wax and buff. Estimated cost: \$450. The wax will help prevent further oxidation.



# Lueth Park Memorials

## Observations:

- Condition – Good.
- Some murals have abrasions due to activity.
- Tall weeds obscuring mural on the north wall.
- “Tagging” in several locations, unclear if it was allowed or vandalism.

## Recommendations:

- Remove leaves and weeds.

## Maintenance:

- Inspect and clean annually.
- Touch up paint in high activity areas every five years.





# Burns Park Memorial

7<sup>th</sup> and Main Streets

## Observations:

- Condition – Good.
- Recently done.
- Flower beds should protect mural from damage.

## Recommendations:

- Make sure flowers on the east side are not too tall so they do not obstruct the mural.

## Maintenance:

- Inspect and clean annually.
- In 2026 and 2036, touch up paint. In 2031 and 2041, possibly repaint.



# Helping Hands

Main Street Parking Ramp Memorial

## Observations:

- Condition – Good.
- Dark marks at the bottom.

## Recommendations:

- Clean black marks.

## Maintenance:

- Inspect and clean annually.
- In 2031 and 2041, possibly touch up.



# **Eagle Landmark**

Riverside Park

The Eagle is currently being refurbished.

# **The Scroll**

Formerly located at La Crosse Tribune on 3<sup>rd</sup> St

Due to deterioration and maintenance issues, the sculpture was taken down and the bronze sections are currently in storage.