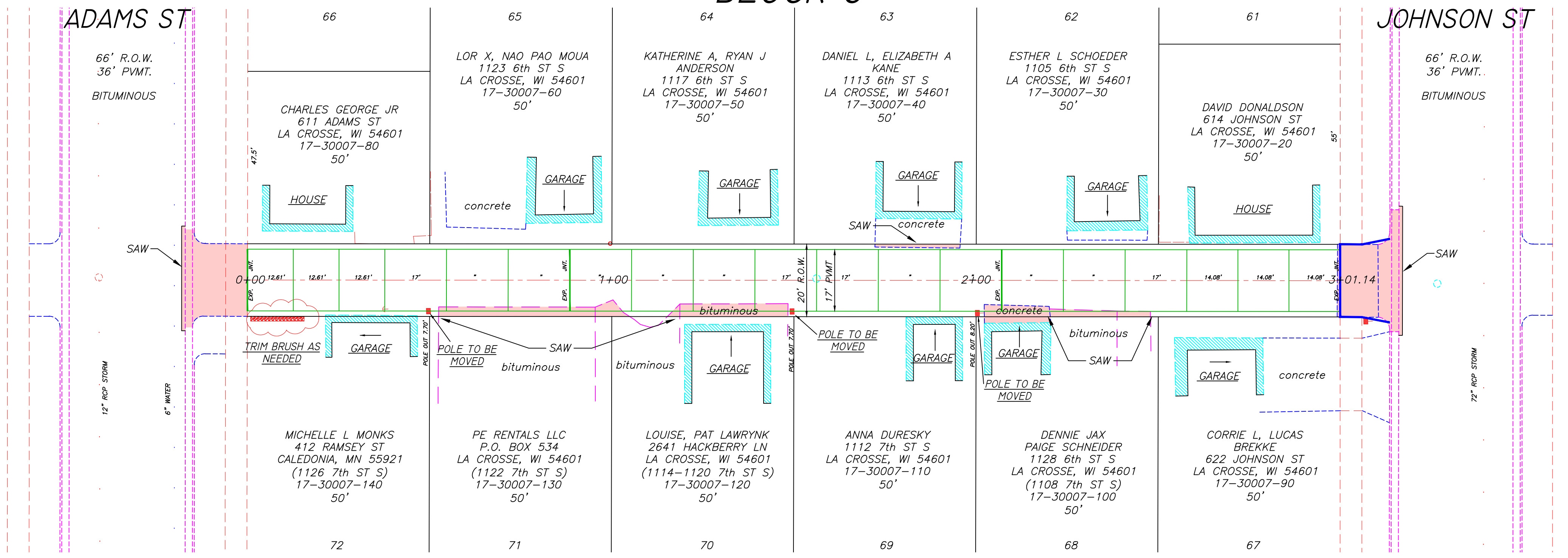


SCALE: 1"=20' H  
 1"= 2' V  
 ELEVATIONS SHOWN ARE  
 NAVD 88

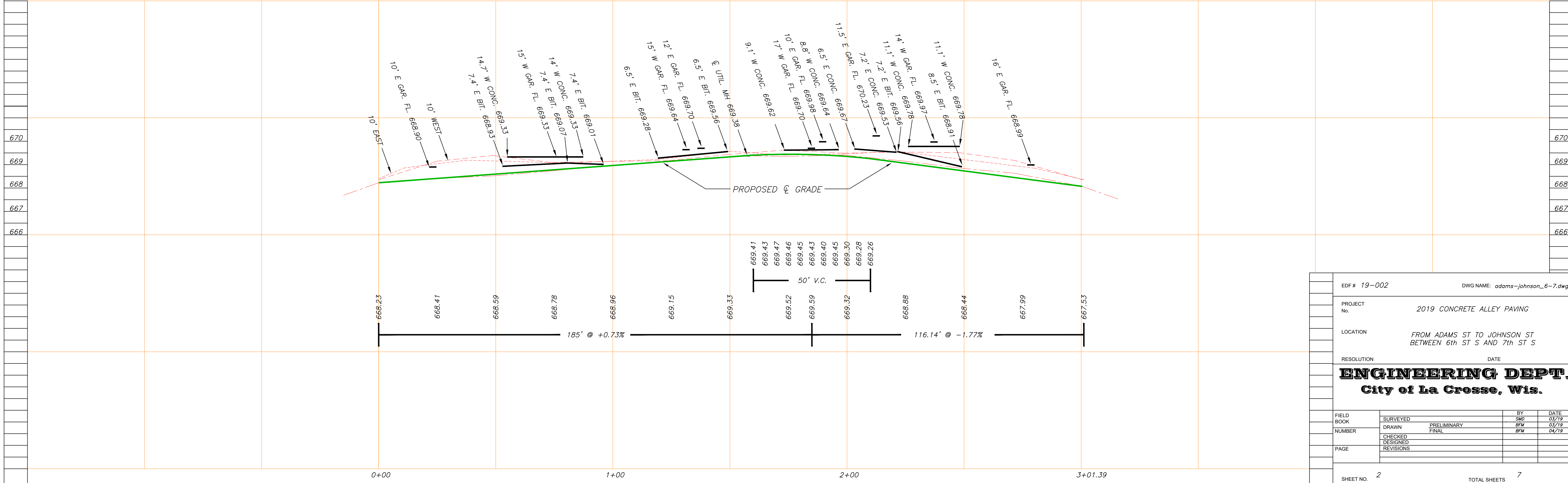
## E.S. SMITH'S ADDN. BLOCK 6



| QUANTITIES  |                                    |
|-------------|------------------------------------|
| 570 SQ. YD. | 6" CONCRETE ALLEY PAVEMENT         |
| 614 SQ. FT. | 7" CONCRETE ALLEY APPROACH         |
| 92 SQ. FT.  | 6" CONCRETE D/W                    |
| 60 LIN. FT. | STD. C&G W/ 6" CRUSHED BASE        |
| 64 SQ. FT.  | 3" BIT. P.V.M.T. INCL. 6" CR. BASE |
| 121 SQ. FT. | 2" BIT. P.V.M.T. INCL. 6" CR. BASE |
| 1           | L.S. EROSION CONTROL               |
| 1           | L.S. TRAFFIC CONTROL               |
| REMOVAL     |                                    |
| 709 SQ. FT. | CONCRETE (ANY DEPTH)               |
| 362 SQ. FT. | BITUMINOUS (ANY DEPTH)             |
| 60          | LIN. FT. C&G                       |
| 51          | LIN. FT. CONCRETE SAWING           |
| 167         | LIN. FT. BITUMINOUS SAWING         |

| BENCHMARKS            |        |
|-----------------------|--------|
| TOP NUT OF HYDRANTS   |        |
| 6th ST S & ADAMS ST   | 671.34 |
| 7th ST S & ADAMS ST   | 672.07 |
| 6th ST S & JOHNSON ST | 671.86 |
| 7th ST S & JOHNSON ST | 671.42 |

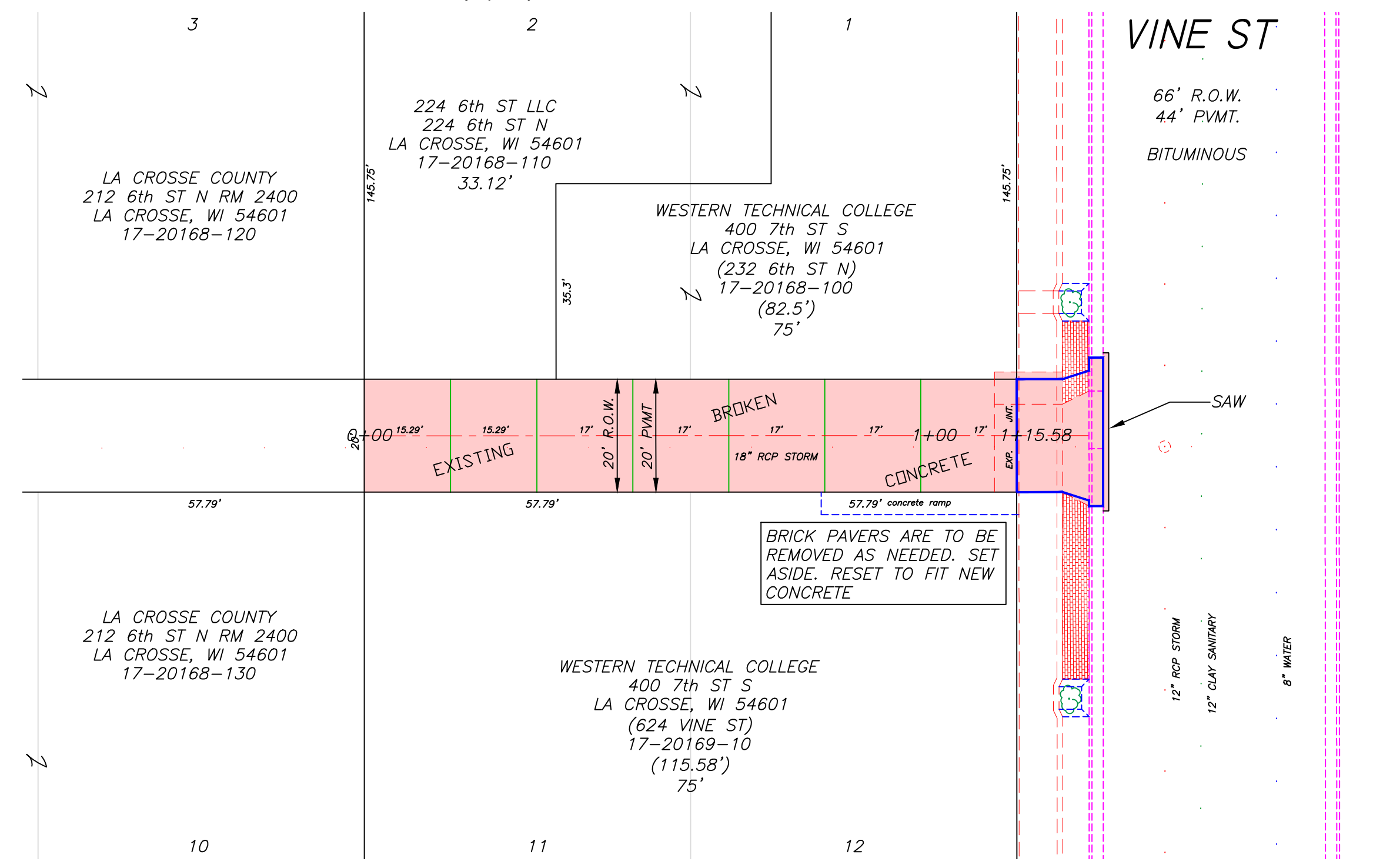
**NOTE**  
 CONTRACTOR IS TO VERIFY LOCATION OF ALL UTILITIES  
 PRIOR TO ANY CONSTRUCTION



|   |  |                                 |           |
|---|--|---------------------------------|-----------|
| EDF # 19-002  |  | DWG NAME: adams-johnson_6-7.dwg |           |
| PROJECT No.   | 2019 CONCRETE ALLEY PAVING                                   |                                 |           |
| LOCATION  | FROM ADAMS ST TO JOHNSON ST<br>BETWEEN 6th ST S AND 7th ST S |                                 |           |
| RESOLUTION  | DATE   |                                 |           |
| <b>ENGINEERING DEPT.</b><br>City of La Crosse, Wis. |  |                                 |           |
| FIELD BOOK  | SURVEYED   | BY                              | DATE      |
| NUMBER  | DRAWN  | PRELIMINARY                     | SMW 03/19 |
| PAGE  | CHECKED  | FINAL                           | RFV 03/19 |
|   | DESIGNED   |                                 |           |
|   | REVISIONS  |                                 |           |
| SHEET NO. 2   | TOTAL SHEETS 7   |                                 |           |

# BURN'S, FARNAM & BURN'S ADDN. BLK 7

SCALE: 1"=20' H  
1"= 2' V  
ELEVATIONS SHOWN ARE  
NAVD 88



**QUANTITIES**

- 257 SQ. YD. 6" CONCRETE ALLEY PAVEMENT
- 264 SQ. FT. 7" CONCRETE ALLEY APPROACH
- 26 LIN. FT. STD. C&G W/ 6" CRUSHED BASE
- 28 SQ. FT. 3" BIT. PVMT. INCL. 6" CR. BASE
- 10 SQ. FT. BRICK PAVER REPLACEMENT
- 1 L.S. EROSION CONTROL
- 1 L.S. TRAFFIC CONTROL

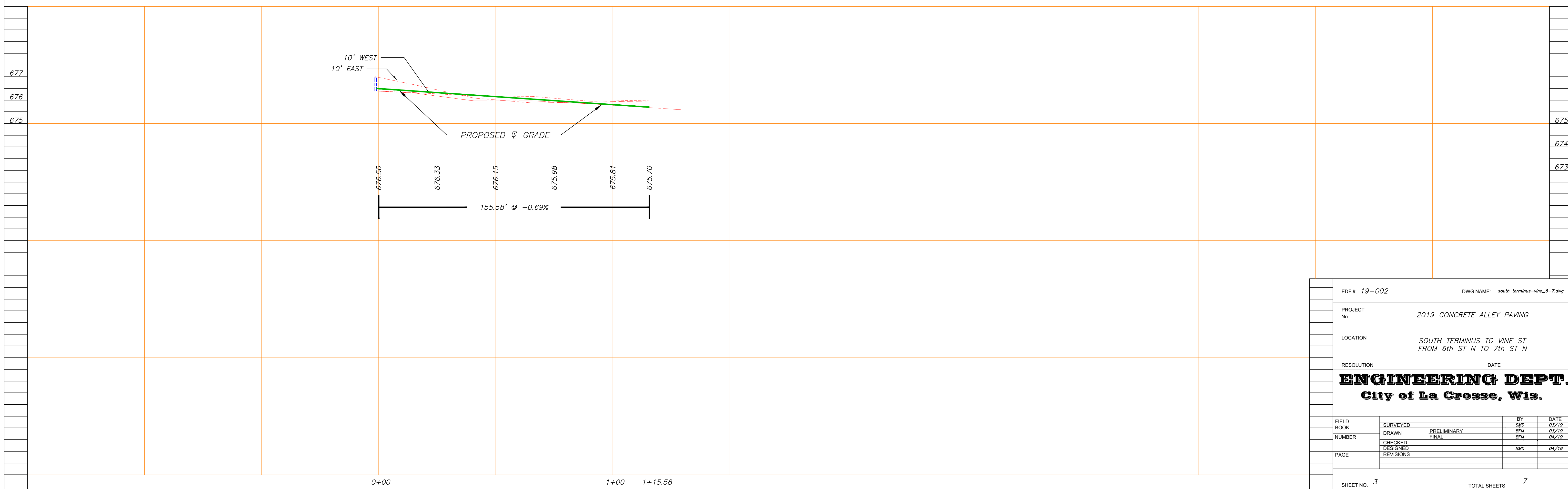
**REMOVAL**

- 2600 SQ. FT. CONCRETE (ANY DEPTH)
- 26 LIN. FT. C&G
- 28 SQ. FT. BITUMINOUS (ANY DEPTH)
- 30 LIN. FT. BITUMINOUS SAWING
- 27 SQ. FT. BRICK PAVER (SAVE FOR REPLACEMENT)

**NOTE**  
CONTRACTOR IS TO VERIFY LOCATION OF ALL UTILITIES PRIOR TO ANY CONSTRUCTION

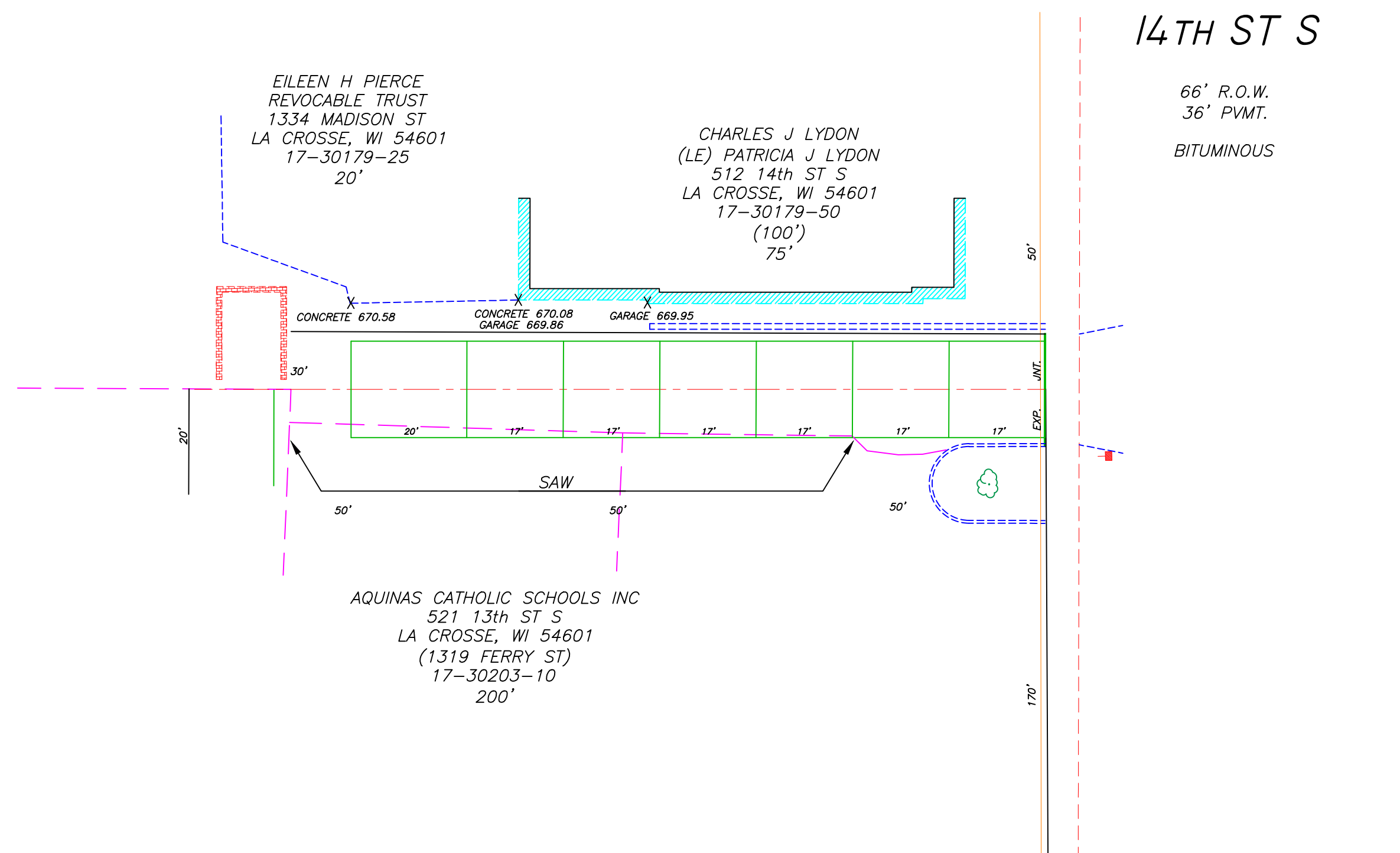
**BENCHMARKS**  
TOP NUT OF HYDRANTS

|                    |        |
|--------------------|--------|
| 6th ST N & VINE ST | 677.48 |
| 7th ST N & VINE ST | 677.54 |



|   |  |                                       |           |
|---|--|---------------------------------------|-----------|
| EDF # 19-002  |  | DWG NAME: south terminus-vine_6-7.dwg |           |
| PROJECT No.   | 2019 CONCRETE ALLEY PAVING                             |                                       |           |
| LOCATION  | SOUTH TERMINUS TO VINE ST<br>FROM 6th ST N TO 7th ST N |                                       |           |
| RESOLUTION  | DATE   |                                       |           |
| <b>ENGINEERING DEPT.</b><br>City of La Crosse, Wis. |  |                                       |           |
| FIELD BOOK  | SURVEYED   | BY                                    | DATE      |
| NUMBER  | DRAWN  | PRELIMINARY                           | SMD 03/19 |
|   | CHECKED  | FINAL                                 | RFW 04/19 |
| PAGE  | DESIGNED   | SMD                                   | 04/19     |
|   | REVISIONS  |                                       |           |
| SHEET NO. 3   | TOTAL SHEETS 7   |                                       |           |

RUBLEE AND GILLETTE'S ADDN.



SCALE: 1"=20' H  
1"= 2' V  
ELEVATIONS SHOWN ARE  
NAVD 88

**QUANTITIES**

231 SQ. YD. 6" CONC. ALLEY PVMT.  
35 SQ. FT. 3" BIT. PAVEMENT W/ 6" CRUSHED BASE  
245 SQ. FT. 2" BIT. PAVEMENT W/ 4" CRUSHED BASE  
1 L.S. EROSION CONTROL  
1 L.S. TRAFFIC CONTROL

**REMOVALS**

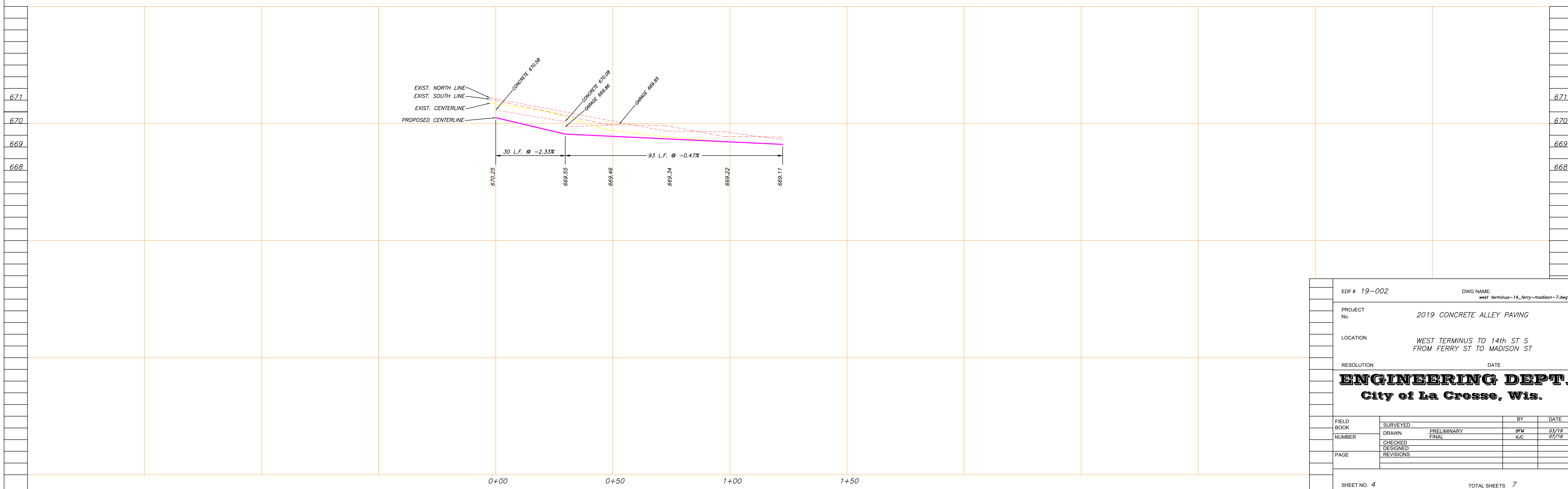
335 SQ. FT. CONCRETE REMOVAL (ANY DEPTH)  
6 LIN. FT. CONCRETE SAWING  
205 LIN. FT. BIT. SAWING

SUBD. OF BLK. 2  
RUBLEE AND OBER'S SUBD.

**NOTE**  
CONTRACTOR IS TO VERIFY LOCATION OF ALL UTILITIES  
PRIOR TO ANY CONSTRUCTION

**BENCHMARKS**  
TOP NUT OF HYDRANT

|                      |        |
|----------------------|--------|
| 14th ST & FERRY ST   | 672.80 |
| 14th ST & MADISON ST | 672.12 |



|   |   |            |                |
|---|---|------------|----------------|
| EDF # 19-002  | DWG NAME:<br>west_terminus-14_ferry-madison-2.dwg |            |                |
| PROJECT No.<br>2019 CONCRETE ALLEY PAVING                             |   |            |                |
| LOCATION<br>WEST TERMINUS TO 14th ST S<br>FROM FERRY ST TO MADISON ST |   |            |                |
| RESOLUTION  | DATE  |            |                |
| <b>ENGINEERING DEPT.</b><br>City of La Crosse, Wis.                   |   |            |                |
| FIELD BOOK  | SURVEYED  | BY         | DATE           |
| NUMBER  | DRAWN PRELIMINARY<br>CHECKED FINAL                | BFM<br>KSC | 07/19<br>07/19 |
| PAGE  | DESIGNED<br>REVISIONS                             |            |                |
| SHEET NO. 4   | TOTAL SHEETS 7                                    |            |                |