

City Vision 2020 Plan
 Recommendations for 621 3rd Street

- Site is shown as a redevelopment parcel-Figure 9.3 (See inset Parcel R-8 on this page 1)
- Site is shown as a Gateway Project, Figure 9.4 (Page 2)
- Site is also within the Redevelopment Authority Blight/Redevelopment Area as part of the Riverside Redevelopment Area (See Map page 3)

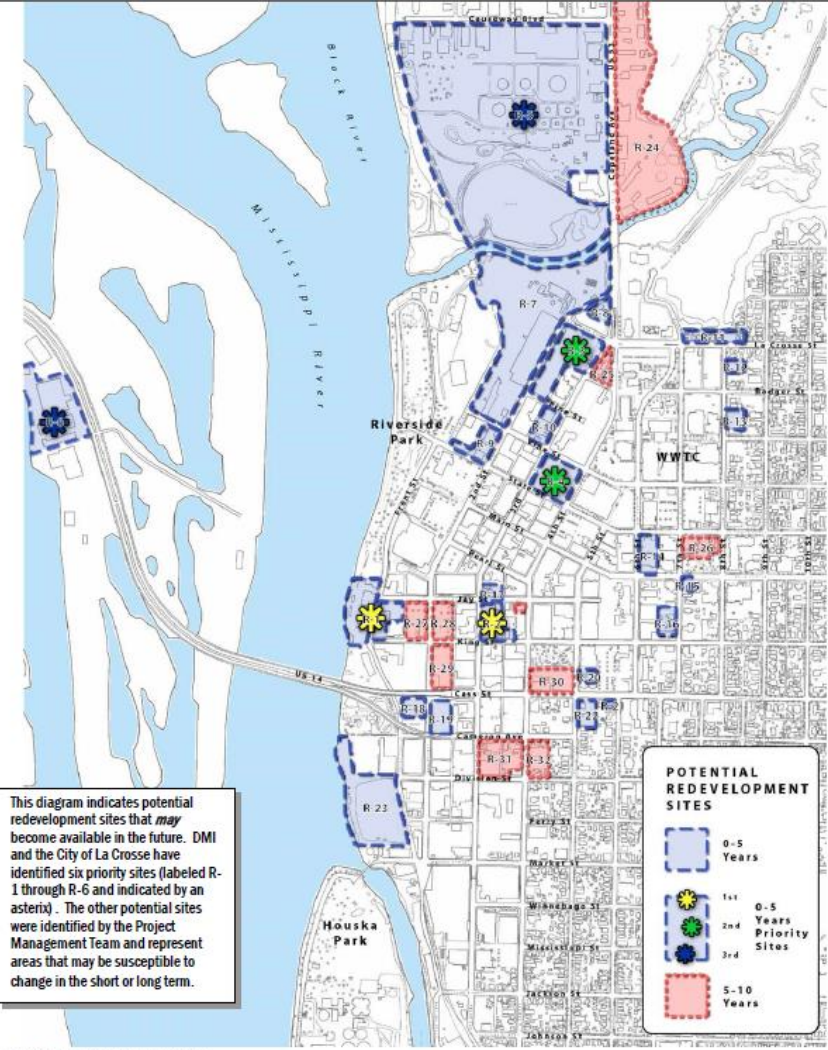
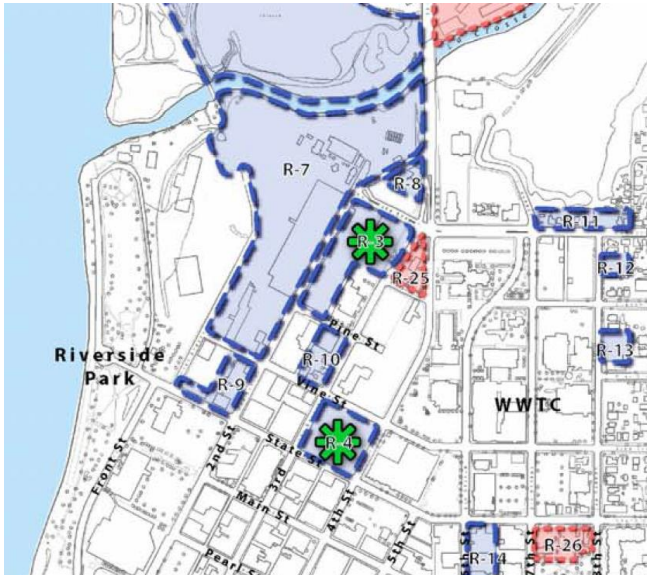


Fig. 9.3-Potential Redevelopment Sites

LA CROSSE CITY VISION 2020 MASTER PLAN



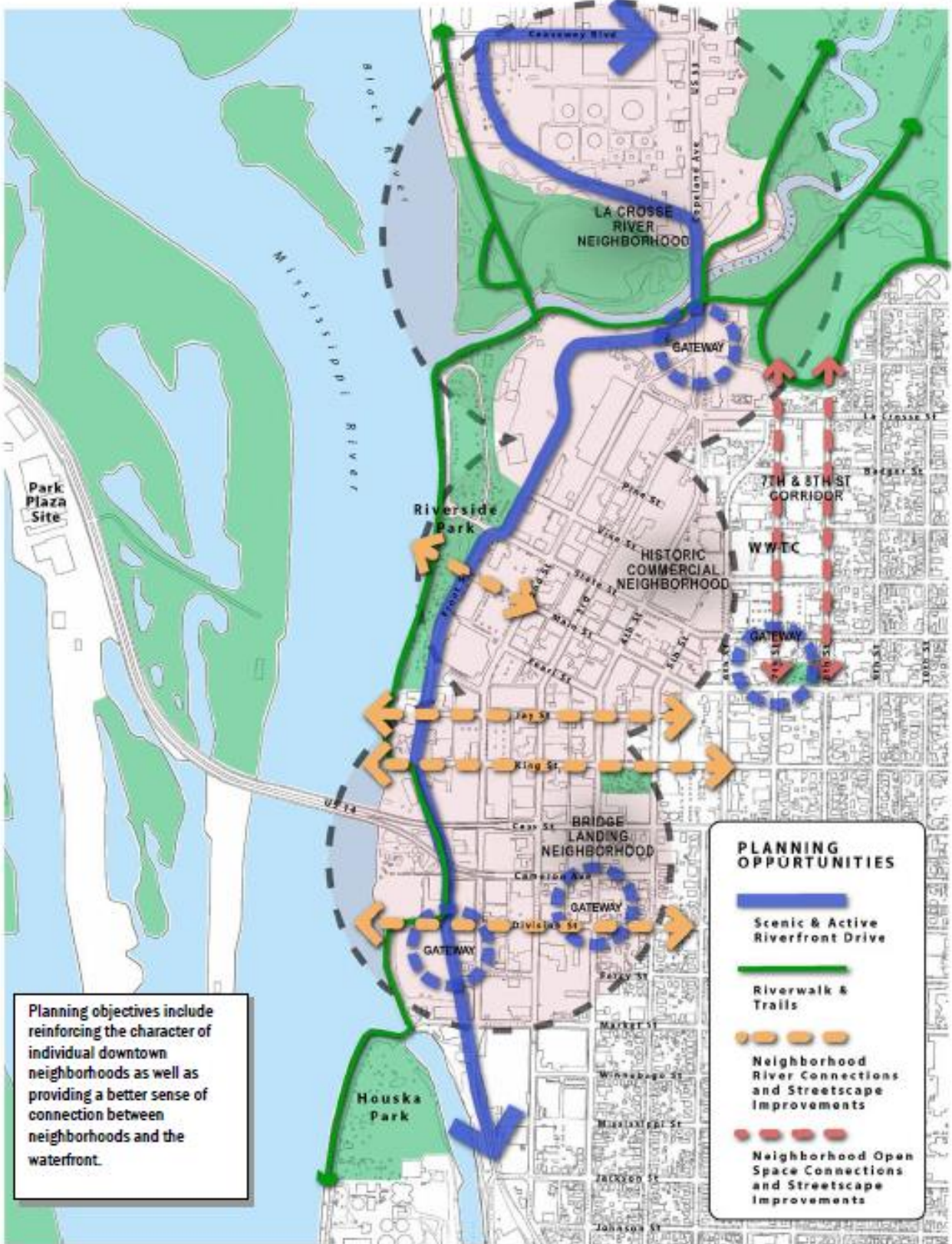
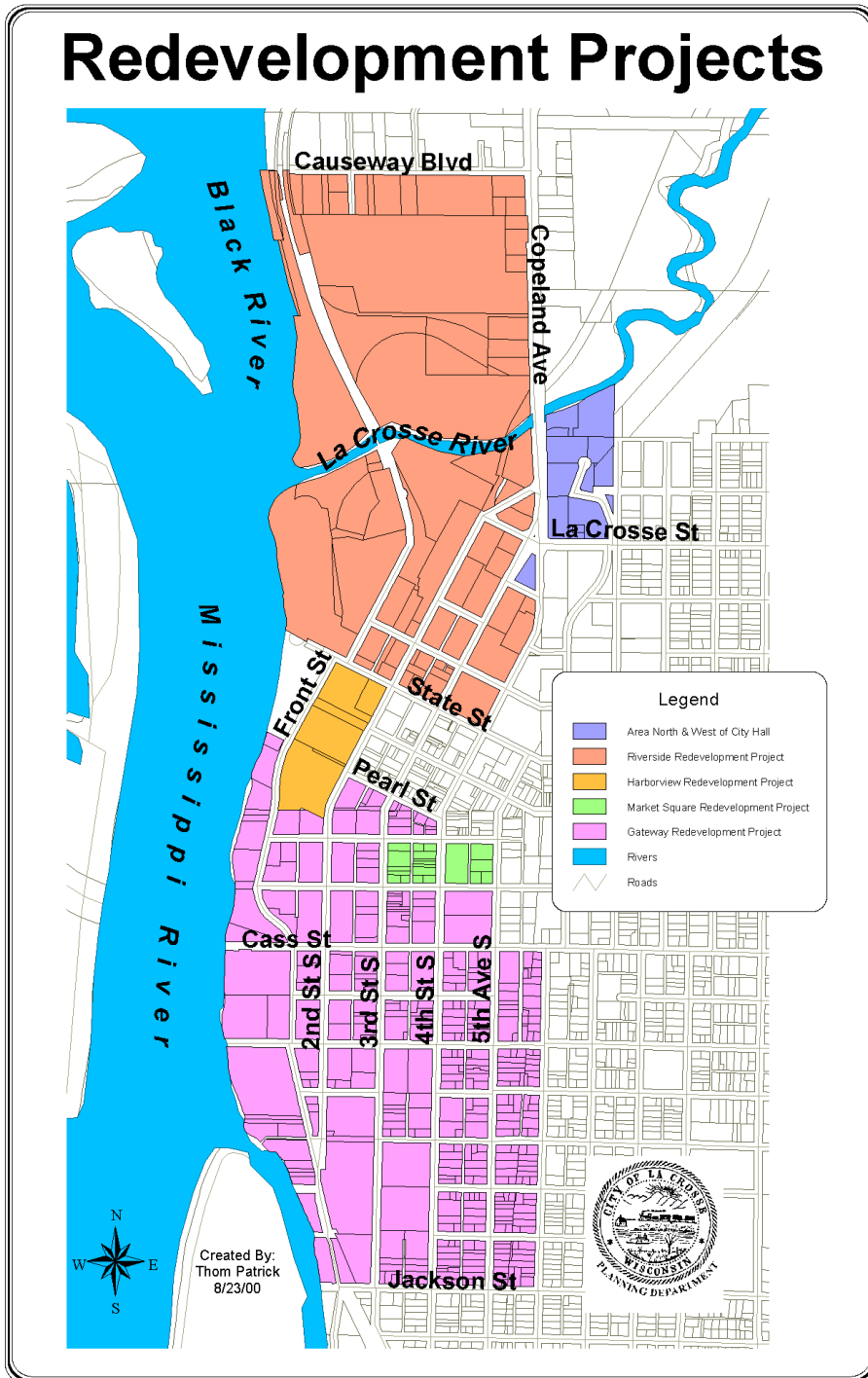
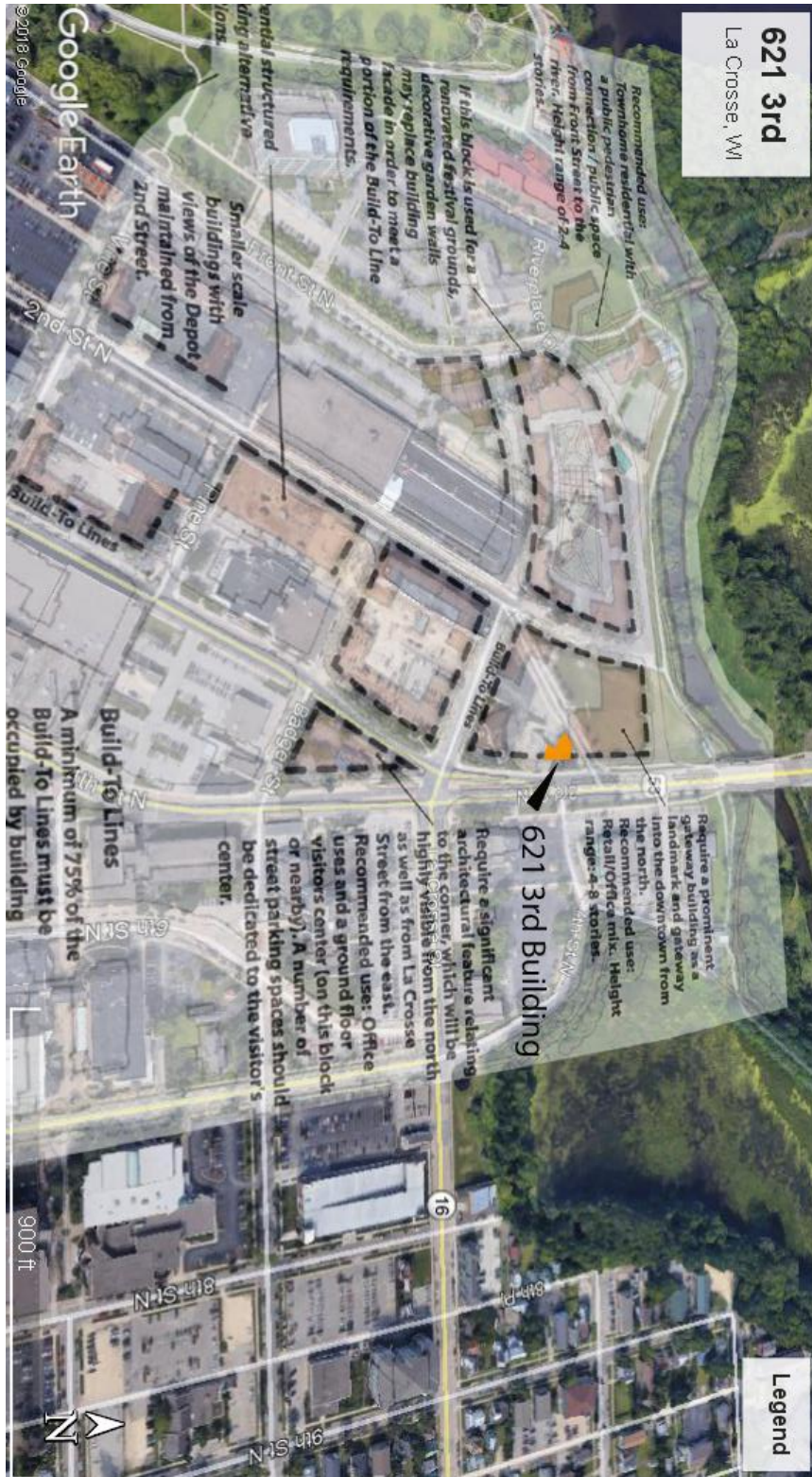


Fig. 9.4-Planning Opportunities



Map of City Vision 2020 Plan Recommendations Overlaid on Site/Parcel Aerial Photo (showing location of parcel in relation to plan recommendations).



Parcel Map Showing Developable Area and Setback Requirements

