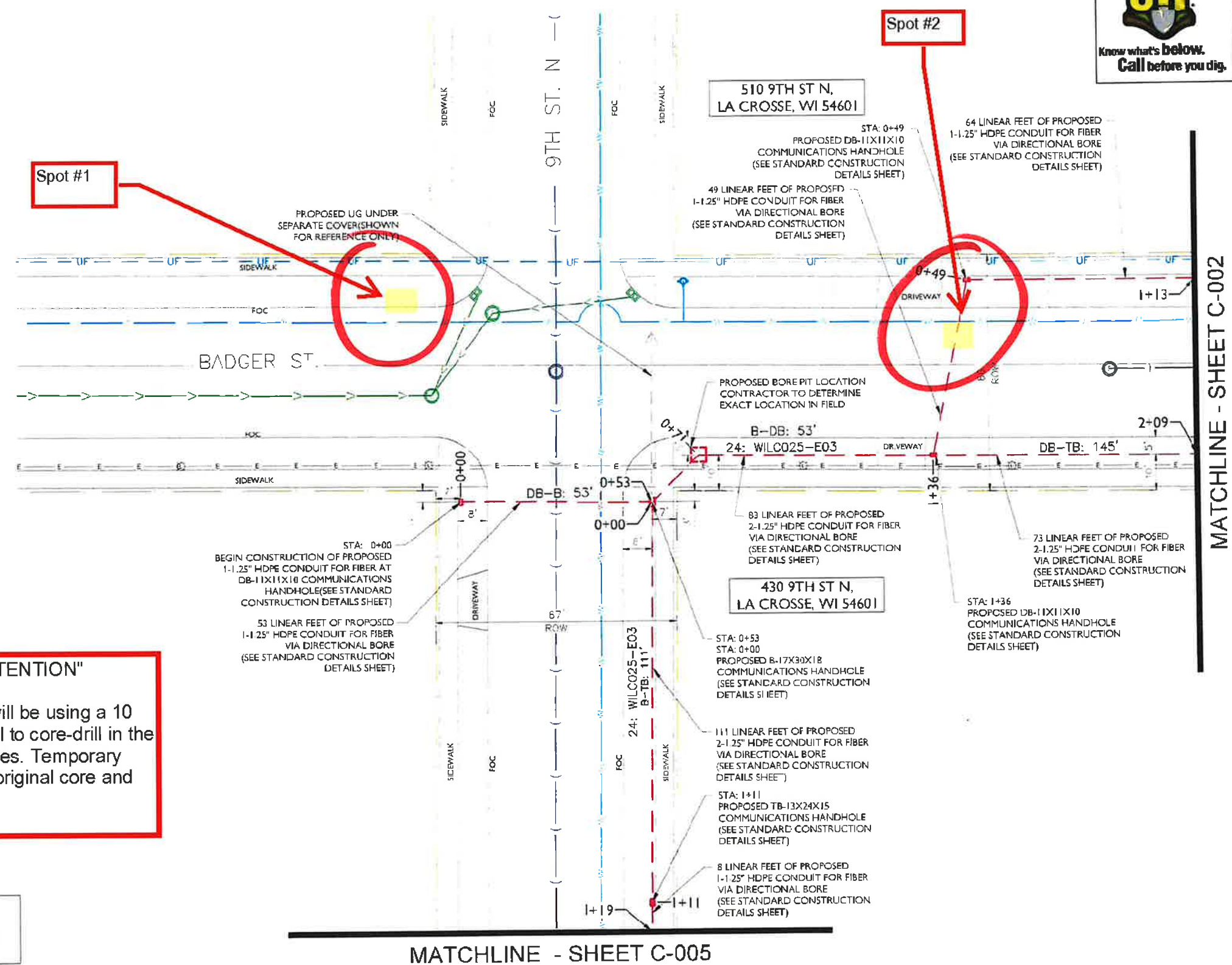




metronet
3701 COMMUNICATIONS WAY
EVANSVILLE, IN, 47715

Fullerton
1100 E WOODFIELD ROAD, SUITE 500
SCHAMBURG ILLINOIS 60173
TEL. 847.908.8400
DESIGN FIRM NO. 184.008702-0006
www.fullerton-us.com



Spot #1

Spot #2

"ATTENTION"
Contractors will be using a 10 inch core-drill to core-drill in the road for utilities. Temporary repairs with original core and utility bond.

NOTE:
PRIOR TO CONSTRUCTION ALL STREET LIGHT WIRING MUST BE PROPERLY LOCATED.

- NOTE:**
- PROPOSED CONDUIT SHALL AVOID EXISTING SEEPAGE BEDS
 - BURY AT 24" MIN. UNDER SOFT SURFACE-BURY AT 36" MIN. UNDER HARD SURFACE
 - MAINTAIN 1' FROM BACK OF SIDEWALK, WHEN APPLICABLE.

NOTE:
METRONET WILL MAINTAIN 5' CLEARANCE FROM EXISTING INLETS, MANHOLES, VALVES, AND FIRE HYDRANTS & 7.5' CLEARANCE FROM MANHOLES AND CATCH BASINS.



REV	DATE	DESCRIPTION	BY
A	10/04/23	ISSUED FOR REVIEW	NS

I HEREBY CERTIFY THAT THESE DRAWINGS WERE PREPARED BY ME OR UNDER MY DIRECT SUPERVISION AND CONTROL, AND TO THE BEST OF MY KNOWLEDGE AND BELIEF COMPLY WITH THE REQUIREMENTS OF ALL APPLICABLE CODES.

TASK NAME
WILC025-U-S3

TASK DESCRIPTION
FIBER OPTIC CONDUIT PLACEMENT

PROJECT AREA
LACROSSE, WI, USA

SHEET SCALE
1" = 30'-0"

SHEET TITLE
DESIGN LAYOUT

GRID NUMBER

SHEET NUMBER
C-001

"ATTENTION"
 Contractors will be using a 10 inch core-drill to core-drill in the road for utilities. Temporary repairs with original core and utility bond.

metronet
 3701 COMMUNICATIONS WAY
 EVANSVILLE, IN. 47715

Fullerton
 1100 E WOODFIELD ROAD, SUITE 500
 SCHAUMBURG, ILLINOIS 60173
 TEL: 847-908-8400
 DESIGN FIRM NO. 184-008202-0006
 www.fullerton-us.com

REV	DATE	DESCRIPTION	BY
A	10/04/23	ISSUED FOR REVIEW	NS

I HEREBY CERTIFY THAT THESE DRAWINGS WERE PREPARED BY ME OR UNDER MY DIRECT SUPERVISION AND CONTROL, AND TO THE BEST OF MY KNOWLEDGE AND BELIEF COMPLY WITH THE REQUIREMENTS OF ALL APPLICABLE CODES

TASK NAME
WILCO25-U-S3

TASK DESCRIPTION
FIBER OPTIC CONDUIT PLACEMENT

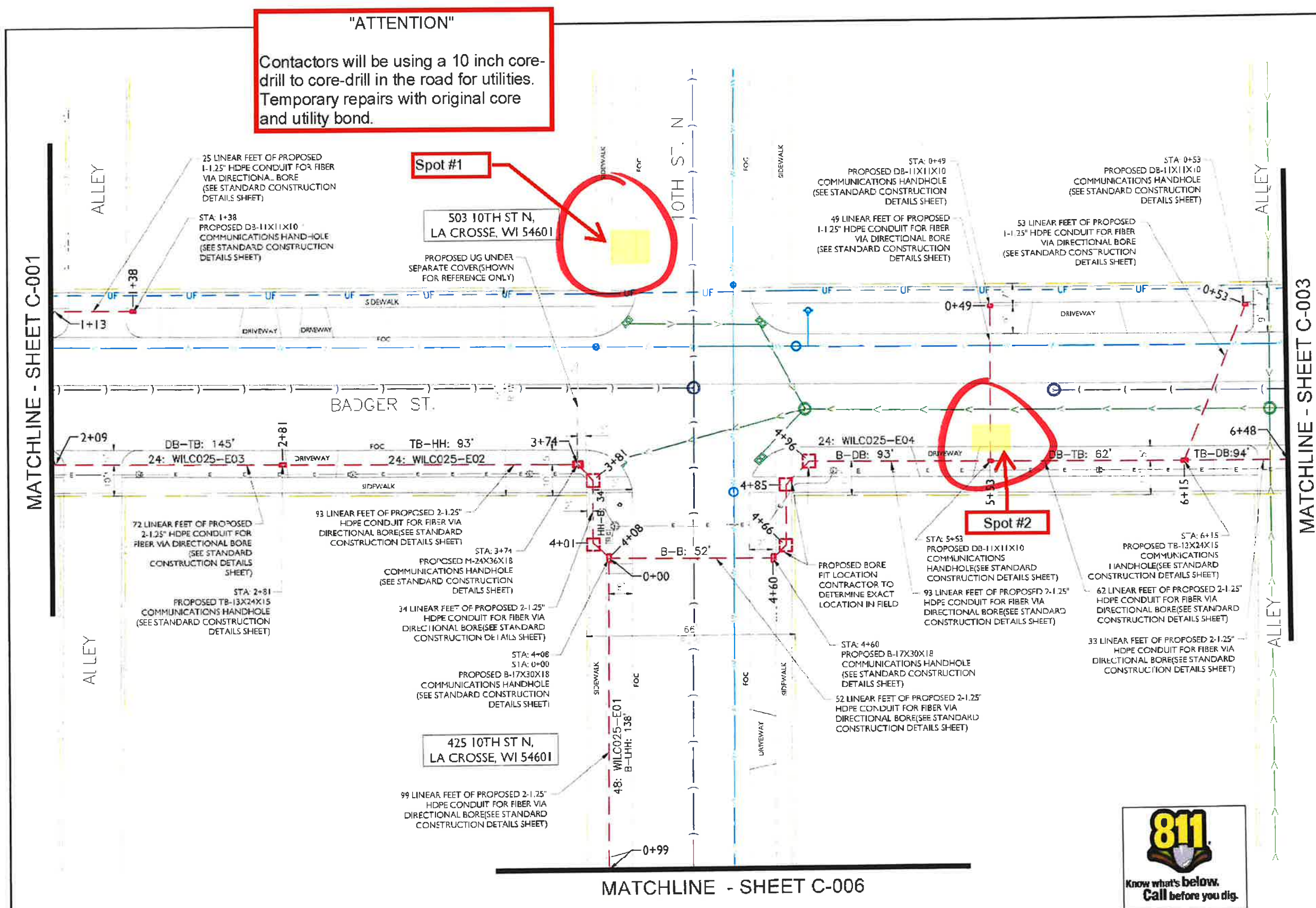
PROJECT AREA
 LACROSSE, WI, USA

SHEET SCALE
 1" = 30'-0"

SHEET TITLE
DESIGN LAYOUT

GRID NUMBER

SHEET NUMBER
C-002



NOTE:
 • PROPOSED CONDUIT SHALL AVOID EXISTING SEEPAGE BEDS
 • BURY AT 24" MIN. UNDER SOFT SURFACE-BURY AT 36" MIN. UNDER HARD SURFACE
 • MAINTAIN 1' FROM BACK OF SIDEWALK, WHEN APPLICABLE.

NOTE:
PRIOR TO CONSTRUCTION ALL STREET LIGHT WIRING MUST BE PROPERLY LOCATED.

NOTE:
 METRONET WILL MAINTAIN 5' CLEARANCE FROM EXISTING INLETS, MANHOLES, VALVES, AND FIRE HYDRANTS & 7.5' CLEARANCE FROM MANHOLES AND CATCH BASINS.



REV	DATE	DESCRIPTION	BY
A	10/06/23	ISSUED FOR REVIEW	NS

I HEREBY CERTIFY THAT THESE DRAWINGS WERE PREPARED BY ME OR UNDER MY DIRECT SUPERVISION AND CONTROL AND TO THE BEST OF MY KNOWLEDGE AND BELIEF COMPLY WITH THE REQUIREMENTS OF ALL APPLICABLE CODES

TASK NAME
WILC025-U-S3

TASK DESCRIPTION
FIBER OPTIC CONDUIT PLACEMENT

PROJECT AREA
LACROSSE, WI, USA

SHEET SCALE
1" = 30'-0"

SHEET TITLE
DESIGN LAYOUT

GRID NUMBER

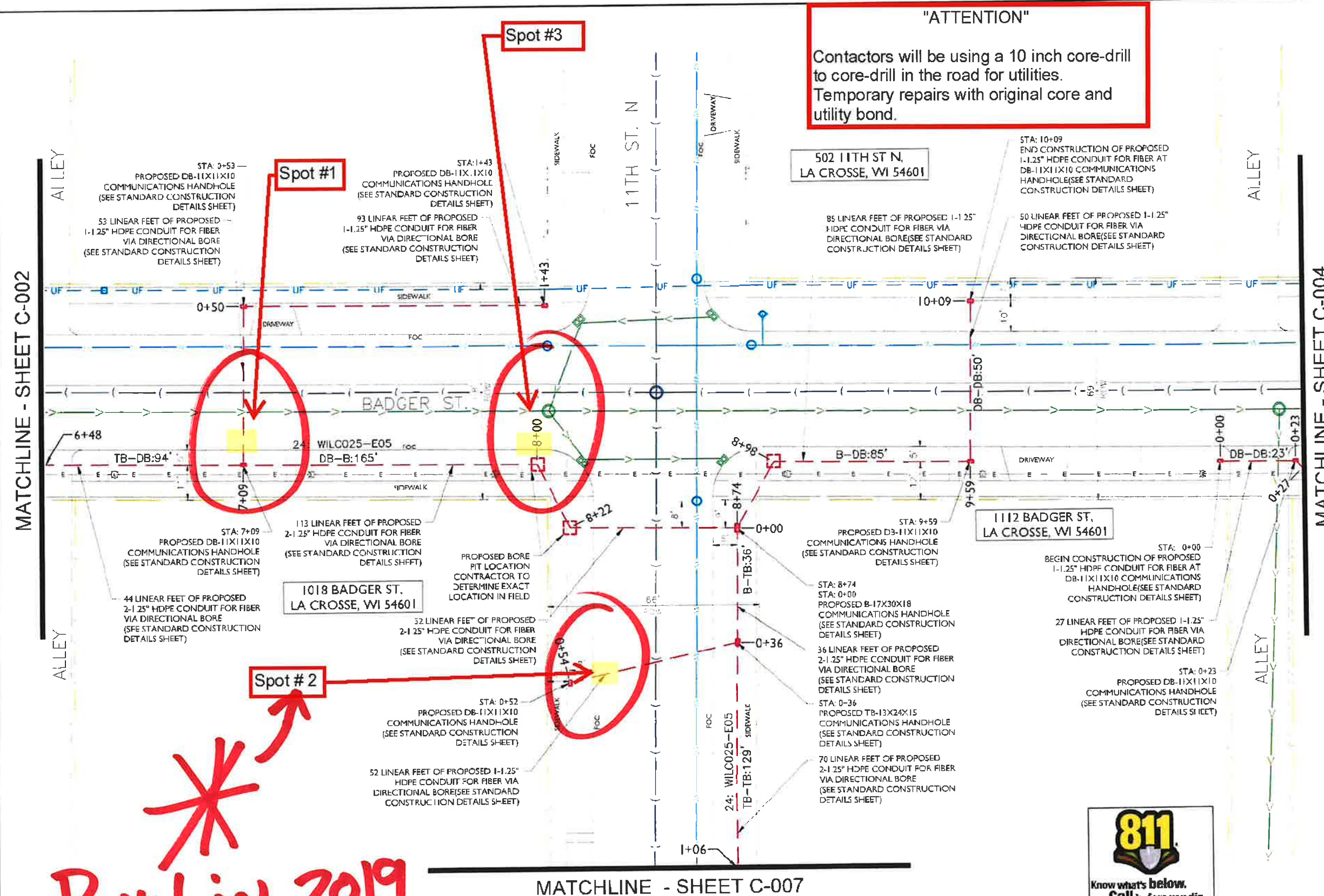
SHEET NUMBER
C-003

"ATTENTION"
Contractors will be using a 10 inch core-drill to core-drill in the road for utilities. Temporary repairs with original core and utility bond.

502 11TH ST N,
LA CROSSE, WI 54601

1112 BADGER ST,
LA CROSSE, WI 54601

1018 BADGER ST,
LA CROSSE, WI 54601



NOTE:
 • PROPOSED CONDUIT SHALL AVOID EXISTING SEEPAGE BEDS
 • BURY AT 24" MIN. UNDER SOFT SURFACE-BURY AT 36" MIN. UNDER HARD SURFACE
 • MAINTAIN 1' FROM BACK OF SIDEWALK, WHEN APPLICABLE.

NOTE:
PRIOR TO CONSTRUCTION ALL STREET LIGHT WIRING MUST BE PROPERLY LOCATED.

NOTE:
 METRONET WILL MAINTAIN 5' CLEARANCE FROM EXISTING INLETS, MANHOLES, VALVES, AND FIRE HYDRANTS & 7.5' CLEARANCE FROM MANHOLES AND CATCH BASINS.

Paved in 2019

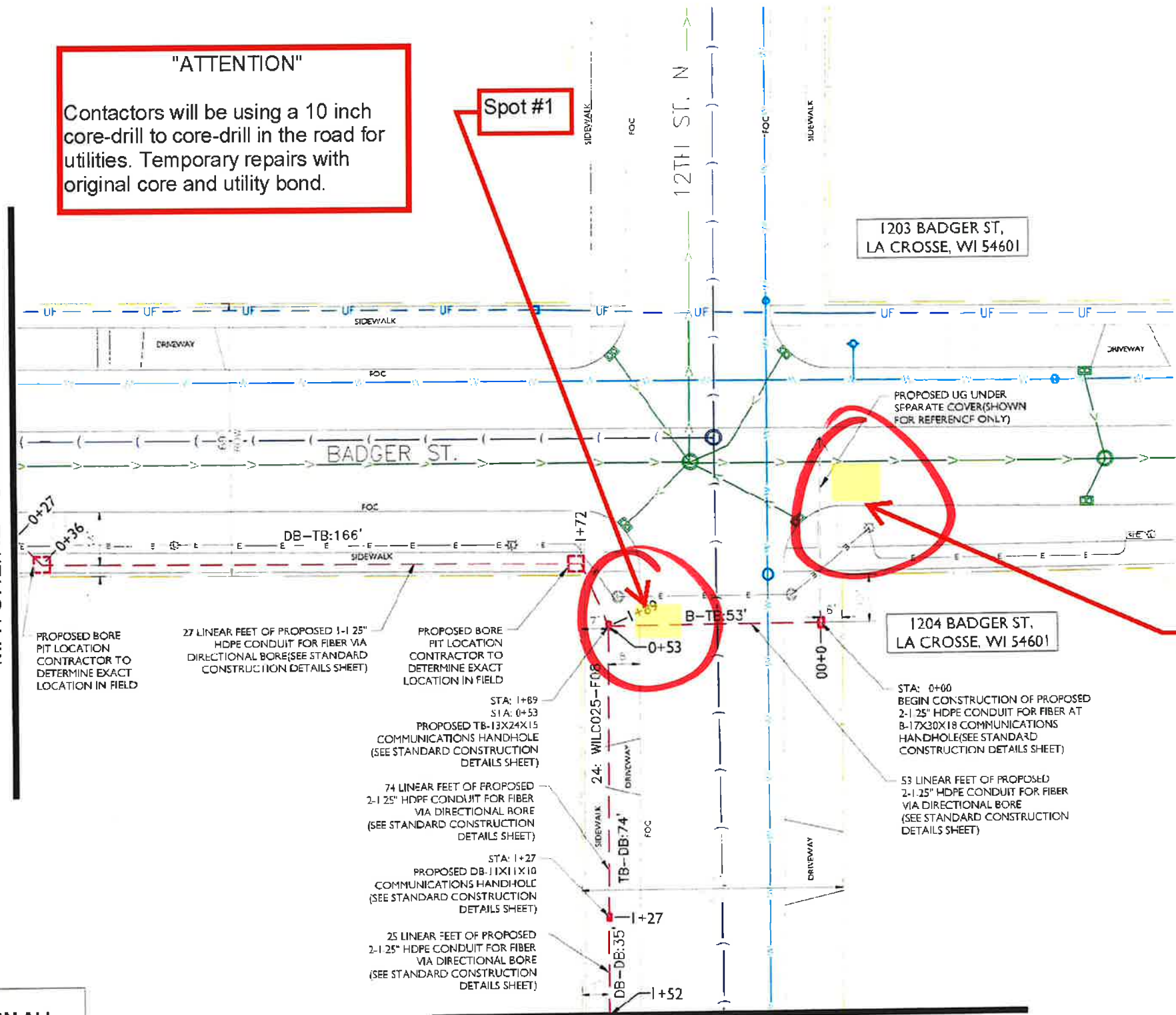


metronet
3701 COMMUNICATIONS WAY
EVANSVILLE, IN. 47715

Fullerton
1100 E WOODFIELD ROAD, SUITE 500
SCHALMBURG, ILLINOIS 60173
TEL: 847-908-8400
DESIGN FIRM NO. 184 008202-0006
www.fullerton-us.com

"ATTENTION"
Contractors will be using a 10 inch core-drill to core-drill in the road for utilities. Temporary repairs with original core and utility bond.

MATCHLINE - SHEET C-003



1203 BADGER ST,
LA CROSSE, WI 54601

1204 BADGER ST,
LA CROSSE, WI 54601

Spot #2

REV	DATE	DESCRIPTION	BY
A	10/04/23	ISSUED FOR REVIEW	NS

I HEREBY CERTIFY THAT THESE DRAWINGS WERE PREPARED BY ME OR UNDER MY DIRECT SUPERVISION AND CONTROL, AND TO THE BEST OF MY KNOWLEDGE AND BELIEF COMPLY WITH THE REQUIREMENTS OF ALL APPLICABLE CODES

TASK NAME
WILC025-U-S3

TASK DESCRIPTION
FIBER OPTIC CONDUIT PLACEMENT

PROJECT AREA
LACROSSE, WI, USA

SHEET SCALE
1" = 30'-0"

SHEET TITLE
DESIGN LAYOUT

GRID NUMBER

SHEET NUMBER
C-004

NOTE:
PRIOR TO CONSTRUCTION ALL STREET LIGHT WIRING MUST BE PROPERLY LOCATED.

- NOTE:
- PROPOSED CONDUIT SHALL AVOID EXISTING SEEPAGE BEDS
 - BURY AT 24" MIN. UNDER SOFT SURFACE-BURY AT 36" MIN. UNDER HARD SURFACE
 - MAINTAIN 1' FROM BACK OF SIDEWALK, WHEN APPLICABLE.

NOTE:
METRONET WILL MAINTAIN 5' CLEARANCE FROM EXISTING INLETS, MANHOLES, VALVES, AND FIRE HYDRANTS & 7.5' CLEARANCE FROM MANHOLES AND CATCH BASINS.



MATCHLINE - SHEET C-008

MATCHLINE - SHEET C-002



metronet
3701 COMMUNICATIONS WAY
EVANSVILLE, IN, 47715

Fullerton
CONSULTING ENGINEERS

1100 E WOODFIELD ROAD, SUITE 500
SC-HAUMBURG, ILLINOIS 60173
TEL: 847-908-8400
DESIGN FIRM NO. 184 008202-0006
www.fullerton-us.com

39 LINEAR FEET OF PROPOSED 2-1.25" HDPE CONDUIT FOR FIBER VIA DIRECTIONAL BORE(SEE STANDARD CONSTRUCTION DETAILS SHEET)

STA: 1+38 PROPOSED LHH-30X48X24 COMMUNICATIONS HANDHOLE (SEE STANDARD CONSTRUCTION DETAILS SHEET)

STA: 0+54 PROPOSED DB-11X11X10 COMMUNICATIONS HANDHOLE (SEE STANDARD CONSTRUCTION DETAILS SHEET)

54 LINEAR FEET OF PROPOSED 1-1.25" HDPE CONDUIT FOR FIBER VIA DIRECTIONAL BORE(SEE STANDARD CONSTRUCTION DETAILS SHEET)

Spot #1

72 LINEAR FEET OF PROPOSED 2-1.25" HDPE CONDUIT FOR FIBER VIA DIRECTIONAL BORE(SEE STANDARD CONSTRUCTION DETAILS SHEET)

410 10TH ST N.
LA CROSSE, WI 54601

STA: 2+10 PROPOSED TB-13X24X15 COMMUNICATIONS HANDHOLE (SEE STANDARD CONSTRUCTION DETAILS SHEET)

411 10TH ST N.
LA CROSSE, WI 54601

96 LINEAR FEET OF PROPOSED 2-1.25" HDPE CONDUIT FOR FIBER VIA DIRECTIONAL BORE(SEE STANDARD CONSTRUCTION DETAILS SHEET)

"ATTENTION"
Contractors will be using a 10 inch core-drill to core-drill in the road for utilities. Temporary repairs with original core and utility bond.

MATCHLINE - SHEET C-010

REV	DATE	DESCRIPTION	BY
A	10/04/23	ISSUED FOR REVIEW	NS

I HEREBY CERTIFY THAT THESE DRAWINGS WERE PREPARED BY ME OR UNDER MY DIRECT SUPERVISION AND CONTROL, AND TO THE BEST OF MY KNOWLEDGE AND BELIEF COMPLY WITH THE REQUIREMENTS OF ALL APPLICABLE CODES

TASK NAME
WILC025-U-S3

TASK DESCRIPTION
FIBER OPTIC CONDUIT PLACEMENT

PROJECT AREA
LACROSSE, WI, USA

SHEET SCALE
1" = 30'-0"

SHEET TITLE
DESIGN LAYOUT

GRID NUMBER

SHEET NUMBER
C-006

- NOTE:
- PROPOSED CONDUIT SHALL AVOID EXISTING SEEPAGE BEDS
 - BURY AT 24" MIN. UNDER SOFT SURFACE-BURY AT 36" MIN. UNDER HARD SURFACE
 - MAINTAIN 1' FROM BACK OF SIDEWALK, WHEN APPLICABLE.

NOTE:
METRONET WILL MAINTAIN 5' CLEARANCE FROM EXISTING INLETS, MANHOLES, VALVES, AND FIRE HYDRANTS & 7.5' CLEARANCE FROM MANHOLES AND CATCH BASINS.



MATCHLINE - SHEET C-003



metronet

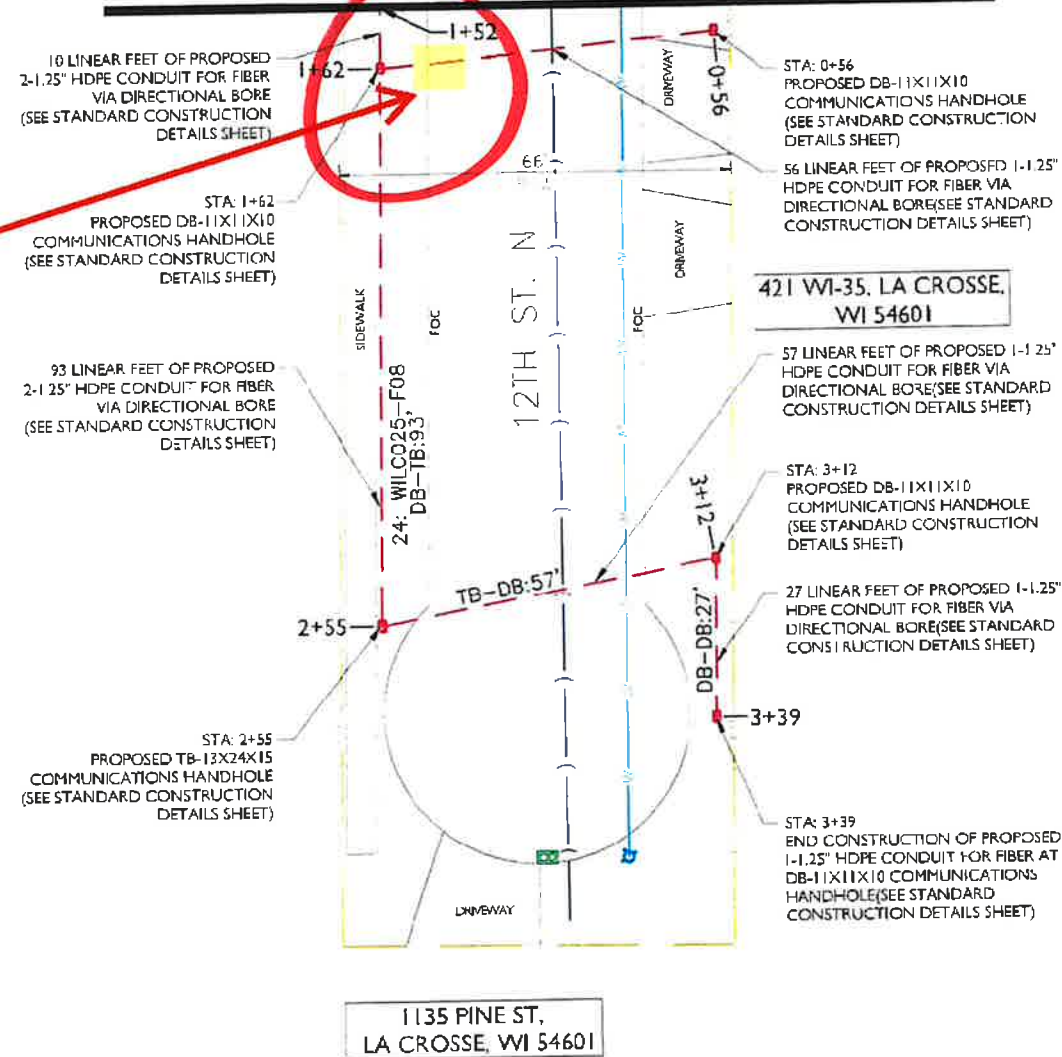
3701 COMMUNICATIONS WAY
EVANSVILLE, IN. 47715

Fullerton

1130 E WOODFIELD ROAD, SUITE 500
SCHAUMBURG, ILLINOIS 60173
TEL: 847-908-8400
DESIGN FIRM NO. 184008202-0006
www.fullerton-us.com

Spot #1

"ATTENTION"
Contractors will be using a 10 inch core-drill to core-drill in the road for utilities. Temporary repairs with original core and utility bond.



1135 PINE ST,
LA CROSSE, WI 54601

REV	DATE	DESCRIPTION	BY
A	10/04/23	ISSUED FOR REVIEW	NS

I HEREBY CERTIFY THAT THESE DRAWINGS WERE PREPARED BY ME OR UNDER MY DIRECT SUPERVISION AND CONTROL, AND TO THE BEST OF MY KNOWLEDGE AND BELIEF COMPLY WITH THE REQUIREMENTS OF ALL APPLICABLE CODES.

TASK NAME
WILC025-U-S3

TASK DESCRIPTION
FIBER OPTIC CONDUIT PLACEMENT

PROJECT AREA
LACROSSE, WI, USA

SHEET SCALE
1" = 30'-0"

SHEET TITLE
DESIGN LAYOUT

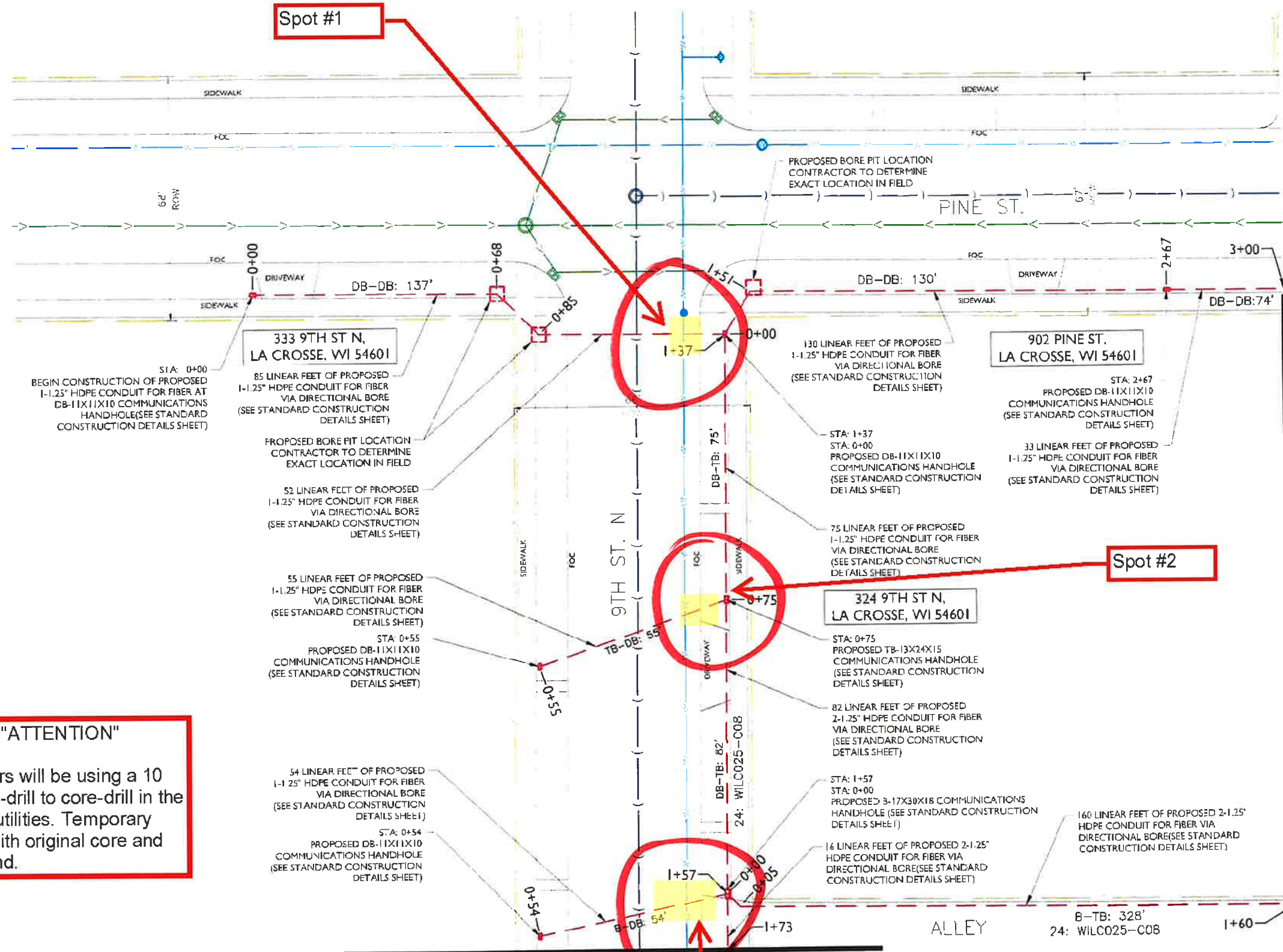
GRID NUMBER

SHEET NUMBER
C-008

- NOTE:
- PROPOSED CONDUIT SHALL AVOID EXISTING SEEPAGE BEDS
 - BURY AT 24" MIN. UNDER SOFT SURFACE-BURY AT 36" MIN. UNDER HARD SURFACE
 - MAINTAIN 1' FROM BACK OF SIDEWALK, WHEN APPLICABLE.

NOTE:
METRONET WILL MAINTAIN 5' CLEARANCE FROM EXISTING INLETS, MANHOLES, VALVES, AND FIRE HYDRANTS & 7.5' CLEARANCE FROM MANHOLES AND CATCH BASINS.





"ATTENTION"
 Contractors will be using a 10 inch core-drill to core-drill in the road for utilities. Temporary repairs with original core and utility bond.

- NOTE:
- PROPOSED CONDUIT SHALL AVOID EXISTING SEEPAGE BEDS
 - BURY AT 24" MIN. UNDER SOFT SURFACE-BURY AT 36" MIN. UNDER HARD SURFACE
 - MAINTAIN 1' FROM BACK OF SIDEWALK, WHEN APPLICABLE.

NOTE:
 METRONET WILL MAINTAIN 5' CLEARANCE FROM EXISTING INLETS, MANHOLES, VALVES, AND FIRE HYDRANTS & 7.5' CLEARANCE FROM MANHOLES AND CATCH BASINS.

metronet
 3701 COMMUNICATIONS WAY
 EVANSVILLE, IN 47715

Fullerton
 1100 E. WOODFIELD ROAD, SUITE 500
 SCHAUMBURG, ILLINOIS 60173
 TEL: 847-908-8400
 DESIGN FIRM NO. 184008202-0006
 www.fullerton-us.com

REV	DATE	DESCRIPTION	BY
A	10/04/23	ISSUED FOR REVIEW	NS

I HEREBY CERTIFY THAT THESE DRAWINGS WERE PREPARED BY ME OR UNDER MY DIRECT SUPERVISION AND CONTROL, AND TO THE BEST OF MY KNOWLEDGE AND BELIEF COMPLY WITH THE REQUIREMENTS OF ALL APPLICABLE CODES

TASK NAME
WILC025-U-S3

TASK DESCRIPTION
FIBER OPTIC CONDUIT PLACEMENT

PROJECT AREA
 LACROSSE, WI, USA

SHEET SCALE
 1" = 30'-0"

SHEET TITLE
 DESIGN LAYOUT

CRID NUMBER

SHEET NUMBER
 C-009

MATCHLINE - SHEET C-010

MATCHLINE - SHEET C-013



REV	DATE	DESCRIPTION	BY
A	10/04/23	ISSUED FOR REVIEW	NS

HEREBY CERTIFY THAT THESE DRAWINGS WERE PREPARED BY ME OR UNDER MY DIRECT SUPERVISION AND CONTROL, AND TO THE BEST OF MY KNOWLEDGE AND BELIEF COMPLY WITH THE REQUIREMENTS OF ALL APPLICABLE CODES.

TASK NAME	WILC025-U-S3
-----------	--------------

TASK DESCRIPTION	FIBER OPTIC CONDUIT PLACEMENT
------------------	-------------------------------

PROJECT AREA	LACROSSE, WI, USA
--------------	-------------------

SHEET SCALE	1" = 30'-0"
-------------	-------------

SHEET TITLE	DESIGN LAYOUT
-------------	---------------

GRID NUMBER	
-------------	--

SHEET NUMBER	C-010
--------------	-------

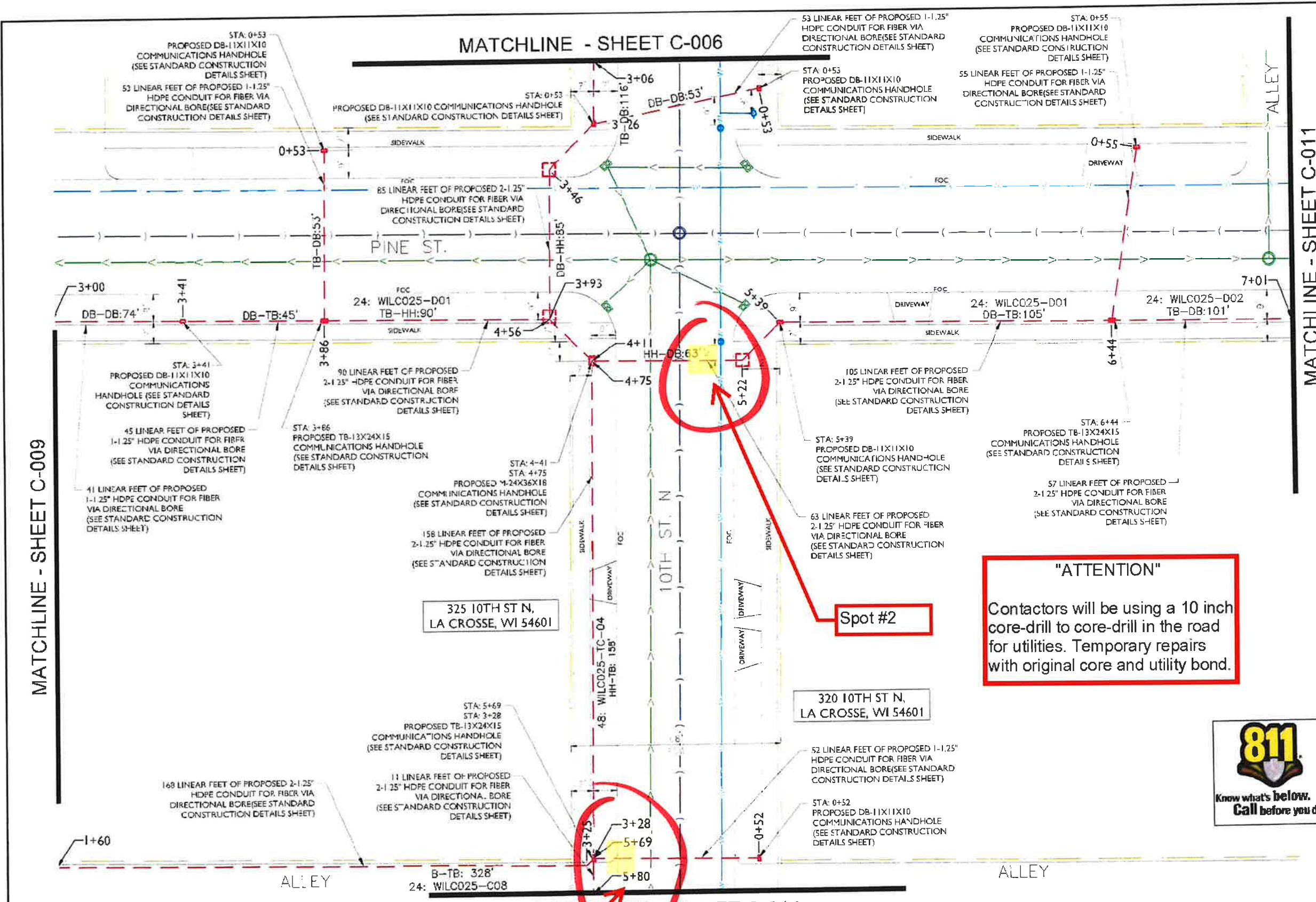


MATCHLINE - SHEET C-006

MATCHLINE - SHEET C-011

MATCHLINE - SHEET C-009

MATCHLINE - SHEET C-014



"ATTENTION"
Contractors will be using a 10 inch core-drill to core-drill in the road for utilities. Temporary repairs with original core and utility bond.

Spot #2

Spot #1

- NOTE:
- PROPOSED CONDUIT SHALL AVOID EXISTING SEEPAGE BEDS
 - BURY AT 24" MIN. UNDER SOFT SURFACE-BURY AT 36" MIN. UNDER HARD SURFACE
 - MAINTAIN 1' FROM BACK OF SIDEWALK, WHEN APPLICABLE.

- NOTE:
- METRONET WILL MAINTAIN 5' CLEARANCE FROM EXISTING INLETS, MANHOLES, VALVES, AND FIRE HYDRANTS & 7.5' CLEARANCE FROM MANHOLES AND CATCH BASINS.

*** PAVED IN 2019**

metronet

3701 COMMUNICATIONS WAY
EVANSVILLE, IN, 47715

Fullerton

1100 E. WOODFIELD ROAD, SUITE 500
SCHALMBURG, IL 60173
TEL: 847-908-8400
DESIGN FIRM NO. 184 008202-0006
www.fullerton-us.com

REV	DATE	DESCRIPTION	BY
A	10/04/23	ISSUED FOR REVIEW	NS

I HEREBY CERTIFY THAT THESE DRAWINGS WERE PREPARED BY ME OR UNDER MY DIRECT SUPERVISION AND CONTROL, AND TO THE BEST OF MY KNOWLEDGE AND BELIEF COMPLY WITH THE REQUIREMENTS OF ALL APPLICABLE CODES.

TASK NAME
WILC025-U-S3

TASK DESCRIPTION
FIBER OPTIC CONDUIT PLACEMENT

PROJECT AREA
LACROSSE, WI, USA

SHEET SCALE
1" = 30'-0"

SHEET TITLE
DESIGN LAYOUT

GRD NUMBER

SHEET NUMBER
C-011



*** PAVED IN 2019**

"ATTENTION"
Contractors will be using a 10 inch core-drill to core-drill in the road for utilities. Temporary repairs with original core and utility bond.

Spot #1

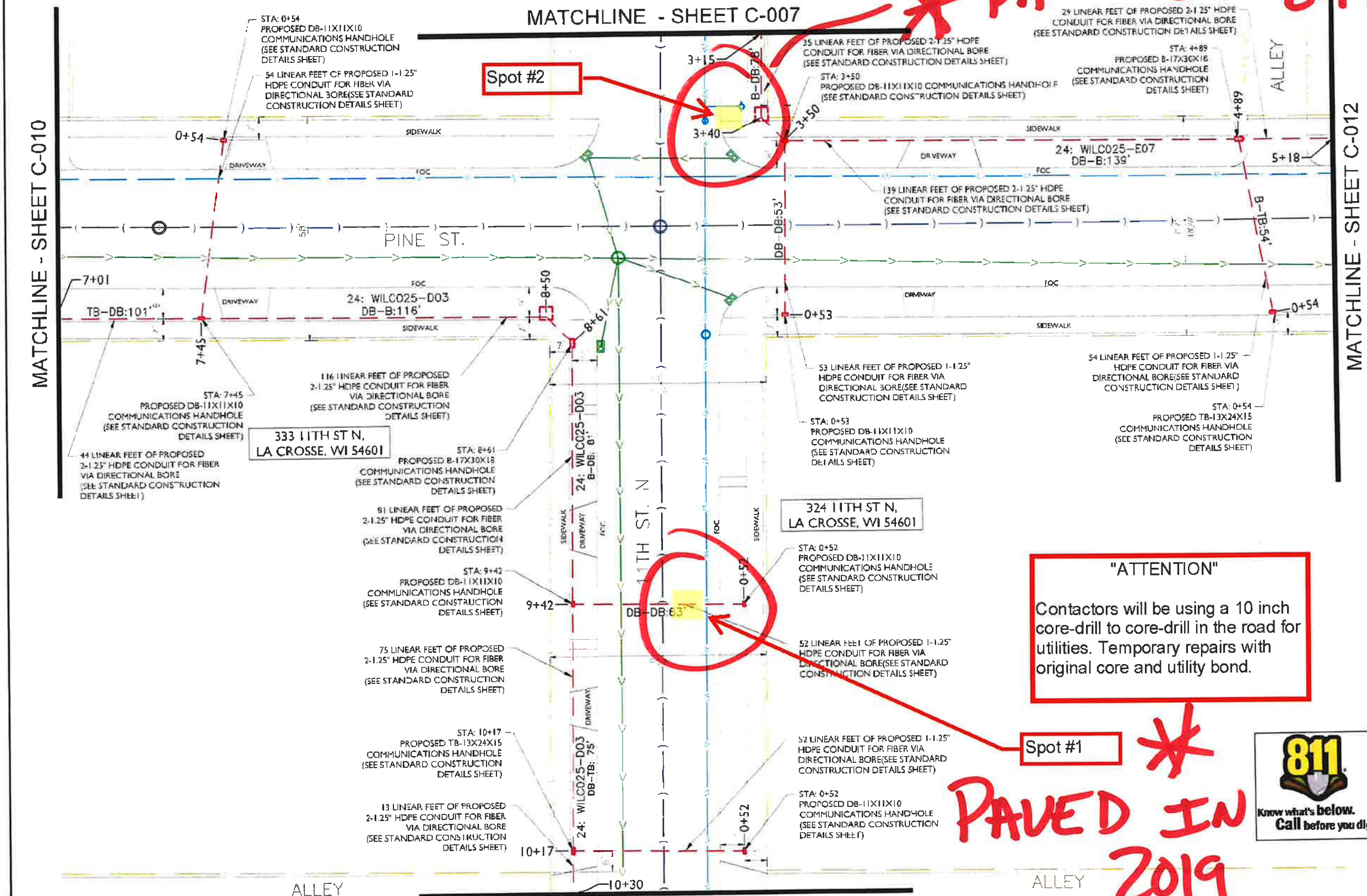
Spot #2

MATCHLINE - SHEET C-007

MATCHLINE - SHEET C-015

MATCHLINE - SHEET C-010

MATCHLINE - SHEET C-012



- NOTE:
- PROPOSED CONDUIT SHALL AVOID EXISTING SEEPAGE BEDS
 - BURY AT 24" MIN. UNDER SOFT SURFACE-BURY AT 36" MIN. UNDER HARD SURFACE
 - MAINTAIN 1' FROM BACK OF SIDEWALK, WHEN APPLICABLE.

- NOTE:
- METRONET WILL MAINTAIN 5' CLEARANCE FROM EXISTING INLETS, MANHOLES, VALVES, AND FIRE HYDRANTS & 7.5' CLEARANCE FROM MANHOLES AND CATCH BASINS.

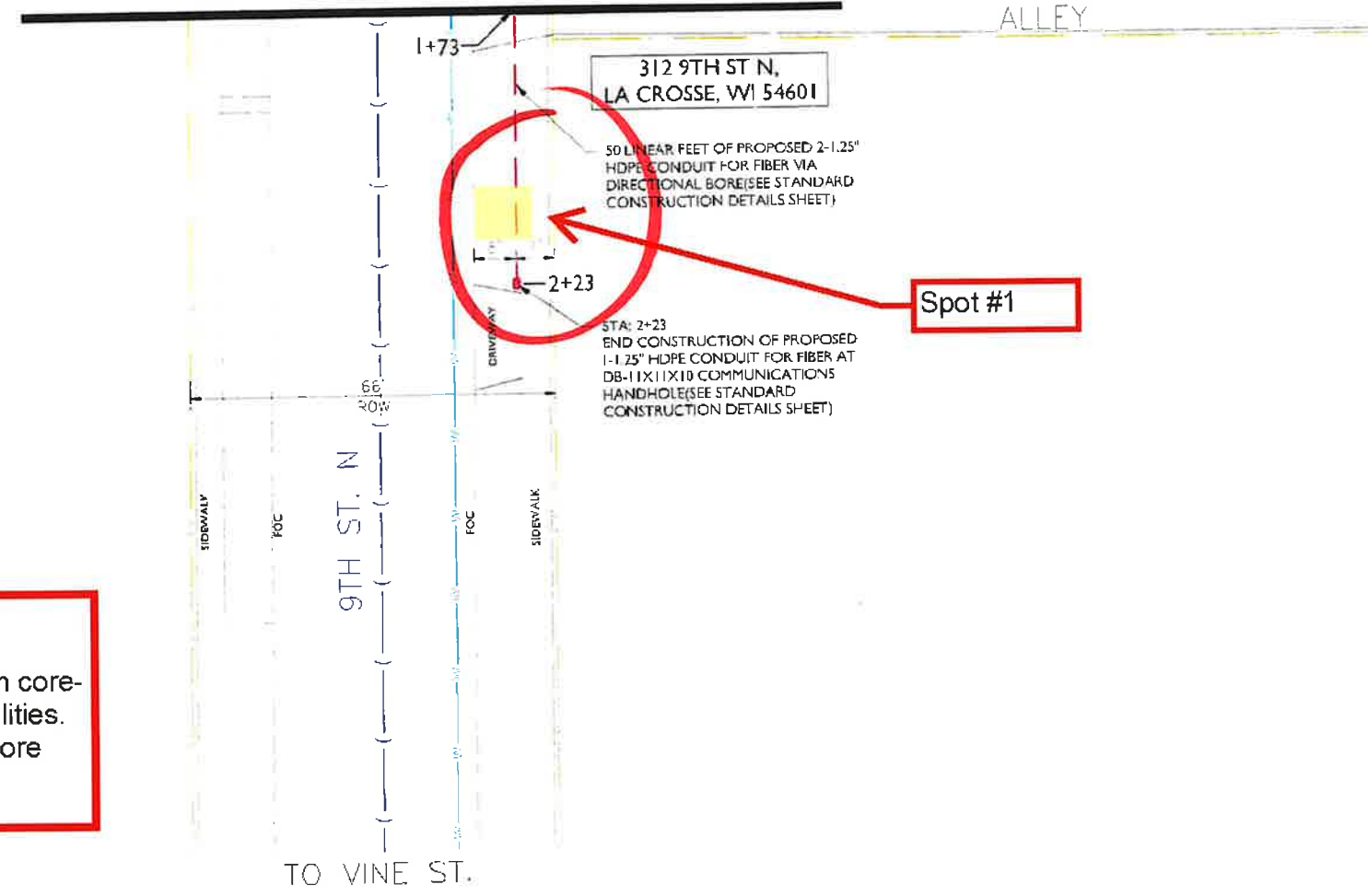


metronet
3701 COMMUNICATIONS WAY
EVANSVILLE, IN, 47715



1100 E. WOODFIELD ROAD, SUITE 500
SCHAUMBURG, ILLINOIS 60173
TEL: 847-908-8400
DESIGN FIRM NO. 184.009202-0006
www.fullerton-us.com

MATCHLINE - SHEET C-005



"ATTENTION"
Contractors will be using a 10 inch core-drill to core-drill in the road for utilities. Temporary repairs with original core and utility bond.

REV	DATE	DESCRIPTION	BY
A	10/04/23	ISSUED FOR REVIEW	NS

I HEREBY CERTIFY THAT THESE DRAWINGS WERE PREPARED BY ME OR UNDER MY DIRECT SUPERVISION AND CONTROL AND TO THE BEST OF MY KNOWLEDGE AND BELIEF COMPLY WITH THE REQUIREMENTS OF ALL APPLICABLE CODES

TASK NAME
WILC025-U-S3

TASK DESCRIPTION
FIBER OPTIC CONDUIT PLACEMENT

PROJECT AREA
LACROSSE, WI, USA

SHEET SCALE
1" = 30'-0"

SHEET TITLE
DESIGN LAYOUT

GRID NUMBER

SHEET NUMBER
C-013

- NOTE:
- PROPOSED CONDUIT SHALL AVOID EXISTING SEEPAGE BEDS
 - BURY AT 24" MIN. UNDER SOFT SURFACE-BURY AT 36" MIN. UNDER HARD SURFACE
 - MAINTAIN 1' FROM BACK OF SIDEWALK, WHEN APPLICABLE.

NOTE:
METRONET WILL MAINTAIN 5' CLEARANCE FROM EXISTING INLETS, MANHOLES, VALVES, AND FIRE HYDRANTS & 7.5' CLEARANCE FROM MANHOLES AND CATCH BASINS.

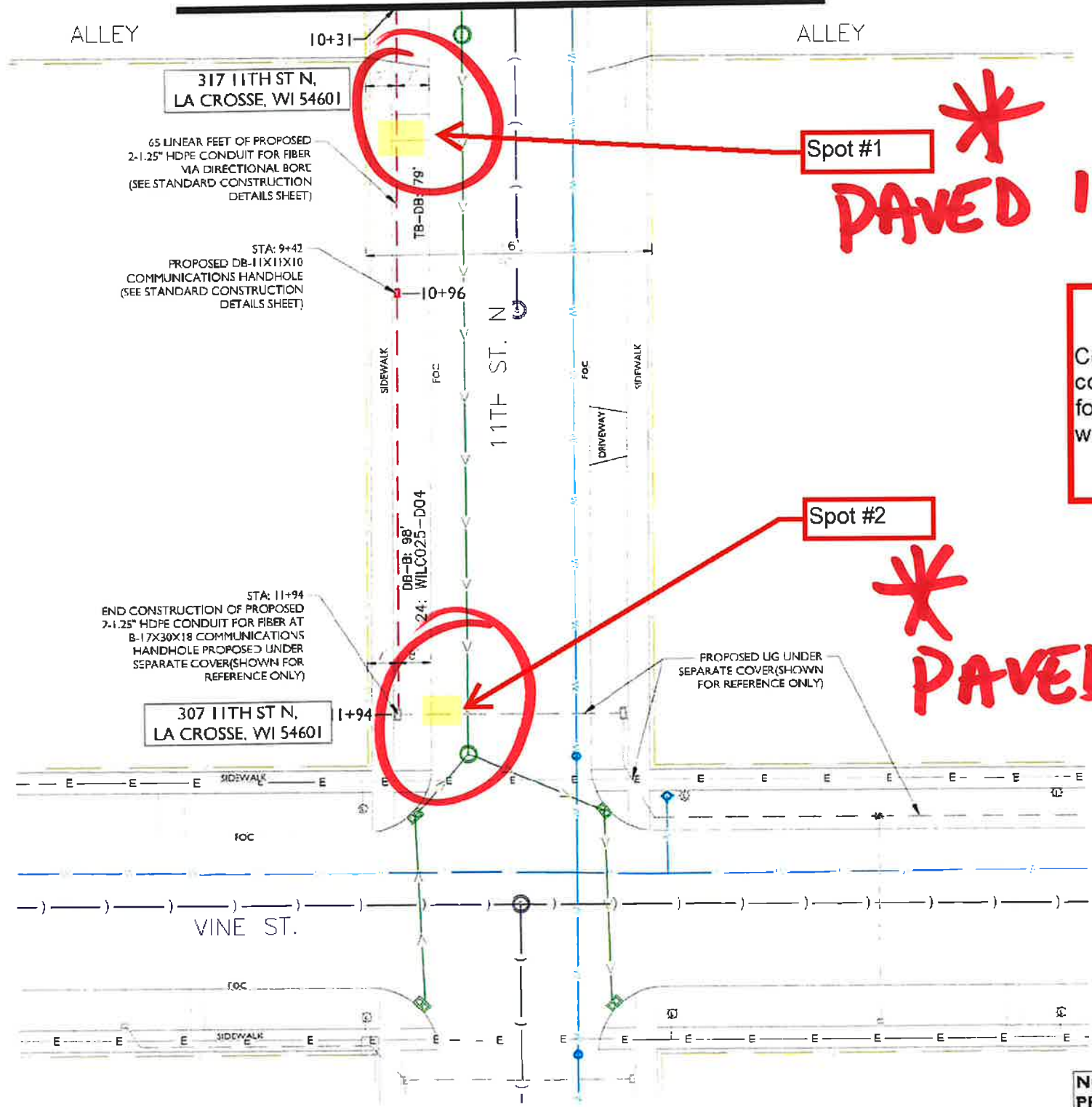


MATCHLINE - SHEET C-011



metronet
3701 COMMUNICATIONS WAY
EVANSVILLE, IN, 47715

Fullerton
1100 E WOODFIELD ROAD, SUITE 500
SCHAUMBURG, ILLINOIS 60173
TEL: 847-908-8400
DESIGN FIRM NO 18-008202-0005
www.fullerton-us.com



Spot #1

PAVED IN 2019**

"ATTENTION"

Contractors will be using a 10 inch core-drill to core-drill in the road for utilities. Temporary repairs with original core and utility bond.

Spot #2

PAVED IN 2019**

REV	DATE	DESCRIPTION	BY
A	10/04/23	ISSUED FOR REVIEW	NS

I HEREBY CERTIFY THAT THESE DRAWINGS WERE PREPARED BY ME OR UNDER MY DIRECT SUPERVISION AND CONTROL, AND TO THE BEST OF MY KNOWLEDGE AND BELIEF COMPLY WITH THE REQUIREMENTS OF ALL APPLICABLE CODES

TASK NAME
WILC025-U-S3

TASK DESCRIPTION
FIBER OPTIC CONDUIT PLACEMENT

PROJECT AREA
LACROSSE, WI, USA

SHEET SCALE
1" = 30'-0"

SHEET TITLE
DESIGN LAYOUT

GRID NUMBER

SHEET NUMBER
C-015

- NOTE:
- PROPOSED CONDUIT SHALL AVOID EXISTING SEEPAGE BEDS
 - BURY AT 24" MIN. UNDER SOFT SURFACE-BURY AT 36" MIN. UNDER HARD SURFACE
 - MAINTAIN 1' FROM BACK OF SIDEWALK, WHEN APPLICABLE.

NOTE:
METRONET WILL MAINTAIN 5' CLEARANCE FROM EXISTING INLETS, MANHOLES, VALVES, AND FIRE HYDRANTS & 7.5' CLEARANCE FROM MANHOLES AND CATCH BASINS.

