

Ebner Coulee Floodway FIRM Remapping Study – LOMR Phase

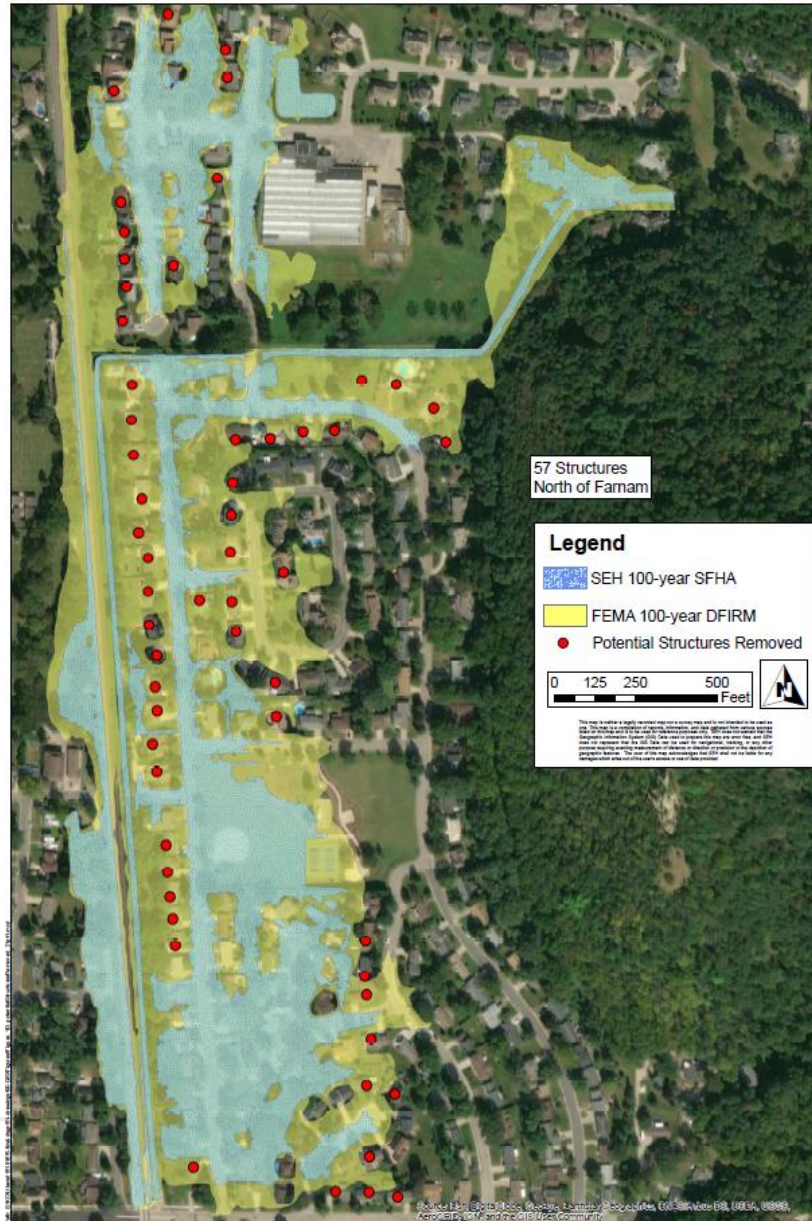
March 5, 2020



Project Update

- Since January Presentation
 - Refinement of 2D modeling
 - 500-year (0.2 %) floodplain (Not Previously Done)
 - Development and Calibration of 1D “Regulatory” model
 - LOMR Application Forms & Narrative
 - Preliminary Discussions with WiDNR
 - Still Refining 2D to 1D Modeling South of Farnam

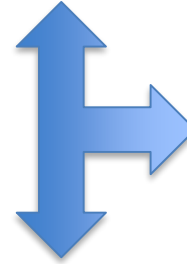
Update to Mapping – North of Farnam



Key Item – Final “Regulatory Model”

- Fitting the Model to the Regulations
- Understanding the Zoning Implications

1D Steady Flow = Maps
Similar to Current

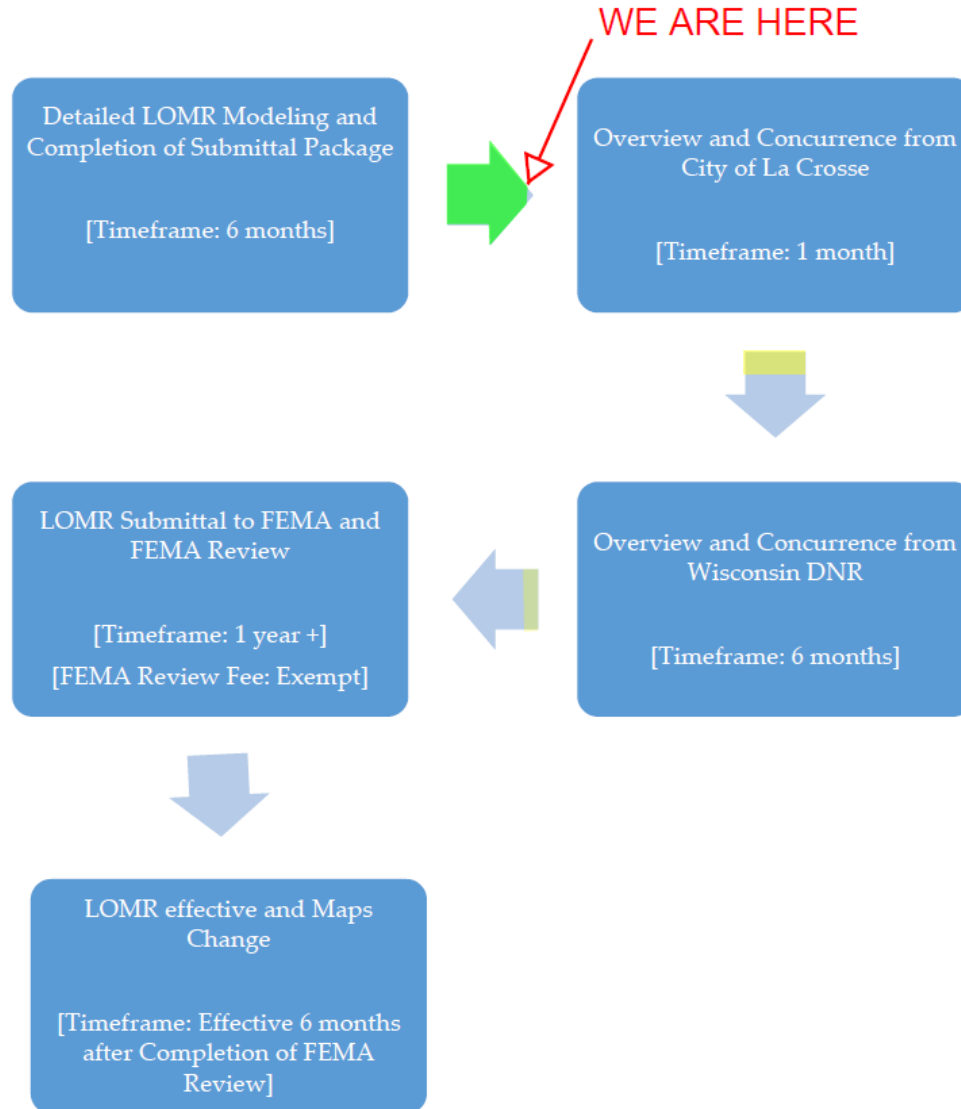


1D Unsteady Flow = All
Floodplain is Flood
Storage District

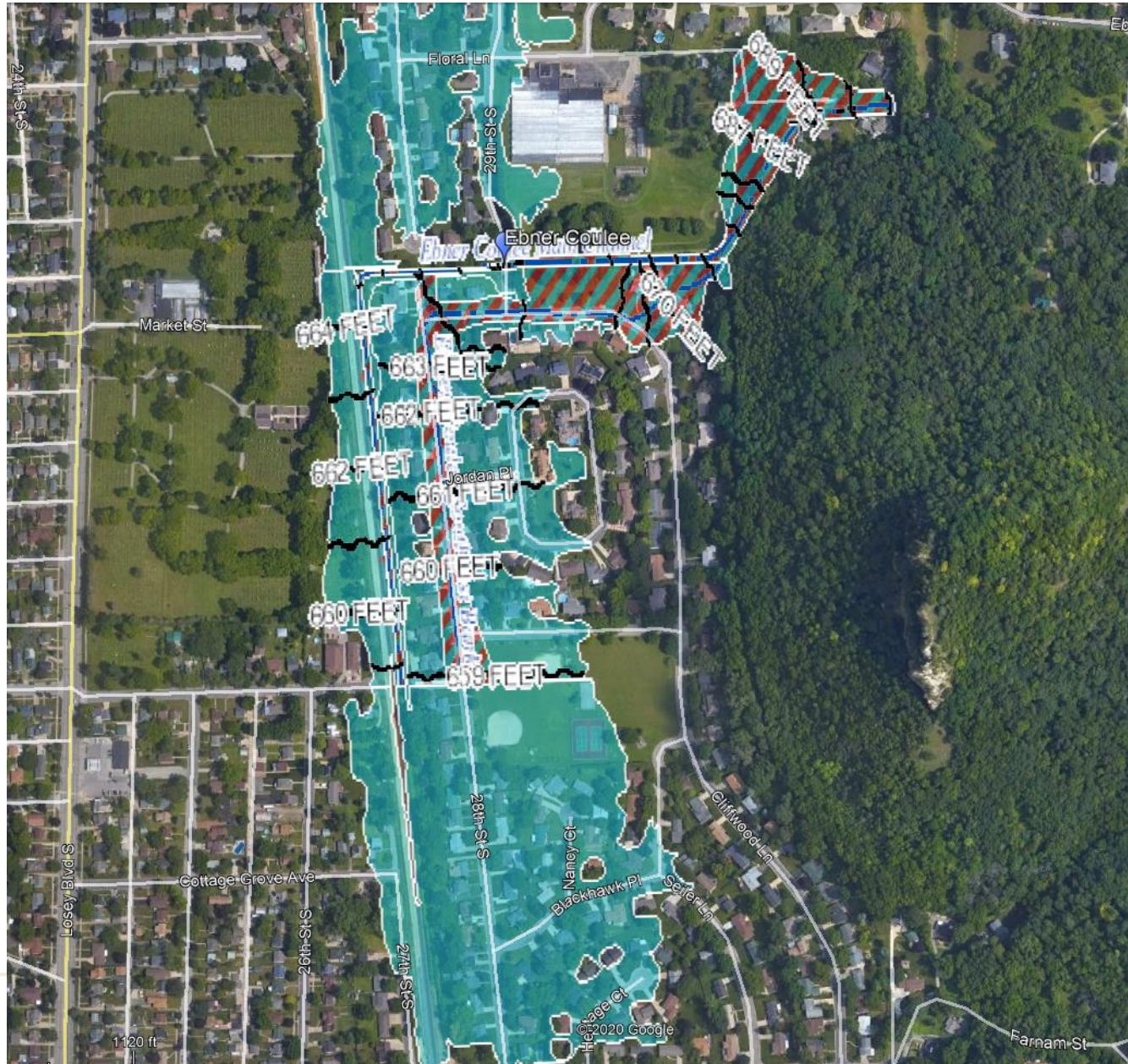
2D Flow = Does Not Fit
Current Regulatory
Framework

Timeline Update

LOMR Process Outline



Current FEMA Mapping



Questions?

- Contact Information:

Brad Woznak, PE(MN,WI,IA,NE,CO,SD,IN),PH,CFM | Senior Water Resources Engineer
SEH | 3535 Vadnais Center Drive | St. Paul, MN 55110
651.490.2125 direct | 651.470.7678 cell | 888.908.8166 fax
651.490.2000 ext.4892 New Richmond Office
www.sehinc.com
SEH—Building a Better World for All of Us™

Proposed 1-Percent Floodplain Mapping

Full page figures are provided at the end of this fact sheet which depict the proposed 1-percent floodplain mapping for the study area. Additional refinement may be necessary to ensure all FEMA LOMR standards are met and subsequent to FEMA review, but it is not anticipated that the overall mapping will vary significantly from these figures.

Summary of Potential FIRM Modifications

Potential residential structures removed from the 1-percent floodplain and mandatory flood insurance purchase requirements:

North of Farnam Street

- 39 structures south and east of the channelized portion.
- 11 structures north of the East-West channelized portion.

South of Farnam Street

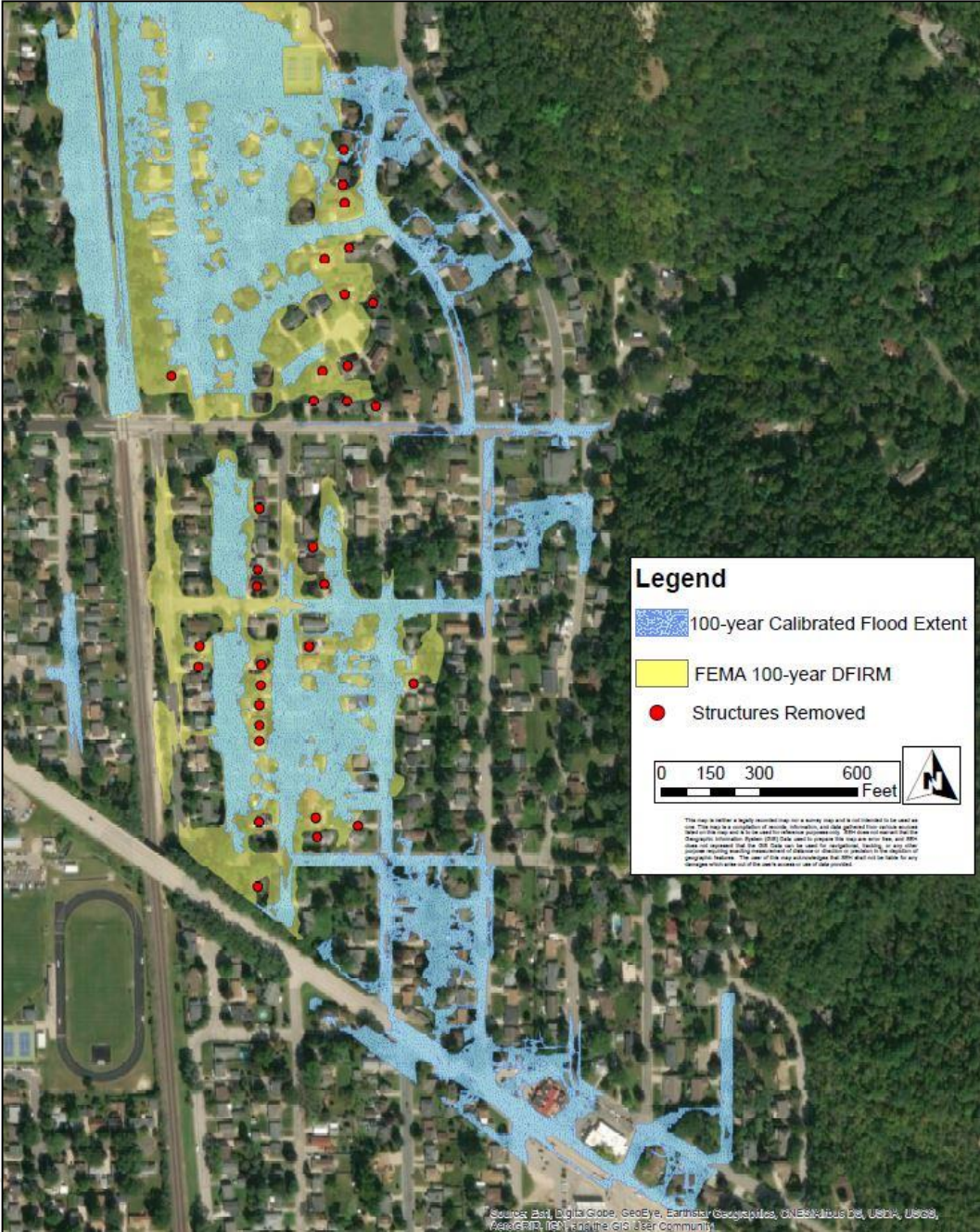
- 19 structures.



100-year Flood Extents north of Farnam Street.



100-year Flood Extents south of Farnam Street.



Source: Esri, DigitalGlobe, GeoEye, Earthstar Geographics, CNES/Airbus DS, USDA, USGS, AeroGRID, IGN, and the GIS User Community