

GENERAL NOTES:

1. CONTACT DIGGER'S HOTLINE 5 WORKING DAYS PRIOR TO THE START OF DEMOLITION/CONSTRUCTION.
2. ALL DEMOLITION MATERIALS SHALL BE REMOVED FROM THE SITE AND DISPOSED OF IN A LEGAL MANNER EXCEPT FOR THOSE ITEMS NOTED TO BE SALVAGED, WHICH SHOULD BE TURNED OVER TO THE OWNER.
3. INSTALL AND MAINTAIN ALL REQUIRED EROSION CONTROL MEASURES FOR PERIMETER PROTECTION PRIOR TO THE START OF DEMOLITION/CONSTRUCTION, IN ACCORDANCE WITH THE LOCAL AND STATE GOVERNING AUTHORITIES.
4. BIDDERS SHALL VISIT THE SITE AND REVIEW EXISTING CONDITIONS PRIOR TO THE BID DATE.
5. COORDINATE WITH THE OWNER AND LOCAL UTILITY COMPANIES TO LOCATE ANY EXISTING UTILITIES ON SITE PRIOR TO THE START OF WORK.
6. ANY EXISTING UTILITIES NOT SHOWN ON THIS DOCUMENT WHICH NEED TO BE REMOVED, RELOCATED, AND/OR ADJUSTED SHALL BE THE RESPONSIBILITY OF THE SITE GRADING CONTRACTOR AND INCLUDED IN THE BASE BID CONTRACT.
7. STRIP TOPSOIL WITHIN THE PROJECT LIMITS IN ACCORDANCE WITH THE PROJECT MANUAL SPECIFICATIONS.
8. IF STRIPPED TOPSOIL IS STOCKPILED ON SITE, SILT FENCE SHALL BE INSTALLED AROUND THE BASE OF THE STOCKPILE TO PREVENT SEDIMENT TRANSPORT.
9. PRIOR TO PERFORMING WORK WITHIN PUBLIC RIGHT OF WAYS, NOTIFY AND COORDINATE WORK WITH THE LOCAL MUNICIPALITY.
10. MAINTAIN TRAFFIC CIRCULATION TO ALL BUILDINGS SHOWN ON THIS DOCUMENT. COORDINATE ALL WORK WITH SAID BUSINESSES.

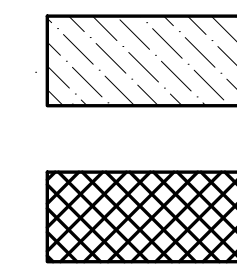
KEYNOTES:

1. EXISTING STREET LIGHT TO REMAIN
2. REMOVE AND SALVAGE CITY STANDARD TREE GRATE.
3. SAWCUT EXISTING CONCRETE WALK
4. SAWCUT EXISTING BRICK PAVING AS REQUIRED
5. SAWCUT CONCRETE CURB AND GUTTER
6. VERIFY LOCATION OF POSSIBLE ELECTRICAL CONDUIT TO BE USED FOR SITE LIGHTING CONNECTION.

DEMOLITION HATCH PATTERNS:

BRICK PAVERS, REMOVE, SALVAGE, AND REINSTALL PER SHEET C2.0 LAYOUT PLAN

CONCRETE REMOVAL



CIVIL SHEET INDEX:

- C1.0 - DEMOLITION PLAN
- C2.0 - LAYOUT PLAN
- C3.0 - GRADING PLAN
- C4.0 - EROSION CONTROL PLAN
- C5.0 - CONSTRUCTION DETAILS
- L1.0 - LANDSCAPE PLANS

BENCHMARK:

ELEVATIONS ARE REFERENCED TO NAVD 88 DATUM.

BENCHMARK #1
NORTHEAST FLANGE (TAG) BOLT ON HYDRANT LOCATED AT THE NORTHEAST QUADRANT OF THE INTERSECTION OF VINE STREET AND 6TH STREET NORTH. ELEVATION = 676.86

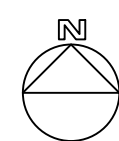
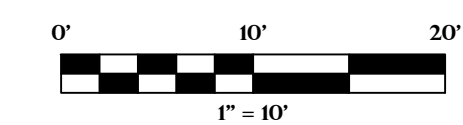
BENCHMARK #2
SOUTHEAST FLANGE BOLT ON HYDRANT LOCATED AT THE SOUTHWEST QUADRANT OF THE INTERSECTION OF VINE STREET AND 7TH STREET NORTH. ELEVATION = 680.45

UTILITY DISCLAIMER:

THE LOCATIONS, SIZES, AND TYPES OF UNDERGROUND PUBLIC AND PRIVATE UTILITIES OR SUBSTRUCTURES SHOWN HEREON WERE OBTAINED FROM VISUAL INSPECTION, FIELD MEASUREMENTS, AND/OR AS-BUILT PLANS. SANITARY SEWER AND STORM SEWER PIPE SIZES, INVERTS, DIRECTION, AND LOCATIONS BETWEEN MANHOLES ARE SUPPLEMENTED BY AS-BUILT PLANS AND/OR ESTIMATED BASED ON FIELD OBSERVATIONS. PRIOR TO CONSTRUCTION IN THE VICINITY OF ANY UTILITIES SHOWN HEREON, IT IS RECOMMENDED THAT THE LOCATIONS, DEPTHS, AND SIZES BE FIELD VERIFIED. THE LOCATIONS SHOWN HEREON ARE ONLY APPROXIMATE, WITH POSSIBILITY THAT ADDITIONAL UTILITY LINES NOT DISCOVERED, OR MARKED, DURING THE SEARCH OF RECORDS AND THE FIELD SURVEY MAY EXIST. ANY CONTRACTOR USING THE INFORMATION SHOWN HEREON IS HEREBY FOREWARNED THAT ANY EXCAVATION UPON THIS SITE MAY RESULT IN THE DISCOVERY OF ADDITIONAL UNDERGROUND UTILITIES NOT SHOWN HEREON. IN GENERAL, UNDERGROUND UTILITY LOCATIONS ARE SHOWN FROM UTILITY MARKINGS, BY OTHERS, AND/OR AS-BUILT PLANS, PROVIDED BY OTHERS. POINT OF BEGINNING MAKES NO WARRANTY OF ANY KIND, EXPRESS OR IMPLIED, WITH RESPECT TO THE EXISTING UTILITIES SHOWN HEREON, AND BELIEVES THAT THE INFORMATION CONTAINED HEREIN IS RELIABLE AND GENERALLY ACCURATE FOR THE PURPOSE INTENDED.

POINT OF BEGINNING, INC. HOLDS THE RIGHTS TO COPYRIGHT IN AND TO THESE PRINTS, DRAWINGS AND DOCUMENTS. NO REPRODUCTION, COPYING, ALTERATION, MODIFICATION, USAGE, INCORPORATION INTO OTHER DOCUMENTS OR ASSIGNMENT OF THE SAME MAY OCCUR WITHOUT THE PRIOR WRITTEN PERMISSION OF POINT OF BEGINNING, INC.

© 2022 POINT OF BEGINNING, INC.



REVISIONS

CHECKED:	DSP
DRAWN:	MAJ
DATE:	04/20/2022
PROJECT NO.	22.004

DEMOLITION PLAN

**W.T.C.
HEC LOT
CITY OF LA CROSSE
LA CROSSE CO, WI**

Civil Engineering
Land Surveying
Landscape Architecture
4941 Kirschling Court
Stevens Point, WI 54481
715.344.9999 (PH) 715.344.9922 (FX)

POB
Point of Beginning

SHEET **C1.0**

GENERAL NOTES:

- 1. CONTACT DIGGER'S HOTLINE 5 WORKING DAYS PRIOR TO THE START OF DEMOLITION/CONSTRUCTION.
2. GRADE, LINE, AND LEVEL TO BE REVIEWED IN THE FIELD BY THE CONSTRUCTION MANAGER.
3. ALL REQUIRED EROSION CONTROL MEASURES SHALL BE INSTALLED AND MAINTAINED IN ACCORDANCE WITH LOCAL MUNICIPAL AND DEPARTMENT OF NATURAL RESOURCES REGULATIONS.
4. SEE SHEET C4.0 FOR ALL REQUIRED EROSION CONTROL ELEMENTS.
5. ANY EXISTING UTILITIES NOT SHOWN ON THIS DOCUMENT WHICH NEED TO BE REMOVED, RELOCATED AND OR ADJUSTED SHALL BE THE RESPONSIBILITY OF THE SITE GRADING CONTRACTOR AND INCLUDED IN THE BASE BID CONTRACT.
6. VERIFY THE LOCATION OF ALL EXISTING UTILITIES PRIOR TO THE START OF DEMOLITION/CONSTRUCTION.
7. BIDDERS SHALL VISIT THE SITE AND REVIEW EXISTING CONDITIONS PRIOR TO THE BID DATE.
8. PRIOR TO STARTING WORK, VERIFY WITH THE LOCAL AUTHORITIES THAT ALL REQUIRED PERMITS HAVE BEEN ACQUIRED.
9. COORDINATE CONSTRUCTION IN THE RIGHT OF WAY WITH THE LOCAL AUTHORITIES.
10. PROVIDE PROPER BARRICADES, SIGNS, AND TRAFFIC CONTROL TO MAINTAIN THRU TRAFFIC ALONG ADJACENT STREETS IN ACCORDANCE WITH LOCAL MUNICIPAL REQUIREMENTS.
11. SIDEWALK JOINTS SHALL BE INSTALLED AS INDICATED OR AS APPROVED BY THE CONSTRUCTION MANAGER.
12. ALL CONCRETE SAWCUTS SHALL BE AT AN EXISTING JOINT.
13. ALL GENERAL LANDSCAPE AREAS SHALL BE SEEDED, FERTILIZED, AND CRIMP HAY MULCHED IN ACCORDANCE WITH THE PROJECT SPECIFICATIONS.

PAVEMENT HATCH PATTERNS:

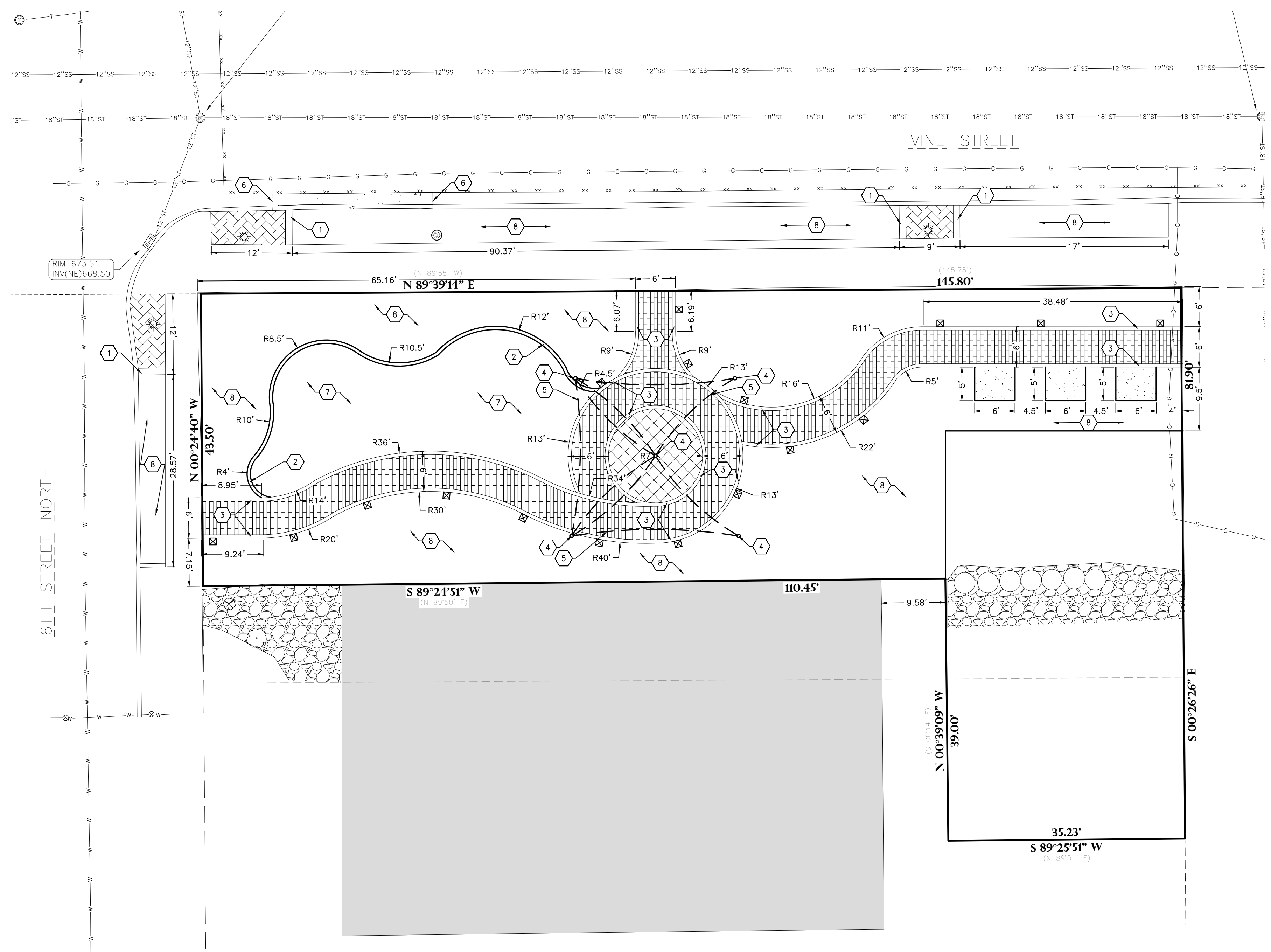
- PEDESTRIAN CONCRETE PAVERS TYPE 1
PAVERS: UNILOCK PROMENADE (4x12)
PATTERN: RUNNING BOND
COLOR: MULTIPLE
VERIFY AVAILABILITY OF EXTRA STOCK (10 PALLETS) PER WTC MAINTENANCE DEPT.
PEDESTRIAN CONCRETE PAVERS TYPE 2
PAVERS: UNILOCK PROMENADE (10x10)
PATTERN: DIAMOND
COLOR: CHARCOAL
VERIFY AVAILABILITY OF EXTRA STOCK (3 PALLETS) PER WTC MAINTENANCE DEPT.
BRICK PAVING
PER CITY BOULEVARD STANDARD
REINSTALLED SALVAGED PAVERS.
SEE C1.0 DEMOLITION PLAN
PEDESTRIAN CONCRETE PAVING
COLOR: PEBBLE BY DAVIS COLORS
FINISH: MEDIUM BROOM FINISH

LAYOUT LEGEND

- PEDESTRIAN PATHWAY LIGHT
TYPE: SELUX
MODEL: NT-3.5-LG4500-40-SV-277
SPACING: 10'-0" MIN TO 15'-0" MAX
NOTE: OWNER TO VERIFY FIXTURE TYPE

KEYNOTES:

- 1. 12" WIDE X 8" THICK CONCRETE EDGING PER CITY BOULEVARD STANDARD
2. NATURAL STONE LANDSCAPE EDGING
3. 6" WIDE CONCRETE BAND COLOR: STANDARD FINISH: MEDIUM BROOM, 90 DEGREES TO PATH OF TRAVEL
4. SHADE STRUCTURE SUPPORT POLE
5. SHADE CLOTH MANUFACTURER: SHADESAILS.COM TYPE: SKYCLIPSE 320 SIZE: 7M X 7M OWNER TO VERIFY COLOR: PER OWNER
6. CITY STANDARD CONCRETE CURB AND GUTTER
7. LAWN AREA
8. PLANTED AREA. SEE L1.0 PLANTING PLAN



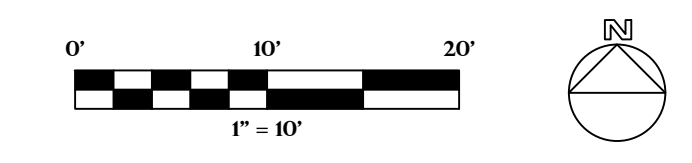
BENCHMARK:

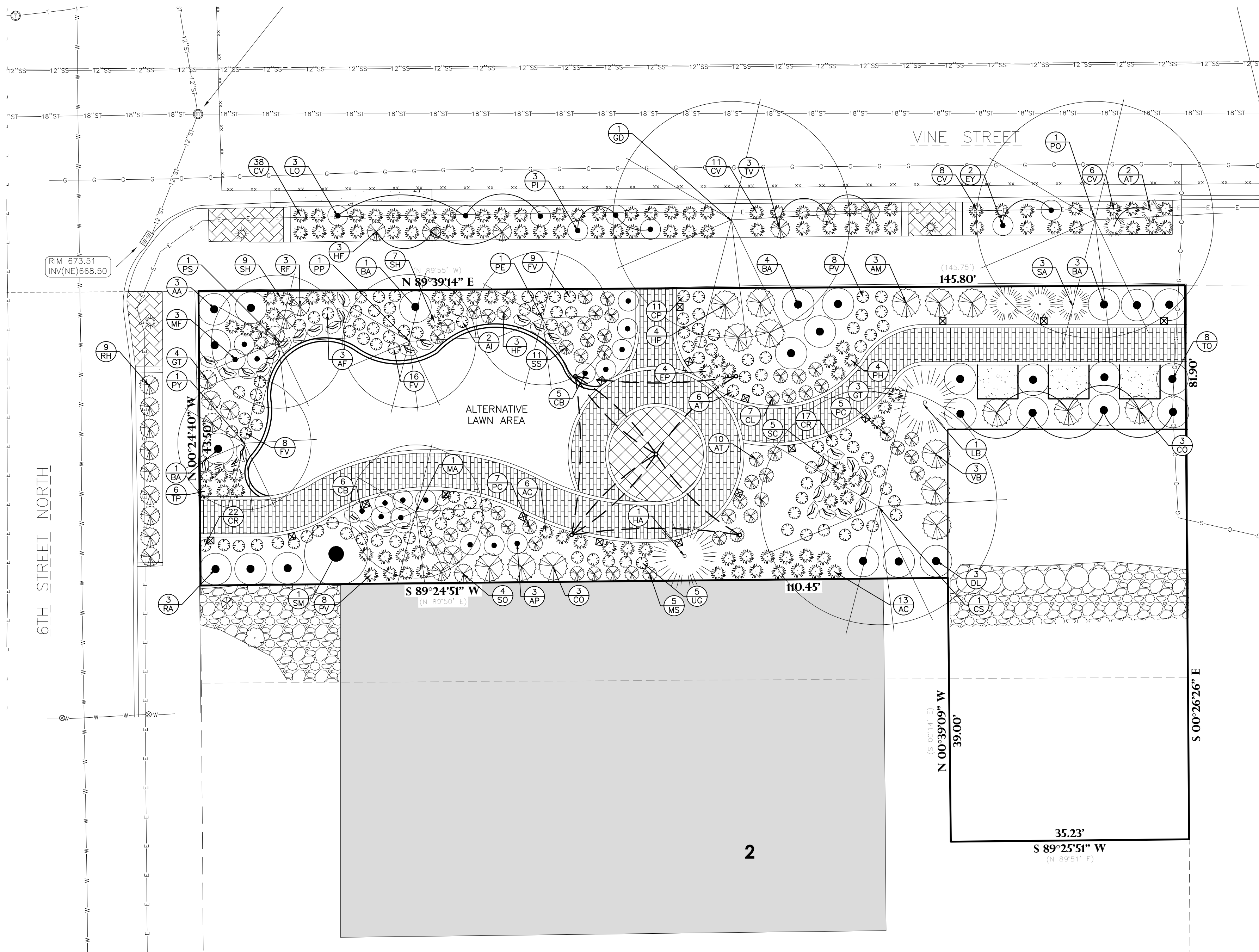
ELEVATIONS ARE REFERENCED TO NAVD 88 DATUM.
BENCHMARK #1
NORTHEAST FLANGE (TAG) BOLT ON HYDRANT LOCATED AT THE NORTHEAST QUADRANT OF THE INTERSECTION OF VINE STREET AND 6TH STREET NORTH. ELEVATION = 676.86.
BENCHMARK #2
SOUTHEAST FLANGE BOLT ON HYDRANT LOCATED AT THE SOUTHWEST QUADRANT OF THE INTERSECTION OF VINE STREET AND 7TH STREET NORTH. ELEVATION = 680.45.

UTILITY DISCLAIMER:

THE LOCATIONS, SIZES, AND TYPES OF UNDERGROUND PUBLIC AND PRIVATE UTILITIES OR SUBSTRUCTURES SHOWN HEREON WERE OBTAINED FROM VISUAL INSPECTION, FIELD MEASUREMENTS, AND/OR AS-BUILT PLANS. SANITARY SEWER AND STORM SEWER PIPE SIZES, INVERTS, DIRECTION, AND LOCATIONS BETWEEN MANHOLES ARE SUPPLEMENTED BY AS-BUILT PLANS AND/OR ESTIMATED BASED ON FIELD OBSERVATIONS. PRIOR TO CONSTRUCTION IN THE VICINITY OF ANY UTILITIES SHOWN HEREON, IT IS RECOMMENDED THAT THE LOCATIONS, DEPTHS, AND SIZES BE FIELD VERIFIED. THE LOCATIONS SHOWN HEREON ARE ONLY APPROXIMATE, WITH POSSIBILITY THAT ADDITIONAL UTILITY LINES NOT DISCOVERED, OR MARKED, DURING THE SEARCH OF RECORDS AND THE FIELD SURVEY MAY EXIST. ANY CONTRACTOR USING THE INFORMATION SHOWN HEREON IS HEREBY FOREWARNED THAT ANY EXCAVATION UPON THIS SITE MAY RESULT IN THE DISCOVERY OF ADDITIONAL UNDERGROUND UTILITIES NOT SHOWN HEREON. IN GENERAL, UNDERGROUND UTILITY LOCATIONS ARE SHOWN FROM UTILITY MARKINGS, BY OTHERS, AND/OR AS-BUILT PLANS, PROVIDED BY OTHERS. POINT OF BEGINNING MAKES NO WARRANTY OF ANY KIND, EXPRESS OR IMPLIED, WITH RESPECT TO THE EXISTING UTILITIES SHOWN HEREON, AND BELIEVES THAT THE INFORMATION CONTAINED HEREIN IS RELIABLE AND GENERALLY ACCURATE FOR THE PURPOSE INTENDED.

POINT OF BEGINNING, INC. HOLDS THE RIGHTS TO COPYRIGHT IN AND TO THESE PRINTS, DRAWINGS AND DOCUMENTS. NO REPRODUCTION, COPYING, ALTERATION, MODIFICATION, USAGE, INCORPORATION INTO OTHER DOCUMENTS OR ASSIGNMENT OF THE SAME MAY OCCUR WITHOUT THE PRIOR WRITTEN PERMISSION OF POINT OF BEGINNING, INC.
© 2022 POINT OF BEGINNING, INC.





GENERAL NOTES:

- CONTACT DIGGER'S HOTLINE 5 WORKING DAYS PRIOR TO THE START OF DEMOLITION/CONSTRUCTION.
- 6" OF TOPSOIL SHALL BE PROVIDED IN ALL GENERAL LANDSCAPE AREAS. LANDSCAPE CONTRACTOR SHALL VERIFY THAT SPECIFIED PLANTING SOIL DEPTH IS PRESENT PRIOR TO PLANTING.
- SEED/FERTILIZE/GRIMP HAY MULCH ALL GENERAL LANDSCAPE AREAS DISTURBED DURING CONSTRUCTION, EXCEPT AREAS NOTED ON THIS DOCUMENT TO BE SODDED.
- ALL PLANT MATERIALS LISTED SHALL MEET THE STANDARDS OF THE AMERICAN NURSERY & LANDSCAPE ASSOCIATION FOR THE SIZES GIVEN.
- ALL TREES SHALL BE STAKED WITH A MINIMUM OF THREE STAKES.
- 3" OF SHREDDED BARK MULCH SHALL BE PLACED IN ALL PLANTING BEDS.
- INSTALL 20-YEAR PREMIUM LANDSCAPE FABRIC (MEGAGROW OR SIMILAR) BENEATH ALL LANDSCAPE MULCH.
- COORDINATE ALL LANDSCAPE WORK WITH GAS, ELECTRIC, (INCLUDING MAIN SERVICE, SITE LIGHTING, CONDUITS AND SIGNAGE) CABLE AND TELEPHONE CONSTRUCTION AND RESPECTIVE TRADES FOR THE INSTALLATION OF SAID UTILITIES.

PLANTING SCHEDULE:

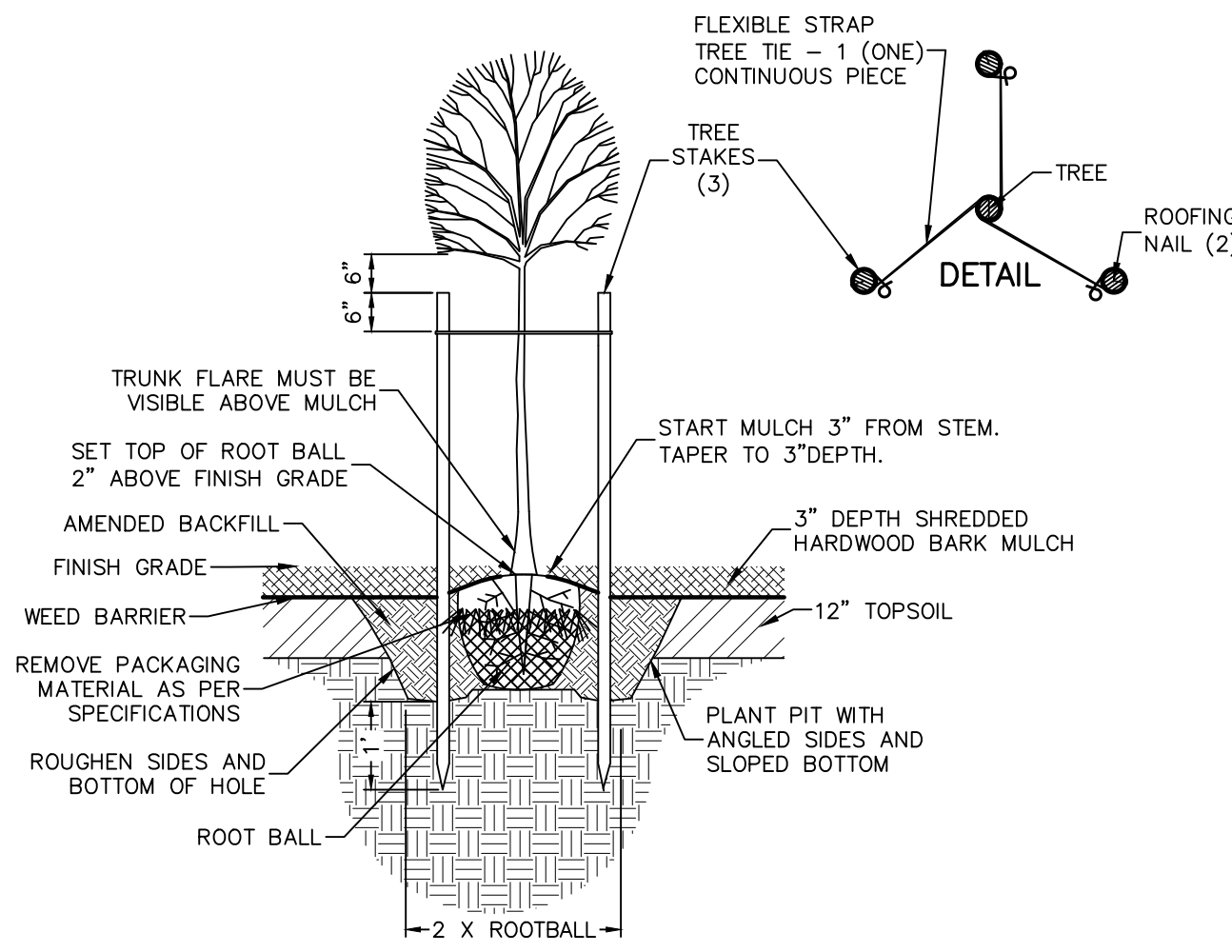
TREES SYMBOLS	BOTANICAL NAME	COMMON NAME	INSTALLATION SIZE	SIZE AT MATURITY	QUANTITY
CS	CERCIS CANADENSE 'MN STRAIN'	MN STRAIN REDBUB	1.5" CAL.	25'TX25'W	1
GD	CYNOCLADUS DIOICUS 'ESPRESSO'	ESPRESSO KENTUCKY COFFEETREE	2.5" CAL.	60'TX45'W	1
MA	MALUS 'JFS-KWS'	ROYAL RAINDROPS FLOWERING CRABAPPLE	1.5" CAL.	15'TX15'W	1
PE	PRUNUS PERSICA 'CONTENDER'	CONTENDER PEACH	1.5" CAL.	15'TX15'W	1
PO	PLATANUS OCCIDENTALIS/ORIENTALIS	EXCLAMATION! LONDON PLANETREE	2.5" CAL.	75'TX50'W	1
PP	PRUNUS PERSICA 'RELIANCE'	RELIANCE PEACH	1.5" CAL.	15'TX15'W	1
PS	PYRUS 'SUMMERCRISS'	SUMMERCRISS PEAR	1.5" CAL.	20'TX15'W	1
PY	PYRUS 'PATTEN'	PATTEN PEAR	1.5" CAL.	20'TX15'W	1

SHRUBS SYMBOLS	BOTANICAL NAME	COMMON NAME	INSTALLATION SIZE	SIZE AT MATURITY	QUANTITY
AA	AMELANCHIER ALNIFOLIA 'REGENT'	REGENT SERVICEBERRY	24"	4'T-6'W	3
AM	ARONIA MELANOCARPA	BLACK CHOKEBERRY	18"	4'T-3'W	3
CO	CORNUS STOLONIFERA 'FARROW'	ARCTIC FIRE DOGWOOD	24"	4'T-3'W	3
DL	DIERVILLA LONICERA	DWARF BUSH HONEYSUCKLE	12"	3'T-4'W	3
HA	HAMAMELIS VIRGINIANA	COMMON WITCH-HAZEL	24"	12'T-8'W	1
HP	HYPERICUM PROLIFICUM	SHRUBBY ST. JOHN'S WORT	12"	4'T-3'W	4
LB	LINDERA BENZOIN	NORTHERN SPICEBUSH	24"	8'T-6'W	1
RA	ROSA ARKANSANA	PRAIRIE ROSE	6"	2'T-2'W	3
SA	SYMPHORICARPOS ALBUS	COMMON SNOWBERRY	18"	3'T-3'W	1
SM	SAMBUCUS CANADENSIS	COMMON ELDERBERRY	24"	10'T-8'W	3
TO	THUJA OCCIDENTALIS 'BOBOZAM'	MR. BOWLING BALL ARBORVITAE	24"	8'T-3'W	8
VB	VIBURNUM DENTATUM 'CHRISTOM'	BLUE MUFFIN ARROWWOOD	24"	6'T-6'W	3

ORNAMENTAL GRASSES & PERENNIALS SYMBOLS	BOTANICAL NAME	COMMON NAME	INSTALLATION SIZE	SIZE AT MATURITY	QUANTITY
AF	AGASTACHE FOENICULUM	ANISE HYSSOP	12"	24'T	3
AI	ASCLEPIAS INCARNATA	ROSE MILKWEED	12"	36'T	2
AD	ADIANTUM PEDATUM	MAIDENHAIR FERN	6"	18'T	3
AT	ASCLEPIAS TUBEROSA	BUTTERFLY MILKWEED	12"	18'T	18
BA	BAPTISIA AUSTRALIS	BLUE FALSE INDIGO	12"	36'T	8
CB	CALLIRHOE BUSHII	BUSH'S POPPY MALLOW	12"	24'T	11
CL	COREOPSIS LANCEOLATA	LANCELEAF COREOPSIS	12"	24'T	7
CP	CAREX PENNSYLVANICA	PENNSYLVANIA SEDGE	12"	24'T	11
CR	CAREX BICKNELLII	PRAIRIE SEDGE	12"	24'T	39
CV	CAREX VULPINOIDEA	FOX SEDGE	12"	24'T	4
EP	ECHINACEA PURPUREA	PURPLE CONEFLOWER	12"	36'T	63
EY	ERYNGIUM YUCCIFOLIUM	RATTLESNAKE MASTER	12"	30'T	2
GT	GEUM TRIFLORUM	PRAIRIE SMOKE	6"	6'T	7
HF	HELENIUM FLEXUOSUM	PURPLE-HEADED SNEEZEWEED	12"	36'T	6
LO	LOBELIA SIPHILITICA	GREAT BLUE LOBELIA	12"	24'T	3
MF	MONARDA FISTULOSA	WILD BERGAMOT	12"	24'T	3
MS	MATTEUCCIA STRUTHIOPTERIS	OSTRICH FERN	12"	36'T	5
PC	POLEMONIUM CAERULEUM	JACOB'S LADDER	12"	24'T	12
PH	PENSTEMON HIRSUTUS	HAIRY BEARDTONGUE	6"	18'T	4
PI	PARTHENIUM INTEGRIFOLIUM	WILD QUINE	12"	30'T	3
PV	PANICUM VIRGATUM 'SHENANDOAH'	SHENANDOAH SWITCH GRASS	12"	48'T	16
RF	RUDEBECKIA FULGIDA	ORANGE CONEFLOWER	12"	36'T	3
RH	RUPELLIA HUMILIS	WILD PETUNIA	12"	18'T	9
SC	SOLIDAGO CAESIA	BLUE STEMMED GOLDENROD	12"	36'T	5
SH	SPOROBOLUS HETEROLEPIS	PRAIRIE DROPSEED	12"	36'T	16
SO	SYMPHYOTRICHUM OBLONGIFOLIUM	AROMATIC ASTER	6"	24'T	4
SS	SCHIZACHYRIUM SCOPARIUM	LITTLE BLUESTEM	12"	18'T	11
TV	TRADESCANTIA VIRGINIANA	VIRGINIA SPIDERWORT	12"	24'T	3
UG	UVULARIA GRANDIFLORA	LARGE-FLOWERED BELLWORT	6"	18'T	5

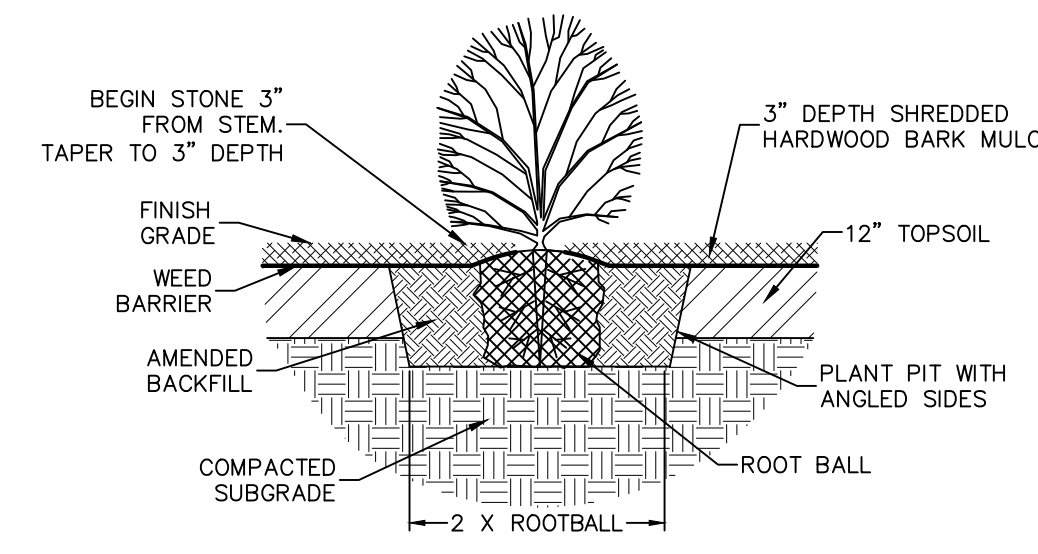
GROUNDCOVER SYMBOLS	BOTANICAL NAME	COMMON NAME	INSTALLATION SIZE	SIZE AT MATURITY	QUANTITY
AC	ASARUM CANADENSE	WILD GINGER	3" POT	6'T	19
FV	FRAGARIA VESCA	WILD STRAWBERRY	3" POT	12'T	33
TP	THYMUS PRAECOX	CREeping THYME	3" POT	12'T	6

LANDSCAPE BOULDERS	INSTALLATION SIZE	QUANTITY
(Symbol)	2-3' W&T	40



TREE PLANTING

1
L1.0



SHRUB PLANTING

2
L1.0

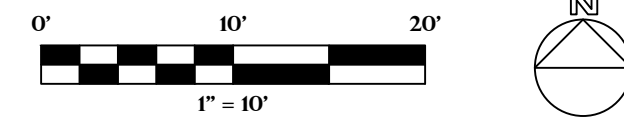
BENCHMARK:

ELEVATIONS ARE REFERENCED TO NAVD 88 DATUM.
BENCHMARK #1
 NORTHEAST FLANGE (TAG) BOLT ON HYDRANT LOCATED AT THE NORTHEAST QUADRANT OF THE INTERSECTION OF VINE STREET AND 6TH STREET NORTH. ELEVATION = 676.86
BENCHMARK #2
 SOUTHEAST FLANGE BOLT ON HYDRANT LOCATED AT THE SOUTHWEST QUADRANT OF THE INTERSECTION OF VINE STREET AND 7TH STREET NORTH. ELEVATION = 680.45

UTILITY DISCLAIMER:

THE LOCATIONS, SIZES, AND TYPES OF UNDERGROUND PUBLIC AND PRIVATE UTILITIES OR SUBSTRUCTURES SHOWN HEREON WERE OBTAINED FROM VISUAL INSPECTION, FIELD MEASUREMENTS, AND/OR AS-BUILT PLANS. SANITARY SEWER AND STORM SEWER PIPE SIZES, INVERTS, DIRECTION, AND LOCATIONS BETWEEN MANHOLES ARE SUPPLEMENTED BY AS-BUILT PLANS AND/OR ESTIMATED BASED ON FIELD OBSERVATIONS. PRIOR TO CONSTRUCTION IN THE VICINITY OF ANY UTILITIES SHOWN HEREON, IT IS RECOMMENDED THAT THE LOCATIONS, DEPTHS, AND SIZES BE FIELD VERIFIED. THE LOCATIONS SHOWN HEREON ARE ONLY APPROXIMATE, WITH POSSIBILITY THAT ADDITIONAL UTILITY LINES NOT DISCOVERED, OR MARKED, DURING THE SEARCH OF RECORDS AND THE FIELD SURVEY MAY EXIST. ANY CONTRACTOR USING THE INFORMATION SHOWN HEREON IS HEREBY FOREWARNED THAT ANY EXCAVATION UPON THIS SITE MAY RESULT IN THE DISCOVERY OF ADDITIONAL UNDERGROUND UTILITIES NOT SHOWN HEREON. IN GENERAL, UNDERGROUND UTILITY LOCATIONS ARE SHOWN FROM UTILITY MARKINGS, BY OTHERS, AND/OR AS-BUILT PLANS, PROVIDED BY OTHERS. POINT OF BEGINNING MAKES NO WARRANTY OF ANY KIND, EXPRESS OR IMPLIED, WITH RESPECT TO THE EXISTING UTILITIES SHOWN HEREON, AND BELIEVES THAT THE INFORMATION CONTAINED HEREIN IS RELIABLE AND GENERALLY ACCURATE FOR THE PURPOSE INTENDED.

POINT OF BEGINNING, INC. HOLDS THE RIGHTS TO COPYRIGHT IN AND TO THESE PRINTS, DRAWINGS AND DOCUMENTS. NO REPRODUCTION, COPYING, ALTERATION, MODIFICATION, USAGE, INCORPORATION INTO OTHER DOCUMENTS OR ASSIGNMENT OF THE SAME MAY OCCUR WITHOUT THE PRIOR WRITTEN PERMISSION OF POINT OF BEGINNING, INC.
 © 2022 POINT OF BEGINNING, INC.



REVISIONS	
CHECKED:	DSP
DRAWN:	MAJ
DATE:	04/20/2022
PROJECT NO.:	22.004

LANDSCAPE PLAN

**W.T.C.
 HEC LOT
 CITY OF LA CROSSE
 LA CROSSE CO, WI**

Civil Engineering
 Land Surveying
 Landscape Architecture
 4941 Kirschling Court
 Stevens Point, WI 54481
 715.344.9999 (PH) 715.344.9922 (FX)

POB
 Point of Beginning
SHEET L1.0